

QUICK START GUIDE For PM246S

@ Phomemo present



Catalog

QUICK START GUIDE	1
1. Contact Phomemo Technical support team	3
2. Package list	4
3. Power on your printer	5
4. How to feed label	6
5. Connect to computer	7
6. Installation for Windows	8
7. Installation for Mac	9
8. Installation for ChromeOS	10
9. Label editor: Labelife	11
10. Keep your label printer in latest update	12
11. Setup: printer preference	13
12. Specifications	16

1. Contact Phomemo Technical support team

We believe that users are the root of our development. Therefore, we are committed to providing high quality service and reliable products to our customers. No matter you have any doubts, questions in the process of using, you can contact us through the following ways anytime. We are at your service. ❤️

Phone us: +1 855 957 5321

Our website: www.phomemo.com

Email us: support@phomemo.com

WhatsApp us: +86 139 2808 8284

YouTube Channel: <https://www.youtube.com/channel/UC5t52R9QarUICgo9FfxgtQ>

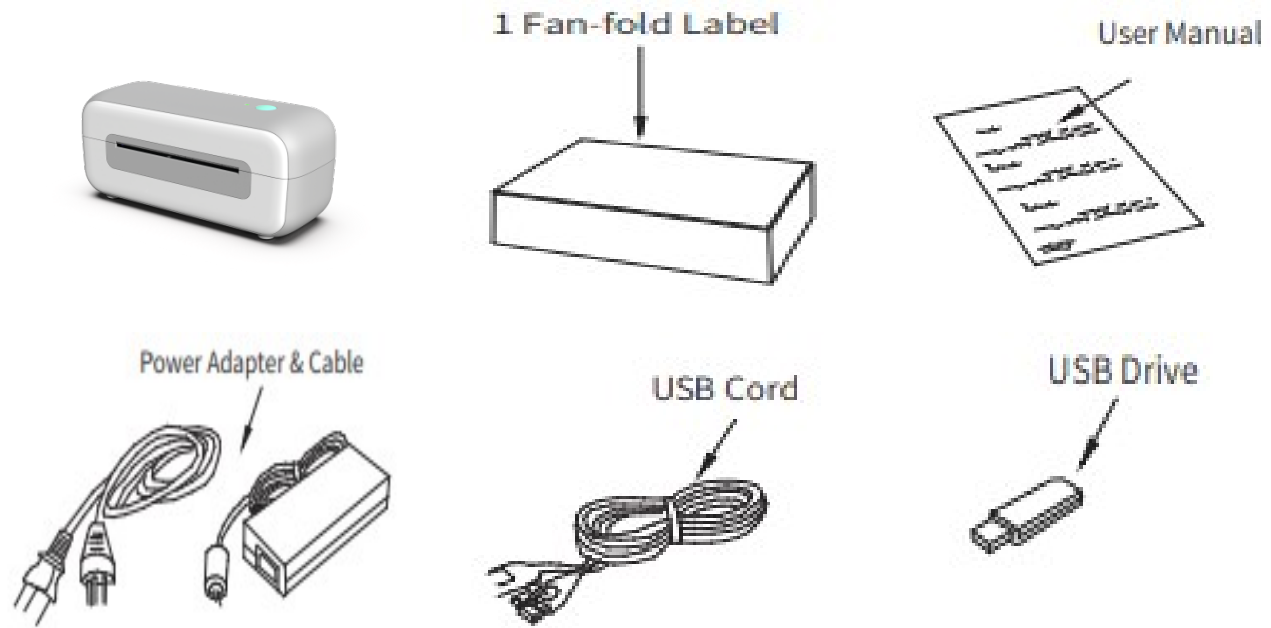


Scan QR code talk to us on WhatsApp.

At last Thank you for choosing Phomemo.

Best wishes for you.

2. Package list



What in the box?

Label printer x 1

Fan-fold labels x 1

User manual x 1

Power adapter x 1

Power cable x 1

Usb cord x 1

Usb disk x 1

!! If any accessories missing, please contact us to get support. **!!**

PM246S Quick start video: <https://phomemo.com/pages/pm246s>

3. Power on your printer

- Connect power adapter and power cable to printer.

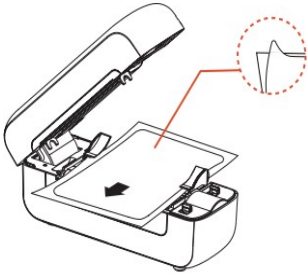


NOTE: Please switch power to O (I: ON O:OFF) before you connect power cable to printer.

- Turn on printer

4. How to feed label

- Open printer cover. And feed label into printer.



NOTE: The printing side must be faced up or it will print blank label.

- Close printer cover. The printer catch label automatically.
- Press and hold FEED button(on the top of the cover) until blue light blink 2 times then release button. Printer will run label identification automatically.
- Press and hold FEED button until blue light blink 1 time then release button. Printer will print self-test page.

!! Please check whether the self-test page is clear and correct. If the print is unclear or incorrect, please contact customer service directly. We will provide you with a new replacement service. **!!**

5. Connect to computer

- Connect USB cable to printer.



- Connect USB cable to your computer.



- Turn on printer.

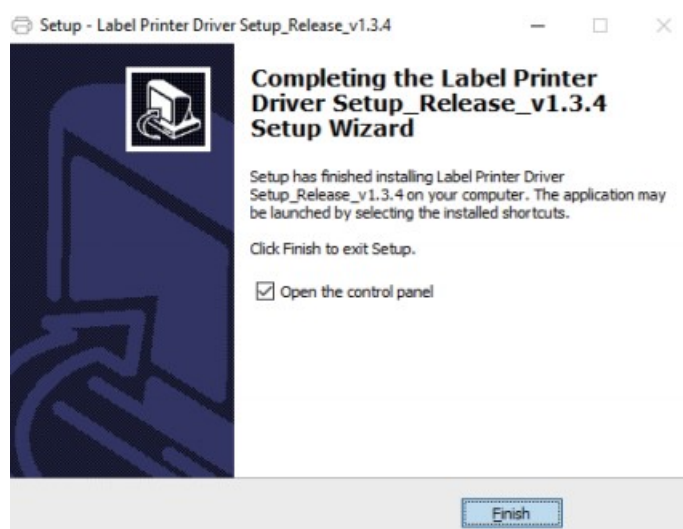
6. Installation for Windows

Tips: Driver is fully compatible with Windows computers with ARM processors

- Get printer driver installation
 - Get label printer driver from USB driver.
 - Or get the latest driver from

<https://phomemo.com/pages/download-center-pm-246s-new>

- Open driver installation. Just follow the prompts and proceed to the next step.



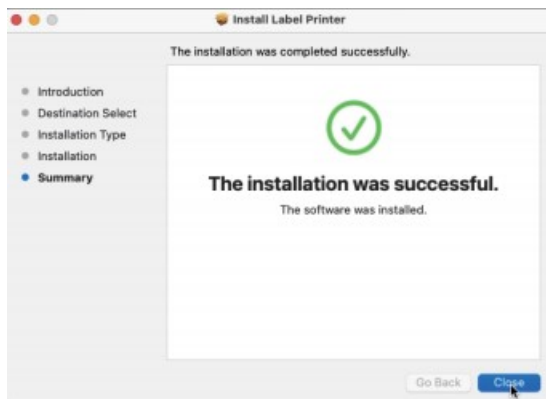
- Now, printer driver have been installed. Please enjoy our printer.

7. Installation for Mac

- Get printer driver installation
 - Get label printer driver from USB driver.
 - Or get the latest driver from

<https://phomemo.com/pages/download-center-pm-246s-new>

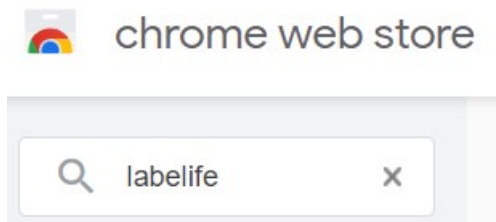
- Open driver installation. Just follow the prompts and proceed to the next step.



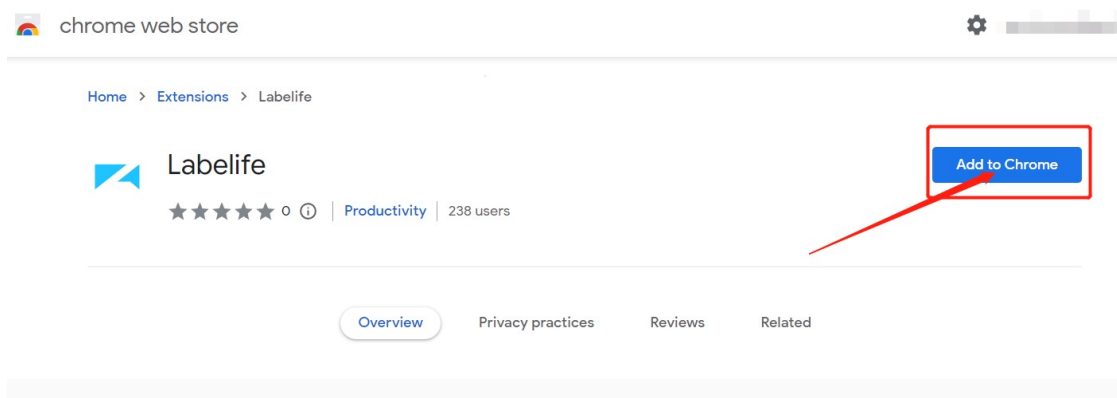
- Now, printer driver have been installed. Please enjoy our printer.

8. Installation for ChromeOS

- Open chrome web store.
- Search “labelife” extension.

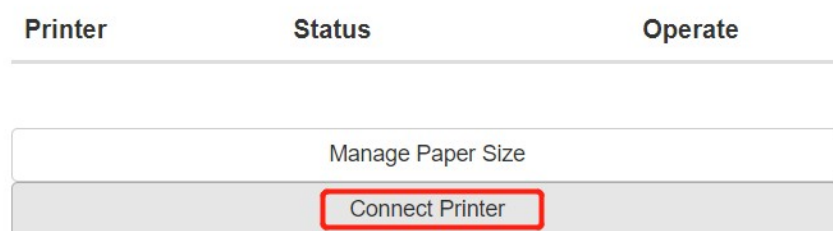


- Add extension to your chrome.



- Connect printer to chrome.

Label Printer Manager



- Select PM246S then pair with printer.
- Now, the printer has been setup with your Chromebook already.

9. Label editor: Labelife

Instruction: labelife is a free application for phomemo printer. You can customize label with editor tools or crop PDF files with labelife PDFs tools.

- Download and install Labelife

Get installation on: <https://labelife.itaricartridge.com>



- Customize a new label

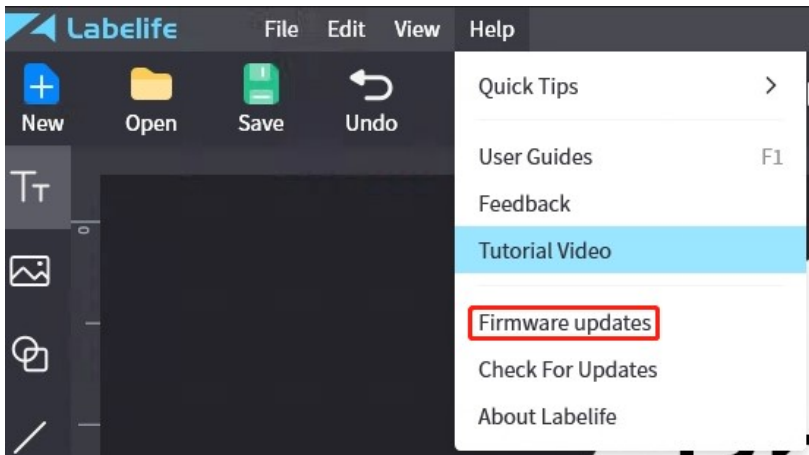


10. Keep your label printer in latest update

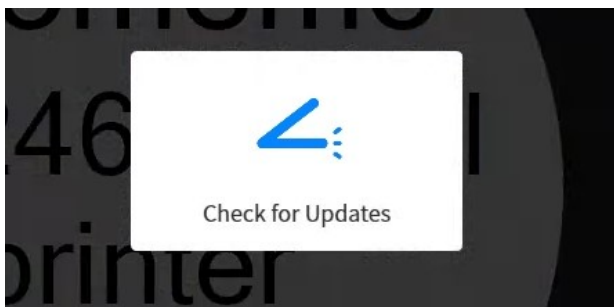
Be aware, Keep your label printer in the latest update will make printer perform better.

Open labelife application.

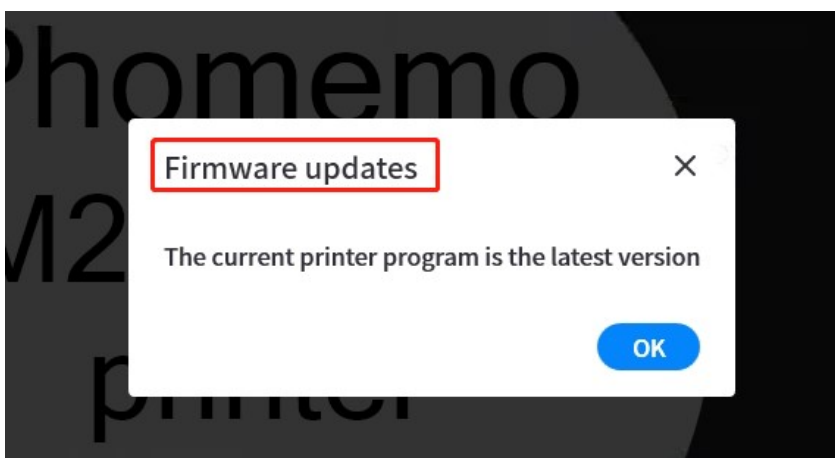
1. Help --> Firmware updates



2. It will check for updates.



3. Keep your printer in the latest version and print better.

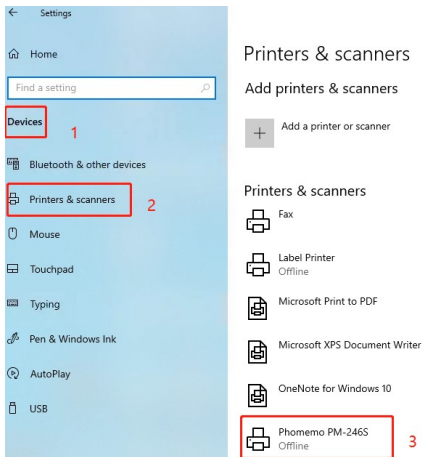


11. Setup: printer preference

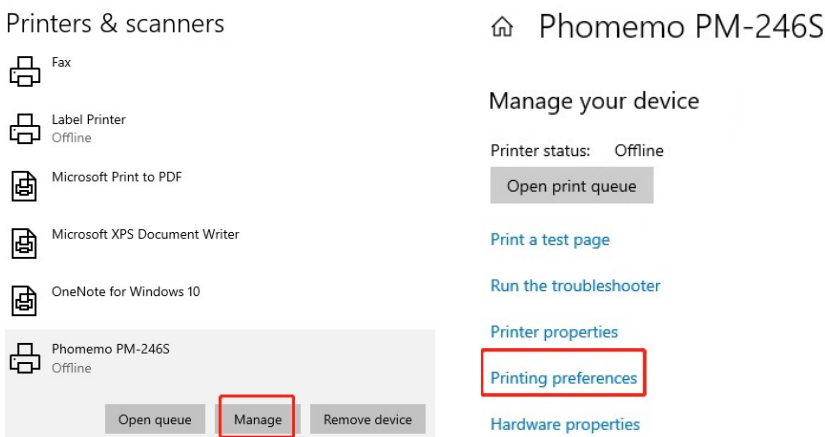
● Setting paper size

Windows

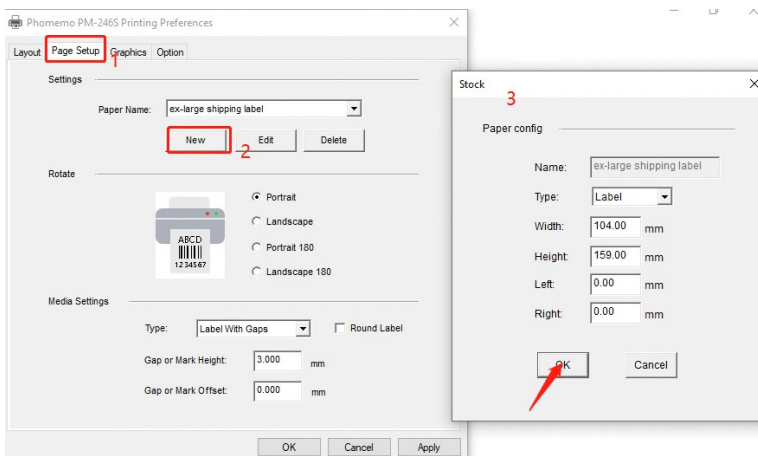
1. Open Setting --> Devices --> Printers & Scanners



2. Manage Phomemo PM-246S --> Printing preferences

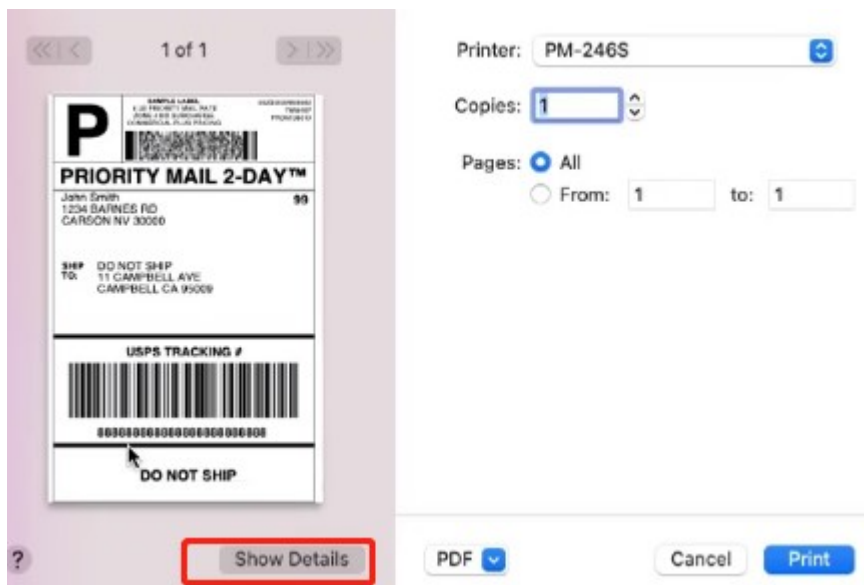


3. Page Setup --> New your page --> Fill up dimension

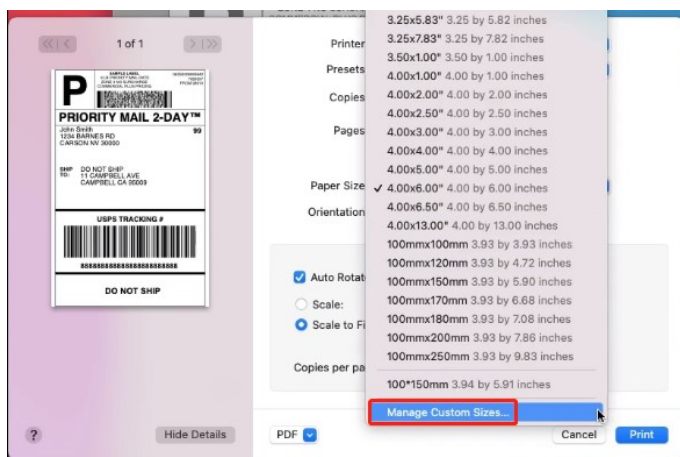


Mac

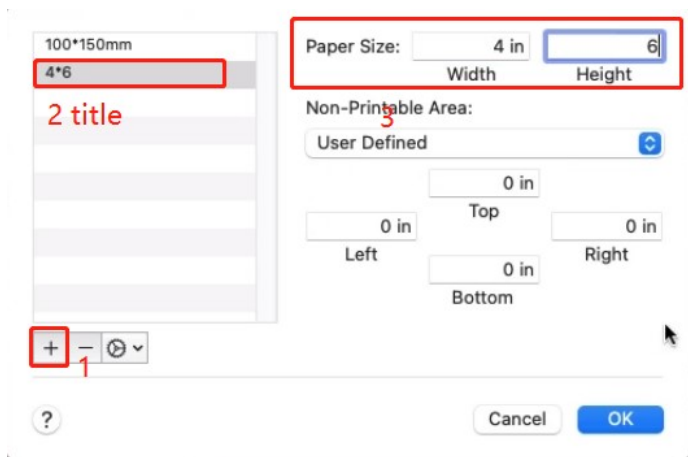
1. Show detail while you ready to print



2. Paper Size --> Manage Custom Sizes



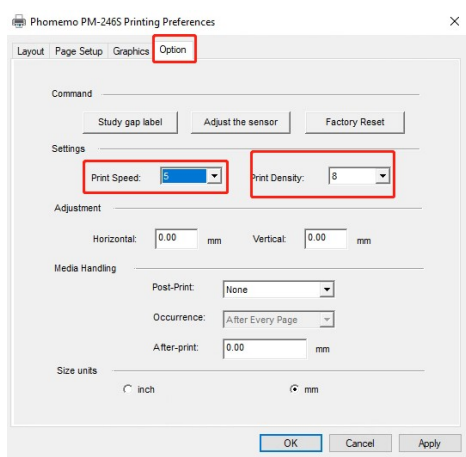
3. Set your paper size



● Setting printing darkness and speed

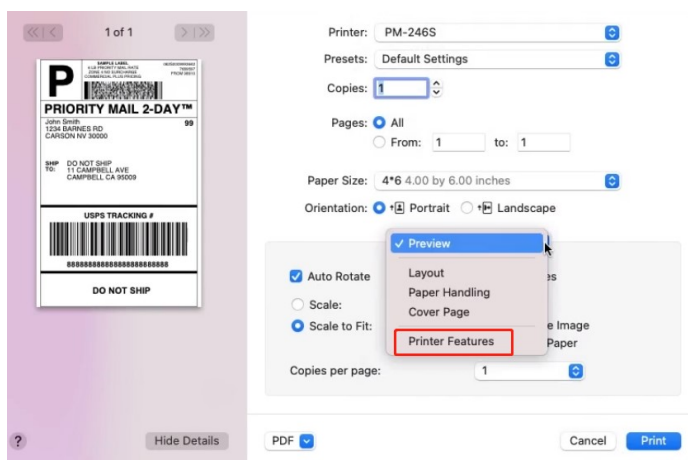
Windows

1. In printing preference Option --> print speed / print density

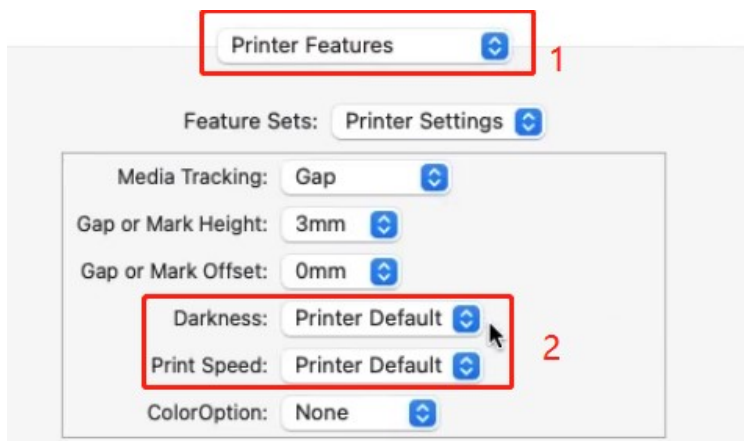


Mac

1. Go printer features



2. Set printer speed and darkness



12. Specifications

Printing method	Thermal
Resolution	203 DPI
Max printing speed	150mm/s
Label width	1.57"x4.7"
Label thickness	0.08~0.2mm
Connection	USB
Input voltage	100~240V
Power adaptor	24V/2A
Support Paper	Direct thermal labels Thermal continuous labels
Support operating system	Windows (x86/x64/arm) macOS Linux(Ubuntu/CentOS) ChromeOS
Printing life	About 1,000,000 labels