

7-Speed Adult Tricycle User Manual



Read Carefully Before Use
Keep for Future Reference

CONTENTS

Safety Information	25
Package List	26
Parts Diagram	27
Assembly	29
1. Rear Derailleur	29
2. Rear Wheels	30
3. Main and Rear Frames	31
4. Chain	32
5. Front Wheel	33
6. Chain Guard	34
7. Front Fender	35
8. Handlebars	36
9. Derailleur Cable	37
10. Front Brake	39
11. Rear Brake	40
12. Rear Fenders, Stays, and Reflectors	41
13. Pedals	42
14. Saddle	42
15. Rear Basket	43
16. Front Reflector	44
17. Bell	45
18. Rear Wheel Caps	45
Maintenance	45
Contact Information	46

Safety Information

Warning!

Traffic Rules

- **ALWAYS** obey all applicable local and national laws and regulations while riding.
- It is advisable to equip your tricycle with a warning device such as a horn, bell, or light in case you are riding at times of poor visibility. This is even required in some jurisdictions.
- **ALWAYS** be alert. People or animals may dart in front of you. Also be careful of passing parked cars, whose doors might open suddenly.
- Be careful at road and rail crossings. Slow down and check both ways for oncoming traffic.

Weather and Clothing

- In wet weather, be careful to avoid sharp turns and allow more distance for braking. Caliper brakes may become less efficient when wet.
- We **DO NOT** recommend riding your tricycle at night. If you have an emergency that makes it necessary to ride at night, be sure to have proper lights and reflectors. **DO NOT** ride at night without a front light, rear lights, or front and rear reflectors.
- **ALWAYS** wear a helmet and other required protective gear that meet safety standards when riding.
- **ALWAYS** wear shoes when riding your tricycle and avoid loose-fitting clothes.

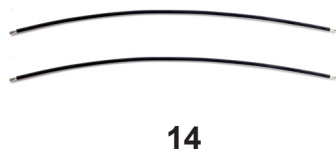
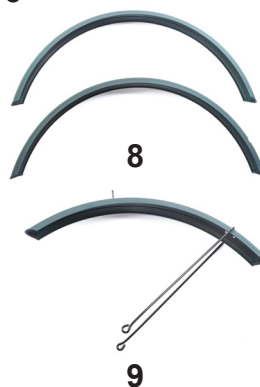
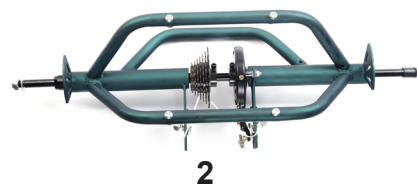
Safety Checks

- Check whether the brakes are positioned properly before riding.
- Regularly check the reflectors to make sure that they are clean, straight, unbroken, and securely mounted. Riding without reflectors is extremely dangerous.
- Regularly check whether all fasteners and components are securely tightened.
- If any part does not operate properly, discontinue use until its replacement.
- Replace worn or broken parts immediately, especially bent or broken spokes and bent or damaged wheel rims.

Sensible Use

- Be mindful of your speed. Ensure you have sufficient room to brake in an emergency.
- Allow more distance for braking when riding through leaves, loose gravel, or other debris as these can also affect the stopping power of your brakes.
- **DO NOT** carry packages or objects on your tricycle in a way that obstructs your view of the road.

Package List



Parts Diagram



Item	Name	Qty.
1	Main Frame	1
2	Rear Frame	1
3	Handlebars	1
4	Right Rear Wheel with D-Shaped Slot	1
5	Front Wheel	1
6	Left Rear Wheel with O-shaped Slot	1
7	Rear Fender Stays	2
8	Rear Fenders	2
9	Front Fender with Stay	1
10	Rear Derailleur	1

Item	Name	Qty.
11	Saddle	1
12	Locking Pin	1
13	Saddle Post	1
14	Derailleur Cable Outer Casings	2
15	Chain	1
16	Chain Guard	1
17	Cable Lock	1
18	Bell	1
19	Pedals	2
20	Rear Basket	1
21	Rear Reflectors	2
22	Front Reflector	1
23	Front Reflector Holder	1
24	Rear Wheel Caps	2
25	Slats	2
26	Wheel Nut	1
27	Wheel Washer	1
28	Spring	1

For your convenience, all bolts, nuts, and washers, except those for the right rear wheel, are pre-installed where they will be needed. During assembly, simply remove the fasteners as needed and keep them nearby. Reinstall them to connect each part as you go and tighten them securely for a safe and satisfactory experience.

For best results, prepare and use the following tools as needed:

- 9mm Wrench
- 10mm Wrench
- 13mm Wrench
- 14mm Wrench
- 15mm Wrench
- 22mm Wrench
- 2.5mm Hex Wrench
- 6mm Hex Wrench
- Phillips Screwdriver
- Pliers

Assembly

To see these instructions in video form, go to our YouTube channel **Viribus Workshop** and search for “**ABR-2**”.

Ensure that **ALL** packaging materials have been removed before assembling your new tricycle.



DO NOT allow children or pets to play with **ANY** packaging or tricycle parts without adult supervision.

1. Installing the Rear Derailleur



1. Secure the rear derailleur (10) to its slot on the rear frame (2) as shown.
2. Tighten the hex bolt with a 6mm hex wrench.

Note: Make sure the derailleur is **TIGHTLY** secured. Otherwise, the installation of the chain will be impacted.

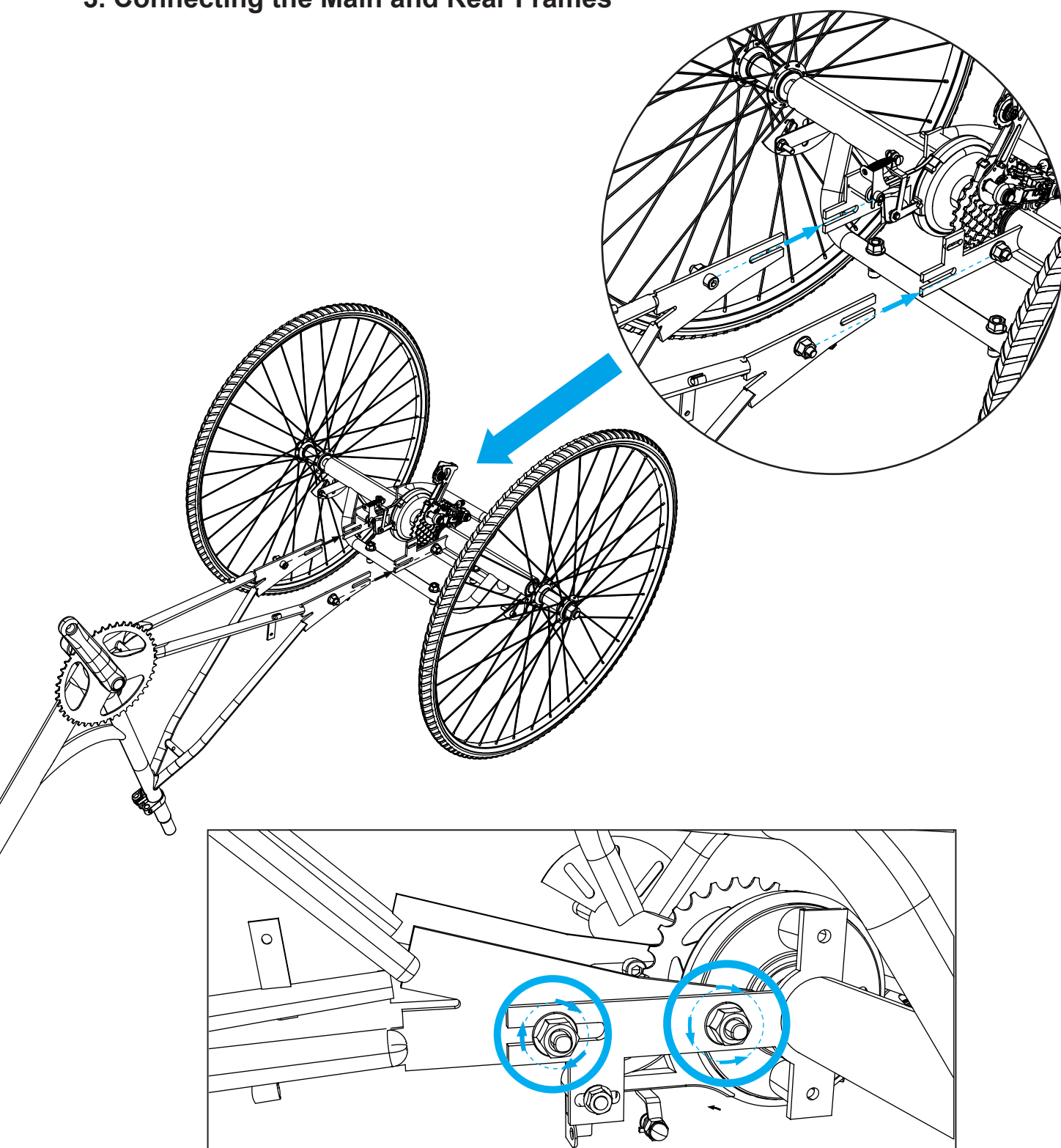
2. Installing the Rear Wheels



Note: The two rear wheels **ARE** different and should **NOT** be mixed up. The wheel with the O-shaped slot goes with the O-shaped hub on the left side of the rear axle while the wheel with the D-shaped slot goes with the D-shaped hub on the right side.

1. Remove the nut and washer from the O-shaped hub on the left side of the rear frame by hand. Place them nearby.
2. Slide the spacer inwards as shown.
3. Connect the left rear wheel with the O-shaped slot (6) to the O-shaped hub.
4. Replace the washer and nut, tightening the nut with a 22mm wrench.
5. Detach the protective cover from the D-shaped hub.
6. Connect the right rear wheel with the D-shaped slot (4) to the D-shaped hub.
7. Attach the wheel washer (27) and nut (26), tightening the nut in the same fashion.

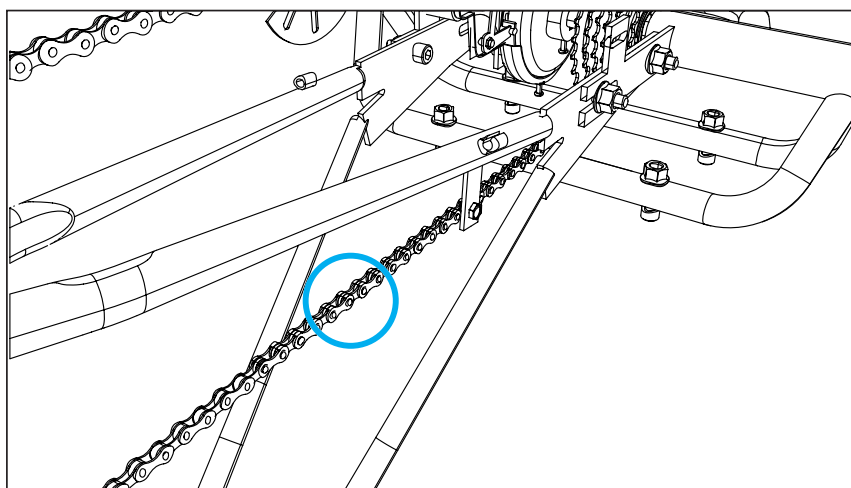
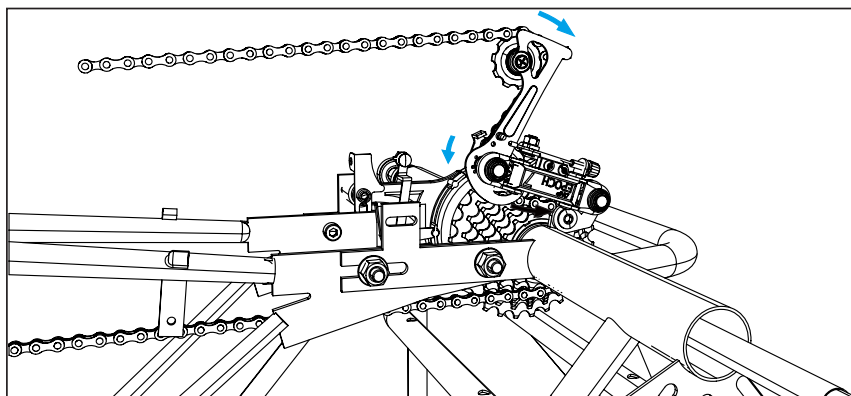
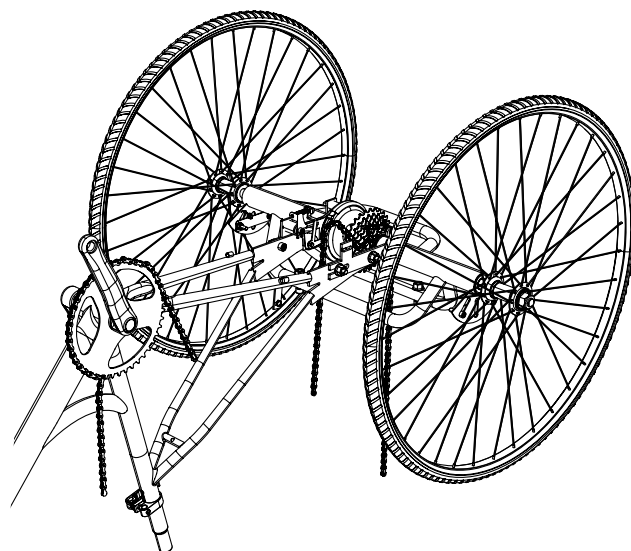
3. Connecting the Main and Rear Frames



1. Place the rear frame vertically on a firm level surface.
2. Remove the 2 sets of nuts, washers, and bolts from the slots on both sides of the rear frame. Place them nearby.
3. Flip the main frame (1) over and slide it onto the rear frame, aligning their slots with each other as shown. For best results, start with either side and repeat for the other side.
4. Replace the bolts, washers, and nuts, tightening the nuts with a 14mm wrench.

4. Installing the Chain

1. Find the two non-preinstalled chain links in the chain bag and connect them to each other by pushing their pins into their slots. Place them nearby.
2. Position one end of the chain (15) around the front cog.
3. Pass the other end of the chain through the guide pulley of the rear derailleur, arranging the chain in an S shape.
4. Run the chain around the largest rear cog.
5. Join both ends of the chain using the above-mentioned chain links in the same fashion.
6. Pull the chain taut with both hands, testing that it cannot be torn apart.
7. Tighten all the nuts connecting the main and rear frames completely.



5. Installing the Front Wheel



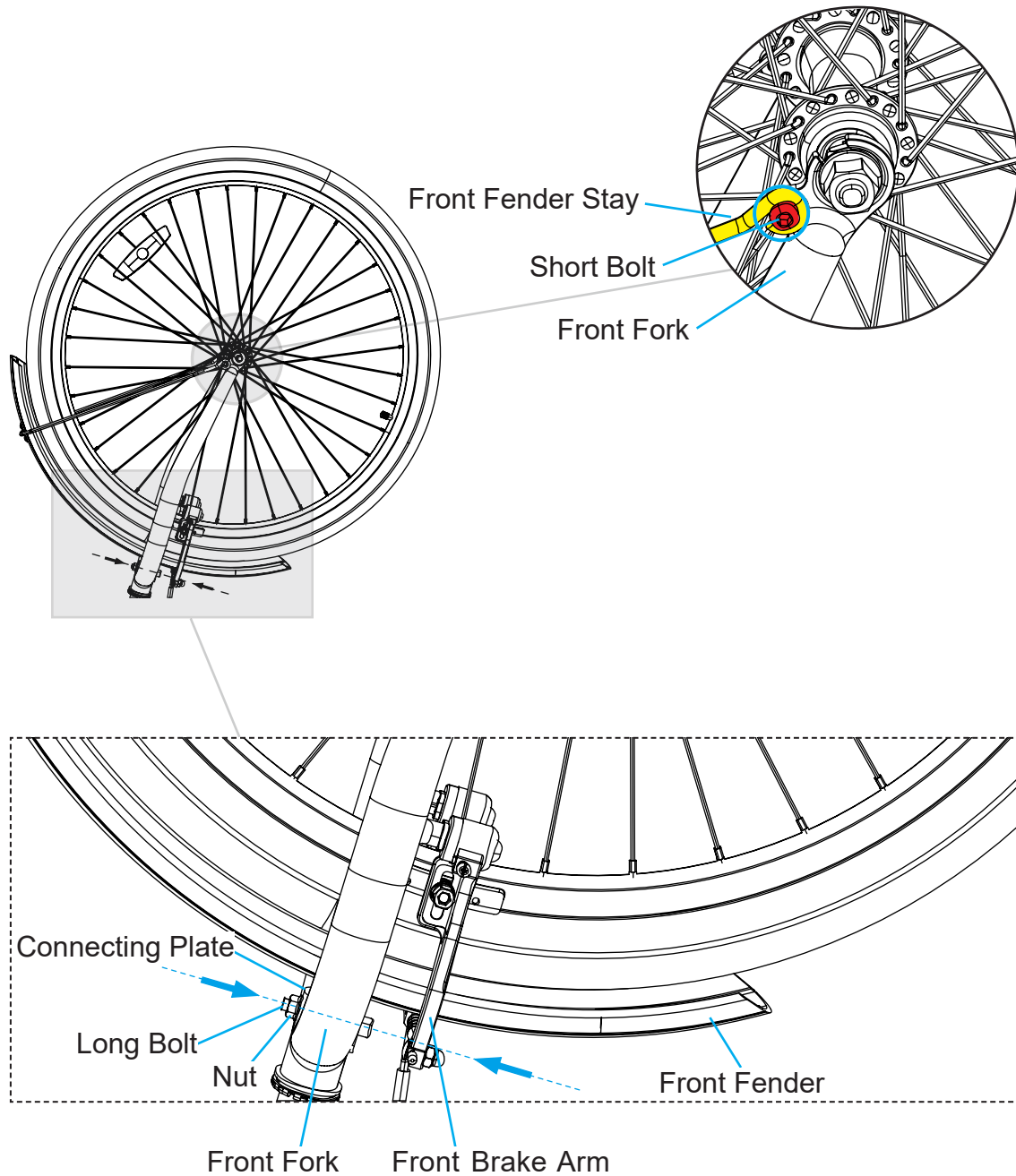
1. Press and disconnect the front brake arms on the main frame's front fork.
2. Unscrew the locking nuts on the protective bar and remove the bar from the front fork.
3. Remove the 2 retaining clips from the front fork's tips. Place them nearby.
4. Remove the 2 sets of protective covers, nuts, and washers from the hub of the front wheel (5). Place the nuts and washers nearby.
5. Fit the front wheel into the front fork.
6. Replace the retaining clips.
7. Replace the washers and nuts, tightening the nuts with a 13mm wrench.

6. Installing the Chain Guard



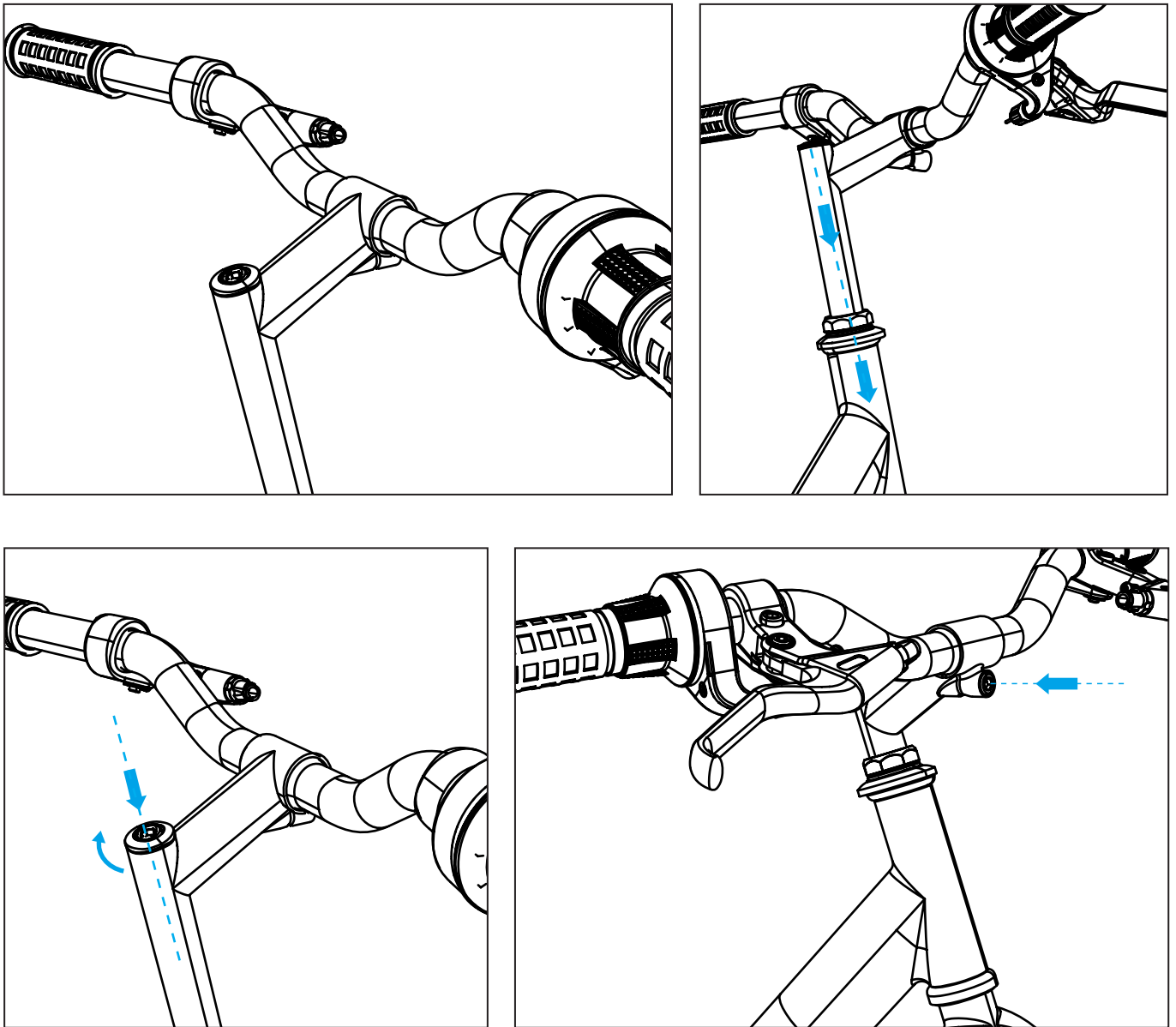
1. Remove the 3 bolts from the guard supports near the front and rear sprockets with a Phillips screwdriver. Place them nearby.
2. Place the chain guard (16) onto its supports and over the chain as shown.
3. Replace the bolts, tightening them with your Phillips screwdriver.
4. Rotate the chain to see if it rubs against the guard. If it does, readjust the guard so that the chain moves freely.

7. Installing the Front Fender



1. Remove the nut, washers, and the long bolt at the top of the front fork. Place them nearby.
2. Fit the front fender (9) over the front wheel, aligning its slot with the fork's top hole.
3. Replace the long bolt, washers, and nut, partially tightening them.
4. Remove the short bolts from the front fork's tips with a Phillips screwdriver.
5. Align the slots on the front fender stay with those on the fork tips.
6. Replace and tighten the short bolts as shown.
7. Continue to tighten the long bolt and its nut with your Phillips screwdriver and pliers until the front fender is locked in place.

8. Installing the Handlebars



Note: Handle the exposed metal shaft carefully to avoid injury.

1. Turn the tricycle frame right side up.
2. Remove the protective cover underneath the stem of the handlebars (3).
3. Loosen the bolt on the top of the stem with a 6mm hex wrench.
4. Slide the stem into the head tube of the main frame, pressing and turning until it becomes secure.
5. Retighten the top bolt with your 6mm hex wrench.
6. Lift the handlebars to an appropriate position.
7. Tighten the bolt on the front with your 6mm hex wrench.

9. Installing the Derailleur Cable



1. Rotate the right handlebar to a convenient position, tightening its locking bolt with a 2.5mm hex wrench.
2. Thread the derailleur cable from the right handlebar into one of the outer casings (14).
3. Feed one end of this casing into the slots along the down tube and chain stay of the main frame.
4. Feed the other end of this casing into the slot on the right handlebar.
5. Thread the exposed part of the cable into the other casing, feeding this casing into the slot on the chain stay.
6. Pass the cable through the barrel adjuster on the rear derailleur.
7. Loosen the nut on the derailleur, position the cable behind its washer, and retighten the nut with a 9mm wrench.
8. Knot the remaining exposed cable appropriately.

Testing the Derailleur



Note: ALWAYS test the derailleur before first use.

1. Confirm that the derailleur is secure to the rear frame.
2. Turn the right handlebar to **1** to put the tricycle in its lowest gear.
3. Upshift through the gears towards **7** while turning the trike's crank. The chain should smoothly move from the largest cog to the smallest cog.

If necessary, use the barrel adjuster to fine tune each gear. Loosen the adjuster to release cable tension and move the chain away from the wheel. Tighten it to enhance cable tension and direct the chain towards the wheel.

If the chain cannot be exactly positioned on the smallest cog at the highest gear, adjust the **LEFT** high-limit screw with a Phillips screwdriver until the guide pulley and the smallest cog are lined up.

4. Downshift through the gears towards **1** while turning the crank, checking that each gear operates smoothly. Fine tune the gears using the barrel adjuster as described above if necessary.

If the chain fails to return to the largest cog at the lowest gear, adjust the **RIGHT** low-limit screw with your Phillips screwdriver until the guide pulley and the largest cog are aligned vertically.

5. Repeat Steps 3 & 4 several times until you are certain the derailleur is properly adjusted.

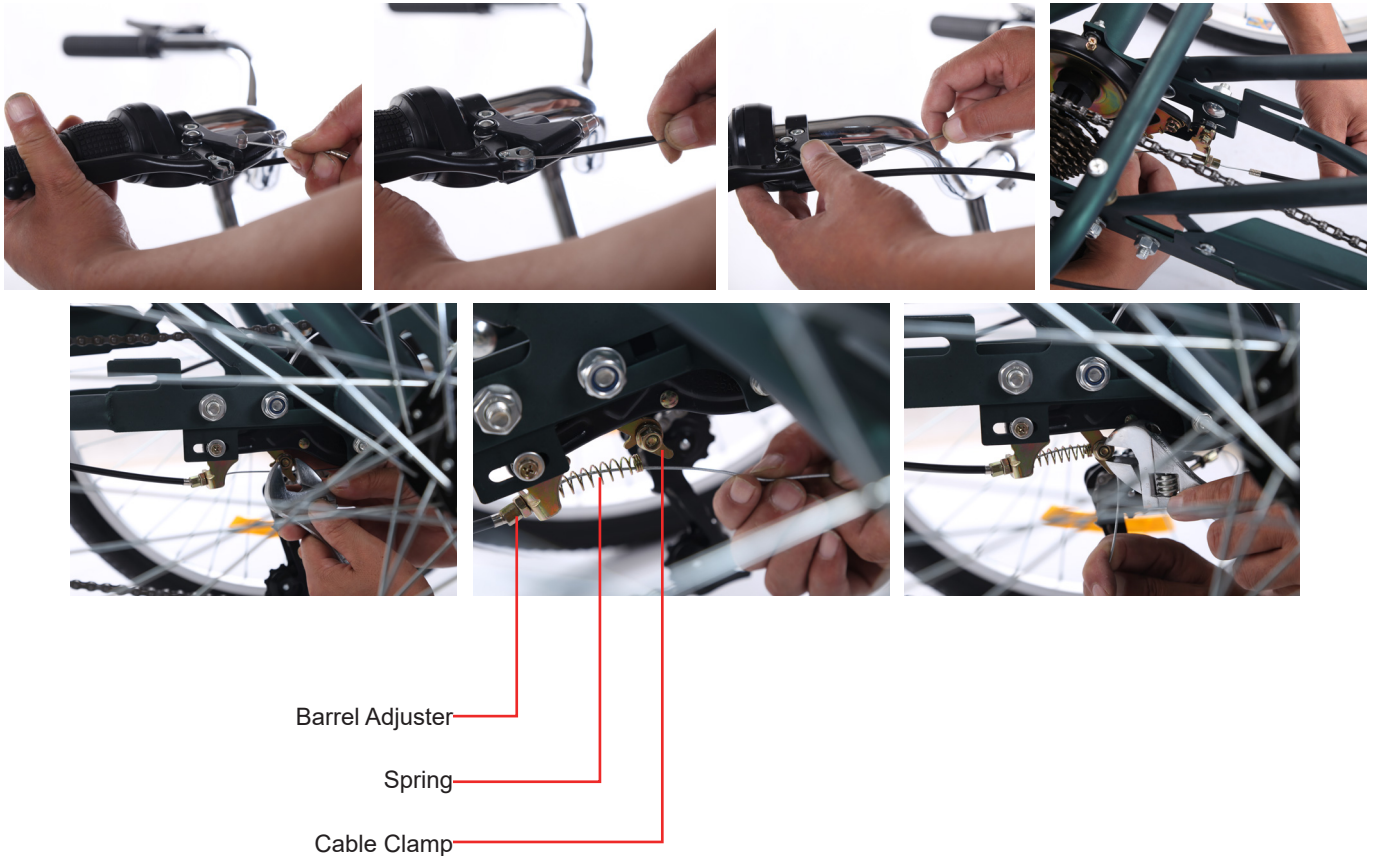
10. Installing the Front Brake



1. Make sure the front brake arms are already disconnected as shown.
2. Pass the round metal head of the front brake cable through the appropriate brake handle: Left in the United States and right in the United Kingdom.
3. Feed the cable's outer casing into the brake handle, tightening its locking nut.
4. Fit the cable into the slot of the front brake.
5. Loosen the locking bolt of the brake pads with a 10mm wrench.
6. Position the pads over the front wheel's rim, retightening their locking bolts. Do not allow them to touch the tire.
7. Making sure the cable is taut, press the front brake and tighten its locking nut with your 10mm wrench.
8. Test the front brake by pressing the corresponding brake handle.

If necessary, loosen the barrel adjuster to reduce the cable tension or tighten it to increase the tension until you feel comfortable with the brake handle while the front brake effectively stops the front wheel.

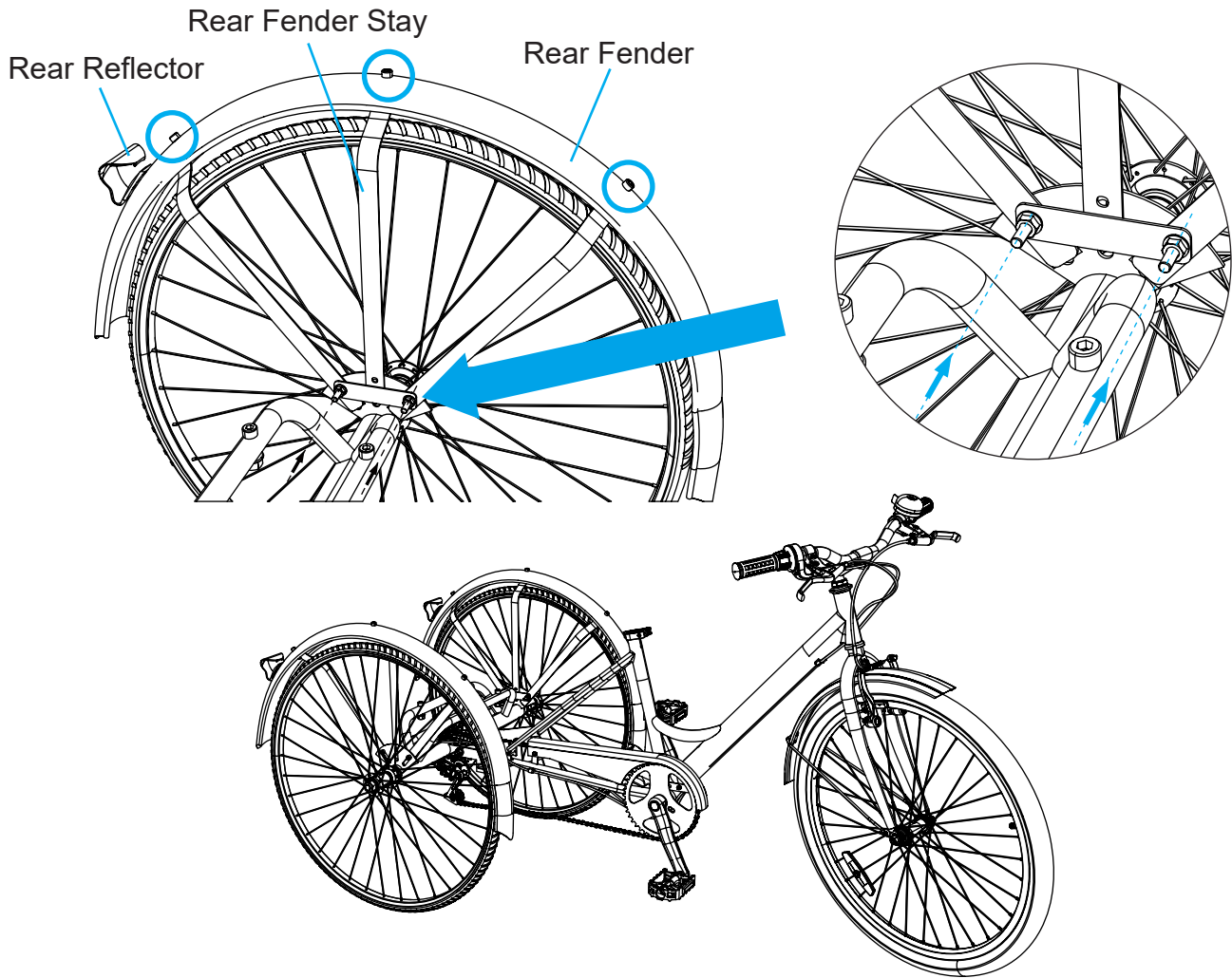
11. Installing the Rear Brake



1. Pass the round metal head of the rear brake cable through the appropriate brake handle: Right in the United States and left in the United Kingdom.
2. Feed the cable's outer casing into the brake handle, tightening its locking nut.
3. Feed the rear brake cable through the spring (28) and past the cable clamp.
4. Tighten the locking nut of the cable clamp with a 10mm wrench.
5. Test the rear brake by pressing the corresponding brake handle and pushing the tricycle forward.

If necessary, adjust the barrel adjuster to fine-tune the cable tension, ensuring that pressing the brake handle easily and effectively stops the rear wheel.

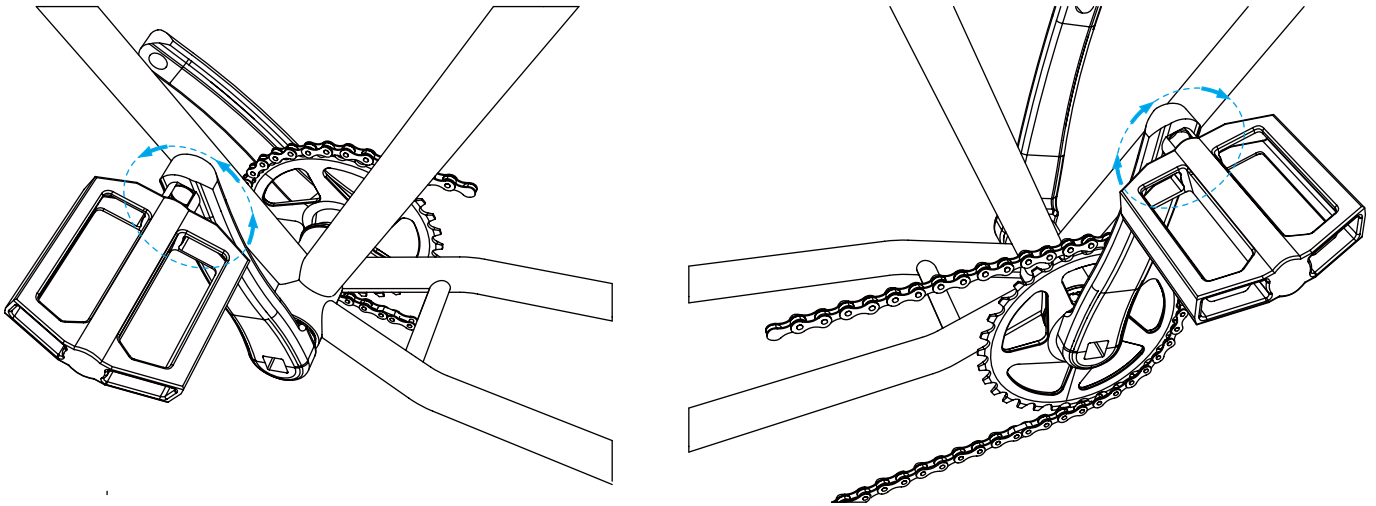
12. Installing the Rear Fenders, Stays, and Reflectors



Note: The two sets of rear fender stays (7) and rear reflectors (21) are the same. They can be used on either rear fender (8). The two rear fenders are the same. They can be used above either rear wheel.

1. Remove the 2 sets of nuts and bolts from one rear fender stay. Place them nearby.
2. Fit the rear fender stay onto either side plate of the rear frame, aligning their holes and taking care not to allow the stay to touch the tire or wheel rim.
3. Replace the bolts and nuts, tightening them with a Phillips screwdriver and 10mm wrench.
4. Remove the nut from one rear reflector's bolt. Place it nearby.
5. Attach the rear reflector to one rear fender.
6. Replace the nut, tightening it with pliers.
7. Remove the 3 bolts from the rear fender stay's tips.
8. Mount the rear fender onto the stay's tips, aligning their holes.
9. Replace the bolts, tightening them with your Phillips screwdriver.
10. Install the other rear fender, stay, and reflector following the same steps.

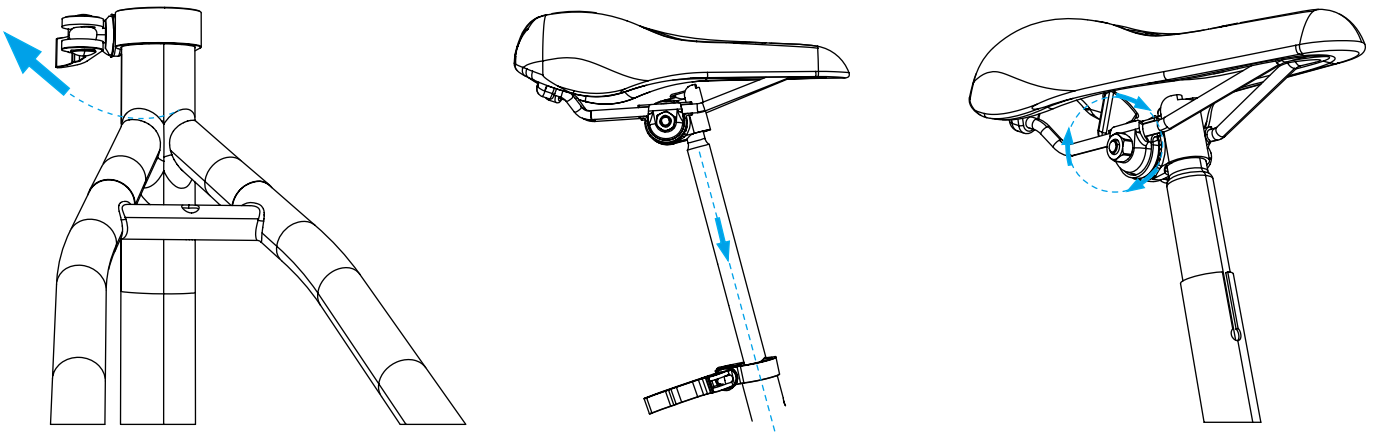
13. Installing the Pedals



Note: The two pedals (19) **ARE** different and should **NOT** be mixed up. The right pedal is marked with an **R** and the left with an **L**.

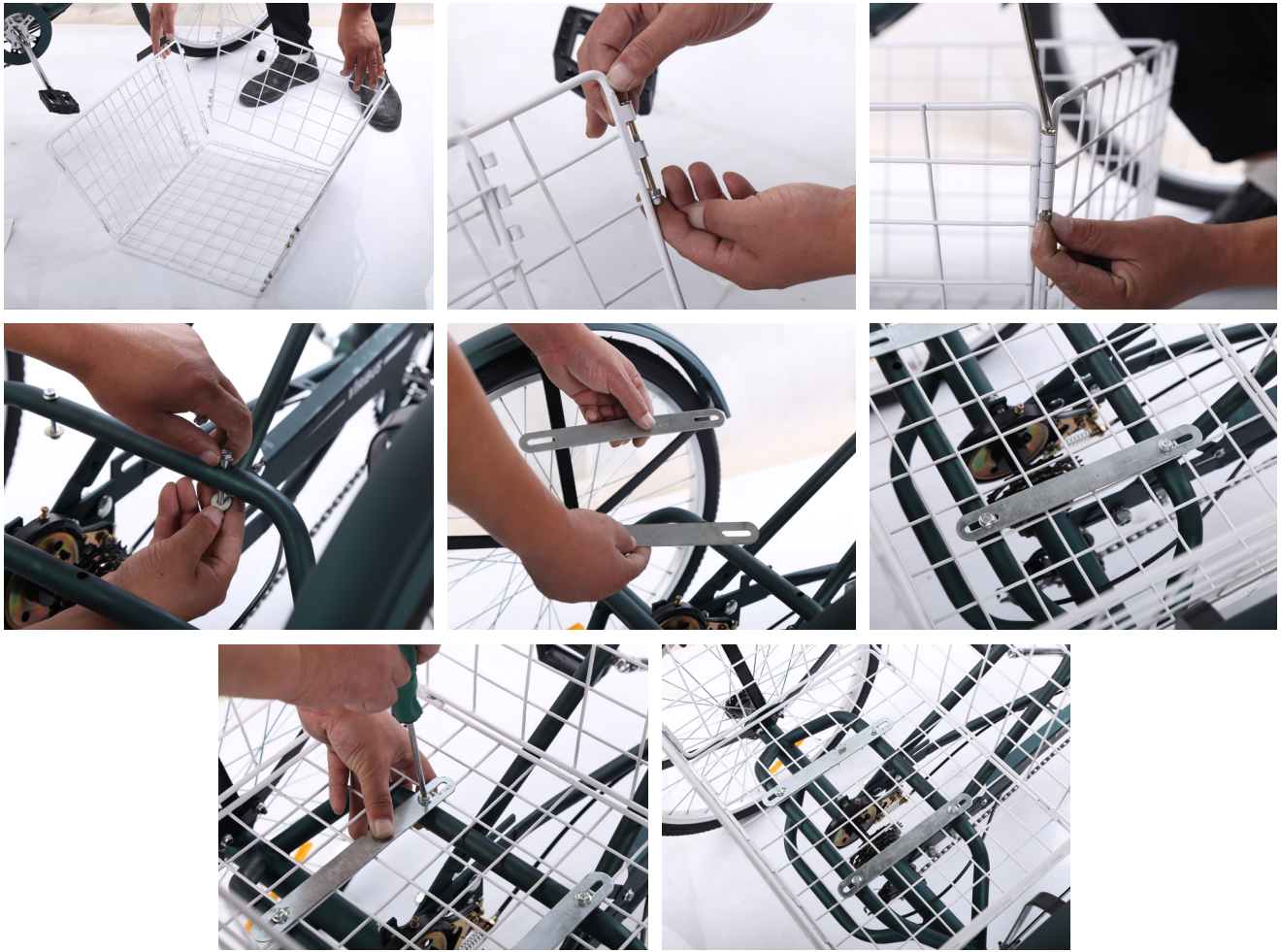
1. Attach the pedals to the crank arms on the appropriate side, screwing them into place.
2. Tighten their locking nuts with a 15mm wrench.
3. Test that the chain turns smoothly while using the pedals. Adjust as needed.

14. Installing the Saddle



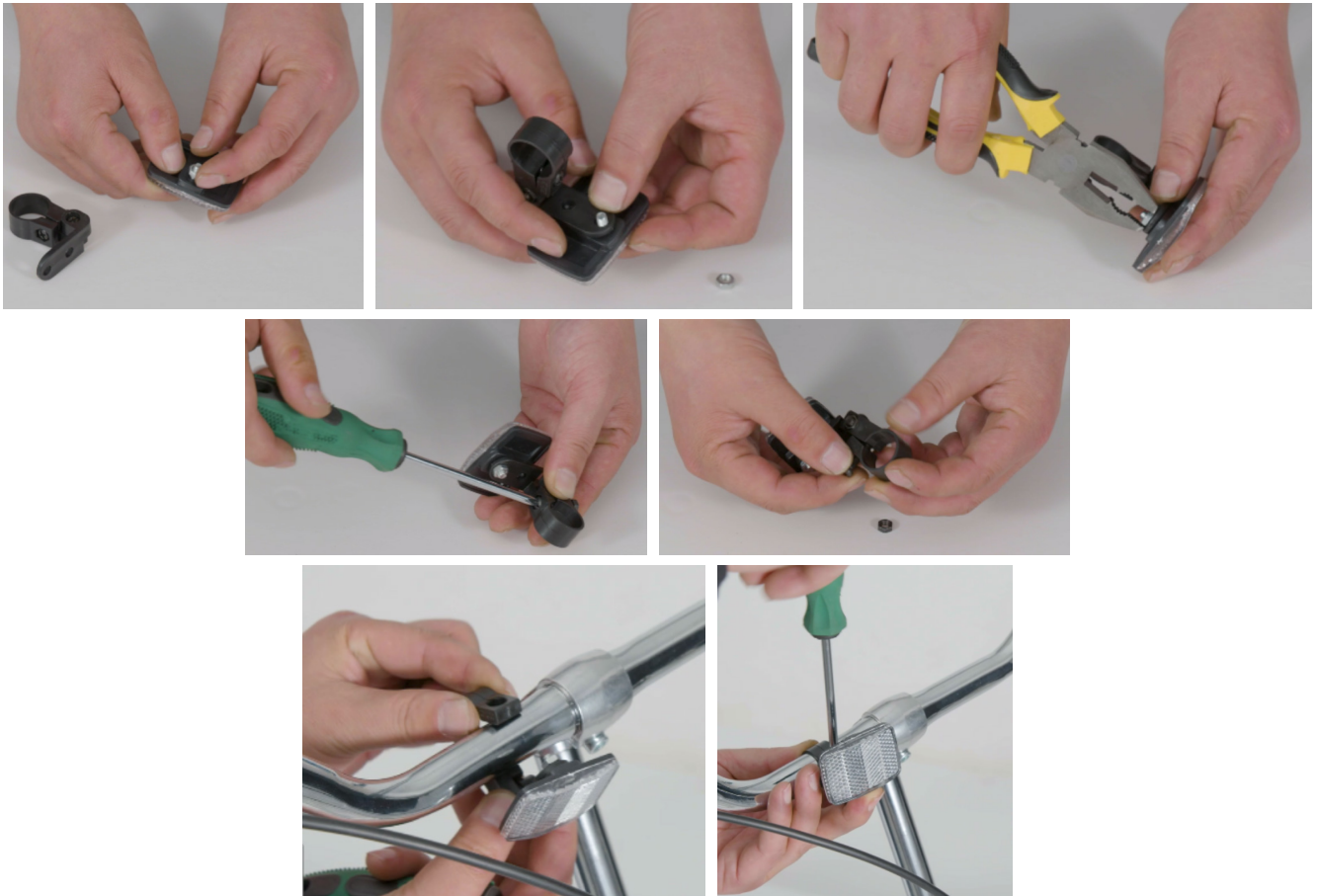
1. Remove the handle from the locking pin (12). Pass the pin through the top of the seat tube and replace its handle.
2. Insert the saddle post (13) into the seat tube until your preferred height is reached.
3. Turn the handle of the locking pin clockwise until the saddle post is locked in place.
4. Place the saddle (11) onto the saddle post, rotating it until your desired angle is reached.
5. Tighten the locking bolt underneath the saddle with a 13mm wrench.

15. Installing the Rear Basket



1. Unfold the five sides of the rear basket (20).
2. Remove all nuts and bolts from the basket. Place them nearby.
3. Connect each side of the basket by replacing these fasteners and tightening them with a Phillips screwdriver and pliers.
4. Remove the 4 sets of nuts, washers, and bolts from the rear frame as shown.
5. Fit the basket onto the rear frame.
6. Place the slats (25) into the basket, aligning their slots with those on the rear frame.
7. Replace these fasteners, tightening them with your Phillips screwdriver and pliers.

16. Installing the Front Reflector



1. Remove the nut from the bolt on the front reflector (22).
2. Connect the front reflector to the front reflector holder (23).
3. Replace the nut, tightening it with the pliers.
4. Remove the nut and bolt from the clamp of the front reflector holder as shown.
5. Fit the front reflector onto a convenient place on the handlebars using its holder's clamp.
6. Replace the bolt and nut, tightening the bolt with a Phillips screwdriver.

17. Installing the Bell



1. Remove the bolt from the clamp of the bell (18).
2. Fit the bell onto a convenient place on the handlebars using its clamp.
3. Replace the bolt, tightening it with a Phillips screwdriver.

18. Installing the Rear Wheel Caps



1. Attach the rear wheel caps (24) to the rear wheel hubs.
2. Press and tap the caps until they are locked in place.

Maintenance

- Check the parts of the tricycle for any looseness, wear, or damage after use. Tighten, repair, or replace any problematic parts before further use.
- The exterior of the tricycle can be cleaned with a soft damp cloth. Do not use abrasive or caustic chemicals.
- Lubricate the chain and any moving part using a standard bike lubricant as needed.
- If the tricycle will not be used for an extended period of time, store in a cool dry place away from direct sunlight and inaccessible to children.



Contact Us

Thank you for choosing our products! If you have any questions or comments, contact us at **contact@b2ccsonline.com** and we'll resolve your issue ASAP!

For a .pdf copy of the latest version of these instructions, use the appropriate app on your smartphone to scan the QR code to the right.



ABR-2MAB-HY ABR-2MAB-HW ABR-2MAB-HL ABR-2MAB-HK
ABR-2MAB-HG ABR-2MAB-HB ABR-2LAB-HY ABR-2LAB-HW
ABR-2LAB-HK ABR-2LAB-HG ABR-2LAB-HB

Rev. 1 Apr. 2024