

PRODUCT WARNING ⚠ ⚠ ⚠

Read and save all instructions before installing and using this product.
TO REDUCE THE RISK OF FIRE, ELECTRIC SHOCK, OR INJURY TO PERSONS,
OBSERVE THE FOLLOWING:

1. This humidifier is hot when the heat mode is in use. To avoid burns, do not let bare skin touch hot surfaces. Allow the unit to cool before installing, servicing, or moving this product.
2. This product is not intended for users who lack experience with and knowledge of this product, children, or those with reduced physical, sensory, or mental capabilities, unless under supervision by a qualified individual responsible for their safety.
3. Only use distilled water, and do not pour water into the vapor pipe. This will prevent your humidifier from functioning properly.
4. Do not attempt to hardwire this product. Performing any retrofitting actions may result in personal injury and/or electrical damage, and will void this product's warranty.
5. This product must not be used or placed in potentially hazardous locations such as flammable, explosive, electrical, or chemical-laden atmospheres.
6. Do not insert or allow fingers or foreign objects to enter any ventilation or exhaust openings as it may cause electric shock, fire, or damage to this product. Do not block or tamper with this product in any manner while it is in operation.
7. Do not depend on the on/off programming as the sole means of shutting power from this product. Unplug the power cord before installing, servicing, or moving this product.
8. Do not operate this product while it is damaged, or if it malfunctions, has been dropped, or its cord is damaged in any manner.
9. Do not cover any power cords with rugs or other fabric materials.
10. Be careful not to damage or cut the cords or wire insulation (covering). Do not permit wires to come in contact with any sharp edges.
11. Do not tilt, incline, or lay this product on its side or back.

1

PRODUCT WARNING ⚠ ⚠ ⚠

BATTERY INFORMATION



BATTERY TYPE: CR2032
VOLTAGE: 3V

1. Immediately recycle and dispose of used batteries according to local regulations and keep away from children. Do NOT incinerate or dispose of batteries in a household trash bin.
2. Improper use of batteries may cause severe injury or death.
3. Contact a local poison control center for treatment information.
4. Non-rechargeable batteries must not be recharged.
5. Do not force discharge, recharge, disassemble, heat up, or incinerate used batteries. Doing so may result in injury due to venting, leakage or explosion resulting in chemical burns.
6. This product contains non-replaceable batteries.

DO NOT attempt to repair this product yourself!

All service and/or repairs must be done by an authorized technician and/or electrician. Contact our customer service department at support@acinfinity.com or (626) 923-6399 for product and warranty assistance.

2

PRODUCT CONTENTS



VPD HUMIDIFIER
(x1)



FLEXIBLE HOSE
(x1)



SENSOR PROBE
(x1)



UIS EXTENSION CORD (M-M)
(x1)



NEBULIZER BRUSH
(x1)



WIRE TIE
(x1)



HOOK AND LOOP TIES
(x2)

3

KEY FEATURES

SMART CONTROLS

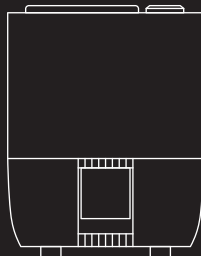
Touch interface offers 10 warm/cool vapor levels, humidity and VPD triggers, plus timer/cycle modes for automated humidity.

UV SANITATION

UV light kills bacteria and ensures that only pure, germ-free mist is dispersed into the environment, promoting healthier plant growth.

UIS™ COMPATIBLE

Connect to AI and UIS™ controllers to access intelligent programming, app controls and advanced automations.



TARGETED ZONE

Includes a stretchable hose to directly feed vapor to spot areas in spaces like grow tents, DIY grow rooms, and greenhouses.

INTELLIGENT SENSOR

Swiss-made corded probe precisely measures temperature, humidity and VPD for multiple smart control options.

PRECISION MOTOR

PWM smart motor adjusts its 10 speed levels to maximize humidification based on your current environmental readings.

4

INSTALLATION

STEP 1

Add water into the tank. You may detach the tank to fill it with water.

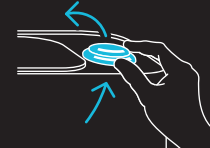


Do NOT pour water into the vapor pipe. This will prevent your humidifier from functioning properly.

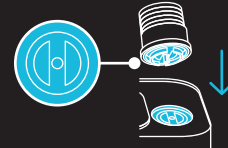
STEP 2

You may swap the directional flow cap with the included flexible hose.

A. Push and lift the side of the directional flow cap to release it.



B. Line up the vapor pipe frame to the gaps in the hose adapter and snap it on.



5

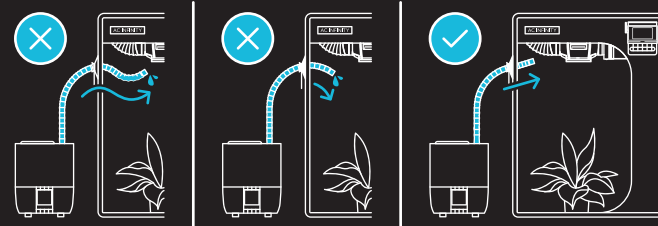
INSTALLATION

ROUTING THE HOSE

Do not bend the hose in a U-shape. Doing so will result in water pooling, which will spill into puddles and block humidity from emitting. This will also result in water flowing back into the base, which can overflow it and cause leakage.

In addition, make sure the hose is sloped upwards when routing it to your grow tent. Sloping the hose downward will result in condensation building up in the hose. This may further result in water dripping out and creating a puddle.

Dry the hose after each use.

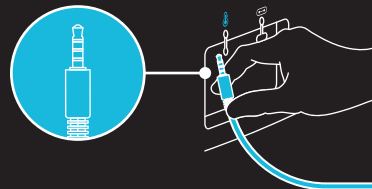


6

POWERING AND SETUP

STEP 1

Plug the sensor probe into the port located at the back of your humidifier.

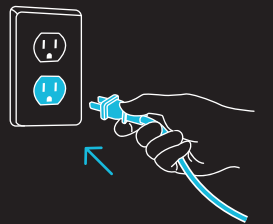


Ports must be capped when not in use to keep liquid and debris out.

Plugging the probe into the humidifier is not necessary if you are using a UIS controller, as the connected controller and its probe will override all onboard settings.

STEP 2

Plug your humidifier's power plug into an outlet to power it.



7

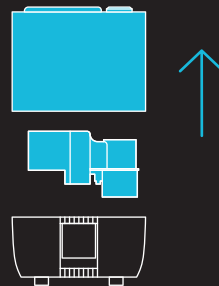
CLEANING

This humidifier is hot when the heat mode is in use. Unplug the unit and allow it to cool before installing, cleaning, or moving this product.

Exchange the water in the reservoir at least once every 4 days. Clean and maintain your humidifier, stop valve, and filter at least once a week. The filter is used to catch any debris or particles that may be in the water.

STEP 1

Unplug your humidifier and remove the tank and the base guard from the base.



8

STEP 2

Pour out any water sitting in the base. Pour two cups of distilled water and one tablespoon of vinegar into the base. Let it sit for five minutes.



CLEANING

STEP 3

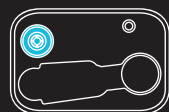
Remove any build-up from the nebulizer and stop valve using the included brush.



STEP 4

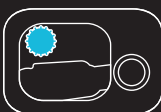
Wipe away any debris caught in the stop valve and filter using the included brush.

STOP VALVE



The stop valve is located under the tank.

FILTER



The filter is located at the bottom of the inside of the tank.

STEP 5

Pour out the vinegar water mixture and wipe the base dry. Replace the tank to finish.



9

PROGRAMMING

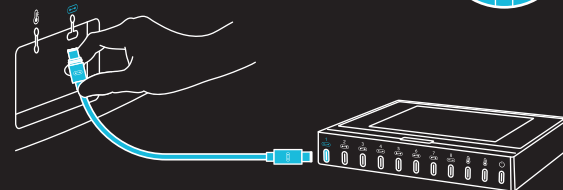
This humidifier is compatible with specific controller models. Please visit our website www.acinfinity.com for more information.

EXTENSION CABLE

Use the included UIS M-M extension cord to connect your humidifier to your controller (not included).

Plug the UIS connector with the gasket end into your humidifier. The gasket is specially designed to protect against liquids and dust.

Your controller will override all onboard settings, assume control (parameters must be adjusted on your controller), and shut off your dehumidifier's display and touch functions when connected in this manner.



CONTROLLER AI+ shown

10

MORE INFORMATION

PROGRAMMING



For in-depth programming instructions, scan this QR code to view a digital manual.

WARRANTY

Our warranty program is our commitment to you, the original customer, that product sold by AC Infinity Inc. will be free from defects for TWO YEARS from the date of purchase. If you have any issues with this product, contact us and we'll happily resolve your problem or issue a full refund!



WEBSITE | www.acinfinity.com
EMAIL | support@acinfinity.com
PHONE | 626-923-6399, 9 am to 5 pm PST
ADDRESS | 21880 BAKER PARKWAY
CITY OF INDUSTRY, CA 91789

DEALERS

EMAIL | dealers@acinfinity.com
PHONE | 626-838-4656, 9 am to 5 pm PST

MANUAL CODE CFW2410X1

COPYRIGHT © 2025 AC INFINITY INC. ALL RIGHTS RESERVED

No part of the materials including graphics or logos available in this booklet may be copied, photocopied, reproduced, translated or reduced to any electronic medium or machine readable form, in whole or in part, without specific permission from AC Infinity Inc.

11

CLOUDFORGE SERIES QUICK START GUIDE

AC INFINITY