

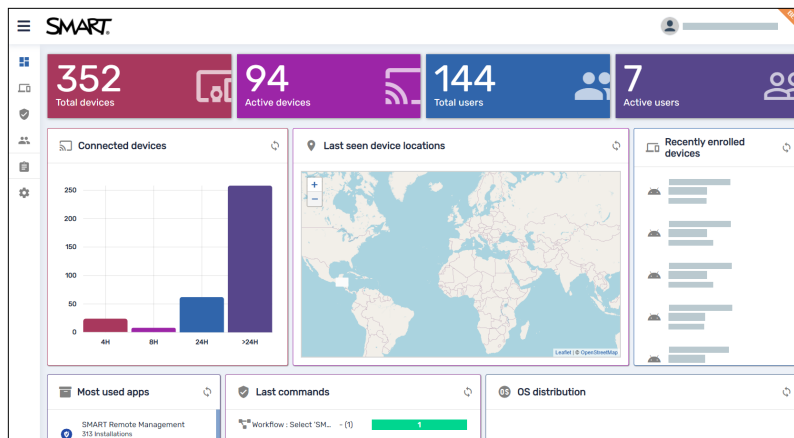


User interface comparison

SMART Remote Management


When you first sign in to SMART Remote Management, a window appears. This window includes information about the new user interface and allows you to switch to it.

The new use interface is faster, more secure, and provides new features and capabilities.



This table lists the main differences between the new and existing user interfaces:


Area	New user interface	Existing user interface
Single sign-on (SSO)	Users can sign in to SMART Remote Management using their Google™ or Microsoft® accounts rather than having to use their SMART Remote Management accounts (if set up first by admins).	Users can only sign in to SMART Remote Management using their SMART Remote Management accounts.
Dark theme	You can switch between light and dark themes in the new user interface.	You can't switch between light and dark themes in the existing user interface.
Languages	The new user interface is available in the same languages as the existing one as well as Catalan.	The existing user interface is available in the following languages: <ul style="list-style-type: none">• Arabic• Chinese (Simplified)• Chinese (Traditional)• English (US)• English (UK)• French• German• Hebrew• Hungarian• Italian• Japanese• Korean• Polish• Portugese• Russian• Slovak• Spanish• Turkish

Area	New user interface	Existing user interface
Dashboard	<p>The <i>Dashboard</i> view includes the following panels in the new user interface:</p> <ul style="list-style-type: none"> • Total devices • Active devices • Total users • Active users • Connected devices • Last seen device locations • Recently enrolled devices • Most used apps • Last commands • OS distribution 	<p>The <i>Dashboard</i> view includes the following panels in the existing user interface:</p> <ul style="list-style-type: none"> • Total devices • Active devices • Total users • Active users • Connected devices • Last seen device locations • App stats¹ • Last commands • OS distribution
Command access in the <i>Devices</i> view	<p>The following commands are accessible from the toolbar in the <i>Devices</i> view:</p> <ul style="list-style-type: none"> • Remote • Install package • Advanced message • Device settings • Policies • Workflow <p>All other commands are accessible from the More actions *** menu, and you can pin commonly used commands to the top of the menu.</p>	<p>All commands are accessible from the Actions  menu.</p>
Device dashboard	<p>In the device dashboard, you can view detailed information about a device and its apps, and you can enable, disable, start, stop, and clear data for specific apps.</p>	<p>In the device dashboard, you can view less detailed information about a device and its apps than in the new user interface, and you can enable, disable, start and stop (but not clear data for) specific apps.</p>

¹Corresponds to "Most used apps" in the new user interface

SMART Remote Management

User interface comparison

Area	New user interface	Existing user interface
Groups	You can find groups by clicking Groups in the <i>Devices</i> view.	You can find groups in the <i>Groups</i> view.
Filters	You can create and save filters using the Filters  button in the <i>Devices</i> view. You can also filter the <i>OS</i> , <i>Policy-Kiosk</i> , and <i>Tags</i> columns.	You can create and save filters by clicking FILTERS & GROUPS in the <i>Devices</i> view.
Triggers	Triggers are referred to as “Schedulers and triggers” in the new user interface.	Triggers are referred to as “Triggers” in the existing user interface.

smarttech.com/support
smarttech.com/contactsupport

© 2023 SMART Technologies ULC. All rights reserved. The SMART logo, smarttech, and all SMART taglines are trademarks or registered trademarks of SMART Technologies ULC in the US and/or other countries. All third-party product and company names may be trademarks of their respective owners. Contents are subject to change without notice. June 21, 2023.