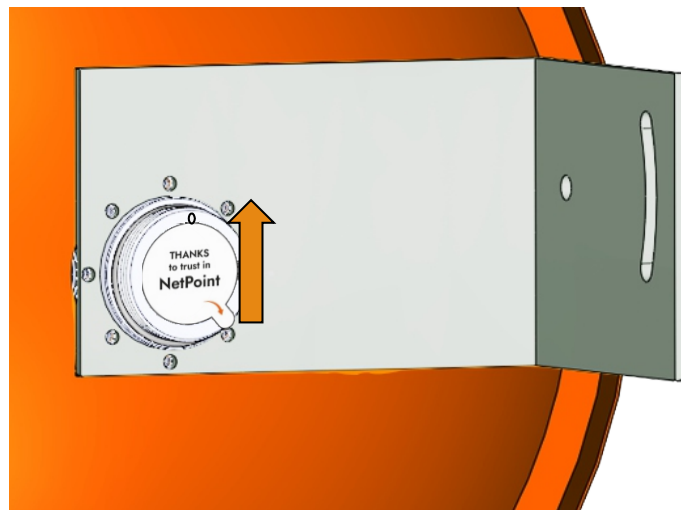
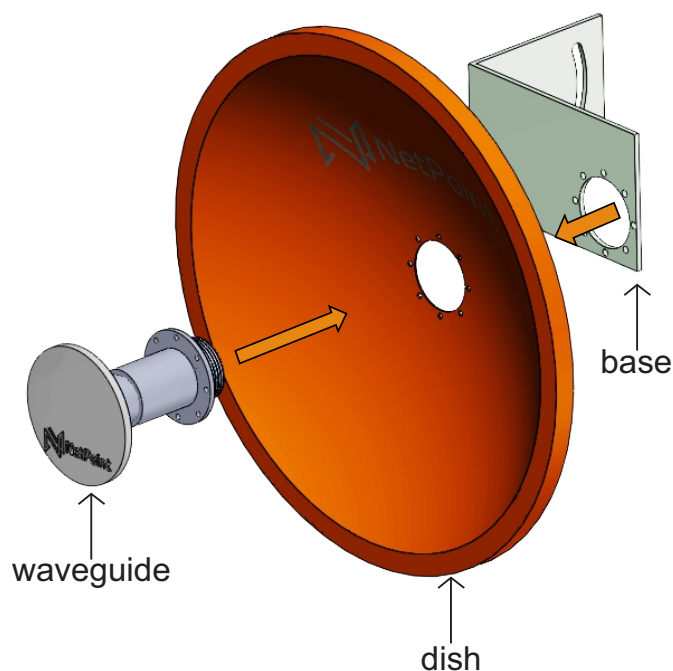


Wireless Antenna

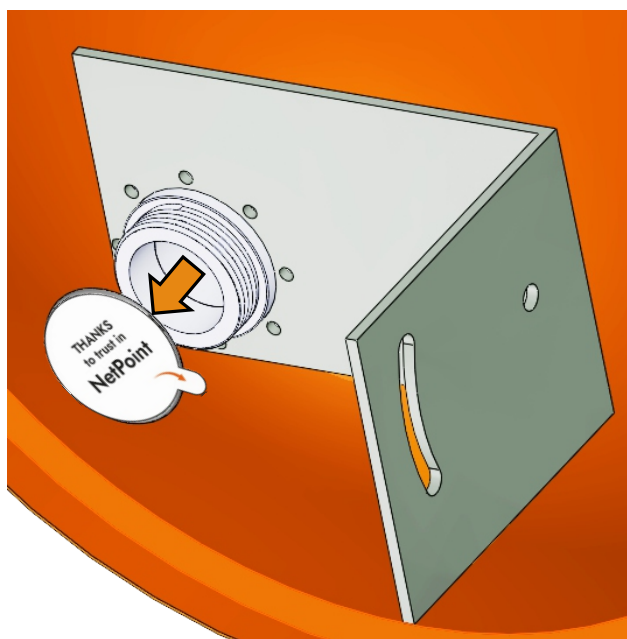
NPPRO

ASSEMBLY MANUAL

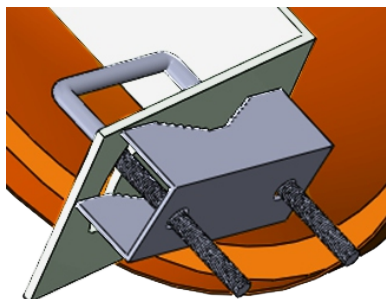
Components



The mark made on the washer should be in the direction of the track on the plate, since that ensures that the spoke is in a correct position.



As a final step, remove the label that carries as a seal to avoid the entry of moisture or dirt into the waveguide.



The clamp must be fixed with the nuts outward.

