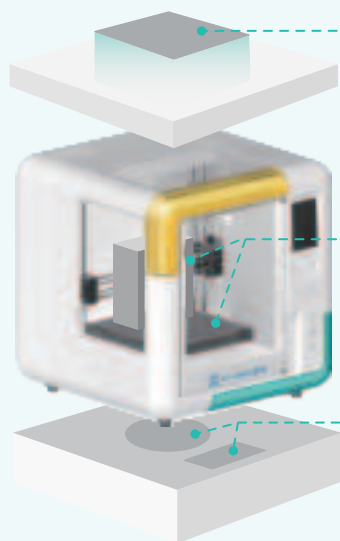


## CREATING TOYS BETTER THAN PLAYING

### Packing List



Quick Guide



Calibration Card



Power Cord



Filament Holder



Flexible & Magnetic  
Baseplate



PLA Filament



Pliers



Tool Kit



U Disk



Printable models



X-MAKER installer



X-PRINT installer

Carefully take out the  
nozzle cleaner!

### Notes

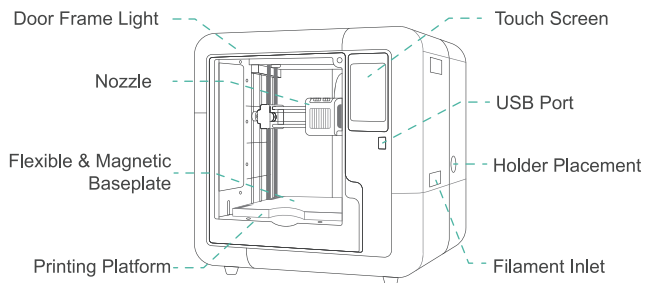
- AOSEED filaments are recommended. Do not frequently change filaments of various brands to avoid nozzle jamming.
- Please notice the supported versions when installing X-MAKER App
- Recommended ambient temp for using the printer is 0-35℃. Please turn off the printer when not in use

For more information, please visit [www.aoseed.com](http://www.aoseed.com)

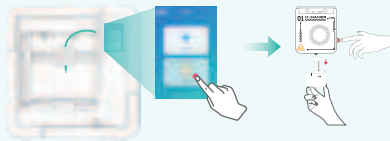


# How to start?

## X-MAKER 3D Printer

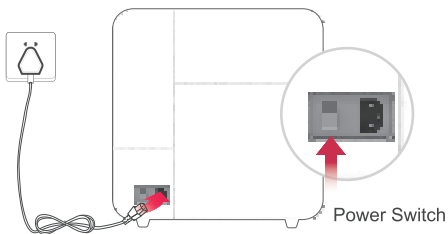


## Quick Swap Nozzle



- Unload the filament.
- Wait for the nozzle to cool down to below 45°C.
- Press the orange button and take off the nozzle with a little force.

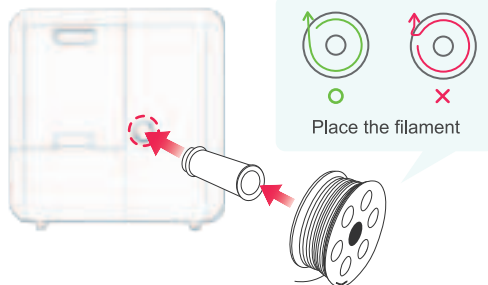
## 01 Power on



### Note

Please keep your hands dry when taking out the power cord. Connect the power cord first, then turn on the power switch.

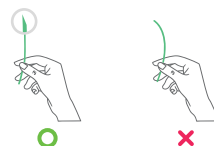
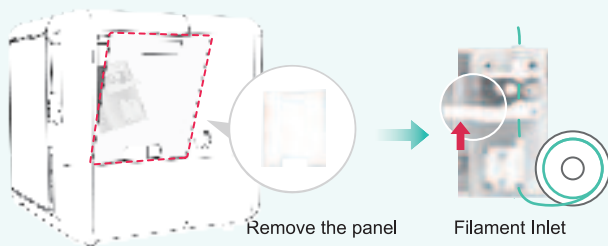
## 02 Install the filament holder



### Note

Please make sure the filaments are not knotted or intersected before placing the spool on the holder.

### 03 Install the filament



The tip of the filament should be straightened and cut into an oblique angle.

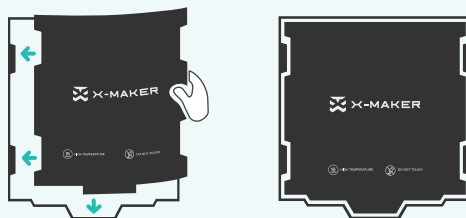
#### Note

Insert the tip into the filament inlet until the prefeeder grabs the material. Push the spring upward (as shown by the red arrow in the figure above), to make the filament enter smoothly.

### 04 Load the filament



### 05 Place the Baseplate



Go to "Filament -> Load" and wait until the filament outflows from nozzle. Repeat the above operation if the filament doesn't outflow. (Clean the nozzle before printing.)

Ensure the baseplate is aligned with the heating platform. Keep the baseplate clean and flat after placement.

## 06 Model printing



Creative U-disk Printable Models



Easy-to-use one-press printing with the X-MAKER App



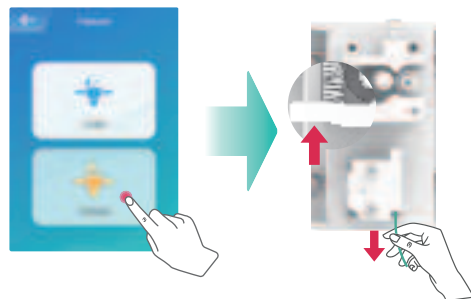
More model data processing with the X-PRINT

## 07 Print complete



Allow the printer to cool down below 45 °C before taking out the model in case of burns.  
Remove the support structures of models using pliers.

## 08 Unload the filament



Go to "Filament -> Unload" and wait until the filament outflows below the gear of extruder. Push the spring upward and pull out the filament. (If the tip of filament is round, please cut it off, or it will damage the FES.)

# X-MAKER App

## Download and installation

### For Windows PC

<https://www.aoseed.com/downloads>

Or, install the App from U disk

### For Android Tablet / iPad / Smartphones

<https://www.aoseed.com/downloads>

Or, search "XMAKER" in Googleplay / App Store

## About the X-MAKER App



### Print

AI-powered one-press  
printing feature



### Design

Two LEGO-style and  
user-friendly design



### Explore

Constant new gameplay  
and exploration



### Things

Various and growing  
well-designed model  
database



### Theme

Gamification 3D design  
mini programs

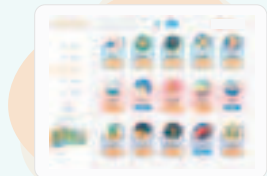


## ONE-TOUCH PRINTING Make Creativity Touchable.



### Things

Original well-designed model database with elaborate 3D models. Upon unboxing, you can create with one-press printing.



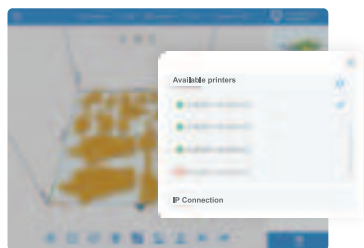
### Theme

Gamify 3D design mini-programs with various modeling: sketch-based, revolving, building block and parameter. Easy to DIY your digital creations.



### Design

Two free design software: 'digital building blocks' and 'digital clay', which are compatible with all 3D models and help you realize advanced creativity.



High-speed Wi-Fi & Easy-to-use One-press Printing