



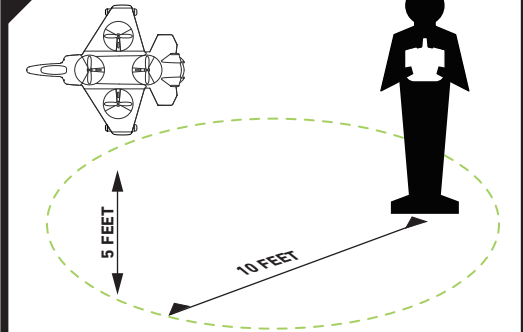
OPERATING DRONE

Printed in China

1 Preflight Checklist

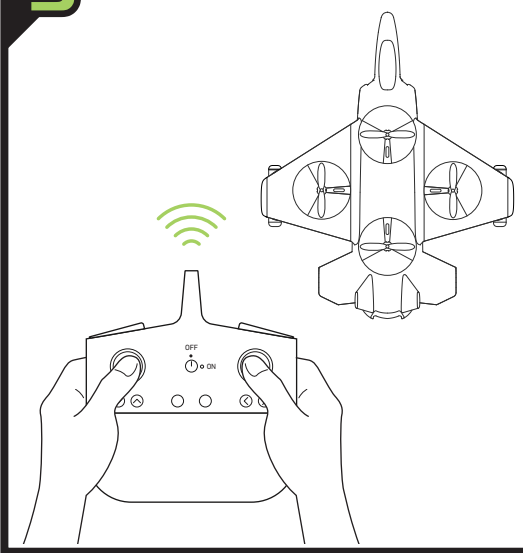
1. Read all warnings and instructions.
2. Install remote batteries. (See page 4)
3. Make sure that drone and remote are powered off.
4. Charge batteries. (See page 4)
5. First time operators should practice indoors.

2 Choose an indoor location

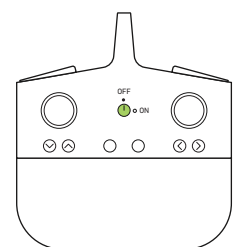


Always turn off remote prior to retrieving or picking up drone. This will help you avoid accidentally activating propellers.

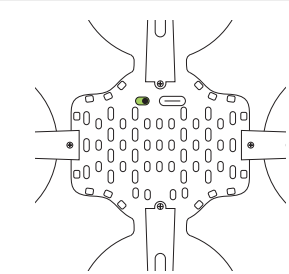
3 Pairing Drone



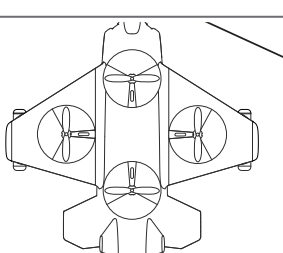
Make sure your remote is off.



Slide drone switch on.

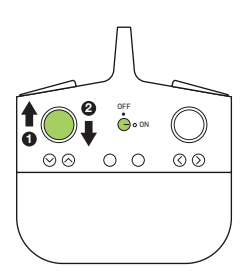


Place drone on a flat even surface.

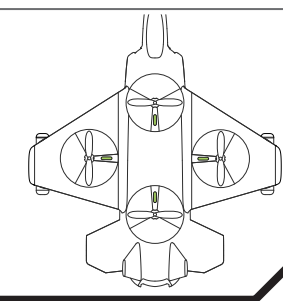


For ease of control, the red rear lights should be toward you.

Turn on the remote control. Push left throttle stick up and then down.



The drone's lights will flicker during the pairing process and then remain on once it has paired.

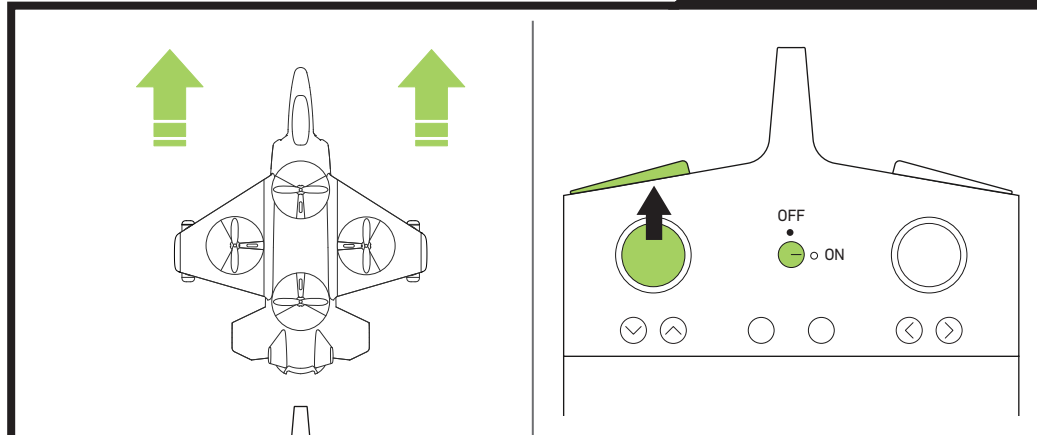


6

OPERATING DRONE

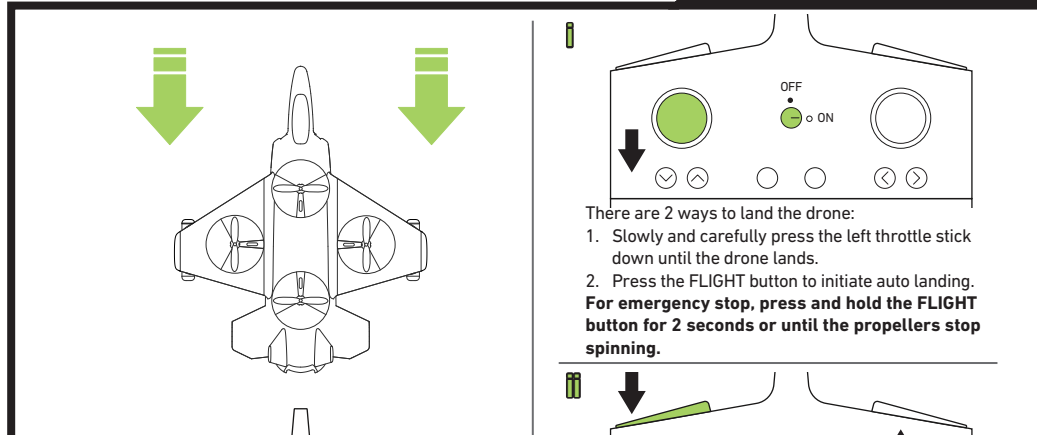
Printed in China

TAKE OFF



- There are 2 ways to launch the drone:
1. Slowly press the left throttle stick forward. The drone will begin to rise.
 2. Press the FLIGHT button. The drone will rise and hover.

LAND



- There are 2 ways to land the drone:
1. Slowly and carefully press the left throttle stick down until the drone lands.
 2. Press the FLIGHT button to initiate auto landing. For emergency stop, press and hold the FLIGHT button for 2 seconds or until the propellers stop spinning.

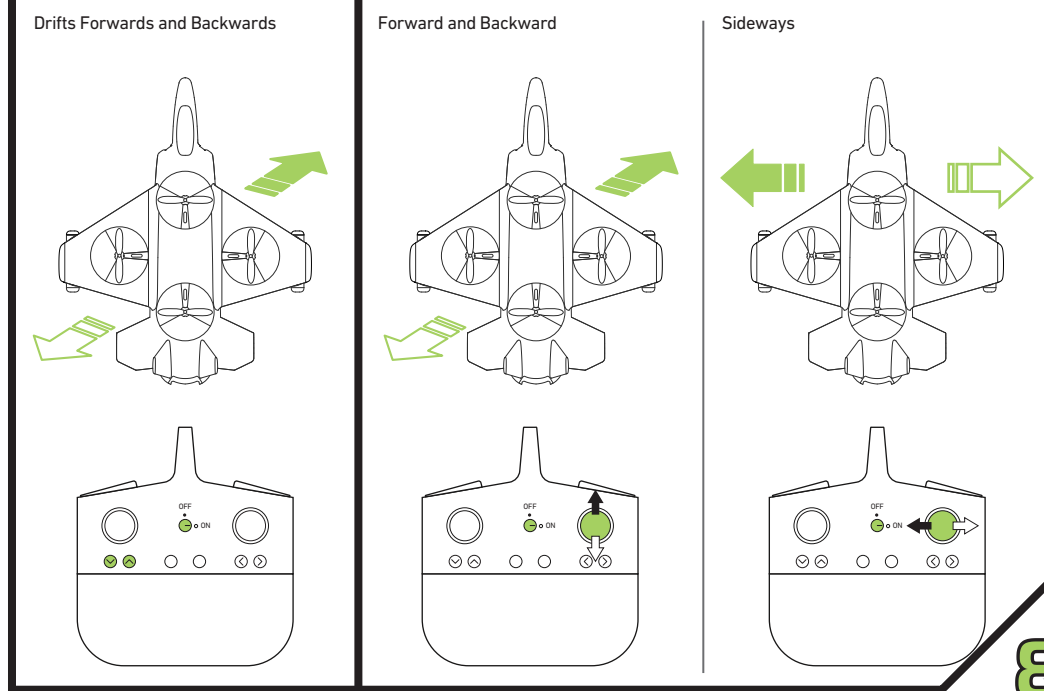
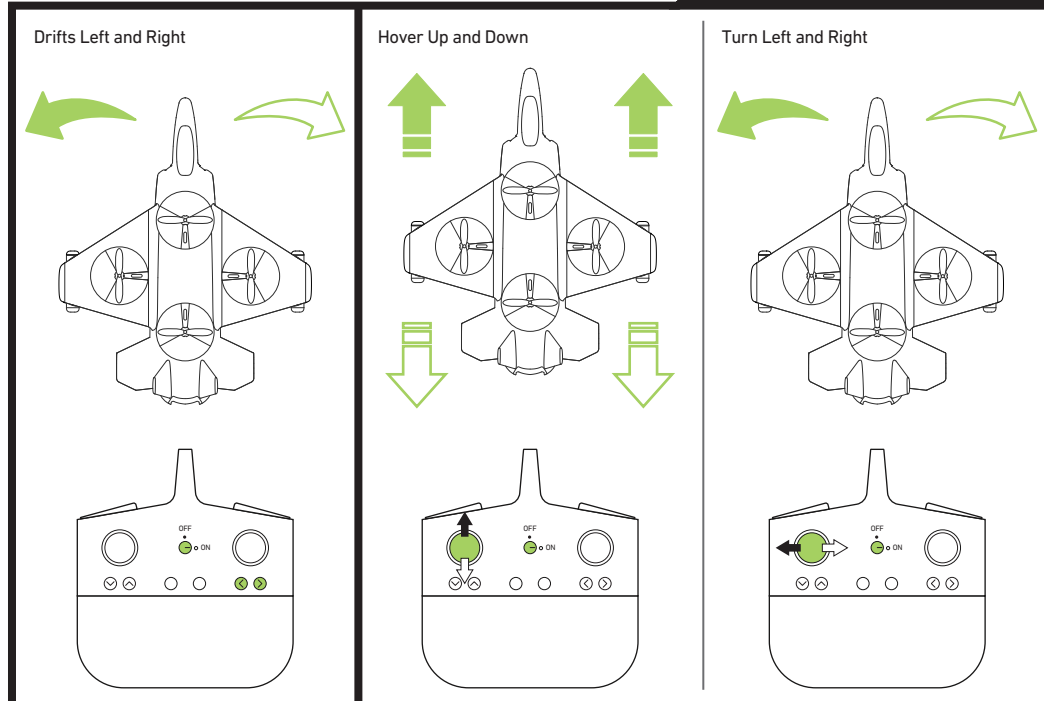
If the drone begins to drift, you can correct the drone's direction with the direction stick on the right.

7

OPERATING DRONE

Printed in China

FINE-TUNING/DIRECTION

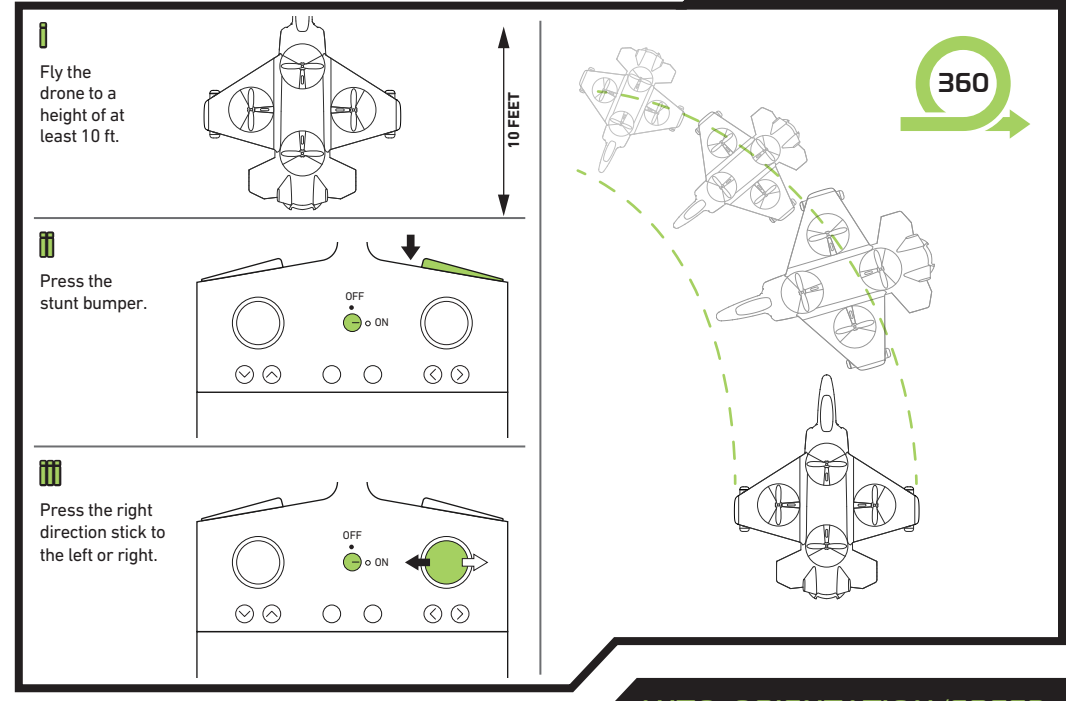


8

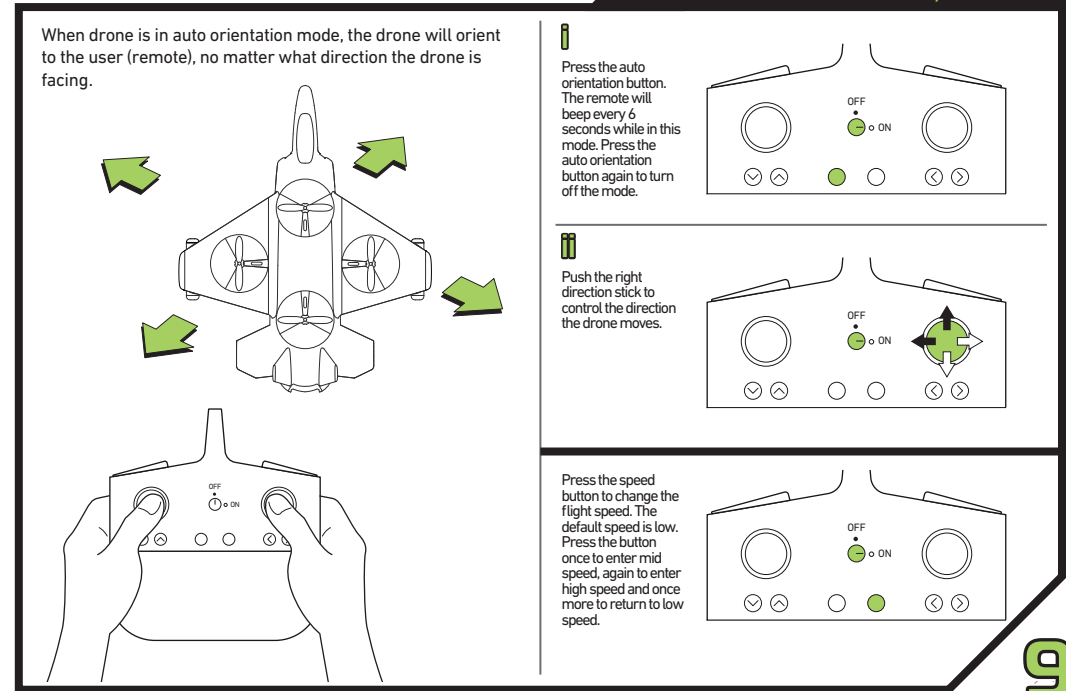
ADVANCED MODES

Printed in China

STUNT



AUTO-ORIENTATION/SPEED



9

TIPS & TROUBLESHOOTING

Printed in China

TIPS

- Do not crash drone into sand or dirt. Drone gears may become clogged.
- When first learning to fly, practice lifting off and hovering.
- Stay several feet from walls and buildings.
- Always press throttle all the way down after crashing or when something gets stuck in propellers.
- Never fly drones above or near people, sudden changes in wind or other conditions could lead to unexpected crashes.
- Always use caution when flying drone vehicles, obey relevant laws, respect the privacy and property rights of others.
- Do not modify the drone or use it any way except for its intended purpose.

WARNING: Changes or modifications to this unit not expressly approved by the party responsible for compliance could void the user's authority to operate the equipment.

TROUBLE SHOOTING

When remote switch is turned on, the remote light does not illuminate:

- 1) Check that batteries in the remote are installed correctly
- 2) OR turn off the drone and remote controller and turn on again.
- 3) If the remote light still does not turn on, replace the batteries with new batteries.

During flight, the remote power LED is dim or remote distance is short:

- 1) Remote batteries are low. Land the drone immediately.
- 2) Replace old batteries.

Drone and remote properly pair but the drone will not lift-off:

- 1) Drone battery needs charging. Use the USB Charge Cable to connect the drone to power source.

After trimming the drone, flight is very unstable and it cannot fly properly:

- 1) One or more blades may be damaged. Replace damaged blades with replacement blades and try flying again. (See page 3)
- 2) Press and hold the two joysticks toe out for 3s to reset the gyrocope.
- 3) Turn on the drone and remote and then repeat the pairing process. (See page 6)

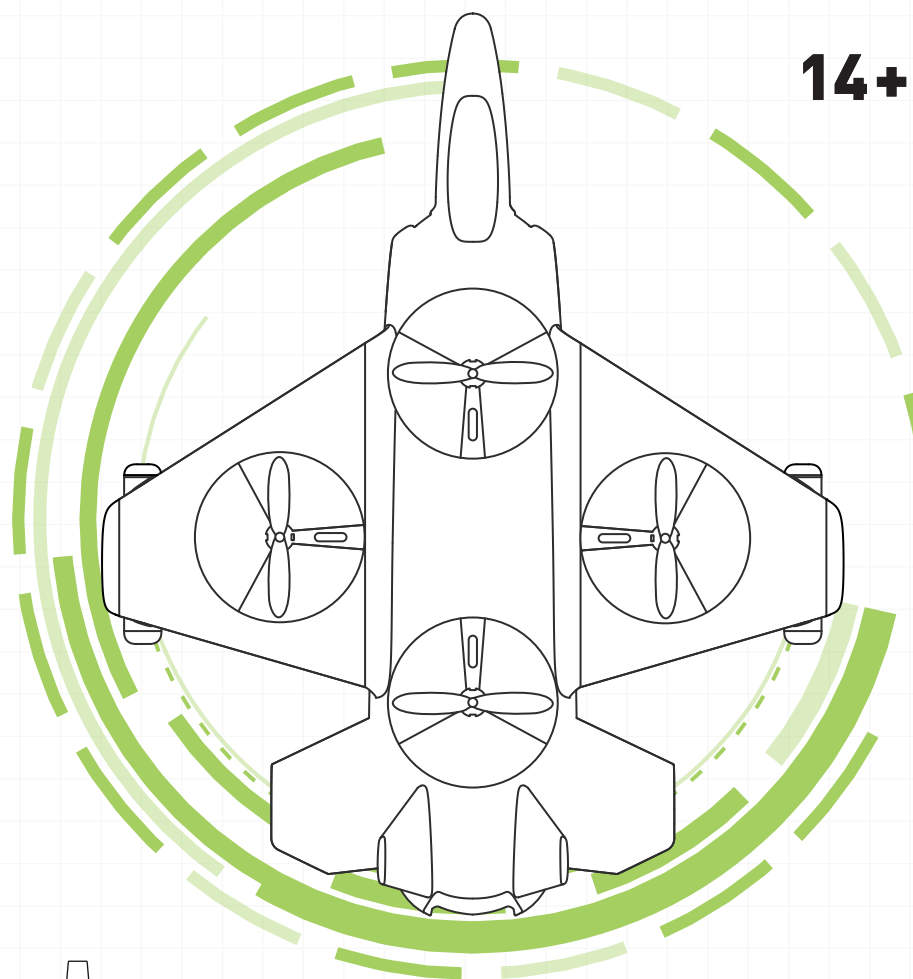
Remote and drone cannot be paired:

- 1) Remote must be within 12 feet of drone.

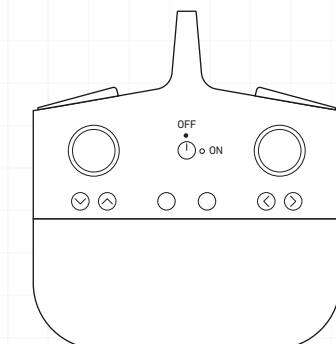
Note: If there is more than one unpaired drone within 12 feet, one must be successfully paired before others may be paired.

10

SHARPER IMAGE®



14+



BC **CHOKING HAZARD** - SMALL PARTS NOT FOR CHILDREN UNDER 3 YEARS. ADULT ASSEMBLY REQUIRED.

**THUNDERBOLT
JET X-2**

Printed in China

GETTING TO KNOW YOUR DRONE

Printed in China

PLEASE READ ALL WARNINGS AND INSTRUCTIONS PRIOR TO USE. KEEP THIS DOCUMENT AS IT CONTAINS IMPORTANT INFORMATION ABOUT YOUR DRONE.

CHARGING

- Drone must be charged before each use (USB Charge Cable included).
- Indicator light will turn off once fully charged.
- Install batteries in remote.

PAIRING

Before each flight pair the remote with the drone:

1. Turn your drone on and place on a flat, level surface.
2. Turn on the remote.
3. Push stick up and then down.
4. Repeat steps 1 and 2 if necessary.

IMPORTANT!

After a hard landing, turn drone and remote off. Then, repeat pairing!

DIRECTION

- The head of the Thunderbolt Drone is the front of the drone.
- The tail of the Thunderbolt Drone is the back of the drone.
- Not applicable in auto orientation mode.

REMOTE CONTROL

Practice flying your drone at heights below 10 feet and at low speed until comfortable with all controls to avoid unnecessary damage or injury.

- **Left stick:**
 - Up/down controls elevation
 - Left/right controls spin
 - **Right stick:** - Controls flight direction
 - **Trim:** - Reduces drone drift
- To power down the drone, hold the left stick down.

GENERAL WARNINGS

Printed in China

SAFETY WARNINGS:

- Not recommended for children under 14 years of age. As with all electrical products, precautions should be observed during handling and use to reduce the risk of electrical shock.
- Adult supervision is required at all times.
- Drive drone only on smooth flat surfaces.
- Never fly drones above or near people, sudden changes in wind or other conditions could lead to unexpected crashes.
- Always use caution when flying drone vehicles, obey relevant laws, respect the privacy and property rights of others.
- The drone shall never be modified or used for anything except its intended purpose.
- Before each use, an adult should review the product and battery to determine that no damage or hazards exist.
- DO NOT TOUCH SPINNING PROPELLERS.
- Do not allow anything to intentionally make contact in any way with spinning propellers
- Prevent contact with spinning blades by turning off remote prior to handling drone.
- Use caution and pay attention to your surroundings while operating drone.
- Do not fly drone into animals, people, or inanimate objects.
- Keep drone away from power lines, buildings, trees, public areas, and any other potentially hazardous areas.
- Do not operate in rain, heavy wind, and or any type of severe weather.
- Do not land drone on wet surfaces.
- Never touch or allow others to touch drone while it is flying.
- Always turn drone off when it is not in use.
- Always fly drone in large open areas.
- The drone will lose controlling capabilities if fly distance is more than maximum recommended altitude of 100 ft. Keep below 100 ft. to avoid potential crashing risk.



PLEASE RECYCLE OR DISPOSE OF ELECTRONICS PROPERLY

FAA WARNING

This drone weighs 0.20lbs (93g). As of November 2017, the Federal Aviation Administration (FAA) requires registration of unmanned aircrafts weighing more than 0.55lbs. Visit www.faa.gov/uas/registration for more information. Ongoing compliance with Federal, state and local laws regarding operation is an owner's sole responsibility.

WARNINGS

Printed in China

Warning: Changes or modifications to this unit not expressly approved by the party responsible for compliance could void the user's authority to operate the equipment.

Note: This equipment has been tested and found to comply with the limits for a Class B digital device, pursuant to part 15 of the FCC Rules. These limits are designed to provide reasonable protection against harmful interference in a residential installation. This equipment generates, uses and can radiate radio frequency energy and, if not installed and used in accordance with the instructions, may cause harmful interference to radio communications.

However, there is no guarantee that interference will not occur in a particular installation. If this equipment does cause harmful interference to radio or television reception, which can be determined by turning the equipment off and on, the user is encouraged to try to correct the interference by one or more of the following measures:

- Reorient or relocate the receiving antenna.
- Increase the separation between the equipment and receiver.
- Connect the equipment into an outlet on a circuit different from that to which the receiver is connected.
- Consult the dealer or an experienced radio/TV technician for help.

This device complies with Part 15 of the FCC Rules. Operation is subject to the following two conditions: (1) this device may not cause harmful interference, and (2) this device must accept any interference received, including interference that may cause undesired operation.

Sharper Image® name and logo are registered trademarks. Distributed by and © 2021 MerchSource, LLC, Irvine, CA 92618. All rights reserved.

The artwork and design of this manual are protected by US copyright law and may not be reproduced, distributed, displaced, published or used for any purpose without prior written permission. Altering, removing or reproducing any of the trademark or copyright notices on this package is not permitted.

PATENT PENDING

Printed in China

QUESTIONS OR CONCERNS?
PLEASE GIVE US A CALL... WE'RE HERE TO HELP

CUSTOMER SUPPORT (800) 374-2744

Before calling please locate the 16-Digit code printed on the back of your remote

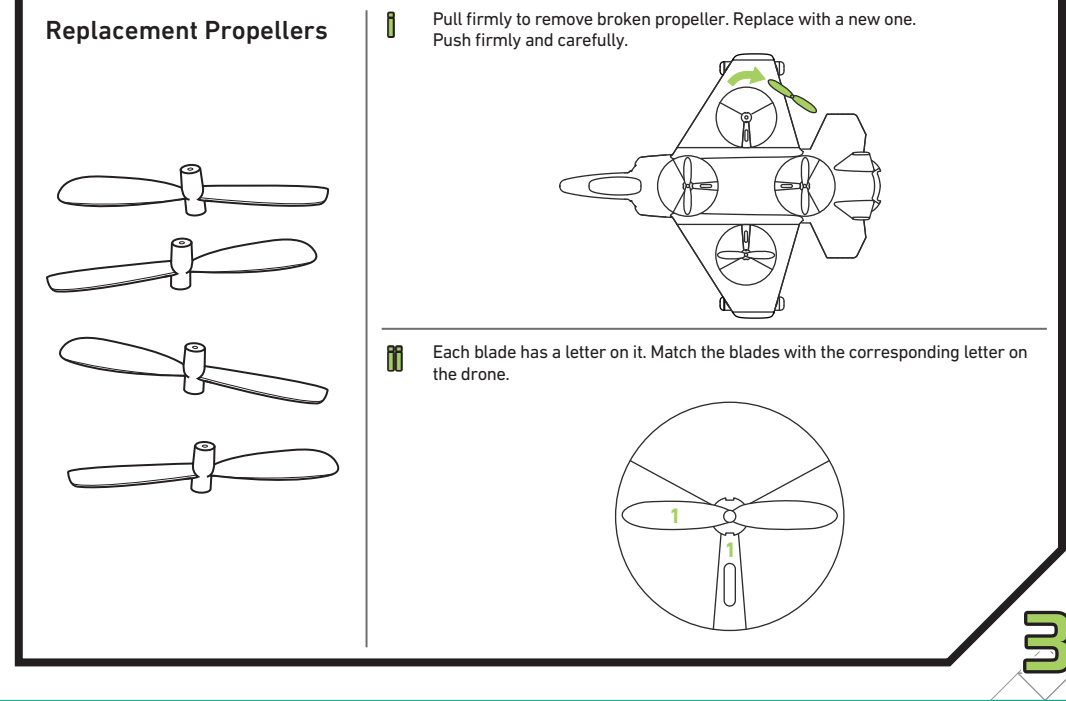
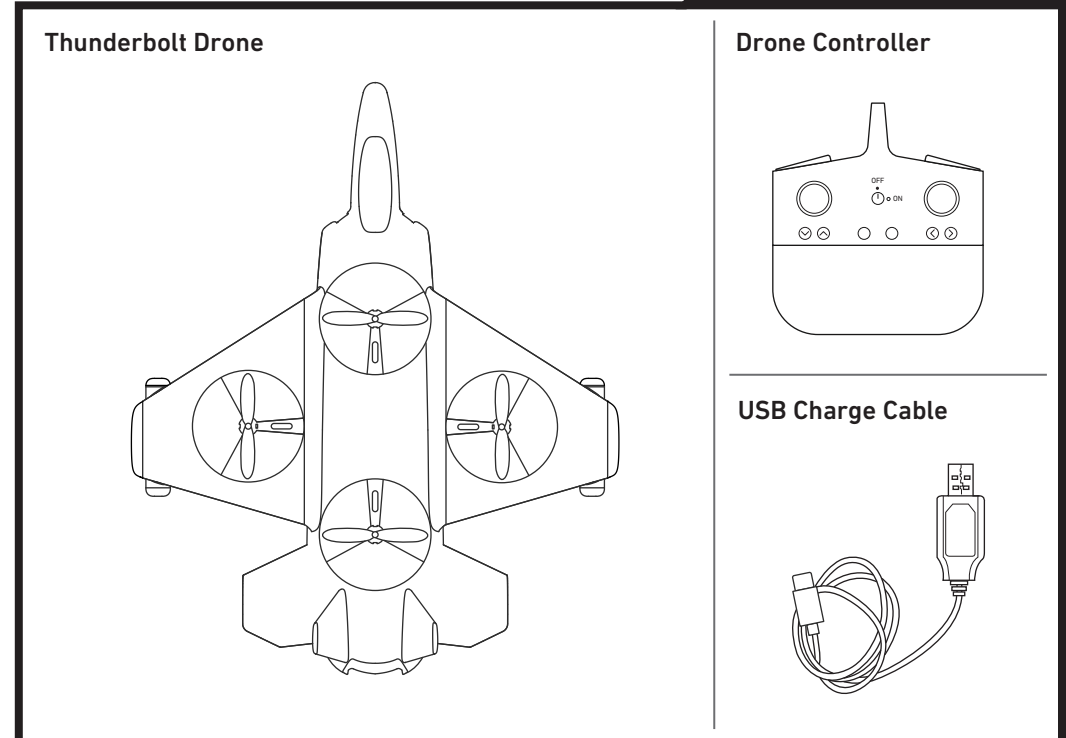


**WARNING: ONLY USE PROVIDED
USB CABLE FOR CHARGING**

CONTENTS

Printed in China

INSIDE THE BOX

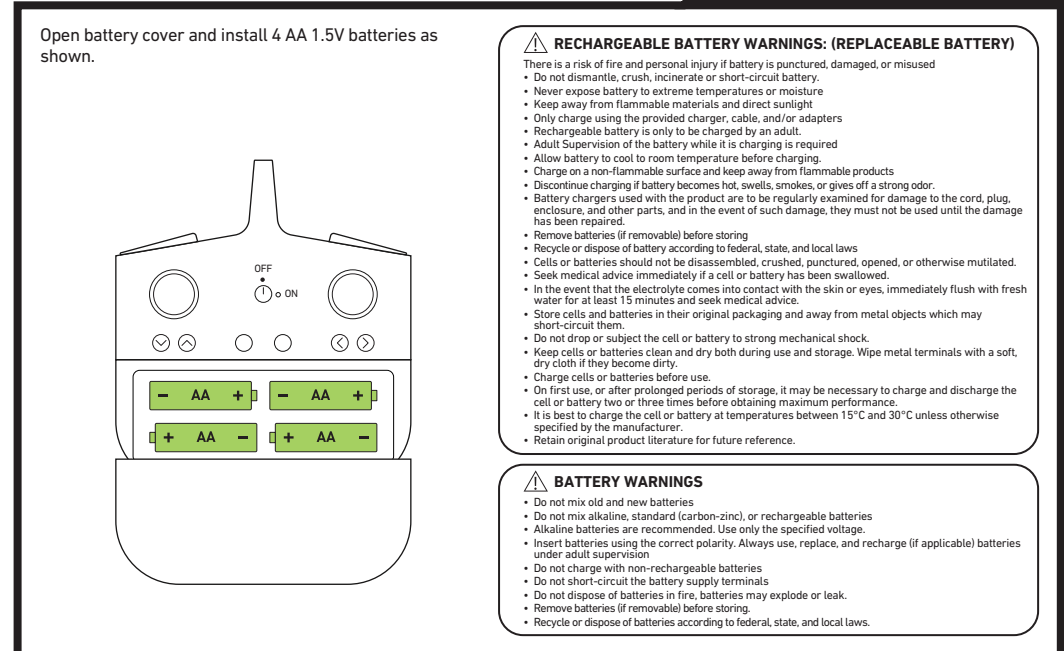


3

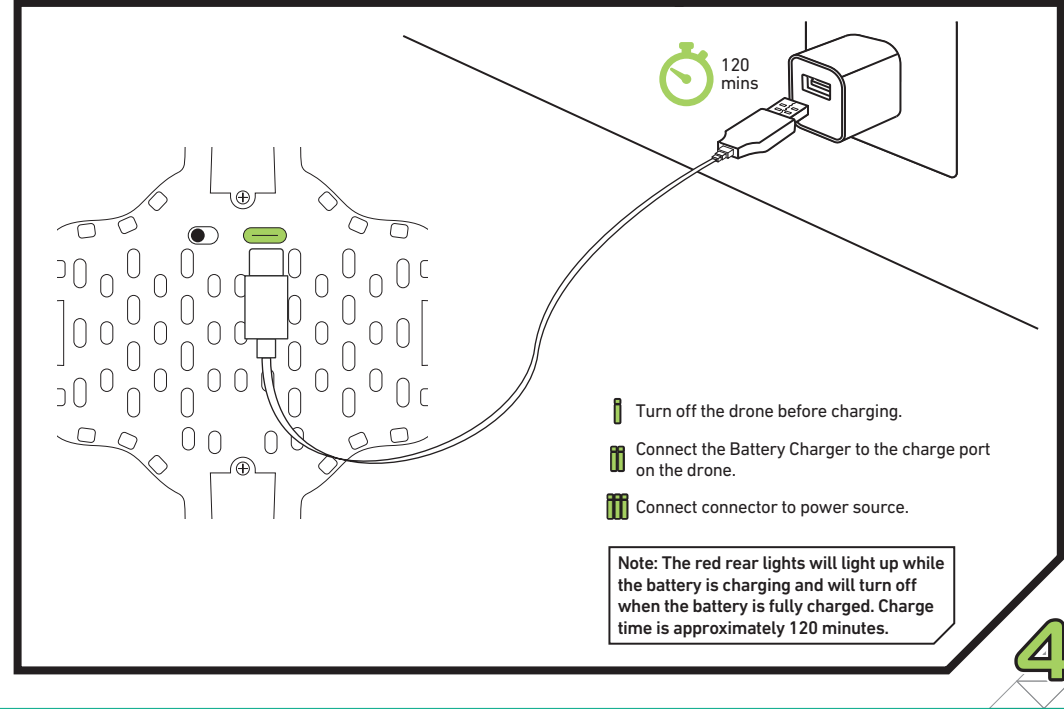
CHARGING/BATTERY

Printed in China

REMOTE



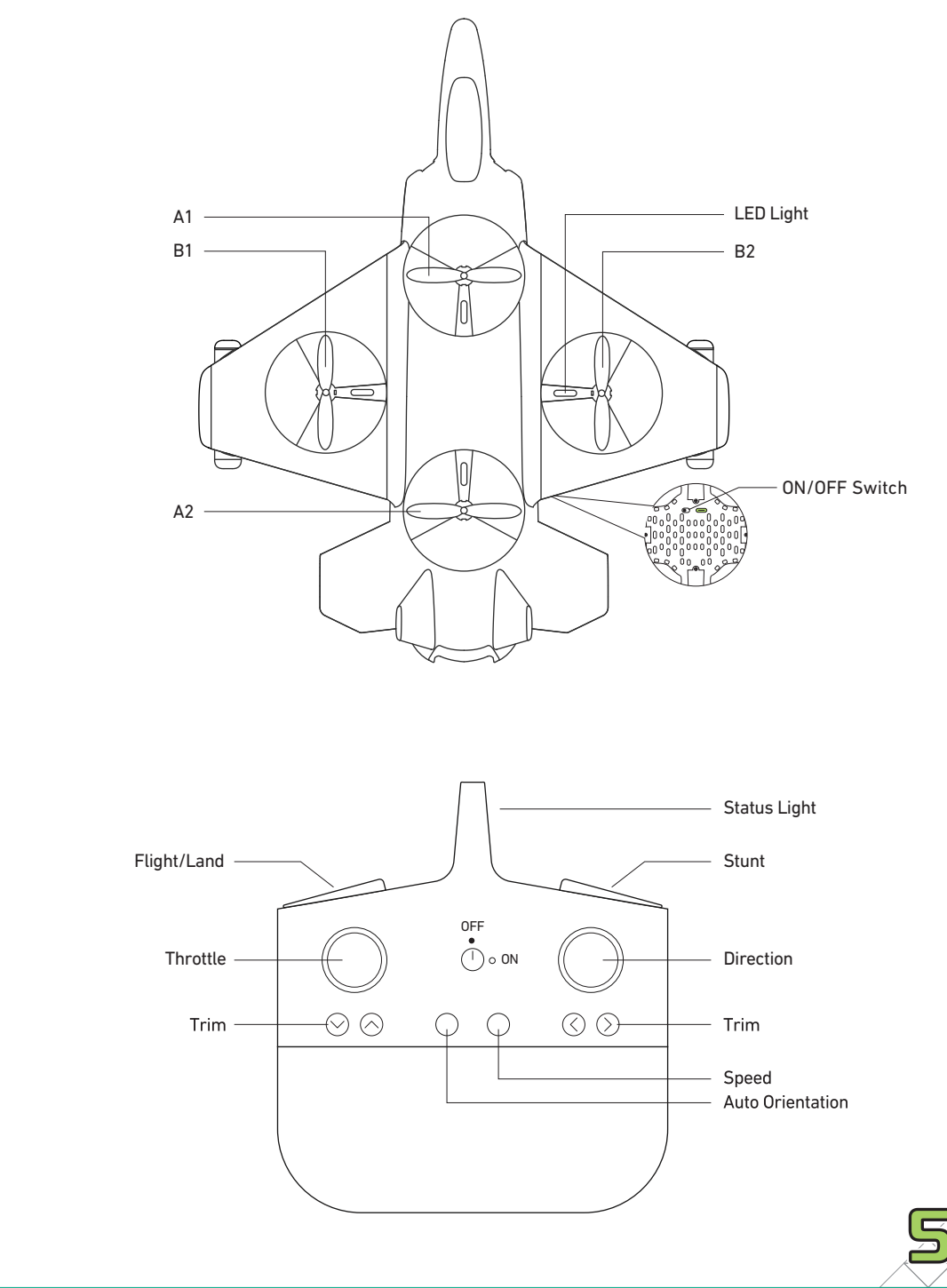
DRONE



4

OVERVIEW

Printed in China



5