

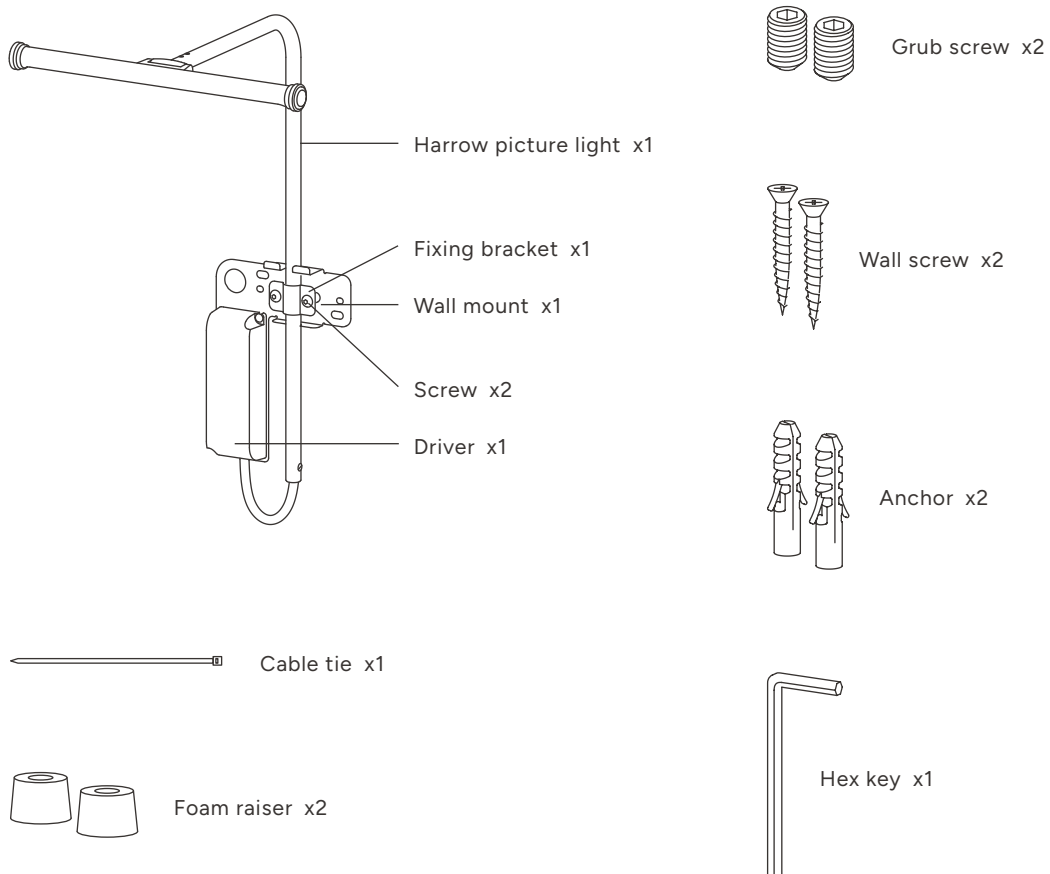
Picture lights

INSTRUCTIONS

Harrow picture light	1
Taylor picture light	5
Picture light LED replacement	9

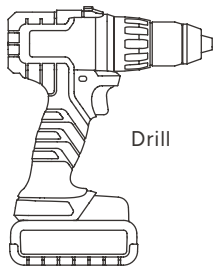
Harrow picture light

INCLUDED



Harrow picture light

TOOLS YOU'LL NEED



Drill



6mm drill bit



Flathead
screwdriver



Crosshead
screwdriver

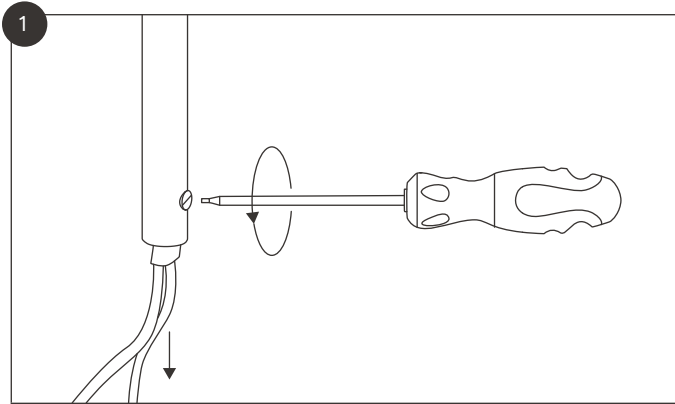
Location	Interior
Class	Class III
IP rating	IP20
Driver required	Yes, as supplied
Fire rating	No
Cable length	N/A
Bulb type	LED strip
Max wattage	8W
Bulb included	Yes
Switched	No
Dimmable	No*
Rated voltage (light)	12V or 24V
Rated voltage (driver)	230V-250V~
Rated frequency	50-60Hz

*Unless used with a compatible third-party dimmable driver.

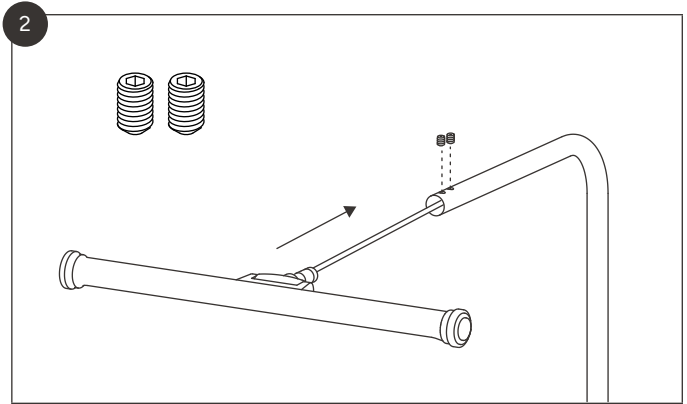


Warning: never plug a picture light into the mains electricity without a driver.
Doing so could cause irreparable damage to your product.

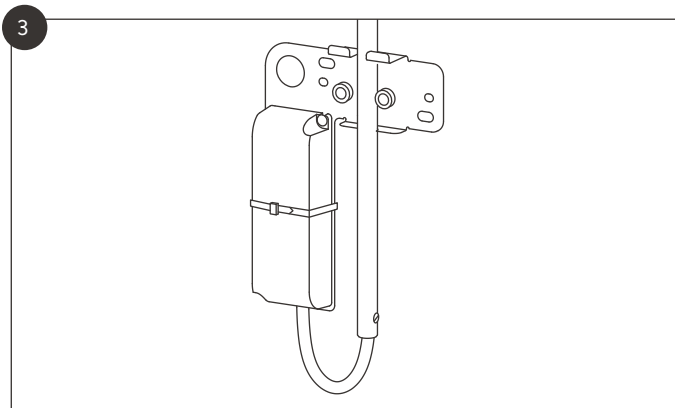
Harrow picture light



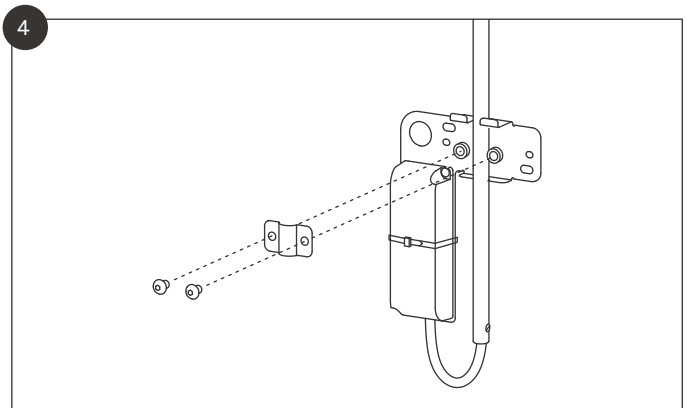
Loosen the lower grub screw to release the inner cable.



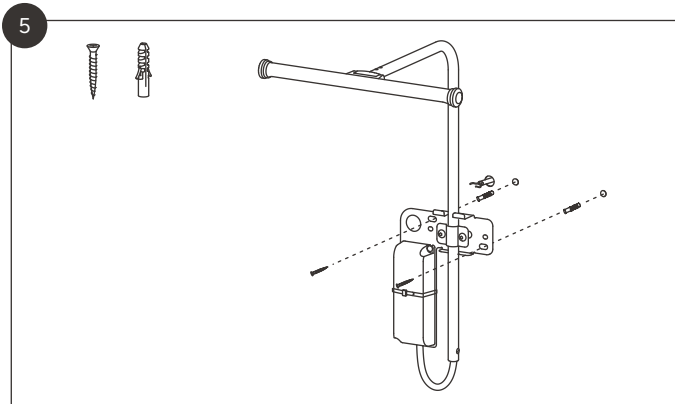
Attach the shade to the stem and insert the upper grub screws to fix in place. Tighten all grub screws.



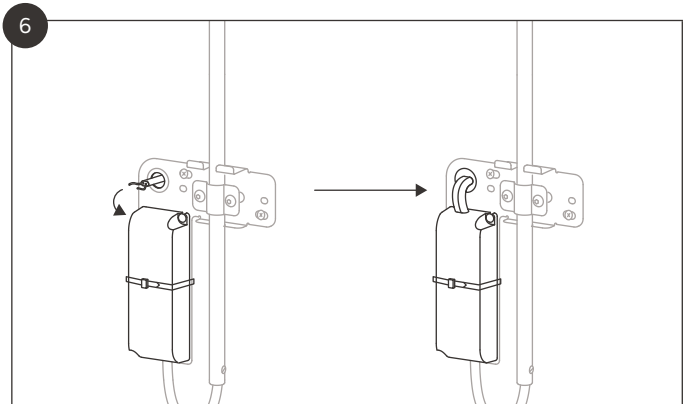
Use the cable tie to attach the driver to the wall mount and connect the driver.



Attach the picture light to the wall mount using the fixing bracket.

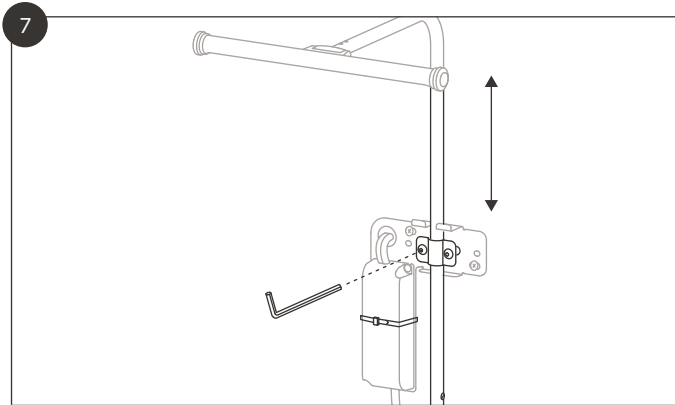


Use the screws and anchors provided to fix the light to the wall.

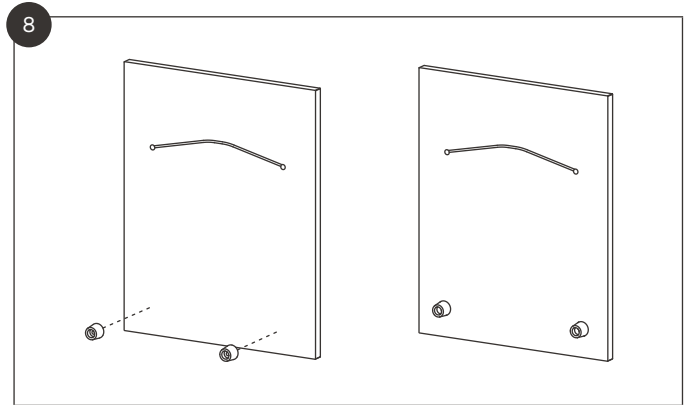


Connect power to the driver.

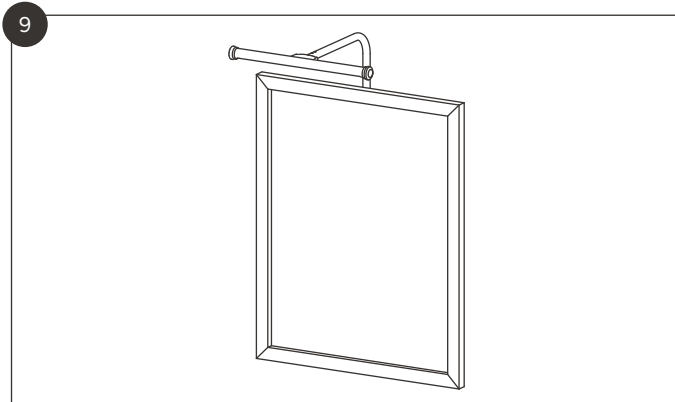
Harrow picture light



Loosen the fixing bracket screws to adjust the light's height.



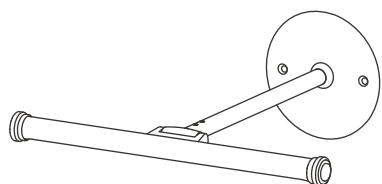
Optional: add foam raisers to the rear bottom corners of the frame.



Hang your chosen frame on the built-in hook on the wall mount.

Taylor picture light

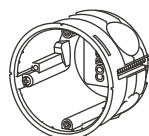
INCLUDED



Taylor picture
light x1



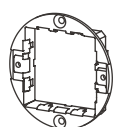
Hex key x1



Back box x1



Grub screw x2



Back plate x1



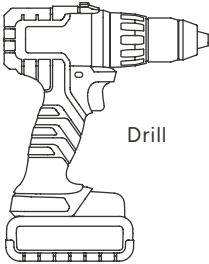
Flathead screw x2




Driver x1

Taylor picture light


TOOLS YOU'LL NEED




Drill



6mm drill bit



Flathead screwdriver



Crosshead screwdriver

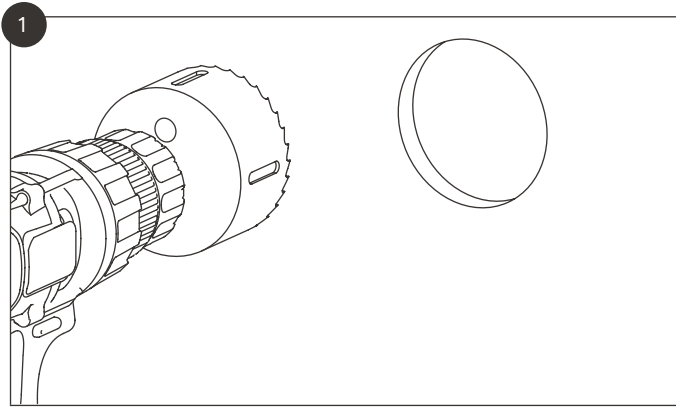
Location	Interior
Class	Class III
IP rating	IP20
Driver required	Yes, as supplied
Fire rating	No
Cable length	N/A
Bulb type	LED strip
Max wattage	8W
Bulb included	Yes
Switched	No
Dimmable	No*
Rated voltage (light)	12V or 24V
Rated voltage (driver)	230V-250V~
Rated frequency	50-60Hz

*Unless used with a compatible third-party dimmable driver.

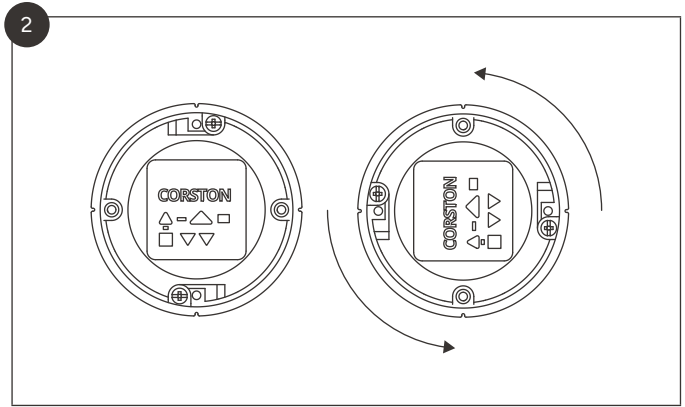


Warning: never plug a picture light into the mains electricity without a driver.
Doing so could cause irreparable damage to your product.

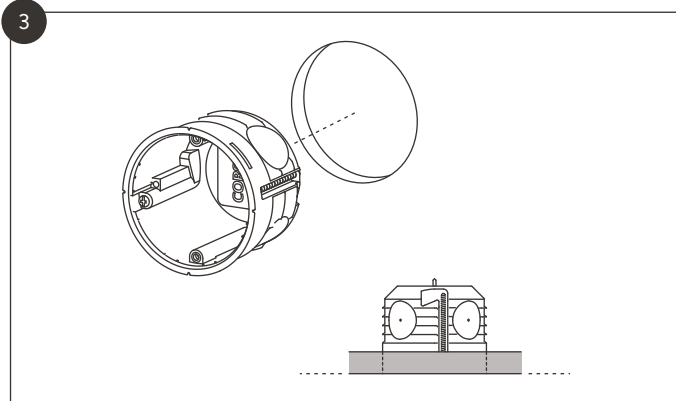
Taylor picture light



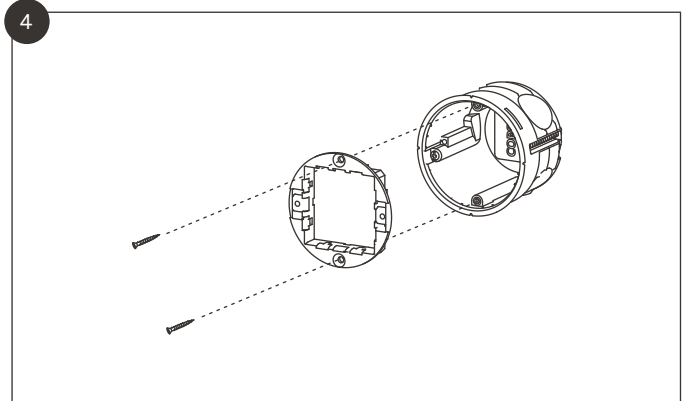
1 Drill a 71mm hole using our bespoke hole saw.



2 Before installing, rotate the back box 90 degrees anticlockwise (so that the logo is sideways).

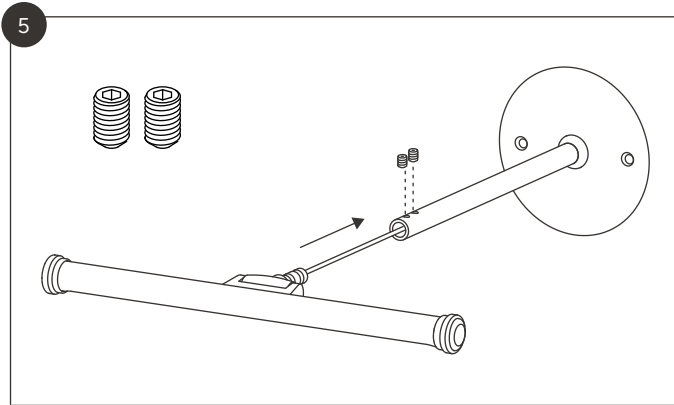


3 Fit the back box into your wall, making sure it's still rotated 90 degrees. The back box should be flush with the wall. Screw in place.

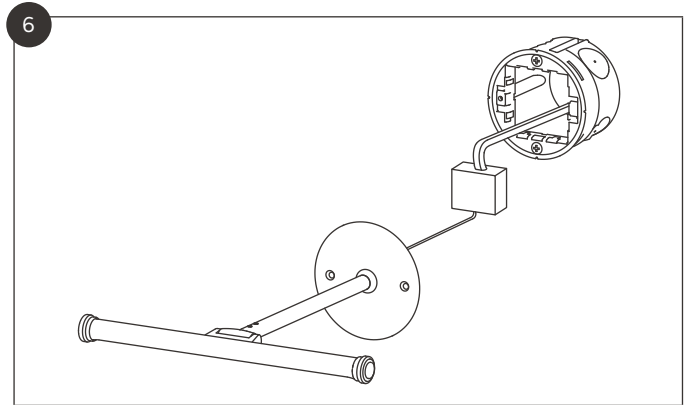


4 Attach the plate to the back box.

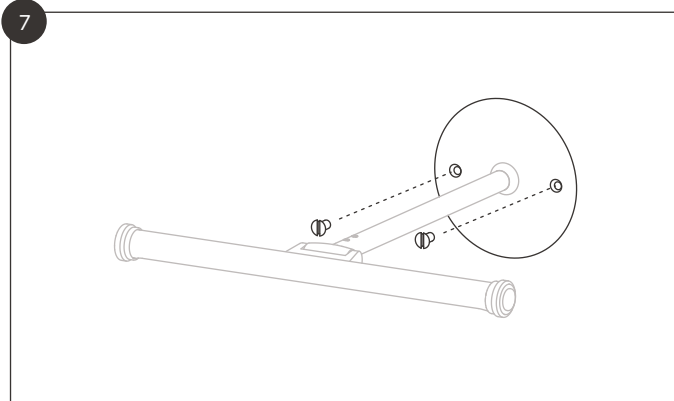
Taylor picture light



Attach the shade to the stem using the grub screws.

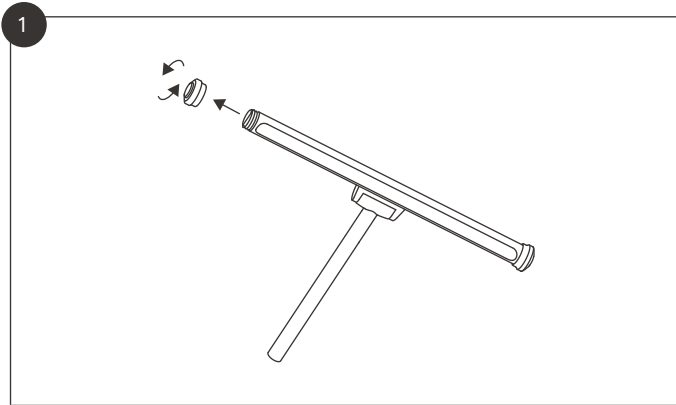


Connect the driver to the power supply.

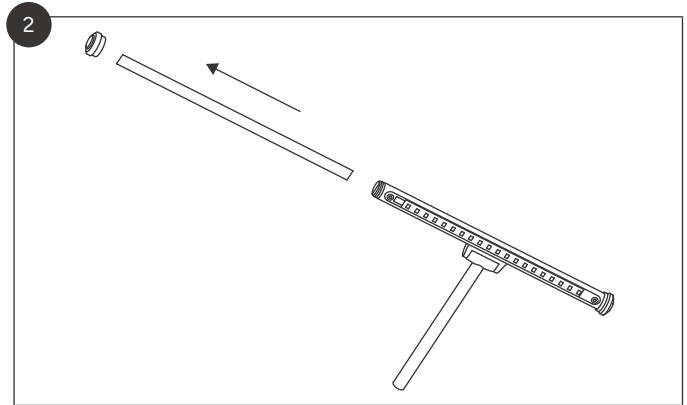


Mount the light onto the back plate.

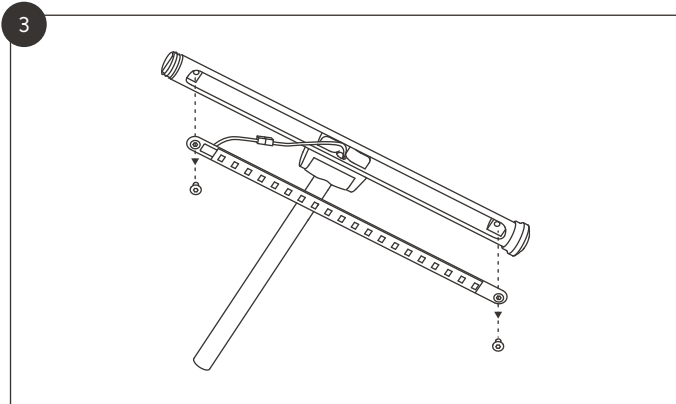
Picture light LED replacement



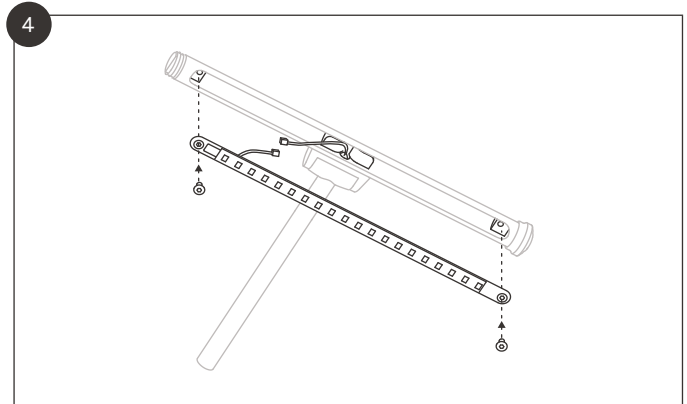
Unscrew the end cap.



Slide the diffuser out of the picture light.

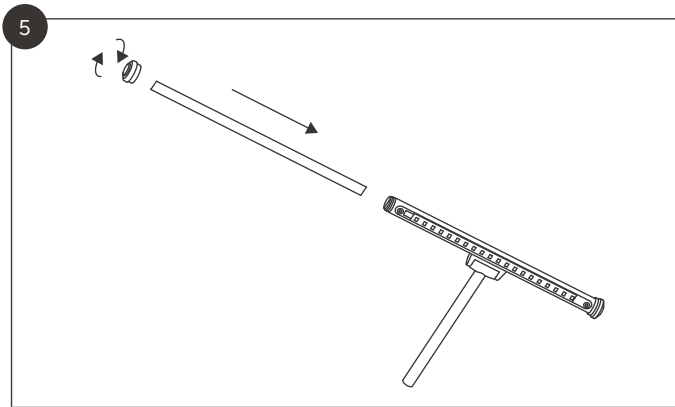


Unscrew the LED strip.



Unclip the wire connector and swap the LED strip.

Picture light LED replacement



Slide the diffuser back in and screw on the end cap.