

Polaris RZR 2014-2023 Tree Kickers 4 Seater

Thank you for choosing Rough Country for all your vehicle needs.

Please read instructions before beginning installation. Check the kit hardware against the kit contents shown below. Be sure you have all needed parts and know where they go.

If question exist, please call us @1-800-222-7023. We will be happy to answer any questions concerning this product.

Check all fasteners for proper torque. Check to ensure for adequate clearance between all components.

Periodically check all hardware for tightness.

KIT CONTENTS:

Driver Side Tree Kicker x1
Pass Side Tree Kicker x1

TOOLS NEEDED:

T40 Torx
1/4" Bit
Drill Motor
14mm Socket
19mm Socket

HARDWARE INCLUDED:

12mm-1.75 Hex Lock Nut x8
1/2" Flat Washer x8
L-Bolt x8
Slider Stand-off x8
3/8" U-Bolt x2
3/8" Flange Nuts x4
Cap Plug x4



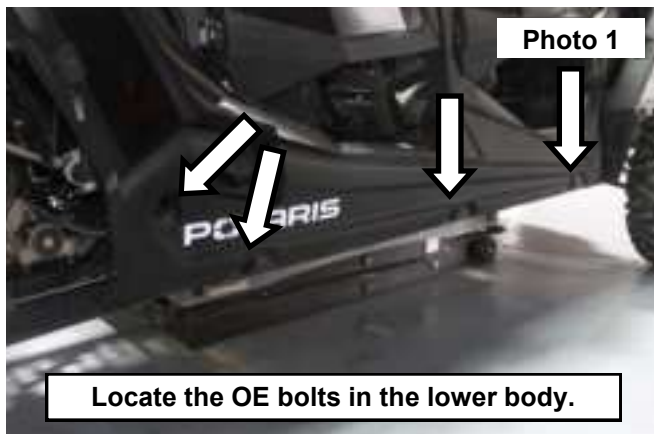
Torque Specs:

Size	Grade 5	Grade 8	Size	Class 8.8	Class 10.9
5/16"	15 ft/lbs	20ft/lbs	6MM	5ft/lbs	9ft/lbs
3/8"	30 ft/lbs	35ft/lbs	8MM	18ft/lbs	23ft/lbs
7/16"	45 ft/lbs	60ft/lbs	10MM	32ft/lbs	45ft/lbs
1/2"	65 ft/lbs	90ft/lbs	12MM	55ft/lbs	75ft/lbs
9/16"	95 ft/lbs	130ft/lbs	14MM	85ft/lbs	120ft/lbs
5/8"	135ft/lbs	175ft/lbs	16MM	130ft/lbs	165ft/lbs
3/4"	185ft/lbs	280ft/lbs	18MM	170ft/lbs	240ft/lbs



INSTALLATION INSTRUCTIONS

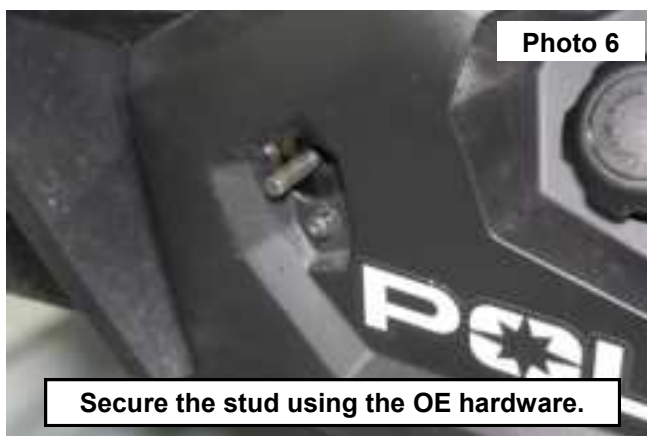
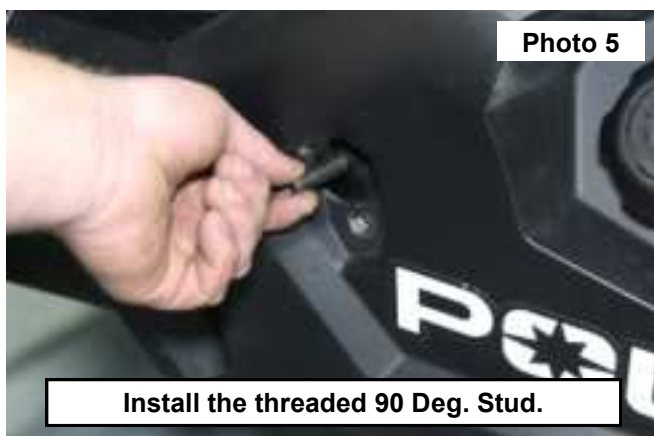
1. Locate the (4) OE bolts in the lower body panel. **See Photo 1.**
2. Remove the (4) bolts using a T40 Torx Bit. **See Photo 2.**



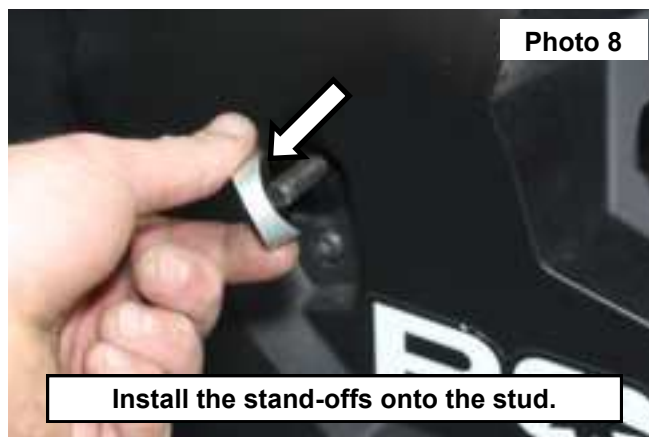
3. Drill out the threads from the (4) bolts removed. Use a drill motor and a 1/4" bit. **See Photo 3.**
4. Locate the threaded 90 Deg. Stud. **See Photo 4.**



5. Place the threaded 90 Deg. stud into the hole in the frame. **See Photo 5.**
6. Secure the threaded 90 Deg. stud using the OE hardware. Tighten each stud using a T40 Torx bit. **See Photos 6 and 7.**



7. Install the stand-offs onto the threaded stud with the radius toward the tube. **See Photo 8.**



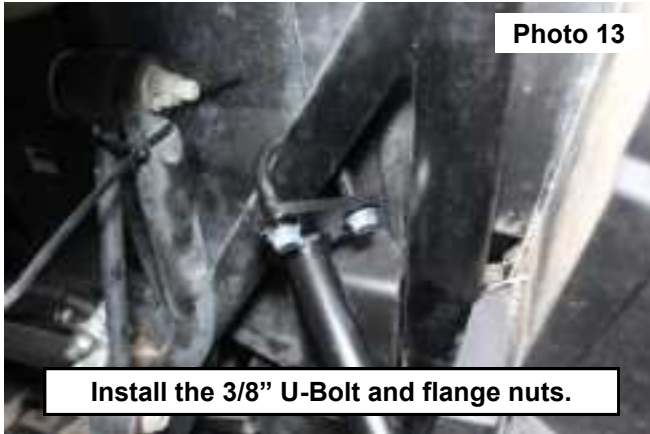
8. Install the stand-offs onto (4) of the threaded studs. **See Photo 9.**
9. Place the tree kicker onto the 4 threaded studs. **See Photo 10.**



10. Secure the tree kicker using (4) 12mm-1.75 hex nuts and (4) 1/2" flat washers. **See Photo 11.**
11. Tighten the installed nuts using a 19mm socket. **See Photo 12.**



12. Center the mounting bracket over the cage mount, then install the 3/8" U-bolt around the cage and into the tree kicker bracket, secure the U-bolt using (2) of the supplied 3/8"-16 Flange nuts. **See Photo 13.**
13. Tighten the (2) 3/8"-16 Flange nuts using a 14mm socket. **See Photo 14.**



By purchasing any item sold by Rough Country, LLC, the buyer expressly warrants that he/she is in compliance with all applicable, State, and Local laws and regulations regarding the purchase, ownership, and use of the item. It shall be the buyers responsibility to comply with all Federal, State and Local laws governing the sales of any items listed, illustrated or sold. The buyer expressly agrees to indemnify and hold harmless Rough Country, LLC for all claims resulting directly or indirectly from the purchase, ownership, or use of the items.

