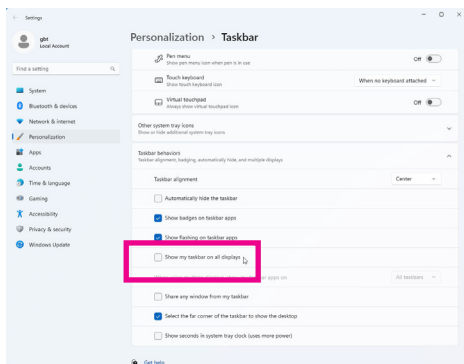


How to Install the AORUS Sensor Panel Skin?

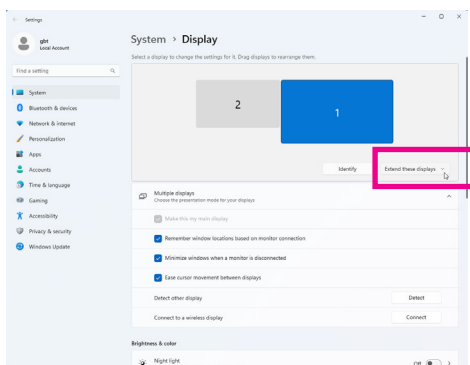
To use the AORUS sensor panel and display it on your secondary screen, follow the steps below to complete the required settings.

1 Set up the secondary display

Once you have connected the secondary screen, make sure to arrange your displays correctly. Right-click on the taskbar at the bottom of the screen and select **Taskbar Settings**. Under **Taskbar behaviors**, uncheck **Show my taskbar on all displays**.



Then, right-click on the desktop and select **Display settings**. Drag and drop each display to rearrange them according to their physical layout on your desktop. Make sure **Extend these displays** is selected.

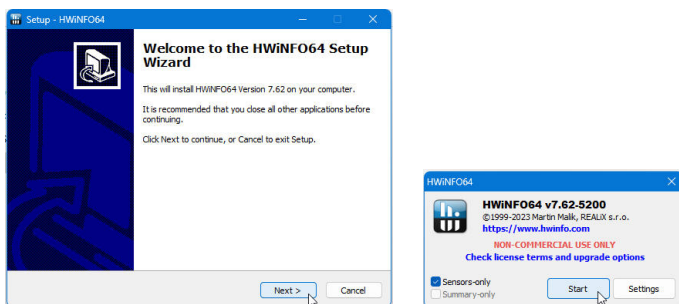


Tip: You can install a third-party app to lock the mouse to your primary screen.

2 Download, install, and tune HWiNFO, RTSS Rivatuner Statistics Server, and Rainmeter

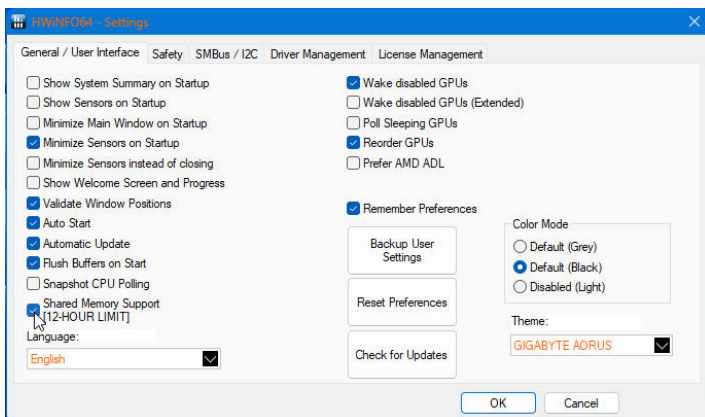
Before installing the AORUS Sensor Panel, install the three applications first. Visit the official websites of the three applications and download the latest version.

- **HWiNFO** (<https://www.hwinfo.com/>)

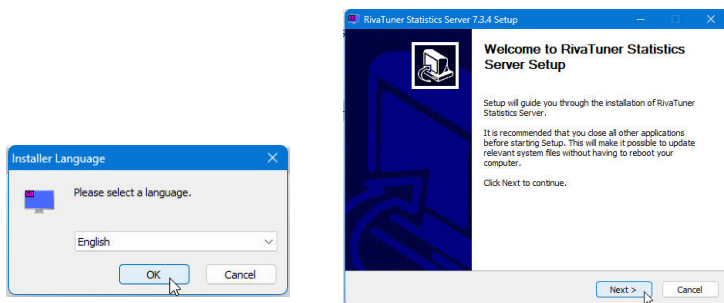


Configure HWiNFO64

Open the System tray on the taskbar corner, right-click on the "HWiNFO64" icon and then select **Settings**. Configure HWiNFO64 with the recommended options as shown. Note: You need to re-enable the **Shared Memory Support** option in HWiNFO64 every 12 hours or you can install HWiNFO64 Pro.

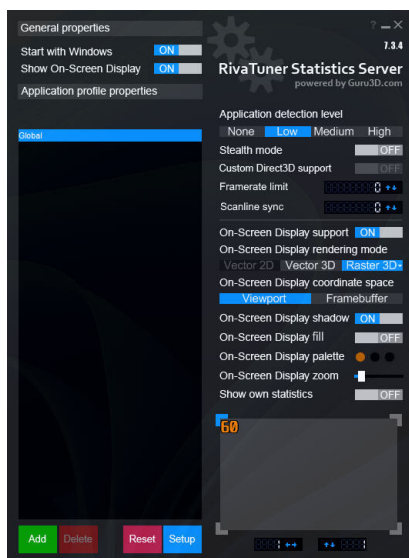


- **RTSS Rivatuner Statistics Server**

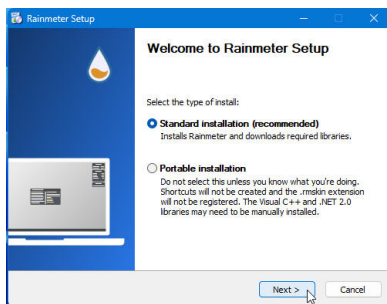
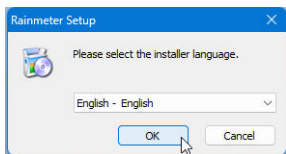


Configure RTSS Rivatuner Statistics Server

Open the System tray on the taskbar corner, right-click the "RivaTunerStatisticsServer" icon to display the main window. Check or uncheck the settings as shown below. (If you do not see the icon, launch the application from the Start menu first.)

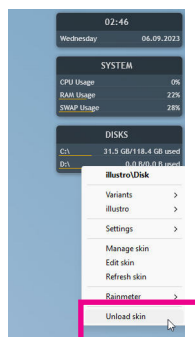
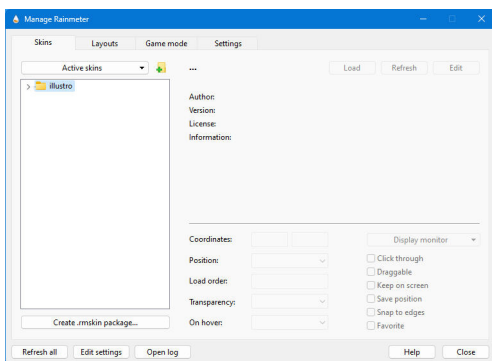


- **Rainmeter**



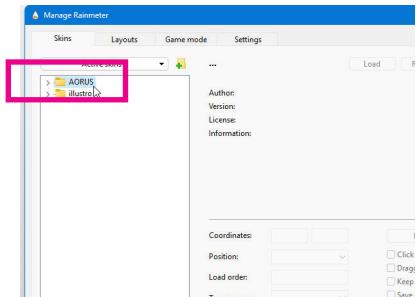
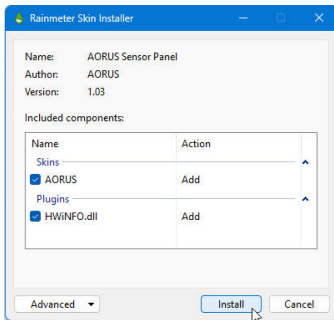
Configure Rainmeter

Open the System tray on the taskbar corner, right-click the "Rainmeter" icon to display the **Manage Rainmeter** window. Before you load the AORUS Sensor Panel skin, you can clear the default skins in the top-right corner. Unload the default skins by right-clicking on each of the windows and selecting **Unload skin**.



3 Download and install the AORUS Sensor Panel Skin

Visit the GIGABYTE website and download the AORUS Sensor Panel skin (<https://www.gigabyte.com/FileUpload/Global/KeyFeature/2496/innergigabyte/download/AORUS-Sensor-Panel-1.03.rmskin.zip>). Install the AORUS Sensor Panel and you will see the installed AORUS skin listed on the left-hand side panel of the **Manage Rainmeter** window.

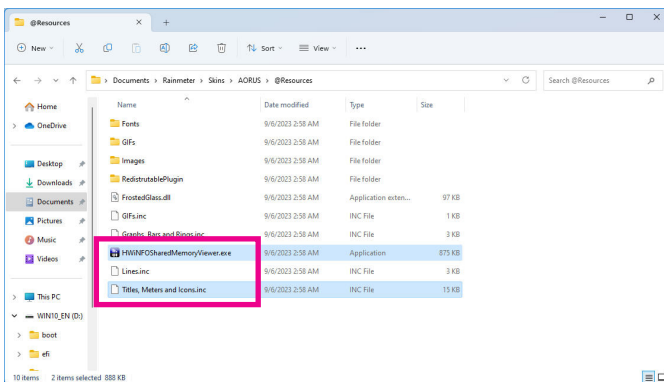


4 Load the AORUS Sensor Panel Skin on Rainmeter

To correctly display the AORUS Sensor Panel, be sure to do the following steps.

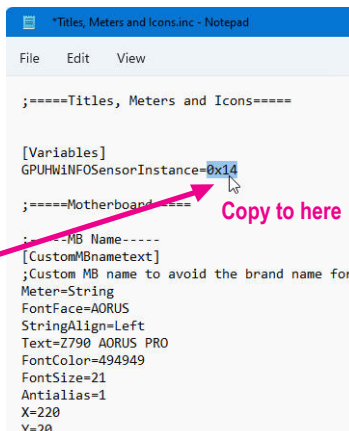
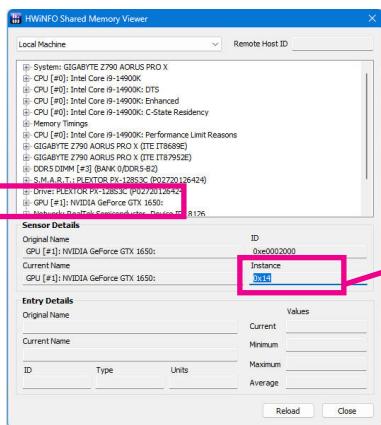
Step 1:

Open HWINFO64. Go to Documents\Rainmeter\Skins\AORUS\@Resources, launch **HWInfoSharedMemoryViewer.exe** and open the Notepad file named **Titles, Meters and Icons**.



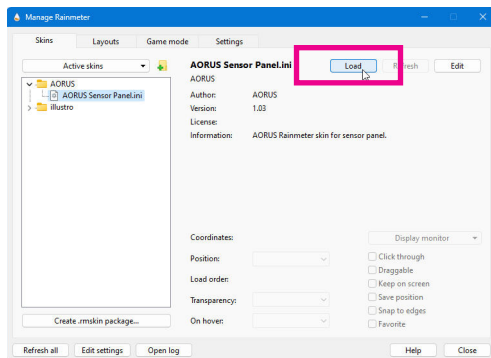
Step 2:

On the **HWINFO Shared Memory Viewer** window, look for and select the GPU sensor. Under the **Sensor Details** section, copy the ID in the **Instance** column and paste it to replace the original value in "GPUHWINFOSensorInstance" on the Notepad window. Save the changes to Notepad and close.



Step 3:

On the **Manage Rainmeter** window, double-click the AORUS skin folder to expand and select the ".ini" file. Click the **Load** button on the right to load AORUS Sensor Panel skin.



Step 4:

Once the AORUS Sensor Panel appears on the desktop, you can drag it to your secondary display.

