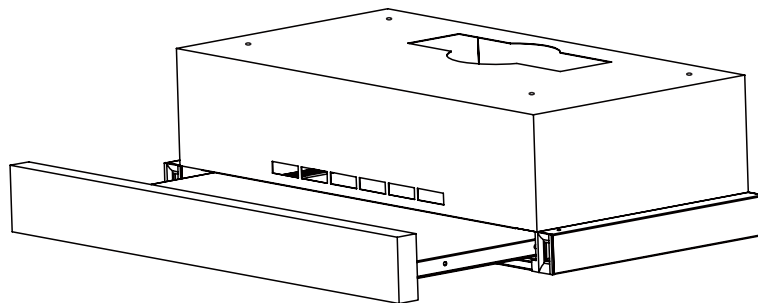




# Cooker Hood

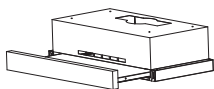
## Model FR60-2/FR90-2



Instruction manual

Version Number: V20201127

Cod:0103084591-00.04



## Information and advice

---

**Specifications: 220-240V ~ 50Hz**

In certain circumstances electrical appliance may be a danger hazard.

A) There shall be adequate ventilation of the room when the cooker hood is used at the same time as appliances burning gas or other fuels.

B) Do not check the status of the filters while the cooker hood is operating.

C) Do not touch the light bulb within half an hour after appliance use.

D) Do not flambe under the cooker hood.

E) Avoid opening gasometer when there is no pan on the stove, as it is damaging for the filters and a fire hazard.

F) Constantly check food frying to avoid that the overheated oil may become a fire hazard.

G) Disconnect the electrical plug prior to any maintenance.

H) Regulations concerning the discharge of air have to be fulfilled.

I) When the range hood and appliances supplied with energy other than electricity are simultaneously in operation.

The negative pressure in the room must not exceed 4 Pa ( $4 \times 10^{-5}$  bar)

J) This appliance is not intended for use by persons (including children) with reduced physical, sensory or mental capabilities, or lack of experience and knowledge, unless they have been given supervision or instruction concerning use of the appliance by a person responsible for their safety.

K) Children should be supervised to ensure that they do not play with the appliance.

L) The range hood is intended to be installed over a hob having no more than four hob elements.

M) Indoor use and household use only.

N) When the appliance is not in use and before cleaning, unplug the appliance from the outlet.

O) To protect against the risk of electrical shock, do not immerse the unit, cord or plug in water or other liquid.

P) CAUTION: Accessible parts may become hot when used with cooking appliances.

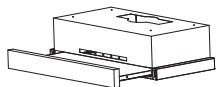
Q) If the supply cord is damaged, it must be replaced by the manufacturer, its service agent or similarly qualified persons in order to avoid a hazard.

R) There is a fire risk if cleaning is not carried out in accordance with the instructions.

S) The details concerning the method and frequency of cleaning.

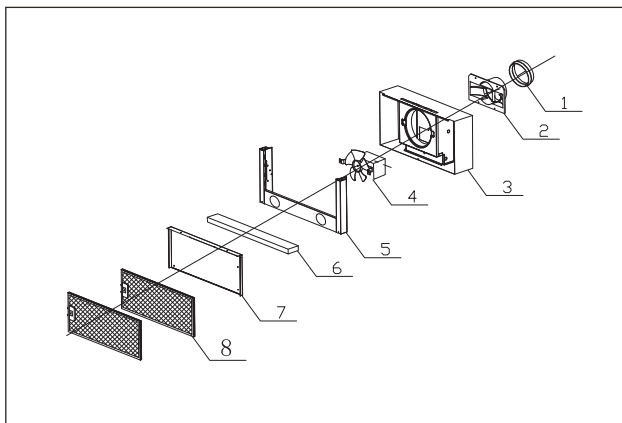
T) The air must not be discharged into a flue that is used for exhausting fumes from appliances burning gas or other fuels.

---



## Know your cooker hood

*Please read these instructions before using your cooker hood*

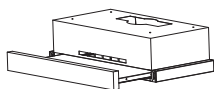


- |                                   |                       |
|-----------------------------------|-----------------------|
| 1. 120mm to 125mm ducting adaptor | 3. Main body assembly |
| 2. Outlet connection              | 4. Motor assembly     |
| 5. Outside frame                  | 6. Front panel        |
| 7. Telescopic board               | 8. Filter             |



### Information

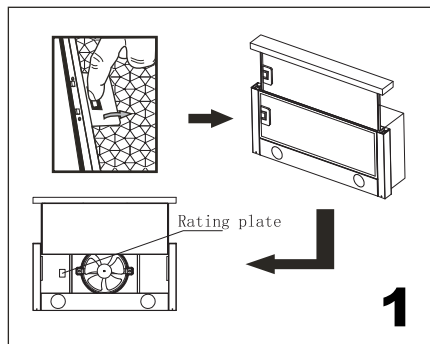
Congratulations on the purchase of our Cooker hood, which is designed to include many superior features that permit you the fullest expression of your living. Before installing and/or using the cooker hood carefully read all the instructions.



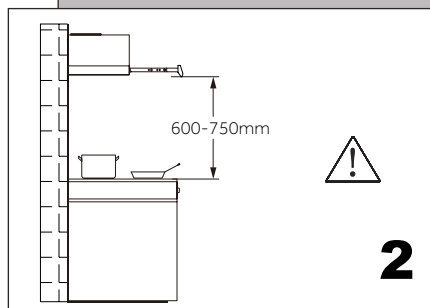
## Information and advice

---

**Specifications:** 220–240V ~ 50Hz



***Check the voltage and frequency given on the rating plate located on the inside of the hood.***

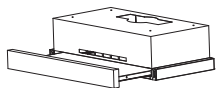


***Install the hood no less than 600mm and no more than 750mm above the cooking surface.***



### Information

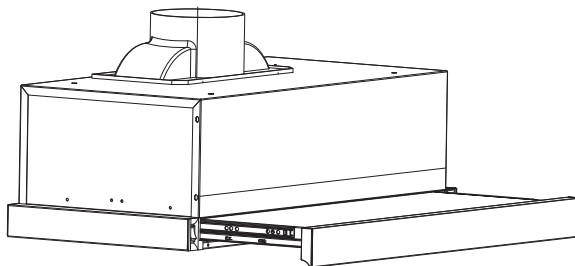
The air must not be discharged into a flue that is used for exhausting fumes from appliances burning gas or other fuels (not applicable to appliances that only discharge the air back into the room)



## Information and advice

---

**Specifications:** 220-240V ~ 50Hz



**3**

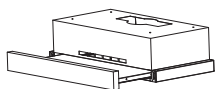
This hood can be used in either ducted or recirculating mode. It comes with a 40mm rail for use in the ducted mode. If you are using the hood in recirculating mode please remove the tape over the vent in the front of the unit .



### Information

**Before installation please decide if you will use the hood in ducted or recirculating mode.**

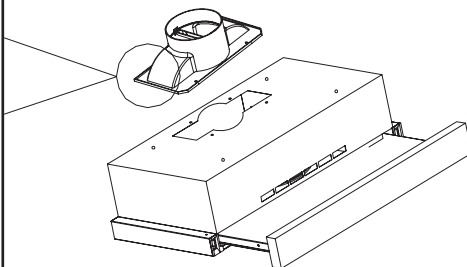
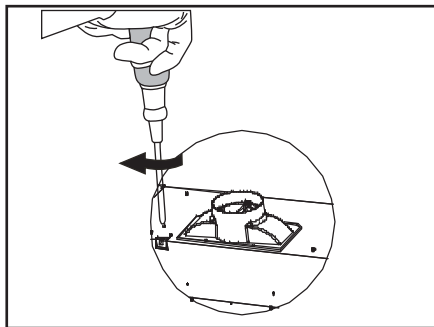
**Measure the dimensions of your cabinet and compare with the hood.**



## Installation

---

*Ensure the power has been turned off before beginning this installation.*



**4**

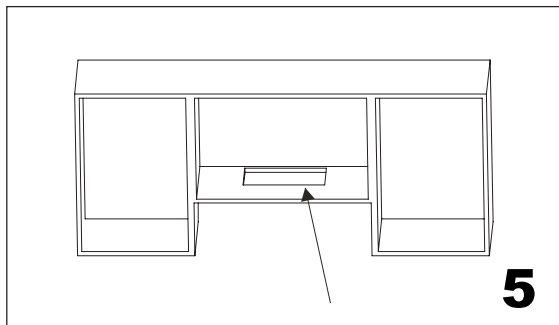


### Information

*Connect universal hose, easy selecting the venting direction*

If you are using a duct. Please first push out the duct hole and fix the damper flap on the air outlet of the hoods.

---

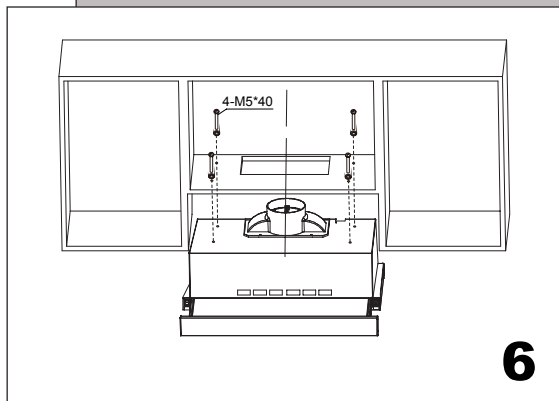


If you are installing the hood with a duct you will need to provide a hole for the duct. Please use the template provided to locate the hole.



Information

***When drilling into wall or ceiling, do not damage electrical wiring or other hidden utilities.***

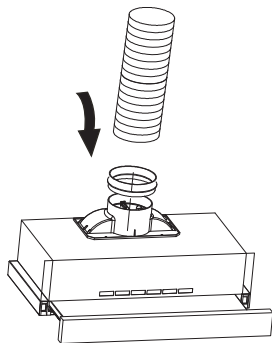


According to the Fig.4, make sure the position of the hoods on the cabinet. Then use the stencil to drill four  $\Phi 7$  holes on the cabinet. Fix four sets expanding plugs and screws aimed at the four holes.

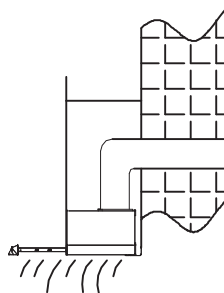
The best distance between the bottom of machine and the cabinet on two sides should be less than 2mm. You should make sure that there is no distance between the upside and the cabinet, the gap to the back should be not more than 10mm, the plug should be easy to touch, then it will be easy to be assembled.

---

The cooker hood is fully convertible for different venting options.



Connect the hose (not supplied) with the air duct. This hood comes with an adaptor to allow flexibility in duct sizes, but should not be less than 125 mm diameter.



Vertical flue is the most common method of installation. If your kitchen has an attic space above, the ducting may be run up through the cupboard and attic to a roof cap.



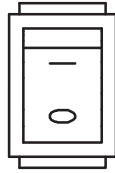
### Information

*The air must not be discharged into a flue that is used for exhausting fumes from appliances burning gas or other fuels.*

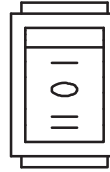


---

## Controls:



Lamp switch



Motor switch

9



### Information

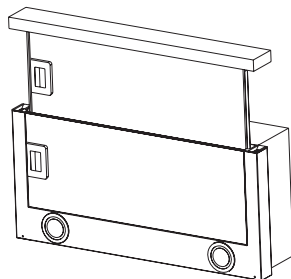
*Do not touch the light bulb within half an hour after appliance use.*

*The lamp shall not be covered with thermal insulation or other material.*

The hood is turned on when you pull out the slide. The lamp switch is located on the left side of the hood. The fan switch is located on the right side. The fan has 3 settings: off, low speed, high speed.

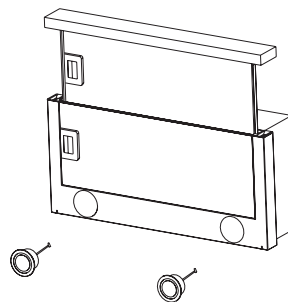
---

PIC-1



**10**

PIC-2



**11**



### Information

There is a fire risk if cleaning is not carried out in accordance with the instructions.

### Replacing Lamp:

1. Switch off the hoods and remove the plug;
2. Pull out the telescopic board, take off the lamp and remove the connection unit;
3. Replace new lamp, turning in a clockwise direction, fit the connection unit.
4. The lamps must be replaced by the manufacturer, its service agent or similarly qualified persons in order to avoid a hazard.

***\* The appliances is not intended for use by young children or infirm persons unless they have been adequately supervised by a responsible person to ensure that they can use the appliance safely.***

***\* Young children should be supervised to ensure that they do not play with the appliance.***

***The manufacturer shall decline all responsibility if the foregoing recommendations and instruction regarding installation, maintenance and use are not observed and respected when using the cooker hood.***

-----

