

# Ice crusher



Reference : DOM462  
Version : 1.4  
Language : English



## Instruction Manual

You have purchased a product LIVOO brand and we thank you. We take great care in design, ergonomics and ease of use of our products. We hope that this product will give you complete satisfaction.

This instruction manual is available too on our website [www.livoo.fr](http://www.livoo.fr)

### GENERAL INSTRUCTIONS

PLEASE, TAKE TIME TO READ WELL THE INSTRUCTIONS FOR USE PARTICULARLY BEFORE THE FIRST USE. A misuse of the appliance can damage it or hurt the user. Assure that you use the appliance for the use for which it is designed; we refuse any responsibilities as for the damages by an incorrect use or a bad manipulation.

1. Unplug the machine before fitting, removing, or cleaning parts.
2. Ensure the voltage is compliant with the voltage range stated on the rating label, and ensure the earthing of the socket is in good condition.
3. Never touch moving parts. Never stick your fingers or (kitchen) utensils in the input and output channels.
4. Appliances can be used by persons with reduced physical, sensory or mental capabilities or lack of experience and knowledge if they have been given supervision or instruction concerning use of the appliance in a safe way and if they understand the hazards involved.
5. This appliance shall not be used by children.
6. Children shall not play with the appliance.
7. Keep the appliance and its cord out of reach of children.

## Instruction Manual

8. Do not use the appliance close by flames, hot plates or stoves.
9. If the supply cord is damaged, it must be replaced by the manufacturer, its service agent or similarly qualified persons in order to avoid a hazard (\*).
10. To protect against the risk of fire, electric shock, or personal injury, do not place the cord, plug, or unit in water or other liquids.
11. Always disconnect the appliance from the supply if it is left unattended and before assembling, disassembling or cleaning.
12. Do not use outdoors.
13. Never leave the machine on unattended.
14. Do not let the power cable dangle over the edge of the table or the sink unit, and never allow the cable to come into contact with a hot surface.
15. Before using the appliance, always check that there are no foreign objects in the ice reservoir.
16. It is absolutely necessary to keep this appliance clean at all times as it comes into direct contact with food.
17. Regarding the instructions for cleaning surfaces in contact with food or oil, thanks to refer to the below paragraph "cleaning" in manual.
18. Never clean with scouring powders or hard implements.
19. The appliance is not intended to be operated by means of external timer or separate remote control system.

## Instruction Manual

20. Do not use the accessories which are not recommended by manufacturer.
21. Metal sheet or other electric objects are not allowed to be inserted into the appliance to avoid fire and short circuit.
22. Accessories, other than those supplied with the appliance, include instructions for their safe use.
23. Switch off the appliance and disconnect from supply before changing accessories or approaching parts that move in use.
24. Regarding the instructions for the use of accessories, operation times and speed settings, thanks to refer to the below paragraphs.
25. There is potential injury from misuse.
26. Be careful when handing the sharp cutting blades, emptying the bowl and during cleaning.
27. This appliance is intended to be used in household and similar applications such as:
  - . staff kitchen areas in shops, offices and other working environments
  - . farm houses and by clients in hotels, motels and other residential type environments
  - . bed and breakfast type environments

(\*) Competent qualified electrician: after sales department of the producer or importer or any person who is qualified, approved and competent to perform this kind of repairs in order to avoid all danger. In any case you should return the appliance to this electrician.

# Instruction Manual

## SPECIFICATIONS

Operating voltage: AC 220-240V 50-60Hz

Power: 30 W

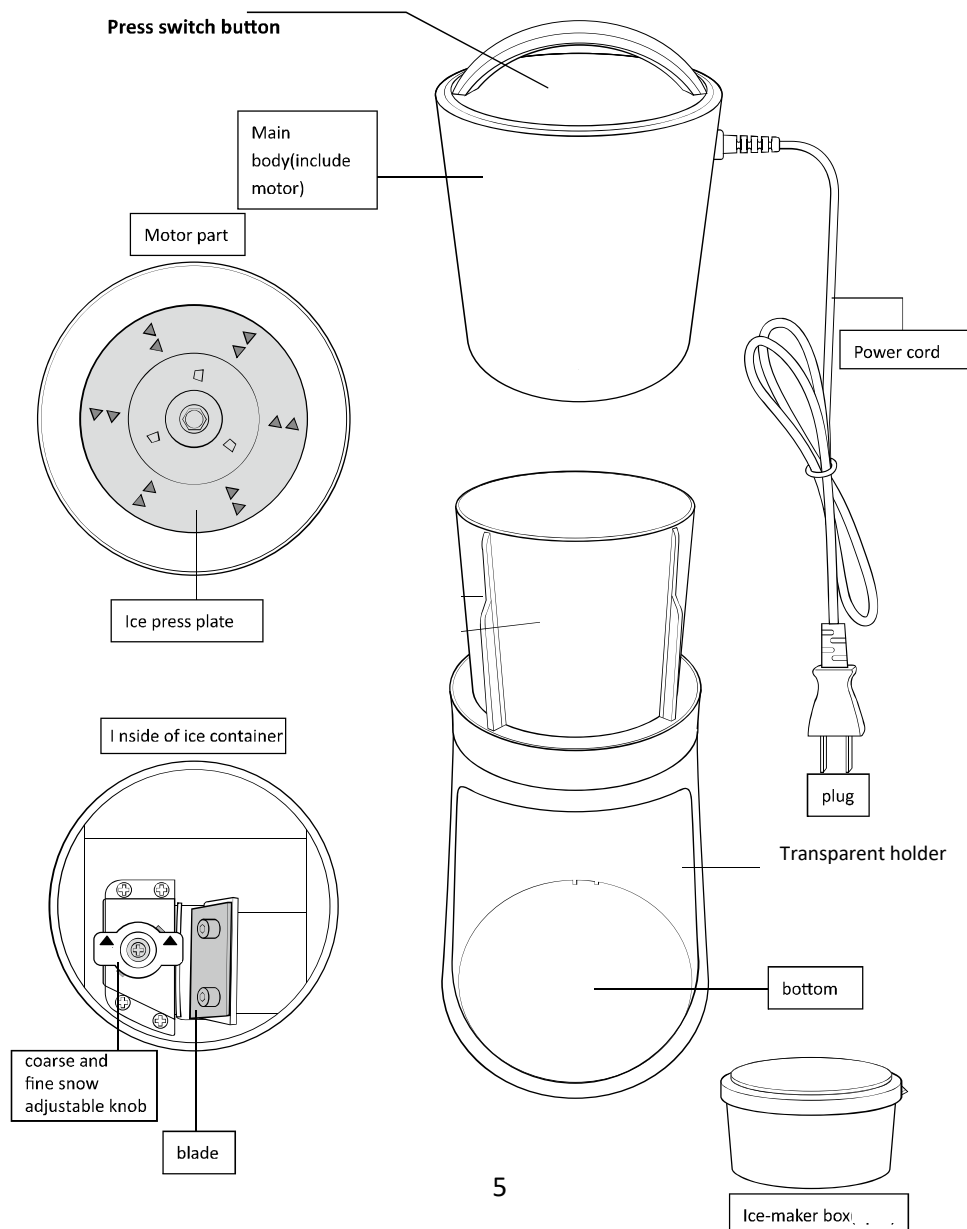
Capacity: 150 ml

Operating time : for 20mm square ice cubes frozen at -18°C, at two thirds of the bowl capacity

- 1 minute ON
- 3 minutes OFF
- maximum 5 times

## DESCRIPTION

### Components & assembling method



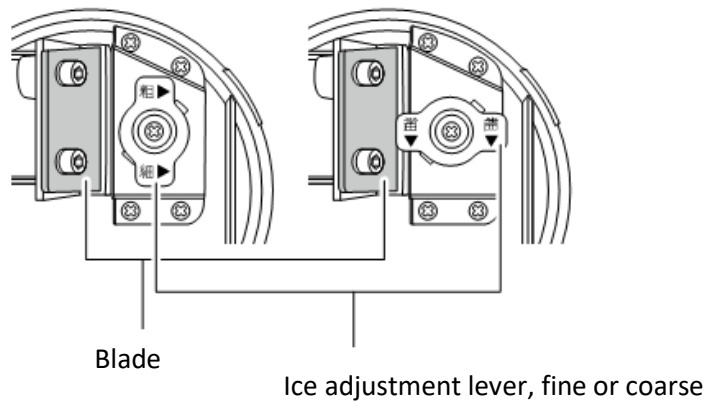
## Instruction Manual

Before you can make crushed ice, plan to have ice cubes available to crush. Fill the ice container with water and place it in the freezer for 10 hours.

You can also use ice cubes prepared in bags specifically for this purpose. When filling the ice container, always use the ice maker box only, both for ice cubes prepared from bags and for ice prepared directly in the container.

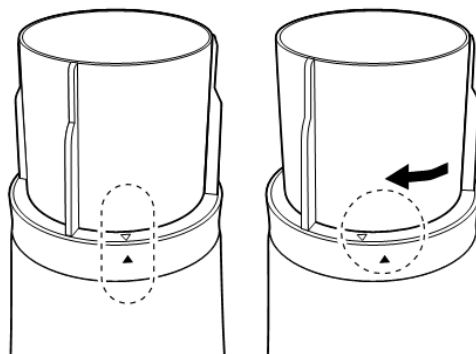
### Assembly

- At the bottom of the ice tank you will find a lever to adjust your slush machine.



**Warning: Do not touch the blade with your fingers as this may cause injury.**

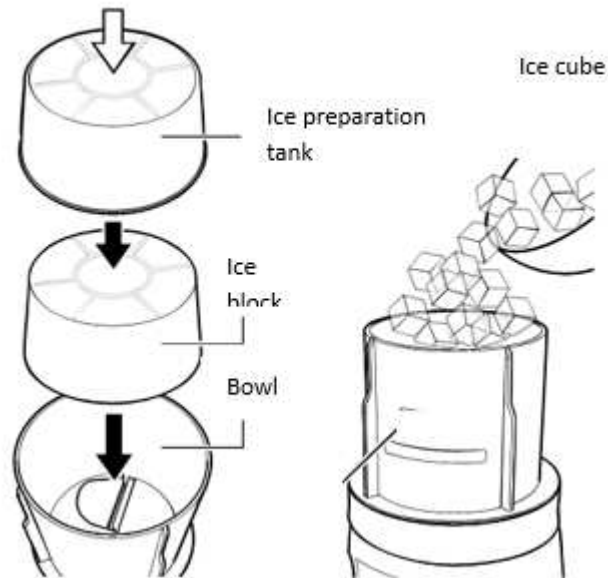
- Place your machine on a flat, stable surface.
- Assemble the ice tank and the clear stand as shown in the picture below.
- Be sure to align the arrows as shown below.



- Take the ice preparation tank out of the freezer, then open the top cover and turn it upside down. Press down on the center and pull out the ice as shown below.
- Place it in the bowl of your appliance with the flat surface of the ice block facing down.
- If it is difficult to take out the ice from the ice preparation tank, please warm it up by partially soaking it in hot water. This will separate the ice from the tank.

## Instruction Manual

Press on the ice tank



Press on the ice tank

- Place the motor block on the bowl filled with ice, do not force it if the motor block lifts a little due to the amount of ice.
- Plug in the machine.
- Push with the handle. If you let go, the machine will stop automatically.

## CLEANING AND STORAGE

1. Do not use agents of cleaning abrasive as a scouring pad, acetone, alcohol, etc. for the cleaning.
2. Switch off the appliance, unplug it.
3. Clean the ice shaving chamber, the bowl \ Bowl soapy water.

**Warning : Be careful when handling the motor block cutting plate and the bowl blade.**

4. Wipe the appliance surface with soft damp cloth
5. Never put in dishwasher



**Correct disposal of the unit  
(Electrical and Electronic Equipment)**

(Applicable in the European Union and the rest of Europe that have adopted separate collection systems countries)

## Instruction Manual

The European Directive 2012/19/EU on Waste Electrical and Electronic Equipment (WEEE), requires that old household electrical appliances must not be disposed of in the normal household waste stream. Old appliances must be collected separately in order to optimize the recovery and recycling of the materials they contain and reduce the impact on human health and the environment. The symbol of the crossed out dustbin is marked on all products to remind the obligations of separate collection. Consumers should contact their local authority or retailer for information concerning the correct disposal of their product.



Pour en savoir plus :  
[www.quefairedemesdechets.fr](http://www.quefairedemesdechets.fr)

**LIVOO**

BP 61071

67452 Mundolsheim - FRANCE

- Non contractual illustration
- Product information is subject to change without prior notice.