

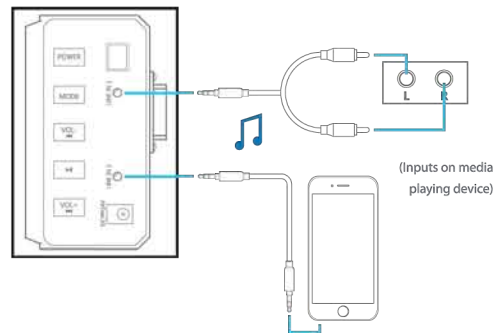
7 Using the Inputs

LINE Inputs

To use the LINE inputs, insert the 3.5mm end of either of the supplied audio cables (3.5mm or RCA - 3.5mm) to one of the LINE IN input jacks on the side of the sound bar.

Attach the other end of the audio cable to the 3.5mm jack or RCA input jack on your media playing device.

The soundbar will automatically switch to the LINE IN input and if using LINE IN 1, the LED indicator will turn **BLUE**, if using the LINE IN 2, the LED indicator will turn **GREEN**.



Optical Input

To use the optical input, plug one connector of an optical cable into the Optical Input Jack, then plug the other connector into the Optical Jack on your media-playing device.

To switch inputs, press the **[MODE]** button on the side of the sound bar or on the remote control.

8 Legal Information

READ CAREFULLY AND KEEP THIS MANUAL

Note: This equipment has been tested and found to comply with the limits for a Class B digital device, pursuant to part 15 of the FCC Rules. These limits are designed to provide reasonable protection against harmful interference in a residential installation.

This equipment generates, uses and can radiate radio frequency energy and, if not installed and used in accordance with the instructions, may cause harmful interference to radio communications. However, there is no guarantee that interference will not occur in a particular installation. If this equipment does cause harmful interference to radio or television reception, which can be determined by turning the equipment off and on, the user is encouraged to try to correct the interference by one or more of the following measures:

- Reorient or relocate the receiving antenna.
- Increase the separation between the equipment and receiver.
- Connect the equipment into an outlet on a circuit different from that to which the receiver is connected.
- Consult the dealer or an experienced radio/TV technician for help.

Caution: Any changes or modifications not expressly approved could void the user's authority to operate the equipment.

This device complies with Part 15 of the FCC Rules. Operation is subject to the following two conditions: (1) This device may not cause harmful interference, and (2) this device must accept any interference received, including interference that may cause undesired operation.

The device has been evaluated to meet general RF exposure requirement. The device can be used in portable exposure condition without restriction.

WARNING Rain/Moisture

- Do not expose the unit to extreme temperatures (heat or cold), open flames, humid conditions, or wet conditions.
- Do not submerge in water.
- Do not open this product or attempt to repair the unit yourself should it not be working.

9 Limited Warranty

90 Days Limited Warranty

In the unlikely event that this product is defective, or does not perform properly, you may within ninety (90) days from your original date of purchase return it to the authorized service center for repair or exchange.

TO OBTAIN WARRANTY SERVICE:

- Call the Customer Support number located below, or go to our website portal to receive an SRO number.
- Provide proof of the date of purchase within the package (dated bill of sale).
- Prepay all shipping costs to the authorized service center, and remember to insure your return.
- Include a return shipping address (no P.O. Boxes), a telephone contact number, and the defective unit within the package.
- Describe the defect or reason you are returning the product.

Your product will be repaired or replaced, at our option, for the same or similar model of equal value if examination by the service center determines this product is defective. Products received damaged as a result of shipping will require you to file a claim with the carrier.

The shipping address of the authorized service center is:

Customer Service Dept. 36
c/o Southern Telecom
400 Kennedy Drive
Sayreville NJ 08872

Should you have any questions or problems concerning this product, please contact our customer service department at:

Customer Support:
Phone: 1-877-768-8481
Monday - Friday 8AM - 10PM (EST)

www.southerntelecom.com
Click on **Product Support**

10 Limited Warranty (cont'd)

Warranty service not provided

This warranty does not cover damage resulting from accident, misuse, abuse, improper installation or operation, lack of reasonable care, and unauthorized modification. This warranty is voided in the event any unauthorized person opens, alters or repairs this product. All products being returned to the authorized service center for repair must be suitably packaged.

Limitation of Warranty:

- THE WARRANTY STATED ABOVE IS THE ONLY WARRANTY APPLICABLE TO THIS PRODUCT. ALL OTHER WARRANTIES, EXPRESS OR IMPLIED (INCLUDING ALL IMPLIED WARRANTIES OF MERCHANTABILITY OR FITNESS FOR A PARTICULAR PURPOSE) ARE HEREBY DISCLAIMED. NO VERBAL OR WRITTEN INFORMATION GIVEN BY AIT, INC. ITS AGENTS, OR EMPLOYEES SHALL CREATE A GUARANTY OR IN ANY WAY INCREASE THE SCOPE OF THIS WARRANTY.
- REPAIR OR REPLACEMENT AS PROVIDED UNDER THIS WARRANTY IS THE EXCLUSIVE REMEDY OF THE CONSUMER. AIT, INC. SHALL NOT BE LIABLE FOR INCIDENTAL OR CONSEQUENTIAL DAMAGES RESULTING FROM THE USE OF THIS PRODUCT OR ARISING OUT OF ANY BREACH OF ANY EXPRESS OR IMPLIED WARRANTY ON THIS PRODUCT. THIS DISCLAIMER OF WARRANTIES AND LIMITED WARRANTY ARE GOVERNED BY THE LAWS OF THE STATE OF NEW YORK. EXCEPT TO THE EXTENT PROHIBITED BY APPLICABLE LAW, ANY IMPLIED WARRANTY OF MERCHANTABILITY OR FITNESS FOR A PARTICULAR PURPOSE ON THIS PRODUCT IS LIMITED TO THE APPLICABLE WARRANTY PERIOD SET FORTH ABOVE.

Some states do not allow the exclusion nor limitation of incidental or consequential damages, or limitations on how long an implied warranty lasts so the above limitations on exclusions may not apply to you. This warranty gives you specific legal rights, and you also may have other rights that vary from state to state.



Wireless Sound Bar

WST2014



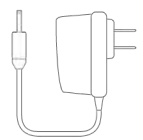
Printed in China
v1.2017-08

• If you have any questions, call 1-877-768-8481 •
• www.SouthernTelecom.com and click on Product Support •

1 In the Box



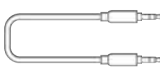
Sound Bar



DC 14V
Power Adapter



Remote Control



3.5mm
Auxiliary Cable

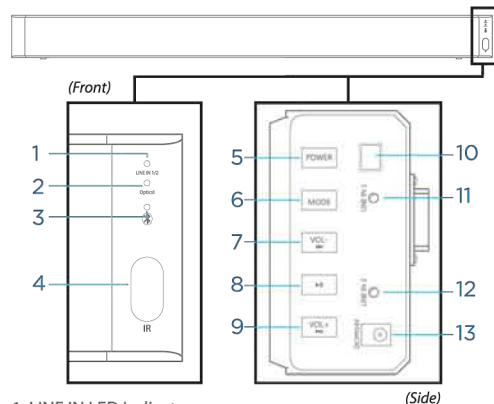


RCA - 3.5mm
Auxiliary Cable



Mounting
Screws (x2)

2 Location of Controls



1. LINE IN LED Indicator
2. Optical Input LED Indicator
3. Bluetooth Indicator
4. Infrared Receiver Panel
5. **[POWER]** Button:
Quick Press - Power ON/OFF
6. **[MODE]** Button:
Quick Press - Change input mode
7. **[VOL-] [SKIP]** Button:
Quick Press - Skip to previous track
Long Press - Decrease volume
8. **[PAUSE]** Button: Play/pause media playback
9. **[VOL+] [SKIP]** Button:
Quick Press - Skip to next track
Long Press - Increase volume
10. Optical Input Port
11. LINE IN 1 Jack (3.5mm AUX)
12. LINE IN 2 Jack (3.5mm AUX)
13. DC 14V Power Jack

3 Setting up the Speaker

Powering the Sound Bar

Attach the pin of the supplied power adapter to the DC 14V power jack on the sound bar. Plug the adapter into a working wall outlet.

Mounting the Speaker

1. Measure a width of 31.8175 inches on the wall and mark the position of the mounting screws on the wall using a pencil.
2. Drill the mounting screws directly into the pencil-marked locations. Allow the screws to protrude approximately 0.3 inches out of the wall so you can easily hook the soundbar onto them.
3. Place and slide the sound bar onto the mounting screws. Carefully make sure it is firm and stable.

Replacing the Remote Control Battery

To replace or install the battery, push and slide the battery door out from the remote control. Replace the battery with a new CR2025 battery with the positive (+) polarity facing up.



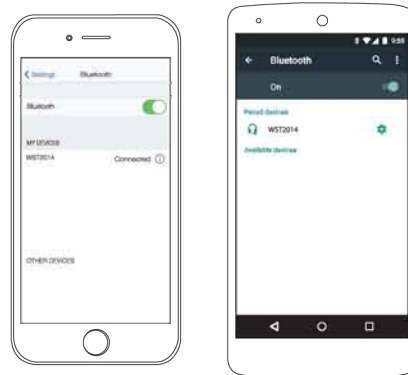
NOTE: When using for the first time, gently pull the protection tab extending out of the remote control's battery door.

4 Pairing the Speaker

1. Power the sound bar ON and quick press the **[MODE]** button to switch to Bluetooth input. The Bluetooth LED indicator will quickly flash **GREEN**.
2. Set your mobile device to search for Bluetooth devices. When your mobile device finds the sound bar, select **WST2014** from the list of found devices.
3. After a successful pairing, a tone will be heard and the Bluetooth LED indicator will slowly flash **GREEN**.

On an iPhone or Android Device

• Go to **SETTINGS -> BLUETOOTH**



The screenshots above are typical of many Bluetooth-enabled devices in the market today, and are used to assist in the explanation of the pairing process. Your Bluetooth-enabled device's interface and interaction with the Bluetooth speaker may differ slightly from the illustrations above.

To maintain the Bluetooth connection, keep your Bluetooth-enabled device within 30 feet of the speaker.

5 Using the Speaker

NOTE: Please go through the Setting Up the Speaker section of this user guide.

Powering ON/OFF

- Quick press the **[POWER]** button on the side of the sound bar to turn ON/OFF.
- Press the **[ON]** button to put the sound bar in standby mode.

Adjusting Volume

- Long press the **[VOL-] [SKIP]** (decrease) and **[VOL+] [SKIP]** buttons on the side of the sound bar to adjust volume or use the **[--]** and **[+]** buttons on the remote control.
- Press the **[MUTE]** button on the remote control to mute/unmute volume.

Changing Modes

The sound bar can switch between Bluetooth, two LINE inputs, and an Optical input mode. Once the sound bar is paired to a Bluetooth device and an AUX-in jack is wired to a media-playing device, quick press the **[MODE]** button to switch between these inputs.

NOTE: For further info on pairing Bluetooth devices to the sound bar see the **Pairing the Speaker** section of this user guide. For further info on using different inputs, see the **Using the Inputs** section of the user guide.

Playing Music

To enjoy music wirelessly on your sound bar, make sure that the sound bar is properly paired to your mobile device. If you are pairing the device for the first time, please consult the **Pairing the Speaker** section of this user guide.

Playing/Pausing Music

- Press the **[PAUSE]** button on the side of the sound bar or on the remote control to play/pause media playback.

6 Using the Speaker (cont'd)

Skipping Tracks

- Quick press the **[VOL-] [SKIP]** button on the speaker or the **[--]** button on the remote control to skip to the **next** track.
- Quick press the **[VOL+] [SKIP]** button on the speaker or the **[+]** button on the remote control to skip to the **previous** track.

Using the Remote Control

The remote control allows full control of music playback and volume adjustment.

- **[ON]** Button: Enter/leave standby
- **[MODE]** Button: Change input mode
- **[MUTE]** Button: Mute/unmute volume
- **[SKIP-]** Button: Skip to previous track
- **[PAUSE]** Button: Play/pause music
- **[SKIP+]** Button: Skip to next track
- **[RESET]** Button: Reset to factory settings
- **[--] / [+]** Buttons: Adjust volume



NOTE: If the speaker is not responding to the remote's button presses, the batteries may need to be changed. See the **Replacing the Remote Control Battery** section, earlier in this user manual.

Please consult the **Replacing the Remote Control Battery** section under the **Setting up the Speaker** section of this user guide for further info on setting up the remote control.

NOTE: When using the remote control, for best results point directly at the infrared receiver panel on the front corner of the sound bar.