

DENON®

DCD-3000NE

Super Audio CD Player

Quick Start Guide

Before you begin

What's in the box

Quick Start Guide



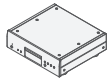
Safety Instructions



Warranty
(for North America
model only)



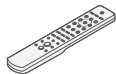
CD player



Power cord



Remote control
(RC-1207)



2×R03/AAA batteries



Audio cable



Required for setup

Amplifier



Speakers



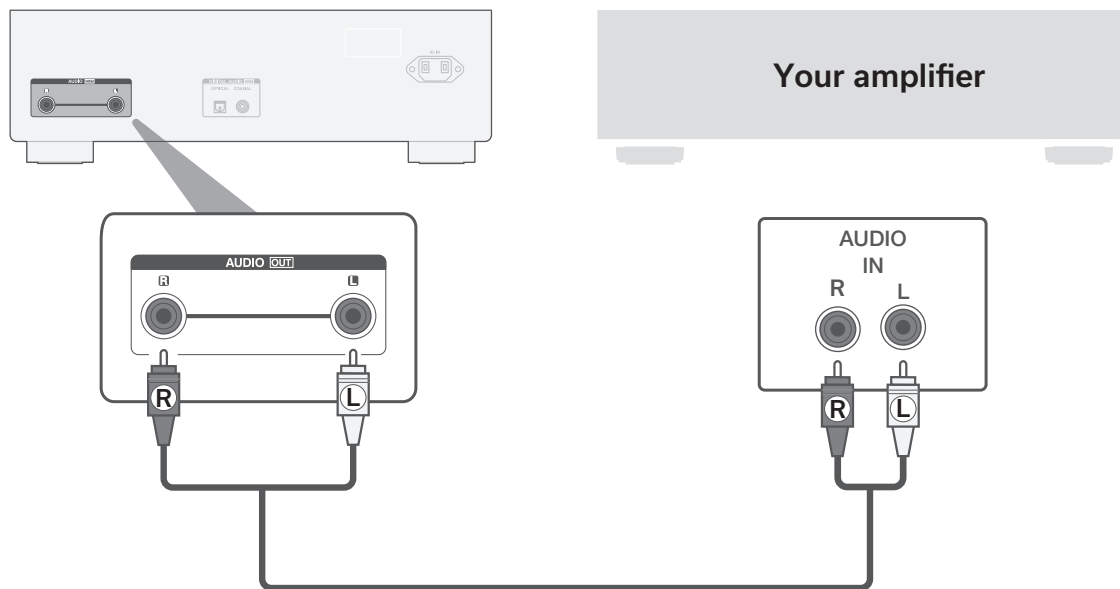
Speaker cables



Setup

1

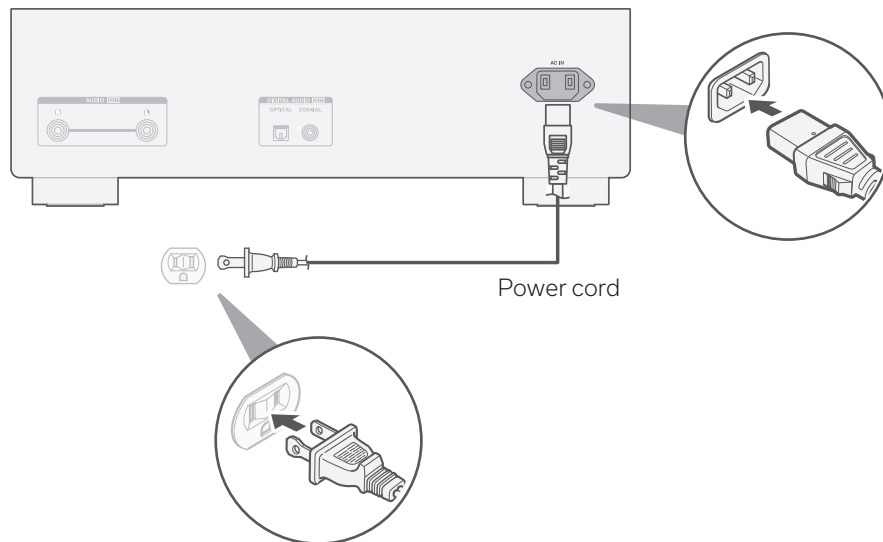
Connect DCD-3000NE to the amplifier



2

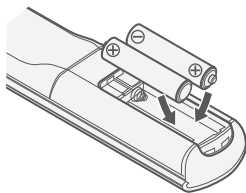
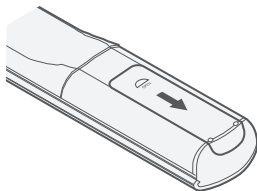
Connect to power

Connect the power cord between the DCD-3000NE and a wall outlet.



3

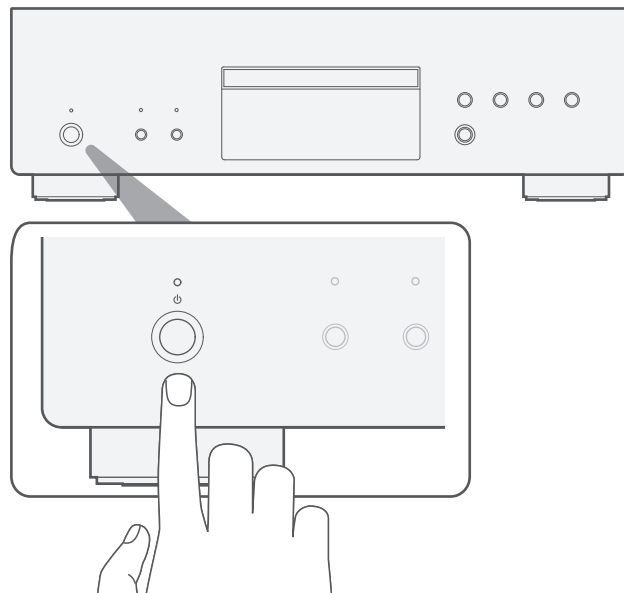
Install batteries in the remote control



- Batteries can be taken out in reversed order.

4

Turn the DCD-3000NE's power on



EN

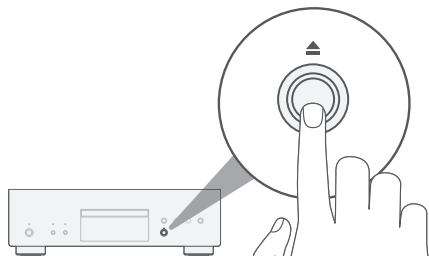
FR

ES

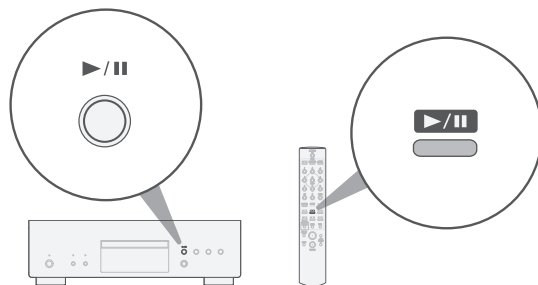
5

Begin CD or Super Audio CD playback

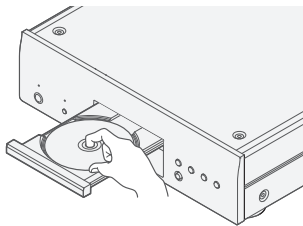
- 1** Press ▲ to open the disc tray.



- 3** Press ►/|| .
Playback starts.



- 2** Place CD in the disc tray.



Owner's manual

Refer to the online manual for other functions, information and operation procedure details.

manuals.denon.com/DCD3000NE/NA/EN/



DENON®

www.denon.com

Printed in Japan 5411 12134 00AS
© 2024 Masimo. All Rights Reserved.