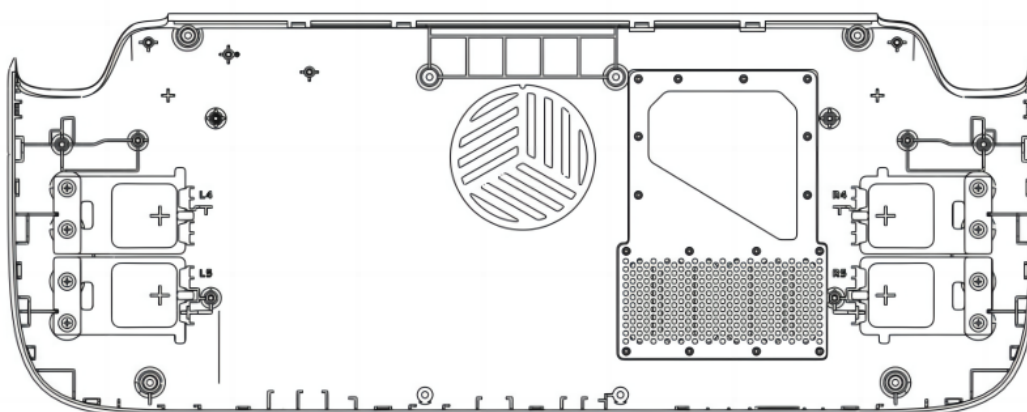


PC0106



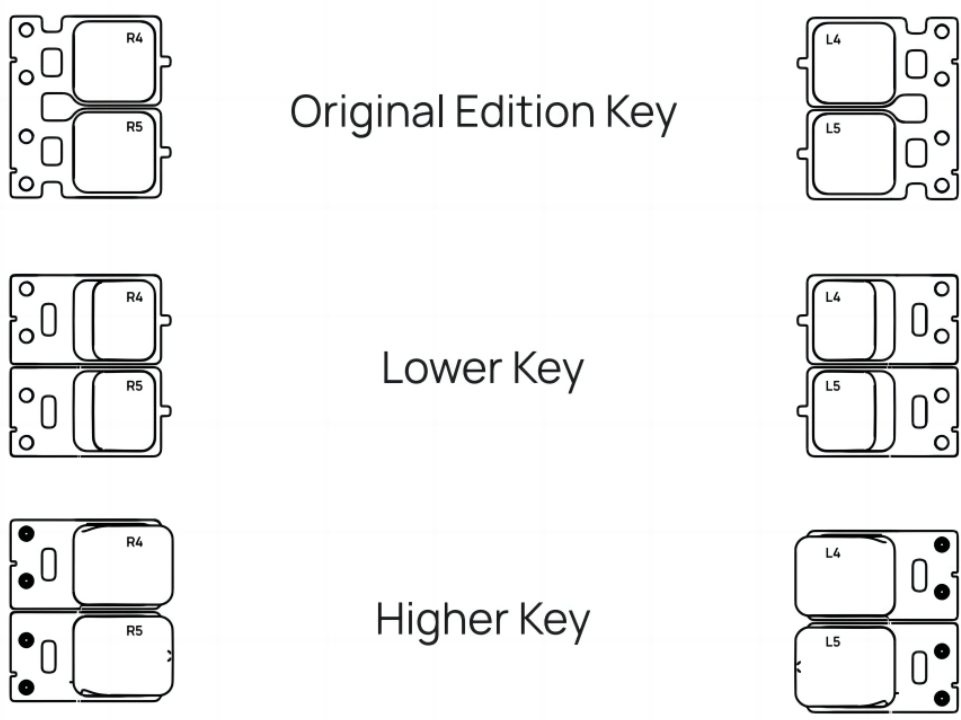
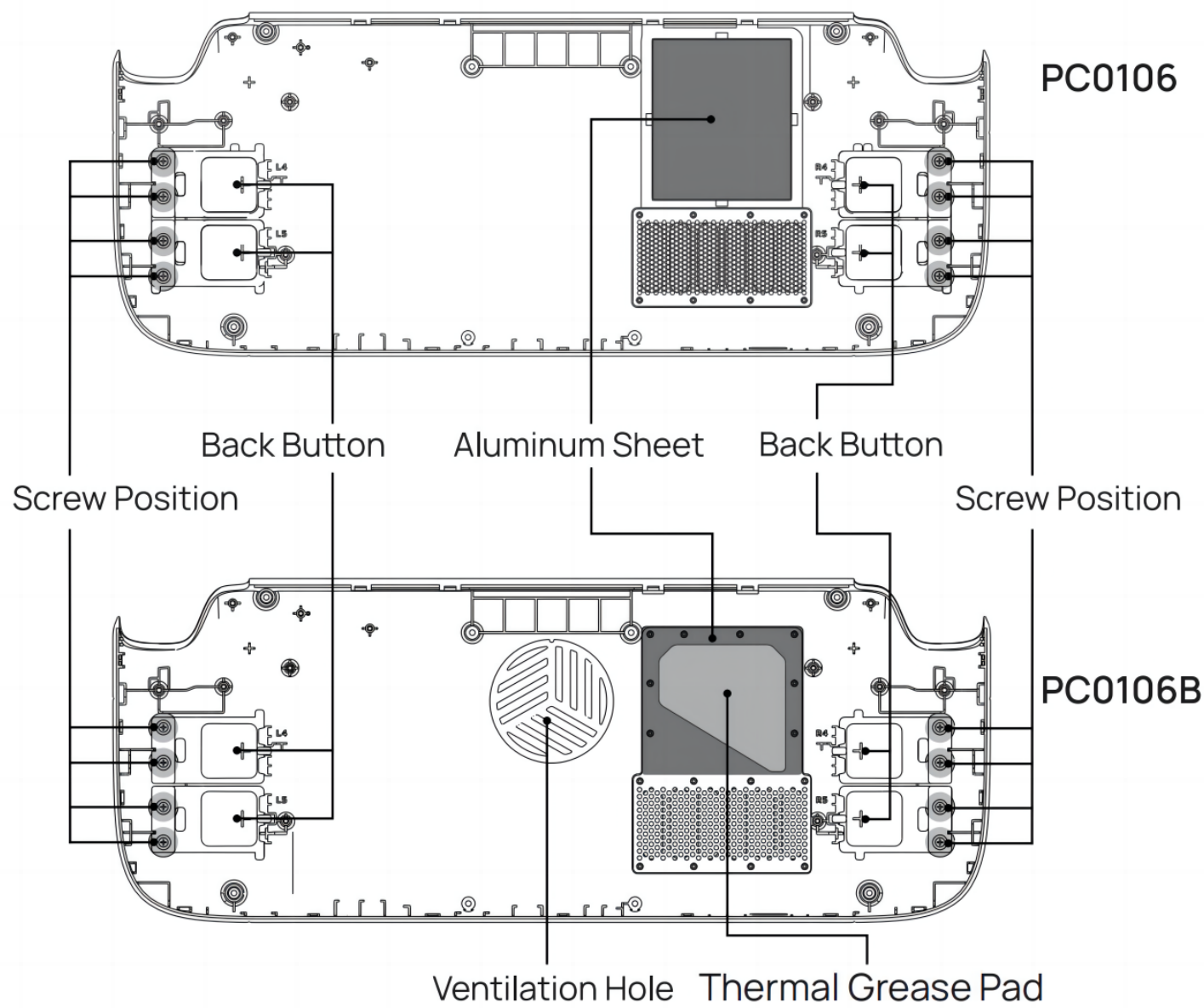
PC0106B

---

**TRANSPARENT BACK PLATE for Steam Deck**



# Product Overview



# Attention

- ⚠ Regarding the changes in the maintenance policy of the whole machine caused by teardown, please refer to the official information provided by VALVE.
- ⚠ As an extra precaution, Valve recommends putting your Steam Deck into battery storage mode within the BIOS before starting any internal repairs.
- ⚠ If you have a microSD card installed, make sure to remove it before opening the Steam Deck.
- ⚠ To minimize risk of damage, turn on your Steam Deck and allow the battery to discharge below 25% before starting your repairs. A charged lithium-ion battery can be very dangerous if accidentally punctured.
- ⚠ Before you begin, completely power down and unplug all cables from your Steam Deck. Remember to follow general electrostatic discharge (ESD) safety procedures while repairing the device.
- ⚠ Throughout this repair, keep track of each screw and make sure it goes back exactly where it came from to avoid damaging your Steam Deck.
- ⚠ For more detailed teardown tutorials, please refer to iFixit.

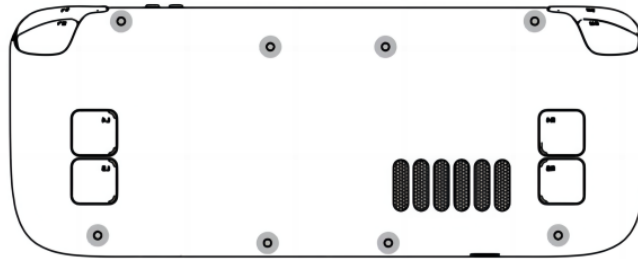
## Installation

### 1. Select the Button

We have included three keys with different heights and feel, you can use screws to fix them on the back cover, fully feel the difference in feel and choose the most suitable height for you;

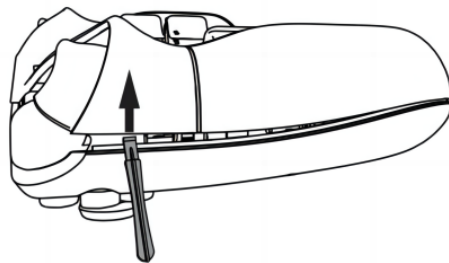
## 2. Remove the back cover screws

Use a Phillips driver to remove the eight screws securing the back cover.



## 3. Unclip the back cover

Insert an opening pick into the thin gap between the back cover and the front shell, along the edge of the right grip.

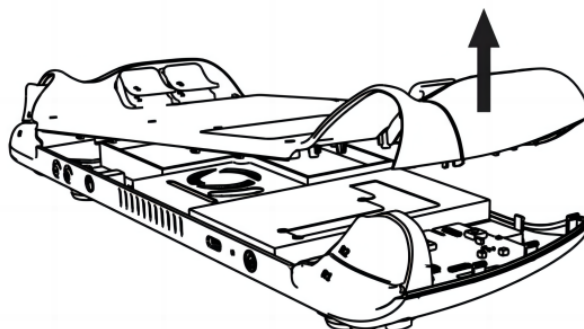


Insert the triangular pry tool into the gap opened by the pry bar, slide it around the edge of the faceplate and bottom shell until the bottom shell is fully opened.



## 4. Remove the back cover

Grip the back cover at the opening you just created and pull it up and away from the device to unclip the long edges.





## 5. Install new back cover

Remove the clear plastic film on the surface of the cooling silicone grease sheet, align the new back cover with the back button installed on the machine buckle, press to make the buckle close, and then screw back the screw on the back of the machine in the order of disassembly.

## Parameters

### PC0106

Brand: JSAUX

Product Model: PC0106B

Product Name: TRANSPARENT BACK PLATE for Steam Deck

Product Material: PC+Aluminium Alloy

Product Size: About 150(L) ×117(W) ×32 (H)mm

Product Weight: About 126 g

### PC0106B

Brand: JSAUX

Product Model: PC0106B

Product Name: TRANSPARENT BACK PLATE for Steam Deck

Product Material: PC+Aluminium Alloy

Product Size: About 150(L) ×117(W) ×32 (H)mm

Product Weight: About 105 g

## Packing Accessories

(×1) TRANSPARENT BACK PLATE for Steam Deck

(×2) Original Edition Key

(×1) Disassembly crowbar

(×4) Lower Key

(×1) triangular pry tool

(×4) Higher Key

(×10) Back cover screw

(×1) Screwdriver

(×16) Button screw

(×10) Anti-static finger cot

Thank you for choosing JSAUX.

JSAUX is a consumer electronics brand specializing in the manufacturing of accessories for computers, TVs, smartphones, tablets and handhelds. In line with our core value of leveling up everyone's digital life, our company aims to develop convenient and innovative products that help everyone make the most of their devices – always at a reasonable price. These values also reflect on our way to do business, always producing gadgets and accessories of reliable quality in diverse 3C categories.

Feel free to contact us at [official@jsaux.com](mailto:official@jsaux.com) if you have any further questions on our products, or their manufacturing process. We're looking forward to meeting you!

Website: [www.jsaux.com](http://www.jsaux.com)

Instagram: [@jsaux\\_official](https://www.instagram.com/jsaux_official)

Facebook: [@jsaux.fans](https://www.facebook.com/jsaux.fans)

Twitter: [@jsauxofficial](https://twitter.com/jsauxofficial)

Shenzhen Wuyishi Technology Co., Ltd

Add: Room 501-505, Building B ,No.17 Yongxiang East Road, Ma'antang

Community, Bantian Street, Longgang District, Shenzhen, Guangdong, China