

G10

USER MANUAL



Portable Audio Mixer For Live Streaming, Podcast
or Recording On Computer & Mobile Devices

Introduction

Thank you for choosing G10 MIXER! The G10 MIXER is an easy-to-use, all-in-one, onboard audio solution for live streaming, podcast recording, broadcasting, gaming and other content creations.

Streamline your setup and optimize your production with G10 MIXER. It features a 4.5" HD screen, 2 large rotary knobs, 4 sliding faders, 9 knobs, and 26 keys. Intuitive & visualized to control & optimize your audio mixing, no need fiddly software and complex settings. It is an audio console with hardware-controlled adjustment to all of audio effortlessly for perfect mixing.

Features 13 audio jacks, provides enough channels to accommodate your home devices. Built-in a XLR(3-pin), 1/4", 1/8", etc. microphone jacks, allows you use your different type microphone, and a 1/4" TRRS headset mic. Moreover, Built-in one USB-C digital jack for digital connection with PC or mobile devices, and two 1/4" TRRS analog jacks for analog connection with mobile devices, works well on your PC, tablets, smartphones and more, it is compatible with iOS, Android, Windows, etc system, run your content creations on most software, such as live streaming on OBS, online chatting on Twitch, video creation on YouTube/TikTok, podcast recording on apple/Google, and more content creations on Facebook, Spotify, Discord, Zoom, Twitter, Instagram, Streamlabs and more.

Warm Tips

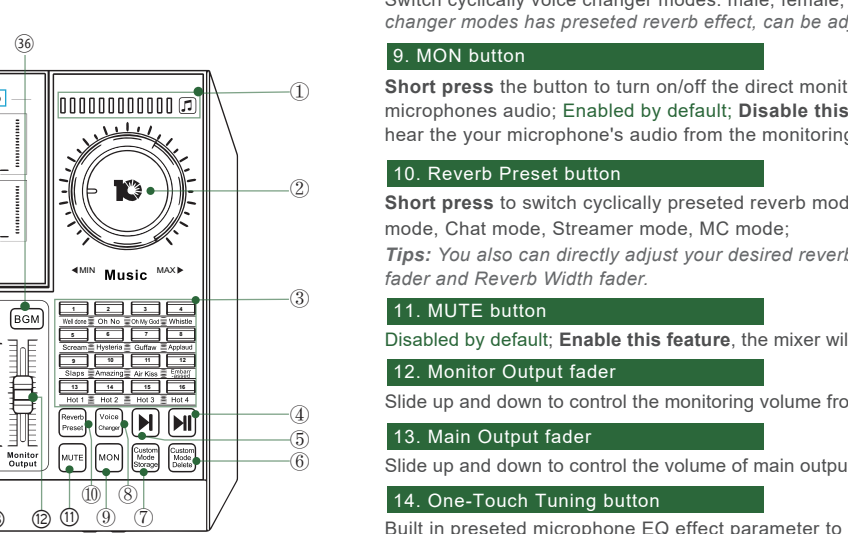
- Please do not charge the audio console during live streaming.
- Please charge the audio console before using for the first time.
- If not used for a long period, please charge the audio console every 3 months.
- Charging is also possible when the power is off.
- Do not charge for a long time.
- Please stop charging when the battery is fully charged to avoid over -charging.
- BT connection is limited by distance.
- BT feature is only for accompaniment music playback.
- the mixer is a entertainment audio mixer with interface and sound card, designed for live streaming, podcast, recording and other content creations, its audio quality is not as professional as Pro mixer.

For the latest information about this product (such as setup guide, troubleshooting, technical specifications, system requirements, compatibility information, etc.), please visit tenlamp-global.com.

Specifications

Name	G10	Chargt port	Type-c port
Dimension	272mm*195mm*60mm, 820g	OTG port	Type-c port
Environment	0°C~45°C	Live ports	3.5mm TRRS ports
Battery	Lithium ion 4000mAh/3.7V	Music port	3.5mm TRS port
Charging	DC+5V=1A max; 6H full charge	48V Mic port	XLR(3-pin)
Working Time	4~5H(48V Mic); 7~8H(3.5mm Mic)	LINE IN port	1/2" TRS & TS port
Output Power	10mW Load 32Ω	INST port	3.5mm TRS port
Frequency Response	50Hz~18KHz	Speaker port	3.5mm TRS port
Sampling Rate	48KHz/16Bit	Headset port	3.5mm TRRS port
BT Version	V5.0, compatible with 4.2	Mic ports	3.5mm TRS ports
BT Receive	<12m(No obstacle)	Monitor ports	3.5mm TRS ports
S/N Ratio	>102dB		
THD	<0.3%1KHz		

Top Panel



1. Music volume indicator

2. Music knob:

Rotate the knob clockwise to control the input volume of the accompaniment music from BT, Music jack and USB-C jack.

3. 16 fun soundpads

Instant trigger sound pads for live streaming/podcast/gaming atmosphere.

4. ▶|⏸ button:

Short press to play/pause accompaniment music(from the BT device input).

5. ▶ button :

Short press the button to switch to next music song, Long press the button fot 2s to switch to last music song(only for BT music accompaniment).

6. Custom Mode Delete button:

Short press the button to delete the saved custom voice mode(currently in use), It allows the user delete all of saved custom mode.

7. Custom Mode Storage button:

Save the current customized voice mode, can be saved up to 19 voice modes.

20. Pitch Changer button

Switch cyclically voice changer modes: male, female, baby, uncle, ec. *Tips: The voice changer modes has preseted reverb effect, can be adjusted by two reverb fader.*

9. MON button

Short press the button to turn on/off the direct monitoring function for monitoring all of microphones audio; Enabled by default; Disable this feature, you will not be able to hear the your microphone's audio from the monitoring headphones.

10. Reverb Preset button

Short press to switch cyclically preseted reverb modes: Original sound mode, KTV mode, Chat mode, Streamer mode, MC mode;

Tips: You also can directly adjust your desired reverb effect through Reverb Depth fader and Reverb Width fader.

11. MUTE button

Disabled by default; Enable this feature, the mixer will not input any mic audio.

12. Monitor Output fader

Slide up and down to control the monitoring volume from 2 Monitor ports & Headset port.

13. Main Output fader

Slide up and down to control the volume of main output to two Live port and USB-C port.

14. One-Touch Tuning button

Built in preseted microphone EQ effect parameter to beautify your voice.

15. POWER/LOOPBACK button

Long press to turn on/off the mixer; short press to turn on/off LOOPBACK feature. The Loopback feature is enabled-- the PC audio sent to the mixer via USB-C will be sent back to the USB connected PC device, the audio resources inside PC(music, video, game, web,ect) can be heard by streaming audience or recorded by recording device. The Loopback feature is disabled-- the PC audio sent to the mixer can be heard through the monitoring headphones, but will not be recorded, or heard by audience. Disabling this feature can avoid unnecessary echoes

16. Custom Mode/Factory Reset button

Short press to cyclically switch 12-step autotunes, including A, Bb, B, C, Db, D, Eb, E, F, Gb, G, Ab; Adjust the tune intensity by the Autotune knob; Hold the button for 2s to exit the autotune mode.

32. Ducking button

Enable Ducking function, the mixer will automatically lower the volume of background music while you speaking, highlighting your voice; Recover background music volume while you stop speaking. (for the background music inputted via Bluetooth and Music port, if need ducking the music from PC via USB-C, please turn on LOOPBACK feature).

33. Dry/Wet button

The default is Wet mode; Enable Dry mode, in monitoring headphone, you can hear the music, reverb, pitch, etc, but only the audio inputted by microphone will be recorded or exported to recording devices. Enable Wet mode, all reverb, changing-voice, and background music will be recorded or exported to recording devices.

34. Denoise button

Intelligent filtering of background noise(the mic pickedup), for filtering out lower noise signal.

35. BT button

Short press to turn on/off Bluetooth function. BT ID: G10 MIXER. BT function is only for inputting the background music. It is limited by distance(10m); The input volume of Bluetooth input is controlled by "Music" knob.

36. BGM button

Built-in two modes for eliminating the 85% vocal part of the music song(from the input via the Music jack and Bluetooth); --Remove vocal mode: Eliminate the 85% vocal part in the music song and retain the accompaniment part, only the accompaniment part of the music song can be heard in monitoring headphone, streaming audio, or recording audio.

--Following singing mode: you can hear whole music song in the monitoring headphone, but only the accompaniment part of the music song can be heard in streaming audio or recording audio, great for music streaming.

Tip: If for the music song from PC internal, please turn on LOOPBACK feature.

Common Problem

Noise Problem

- It is recommended to adjust the volume of the microphone, music, monitoring, etc. to a lower level after power on, and then gradually increase each volume to the appropriate level. Especially the volume of the microphone, if the volume of the microphone is adjusted to a higher level, it will pick up various noises that can not be heard by the human ear.
- Enable noise reduction function. After enabling noise reduction, the mixer will intelligently filter out the environmental noise picked up by the microphone and the background noise of various devices, providing you with clear & clean audio.
- Place the microphone reasonably and try to stay away from noise sources, such as air conditioning /fan vents, computer hosts, etc.

Howling Problem

- The volume of the microphone may be adjusted to a very high level, it is recommended to lower the microphone volume and gradually adjust it to the appropriate volume level.
- It is recommended to connect the speaker when using a dynamic microphone, as condenser microphones have high sensitivity and can easily cause howling.

35. BT button

Short press to turn on/off Bluetooth function. BT ID: G10 MIXER. BT function is only for inputting the background music. It is limited by distance(10m); The input volume of Bluetooth input is controlled by "Music" knob.

36. BGM button

Built-in two modes for eliminating the 85% vocal part of the music song(from the input via the Music jack and Bluetooth); --Remove vocal mode: Eliminate the 85% vocal part in the music song and retain the accompaniment part, only the accompaniment part of the music song can be heard in monitoring headphone, streaming audio, or recording audio.

--Following singing mode: you can hear whole music song in the monitoring headphone, but only the accompaniment part of the music song can be heard in streaming audio or recording audio, great for music streaming.

Tip: If for the music song from PC internal, please turn on LOOPBACK feature.

Common Problem

Noise Problem

- It is recommended to adjust the volume of the microphone, music, monitoring, etc. to a lower level after power on, and then gradually increase each volume to the appropriate level. Especially the volume of the microphone, if the volume of the microphone is adjusted to a higher level, it will pick up various noises that can not be heard by the human ear.
- Enable noise reduction function. After enabling noise reduction, the mixer will intelligently filter out the environmental noise picked up by the microphone and the background noise of various devices, providing you with clear & clean audio.
- Place the microphone reasonably and try to stay away from noise sources, such as air conditioning /fan vents, computer hosts, etc.

Howling Problem

- The volume of the microphone may be adjusted to a very high level, it is recommended to lower the microphone volume and gradually adjust it to the appropriate volume level.
- It is recommended to connect the speaker when using a dynamic microphone, as condenser microphones have high sensitivity and can easily cause howling.

35. BT button

Short press to turn on/off Bluetooth function. BT ID: G10 MIXER. BT function is only for inputting the background music. It is limited by distance(10m); The input volume of Bluetooth input is controlled by "Music" knob.

36. BGM button

Built-in two modes for eliminating the 85% vocal part of the music song(from the input via the Music jack and Bluetooth); --Remove vocal mode: Eliminate the 85% vocal part in the music song and retain the accompaniment part, only the accompaniment part of the music song can be heard in monitoring headphone, streaming audio, or recording audio.

--Following singing mode: you can hear whole music song in the monitoring headphone, but only the accompaniment part of the music song can be heard in streaming audio or recording audio, great for music streaming.

Tip: If for the music song from PC internal, please turn on LOOPBACK feature.

Common Problem

Noise Problem

- It is recommended to adjust the volume of the microphone, music, monitoring, etc. to a lower level after power on, and then gradually increase each volume to the appropriate level. Especially the volume of the microphone, if the volume of the microphone is adjusted to a higher level, it will pick up various noises that can not be heard by the human ear.
- Enable noise reduction function. After enabling noise reduction, the mixer will intelligently filter out the environmental noise picked up by the microphone and the background noise of various devices, providing you with clear & clean audio.
- Place the microphone reasonably and try to stay away from noise sources, such as air conditioning /fan vents, computer hosts, etc.

Howling Problem

- The volume of the microphone may be adjusted to a very high level, it is recommended to lower the microphone volume and gradually adjust it to the appropriate volume level.
- It is recommended to connect the speaker when using a dynamic microphone, as condenser microphones have high sensitivity and can easily cause howling.

35. BT button

Short press to turn on/off Bluetooth function. BT ID: G10 MIXER. BT function is only for inputting the background music. It is limited by distance(10m); The input volume of Bluetooth input is controlled by "Music" knob.

36. BGM button

Built-in two modes for eliminating the 85% vocal part of the music song(from the input via the Music jack and Bluetooth); --Remove vocal mode: Eliminate the 85% vocal part in the music song and retain the accompaniment part, only the accompaniment part of the music song can be heard in monitoring headphone, streaming audio, or recording audio.

--Following singing mode: you can hear whole music song in the monitoring headphone, but only the accompaniment part of the music song can be heard in streaming audio or recording audio, great for music streaming.

Tip: If for the music song from PC internal, please turn on LOOPBACK feature.

Common Problem

Noise Problem

- It is recommended to adjust the volume of the microphone, music, monitoring, etc. to a lower level after power on, and then gradually increase each volume to the appropriate level. Especially the volume of the microphone, if the volume of the microphone is adjusted to a higher level, it will pick up various noises that can not be heard by the human ear.
- Enable noise reduction function. After enabling noise reduction, the mixer will intelligently filter out the environmental noise picked up by the microphone and the background noise of various devices, providing you with clear & clean audio.
- Place the microphone reasonably and try to stay away from noise sources, such as air conditioning /fan vents, computer hosts, etc.

Howling Problem

- The volume of the microphone may be adjusted to a very high level, it is recommended to lower the microphone volume and gradually adjust it to the appropriate volume level.
- It is recommended to connect the speaker when using a dynamic microphone, as condenser microphones have high sensitivity and can easily cause howling.

35. BT button

Short press to turn on/off Bluetooth function. BT ID: G10 MIXER. BT function is only for inputting the background music. It is limited by distance(10m); The input volume of Bluetooth input is controlled by "Music" knob.

36. BGM button

Built-in two modes for eliminating the 85% vocal part of the music song(from the input via the Music jack and Bluetooth); --Remove vocal mode: Eliminate the 85% vocal part in the music song and retain the accompaniment part, only the accompaniment part of the music song can be heard in monitoring headphone, streaming audio, or recording audio.

--Following singing mode: you can hear whole music song in the monitoring headphone, but only the accompaniment part of the music song can be heard in streaming audio or recording audio, great for music streaming.

Tip: If for the music song from PC internal, please turn on LOOPBACK feature.

Common Problem

Noise Problem

- It is recommended to adjust the volume of the microphone, music, monitoring, etc. to a lower level after power on, and then gradually increase each volume to the appropriate level. Especially the volume of the microphone, if the volume of the microphone is adjusted to a higher level, it will pick up various noises that can not be heard by the human ear.
- Enable noise reduction function. After enabling noise reduction, the mixer will intelligently filter out the environmental noise picked up by the microphone and the background noise of various devices, providing you with clear & clean audio.
- Place the microphone reasonably and try to stay away from noise sources, such as air conditioning /fan vents, computer hosts, etc.

Howling Problem

- The volume of the microphone may be adjusted to a very high level, it is recommended to lower the microphone volume and gradually adjust it to the appropriate volume level.
- It is recommended to connect the speaker when using a dynamic microphone, as condenser microphones have high sensitivity and can easily cause howling.

35. BT button

Short press to turn on/off Bluetooth function. BT ID: G10 MIXER. BT function is only for inputting the background music. It is limited by distance(10m); The input volume of Bluetooth input is controlled by "Music" knob.

36. BGM button

Built-in two modes for eliminating the 85% vocal part of the music song(from the input via the Music jack and Bluetooth); --Remove vocal mode: Eliminate the 85% vocal part in the music song and retain the accompaniment part, only the accompaniment part of the music song can be heard in monitoring headphone, streaming audio, or recording audio.

--Following singing mode: you can hear whole music song in the monitoring headphone, but only the accompaniment part of the music song can be heard in streaming audio or recording audio, great for music streaming.

Tip: If for the music song from PC internal, please turn on LOOPBACK feature.

Common Problem

Noise Problem

- It is recommended to adjust the volume of the microphone, music, monitoring, etc. to a lower level after power on, and then gradually increase each volume to the appropriate level. Especially the volume of the microphone, if the volume of the microphone is adjusted to a higher level, it will pick up various noises that can not be heard by the human ear.
- Enable noise reduction function. After enabling noise reduction, the mixer will intelligently filter out the environmental noise picked up by the microphone and the background noise of various devices, providing you with clear & clean audio.
- Place the microphone reasonably and try to stay away from noise sources, such as air conditioning /fan vents, computer hosts, etc.

Howling Problem

- The volume of the microphone may be adjusted to a very high level, it is recommended to lower the microphone volume and gradually adjust it to the appropriate volume level.
- It is recommended to connect the speaker when using a dynamic microphone, as condenser microphones have high sensitivity and can easily cause howling.

35. BT button

Short press to turn on/off Bluetooth function. BT ID: G10 MIXER. BT function is only for inputting the background music. It is limited by distance(10m); The input volume of Bluetooth input is controlled by "Music" knob.

36. BGM button

Built-in two modes for eliminating the 85% vocal part of the music song(from the input via the Music jack and Bluetooth); --Remove vocal mode: Eliminate the 85% vocal part in the music song and retain the accompaniment part, only the accompaniment part of the music song can be heard in monitoring headphone, streaming audio, or recording audio.

--Following singing mode: you can hear whole music song in the monitoring headphone, but only the accompaniment part of the music song can be heard in streaming audio or recording audio, great for music streaming.

Tip: If for the music song from PC internal, please turn on LOOPBACK feature.

Common Problem

Noise Problem

- It is recommended to adjust the volume of the microphone, music, monitoring, etc. to a lower level after power on, and then gradually increase each volume to the appropriate level. Especially the volume of the microphone, if the volume of the microphone is adjusted to a higher level, it will pick up various noises that can not be heard by the human ear.
- Enable noise reduction function. After enabling noise reduction, the mixer will intelligently filter out the environmental noise picked up by the microphone and the background noise of various devices, providing you with clear & clean audio.
- Place the microphone reasonably and try to stay away from noise sources, such as air conditioning /fan vents, computer hosts, etc.

Howling Problem

- The volume of the microphone may be adjusted to a very high level, it is recommended to lower the microphone volume and gradually adjust it to the appropriate volume level.
- It is recommended to connect the speaker when using a dynamic microphone, as condenser microphones have high sensitivity and can easily cause howling.

35. BT button

Short press to turn on/off Bluetooth function. BT ID: G10 MIXER. BT function is only for inputting the background music. It is limited by distance(10m); The input volume of Bluetooth input is controlled by "Music" knob.

36. BGM button

Built-in two modes for eliminating the 85% vocal part of the music song(from the input via the Music jack and Bluetooth); --Remove vocal mode: Eliminate the 85% vocal part in the music song and retain the accompaniment part, only the accompaniment part of the music song can be heard in monitoring headphone, streaming audio, or recording audio.

--Following singing mode: you can hear whole music song in the monitoring headphone, but only the accompaniment part of the music song can be heard in streaming audio or recording audio, great for music streaming.

Tip: If for the music song from PC internal, please turn on LOOPBACK feature.

Common Problem

Noise Problem

- It is recommended to adjust the volume of the microphone, music, monitoring, etc. to a lower level after power on, and then gradually increase each volume to the appropriate level. Especially the volume of the microphone, if the volume of the microphone is adjusted to a higher level, it will pick up various noises that can not be heard by the human ear.
- Enable noise reduction function. After enabling noise reduction, the mixer will intelligently filter out the environmental noise picked up by the microphone and the background noise of various devices, providing you with clear & clean audio.
- Place the microphone reasonably and try to stay away from noise sources, such as air conditioning /fan vents, computer hosts, etc.

Howling Problem

- The volume of the microphone may be adjusted to a very high level, it is recommended to lower the microphone volume and gradually adjust it to the appropriate volume level.
- It is recommended to connect the speaker when using a dynamic microphone, as condenser microphones have high sensitivity and can easily cause howling.

35. BT button

Short press to turn on/off Bluetooth function. BT ID: G10 MIXER. BT function is only for inputting the background music. It is limited by distance(10m); The input volume of Bluetooth input is controlled by "Music" knob.

36. BGM button

Built-in two modes for eliminating the 85% vocal part of the music song(from the input via the Music jack and Bluetooth); --Remove vocal mode: Eliminate the 85% vocal part in the music song and retain the accompaniment part, only the accompaniment part of the music song can be heard in monitoring headphone, streaming audio, or recording audio.

--Following singing mode: you can hear whole music song in the monitoring headphone, but only the accompaniment part of the music song can be heard in streaming audio or recording audio, great for music streaming.

Tip: If for the music song from PC internal, please turn on LOOPBACK feature.

Common Problem

Noise Problem

- It is recommended to adjust the volume of the microphone, music, monitoring, etc. to a lower level after power on, and then gradually increase each volume to the appropriate level. Especially the volume of the microphone, if the volume of the microphone is adjusted to a higher level, it will pick up various noises that can not be heard by the human ear.
- Enable noise reduction function. After enabling noise reduction, the mixer will intelligently filter out the environmental noise picked up by the microphone and the background noise of various devices, providing you with clear & clean audio.
- Place the microphone reasonably and try to stay away from noise sources, such as air conditioning /fan vents, computer hosts, etc.

Howling Problem

- The volume of the microphone may be adjusted to a very high level, it is recommended to lower the microphone volume and gradually adjust it to the appropriate volume level.
- It is recommended to connect the speaker when using a dynamic microphone, as condenser microphones have high sensitivity and can easily cause howling.

35. BT button

Short press to turn on/off Bluetooth function. BT ID: G10 MIXER. BT function is only for inputting the background music. It is limited by distance(10m); The input volume of Bluetooth input is controlled by "Music" knob.

36. BGM button

Built-in two modes for eliminating the 85% vocal part of the music song(from the input via the Music jack and Bluetooth); --Remove vocal mode: Eliminate the 85% vocal part in the music song and retain the accompaniment part, only the accompaniment part of the music song can be heard in monitoring headphone, streaming audio, or recording audio.

--Following singing mode: you can hear whole music song in the monitoring headphone, but only the accompaniment part of the music song can be heard in streaming audio or recording audio, great for music streaming.

Tip: If for the music song from PC internal, please turn on LOOPBACK feature.

Common Problem

Noise Problem

- It is recommended to adjust the volume of the microphone, music, monitoring, etc. to a lower level after power on, and then gradually increase each volume to the appropriate level. Especially the volume of the microphone, if the volume of the microphone is adjusted to a higher level, it will pick up various noises that can not be heard by the human ear.
- Enable noise reduction function. After enabling noise reduction, the mixer will intelligently filter out the environmental noise picked up by the microphone and the background noise of various devices, providing you with clear & clean audio.
- Place the microphone reasonably and try to stay away from noise sources, such as air conditioning /fan vents, computer hosts, etc.

Howling Problem

- The volume of the microphone may be adjusted to a very high level, it is recommended to lower the microphone volume and gradually adjust it to the appropriate volume level.
- It is recommended to connect the speaker when using a dynamic microphone, as condenser microphones have high sensitivity and can easily cause howling.

35. BT button

Short press to turn on/off Bluetooth function. BT ID: G10 MIXER. BT function is only for inputting the background music. It is limited by distance(10m); The input volume of Bluetooth input is controlled by "Music" knob.

36. BGM button</

This device complies with part 15 of the FCC Rules. Operation is subject to the following two conditions: (1) This device may not cause harmful interference, and (2) this device must accept any interference received, including interference that may cause undesired operation.

Any Changes or modifications not expressly approved by the party responsible for compliance could void the user's authority to operate the equipment.

Note: This equipment has been tested and found to comply with the limits for a Class B digital device, pursuant to part 15 of the FCC Rules. These limits are designed to provide reasonable protection against harmful interference in a residential installation. This equipment generates uses and can radiate radio frequency energy and, if not installed and used in accordance with the instructions, may cause harmful interference to radio communications. However, there is no guarantee that interference will not occur in a particular installation. If this equipment does cause harmful interference to radio or television reception, which can be determined by turning the equipment off and on, the user is encouraged to try to correct the interference by one or more of the following measures:

- Reorient or relocate the receiving antenna.
- Increase the separation between the equipment and receiver.
- Connect the equipment into an outlet on a circuit different from that to which the receiver is connected.
- Consult the dealer or an experienced radio/TV technician for help.

FCC Radiation Exposure statement

The device has been evaluatec to meel general RF exposure requirement. The device can be used in porlable exposure condition without restriction.