



## SERVICE PARTS LIST

BULLETIN NO.  
**54-05-2770**

SPECIFY CATALOG NO. AND SERIAL NO. WHEN ORDERING PARTS

REVISED BULLETIN

DATE

### M18™ TRANSFER PUMP

Sep. 2023

CATALOG NO. **2771-20**

SERIAL NO. **H59A**

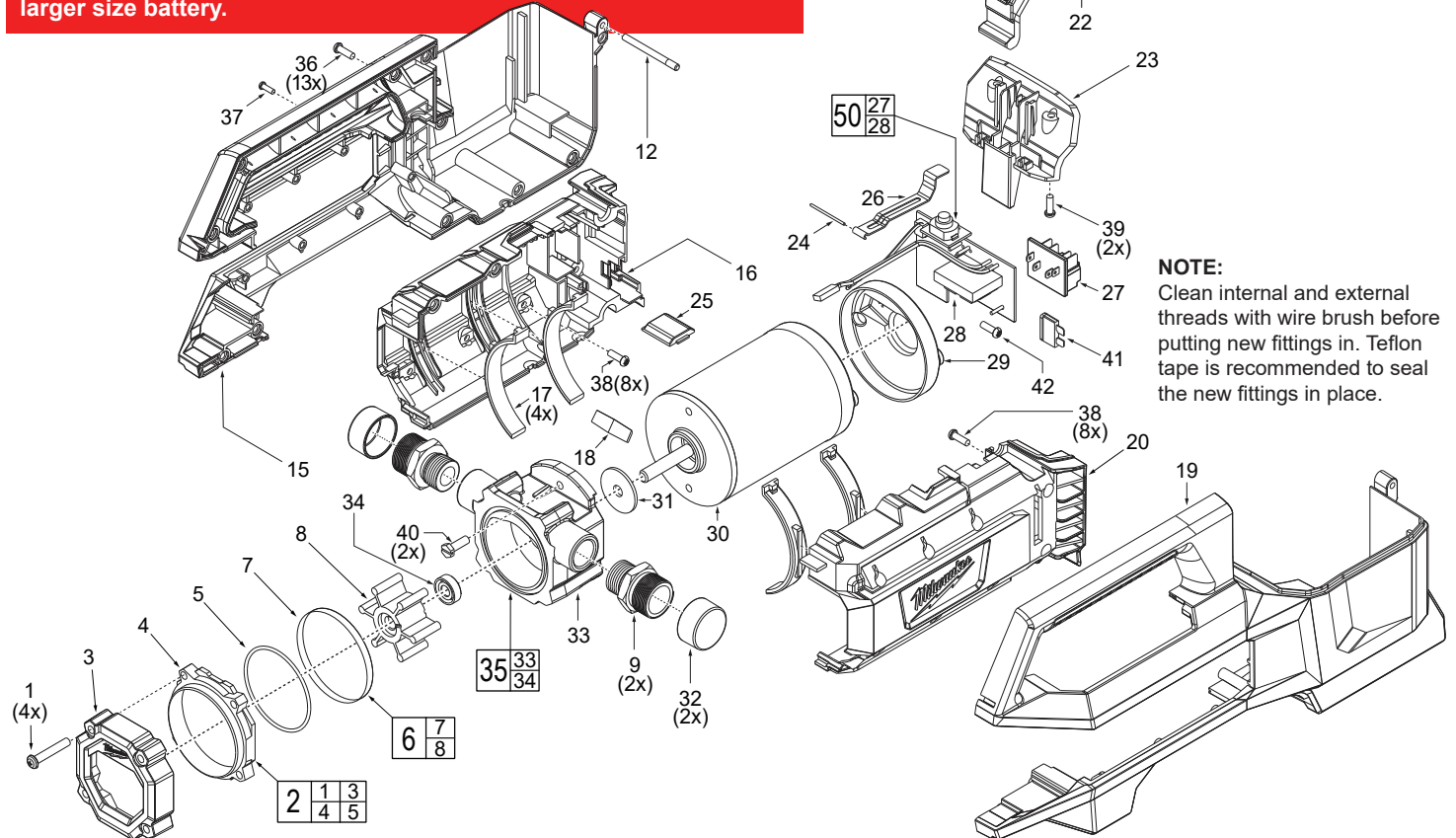
WIRING INSTRUCTION  
See Page 2

00 0 **EXAMPLE:**

Component Parts (Small #) Are Included  
When Ordering The Assembly (Large #).

#### NOTE:

Model 2771-20 M18™ TRANSFER PUMP (Serial Break 'A') is designed to operate off of several different M18 REDLITHIUM™ battery sizes from 1.5 amp-hours to 9.0 amp-hours. To power a 2771-20 M18™ TRANSFER PUMP (Serial Break 'A') with a 48-11-1812 M18™ REDLITHIUM™ 12.0 amp-hour battery, 12.0 Upgrade Service Kit 14-46-0089 must be ordered to accommodate the larger size battery.



#### NOTE:

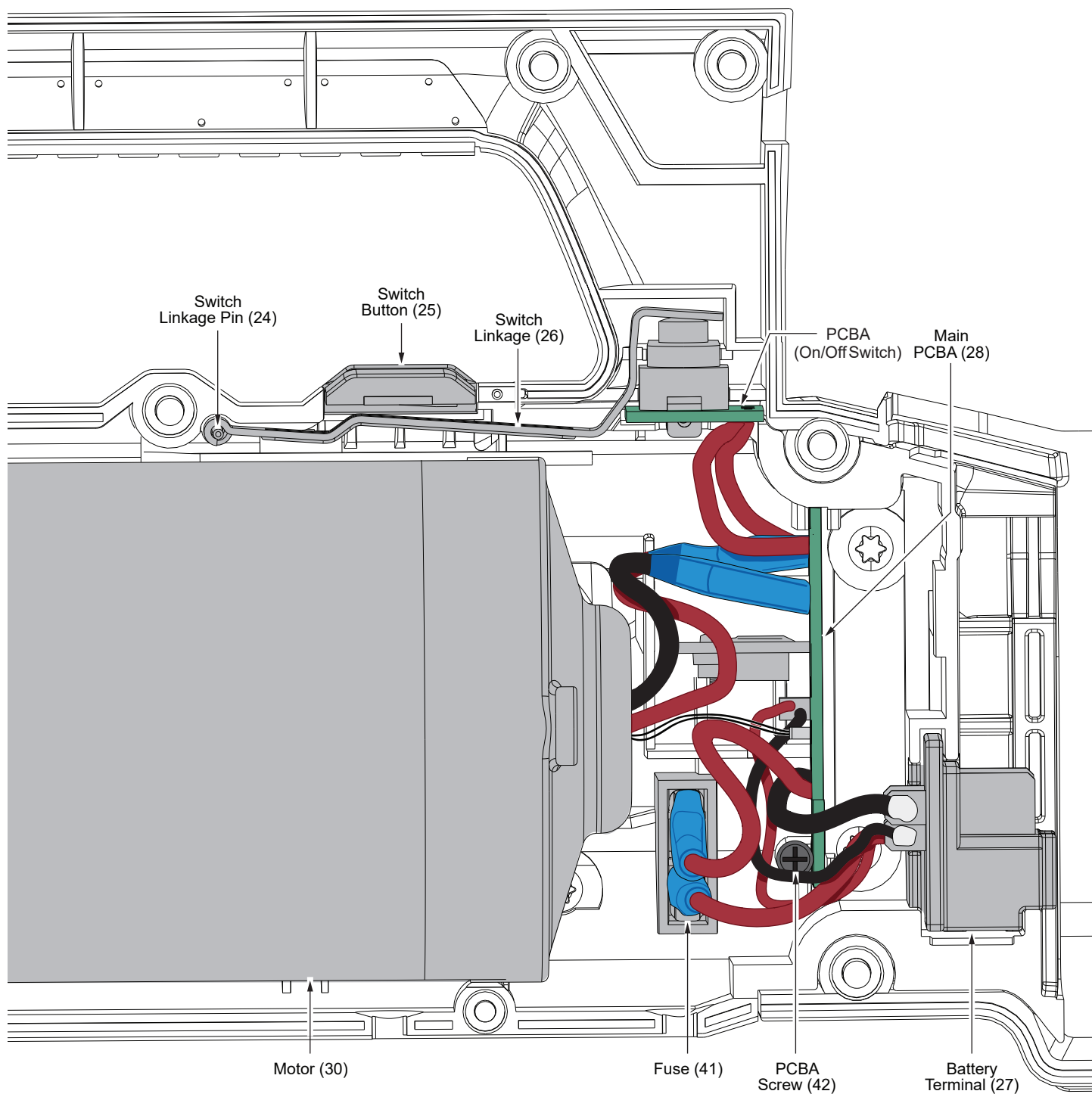
Clean internal and external threads with wire brush before putting new fittings in. Teflon tape is recommended to seal the new fittings in place.

FIG.	PART NO.	DESCRIPTION OF PART	NO. REQ.	FIG.	PART NO.	DESCRIPTION OF PART	NO. REQ.
1	06-82-0048	M5 x 30 Screw Kit (Set of 4)	(1)	29	22-68-0019	Motor End Cover	(1)
2	14-38-0018	Impeller Window Kit	(1)	30	16-01-0113	Motor	(1)
3	-----	Front Cover	(1)	31	45-88-0144	Rubber Washer	(1)
4	-----	Lens	(1)	32	30-16-0013	Threads Cap	(2)
5	-----	Window	(1)	33	-----	Pump Head	(1)
6	49-16-2771	Flexible Impeller Kit w/ Grease	(1)	34	-----	Oil Seal NBR	(1)
7	-----	O-Ring	(1)	35	42-32-0011	Pump Service Assembly	(1)
8	-----	Impeller	(1)	36	05-74-0446	M4 x 16 Screw	(13)
9	43-33-0026	Brass Fitting 1/2" NPT x 3/4" GHT	(2)	37	05-74-0444	M3 x 9 Screw	(1)
10	31-21-0021	Battery Door Kit	(1)	38	05-74-0443	M4 x 10 Screw	(16)
11	-----	Battery Door	(1)	39	05-74-0442	M4 x 12 Screw	(2)
12	-----	Battery Door Pin	(1)	40	05-74-0441	M5 x 10 Screw	(2)
13	12-20-0083	Service Nameplate (Not Shown)	(1)	41	22-09-0051	Fuse	(1)
15	43-40-0207	Right Half Protective Frame	(1)	42	-----	PCB Screw	(1)
16	31-44-0542	Right Half Housing	(1)	50	14-20-0578	PCBA + Terminal Block Kit	(1)
17	44-52-0060	Motor Cushion	(4)				
18	28-28-0047	Arrow Back Plate	(1)				
19	43-40-0206	Left Half Protective Frame	(1)				
20	31-44-0541	Left Half Housing	(1)				
21	44-74-0078	Battery Door Latch	(1)				
22	40-50-0429	Spring	(1)				
23	44-74-0074	Door Latch Bay	(1)				
24	44-66-0177	Axis Pin	(1)				
25	31-15-0104	Switch Button	(1)				
26	42-36-0038	Switch Linkage	(1)				
27	-----	Battery Terminal	(1)				
28	-----	PCBA Assembly	(1)				

#### FIG. NOTES

- 9 The brass fittings are a standard size and should be available to purchase at most hardware stores.
- 13 A clean, dry surface is essential for proper performance for any adhesive system. The area intended for application of any adhesive label or nameplate must be prepared by cleaning with isopropyl alcohol. The solvent is to be applied with a clean, lint free applicator and the surface allowed to dry before applying the label or nameplate.

## M18 Transfer Pump Wiring



### SCREW TORQUE SPECIFICATIONS

FIG.	PART NO.	WHERE USED	SEAT TORQUE	
			(kgf-cm)	(lb-in)
1	06-82-0048	Front Cover	11-15	10-13
36	05-74-0446	Housing Support	12-16	10-14
37	05-74-0444	Housing Support	6-8	5-7
38	05-74-0443	Protective Frame	7-9	6-8
39	05-74-0442	Battery Bracket	9-11	8-10
40	05-74-0441	Pump Head	10-13	9-11
42	-----	PCBA	6-8	5-7