

Instruction manual

OPTICAL SMOKE ALARM WITH 2 x 1,5V BATTERIES - 5 YEARS LIFETIME



Model: ASD-5

CE23
0333-CPR-292126
EN14604:2005/AC 2008
DoP no: 0523



CE 0333	EN14604:2005/AC 2008	
	Essential characteristics:	Performance:
Fito Products BV De Langkamp 12a 3961 MS Wijk bij Duurstede The Netherlands 23 0333-CPR-292126	Nominal activation conditions/sensitivity, response delay (response time) and performance under fire conditions:	Passed
	Operational reliability:	Passed
	Tolerance to supply voltage:	Passed
	Durability of operational reliability and response delay, temperature resistance:	Passed
Optical smoke detector, alerts you in the event of fire or smoke, and is suitable for residential buildings.	Durability of operational reliability, vibration resistance:	Passed
	Durability of operational reliability, humidity resistance:	Passed
	Durability of operational reliability, corrosion resistance:	Passed
	Durability of operational reliability, electrical stability:	Passed

RETAIN THESE INSTRUCTIONS FOR FUTURE USE!

These instructions for use contain important information for correct installation and use of your smoke detector. Please read this information carefully and retain these instructions for future use.

ACTIVATION OF THE SMOKE ALARM:

Insert the supplied batteries in the correct manner into the smoke alarm, pay attention to the + and -. When activated, the alarm will sound a tune.

Make sure that the smoke detector is working and that the batteries have been activated by pressing the test button for a few seconds. The smoke detector will give alarm and stop when you release the test button.

Certified by : AFNOR Certification
11, rue Francis de Pressensé - F-93571 La Plaine - Saint Denis Cedex
www.afnor.org

Characteristics certified by: AFNOR

Ceiling and wall mount	YES
Battery powered	YES
Autonomy 5 years	YES
Individual Alarm Indicator	YES
Alarm silence facility	YES
Suitable for installation in a caravan	YES
Option to connect external devices	NO
Interconnectable	NO

IMPORTANT INFORMATION

Correct usage will ensure you have valuable extra time to escape. Every correctly installed smoke detector will increase your potential escape time.

- A smoke alarm does not prevent fire.
- Install the smoke alarm in the correct place, if possible in the middle of the ceiling.
- Keep the smoke detector out of the reach of children.
- Test the unit on a monthly basis and after any period of absence. When the alarm does not sound, have your smoke alarm inspected by the service point or when the smoke alarm is more than 10 years old discard the alarm.
- **CAUTION:** Never test with fire!
- Clean the smoke alarm regularly (once a month) using the soft brush of a vacuum cleaner. In addition the smoke alarm can also be cleaned using a moist cloth.
- If the detector emits a beeping sound every 40 seconds, this means that the batteries are nearly flat and that you should replace them.
- The lifespan of smoke detectors is 10 years.
- A false alarm can be silenced by pressing the test and hush button.
- You can make your Model ASD-5 smoke detector less sensitive for ± 10 minutes by pressing shortly the test button. The detector will nonetheless sound the alarm if the quantity of smoke is too significant.

Important instructions in case of a fire alarm:

- Plan TWO escape routes and rehearse these with all members of the family.
- Agree upon a meeting point where everyone gathers in the event of a fire.
- In the event of a fire:**
 - Leave the building immediately together with all the members of your family. Gather outside at the agreed meeting point.
 - Make sure everyone is present.
 - Close all doors behind you and never open a warm door. If a door is warm, choose an alternative route.
 - In the event of considerable build-up of smoke, crawl out of the building keeping as close to the floor as possible.
 - Wherever possible, breathe through a cloth (preferably moist), or else hold your breath as much as you can. The majority of deaths and injuries are caused by smoke inhalation rather than fire itself.
 - Call the fire department outside.
 - Never go back into a burning building.
 - Additional information can be gathered at the local fire department.

SPECIFICATIONS

Power: 2 x 1,5V LR03 AAA Alkaline
Recommended batteries:

- PKCELL Ultra alkaline 1.5V LR03 AAA-AM-4
- DURACELL Plus Power Alkaline 1.5V LR03 MN2400

NOTE: The correct functioning of the smoke detector is ensured by the use of one of the recommended battery.

Battery life: 5 years under normal conditions
Usage: < 8 µA continue
< 70 mA in alarm
Usage temperature: 0°C tot + 55°C
Humidity: < 93% RH at 40°C
Sensitivity: Conform EN14604
Alarm volume: >85dB at 3 meter
Certification: AFNOR EN14604, CE-23, CPR

POSITIONING THE SMOKE DETECTOR

Recommended locations:

Minimum protection:

A smoke detector on each floor.

Maximum protection:

- Smoke detector in all rooms (with the exception of bathrooms, kitchen, garages, etc.)
- Heat detectors can be installed in bathrooms, kitchens, airing cupboards, utility rooms, etc. within 5 metres of a potential source of fire.



Figure 1

- The smoke detector should preferably be installed in the middle of the ceiling, at least 50 cm from the wall.
- If ceiling mounting is not possible to mount the detector on the wall. A minimum of 30 and maximum of 50 cm from the ceiling. (See Figure 3)
- In the case of pitched roofs, install the smoke detector on the sloping wall, at least 90 cm (measured vertically) from the ridge of the roof.
- See minimum and maximum protection (figures 1 & 2)
- Ensure that the detector can always be reached for testing and cleaning.

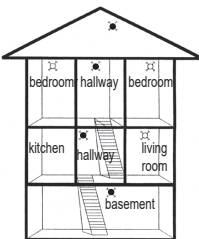


Figure 2

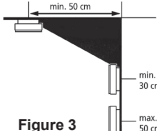


Figure 3

Never fit a smoke detector:

- In bathrooms, kitchens, shower rooms, garages, etc. Places where a smoke detector may go off needlessly due to condensation, normal smoke or gases. A smoke detector should be fitted at least 5 metres from such sources of smoke.
- Places where the temperature may exceed 55° C or fall below 0° C, e.g. attics, just above a fire-place, etc.
- In the vicinity of (or adjacent to) decorative objects, doors, sockets, lights, fittings, windows, wall ventilators, etc. which could mean that smoke does not reach the smoke detector. Minimum 50cm away.
- Surfaces that are usually warmer or colder than the rest of the room. Differences in temperature can prevent smoke from reaching the detector.
- Adjacent to or directly above stoves or heaters.
- In very high or difficult to reach places. This makes it hard to reach the detector to test or clean it.

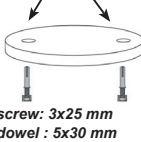
- In very dusty or dirty places. Accumulation of dust will prevent smoke from reaching the smoke chamber and in time will lead to a false alarm.
- Within 1 metre of dimmer switches and wiring. Some dimmer switches can trigger a fault in the detector.
- Within 1.5 metres of fluorescent lights. Electrical impulses can adversely affect the functioning of the detector.
- Outdoors and in spaces where a large number of insects are found. Small insects in the unit's detection chamber can disrupt the functioning of the detector.

The labels on the rear side of the detector contain important information.

INSTALLATION

1. Choose a location that satisfies the conditions as described in: Positioning the smoke detector.
2. Remove the base plate of the detector by turning the base plate anticlockwise (to the left).
3. Mark the mounting holes in the base plate and drill the holes (use a 6 mm drill). If you do not use the dowels, then use a 3 mm drill. Screw the base plate securely onto the ceiling. Make sure that the base plate is tight against the ceiling so that no air circulation above the smoke alarm is possible, which could impede smoke detection. If the opening is too large, this must be remedied by the use of a filler.
4. Insert the supplied batteries in the correct manner into the smoke alarm, pay attention to the + and -. When activated, the alarm will sound a tune.
5. Place the smoke detector on the base plate and turn it until the smoke detector clicks into the base plate. Turn the smoke detector clockwise until you hear a click.

Figure 4
Mounting holes :



screw: 3x25 mm
dowel : 5x30 mm

Figure 5



6. Make sure that the smoke detector is working properly and that the batteries have been activated by pressing the test button. A beeping noise that stops once the test button is released indicates that the smoke detector has been activated and is working properly.

ATTENTION: The smoke alarm should be covered or temporarily removed during renovation work or structural alterations. Clean the smoke detector with the soft brush from a vacuum cleaner once the day's work is complete, and then replace the detector, always testing it by pressing the test button once it has been reinstalled.

WARNING: the smoke alarm loses its functionality when covered.

FUNCTION TEST

Test your smoke alarm immediately after installation, monthly and after a period of absence.

- press the test button for at least 2-3 seconds
- a loud signal will sound and the LED will flash every 0,5 sec., this will stop once the test button has been released.

REPLACING THE BATTERIES

- Remove the batteries from the smoke alarm
- Place the new batteries in the correct way into the smoke alarm. Pay attention to the + and the -.
- Place the smoke alarm back on the base plate and test the smoke alarm, see chapter Function Test.

FUNCTION AND MEANING OF THE LIGHT AND SOUND SIGNALS

Normal situation: The red LED light will flash once every 320 seconds.

Alarm: Whenever the detector detects smoke, it will emit a loud pulsing alarm and the red LED light will flash continuously (every 0,5 sec.) until the smoke has cleared.

Low battery signal: A beeping signal every 40 seconds means that the batteries are nearly flat and need to be replaced immediately. This signal will sound for 30 days.

See for the recommended batteries chapter SPECIFICATIONS

Always do the function test when batteries are replaced.

Test Button: Check that the smoke detector is working and that the batteries have been activated by pressing the test button for at least 2-3 seconds. The smoke detector will give alarm and stop when you release the test button. Test the function of the smoke detector once per month. When the alarm does not sound, have your smoke alarm inspected by the service point or when the smoke alarm is more than 10 years old discard the alarm.

HUSH Button: Your detector is fitted with a pause button (see figure 5). This is the same button as the test button. Press the hush/test button shortly. Your smoke detector will then go into a so-called reduced sensitivity mode for ± 10 minutes. The red LED light will flash every 10 seconds to indicate that the Hush button has been activated. The detector will nonetheless sound the alarm if the smoke is dense or increasing in quantity.

False Alarm: Press the test-hush button to stop the alarm. (See Hush button)

Pre-alarm status: The red LED light flashes every second to indicate that the smoke chamber has been abruptly contaminated and needs to be cleaned. If thorough vacuuming does not help, then the contamination is so serious that the detector must be returned to the factory.

DUST WARNING: 3 short beep signals every 40 seconds means dust in the smoke chamber. Remove the batteries and clean the smoke detector by using the soft brush from a vacuum cleaner.

CAUSES OF FALSE ALARM

The smoke detector can be activated by steam, condensation, dust, smoke and small insects. These are to be prevented as far as possible. See section: Never fit a smoke detector. If a detector is frequently giving a false alarm, it might be necessary to install the detector in another location.

Maintenance:

- Never allow the detector to come into contact with fluids.
- Clean the detector regularly (once a month) using the soft brush from a vacuum cleaner. In addition the smoke alarm can also be cleaned using a moist cloth.
- Repairs must be carried out by the manufacturer.

The detector must never come into contact with liquids.

CAUTION: Do not paint to the detector and do not cover it.

LIMITATIONS OF SMOKE DETECTORS

In countries where they are commonly in use, smoke detectors have contributed to reducing deaths and injuries. Independent bodies have established that they were insufficient in around 35% of fires, namely in the following situations:

- Where the batteries have been removed or was not working. For that reason, you should test the unit regularly.
- Where smoke is not able to reach the detector in the event of a fire, meaning the unit cannot be set off. Examples include a fire on another floor where there is no smoke detector, a fire behind closed doors, a fire in a chimney or smoke being blown away from the detector. For that reason, smoke detectors are recommended in all rooms, or at any rate on every floor.
- Where the alarm is not heard. A person may not be woken by the alarm if that person had consumed excess alcohol and/or drugs.
- A few fires are not always detected on time, e.g. smoking in bed, if there is no smoke detector in the bedroom. In the case of escaping from gas or violent explosions, improperly storing explosive products and flammable liquids (petrol, paint, methylated spirit, etc.), electrical faults, acids, children playing with matches (fire).
- The lifespan of smoke detectors is 10 years.

PRODUCT WARRANTY

If used and maintained properly, the manufacturer guarantees this product against material and/or manufacturing faults for a period of 5 years from the original date of purchase by the consumer, with a maximum of 7 years after production date. Exceptions include damage arising from accidents or misuse. If the product becomes defective within the stated period, then it will be repaired or replaced free of charge. Please do not attempt to repair the product yourself or tinker with it, which will invalidate the warranty.

DOP (Declaration of Performance)

The DoP can be downloaded on our website www.fito.eu

INSTRUCTIONS FOR REMOVAL

Do not dispose of your old detector in the bin, but rather hand it in to a local collection point for small, electrical waste.



MADE IN EUROPE

Manufactured in Europe by: ARTON
6 Prutska str. - Chernivtsi 58008 - UKRAINE



European supplier:

Fito Products BV
De Langkamp 12a
3961 MS WJK BJ DUURSTEDE
Nederland
info@fito.eu - www.fito.eu