

# Installation Instructions

for use by heating contractor



## Direct Vent Combustion Air Filter Kit

for use with Vitocrossal 200 CI2 Boilers

Part # 7946566, 399/500/750/1000

Part # 7946565, 1500/2000

### Safety and Installation Requirements

Please ensure that these instructions are read and understood before starting any service work. Failure to comply with these instructions may cause product/property damage, severe personal injury and/or loss of life.

#### Working on the equipment

The installation, adjustment, service and maintenance of this product must be performed by a licensed professional heating contractor who is qualified and experienced in the installation, service, and maintenance of hot water boilers. There are no user serviceable parts on the boiler, burner or control.

Ensure that main power to the equipment being serviced is off.

Ensure that the main fuel supply valve to the boiler is closed.

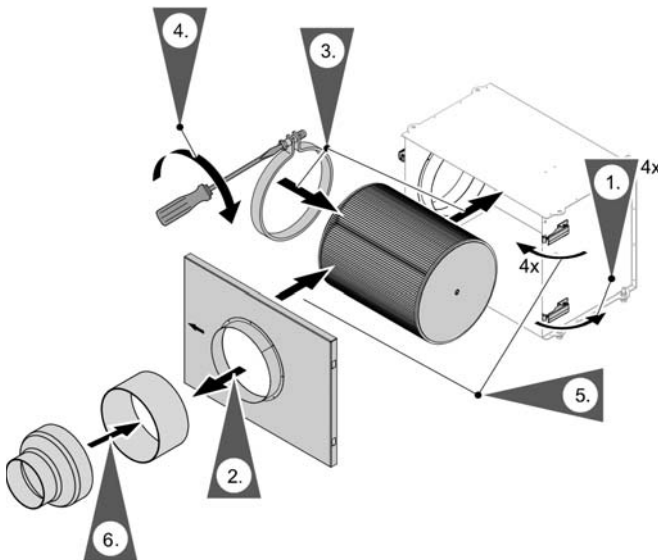
Take precautions to avoid accidental activation of power or fuel during service work.

Do not perform service work on any component part without ensuring safe operation of the heating system. When replacing parts, use original Viessmann or Viessmann approved replacement parts.



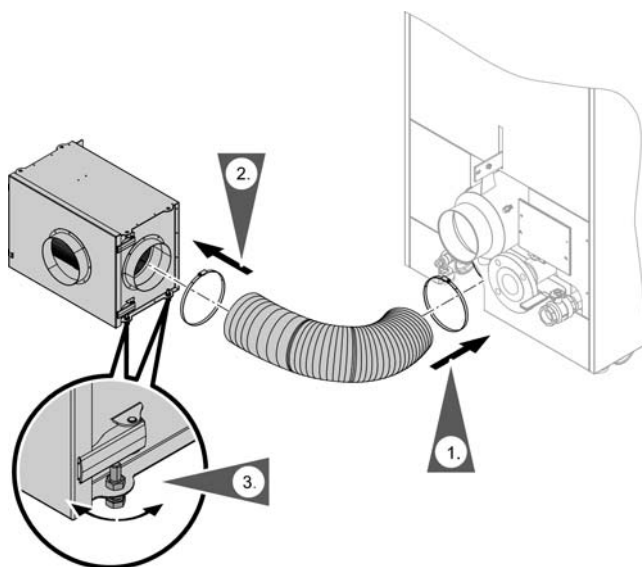
Refer to the Installation Instructions applicable to this boiler.

### Preparing the Filter Box



1. Release latches on the end of the combustion air filter box.
2. Remove filter box cover.
3. Place filter clamp on the base of the filter and install filter into the combustion air intake box..
4. Tighten the filter clamp to secure the filter in place.
5. Re-install filter box lid and latch in place.
6. For the 399, 500 and 1500 models install the supplied reducer.

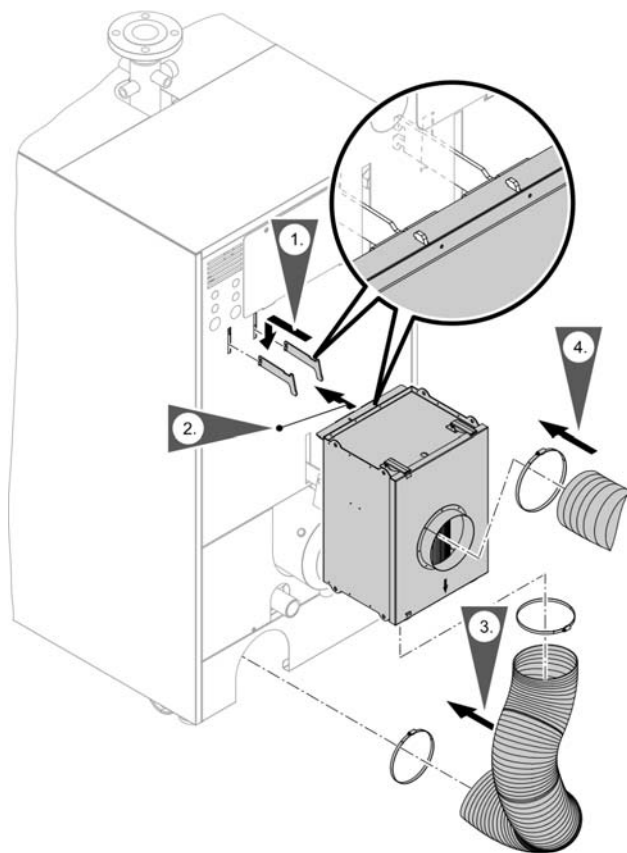
## Remote Mounted Filter Box



For remote floor mounting

1. Using hose clamp secure one end of the flexible combustion air tube to the combustion air intake adaptor kit.
2. Using a hose clamp secure the other end of the flexible combustion air intake tube to the filter box.
3. Use the levelling feet to level the filter box.

## Boiler Mounted Filter Box (CI2 399 to 1000)

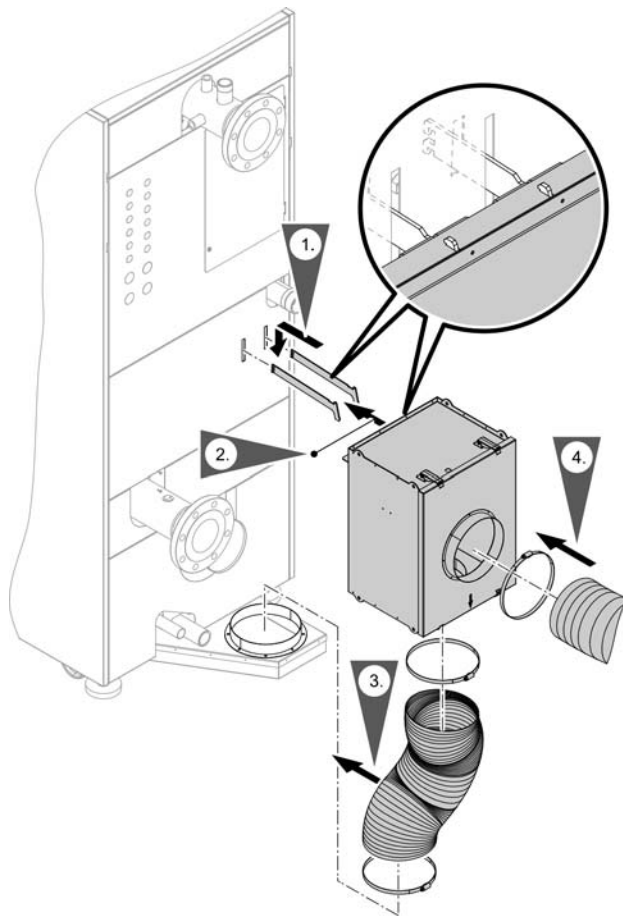


For boiler mounting

1. Install the filter box hanging brackets onto the boiler.
2. Hang the filter box on the bracket.
3. Using hose clamp secure one end of the flexible combustion air tube to the combustion air intake adaptor kit. Using a hose clamp secure the other end of the flexible combustion air intake tube to the filter box.
4. Using a hose clamp connect the flexible combustion air intake tube to the filter box inlet and connect the other end to the site combustion air intake ducting.

CI2 399/500/750/1000

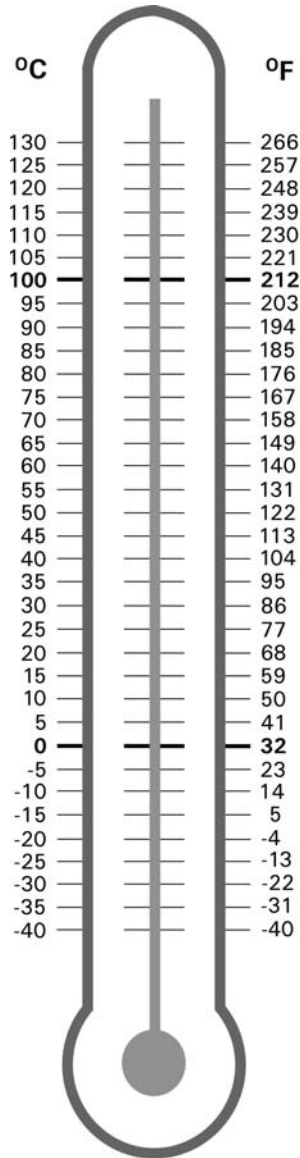
## Boiler Mounted Filter Box (CI2 1500/2000)



CI2 1500/2000

For boiler mounting

1. Install the filter box hanging brackets onto the boiler.
2. Hang the filter box on the bracket.
3. Using hose clamp secure one end of the flexible combustion air tube to the combustion air intake adaptor kit. Using a hose clamp secure the other end of the flexible combustion air intake tube to the filter box.
4. Using a hose clamp connect the flexible combustion air intake tube to the filter box inlet and connect the other end to the site combustion air intake ducting.



Printed on environmentally friendly  
(recycled and recyclable) paper.

Technical information subject to change without notice.

Scan for a  
digital copy  
of this  
document



Viessmann Manufacturing Company Inc.  
750 McMurray Road  
Waterloo, Ontario • N2V 2G5 • Canada  
**TechInfo Line 1-888-484-8643**  
1-800-387-7373 • Fax (519) 885-0887  
[www.viessmann.ca](http://www.viessmann.ca) • [info@viessmann.ca](mailto:info@viessmann.ca)

Viessmann Manufacturing Company (U.S.) Inc.  
45 Access Road  
Warwick, Rhode Island • 02886 • USA  
**TechInfo Line 1-888-484-8643**  
1-800-288-0667 • Fax (401) 732-0590  
[www.viessmann-us.com](http://www.viessmann-us.com) • [info@viessmann-us.com](mailto:info@viessmann-us.com)