

Cam, Cabinet & Switch Locks

FEATURES	Medeco ³	Logic	Medeco XT
Easily integrated into existing cam lock master key systems	●	●	●
Easy installation	●	●	●
Completely serviceable and may be rekeyed in the event of a lost or stolen key	●	●	●
UL437 Listing on cylinder for high security	●		
Cam locks available in all standard lengths, flats, and rotations	●	●	●
Switch locks available in single or double switch models and momentary and maintained positions with silver or gold contacts (for low amperage applications) designed to accept quick connect leads	●	●	●

Medeco³ Premium High Security

For effective mechanical protection against most forms of attack as well as protection against unauthorized duplicate keys, Medeco³ cylinders are recommended. Security features including hardened steel components, pins that must be elevated, rotated, and interact with both a sidebar and a slider, and additional pick resistant features make Medeco³ the cylinder of choice to protect people, property and information.

Loss & Liability Control

Many of the cylinders in this section are also available with an eCylinder Loss & Liability Control Solution. See the eCylinder Section for more details.

Cam Locks

Medeco® high security cam locks are recognized throughout the world as the standard for protection in a 3/4 inch diameter lock. Medeco® Cam Locks utilize hardened, stainless steel inserts throughout the cylinder to provide the ultimate defense against drilling, pulling, and other forms of vandal attacks. Patented key control programs prevent the unauthorized duplication of keys and maintain system integrity. Keyed alike, keyed different, or master keyed, Medeco® offers a complete line of cam locks in a wide variety of sizes and functions to meet your specific needs.



Benefits:

- All Medeco® cylinders are constructed of durable machined brass components.
- Hardened stainless steel inserts inside the cylinder provide the ultimate defense against drilling and other forms of physical attack.
- Unique elevating and rotating tumbler pin system is virtually pick proof.
- Patented Medeco³ keys may only be duplicated by Medeco® or an authorized Medeco® service outlet, and only at your request.
- Locks can be keyed alike, keyed different, or master keyed depending on your specific needs.
- Available in various lengths and rotations.

Technical Information:

- Four or five pin models available depending on size
- Available in three standard sizes, 1 1/16 inch, 7/8 inch and 1 1/8 inch
- Two flat models available, key retaining only
- Clockwise or counterclockwise rotation, 90 or 180 degrees
- Keyed alike, keyed different or master keyed

Warranty:

Warranted for two (2) years against manufacturer's defects. See the Medeco® limited warranty for full details

Finishes:

- 26 satin chrome finish standard
- Other finishes available, depending on volume

Certification:

- UL437 Listed

Applications:

Medeco® Cam Locks can be used in any standard 3/4 inch diameter application and a multitude of markets including:

- | | |
|------------------|-------------------|
| • Safe | • Utility |
| • Communication | • Data Encryption |
| • Alarm | • Cabinet |
| • Access control | • Transit |
| • Banking | • Lockers |

Available Key Technologies:

Mechanical:

- Medeco³

eCylinder:

- Medeco Logic
- Medeco XT

Medeco³ All-In-One Cam Lock Kits

Description	Part Number	Medeco ³	BiLevel	Medeco X4	eCylinder
7/8" Length 5 Pin Cam Lock Kit	60*0350T-KIT (P)				
	60*0350T-KIT (S)				
1 1/8" Length 5 Pin Cam Lock Kit	60*0650T-KIT (P)				
	60*0650T-KIT (S)				
5/8" Length 5 Pin Cam Lock Kit	60*1150T-KIT (P)				
	60*1150T-KIT (S)				
1 1/2" 5 Pin Cam Lock Kit	60*1450T-KIT (P)				
	60*1450T-KIT (S)				

Medeco X4 Cam Lock Kit

Description	Part Number	Medeco ³	BiLevel	Medeco X4	eCylinder
Medeco X4 7 pin cam lock kit with two cams, hex nut, lock washer, mounting washer, and spacer collar.	21*0503-26 (P)				
	21*0503-26 (S)				

There is a 6 piece minimum order quantity for high security cam locks.

All cam lock kits include: CP-040500 pronged washer, CT-A05 flat cam, CT-D05 flat cam, CT-J01 offset cam, CT-H07 offset cam, CP-040451 90 degree stop washer, CP-050060 3/4" - 27 mounting nut and 2 keys.

Master keying is not available in a cam lock kit, but may be custom ordered with specific cam locks listed on the following pages.

****Refer to the eCylinder section for more detail on specific technologies available and pricing. The * in the part number is replaced with:**
T = Medeco³, S = Medeco³ Logic, J = Medeco³ BiLevel, W = Biaxial, V = Medeco Biaxial Logic, K = Medeco KM, N = Medeco X4, C = Medeco Logic,
“-” = Original, Z = Medeco Original KW Logic, G = Medeco XT ***See key section for surcharges for custom coined cut keys or special stamping requirements.
Note: (P) refers to **Pinned** and **(S)** to **Sub-Pinned** at the end of each part string in the price book.

High Security Cam Locks

Description	Part Number	Medeco ³	BiLevel	Medeco X4	eCylinder
5 pin, 1 1/16" Camlock	60*0250T (P) 60*0250T (S)				
5pin, 7/8" Camlock	60*0350T (P) 60*0350T (S)				
5pin, 1" Camlock	60*0450T (P) 60*0450T (S)				
4 pin, 7/8" Camlock	60*0550T (P) 60*0550T (S)				
5 pin, 1 1/8" Camlock	60*0650T (P) 60*0650T (S)				
4 pin, 1 1/16" Camlock	60*0750T (P) 60*0750T (S)				
4 pin, 5/8" Camlock	60*0850T (P) 60*0850T (S)				
5 pin, 3/4" Camlock	60*0950T (P) 60*0950T (S)				
5 pin, 5/8" Camlock	60*1150T (P) 60*1150T (S)				
3 pin, 7/16" Camlock	60*1250T (P) 60*1250T (S)				
3 pin, 5/8" Camlock	60*1251T (P) 60*1251T (S)				
5 pin, 1 1/2" Camlock	60*1450T (P) 60*1450T (S)				
5 pin, 2" Camlock	60*1452T (P) 60*1452T (S)				

You must specify the operation code to complete the part number. Keys and cams are ordered separately. Standard sizes described, contact Medeco customer service or medeco.com for variations not listed.

There is a 6 piece minimum order quantity for high security cam locks.

Cam Lock Operation Codes

Description	Part Number
2 flat, 1 Keypull, Clockwise 90 degree	219
2 Flat, 2 Keypull, Clockwise 90 degree	229
2 Flat, 1 Keypull, Counterclockwise 90 degree	239
2 Flat, 2 Keypull, Counterclockwise 90 degree	249
2 Flat, 1 Keypull, Clockwise 180 degree	259
2 Flat, 2 Keypull, Clockwise 180 degree	269
2 Flat, 1 Keypull, Counterclockwise 180 degree	279
2 Flat, 2 Keypull, Counterclockwise 180 degree	289

**Refer to the eCylinder section for more detail on specific technologies available and pricing. The * in the part number is replaced with:
T = Medeco³, S = Medeco³ Logic, J = Medeco³ BiLevel, W = Biaxial, V = Medeco Biaxial Logic, K = Medeco KM, N = Medeco X4, C = Medeco Logic,
“-” = Original, Z = Medeco Original KW Logic, G = Medeco XT ***See key section for surcharges for custom coined cut keys or special stamping requirements.
Note: (P) refers to **Pinned** and **(S)** to **Sub-Pinned** at the end of each part string in the price book.

Removable Core Cam Locks

Medeco® Cam Locks are available with a removable core feature allowing cores to be changed out in seconds, to provide an entirely new keying combination. For applications that may require instantaneous re-keying due to lost or stolen keys, or where periodic re-keying is done as a matter of good business practice, Medeco® Removable Core Cam Locks save valuable time and money. Removable Core Cam Locks offer the same high security features of a Medeco® Cam Lock with the convenience of a removable core.



Benefits:

- Removable cores can be changed out in seconds to provide a new, secure keying combination.
- All Medeco® cylinders are constructed of durable machined brass components.
- Hardened stainless steel inserts inside the cylinder provide the ultimate defense against drilling and other forms of physical attack.
- Unique elevating and rotating tumbler pin system is virtually pick proof.
- Patented Medeco³ keys may only be duplicated by Medeco® or an authorized Medeco® service outlet, and only at your request.
- Locks can be keyed alike, keyed different, or master keyed depending on your specific needs.
- Available in various lengths and rotations.

Technical Information:

- Four or five pin models available depending on size
- Available in three standard sizes, 1 1/16 inch, 7/8 inch and 1 1/8 inch
- Two flat models available, key retaining only
- Clockwise or counterclockwise rotation, 90 or 180 degrees
- Keyed alike, keyed different or master keyed

Warranty:

Warranted for two (2) years against manufacturer's defects. See the Medeco® limited warranty for full details

Finishes:

- 26 satin chrome finish standard
- Other finishes available, depending on volume

Applications:

- Medeco® Removable Core Cam Locks can be used in any standard 3/4 inch diameter application and a multitude of markets including:

- | | |
|------------------|-------------------|
| • Safe | • Utility |
| • Communication | • Data Encryption |
| • Alarm | • Cabinet |
| • Access control | • Transit |
| • Banking | • Lockers |

Available Key Technologies:

Mechanical:

- Medeco³

High Security Removable Core Cam Locks

Description	Part Number	Medeco ³	BiLevel	Medeco X4	eCylinder
4 pin, 1 1/16" Removable core camlock	60*7155XT (P)				
	60*7155XT (S)				
4 pin, 7/8" Removable core camlock	60*7255XT (P)				
	60*7255XT (S)				
4 pin, 1 1/8" Removable core camlock	60*7355XT (P)				
	60*7355XT (S)				
5 pin, 1 1/8" Removable core camlock	60*7455XT (P)				
	60*7455XT (S)				
5 pin, 7/8" Removable core camlock	60*7555XT (P)				
	60*7555XT (S)				
Plug for Removable Core Cam Locks. Cam locks are provided with plug, but additional plugs may be ordered separately.	66*391XXX (P)				
	66*391XXX (S)				

Keys may be ordered separately.

X = Rotation for Removable Core Cam Lock

Description	Part Number
90 degree Clockwise	0
90 degree Counter Clockwise	1
180 degree Clockwise	2
180 degree Counter Clockwise	3



A Series Flat Cams

Description	Part Number
5/8" Flat Cam	CT-A00
3/4" Flat Cam	CT-A01
7/8" Flat Cam	CT-A02
1" Flat Cam	CT-A03
1 1/8" Flat Cam	CT-A04
1 1/4" Flat Cam	CT-A05
1 3/8" Flat Cam	CT-A06
1 1/2" Flat Cam	CT-A07
1 5/8" Flat Cam	CT-A08
1 3/4" Flat Cam	CT-A09
2" Flat Cam	CT-A11
2 1/8" Flat Cam	CT-A12
2 1/4" Flat Cam	CT-A13
2 3/8" Flat Cam	CT-A14
2 1/2" Flat Cam	CT-A15
2 5/8" Flat Cam	CT-A16
3" Flat Cam	CT-A19

**Refer to the eCylinder section for more detail on specific technologies available and pricing. The * in the part number is replaced with:
T = Medeco³, S = Medeco³ Logic, J = Medeco³ BiLevel, W = Biaxial, V = Medeco Biaxial Logic, K = Medeco KM, N = Medeco X4, C = Medeco Logic,
“-” = Original, Z = Medeco Original KW Logic, G = Medeco XT ***See key section for surcharges for custom coined cut keys or special stamping requirements.
Note: (P) refers to **Pinned** and **(S)** to **Sub-Pinned** at the end of each part string in the price book.



C Series Flat Cams, 45° Tenon

Description	Part Number
7/8" Flat Cam	CT-C02
1 1/8" Flat Cam	CT-C04
1 1/4" Flat Cam	CT-C05
1 5/8" Flat Cam	CT-C08
1 3/4" Flat Cam	CT-C09
2" Flat Cam	CT-C11



D Series Flat Cams, Horizontal Tenon

Description	Part Number
5/8" Flat Cam	CT-D00
3/4" Flat Cam	CT-D01
7/8" Flat Cam	CT-D02
1" Flat Cam	CT-D03
1 1/8" Flat Cam	CT-D04
1 1/4" Flat Cam	CT-D05
1 3/8" Flat Cam	CT-D06
1 1/2" Flat Cam	CT-D07
1 5/8" Flat Cam	CT-D08
1 3/4" Flat Cam	CT-D09
2" Flat Cam	CT-D11
2 1/8" Flat Cam	CT-D12
2 1/2" Flat Cam	CT-D15
3" Flat Cam	CT-D19



H Series Offset Cam, Vertical Tenon

Description	Part Number
1 1/4" Cam with 1/8" offset	CT-H00
1 1/8" Cam with 7/32" offset	CT-H07
1 1/8" Cam with 1/8" offset	CT-H09
1 1/2" Cam with 7/32" offset	CT-H14
1 1/4" Cam with 7/32" offset	CT-H15
1 1/8" Cam with 5/16" offset	CT-H16
1 1/4" Cam with 5/16" offset	CT-H17
1 3/4" Cam with 5/16" offset	CT-H19
2" Cam with 5/16" offset	CT-H20
7/8" Cam with 5/32" offset	CT-H27
1 3/4" Cam with 7/32" offset	CT-H30
1 1/2" Cam with 5/16" offset	CT-H32

**Refer to the eCylinder section for more detail on specific technologies available and pricing. The * in the part number is replaced with:
 T = Medeco³, S = Medeco³ Logic, J = Medeco³ BiLevel, W = Biaxial, V = Medeco Biaxial Logic, K = Medeco KM, N = Medeco X4, C = Medeco Logic,
 "-" = Original, Z = Medeco Original KW Logic, G = Medeco XT ***See key section for surcharges for custom coined cut keys or special stamping requirements.
Note: (P) refers to **Pinned** and **(S)** to **Sub-Pinned** at the end of each part string in the price book.



J Series Offset Cam, Horizontal

Description	Part Number
1 1/8" Cam with 7/32" offset	CT-J01
1" Cam with 1/8" offset	CT-J05
1 1/4" Cam with 1/8" offset	CT-J07
1 5/8" Cam with 1/8" offset	CT-J08
2 1/8" Cam with 1/8" offset	CT-J11
1 1/4" Cam with 7/32" offset	CT-J12
1 1/8" Cam with 5/16" offset	CT-J13
1 1/4" Cam with 5/16" offset	CT-J14
1 5/8" Cam with 5/16" offset	CT-J15
2 1/8" Cam with 5/16" offset	CT-J18
1 1/8" Cam with 5/32" offset	CT-J22
1 1/2" Cam with 5/16" offset	CT-J27
2 1/8" Cam with 7/32" offset	CT-J28
7/8" Cam with 5/32" offset	CT-J29

3/4" Removable Plug Lock

Description	Part Number	Medeco ³	BiLevel	Medeco X4	eCylinder
1 keypull, 3/4" Removable plug lock	64*0250T (P)				
	64*0250T (S)				
2 keypull, 3/4" Removable plug lock	64*0251T (P)				
	64*0251T (S)				

1 1/8" Removable Plug Lock

Description	Part Number	Medeco ³	BiLevel	Medeco X4	eCylinder
1 keypull, vertical flats, flush mount	64*0550T (P)				
	64*0550T (S)				
1 keypull, horizontal flats, flush mount	64*0550AT (P)				
	64*0550AT (S)				
2 keypull, vertical flats, surface mount with tapered bezel	64*0550FT (P)				
	64*0550FT (S)				

Keys are ordered separately.

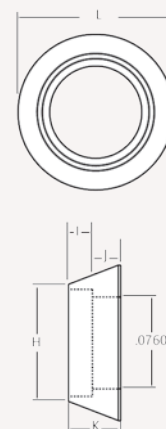
**Refer to the eCylinder section for more detail on specific technologies available and pricing. The * in the part number is replaced with:
 T = Medeco³, S = Medeco³ Logic, J = Medeco³ BiLevel, W = Biaxial, V = Medeco Biaxial Logic, K = Medeco KM, N = Medeco X4, C = Medeco Logic,
 "-" = Original, Z = Medeco Original KW Logic, G = Medeco XT ***See key section for surcharges for custom coined cut keys or special stamping requirements.
Note: (P) refers to **Pinned** and **(S)** to **Sub-Pinned** at the end of each part string in the price book.

Security Collars

Description	Part Number
Cam lock security collar	CP-070501
Cam lock security collar	CP-070131
Cam lock security collar	CP-070161
Cam lock security collar	CP-070171
Cam lock security collar	CP-070441
Cam lock security collar	CP-070201
Cam lock security collar	CP-070111
Cam lock security collar	CP-070141
Cam lock security collar	CP-070181
Cam lock security collar	CP-070481

Security Collars

Part Number	(H)	(I)	(J)	(K)	(L)
CP-070501	1.000"	.142"	.170"	.312"	1.290"
CP-070131	.885"	.142"	.170"	.312"	1.210"
CP-070161	.885"	.188"	.250"	.438"	1.356"
CP-070171	.885"	.200"	.238"	.438"	1.290"
CP-070441	.885"	.260"	.070"	.330"	1.210"
CP-070201	.885"	.262"	.050"	.312"	1.210"
CP-070111	.885"	.278"	.160"	.438"	1.290"
CP-070141	.885"	.325"	.050"	.375"	1.275"
CP-070181	1.000"	.450"	.050"	.500"	1.250"
CP-070481	1.000"	.638"	.050"	.688"	1.313"

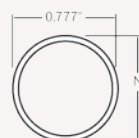


Spacers

Description	Part Number
Cam lock spacer, obtain specific part number from following dimension chart.	CP-160XXX

Spacers

Part Number	(M)	(N)
CP-160051	.125"	.875"
CP-160101	.140"	.875"
CP-160071	.188"	.875"
CP-160111	.200"	.875"
CP-160081	.250"	.875"
CP-160091	.275"	.875"
CP-160301	.375"	.875"
CP-160121	.400"	.875"
CP-160061	.530"	.875"
CP-160271	.437"	.875"
CP-160541	.031"	.875"
CP-160551	.062"	.875"
CP-160571	.312"	.875"
CP-160591	.062"	.995"
CP-160601	.125"	.995"
CP-160611	.250"	.995"



**Refer to the eCylinder section for more detail on specific technologies available and pricing. The * in the part number is replaced with:
T = Medeco³, S = Medeco³ Logic, J = Medeco³ BiLevel, W = Biaxial, V = Medeco Biaxial Logic, K = Medeco KM, N = Medeco X4, C = Medeco Logic,
“-” = Original, Z = Medeco Original KW Logic, G = Medeco XT ***See key section for surcharges for custom coined cut keys or special stamping requirements.
Note: (P) refers to **Pinned** and **(S)** to **Sub-Pinned** at the end of each part string in the price book.

Pop-Out, T-Handle Cylinder

Description	Part Number	Medeco ³	BiLevel	Medeco X4	eCylinder
5 pin, zinc deadbolt	64-0155CT (P)				
	64-0155CT (S)				
5 pin, zinc springbolt	64-0155T (P)				
	64-0155T (S)				
4 pin, zinc springbolt	64-0750ET (P)				
	64-0750ET (S)				
4 pin, zinc deadbolt	64-0750GT (P)				
	64-0750GT (S)				
4 pin, steel springbolt	64-0950T (P)				
	64-0950T (S)				
4 pin, steel deadbolt	64-0952T (P)				
	64-0952T (S)				
4 pin, steel springbolt, steel shell	64-1050T (P)				
	64-1050T (S)				
4 pin, steel deadbolt, steel shell	64-1051T (P)				
	64-1051T (S)				

Keys are ordered separately.

**Refer to the eCylinder section for more detail on specific technologies available and pricing. The * in the part number is replaced with:
T = Medeco³, S = Medeco³ Logic, J = Medeco³ BiLevel, W = Biaxial, V = Medeco Biaxial Logic, K = Medeco KM, N = Medeco X4, C = Medeco Logic,
“-” = Original, Z = Medeco Original KW Logic, G = Medeco XT ***See key section for surcharges for custom coined cut keys or special stamping requirements.
Note: (P) refers to **Pinned** and **(S)** to **Sub-Pinned** at the end of each part string in the price book.

Cam Locks

How to Order Cam & Switch Locks:

Here are the 2 things you need to know to order cam locks:

1. What's the base part number by determining the length of cam lock needed?
2. What keyway?

Here are the 3 things you need to know to order switch locks:

1. Do you need a single or double switch?
2. What keyway?
3. What operation code do you need?

To order custom high security cam locks, switch locks, threaded extension locks, or other specialty cylinders:

Go to the cam lock part number configurator at www.medeco.com, or contact Customer Service for assistance. **All cam and switch locks (except All N One cam locks) in this section are priced without keys.**

Offering hundreds of cam and cylinder length configurations, Medeco can fit nearly any application requiring a 3/4" diameter lock. Don't see the cam lock you need listed in our product catalog? Call our customer service department – chances are we have the specialty configuration that you need.

Many cam and switch locks are also available. See the e-cylinder section for more information.

There is a 6 pc. minimum order quantity for high security cam locks. Distributors are available with inventory for overnight shipping in quantities less than 6.

You must specify the operation code and cam to complete the cam lock part number. With the exception of the cam lock kits, Medeco cam locks do not include keys or cams unless specified. Consult Medeco customer service or www.medeco.com for cam lock variations not listed.

Cam Lock Operation Codes

2 Flat, 1 Keypull, Clockwise 90°	219	2 Flat, 1 Keypull, Clockwise 180°	259
2 Flat, 2 Keypull, Clockwise 90°	229	2 Flat, 2 Keypull, Clockwise 180°	269
2 Flat, 1 Keypull, Counter-clockwise 90°	239	2 Flat, 2 Keypull, Counter-clockwise 180°	279
2 Flat, 2 Keypull, Counter-clockwise 90°	249	2 Flat, 1 Keypull, Counter-clockwise 180°	289

You must specify the rotation and cam to complete the removable core cam lock part number. With the exception of the cam lock kits, Medeco cam locks do not include keys or cams unless specified. Consult Medeco customer service or www.medeco.com for variations not listed.

X = Rotation for Removable Core Cam Locks

0 = 90° Clockwise

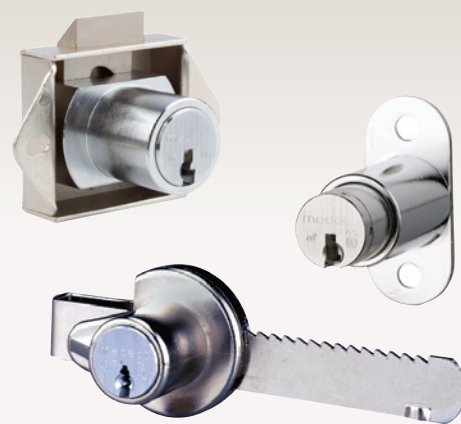
1 = 90° Counter-clockwise

2 = 180° Clockwise

3 = 180° Counter-clockwise

Cabinet Locks

Medeco® Cabinet Locks are specifically designed for drawer or cabinet door applications where a conventional utility cam lock may not be suitable. Cabinet Locks utilize heavy-duty bolts and multi-point attachment to the mounting surface in order to withstand the heavy use and higher physical security some applications may require. All Medeco® Cabinet Locks feature solid brass and steel construction, available in either fixed or removable core. Patented key programs prevent the unauthorized duplication of keys and maintain system integrity. Keyed alike, keyed different, or master keyed, the Medeco® Cabinet Lock is the perfect solution for your showcase security needs.



Benefits:

- Medeco® high security cabinet locks are constructed of durable machined brass and solid steel components.
- Available in either fixed or removable core depending on your specific requirements.
- Available in either deadbolt or spring latch models.
- Unique elevating and rotating tumbler pin system is virtually pick proof.
- Patented Medeco³ keys may only be duplicated by Medeco® or an authorized Medeco® service outlet, and only at your request.
- Medeco® Cabinet Locks can be keyed in with other 60 Series products.
- Locks can be keyed alike, keyed different, or master keyed depending on your specific needs.

Technical Information:

- Five pin models available in either deadbolt or spring latch versions.
- 7/8 inch diameter, surface mount, fixed or removable core available.
- One and two flat models available, key retaining or not.
- Deadbolt fixed core available in non-key retaining.
- Keyed alike, keyed different, or master keyed.

Warranty:

Warranted for two (2) years against manufacturer's defects. See the Medeco® limited warranty for full details.

Finishes:

- 26 satin chrome finish standard.
- Other finishes available, depending on volume.

Applications:

- Medeco® Cabinet Locks are specifically designed for use in metal or wooden drawer and cabinet door applications including:
 - Medical and narcotics
 - Chests and cabinets
 - Showcases
 - Cash carts
 - Drawers

Available Key Technologies:

Mechanical:

– Medeco³

eCylinder:

– Medeco XT

High Security Cabinet Locks

Description	Part Number	Medeco ³	BiLevel	Medeco X4	eCylinder
Cabinet lock with deadbolt, single keypull	62*10555 (P) 62*10555 (S)				
Cabinet lock with deadbolt, double keypull	62*12555 (P) 62*12555 (S)				
Cabinet lock with spring bolt, single keypull	62*11555 (P) 62*11555 (S)				
Removable core cabinet lock with deadbolt, single keypull, less plug	62-70515				
Removable core cabinet lock with spring bolt, single keypull, less plug	62-71515				
Plug for removable plug cabinet lock	66*391XXX (P) 66*391XXX (S)				

Keyed Cabinet Locks are supplied with two keys.

Screws & Caps

Description	Part Number
5 Pin, Pin Hole Covers-Brass (sold in bags of 100)	CP-170021
4 Pin, Pin Hole Covers-Brass (Sold in bags of 100)	CP-170041
3 Pin, Pin Hole Covers-Brass (sold in bags of 100)	CP-170031

SFIC Cabinet Locks

Description	Part Number
Cabinet lock with deadbolt for SFIC cylinder. Works with Medeco X4, Medeco XT SFIC, or Best style SFIC. SFIC ordered separately.	33-07311
Cabinet lock with spring latch for SFIC cylinder. Works with Medeco X4, Medeco XT SFIC, or Best style SFIC. SFIC ordered separately.	33-07321
File Cabinet Lock for SFIC cylinder. Works with Medeco X4, Medeco XT SFIC or Best style SFIC Cylinders	33-07350

**Refer to the eCylinder section for more detail on specific technologies available and pricing. The * in the part number is replaced with:
 T = Medeco³, S = Medeco³ Logic, J = Medeco³ BiLevel, W = Biaxial, V = Medeco Biaxial Logic, K = Medeco KM, N = Medeco X4, C = Medeco Logic,
 “-” = Original, Z = Medeco Original KW Logic, G = Medeco XT ***See key section for surcharges for custom coined cut keys or special stamping requirements.
Note: (P) refers to **Pinned** and **(S)** to **Sub-Pinned** at the end of each part string in the price book.

Showcase Locks

The Medeco® Showcase Lock is specifically designed for installation on sliding cabinet door applications that require extra protection beyond what ordinary showcase locks provide. Complete with a solid steel locking bar and anti-spread housing, the Medeco® Showcase Lock is ideal for securing showcases and cabinets where two sliding surfaces are to be locked. No other lock can be compared with Medeco's proven track record of security and long term reliability. Patented key programs prevent the unauthorized duplication of keys and maintain system integrity. Keyed alike, keyed different, or master keyed, the Medeco® showcase lock is the perfect solution for your showcase security needs.



Benefits:

- Solid machined brass plug, high density zinc die cast housing, and nickel plated steel locking bar
- Unique elevating and rotating tumbler pin system is virtually pick proof
- Patented Medeco³ keys may only be duplicated by Medeco® or an authorized Medeco® service outlet, and only at your request
- Medeco® Showcase Locks are completely serviceable, and can be re-keyed in case of lost or stolen keys

Technical Information:

- Four pin key retaining cylinder is standard
- Self-locking latch, 90 degrees counterclockwise rotation to unlock
- Keyed alike, keyed different, or master keying available

Warranty:

Warranted for two (2) years against manufacturer's defects. See the Medeco® limited warranty for full details.

Finishes:

- 26 satin chrome finish standard.
- Other finishes available, depending on volume.

Applications:

Medeco® Showcase Locks are specifically designed to secure showcase or cabinets where two sliding doors need to be secured, including:

- Jewelry and electronics showcases
- Drug and Medical cabinets
- Furniture
- Laboratory
- Office Credenzas

Available Key Technologies:

Mechanical: **eCylinder:**
 – Medeco³ – Medeco Logic

Showcase Locks

Description	Part Number	Medeco ³	BiLevel	Medeco X4	eCylinder
Showcase Locks	62*31550T (P) 62*31550T (S)				

Plunger Locks

Medeco® Plunger Locks are specifically designed for use in wooden or metal sliding doors. Complete with a spring loaded pop out cylinder, the Medeco® Plunger Lock is ideal for security merchandise showcases, metal cabinets, and laboratory and office furniture. Plunger Locks require no key when locking the device; simply push in on the cylinder to relock. Patented key programs prevent the unauthorized duplication of keys and maintain system integrity. Keyed alike, keyed different, or master keyed, the Medeco® Plunger Lock is the perfect solution for your security needs.



Benefits:

- Medeco® Plunger Locks are constructed of durable machined brass and solid steel components
- Unique elevating and rotating tumbler pin system is virtually pick proof
- Patented Medeco³ keys may only be duplicated by Medeco® or an authorized Medeco® service outlet, and only at your request
- Medeco® Plunger Locks are completely serviceable, and can be re-keyed in case of lost or stolen keys
- Locks can be keyed alike, keyed different, or master keyed depending on your specific needs

Technical Information:

- Four and five pin models available
- Non-key retaining cylinders
- 45 degree clockwise rotation to unlock
- Keyed alike, keyed different or master keyed

Warranty:

Warranted for two (2) years against manufacturer's defects. See the Medeco® limited warranty for full details.

Finishes:

- 26 satin chrome finish standard.
- Other finishes available, depending on volume.

Applications:

- Medeco® Plunger Locks are specifically designed for use in metal or wooden sliding door applications including:
 - Jewelry and other merchandise showcases
 - Metal cabinets
 - Laboratory furniture
 - Office furniture

Available Key Technologies:

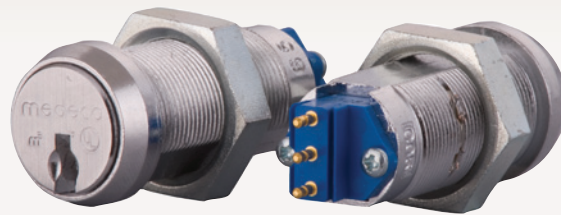
- | | |
|-----------------------|-------------------|
| Mechanical: | eCylinder: |
| – Medeco ³ | – Medeco Logic |

Plunger Locks

Description	Part Number	Medeco ³	BiLevel	Medeco X4	eCylinder
Plunger lock, 5 pin round bolt	62*21557 (P) 62*21557 (S)				
Plunger lock, 5 pin glass mount	62*61557T (P) 62*61557T (S)				
Plunger lock, 4 pin round bolt	62-21554 (P) 62-21554 (S)				

Micro Switch Locks

Medeco's 3/4" diameter, high security switch locks offer a wide range of electrical functions with the physical security and patented key control of a Medeco cylinder. Available in either single or double switch models, Medeco switch locks are ideally suited for applications requiring controlled access to electrically activated systems, including alarms, ATMs, time delay safes, encryption devices, heavy power equipment, control panels and electrically accessed doors and gates. The Medeco® 3/4 inch diameter, high security Switch Lock offer a wide range of electrical functions with the physical security and patented key control of a Medeco® cylinder. The Medeco³ unique design provides triple locking action, making the locks virtually pick proof. All Medeco³ keys and locks are protected under patent, trademark and copyright laws. Medeco® keys may only be duplicated by Medeco® or by an authorized Medeco® dealer, and only at your request.



Benefits:

- All Medeco® cylinders are constructed of durable machined brass components, designed to last the life of your equipment.
- Available in single or double switch models, momentary and maintained positions.
- Silver or gold contacts (for low amperage applications) designed to accept quick connect leads.
- Hardened stainless steel inserts inside the cylinder provide the ultimate defense against drilling and other forms of physical attack.
- Unique elevating and rotating tumbler pin system is virtually pick proof.
- Patented Medeco³ keys may only be duplicated by Medeco® or an authorized Medeco® service outlet, and only at your request.
- Medeco® Switch Locks are completely serviceable, and can be re-keyed in case of lost or stolen keys.
- Locks can be keyed alike, keyed different, or master keyed depending on your specific needs.

Certification:

- UL 437 Listed
- Switch - UL Registered, CSA Certified

Applications:

- Medeco® High Security Switch Locks can be used in any standard 3/4 inch diameter switch lock application and a multitude of markets including:
- Heavy Power Machinery
- Time Delay Safes
- Material Handline Equipment
- Construction Vehicles
- Electrically Accessed Gates
- Cash Control Systems
- Encryption Devices
- Alarms
- Control Panels
- ATMs

Warranty:

Warranted for two (2) years against manufacturer's defects. See the Medeco® limited warranty for full details.

Technical Information:

- Five pin, 3/4 inch double "D" mounting standard.
- Available in either single or double switch models with either silver or gold contacts.
- Rated at 7 amps resistive at 125/250 VAC.
- Contacts designed to accept quick connect leads (AMP connector number 60598-3)

Finishes:

- 26 satin chrome finish standard.
- Other finishes available, depending on volume.

Available Key Technologies:

Mechanical:

– Medeco³

Single Switch Locks

Description	Part Number	Medeco ³	BiLevel	Medeco X4	eCylinder
1 switch, Maintained 1 Keypull	65*2150T-011 (P)				
	65*2150T-011 (S)				
1 switch, Maintained 2 Keypull	65*2150T-012 (P)				
	65*2150T-012 (S)				
1 switch, Momentary1 Keypull	65*2150T-021 (P)				
	65*2150T-021 (S)				

Keys are ordered separately.

Double Switch Locks

Description	Part Number	Medeco ³	BiLevel	Medeco X4	eCylinder
2 position, maintained, 1 keypull	65*2650T-101 (P)				
	65*2650T-101 (S)				
2 position, maintained, 2 keypull	65*2650T-102 (P)				
	65*2650T-102 (S)				
2 position, momentary, 1 keypull	65*2650T-111 (P)				
	65*2650T-111 (S)				
3 position, maintained, 1 keypull	65*2650T-131 (P)				
	65*2650T-131 (S)				
3 position, maintained, 2 keypull	65*2650T-132 (P)				
	65*2650T-132 (S)				
3 position, maintained, 3 keypull	65*2650T-133 (P)				
	65*2650T-133 (S)				

Keys are ordered separately.

Switch Lock Accessories for 65*2150 and 65*2650

Description	Part Number
Double Pole/Double Throw	CP-150082
Gold SubMiniature Snap Action Switch. Double Pole/Double Throw	CP-150102
Sleeve Kit. Includes chrome plated zinc sleeve with rubber grommet, plain washer, 1 pronged washer locks for mounting cam locks in harsh environments.	65-0003
Silver SubMiniature Snap Action Switch. Single Pole-Single or Double Throw	CP-150142
Gold SubMiniature Snap Action Switch. Single Pole-Single or Double Throw	CP-150152
4" Leadwire	CP-270511
6" Leadwire	CP-270521
12" Leadwire	CP-270531
18" Leadwire	CP-270541
24" Leadwire	CP-270551
36" Leadwire	CP-270561

**Refer to the eCylinder section for more detail on specific technologies available and pricing. The * in the part number is replaced with:
 T = Medeco³, S = Medeco³ Logic, J = Medeco³ BiLevel, W = Biaxial, V = Medeco Biaxial Logic, K = Medeco KM, N = Medeco X4, C = Medeco Logic,
 "-." = Original, Z = Medeco Original KW Logic, G = Medeco XT ***See key section for surcharges for custom coined cut keys or special stamping requirements.
Note: (P) refers to **Pinned** and **(S)** to **Sub-Pinned** at the end of each part string in the price book.

Rotary Switch Locks

The Medeco® Rotary Switch Lock is designed for use with most brands of rotary switches, providing maximum versatility in systems requiring multiple switch functions. Switch Locks are available with a variety of key withdrawals at either 45 degrees or 30 degree increments. Positive stops are available to eliminate over-torquing of switch stops. Switch locks use a five pin cylinder to maximize keyed different and master keying capabilities.

Medeco® design and engineering resources are available to assist customers with special functional requirements. The Medeco³ unique design provides triple locking action, making the locks virtually pick proof. All Medeco³ keys and locks are protected under patent, trademark and copyright laws. Medeco³ keys may only be duplicated by Medeco® or by an authorized Medeco® dealer, and only at your request.



Benefits:

- All Medeco cylinders are constructed of durable machined brass components, designed to last the life of your equipment.
- Hardened stainless steel inserts inside the cylinder provide the ultimate defense against drilling and other forms of physical attack.
- Unique elevating and rotating tumbler pin system is virtually pick proof.
- Patented Medeco³ keys may only be duplicated by Medeco® or an authorized Medeco® service outlet, and only at your request.
- Medeco® Switch Locks are completely serviceable, and can be re-keyed in case of lost or stolen keys.
- Locks can be keyed alike, keyed different, or master keyed depending on your specific needs.

Warranty:

Warranted for two (2) years against manufacturer's defects. See the Medeco® limited warranty for full details.

Technical Information:

- Five pin, 3/4 inch double "D" mounting standard.

Finishes:

- 26 satin chrome finish standard.
- Other finishes available, depending on volume.

Certification:

- Switch - UL Registered, CSA Certified

Applications:

- Medeco® Rotary Switch Locks can be used to retrofit many switch lock applications including:
 - Heavy Power Machinery
 - Time Delay Safes
 - Material Handline Equipment
 - Construction Vehicles
 - Electrically Accessed Gates
 - Cash Control Systems
 - Encryption Devices
 - Alarms
 - Control Panels
 - ATMs

Available Key Technologies:

Mechanical:

- Medeco³

Double Switch Rotary

Description	Part Number	Medeco ³	BiLevel	Medeco X4	eCylinder
2 position, 1 keypull A, maintained at B	65*22560T-121 (P)				
	65*22560T-121 (S)				
2 position, 2 keypull A&B, maintained	65*22560T-122 (P)				
	65*22560T-122 (S)				
3 position, 2 keypull A&B, maintained	65*22560T-132 (P)				
	65*22560T-132 (S)				
3 position, 3 keypull A,B&C, maintained	65*22560T-133 (P)				
	65*22560T-133 (S)				
3 position, 2 keypull A&C, maintained at B	65*22560T-134 (P)				
	65*22560T-134 (S)				
2 position, 1 keypull A, momentary at B	65*22560T-221 (P)				
	65*22560T-221 (S)				

Keys ordered separately.

**Refer to the eCylinder section for more detail on specific technologies available and pricing. The * in the part number is replaced with:
T = Medeco³, S = Medeco³ Logic, J = Medeco³ BiLevel, W = Biaxial, V = Medeco Biaxial Logic, K = Medeco KM, N = Medeco X4, C = Medeco Logic,
“-” = Original, Z = Medeco Original KW Logic, G = Medeco XT ***See key section for surcharges for custom coined cut keys or special stamping requirements.
Note: (P) refers to **Pinned** and **(S)** to **Sub-Pinned** at the end of each part string in the price book.