

Go to **www.vtechbabycare.com** to register your product for enhanced warranty support and latest VTech product news.



vtech®

Quick start guide

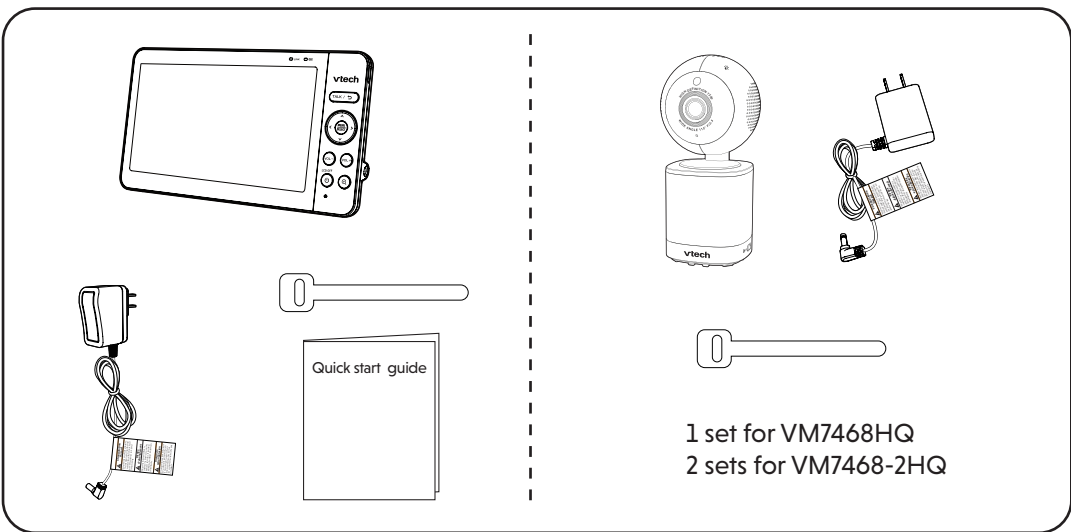
Congratulations

on purchasing your new VTech product.

Before using this baby monitor, please read the **Important safety instructions**.



WHAT'S IN THE BOX



VM7468HQ

VM7468-2HQ

7" High-Quality
Pan & Tilt Video Monitor

For more support information



VM7468HQ



VM7468-2HQ

IMPORTANT SAFETY INSTRUCTIONS

The applied nameplate is located at the bottom of the baby unit base. When in use, basic safety precautions should always be followed to reduce the risk of fire, electric shock and injury, including the following:

- Follow all warnings and instructions marked on the product.
- Adult setup is required.
- CAUTION:** Do not install the baby unit at a height above 6.5 feet (2 meters).
- This product is intended as an aid. It is not a substitute for responsible and proper adult supervision and should not be used as such.
- This product is not intended for use as a medical monitor.
- Do not use this product near water, for example, near to a bath, sink, swimming pool or shower.
- CAUTION:** Use only the internal, non-user replaceable battery fitted to the parent unit. There may be a risk of explosion if a wrong type of battery is used for the parent unit. The battery cannot be subjected to high or low extreme temperature and low air pressure at high altitude during use, storage or transportation. Disposal of batteries in fire or a hot oven, mechanically crushing or cutting the battery can result in an explosion. Subjecting products or batteries to an extremely high temperature environment can result in explosion or leakage of flammable liquids, or gas. Products or batteries subjected to extremely low air pressures may result in explosion or leakage of flammable liquids, or gas. Dispose of used batteries according to the information in **The RBRC seal**.
- Use only the power adapters supplied with this product. Incorrect power adapter polarity or voltage can seriously damage the product.



Power adapter information:

Baby Unit Output: 5V DC 1A
VTech Telecommunications Ltd.
Model: VT05EUS05100

-OR-
Jiangxi Jian Aohai Technology Co., Ltd.

Model: A318-050100W-US2

Parent Unit Output: 5V DC 2A
VTech Telecommunications Ltd.

Model: VT07EUS05200

-OR-
Jiangxi Jian Aohai Technology Co., Ltd.

Model: A938-050200W-US1



Rechargeable battery information:

3.7V 5000mAh, 18.5Wh Lithium-ion battery

Zhuhai Great Power Energy Co., Ltd.

Model: GSP806090-5Ah-3.7V-1S1P

- The power adapter is intended to be correctly oriented in a vertical or floor mount position. The prongs are not designed to hold the plug in place if it is plugged into a ceiling, under-the-table or cabinet outlet.
- For pluggable equipment, the socket-outlet (power adapter) should be installed near the equipment and should be easily accessible.
- Unplug this product from the wall outlet before cleaning. Do not use liquid or aerosol cleaners. Use a damp cloth for cleaning.
- Do not modify the power adapters or replace with other third-party adapters.
- Do not allow anything to rest on the power cords. Do not install this product where the cords may be walked on or damaged.
- The product should only be operated from a power source indicated on the power adapter label or marking. If you are unsure of the type of power supply in your home, consult your dealer or electricity supply provider.
- Do not overload wall outlets or use an extension cord.
- Do not place this product on an unstable table, shelf, stand or other unstable surfaces.
- This product should not be placed in any area where proper ventilation is not provided. Any slots or openings in the back or bottom of this product are provided for ventilation. To protect from overheating, openings must not be blocked

by placing the product on a soft surface such as a bed, sofa or rug. This product should never be placed near or over a radiator or heat source.

- Never insert any objects through any apertures or slots in the product as this can be dangerous and cause damage to the battery or other internal parts. Never spill any liquids on the product.
- To reduce the risk of electric shock, do not disassemble this product, but take it to an authorized service facility. Disassembling or removing parts of the product other than battery replacement via a battery door (if applicable) may expose dangerous voltages or other risks.
- You should test the sound reception every time you turn on the units or move one of the components.
- Periodically examine all components for damage.
- There is a very low risk of privacy loss when using certain electronic devices, such as baby monitors, cordless telephones, etc. **To protect your privacy, make sure the product has never been used before purchase, reset the baby monitor periodically by powering off and then powering on the units, and power off the baby monitor if you are not intending to use it for some time.**
- Children should be supervised to ensure that they do not play with the product.
- The small parts of this monitor can be swallowed by babies or small children. Keep these parts out of reach of children.
- The product is not intended for use by persons (including children) with reduced physical, sensory or mental capabilities, or lack of experience and knowledge, unless they have been given supervision or instruction concerning use of the appliance by a person responsible for their safety.

SAVE THESE INSTRUCTIONS

Cautions

- Use and store the product at a temperature between 32°F (0°C) and 104°F (40°C).
- Mishandling batteries can cause burn, fire or explosion hazards.
- Batteries should not be exposed to excessive heat such as bright sunshine or fire.
- Do not expose the product to extreme cold, heat or direct sunlight. Do not place the product close to a heating source.

- Warning—Strangulation Hazard—Children have STRANGLED in cords. Keep this cord out of the reach of children (more than 3 ft (0.9m) away). Do not remove warning label on the adapter cord.
- Never place the camera unit(s) inside the baby's crib or playpen. Never cover the camera unit(s) or parent unit with anything such as a towel or a blanket.
- Other electronic products can cause interference to your parent unit and baby unit. Try installing your baby unit as far away as possible from the following electronic devices: wireless routers, radios, mobile telephones, intercoms, room monitors, televisions, personal computers, kitchen appliances (e.g. microwave ovens) and cordless telephones.

Precautions for users of implanted cardiac pacemakers

Cardiac pacemakers (applies only to digital cordless devices): Wireless Technology Research, LLC (WTR), an independent research entity, led a multidisciplinary evaluation of the interference between portable wireless devices and implanted cardiac pacemakers. Supported by the U.S. Food and Drug Administration, WTR recommends to physicians that:

Pacemaker patients

- Should keep wireless devices at least six inches from the pacemaker.
- Should NOT place wireless devices directly over the pacemaker, such as in a breast pocket, when it is turned ON. WTR's evaluation did not identify any risk to bystanders with pacemakers from other persons using wireless devices.

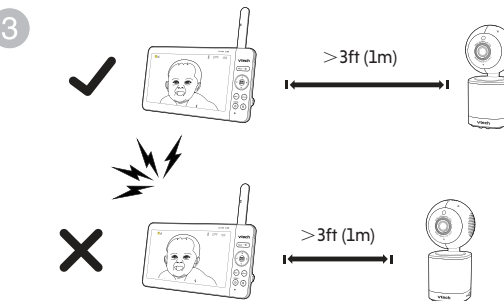
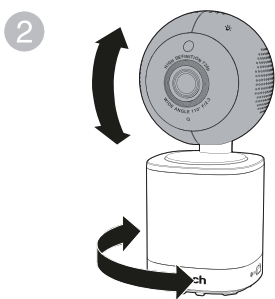
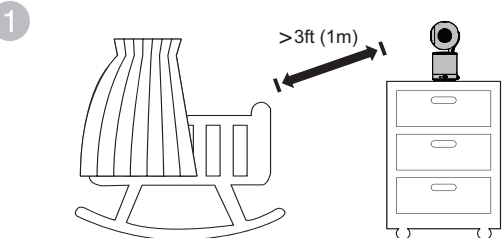
Electromagnetic fields (EMF)

This VTech product complies with all standards regarding electromagnetic fields (EMF). If handled properly and according to the instructions in this user's manual, the product is safe to be used based on scientific evidence available today.

3 POSITIONING THE BABY MONITOR

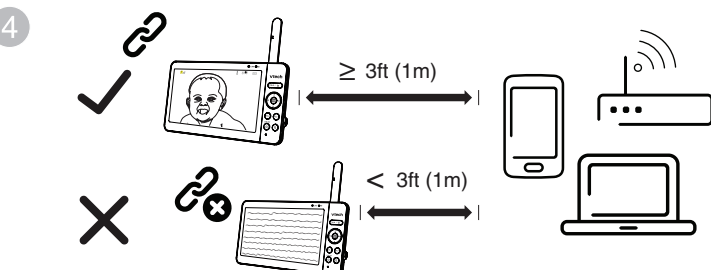
⚠ CAUTION

- Keep the baby unit out of the reach of your baby. Never place or mount the baby unit inside the baby's cot or playpen.



⚠ CAUTION

- For hearing protection, make sure the parent unit is more than 3 feet (1 meter) away from the baby unit. If you hear any feedback noise from the parent unit, move the parent unit further away from the baby unit until the noise stops. You can also press **- VOL** on the parent unit to lower or mute the noise.

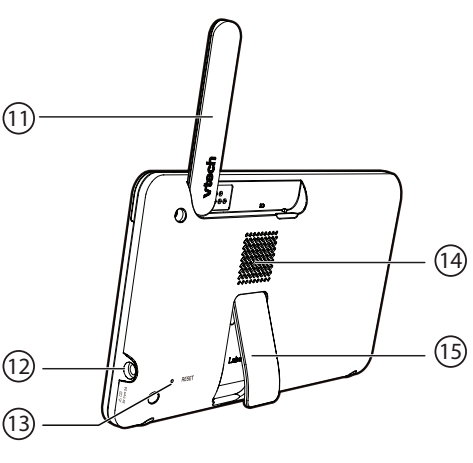
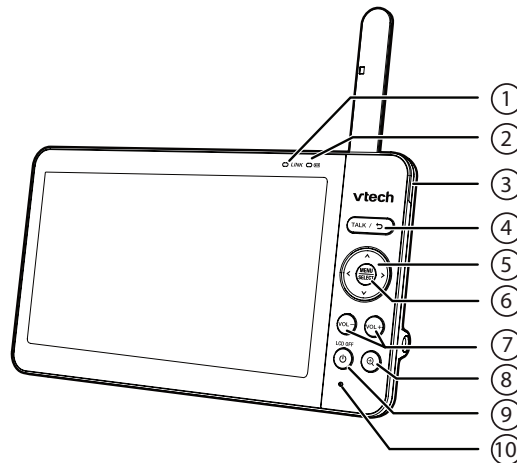


📖 NOTE

- To avoid interference from other electronic devices, place your baby monitor at least 3 feet (1 meter) away from devices such as wireless routers, microwave ovens, mobile phones and computers.



OVERVIEW - PARENT UNIT



1 **LINK LED light**

- On when the parent unit is linked to the baby unit.
- Flashes when the link to the baby unit is lost.

2 **BATTERY LED light**

- On when the parent unit is connected to AC power, and the battery is charging.
- Flashes when the parent unit battery is low and needs to be charged.

3 **3-level sound indicator light**

- The lights indicate different sound levels detected from the baby unit.
- Green light: low sound level.
- Green and amber lights: moderate sound level.
- Green, amber, and red lights: high sound level.

4 **TALK /**

- Press and hold to talk to the baby unit.
- is displayed on screen while the button is pressed.
- While in a sub-menu, press to exit.

5 **Arrow keys**

- Press to navigate leftward, upward, rightward or downward, within the main menu and sub-menus.
- Press to move the baby unit camera leftward, rightward, upward or downward.

6 **MENU/SELECT**

- Press to enter the main menu.
- While in a menu, press to confirm a selection, or save a setting.

7 **-VOL/ VOL +**

- Increase or decrease parent unit volume.

8 **Zoom**

- Press to zoom in/out to different levels.

9 **Power | LCD OFF**

- Press and hold to turn on/off the power.
- Press to turn on/off the LCD screen.

10 **Microphone**

11 **Antenna**

12 **Power jack**

13 **RESET**

- Force reboot the parent unit.

14 **Speaker**

15 **Stand**