

## **USER'S MANUAL**

### **Electronic Organ**

THIS INSTRUCTION BOOKLET CONTAINS **IMPORTANT** SAFETY INFORMATION. PLEASE READ AND KEEP FOR FUTURE REFERENCE

**Please give us a chance to make it right and do better!**

Contact our friendly customer service department for help first.

Replacements for missing or damaged parts will be shipped ASAP!

---

# Contact Us!

## Do NOT return this item.

Contact our friendly customer service department for help first.



## Before You Start

Please read all instructions carefully and keep it for future reference.

### Warning!

Attention: The Product is not suitable for the children under 3 years

Danger: Keep all small parts and packaging materials for this product away from babies and children, otherwise they may pose a choking hazard.



**WARNING:**  
**CHOKING HAZARD**-Small parts.  
Not for children under 3 years.

### General Warnings:

- △ The product must be installed and used under the supervision of an adult.
- △ Read through each step carefully and follow the proper order.
- △ Remove all packaging, separate and count all parts and hardware.
- △ Please ensure that all parts are correctly installed, incorrect installation can lead to a danger.
- △ We recommend that, where possible, all items are assembled near to the area in which they will be placed in use, to avoid moving the product unnecessarily once assembled.
- △ Ensure a secure surface during construction, and place the product always on a flat, steady and stable surface.

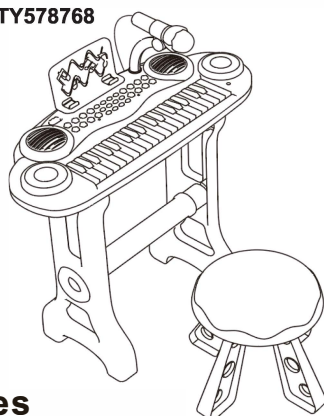
TY578762



TY578769



TY578768



**Distribution  
MP3 Inserting  
line, USB  
power cord**

### **Available in three sizes**

The USB plug can be plugged into the phone's power adapter, computer, charging treasure, etc., saving battery power.

## **Function and Features**

### **① Multiple simulation sounds**

It adopts microcomputer integrated chip, high-quality speaker, high-standard sound, beautiful sound quality, a total of 8 kinds of instrument sounds, 4 kinds of percussion sounds.

### **② Multiple rhythms, adjustable speed**

There are 8 kinds of automatic music rhythms, the speed can be adjusted freely, and the volume can be controlled. It is simple and fun to use.

### **③ Record & Playback**

Ability to record the melody and music you play, and repeat the melody and music you play.

### **④ Fun flash, unique**

When you are playing the song or playing music, the illuminators located near the ends of the keys can flash light, which is very interesting.

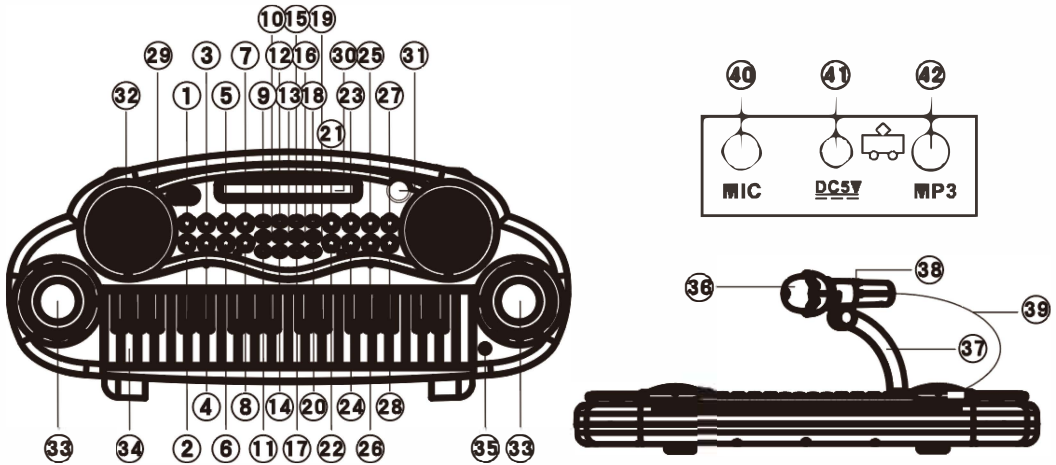
### **⑤ Karaoke microphone**

When you play, you can sing the corresponding songs to the microphone at the same time, singing your happiness.

### **⑥ MP3 connection**

Connect the Mp3 to the host and start the switch to play the songs stored in the MP3.

# Product illustration



No.	Name	No.	Name	No.	Name	No.	Name
①	DISCO	⑫	GUITAR	②③	PLAYBACK	③④	KEYBOARD
②	TWIST	⑬	FLUTE	②④	DEMO	③⑤	HEADPHONE JACK
③	SAMBA	⑭	BASSDRUM	②⑤	TEMPO UP	③⑥	MICROPHONE
④	WALSZ	⑮	ORGAN	②⑥	VOL+/-	③⑦	MICROPHONE HOLDER
⑤	MARCH	⑯	MANDOLIN	②⑦	TEMPO DOWN	③⑧	MICROPHONE SWITCH
⑥	ROCK	⑰	TRIANGLE	②⑧	STOP	③⑨	MICROPHONE CABLE
⑦	JAZZ	⑱	VIOLIN	②⑨	SWITCH	④①	MICROPHONE INTERFACE
⑧	COUNTRY	⑲	TRUMPET	③①	MUSIC RACK SLOT	④②	POWER INTERFACE
⑨	PIANO	⑳	SNAREDRUM	③②	MICROPHONE SLOT		MP3 INTERFACE
⑩	MUSICBOX	㉑	RECORD	③③	ILLUMINATOR		
⑪	TAMBOURINE	㉒	DEMO ALL				

---

# Instructions

## 1. Piano play

- ① Turn the power switch on the left side of the main unit to the right to turn ON, and the system will automatically play a piece of music into the standby state.
- ② You can play your favorite music and songs by pressing the 37 keys on the main unit.

## 2. Percussion

- ① Press the ⑪ ⑭ ⑰ ⑳ keys on the main unit to play the corresponding drum sound.
- ② Press the number ③ button on the main unit to play the samba rhythm sound, and then press the ⑪ ⑭ ⑰ ⑳ keys to play the corresponding samba mixed sound.

## 3. Demonstration of the performance of the music

- ① Press the ㉒ button on the main unit, the system will start play the songs stored in, and it will cycle repeatedly, and the illuminator will flash according to the performance track.
- ② Press the ㉒ button on the main unit, the illuminator will flash in sequence; press the single demo button in the song performance to re-select the song; press the ㉓ and ㉔ keys to adjust the fast and slow rhythm of the performance; press other function keys to exit this function.

## 4. Choice of timbre

When the system works normally, it is a piano sound. To change the sound during the performance, just press the corresponding tone keys of the keys ⑨ ⑩ ⑫ ⑬ ⑮ ⑯ ⑰ ⑱

## 5. How to use the rhythm

When the system works normally, the rhythm is at level 10. If you want to change the rhythm during the performance, just press the ㉕ and ㉖ keys to adjust.

## 6. How to use Record & Playback

Press the ㉗ key to record the melody automatically while playing; press the ㉘ key to play the recorded content, you need to record to repeat the above operation; press the stop key to exit this function.

## 7. How to use the microphone

Plug the microphone's patch cord into the microphone connector and activate the microphone switch, then you can use the microphone to sing.

## 8. How to use MP3

Connect the MP3 cable to the MP3 interface of the host, start the host and MP3 switch, and play the songs stored in the Mp3.

**Note:** After turning on the power for more than 2 minutes without pressing any function keys, the system will automatically turn off after playing a piece of music, enter the standby energy-saving state; press any key to wake up the system.

SPECIFICATIONS COLOURS AND CONTENTS MAY VARY  
FROM ILLUSTRATIONS

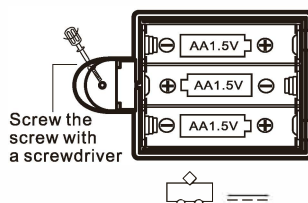
# Installation diagram

## 1. Battery installation

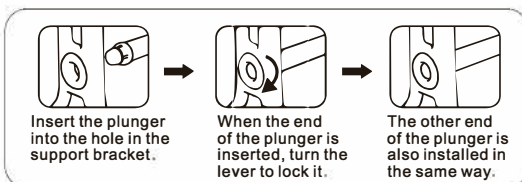
This product is powered by three 1.5V“AA” dry batteries. Place the main unit in reverse, open the battery cover, insert three 1.5V“AA” dry batteries into the battery holder, and then fasten the battery cover.

**Note:** Do not install the wrong polarity of the battery positive and negative! The USB power cord cannot use a power adapter with a rated voltage exceeding 4.5V!

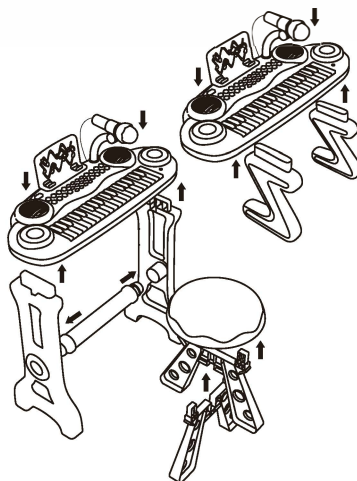
The wires, plugs, casing and other components must be inspected regularly for damage and should be discontinued until damage is repaired.



## 2. Product installation



1. Insert the two legs of the chair correctly into the slots on the underside of the seat cushion in the direction shown on the right.
2. The legs must be in place. Failure to do so may result in danger.
3. Please note that the chair must be properly installed before it can be used.
4. When sitting on a chair, you must confirm that the ground is level.
5. Please check, maintain and reinforce the main components regularly to confirm that the installation is secure. Otherwise, the chair may cause a risk of falling over.



## Needing attention

- ① Piano can only use the recommended batteries.
- ② How to take out and put into the battery: open the battery cover, put in or take out the battery corresponding to the battery polarity.
- ③ The non-rechargeable battery can't be charged.
- ④ Rechargeable batteries can only be charged under adult guardianship.
- ⑤ Only the same type or models of batteries can be identified and is recommended.
- ⑥ Different types of batteries or battery can not mix between the old and the new.
- ⑦ The battery should be installed with correct polarity.
- ⑧ Batteries run out should be removed from the piano.
- ⑨ The power terminal shall not be short-circuited.