

Multiscan® Computer Display

# CPD-G200

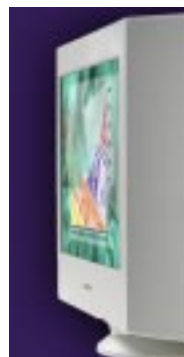
SONY

Virtually-flat FD Trinitron CRT delivers superior image performance and reliability in a compact design well-suited for demanding corporate environments



## Multiscan G200 Computer Display

- **17" (16" viewable) FD Trinitron® CRT** - Virtually-flat, high-resolution screen delivers outstanding image quality with reduced glare
- **0.24-0.25mm Aperture Grille pitch (variable)** - Sets new standard in image clarity and precision
- **Digital Multiscan® technology** - Supports resolutions up to 1600 x 1200 @ 75Hz
- **High-contrast black screen coating** - Produces superior contrast and grayscale performance
- **Elliptical Correction System™** - For consistent, accurate focus across the screen, even in the corners
- **DisplayMouse™ OSD menu control** - Simplifies monitor set-up, troubleshooting and adjustment



**FD Trinitron**  
The definition of definition.

# Specifications

Multiscan® Computer Display

## CPD-G200

<b>Model</b> CPD-G200	<b>Regulation and Standard Compliance</b>
<b>CRT</b> 17" FD Trinitron®	Safety: UL 1950 CSA 22.2 No. 950 EN60950 (TUV, GS mark)
<b>Viewable Image Size</b> 16.0"	Emission/EMI: FCC Class B IC Class B EN55022
<b>Aperture Grille Pitch</b> 0.24mm - 0.25mm (variable)	ELF/VLF: MPR II TCO '99
<b>Screen Treatment</b> High contrast AR coating	X-ray: DHHS DNHW PTB
<b>Horizontal Scan Range</b> 30-96kHz	Ergonomics: ZH1/618, ISO9241-3, -7, -8 TCO '99
<b>Vertical Scan Range</b> 48-120Hz	Designed for: PC99 Windows® 95, 98, NT, 2000 Macintosh® Compatible
<b>Maximum Resolution</b> 1600 x 1200 @ 75Hz	Plug & Play: DDC-1, DDC-2B, DDC-2Bi DMI Compliant
<b>Recommended Resolution</b> 1024 x 768 @ 85Hz	VESA: Generalized Timing Formula (GTF)
<b>Preset Resolutions</b> 640 x 480 @ 60Hz VGA Graphics 640 x 480 @ 85Hz VESA 720 x 400 @ 70Hz VGA Text 800 x 600 @ 85Hz VESA 832 x 624 @ 75Hz Macintosh® 16" 1024 x 768 @ 75Hz VESA 1024 x 768 @ 85Hz VESA 1280 x 1024 @ 75Hz VESA 1280 x 1024 @ 85Hz VESA 1600 x 1200 @ 75Hz VESA	<b>Front Panel Digital Controls</b> Power On/Off Reset DisplayMouse™ Control On-Screen Display (OSD) Brightness Contrast H/V Size H/V Centering H/V Convergence Image Restoration Zoom Raster Rotation Pincushion Pin Balance Keystone Key Balance Color Temperature Moiré Adjust Manual Degauss H/V OSD Position Control Lock Help Menu Multi-Language Select (9 languages)
<b>Color Temperature Presets</b> 5000 Kelvin 6500 - 9300 Kelvin User adjustable	<b>Dimensions (WxHxD)</b> 15.9" x 16.3" x 16.5"
<b>Signal Inputs</b> Analog RGB 0.7Vp-p, 75ohm (typical)	<b>Weight</b> 44.1 lbs
<b>External Sync Signals</b> Separate HD/VD, polarity-free TTL External Composite, polarity-free TTL Sync on Green 0.3 p-p±10%, negative	<b>Supplied Accessories</b> AC Power Cord INF Diskette Mac Adapter User's Manual
<b>Input Connectors</b> Captive 15 pin mini D-sub	<b>Limited Warranty</b> 3 Years - Parts, Labor and CRT
<b>Power Requirements</b> 100-120/220-240V AC; 50-60Hz	
<b>Power Management</b> International Energy Star, NUTEK, and VESA DPMS Compliant, TCO'99 Operation: <120 watts Suspend: <15 watts (maximum) Active Off: <3 watt (maximum) Power Off: 0 watt	
<b>Operating Temperature</b> 50°F-104°F (10°C-40°C)	
<b>Operating Humidity</b> 10%-80% (Non-Condensing)	

The Multiscan G200 17" (16.0" VIS) display is ideal for the demanding corporate professional who requires exceptional image performance without sacrificing value or reliability. It's perfect for everything from spreadsheets to finely detailed graphic presentations.

The virtually flat, high-resolution FD Trinitron® CRT—with a variable 0.24 - 0.25mm aperture grille pitch—delivers superior image clarity and truer, brighter colors. And, with Sony's Enhanced Elliptical Correction System technology, the display's clarity and color are consistent from corner to corner.

To provide superior contrast and grayscale performance, the CPD-G200 features a high-contrast black coating. This coating, coupled with the display's vertically flat screen, also helps cut glare and washout caused by ambient light. And that reduces eyestrain.

Sony's DisplayMouse™ menu control makes this premier corporate display one of the easiest to set up, adjust and—in the unlikely event that there's a problem—troubleshoot. Users can quickly take advantage of everything the CPD-G200 has to offer.

# SONY

Sony Electronics Inc.  
Information Technologies Marketing Division  
3300 Zanker Road, San Jose, California 95134  
For more information: 1.800.352.SONY  
Web address: <http://www.sony.com/displays>

Designed for



Computer Interface: The computer industry lacks standards, and therefore, there are a multitude of varying software packages and add-on hardware options. This display is not manufactured to any specific software, and Sony does not and cannot make any warranty or representation with respect to the performance of this product with any particular software packages and/or non-Sony add-on hardware option except those mentioned in this document. Sony hereby disclaims any representations or warranty that this product is compatible with any combination of non-Sony products you may choose to connect. While Sony representatives or Sony authorized dealers may be able to assist you and may make recommendations, they are NOT authorized to vary or waive this disclaimer. Purchasers must determine for themselves the suitability and compatibility of the hardware and software in each and every particular instance.

©1999 Sony Electronics Inc. All rights reserved. Reproduction in whole or in part without written permission is prohibited. Sony, the Sony logo, displays by sony, Multiscan, Trinitron, Digital Multiscan, ASC, Super Fine Pitch, are trademarks of Sony. Microsoft, the Windows Logo are registered trademarks of Microsoft Corporation. Mac and Macintosh are trademarks of Apple Inc. Features and specifications are subject to change without notice. Non-metric weights and measurements are approximate.

This monitor is Energy Star Compliant when used with a computer equipped with VESA Display Power Management Signaling (DPMS). As an International Energy Star Partner, Sony Corporation has determined that this product meets the International Energy Star Program for energy efficiency. The Energy Star emblem does not represent EPA endorsement of any product or service. Screen images are simulated.

D183  
Printed in U.S.A. 9/99

**This file has been downloaded from:**

[www.UsersManualGuide.com](http://www.UsersManualGuide.com)

User Manual and User Guide for many equipments like mobile phones, photo cameras, mother board, monitors, software, tv, dvd, and others..

Manual users, user manuals, user guide manual, owners manual, instruction manual, manual owner, manual owner's, manual guide, manual operation, operating manual, user's manual, operating instructions, manual operators, manual operator, manual product, documentation manual, user maintenance, brochure, user reference, pdf manual