

SIMAGIC

TB-1 | Quick Guide

1. List of Accessories

1.1 List of Standard Accessories

- USB data cable X 1
- Elastomer kit X 1
- Button Head Socket Cap Screw M6-14 X 4
- Roll in T-Nut with Ball Spring M6-40 X 4
- Allen Key (2mm/4mm/6mm) X 3

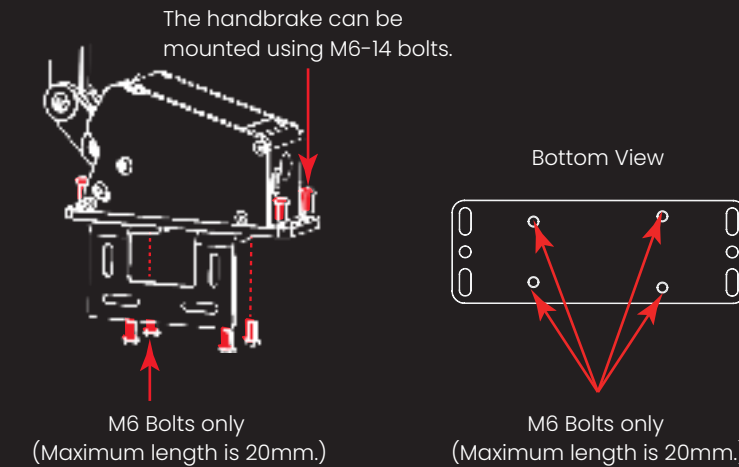
1.2 List of Optional Accessories

- P-LOK:
- Multifunctional L-Shaped Bracket X 1
 - Button Head Socket Cap Screw M6-14 X 4
 - Countersunk Head Screw M6-14 X 4
 - Roll in T-Nut with Ball Spring M6-40 X 4
 - Allen Key (4mm) X 1

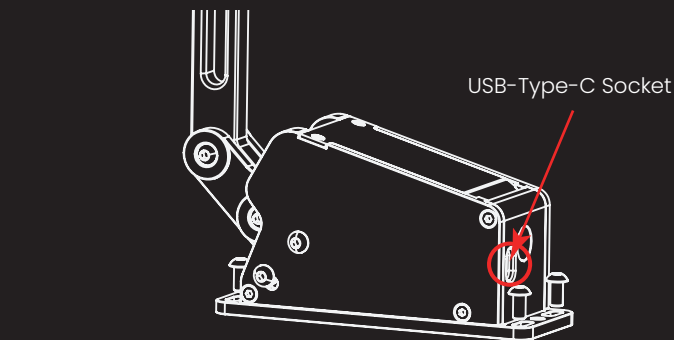
2. Installation Method

2.1 Product Assembly

- ① Mounting the handbrake.
(Note: The L-Shaped mounting plate can be purchased separately.)



- ② Product connection ports.

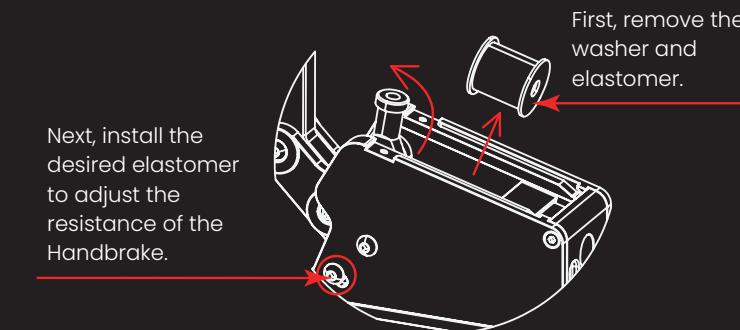


2.2 Elastomer Swap

- ① Remove the front plate.

- ② Remove the bolt.
(Note: Make sure the power is OFF during the replacement.)

- ③ Swap the elastomer.



2.3 Handle Adjustment

- 2.3.1 Adjust the lever.

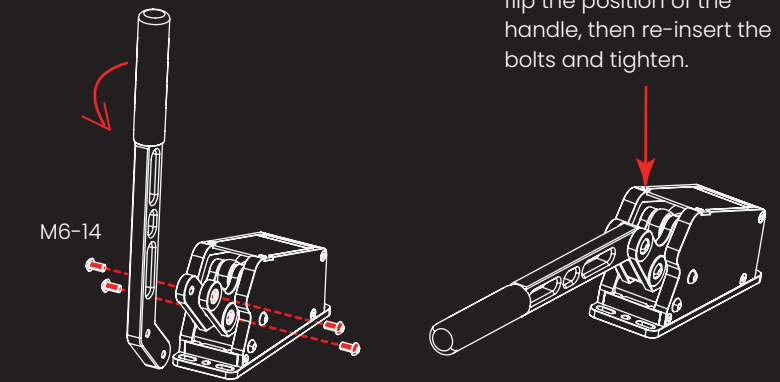
- Fine-tune the angle of the handle.

- 2.3.2 Switching lever position

- ① Remove the lever.

- ② Flip the lever.

- Remove the M6-14 bolts, flip the position of the handle, then re-insert the bolts and tighten.



Software & applications



Install SimPro Manager
on PC to complete setup



Product Tutorial
(Scan the QR code to view more)

Note: SimPro Manager required to complete setup