

# **VEVOR®**

**TOUGH TOOLS, HALF PRICE**

Technical Support and E-Warranty Certificate

[www.vevor.com/support](http://www.vevor.com/support)

## **LIFT TABLE CART USER MANUAL**

**MODEL: JZ-DD150**

We continue to be committed to provide you tools with competitive price.

"Save Half", "Half Price" or any other similar expressions used by us only represents an estimate of savings you might benefit from buying certain tools with us compared to the major top brands and does not necessarily mean to cover all categories of tools offered by us. You are kindly reminded to verify carefully when you are placing an order with us if you are actually Saving Half in comparison with the top major brands.

MODEL:JZ-DD150



**Note:** The actual product you receive determines its look.

### NEED HELP? CONTACT US!

Have product questions? Need technical support? Please feel free to contact us:

**Technical Support and E-Warranty Certificate**  
**[www.vevor.com/support](http://www.vevor.com/support)**

This is the original instruction, please read all manual instructions carefully before operating. VEVOR reserves a clear interpretation of our user manual. The appearance of the product shall be subject to the product you received. Please forgive us that we won't inform you again if there are any technology or software updates on our product.

**Note: Owner and Operator MUST read and understand this operating instructions before use this table truck**

## SPECIFICATIONS

<b>Model</b>	<b>JZ-DD150</b>
<b>Rated Voltage</b>	□230V/50Hz □120V/60Hz
<b>Capacity</b>	150kg
<b>Maximum Height (Casters not included)</b>	710mm
<b>Minimum Height (Casters not included)</b>	200mm
<b>Table Dimension</b>	760x440mm
<b>No-Load Speed</b>	10mm/s
<b>Motor Power / Voltage</b>	72W / 24V
<b>Colour</b>	Black

Remark: Specifications will be changed without prior notice.



### **WARNING!**

1. Do not touch the power plug with wet hands;
2. Do not damage the power plug and power cord;
3. Do not use it if the power plug or power cord is damaged;
4. Do not pull the power cord to unplug the power plug;
5. Do not use loose sockets;
6. Please do not disassemble the product without authorization so as to avoid failure and affect the use;
7. Do not place flammable and explosive materials, such as fuel spray;
8. It is necessary to use an independent power socket with a grounding wire and ensure that the power circuit is reliably grounded;

9. When maintaining and cleaning the machine, the power plug must be unplugged;
10. Do not allow children to operate alone: the electric lift platform may pose a safety hazard to children, so please ensure that children use it under adult guidance or lower the lift platform to the lowest height when leaving;
11. Avoid use in the humid environment: do not use an electric lifting platform in a humid environment to avoid electric shock or equipment failure;
12. Do not use the electric lifting platform as a toy: the electric lifting platform is not a toy; do not use it for unintended purposes so as to avoid equipment damage or personal injury;
13. Emergency measures: In case of equipment failure, abnormal noise, and other emergency situations, please stop using immediately, disconnect the power supply, and seek professional help.

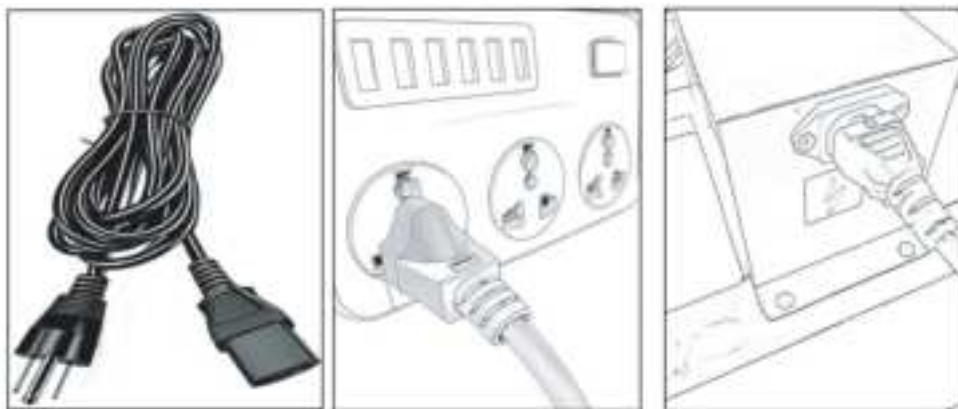
## PRECAUTIONS FOR USE

1. **Load limitation:** the load of the electric lifting platform should be strictly controlled within the rated range to avoid overload.  
At the same time, ensure that it is used on a flat ground to avoid partial load causing the equipment to tip over.
2. **Smooth start and stop:** The electric lifting platform should be kept stable when starting and stopping, to avoid sudden braking and sudden start. Observe the running status of the device at any time during operation. If there is an anomaly, stop the machine immediately for inspection.
3. **Prevent collision:** During the operation of the electric lifting platform, the surrounding environment should be ensured to avoid collision with walls, obstacles, etc. When approaching the target height, slow down in advance to ensure a smooth stop.
4. **Regular maintenance:** After the electric lifting platform is used for a period of time, regular maintenance should be carried out to check the damage of the worn parts and replace the damaged parts in time to ensure the normal operation of the equipment.

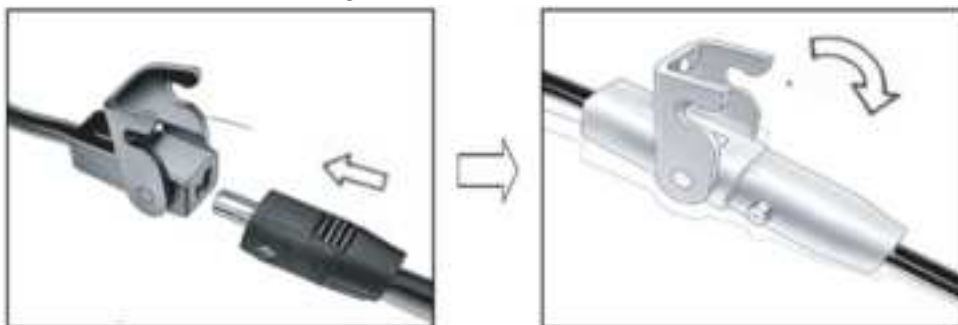
5. **Safety training:** Safety training for electric lifting platform operators to understand the operating principles and precautions of the equipment to master the correct operation methods.
6. **Distress measures:** In the event of an emergency, correct emergency measures should be taken, such as distress stop, emergency power cut off, etc., to ensure the safety of personnel and equipment.
7. **Remote battery:** The remote control battery needs to be purchased by itself. The applicable model is 23A/12V, and the size is 28 mm X 10 mm.

## Operation introduction

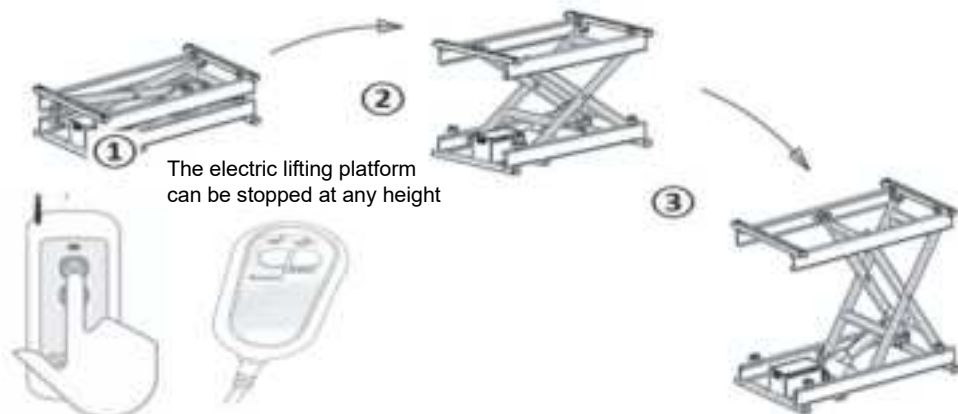
1. Connect power cables as shown in the figure



Cable remote control wiring is shown below



2.Press the up/down key. Electric lift platform will run



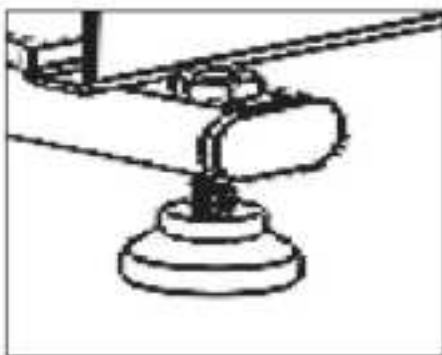
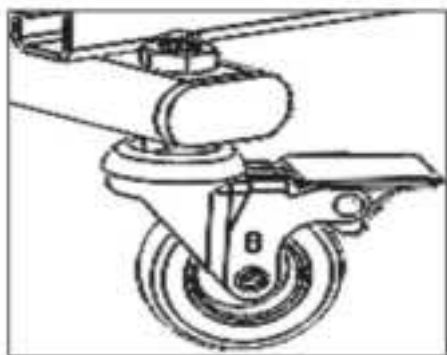
Remote control

wired controller

### NOTICE:

- (1) . Remote control has three buttons: up, down, stop, click operation.
- (2) . The wired remote control has only 2 buttons: rise and fall, press and hold the motor to move, and release the motor to stop.

3.Accessories have two choices of casters and foot cups, as shown in the figure below, and can be fixed with nuts.




# Product Description

parts list	
Lifting platform body	1
power cord	1
Wireless remote control (without battery)	1
Wired remote control	1
castor	4
Foot pad	4
nut	4
specification	1
Battery specifications required: 23A / 12V , Number : 1	

Battery Size figure:



	<p>This product is subject to the provision of European Directive 2012/19/EC. The symbol showing a wheellie bin crossed through indicates that the product requires separate refuse collection in the European Union. This applies to the product and all accessories marked with this symbol. Products marked as such may not be discarded with normal domestic waste, but must be taken to a collection point for recycling electrical and electronic devices</p>
--	---

**Manufacturer:** Shanghaimuxinmuyeyouxiangongsi

**Address:** Shuangchenglu 803nong11hao1602A-1609shi, baoshanqu,  
shanghai 200000 CN.

**Imported to AUS:** SIHAO PTY LTD. 1 ROKEVA STREETEASTWOOD NSW  
2122 Australia

**Imported to USA:** Sanven Technology Ltd. Suite 250, 9166 Anaheim Place,  
Rancho Cucamonga, CA 91730

<b>EC</b>	<b>REP</b>
-----------	------------

E-CrossStu GmbH  
Mainzer Landstr.69, 60329 Frankfurt am Main.

<b>UK</b>	<b>REP</b>
-----------	------------

YH CONSULTING LIMITED.  
C/O YH Consulting Limited Office 147, Centurion House,  
London Road, Staines-upon-Thames, Surrey, TW18 4AX

**VEVOR®**  
TOUGH TOOLS, HALF PRICE

**Technical Support and E-Warranty Certificate**

**[www.vevor.com/support](http://www.vevor.com/support)**