



RECIPE BOOK NOT INCLUDED

804107672

Please read this manual carefully before operating your unit and retain for future reference.

## IMPORTANT SAFETY INSTRUCTIONS For Household Use Only

WHEN USING ELECTRICAL APPLIANCES, BASIC SAFETY PRECAUTIONS SHOULD ALWAYS BE FOLLOWED, INCLUDING THE FOLLOWING:

READ ALL INSTRUCTIONS BEFORE USING YOUR NUTRI NINJA® PRO.

### POLARIZED PLUG

**⚠ WARNING:** To reduce the risk of electric shock, this appliance has a polarized plug (one blade is wider than the other). This plug will fit into a polarized outlet only one way. If the plug does not fit fully into the outlet, reverse the plug. If it still does not fit, contact a qualified electrician to install the proper outlet. **DO NOT modify the plug in any way.**

**⚠ WARNING:** Extension cords are not recommended for use with this product.

**⚠ WARNING:** TO REDUCE THE RISK OF FIRE, ELECTRIC SHOCK OR INJURY:

- ⚠ CAUTION:** Blade assembly is sharp, handle with care. When handling the blade assembly, always hold by the base of the blade assembly.
- ⚠ CAUTION:** DO NOT blend hot liquids.
- ⚠ CAUTION:** DO NOT process dry ingredients without adding liquid to the cup. This product is not intended for dry blending.
- ⚠ CAUTION:** DO NOT use stainless steel cup accessory model XSKDWSS24 with blender.
- ⚠ CAUTION:** We do not recommend grinding in any of our Nutri Ninja® Cups.
- To protect against electrical shock, do not submerge the appliance or allow the power cord to come into contact with water or any other liquid.
- DO NOT** allow young children to operate the appliance or use as a toy. Close supervision is necessary when any appliance is used by or near children.
- Never leave an appliance unattended when in use.
- Turn the appliance Off and remove the power cord from the electrical outlet when not in use, before assembling or disassembling parts and before cleaning. To unplug, grasp the plug and pull from the electrical outlet. Never pull from the power cord.
- DO NOT** abuse the power cord. Never carry the appliance by the power cord or yank it to disconnect from electrical outlet; instead grasp the plug and pull to disconnect.

### TECHNICAL SPECIFICATIONS

Voltage: 120V., 60Hz.  
Nutri Ninja® Cup Capacity: 24 ounces (3 cups, 710 ml)  
18 ounces (2.25 cups, 530 ml)

- DO NOT** operate any appliance with a damaged cord or plug, or after the appliance malfunctions, has been dropped or damaged in any manner.
- DO NOT** let the power cord hang over the edge of table or counter or touch hot surfaces such as the stove.
- Always use appliance on a dry, level surface.
- Keep hands, hair, clothing, as well as utensils out of container while processing to reduce the risk of severe injury to persons or damage to the appliance. A scraper may be used but only when the appliance is not running.
- Avoid contact with moving parts.
- DO NOT** attempt to sharpen blades.
- DO NOT** use the appliance if blade assembly is bent or damaged.
- To reduce risk of injury, never place the blade assembly on the base without the proper attachment.
- DO NOT** operate this appliance on or near any hot surfaces (such as gas or electric burner or in a heated oven).
- The use of attachments or accessories including canning jars, not recommended by the manufacturer may result in fire, electric shock or personal injury.
- DO NOT** remove the cup from the motor base while the appliance is running.
- To reduce the risk of injury, **NEVER** operate the appliance without the blade assembly in place; **DO NOT** try to defeat the interlock mechanism; make sure that the attachment is properly installed before operating the appliance.
- DO NOT** expose cups to extreme temperature changes.
- DO NOT** overfill.
- DO NOT** operate the appliance empty.
- If the appliance overheats, a thermal switch will become activated and shut off the motor. To reset, unplug the appliance and let it cool down for approximately 30 minutes before using again.
- THIS PRODUCT IS INTENDED FOR HOUSEHOLD USE ONLY.** Do not use this appliance for anything other than its intended use. Do not use outdoors.
- Appliance accessories are not intended to be used in the microwave. Do not place the cup or the lid in the microwave as it may result in damage to the accessories.

## SAVE THESE INSTRUCTIONS

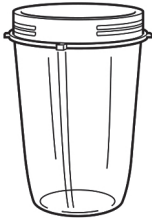
## Getting To Know Your Nutri Ninja® Pro



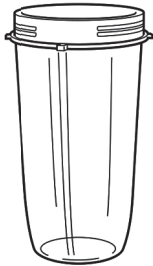
a



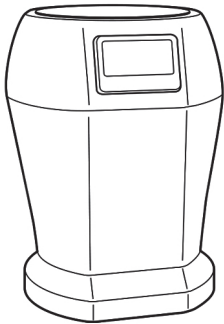
b



c



d

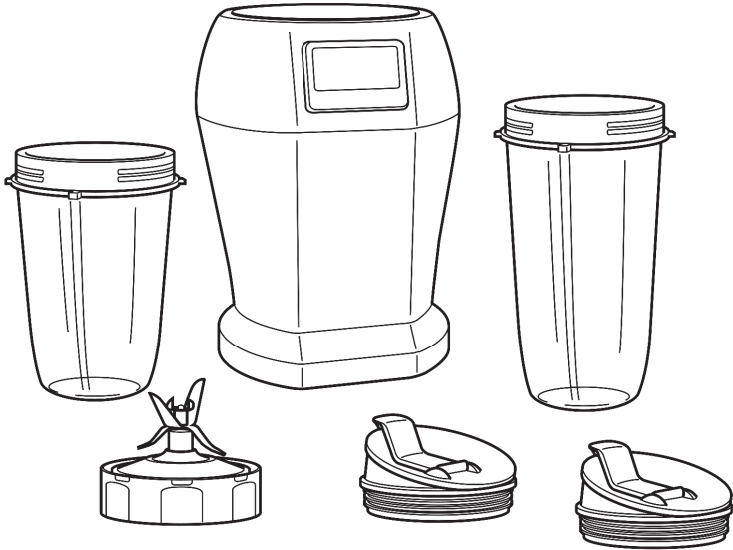


e

- a** Blade Assembly
- b** Sip & Seal® Lid
- c** 18 oz. Cup
- d** 24 oz. Cup
- e** Motor Base
- f** Power Cord (not shown)

Accessory type and quantity may vary depending on the model.

The Nutri Ninja® Pro is a high powered innovative tool with a compact design and outstanding performance. It is perfect for ice crushing, chopping, blending, and nutrient and vitamin extraction\*. Blend and go with the convenient Sip & Seal® lids, create delicious drinks to get you out the door quickly! Best results are achieved when you Pulse.



### FEATURES:

- Nutrient & Vitamin Extraction\*
- 900 Watt Motor
- Personalized, healthy drinks and juices on the go
- Sip & Seal lids for drinks on the go
- BPA-free Cups
- Cord storage

\* Extract a Drink Containing Vitamins & Nutrients From Fruits & Veggies

### Before First Use

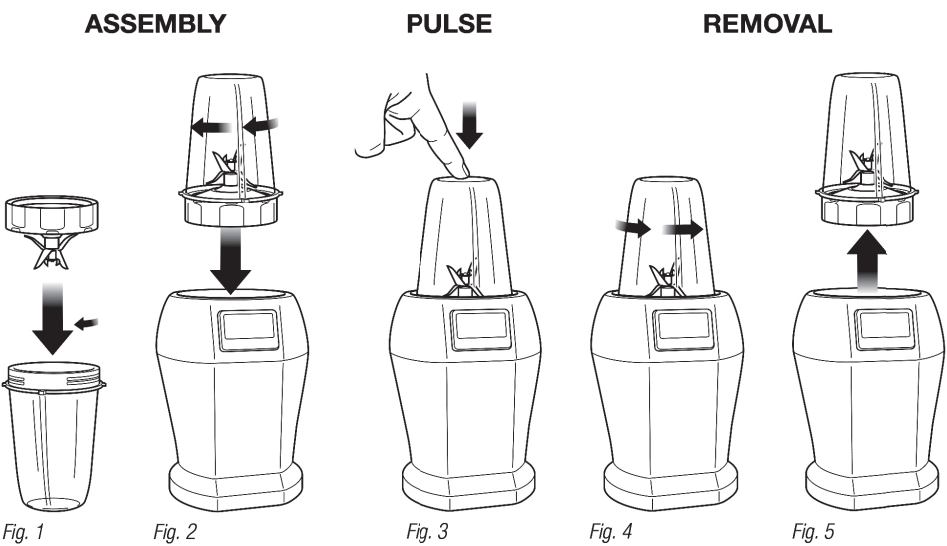
PLEASE KEEP THESE IMPORTANT SAFEGUARDS IN MIND WHEN USING THE APPLIANCE:

- ⚠ WARNING:** Never leave the appliance unattended while in use.
- ⚠ CAUTION:** Blades are sharp! Use extreme caution when handling the blade assembly. Always hold them by the base of the blade assembly.
- ⚠ CAUTION:** Do not blend hot liquids.
- ⚠ CAUTION:** Never attempt to remove the cup while the appliance is still running.
- IMPORTANT:** Never run the appliance empty.
- IMPORTANT:** Attachments are interchangeable.
- IMPORTANT:** Appliance accessories are not intended to be used in the microwave. Do not place the cup or the lid in the microwave as it may result in damage to the accessories.

- ⚠ CAUTION:** Blades are sharp! Use extreme caution when handling the blade assembly. Always hold them by the base of the blade assembly.
- 1** Remove all packaging material and labels from the appliance.
- 2** Wash the lids, cups and attachments in warm, soapy water with a soft cloth.
- ⚠ CAUTION:** Handle the blade assembly with care when washing, as the blades are very sharp.
- 3** Rinse and dry thoroughly.
- 4** Cups, lids and attachments are all dishwasher safe. It is recommended that the lids and attachments be placed on the top rack. Ensure that the attachments are removed from the cups before placing in the dishwasher.
- 5** Wipe the motor base clean with a damp cloth.

Use

- ⚠ **WARNING:** Never leave the appliance unattended while in use.
- ⚠ **CAUTION:** Handle the blade assembly with care, as the blades are very sharp.
- ⚠ **CAUTION:** DO NOT BLEND HOT LIQUIDS.
- ⚠ **CAUTION:** Do not use stainless steel cup accessory model XSKDWSS24 with blender.
- IMPORTANT: Make sure that the motor base is plugged in for use



💡 For best results, use short “PULSES”!

- 1

Place the motor base on a clean, dry, level surface such as a counter or table top.
- 2

Add ingredients to the cup.
- 3

Place the blade onto the cup and twist it on tightly until you have a good seal. **(Fig. 1)**
- 4

Turn the cup upside down and place it onto the motor base, aligning the tabs on the cup with the motor base. Turn it clockwise, the unit is ready for use.**(Fig. 2)**
- 5

Press down on the top of the cup in short intervals to activate. **(Fig. 3)**
- 6

When you have reached your desired consistency, stop the appliance by removing your hand from the cup. Wait for the motor to stop running. Then turn the cup counterclockwise **(Fig. 4)** and pull straight up to remove. **(Fig. 5)**
- 7

Turn the cup upright and remove the Blade Assembly by twisting the blade assembly counterclockwise. Be sure to store the Blade Assembly attached to an empty cup when not in use.
- 8

Place the Sip & Seal® lid onto the cup, twist to seal and enjoy!
- 9

Make sure that the motor base is unplugged when not in use.

**NOTE:** Do not overfill! To avoid spilling, do not add ingredients past the “Max” fill line.

Suggested Uses

PURPOSE / FUNCTION	SUGGESTED CUP	TYPE OF FOOD
Chopping / Pulsing	18 oz. 24 oz.	Salsa Leafy Herbs
Mixing	18 oz. 24 oz.	Batters Dips
Sauces	18 oz. 24 oz.	Vinaigrettes Salad Dressings Simple Sauces
Frozen Blending	18 oz. 24 oz.	Ice Frozen Fruit Ice Cream
Nutrient Juices/Smoothies	18 oz. 24 oz.	Fruits Vegetables Leafy Greens

⚠ **CAUTION:** DO NOT process dry ingredients without adding liquid to the cup. This product is not intended for dry blending.

Care & Maintenance

HOW TO CLEAN

- ⚠ **CAUTION:** Make sure that the motor base is unplugged from the power source before inserting or removing any attachment and before cleaning.
- ⚠ **CAUTION:** DO NOT immerse the motor base into water or any other liquid.
- ⚠ **CAUTION:** Handle the blade assemblies with care, as the blades are very sharp.
- 1

Separate/remove all parts from each other.
- 2

Clean the motor base with a damp cloth and wipe dry.
- 3

Place the cups, lids and blades in the top rack of the dishwasher.
- OR
- 4

Carefully hand wash the lids, Nutri Ninja® cups and blade assembly in warm, soapy water with a soft cloth. If the appliance needs servicing, contact a service center.

HOW TO STORE

- 1

Store the Nutri Ninja Pro upright. Secure the power cord underneath the base by wrapping the cord around the cord wrap. Do not place anything on top. Store the cups and the rest of the attachments along side the appliance where they will not be damaged and won't cause a hazard.

RESETTING THE MOTOR THERMOSTAT

The Nutri Ninja Pro features a unique safety system which prevents damage to the unit's motor and drive system should you inadvertently overload your appliance. If the appliance is being overloaded, the motor will stop. To reset the appliance, follow the resetting procedure below:

1

Unplug the appliance from the electrical outlet.

2

Remove and empty the cup and ensure that no food is jamming the cutting blades.

3

Allow the appliance to cool for approximately 30 minutes.

4

Re-install the cup onto the base and re-plug the appliance into the electrical outlet.

5

Proceed to use the appliance as before while making sure not to exceed the recommended maximum capacities.

Troubleshooting Guide

PROBLEMS	POSSIBLE REASONS & SOLUTIONS
Motor doesn't start or attachment doesn't rotate.	For the cups, make sure that the tabs are seated in the slots and turned clockwise.
Food is unevenly chopped.	Either you are chopping too much food at once, or you are not pulsing properly. Reduce the amount of food in the cup.
Food is too finely chopped or too watery.	The food has been over processed. Use short pulses for best results. Press down on the cup in short intervals.
Cup is leaking.	Make sure that your lid or blade assembly is properly assembled to the cup. Leaking may occur if it is misaligned when twisted onto the cup. Turn the lid tightly clockwise.
Unit doesn't turn on.	Make sure the unit is plugged in. Rotate and press down on the cup to turn the unit on. Make sure the blade assembly is properly assembled to the cup and that it is not misaligned.
Unit doesn't turn off.	Unplug the power cord from the electrical outlet and call customer service for support.
Doesn't mix well.	Pulse ingredients for best results. Press down on the cup in short intervals for even blending and chopping. For frozen ingredients, pulse in short intervals of 2-5 seconds and repeat.
Lid/blade assembly will not properly align to the cup.	Set the cup on a level surface. Place the lid or blade assembly on top of the cup and align the threads so that the lid/blades sit flat on the cup. Twist clockwise so that the lid/blades evenly align to the cup until you have a tight seal.

NOTE:

In order to ensure the highest possible standard for refurbished items, all units are thoroughly inspected as part of the process.

For this item, water may be used during the refurbishing process and so; you may notice some condensation in the water reservoir.

It is recommended to rinse the water reservoir with fresh water prior to its first use.

Euro-Pro Operating LLC

Euro-Pro, Ninja, Nutri Ninja and Sip & Seal are registered trademarks of Euro-Pro Operating LLC. Illustrations may differ from actual product. We are constantly striving to improve our products, therefore the specifications contained herein are subject to change without notice.