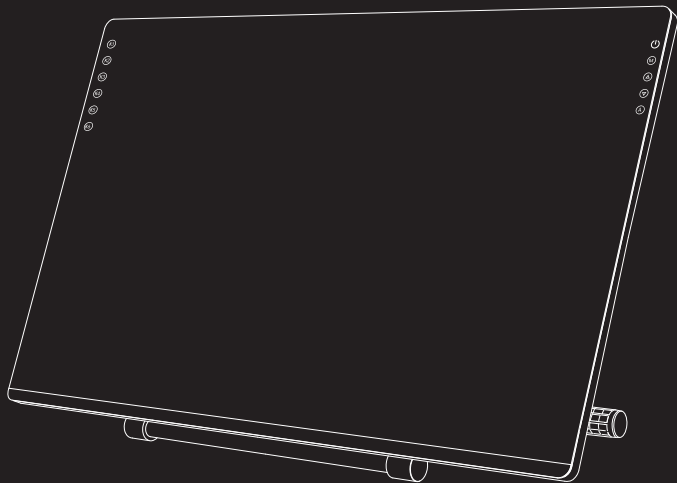


VEIKK



User Manual

VK2200 PEN DISPLAY

Precautions

1. Please read this manual carefully before using, and keep it well for future reference.
2. Before cleaning the display please unplug the USB cable and wipe with a soft damp cloth, don't use any kind of detergents.
3. Please don't place the display near water sources such as bathtub, washbasin, sinks, washing machine, damp basement, swimming pool, etc.
4. Do not place this display on an unstable surface.
5. Do not step or place heavy objects on this display as this could damage it.
6. Do not place the display a height for children reaching easily in order to avoid danger. Make sure that a child does not put the pen or pen tip in his/her mouth.
7. Do not place the display and digital pen close to the magnetic field.
8. To protect your display, please switch off the power when it is not in use. During blackouts or not using for long time, please unplug the display from the socket.
9. Don't overload the socket or lengthen the power wire, which may lead to electric shocks.
10. If the display has a breakdown, do not open the main case and try to repair it by yourself. Please ask for a service for proper repair and maintenance.
11. When the following situations occur, please unplug the power adapter and you may need a service for full repair and maintenance:

- A. The power wire or plug is damaged or worn out;
 - B. There is liquid splashed inside of the display;
 - C. The display has fallen or the LCD is broken;
 - D. When obvious abnormalities occur to the display.
12. While getting the components replaced, you are supposed to guarantee that the repairman is using the substitute components specified by the manufacturer. Unauthorized component replacement might cause fire, electric shocks or other dangers.

Catalog

1.Product Overview	1
1.1 About VK2200	1
1.2 Product and Accessories.....	1
1.2.1 Product overview	1
1.2.2 Adjustment stand.....	2
1.2.3 Pen (P20C).....	3
1.2.4 Other accessories	3
1.3 Specifications	4
1.4 Display Connection	5
2. Driver Installation	6
2.1 System Requirement.....	6
2.2 Driver Installation.....	6
3. Monitor Mapping.....	8
4. Driver setting	10
4.1 Pen	10
4.1.1 Pen Function Settings	10
4.1.2 Current Pen Pressure.....	11
4.1.3 Click Sensitivity	11
4.2 Mapping.....	12
4.2.1 Monitor Setting	12
4.2.2 Rotate	13
4.2.3 Screen Mapping	14
4.2.4 Calibration	15
4.2.5 Enable Windows Ink Function	16
4.3 Functions.....	17
4.3.1 Shortcut Keys Setting.....	17
4.4 About Us.....	21
5. FAQ.....	23

1 Product Overview

1.1 About VK2200

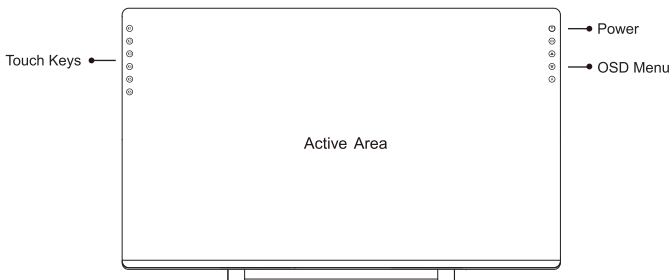
Thanks so much for choosing VEIKK VK2200 Pen Display.

This is a new generation of desktop-level professional drawing display, which adopting full-laminated technology, seamlessly combines the glass and the screen, to create a distraction-free working environment, you can naturally drawing as you would with the real pen and paper, brings you a real shock experience.

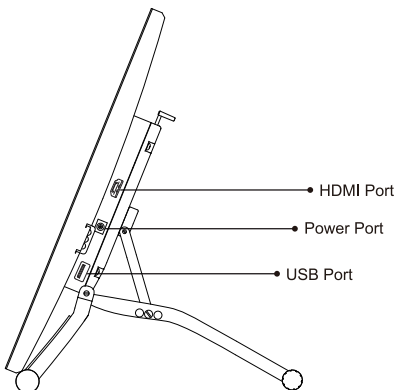
To give you a better understanding and using of your VK2200 display, please read this user manual carefully. The user manual only shows the information under Windows, unless otherwise specified, this information applies to both Windows and Mac systems.

1.2 Product and Accessories

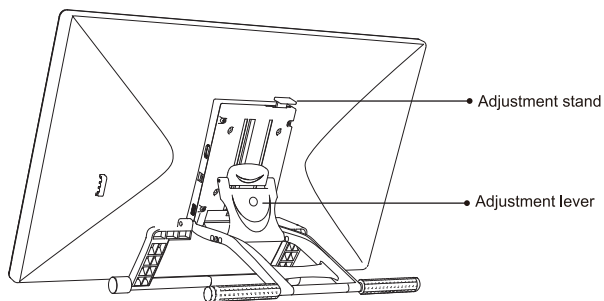
1.2.1 Product overview



Note: OSD Menu start working after 3-5 seconds of touch.

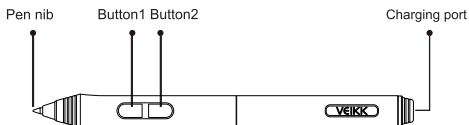


1.2.2 Adjustment stand



Adjusting stand Lever: to adjust the tablet display in an optimum tilt position for different application.

1.2.3 Pen (P20C)

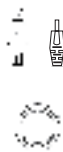


Note: Make sure your P20C pen is powered, you can charge it for 1 hour before using it.

1.2.4 Other accessories



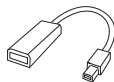
Pen Pocket x 2



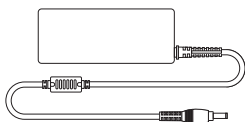
Pen Charging Line x2



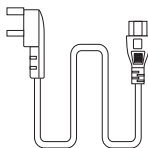
Pen Nib x 20



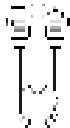
HDMI to Mac
Adapter Cable



Power Adapter x1



Power Cable x1



HDMI Cable x1



USB Cable x1



Pen Holder x1



Nib Remover x1



Artist Glove x2



Driver Download
Reminder x1



User Manual x1

1.3 Specifications

1.3.1 Display

Item	Specification
Technology	Full-laminated technology
Display	Anti-glare glass
Product Dimensions	522(L) x 316(W) x 18(H) mm (Not including stand)
Weight	3.5 kg
Display Area	476.64(L) x 268.11(W) mm
Resolution	1920 x 1080
Pixel Pitch	179.25 (H) x 179.25 (V) μ m
Support Color	16.7M
NTSC	92%
Brightness	250 cd/m ²
Contrast Ratio	1000 : 1
Visual Angle	178° (H) - 178° (V)

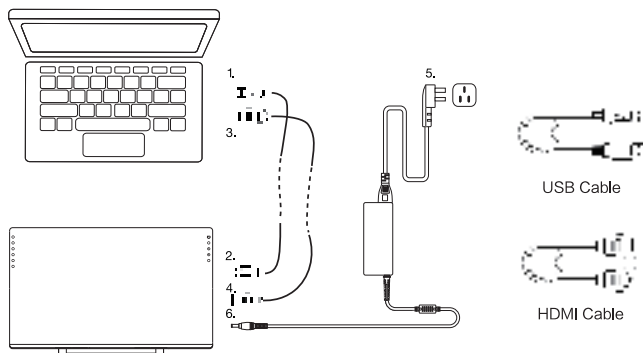
1.3.2 Tablet

Item	Specification
Technology	Electromagnetic
Screen Size	21.5 inch
Pressure Sensitivity	8192 Levels
Data Report Rate	250 PPS
Resolution	5080 LPI
Reading Height	Max 15 mm
Response Time	14 ms
Power Line	1.5m AC power line
Power Adapter	External power adapter (input 100-240V/AC, 50/60Hz, output 12V/DC-3A)
Interface Support	DC power in, HDMI input, USB port

1.4 Display Connection

- 1) Connect one end of the USB cable to the computer .
- 2) Connect the other end of the USB cable to VK2200.
- 3) Connect one end of the HDMI cable to the computer .
- 4) Connect the other end of HDMI cable to VK2200.
- 5) Plug the power cable into the power outlet.
- 6) Plug the end of the power adapter into VK2200 power port.

If connected properly,after pressing the power button on the VK2200, the VK2200 display will be turned on successfully.



Note

1. Please insert the VK2200 USB cable to the host USB port of your computer.
2. Make sure your computer supports multiple monitors. Check if your computer has extra HDMI ports. If your computer has an independent video card, please use the HDMI ports there.
3. If there isn't any input signal, it means the display doesn't receive HDMI video input. Please reconnect the HDMI cable, or change another HDMI cable or change another computer to have a try.

2 Driver Installation

2.1 System Requirement


Windows 10/8/7/ (32/64 bits)

Mac OS 10.12 or later

2.2 Driver Installation

- (1) Before installing VEIKK driver, please uninstall all tablet drivers from your computer completely .
- (2) Disable all antivirus program or firewall , keep all drawing softwares closed.
- (3) Connect VK2200 to your computer.
- (4) Please download VEIKK driver from our official website: www.veikk.com
- (5) Click “VK Tablet Driver.exe” and follow the prompts to install. For Mac system, please open it with default installer.



- (6) Once the driver is completely installed, you will see an icon  appearing on the system tray (lower right corner) and the desktop (Windows) and system Preference (Mac).
- (7) After a successful installation, the digital pen should be able to control the cursor, and activated for configuration on the pressure test area.

Note: If your computer operating system is the newest **Mojave10.14**, please add the “Tablet Driver Center” into the white list first after installed the driver on your computer. Please refer to the website's FAQ for more details.



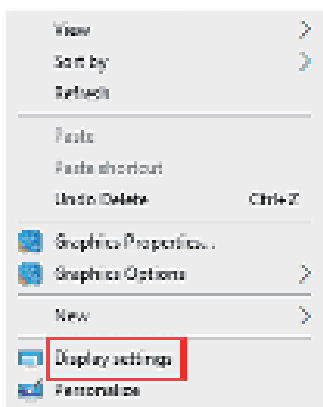
3 Monitor Mapping

On the display settings interface, you can set your monitors to “Extend these displays” or “Duplicate these displays”.

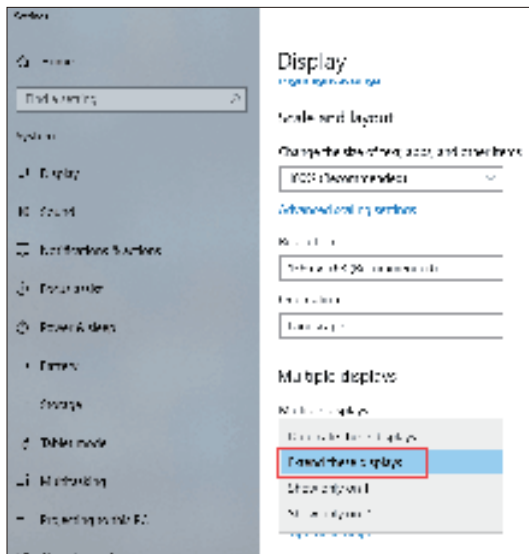
How to Change to Extended Display.


Extended Display means you work with a larger Windows desktop area spanning your computer monitor and your VK2200 Display. Applications can be moved from one display to the other, and will allow you to work in different screen resolutions.

(1) Right-click your desktop and select “Display Settings”.



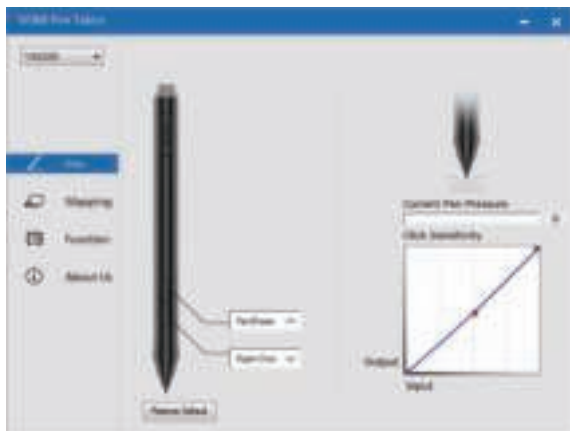
(2) In Multiple Displays dropdown, change to **[Extend these Displays]**.



- (3) If your computer is equipped with more than one monitor, your VK2200 pen display will map to the monitors based on how they are configured in the DISPLAY PROPERTIES control panel.
- (4) After you have correctly configured your computer for multiple monitors, you can then adjust your VK2200 pen display mapping by opening the driver icon  and changing the appropriate options. This enables you to toggle the current VK2200 mapping and screen cursor between the system desktop or primary display and your other monitors.

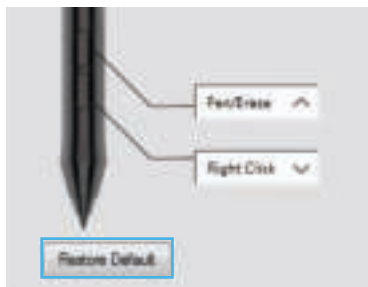
4 Driver setting

4.1 Pen



4.1.1 Pen Function Settings

You may customize the functions of your tablet pen's barrel buttons here. Use the "Pen" option to program custom keystrokes.



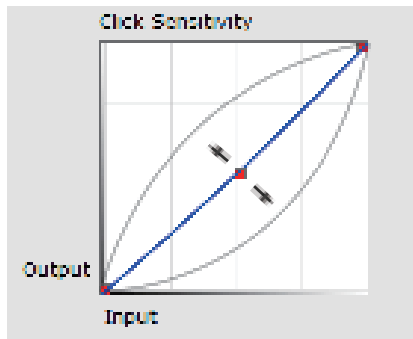
4.1.2 Current Pen Pressure

Current Pen Pressure shows the current pressure level being exerted on your tablet and can be used to test pen pressure.



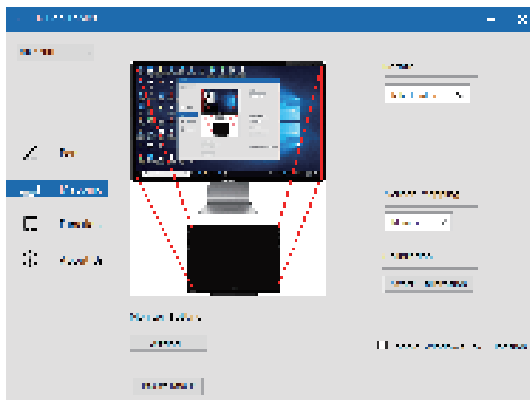
4.1.3 Click Sensitivity

You can adjust the pen pressure to “Output” or “Input” sensitivity here.



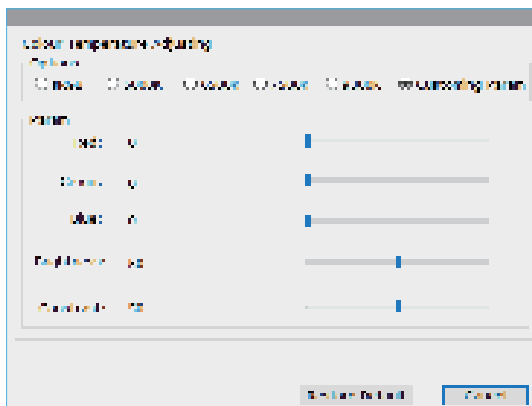
4.2 Mapping

Define the display area that will be mapped to the computer screen area.



4.2.1 Monitor Setting

Here you can adjust the monitor color temperature and parameter.

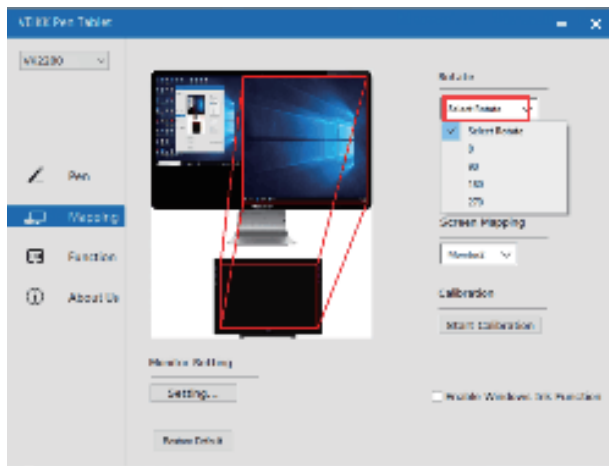


4.2.2 Rotate

It can freely rotate the pen display, and satisfy left hand users .

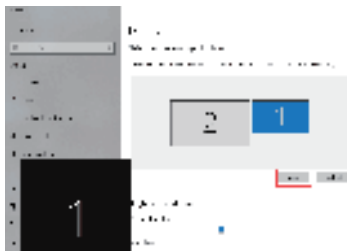
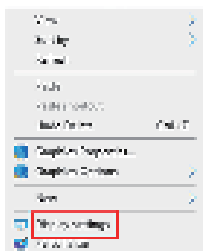
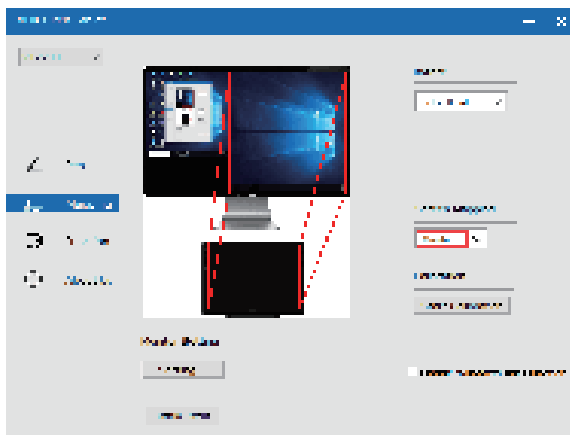
Note:

- When you set the rotate function, you must also rotate your VK2200.
- Before setting the rotate function, you have to set your computer to "Extend These Displays".



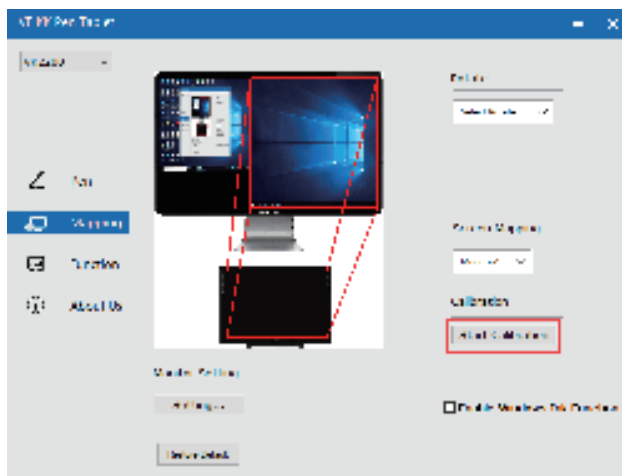
4.2.3 Screen Mapping

If working in Extended Display, choose which monitor you want your VK2200 pen display to track with. Most likely, you will want it to track with the VK2200 display. To learn which monitor is Monitor 1 and which is Monitor 2, Please go to "Display Settings" > "Identify".



4.2.4 Calibration

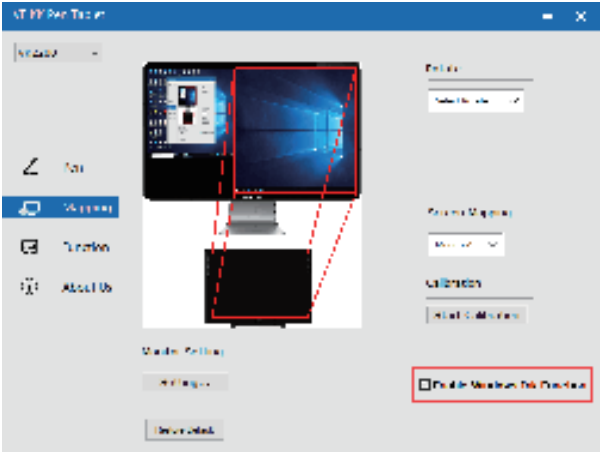
Click "Start Calibration" to activate the calibration screen. Press crosses appearing on the screen one by one with the pen to calibrate the screen.



Note: Before calibrate, you have to set your computer to "Extend These Displays" firstly.

4.2.5 Enable Windows Ink Function

This capability can be toggled on and off here. Enabling this will allow support for Windows Ink and applications that run using Windows Ink.



4.3 Functions

4.3.1 Shortcut Keys Setting

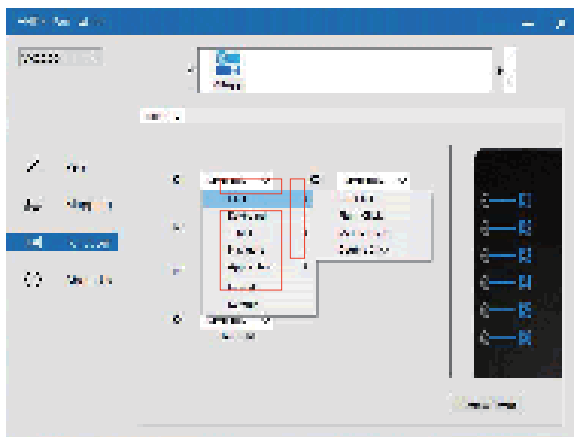
Note:

(1) The VK2200's shortcut keys are designed to work with US English. Keys may not function correctly with the other keyboard languages.

(2) By default, the VK2200 shortcut keys are mapped to standard Photoshop keyboard shortcuts. The function of the keys can be customized according to the software you use.

(3) Most creative software will not accept keystroke inputs when P20C pen is still in use. To avoid invalid keystroke actions, hold the pen away from the screen before pressing your touchkey.

1) Set the keys features directly in the driver interface (Click, Tablet, Navigate, Application, Invalid, Default) Click the ">" to find more specific features.

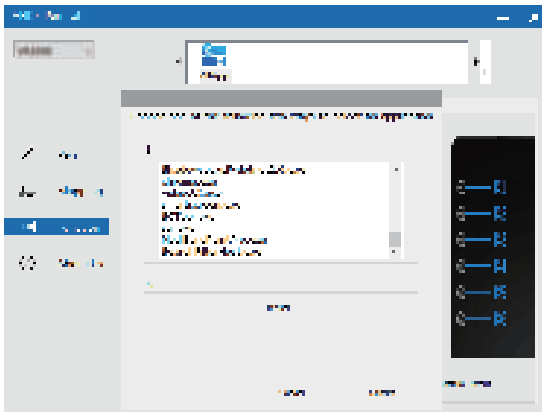


c. In Add Special Keys dropdown, you can choose special characters.



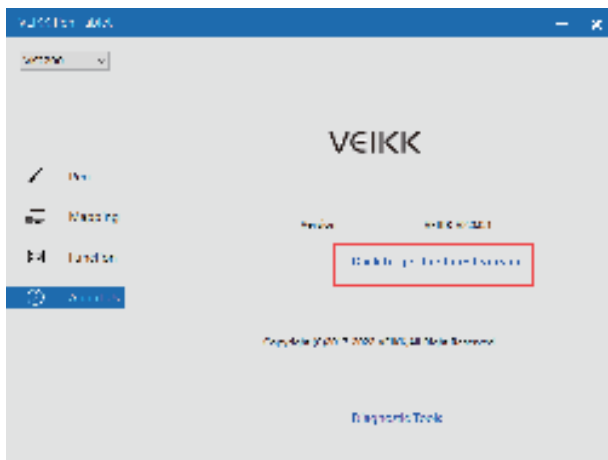
You can set each shortcut key for different software

a. Click the “+” button go to select program tab.

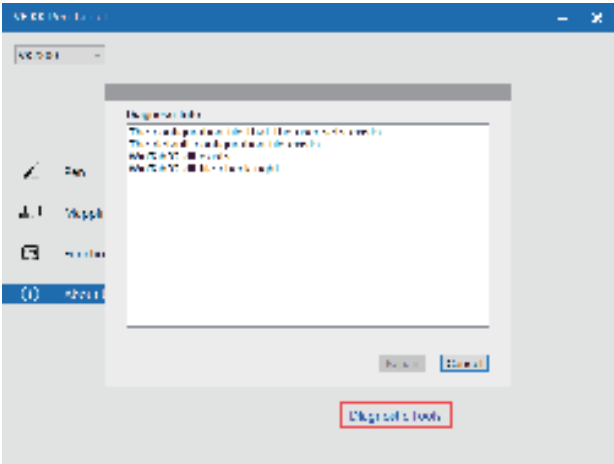


4.4 About Us

Choose “Click to get the latest version” if you want to install the latest driver. If there is no response, that means the driver you installed is the latest. If you find latest driver in the list, you just need to update.



Diagnostic Tools: Check for missing key files.



Mac:


Note:Driver settings in Mac system are the same in Windows system.
Users who use Mac system can refer to Windows system.

5 FAQ

1. Where can I download the latest VEIKK driver?

Please visit the VEIKK website to download the current updated driver version: www.veikk.com


2. How to install driver for VEIKK pen display?

- (1) Please uninstall all tablet drivers from your computer completely.
- (2) Disable all antivirus program or firewall, and keep all drawing softwares closed.
- (3) Please connect HDMI cable, Power cable, and USB cable to the computer and VEIKK pen display. If your computer video port is not HDMI port, you can use a transfer tool, like VGA to HDMI or DVI to HDMI.
- (4) Please download VEIKK driver from our official website: www.veikk.com
- (5) Click VK TabletDriver.exe and follow the prompts to install. If Mac system, please open it with default installer.
- (6) Once the driver is completely installed, you will see an icon  appearing on the system tray (lower right corner) and the desktop (Windows) and system Preference (Mac).
- (7) After a successful installation, the digital pen should be able to control the cursor, and activated for configuration on the pressure test area.

3. My pen display shows no signal.

- (1) Make sure HDMI cable has been connected to both the pen display and computer, and be connected tightly.
- (2) Try to test pen display with another computer.
- (3) If you use USB to HDMI transfer adapter, please make sure it is in good condition before using.

4. My tablets can not use the pen pressure.

- (1) Make sure the tablet icon  is in the task-bar. If not, it means you have not installed the driver, please install the driver and then reboot system to test again.
- (2) If you can see the driver icon in the task-bar, please open it and go to the “Pressure” interface to test the pen pressure. If the pen pressure level changes when you click with the pen, that means you have installed the driver correctly.
- (3) Make sure the application that you are using supports pen pressure. Not all of the applications support pen pressure function.
- (4) Have you ever installed other tablet driver in your computer? If yes, please uninstall all drivers and reboot. When the computer restarts, install the VEIKK driver again.

5. The pen can not control the cursor.

- (1) Make sure USB, HDMI and power cables are connected correctly.
- (2) Make sure the VK2200 display has been turned on.
- (3) Make sure your P20C pen is powered, you can charge it for 1 hour before using it.
- (4) Change a USB Port or a computer to have a try.
- (5) After all cables are connected correctly, check whether the pen can control the cursor even without tablet driver. If yes, disable your antivirus and keep all drawing softwares closed, then go to our website to download the latest driver and install it .

6.How to set extend mode/mirror mode?

For Windows :

- (1) Please go to the display setting in your computer's control panel.
- (2) If you want to set mirror mode, both of the monitors must be set the same DPI.
- (3) If you want to set to extend mode, please right-click the desktop, choose "Extend these displays" in "Multiple displays".

For Mac :

Please open System Preferences, then click Displays—Arrangement. Please don't choose "Mirror Displays".

7 How to uninstall driver?

Windows:

Run 'Control panel — Run 'program'— choose'VKTabletDriver'— follow the unload tips until unloading is finished.

Mac:

- (1) Open'Finder'—'Application'—'Pen tablet Setting'—'Uninstall Pen Tablet Driver'
- (2) If the first method dose not uninstall the driver completely, please open 'Finder'---'Application'—'Pen tablet Setting', then delete the file directly.

VEIKK

Any questions, please contact us

Beijing Veikk E-commerce Co., Ltd.

Email : service@veikk.com

Skype : veikk service

Website : www.veikk.com