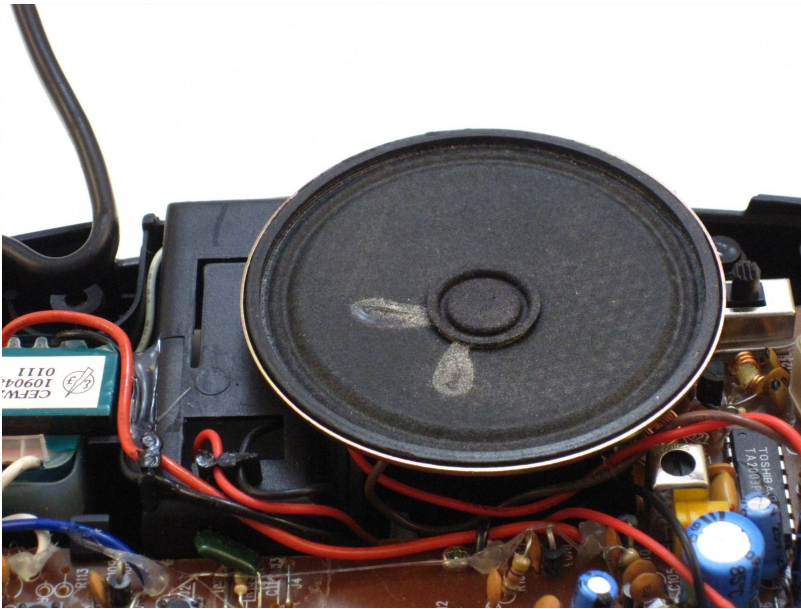




GE 7-4836B Alarm Clock AM-FM Radio Speaker Replacement

This guide involves further disassembly of the...

Written By: Dominick Giguere



INTRODUCTION

This guide involves further disassembly of the clock radio and will require using several different tools and techniques, including using a soldering iron. If you need help on how to use a soldering iron, consult this iFixit guide: [How To Solder and Desolder Connections](#)

🔧 TOOLS:

[FixHub Power Series Smart Soldering Iron](#)
(1)

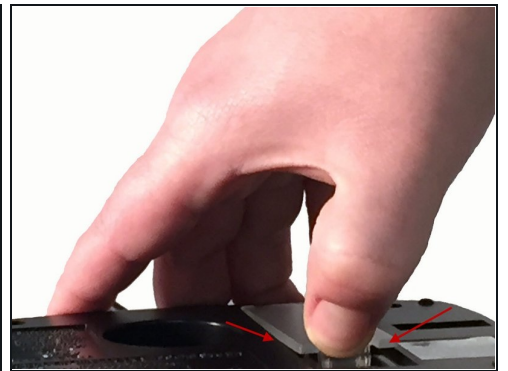
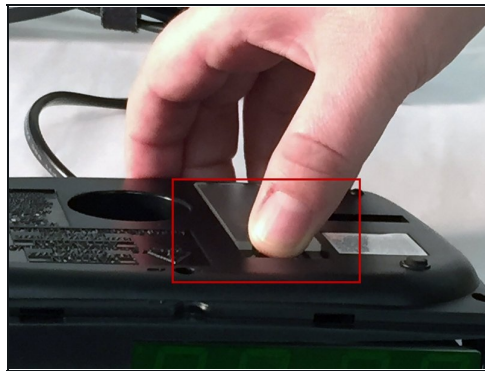
[Lead-Free Solder](#) (1)

[Phillips #00 Screwdriver](#) (1)

⚙️ PARTS:

[65 mm 115048352530 AM-FM Alarm Clock Speaker](#) (1)

Step 1 — Battery Compartment Cover



- Find the battery compartment on the bottom of the clock radio.
- Using your thumb, push the compartment cover latch toward the battery.
- With the latch pushed in, pull the compartment cover upward to remove it..

Step 2 — Battery



- Lift the battery from the compartment.
- Pull the battery up and gently disconnect it from the battery connector.

Step 3 — Screws



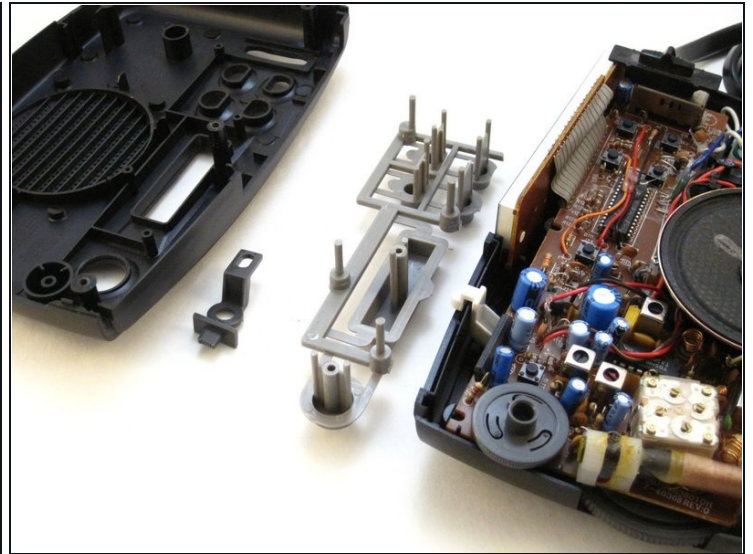
- Using a Phillips #00 Screwdriver, unscrew the six 12mm screws from around the bottom of the clock radio.

Step 4 — LCD Cover



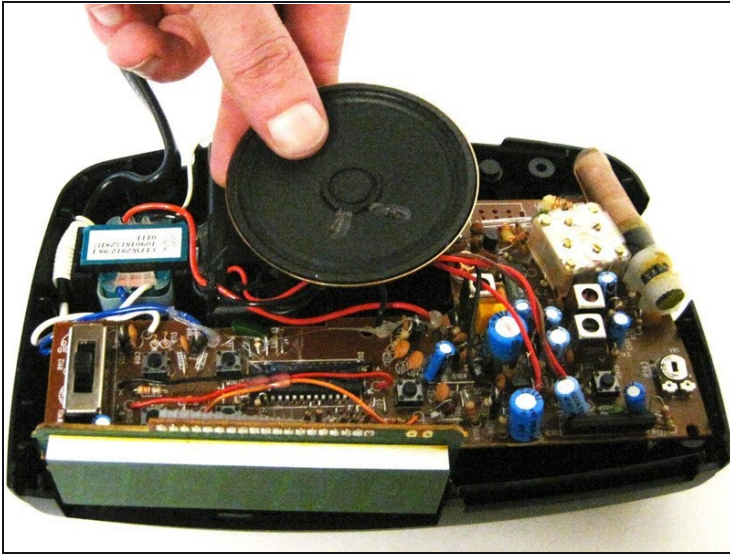
- Gently pull the liquid crystal display (LCD) cover off.

Step 5 — Clock Radio



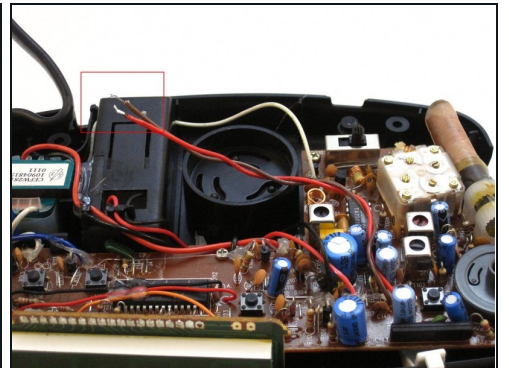
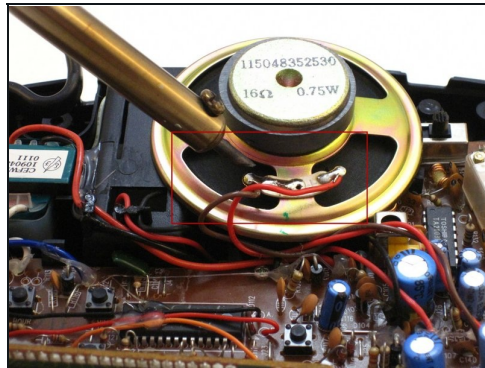
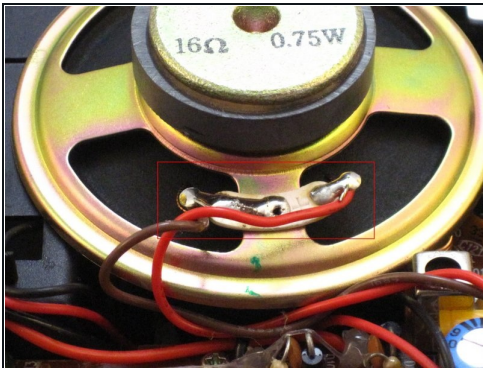
- Lift the top off. Two gray, plastic internal pieces will fall out when you do this; set them aside.

Step 6 — Speaker



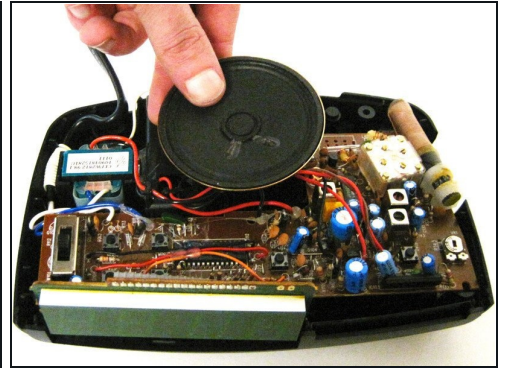
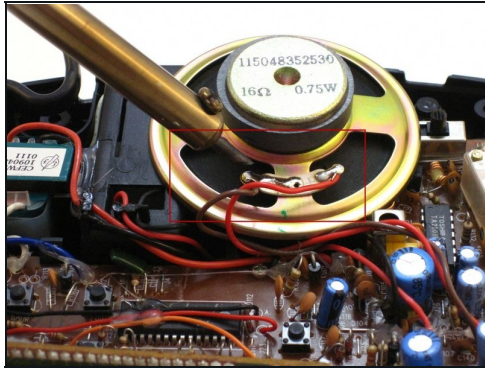
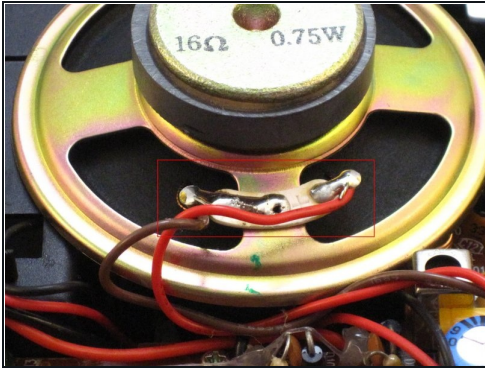
- Grip the speaker.
- Lift the speaker from the holder.
- Turn the speaker over.

Step 7 — Speaker from Wires



- The red wire is the + and the tan wire is the -. These wires are connected with solder.
- Apply the hot soldering iron tip to the speaker connection solder.
- Pull the speaker away from the wires.

Step 8 — New Speaker



- Attach a new 65 mm speaker, model #115048352530, with the wire connectors. Match the red wire to the + and the tan wire to the -.
- Solder the wires to connect. Let the solder cool.
- Reverse Step 6 to insert the new speaker in holder.

To reassemble your device, follow these instructions in reverse order.