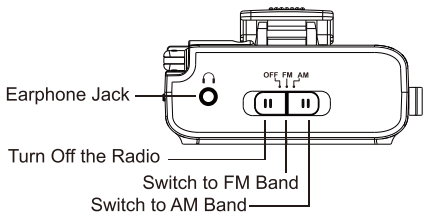
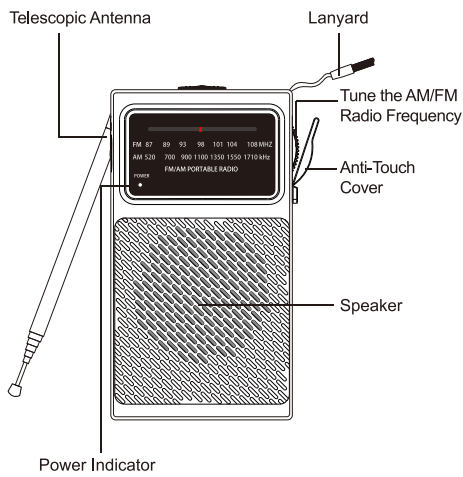
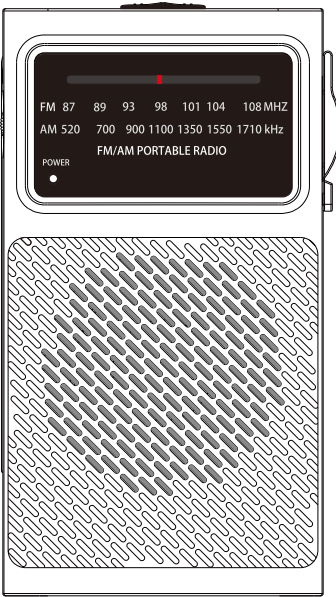
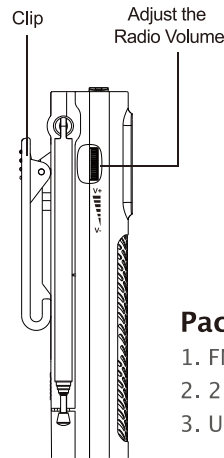


AM/FM Radio
User Manual
(Model: QL-955)



1



Package Contents

1. FM/AM Portable Radio
2. 2 AA Batteries
3. User Manual

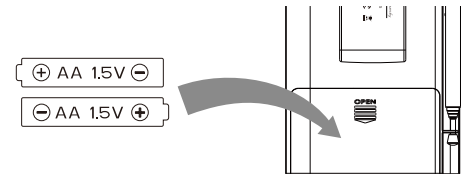
Radio Specification

Power Supply: 2*AA 1.5V Alkaline Batteries
FM Radio Frequency: 87-108MHz
AM Radio Frequency: 520-1710KHz
Dimensions: 5.1"(H) x 2.7"(L) x 1.5"(W)

Radio Set Up

1. Remove the battery compartment cover
2. Insert 2 x AA Alkaline batteries into the battery compartment following the polarity (+/-) diagram in the battery compartment as below.

2



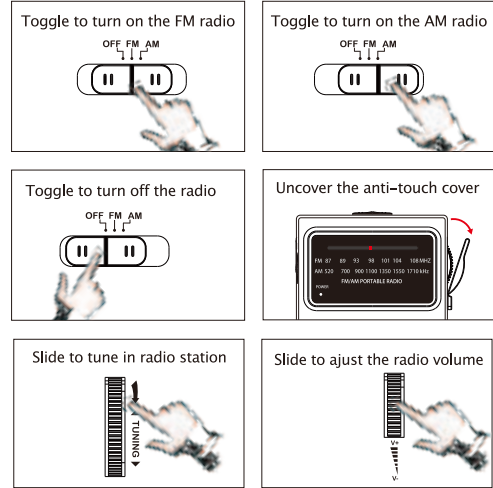
PLEASE DISPOSE OF OLD OR DEFECTIVE BATTERIES IN AN ENVIRONMENTALLY SAFE WAY AND IN ACCORDANCE WITH YOUR LOCAL LAWS AND REGULATIONS.

BATTERY SAFETY: Clean the battery contacts and also those of the device prior to battery installation.

Remove batteries from equipment which is not to be used for an extended period of time. Follow the polarity (+/-) diagram in the battery compartment. Promptly remove dead batteries from the device. Dispose of used batteries properly. Only batteries of the same or equivalent type as recommended are to be used. DO NOT incinerate used batteries. DO NOT dispose of batteries in fire, as batteries may explode or leak. DO NOT mix old and new batteries or types of batteries (alkaline/standard). DO NOT use rechargeable batteries. DO NOT recharge non-rechargeable batteries. DO NOT short-circuit the supply terminals.

3

Tune In Radio



Note: For better FM reception, extend the telescopic antenna to its full length; For better AM reception, there is a built-in antenna so turn the unit to various direction.

Earphone Jack

Plug in your earphones to listen to the radio.



Note: Earphone is not provided.

4

After Sales Service

If you encounter problems when using this DreamSky portable AM/FM radio, check the following points before requesting service. If the problem remains unsolved, please contact us by

Q: No power

A: Batteries dead/incorrectly inserted, insert fresh batteries are required.

Q: No sound

A: Volume not adjusted. Headphones connected to the set.

Q: Poor radio reception

A: Weak radio signal, extend/incline and turn the telescopic antenna for best reception.

Our Warranty

90-day money back guarantee
366-day free replacement

5

This device complies with part 15 of the FCC Rules. Operation is subject to the following two conditions: (1) This device may not cause harmful interference, and (2) this device must accept any interference received, including interference that may cause undesired operation.

Any Changes or modifications not expressly approved by the party responsible for compliance could void the user's authority to operate the equipment.

Note: This equipment has been tested and found to comply with the limits for a Class B digital device, pursuant to part 15 of the FCC Rules. These limits are designed to provide reasonable protection against harmful interference in a residential installation. This equipment generates uses and can radiate radio frequency energy and, if not installed and used in accordance with the instructions, may cause harmful interference to radio communications. However, there is no guarantee that interference will not occur in a particular installation. If this equipment does cause harmful interference to radio or television reception, which can be determined by turning the equipment off and on, the user is encouraged to try to correct the interference by one or more of the following measures:

- Reorient or relocate the receiving antenna.
- Increase the separation between the equipment and receiver.
- Connect the equipment into an outlet on a circuit different from that to which the receiver is connected.
- Consult the dealer or an experienced radio/TV technician for help.