

KywooPrint Installation & Operation

Content

1. Introduction.....	1
1.1 Introduction.....	2
1.2 Functions.....	2
2. Operating system.....	2
3. Instruction for Mobile Phones.....	2
3.1 Installation.....	2
3.2 Operation.....	2
3.4 Add Device.....	3
4. Instruction for Computers.....	8

Shenzhen Kywoo3D Technology Co.,Ltd

1. Introduction

1.1 Introduction

KywooPrint is a software/app for real-time monitoring 3D printer printing models. Users can monitor and operate the 3D printer in real time as long as they connect the phone/computer to the same network with the camera, which is convenient for users to monitor the status of the model in real time.

1.2 Function

- (1) Know the printing status anytime and anywhere;
- (2) Change the temperature, printing speed, printing model, etc. via your mobile phone.

2. Operating system

This software/app can run on PC, Mac, and phones with Android 4.4 and iOS11.0 and above.

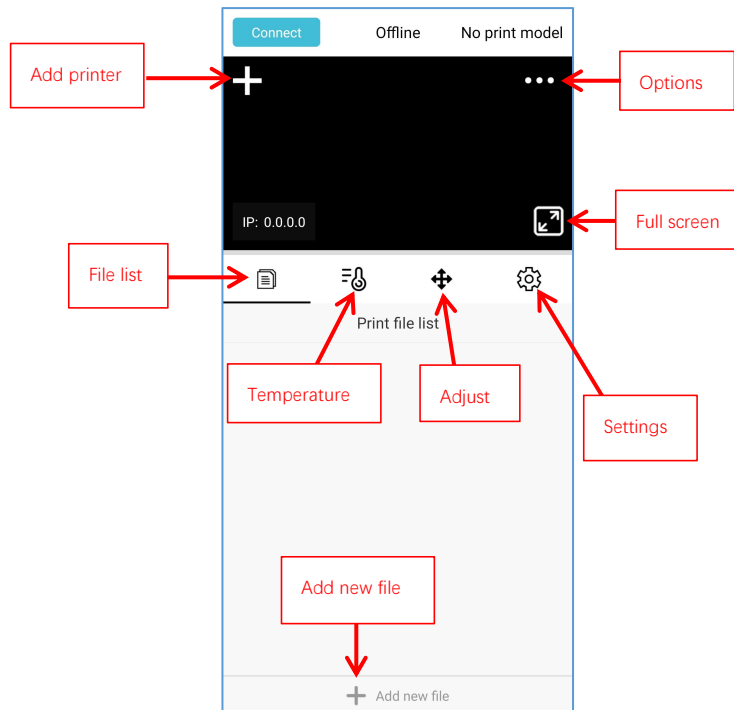
3. Instruction for Mobile Phones

3.1 Installation

KywooPrint can be downloaded in the app store.

3.2 Operation

After installing, tap the desktop icon to enter the system, the main interface is as shown in the figure:



Add printer: connect to the printer

Options: capture, remote playback

Full-screen: full-screen display

File list: display print files

Temperature: display nozzle and hotbed temperature

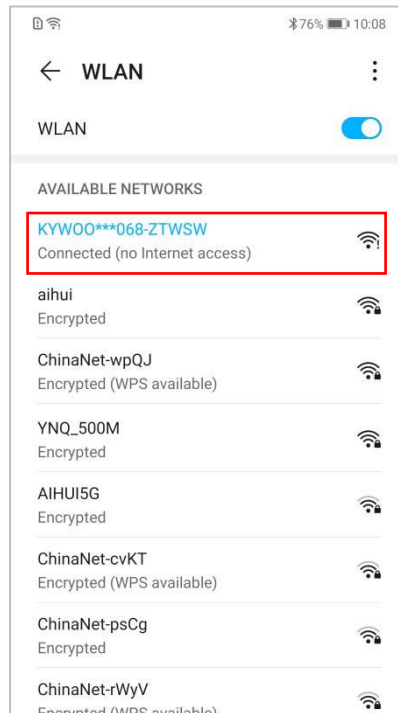
Adjust: adjust X, Y, Z-axis position

Settings: turn off the fan, about, account

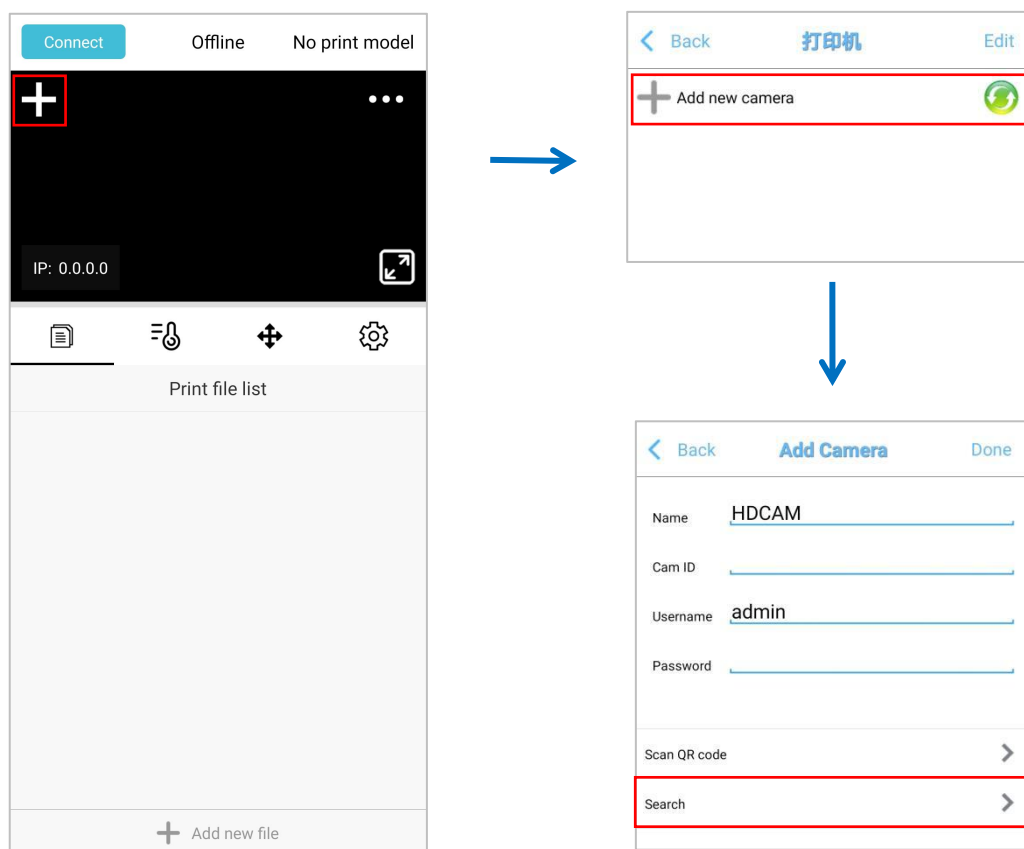
Add new file: new files can be added

3.4 Add device

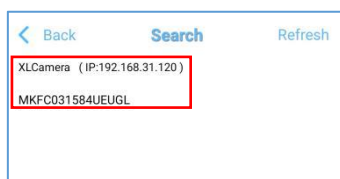
(1) Connect the device, turn on the mobile WiFi, find the WiFi name starting with Kywoo, the password is 01234567, click connect, and open the Kywoo Print software after the connection is successful.



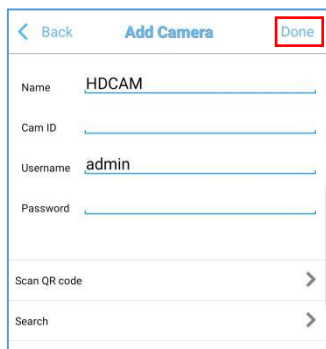
(1) Click "+" in the upper left corner of the screen, then click "Add new camera", and finally click "Search".



(2) Tap to add the searched device.



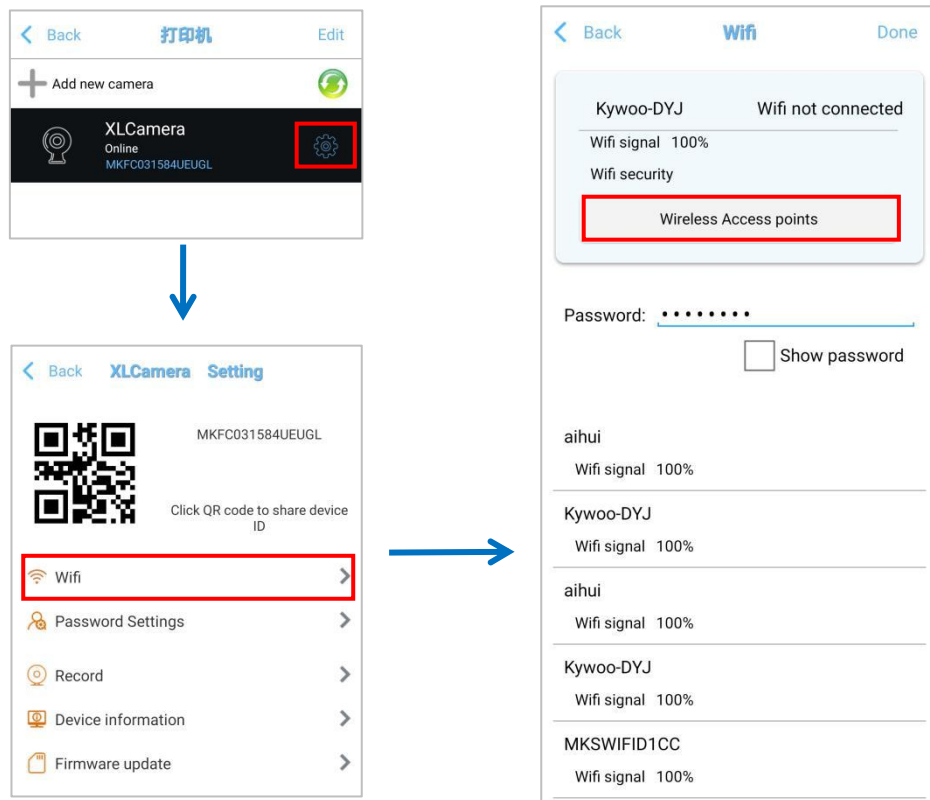
(3) Tap "Done".



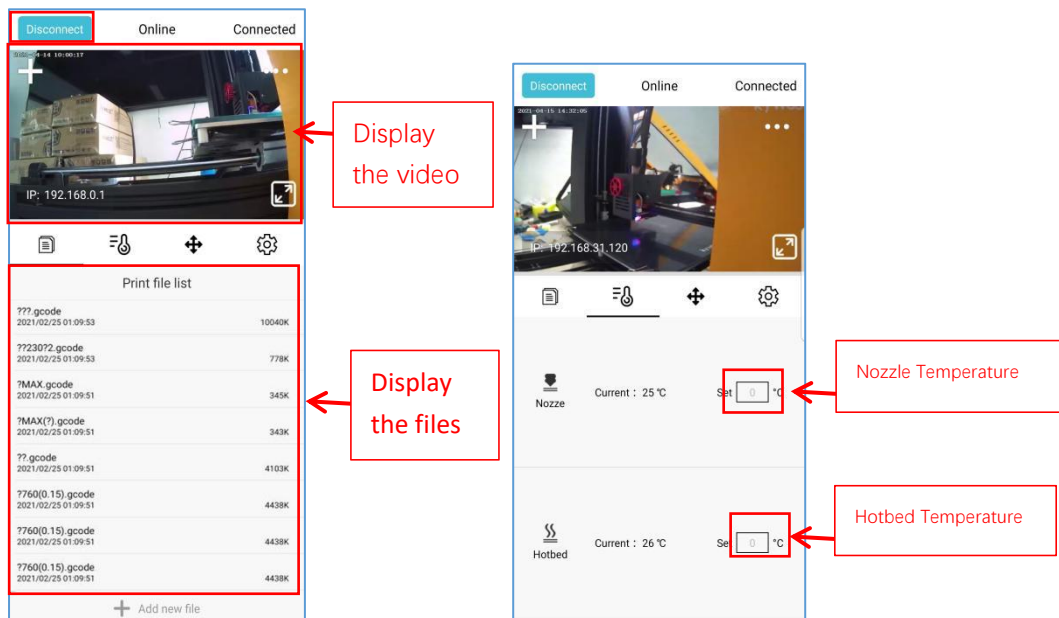
(4) Tap in the added device.



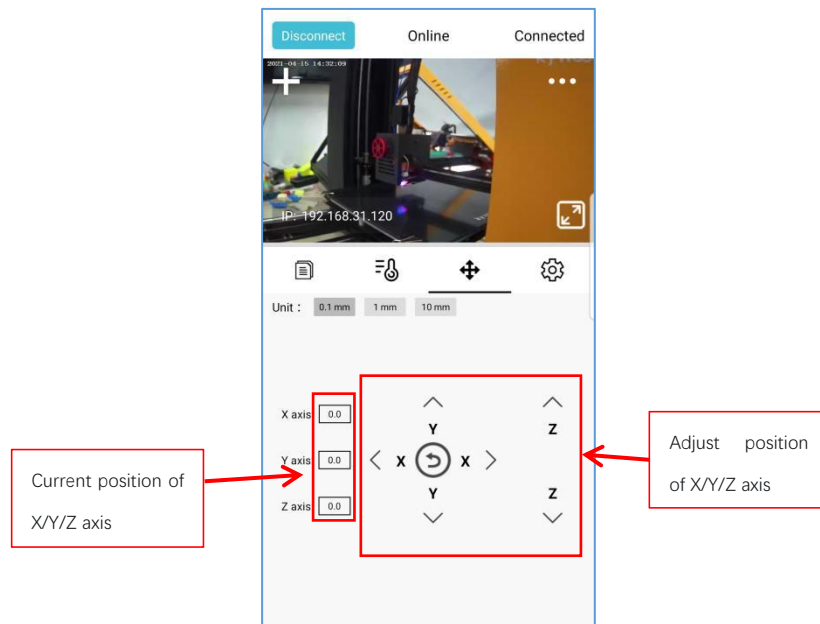
(5) Wait for the camera status to be displayed as online, and click Set. WIFI settings, select the WiFi to be connected, enter the WiFi password, and click Finish.



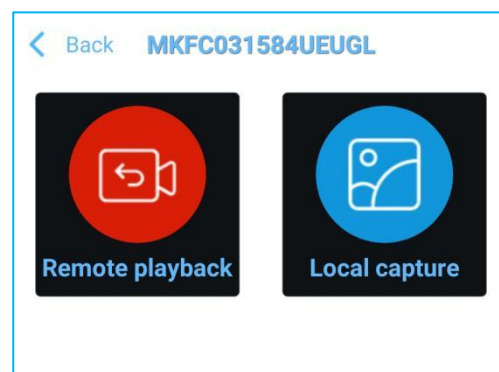
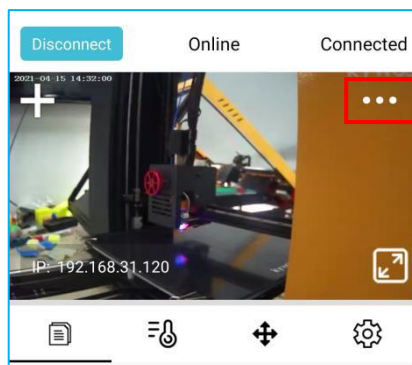
(6) If it shows “**Unconnected**”, please tap “**Connect printer**” then you will see the file list and temperature.



(8) Adjust X, Y, and Z axis.



(9) Click the full screen option to take photos and videos. On the main page, click the "..."
icon in the upper right corner to view the videos, pictures and playback.



4. Instruction for Computers

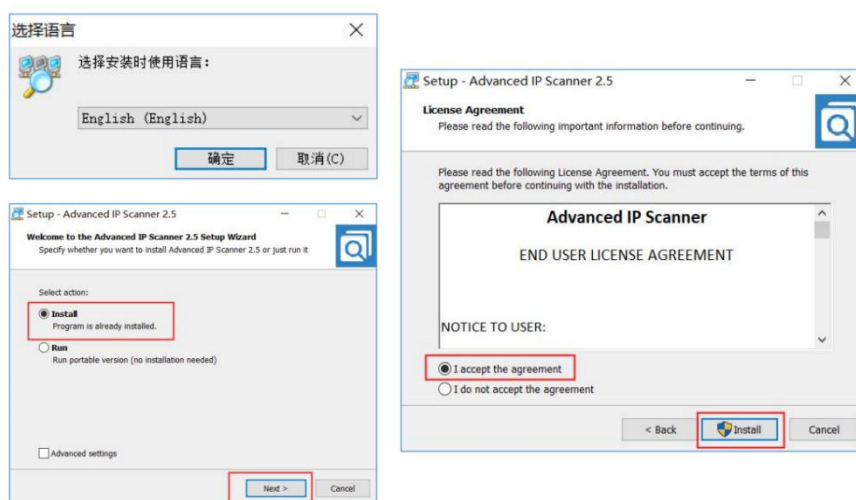
4.1 Software installation

1)Method 1

①Download the KywooPrint files for PC from kywoo3d.com.



②Open Advanced_IP_Scanner_2.5.3850.exe in the root directory of the KywooPrint folder to install the software.



③Open the software, set the IP address range to 192.168.31.1-254, then click **Scan**, find an IP address named **ipcam**, then note down its IP address.

Advanced IP Scanner

文件(F) 查看(V) 设置(S) 帮助(H)

扫描

192.168.31.1-254

结果 收藏夹

状态	名称	IP	制造商	MAC 地址	备注
	DESKTOP-K369Q1B	192.168.31.1...		04:D4:C4:E2:D3:B6	
	jg	192.168.31.1...	ASUSTek COMPUT...	E0:3F:49:2F:03:DC	
	USER-20200803WW	192.168.31.1...	Extreme Networks...	00:E0:2B:68:2D:33	
	android-4115d9873d7f55c6	192.168.31.1...	GUANGDONG OPP...	44:04:44:D8:01:AC	
	OPPO-R11s-Plus	192.168.31.1...	GUANGDONG OPP...	DC:55:83:24:12:D3	
>	DESKTOP-19MPOHA	192.168.31.1...	Intel Corporate	94:B8:6D:C7:7E:50	
	HUAWEI_P40-be4a887a105f61	192.168.31.1...		D2:5D:EA:FE:92:49	
	HUAWEI_Mate_30-775c524fe4	192.168.31.1...		82:CA:A8:3D:BA:18	
	HUAWEI_Mate_30_Pro_5G-755	192.168.31.1...			
	SD-20191206KFRA	192.168.31.1...	Positron Inc.	00:E0:9A:68:37:31	
>	AirDisk_Q3X_CFD	192.168.31.1...	Shenzhen Netcom ...	84:5D:D7:11:5C:FD	
	SD-20191206KFRA	192.168.31.1...	Extreme Networks...	00:E0:2B:68:2D:41	
	W-20200910MHNVV	192.168.31.1...			
	W-20200910MHNVV	192.168.31.1...	Cisco Systems, Inc	00:E0:1E:68:07:6B	
	W-20200910MHNVV	192.168.31.1...	Cisco Systems, Inc	00:E0:1E:68:07:6A	
	W-20200910MHNVV	192.168.31.1...	Cisco Systems, Inc	00:E0:1E:68:07:6F	
>	天下王洲	192.168.31.1...	Extreme Networks...	00:E0:2B:68:2D:43	
	W-20200910MHNVV	192.168.31.1...	Cisco Systems, Inc	00:E0:1E:68:07:6C	
	SD-20191206KFRA	192.168.31.1...	Positron Inc.	00:E0:9A:68:37:3B	
	Jeff	192.168.31.1...		8C:C8:4B:62:1F:E5	
	KDdeMacBook-Air	192.168.31.1...	Apple, Inc.	98:E0:D9:8F:A1:DD	
	LAPTOP-CRP3JTJU	192.168.31.2...		5C:80:B6:DD:42:B2	
	iPhone	192.168.31.2...		88:A9:B7:17:E0:BD	
>	ipcam	192.168.31.2...	SHENZHEN BILIAN...	0C:8C:24:97:94:6F	
	Honor_10-19127068a786fbef	192.168.31.2...	HUAWEI TECHNOL...	90:2B:D2:CA:C8:E8	
	LAPTOP-EVEUNDUT	192.168.31.2...		80:91:33:0E:4F:C5	
	iPhone	192.168.31.2...	Apple, Inc.	A0:18:28:55:8A:A7	
	iPhone	192.168.31.2...			
	SD-20191206KFRA	192.168.31.2...		44:F9:71:D5:C6:9C	
	iPhone	192.168.31.2...	Apple, Inc.	DC:A4:CA:4C:B1:D7	

④ Input the IP address into the address bar in Google Chrome and click **enter**, then you will enter the home page of KywooPrint, as below. Click **Connection**->**Connect** to the printer.

The screenshot shows the KywooPrint web interface. On the left, the 'Connection' tab is active, showing 'Serial Port' and 'Baudrate' both set to 'AUTO'. A 'Connect' button is highlighted with a red box. Below this, the 'State' section shows the printer is 'offline'. At the bottom left, a 'Files' section lists three G-code files: '???23072.gcode' (0.76MB), '????.gcode' (9.80MB), and '?(?).gcode' (0.28MB). On the right, the 'Temperature' section shows a graph for 'Nozzle' and 'Bed' temperatures, both currently at 0.0°C. Below the graph, a table shows the 'Actual' and 'Target' temperatures for both components.

	Actual	Target
Nozzle	0.0°C	off °C
Bed	0.0°C	off °C

2) Method 2

Check the IP address shown on the home page of the mobile KywooPrint APP and input it into the address bar in Google Chrome.



4.2 Home page introduction

1) Temperature page

- ① Check and control the connection
- ② Check and control the printing
- ③ Check and edit the print files
- ④ Switch the control page (Temperature/Control)
- ⑤ Check the real-time temperature curve, control the temperature of the nozzle and hot bed
- ⑥ Upload

KywooPrint kywoo3D

1 Connection

Serial Port:

Baudrate:

4 Temperature Control

2 State

State: **Printing**

File: **???.gcode**

Uploaded: **2021/02/25 01:09:53**

Size: **9.80MB**

Print Time: **00:08:11**

5 Real-time temperature curve

Graph showing Nozzle (red bar) and Bed (blue bar) temperatures over time.

3 Files

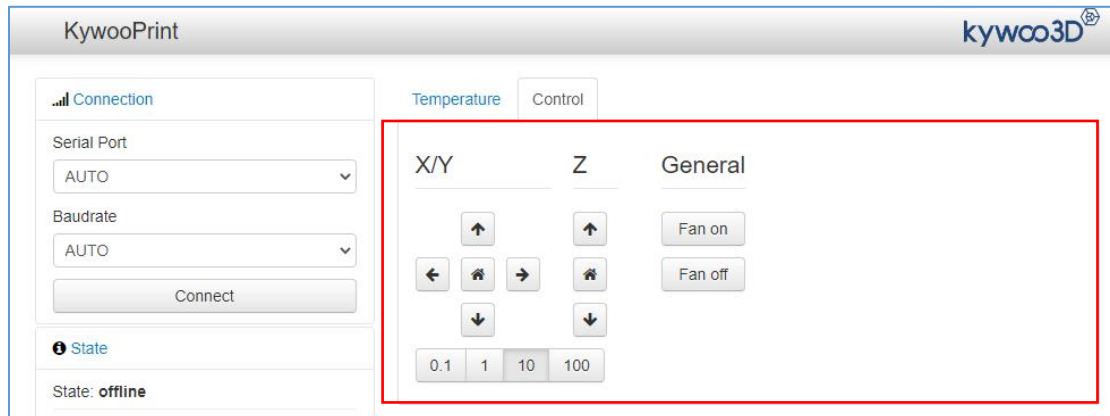
- ??23072.gcode
Uploaded: 2021/02/25 01:09:53
Size: 0.76MB
- ???.gcode
Uploaded: 2021/02/25 01:09:53
Size: 9.80MB
- ?(?).gcode
Uploaded: 2021/02/25 01:09:51
Size: 0.28MB
- ?gcode
Uploaded: 2021/02/25 01:09:51
Size: 0.28MB
- ?gcode

6 Control Table

	Actual	Target
Nozzle	199°C	<input type="button" value="-"/> <input type="button" value="off"/> °C <input type="button" value="+"/> <input type="button" value="✓"/>
Bed	55°C	<input type="button" value="-"/> <input type="button" value="off"/> °C <input type="button" value="+"/> <input type="button" value="✓"/>

2) Control page

Move X/Y/Z axis and control the motor and fan.



This device complies with part 15 of the FCC Rules. Operation is subject to the following two conditions: (1) This device may not cause harmful interference, and (2) this device must accept any interference received, including interference that may cause undesired operation.

Any Changes or modifications not expressly approved by the party responsible for compliance could void the user's authority to operate the equipment.

Note: This equipment has been tested and found to comply with the limits for a Class B digital device, pursuant to part 15 of the FCC Rules. These limits are designed to provide reasonable protection against harmful interference in a residential installation. This equipment generates uses and can radiate radio frequency energy and, if not installed and used in accordance with the instructions, may cause harmful interference to radio communications. However, there is no guarantee that interference will not occur in a particular installation. If this equipment does cause harmful interference to radio or television reception, which can be determined by turning the equipment off and on, the user is encouraged to try to correct the interference by one or more of the following measures:

- Reorient or relocate the receiving antenna.
- Increase the separation between the equipment and receiver.
- Connect the equipment into an outlet on a circuit different from that to which the receiver is connected.
- Consult the dealer or an experienced radio/TV technician for help.

This equipment complies with FCC radiation exposure limits set forth for an uncontrolled environment. This equipment should be installed and operated with minimum distance 20cm between the radiator & your body.