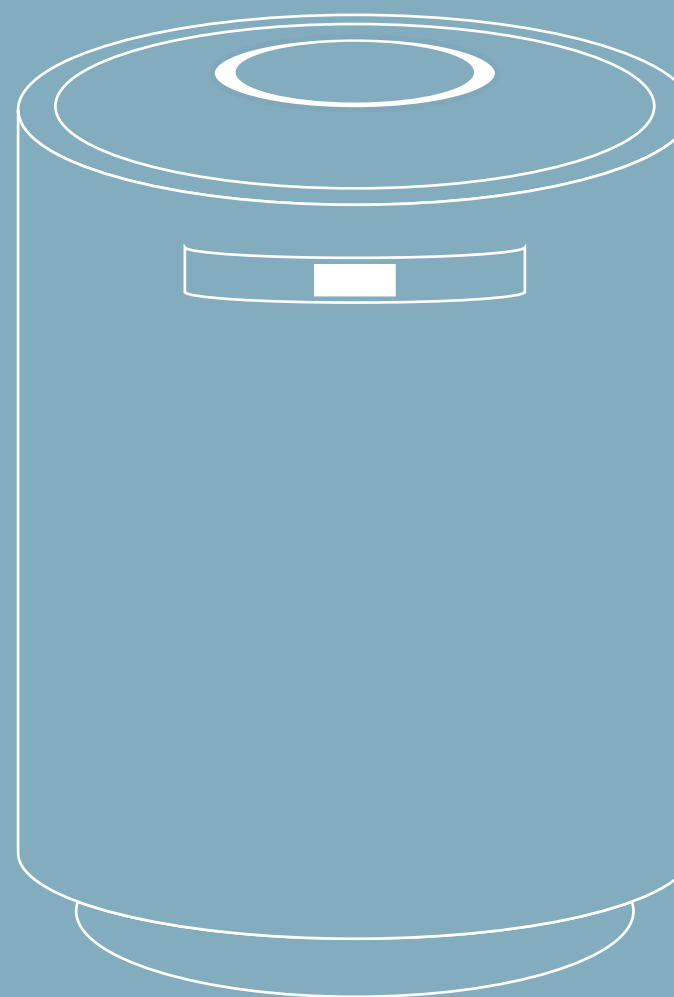




# Instruction Manual

YO-M2



**AIR STEAMER**

## Contacts

Address: Foshan Y&O Technology Co.,Ltd  
Production address: No. 21, 3RD Industrial Zone, Lecong  
Town, Shunde District, Foshan City, Guangdong Province,  
P.R China Zip code : 528061  
E-mail : YO-CS@outlook.com

Made in China

Thank you for purchasing our steam humidifier.  
Before using the product, please read this instruction manual carefully to ensure correct and safe use of this product. Please keep it properly after reading.

# Content

● Safety precautions	02
● Instruction to users	03
● Overview of machine	04-05
● Assembling setting	06
● Preparation	07
● How to use	07-08
● Maintainance	09-11
● Keeping	11
● Troubleshooting	12
● Specification	13
● Warranty service	14-15

## Safety Precautions

In order to prevent damage to users and damage to property, please understand the contents carefully and take note of the advice for correct and safe usage of the appliance.



### WARNING/CAUTION

When you see this sign, please refer to the safety precautions to avoid possible harm and damage.



Do not disassemble, repair or modify  
It may cause fire or electric shock.  
For repairs, please consult the store of purchase.



Do not immerse the unit in water or splash  
it with water.  
Do not let water get into the air outlet or vent of the  
main unit. It may cause electric shock or malfunction.

- Use a power supply of 120 V AC and do not use it beyond the rating of outlets or wiring equipment.
- Steam out from outlet about 60 °C, do not put hand and face close.
- Do not use when the power cord or power plug is damaged or the power outlet is loose.
- Do not connect or disconnect the power plug with wet hands.
- Make sure to insert the power plug fully into the outlet.
- Be sure to remove the power plug from the outlet before cleaning.
- In the event of an abnormality (such as when water is leaking or there is a burning smell), stop operation and disconnect the power plug from the outlet.
- Unplug the power plug from the outlet when not in use.
- Be sure to pull out the power plug from the outlet and always drain the water when moving.
- Do not damage, forcibly bend, pull, Ban twist, spring, put a heavy object on, pinch or process the power cord.
- Replace the water in the water tank with fresh tap water every day, and clean the inside of the main unit regularly.
- Do not move the machine during or immediately after use, hot water may spill and cause burns.
- Do not insert metal objects such as pins or wires or foreign matter into the outlet or gap.
- Do not use it children alone, or use it within the reach of infants, it may cause electric shock, burns or injury.
- Do not put it on an unstable place such as a carpet or tatami or soft carpet.
- Do not put chemicals, dirty water, alkaline ionized water, mineral water, etc. into water.  
Do not use anything other than tap water. It may cause malfunction or breeding of various bacteria.
- Do not place in direct sunlight or on or near heaters.
- Do not use for any purpose other than humidifying the room.

## Instructions to Users

- Please maintain it regularly.  
Scale inside the heater and tray may cause machine fault or abnormal odor.
- Please obey the following instructions to avoid scald:
  - Do not touch or place your hands and face near the mist outlet.
  - Please keep this product out of reach of children and infants.
  - Do not use this product on unstable place.
  - Do not inject water directly into the tray until it is cooling down.
  - Please pause running when open the upper lid.
  - Do not use this product with the upper lid open.
- This product cannot be used until the water tank is filled with water.
- Please clean the lower part of machine body and the floor (where it is placed) frequently.  
If the spilled water is not removed timely, the floor may be damaged.
- The water must be changed frequently. Please pour out the water in the tank if you do not use this product for a long time. Otherwise, the machine will be stained and the water will be rotten and produce stench.
- Please check whether the plug is loose (socket aging), whether there is Octopus-type wiring, and whether the power plug is fully inserted, etc.  
Do not use a loose socket. If the metal pins of the power plug is deformed or the wire is damaged, please stop using and maintain it.
- This product is for general household use. Do not use it for commercial use.

Overview of machine

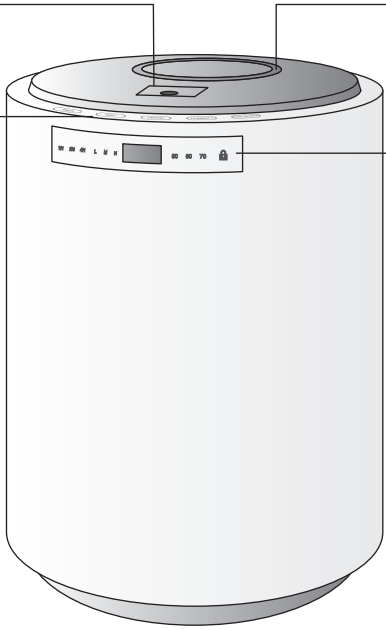
Main

Swich lever

Operation panel

Mist outlet

Display



Operation panel

Timer Setting

Mode Setting

Auto-Humidity

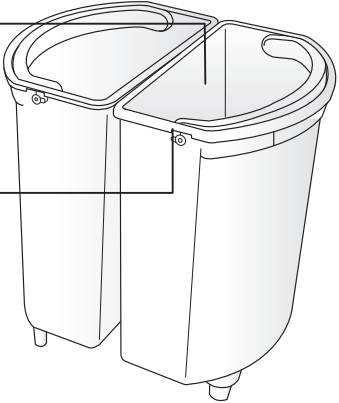
Safety Lock

1H 2H 4H L M H

50 60 70

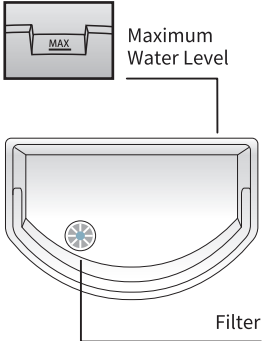
Water tank

Handle



Maximum Water Level

Filter



Please clean it regularly

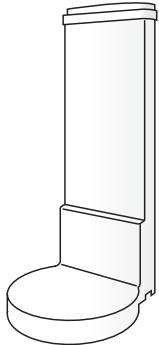
Gasket

Insert it into the mist outlet on the upper lid.

Steam cylinder

Please use it after properly installing.

Cover it on the heater.

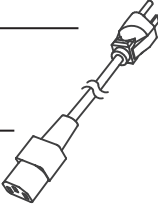


Power cord

Only use the supplied power cord.

Electrical plug

Connector



Float

Control the water supply valve.

Heater

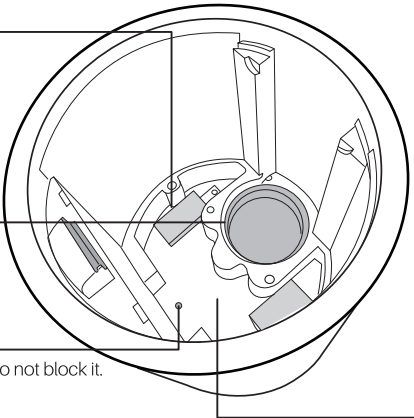
Boiling water.

Water inlet

Water flow into the heater do not block it.

Tray

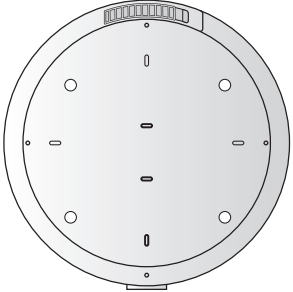
Collect water



Air vent

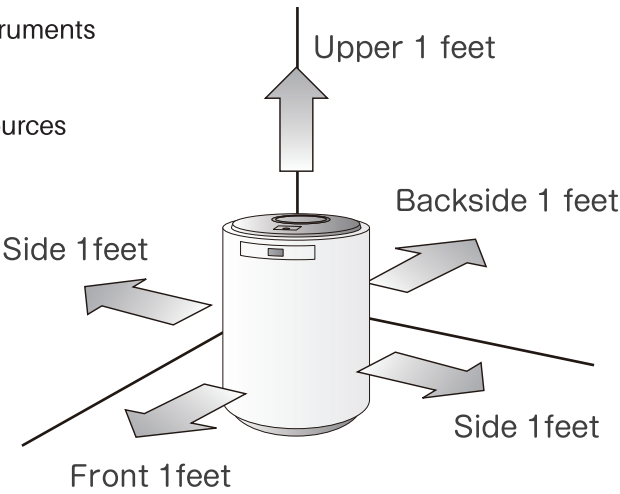
Built-in temperature sensor

Please clean the filter regularly

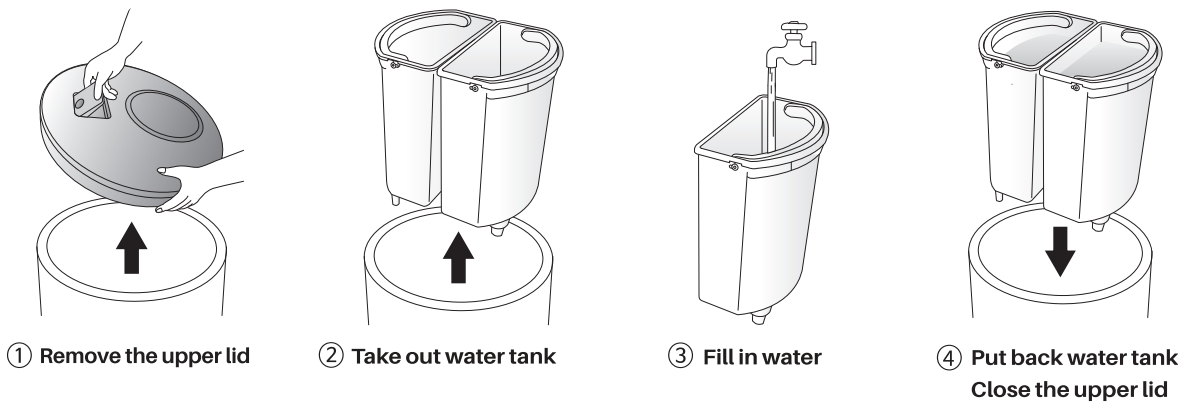


Assembling Setting

- Please place this product on a stable and flat place and keep a sufficient distance from the surrounding environment as shown in the right figure.
- Do not block the mist outlet or air vent.
- Do not place any objects in the areas shown in the right figure.
- Do not place this product in the following places.
  - An unstable and inclined place
  - Reach of children or infants
  - Near electrical appliances and precise instruments
  - Direct sunlight
  - On tablecloth or other heat-labile items
  - Near heating equipment and other heat sources
  - Steam emitted from the mist outlet directly contacts the furniture and walls
  - High Place



Preparation



**Note**

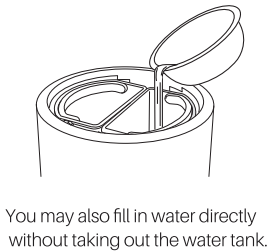
- 1. If the water tank is empty, the button will not work.
- 2. Two water tanks are equipped. The machine can continue to work even if one of the water tanks is empty.
- 3. The water in the two water tanks does not decrease uniformly. Such deviation is normal.

**⚠ Attention**

Do not use the following types of water

- Mineral water, alkali ion water, it is easy to breed mold and bacteria, resulting in machine fault.
- Chemicals, aromatics, aromatic oils or sewage, It may cause machine deformation and fault.

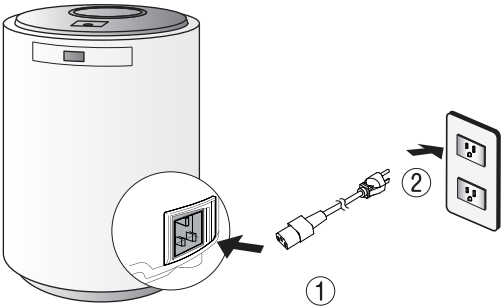
※ Do not exceed the full water line (MAX).



How to use

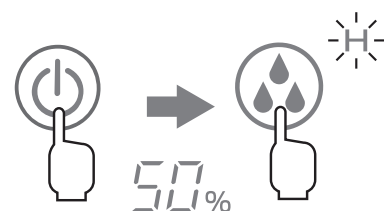
1 Insert power plug

- ① Insert the power plug into humidifier connector.
- ② Insert the power plug fully into the socket.



## 2 Start humidify

- ① Press the power button to start running.
- ② The machine starts humidify when it heat up to boiling.



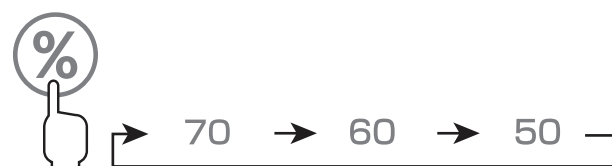
## 3 Humudify mode setting

Press to adjust humudify capacity in 3 levels.

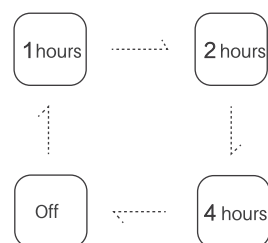


## 4 Auto-humidify setting

Press to adjust automatic humidity, maintain the pre-set humidity level in 3 levels.



## 5 Timer setting



Press timer button to set up off mode.

Set time : 1 - 2 - 4 (hrs)- off

## 6 Child safety lock

Press and hold the safety-lock button until the indicator is red.

**Unlock:** Press and hold safety lock button again to unlock.

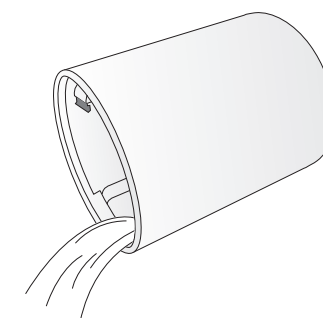
- Lock in the idle state:  
The machine cannot be started.
- Lock in the running state:  
Operation settings cannot be changed.

## Maintainance

- ⚠ Before cleaning, Please be sure to disconnect the power plug from outlet until the machine cooling down.

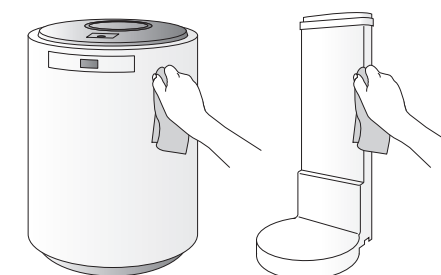
## 1 Caring for the body

- Wipe with a soft, dry cloth. If it is extremely dirty, wipe a cloth which is damped with mild kitchen detergent diluted with warm water.
- Use a vacuum cleaner to remove dust from the ventilation holes.



### ⚠ Attention

- Do not drain with air hole downward.
- Do not maintain it with gasoline, thinner or cleaner.
- Do not allow moisture to enter the plug connector.

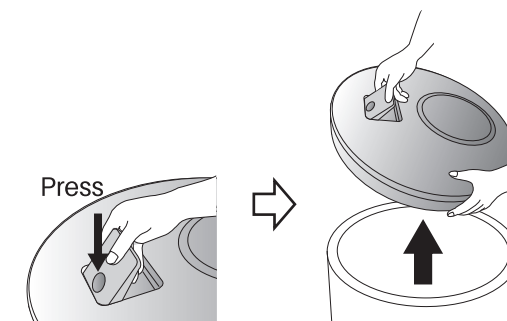


## 2 Caring for cover

- Wipe around the mist outlet with a soft dry cloth.
- Please wipe off the scale (white residue) .

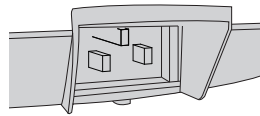
### ⚠ Attention

- Do not use this product without the upper lid installed. Otherwise, it may cause scald.



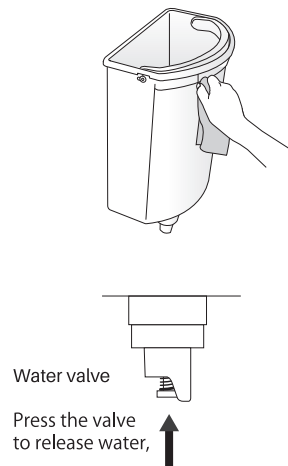
### 3 Caring for the power plug connector

- Please wipe off the dust and dirt with a soft dry cloth. Please maintain the power plug in the same way. Running in dirty condition may cause machine heating and other accidents.



### 4 Caring for the water tank

- Please wipe the water tank with a soft dry cloth.
- In case of scale (white residue), please clean it with a soft sponge dipped with neutral detergent, rinse and wipe dry. Otherwise, the scale will stick on the water tank, resulting in machine fault.
- You may remove the filter and wash away the attached waste with water. Please install it properly after cleaning.

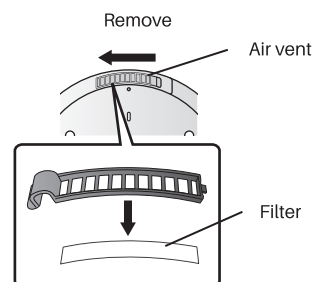


### 5 Caring for the air vent

- Wipe around the mist outlet with a soft dry cloth.
- Please wipe off the scale (white residue) .

#### ! Attention

- Do not use this product without a filter, or it may cause machine fault.
- Do not wash the filter with hot water or dry it with open fire. Otherwise, it may cause deformation and deterioration.

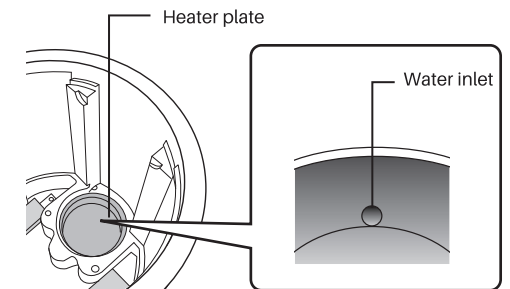


### 6 Caring for the heater plate

- In case of scale (white residue), please clean it with a soft sponge dipped with neutral detergent, rinse and wipe dry. Otherwise, the scale will stick on the heater, resulting in machine fault. If the water inlet is blocked by scale, the machine will not work properly.
- If it is difficult to remove the scale, citric acid can be used by the following method:
  - ① Fill in enough water to cover the heater, and boil the water by directly pressing the power button with the upper lid open.
  - ② Add 20 g of citric acid after the water boils.
  - ③ Turn off the power and leave it for about 2 hours.
  - ④ Pour out boiled water, scrub with sponge, and then rinse thoroughly with clean water. If the heater is not thoroughly flushed, a peculiar smell may be emitted during humidification.

#### ! Attention

- Do not maintain it with cleaner or steel wool. Otherwise, it may damage the fluoride coating.



### Keeping

- After cleaning, please remove all moisture inside and dry it in direct sunlight.
- Please put this product in a carton or cover it with a plastic bag and put it in a dry place to avoid direct sunlight.

#### ! Attention

- Do not bind, forcibly bend or twist the power cord, or the power cord may be broken, resulting in fire and machine fault.
- When storing the product without cushioning material or not put in a carton, please stand the product upright and cover it with a plastic bag.



Troubleshooting

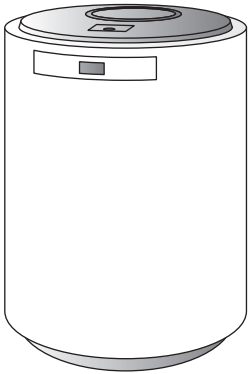
Please confirm the following points before repairing.

Fault	Cause and solution
Not working	<ul style="list-style-type: none"><li>· Is the power plug detached from the socket? →Please insert it fully.</li><li>· Is the magnetic plug detached from the connector? →Please ensure connection.</li></ul>
No humidification	<ul style="list-style-type: none"><li>· Is the water tank empty? →Please add water.</li><li>→After adding water, the display does not show.</li><li>· Clean the filter in the water tank (Please see P08).</li><li>· Reinstall the water tank properly.</li><li>· Is the mist outlet blocked? →Please clean it (Please see P09).</li><li>· No steam is produced within a few minutes after starting operation.</li><li>· Is the water inlet of the heater blocked? →Please clean it (Please see P11).</li></ul>
Peculiar smell	<ul style="list-style-type: none"><li>· Has the water not been changed for a long time? →Please change water.</li><li>· At the beginning of operation, the smell such as smell of resin may be emitted, but it will gradually disappear after using.</li></ul>
Humidity cannot rise	<ul style="list-style-type: none"><li>· Is the room area larger than the applicable area?</li></ul>
Wrong humidity display	<ul style="list-style-type: none"><li>· The humidity sensor is installed inside the machine body, so the humidity displayed may deviate from the actual humidity in the room.</li><li>· Is the air vent blocked?</li><li>· Please clean it</li><li>· If this machine is placed in an environment where the local temperature is too high or too low, such as near a window, it may not accurately perceive the humidity.</li></ul>

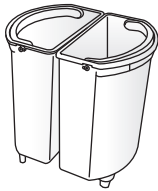
Specifications

Product name	Steam Humidifier
Model	YO-M2
Size	D 340 × W 340 × H 442 mm
Input	120V 50/60Hz
Power consumption	350W-1000W
Water tank capacity	10L
Humidification amount	400mL/h - 1200mL/h
Weight	5.6KG
Fit room size	800 ft2 ~ 1000 ft2

Packaging Content



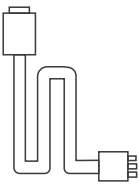
1 Humidifier  
YO-M2



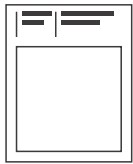
2 Two water tank



3 Steam cylinder



4 Power plug



5 Instruction  
Manual



Warranty service

Y&O guarantees this product against defects in materials and workmanship for a period of 1 years. The warranty period begins on the date of purchase and Y&O requires presentation of the original proof of purchase to ascertain the date. During the warranty period, Y&O will either repair or replace, at its discretion, any defective product at no charge to the owner. Replacement products or repaired parts will be warranted only for the unexpired portion of the original warranty or six months, whichever is greater. This limited warranty does not apply to any defect resulting from negligence, accident, misuse, or any other reason beyond Y&O's reasonable control, including but not limited to: normal wear and tear, negligence or failure to follow the product instructions, improper or inadequate maintenance, calcium deposits or descaling, connection to improper power supply, unauthorized product modification or repair, use for commercial purposes, fire, lightning, flood or other external causes. This warranty is valid only in the country of purchase or in such other countries where Y&O sells or services the same model with identical technical specifications. Warranty service outside the country of purchase is limited to the terms and conditions of the corresponding warranty in the country of service. Should the cost of repairs or replacement not be covered by this warranty, Y&O will advise the owner and the cost shall be charged to the owner. This limited warranty shall be the full extent of Y&O's liability however caused. Except to the extent allowed by applicable law, the terms of this limited warranty do not exclude, restrict or modify the mandatory statutory rights applicable to the sale of this product and are in addition to those rights. If you believe your product is defective, contact Y&O for instructions on how to proceed vvwith a repair.

Contact Us

For any additional information, in case of problems or simply to seek advise, please contact Y&O.

Customer service E-mail: YO-CS@outlook.com

STEAM HUMIDIFIER WARRANTY

Repair

Model No.	YO-M2		
Warranty Period		One year from date of purchase ____Y____M____D	
Customer	Name Address	Tel (      )	
Store	Store Address	Tel (      )	

This document promises to carry out free repairs with the contents described in this document.  
If a failure occurs during the "Warranty period" above, please bring the product and this manual with you to the shop where you purchased the product for repair.

- This document will not be valid if the required fields are left blank. If you do not fill it in, please contact the store where you purchased the product immediately.
- This document will not be reissued, so please keep it in a safe place so as not to lose it.

〈Free repair policy〉

- 1.If the product fails during the warranty period under normal use according to the instruction manual, the label attached to the main unit, etc., we will repair it free of charge.
- 2.If you are unable to request a repair due to moving or gifts, please contact us using the contact information below.
- 3.Even within the warranty period, you will be charged for repairs in the following cases.
  - (a) Failure and damage due to incorrect use, improper repair or modification.
  - (b) Failure or damage due to tipping over after purchase, movement to the place of use, transportation, drop, etc.
  - (c) Failure and damage due to fire, earthquake, wind and water damage, gas damage, lightning strike, other natural disasters, pollution, abnormal voltage, and other external factors.
  - (d) Failure and damage when used for other than general household use (commercial use, mounted on vehicles, ships).
  - (e) If this document is not presented.
  - (f) If the purchase date, customer name, or store name is not entered in this manual, or if the words or phrases have been rewritten.

\* Please note that the personal information (copy of warranty) entered by the customer may be used for free repair support within the warranty period and for subsequent safety inspection activities.  
\* This warranty promises free repair under the conditions and conditions specified in this document. Therefore, this warranty does not limit the legal right of the customer to the person issuing the warranty (guarantee) and other companies, so it is unclear about repairs after the warranty period has passed. In case of, please contact the store where you purchased the product.  
\* Please refer to the instruction manual for the retention period of performance parts for repair and repair after the warranty period.

Use of this product for a method or purpose different from those described in this manual will void the warranty. We are not responsible for any damage caused.