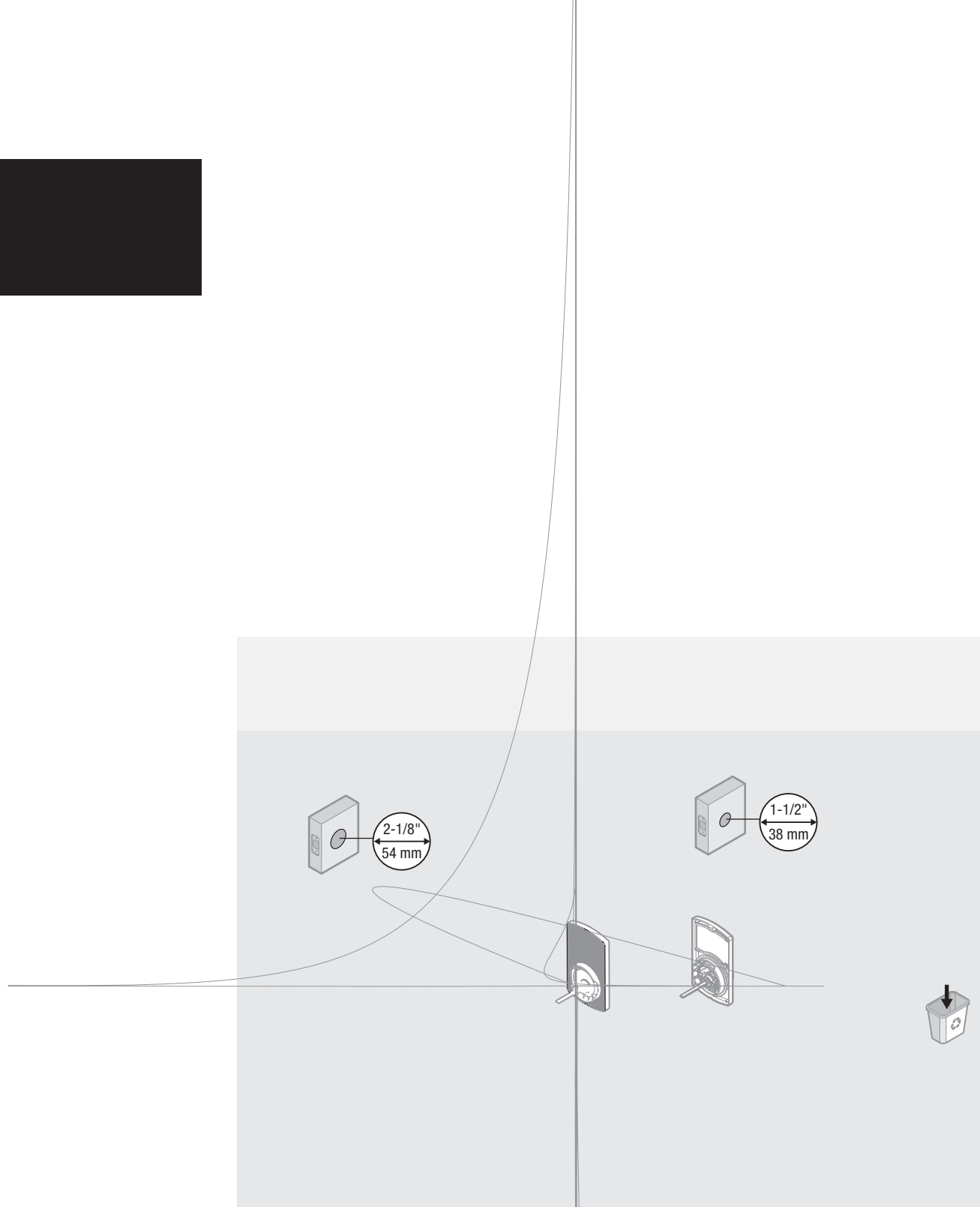


**Kwikset**

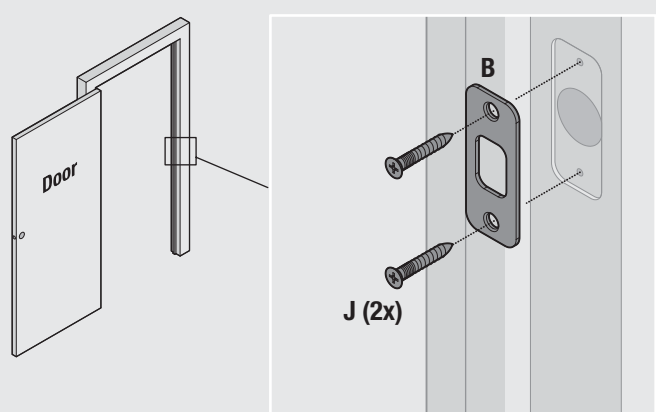
ENGLISH

# Powerbolt 2

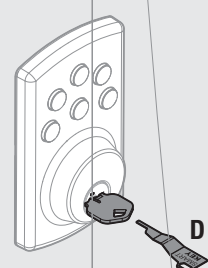
TOUCHPAD KEYLESS ENTRY



## Install strike



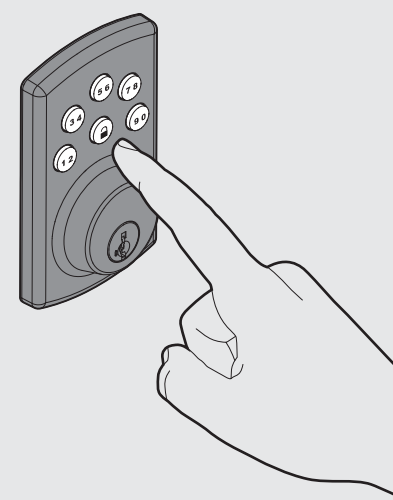
## Re-key the lock



If needed, re-key the lock to work with your existing key. See the supplied SmartKey Re-key instructions for more information.

## Program the lock

Programming instructions are located on the reverse side of this document.



**User Guide**

**Kwikset**  
1-800-327-5625  
www.kwikset.com

Installation instructions are located on the reverse side of this document.

**A Pre-Set Codes**

**CAUTION:** This lock contains a pre-set mastercode (0-0-0-0) and user code (1-2-3-4). Immediately change these to codes of your own.

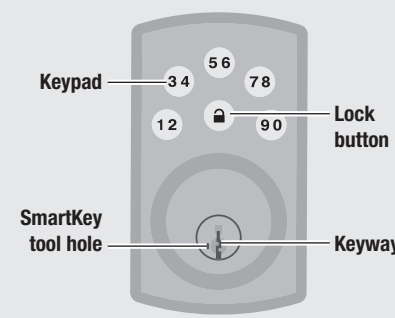
To change the mastercode, follow the steps in “Changing the Mastercode” (Section D-b below).

To change the user code, first delete it by following the steps in “Deleting a Single User Code”. Then, add a new code by following the steps in “Adding User Codes”.

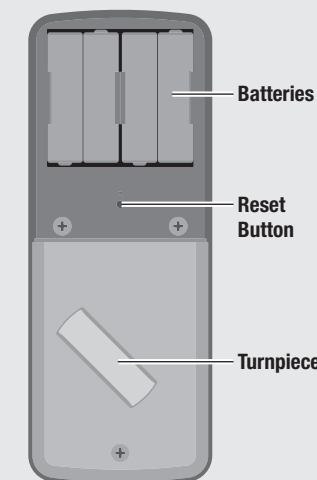
**IMPORTANT:** Please make sure that the door handing code was entered during installation. See step 9 on the reverse side of this document.

**B PowerBolt at a Glance**

**Exterior**



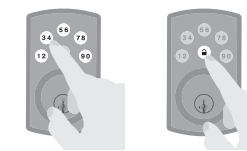
**Interior (cover removed)**



**C Normal Operation**

**Unlocking the Door**

- 1 Enter user code.
- 2 Press Lock button once.



**Locking the Door**

Press Lock button once.



Note: If no user codes are programmed, or if they are disabled, the Lock button will be disabled.

**Incorrect Codes**

Codes Entered	Lock Behavior	Next Step
One incorrect code entered.	Keypad flashes red three times with three beeps.	Re-enter code.
Five incorrect codes entered within one minute.	Keypad flashes red five times with five beeps.	Re-enter code after 45 second keypad lockout.

**D Programming Codes**

**a Programming Information**

**How the Keypad Works**

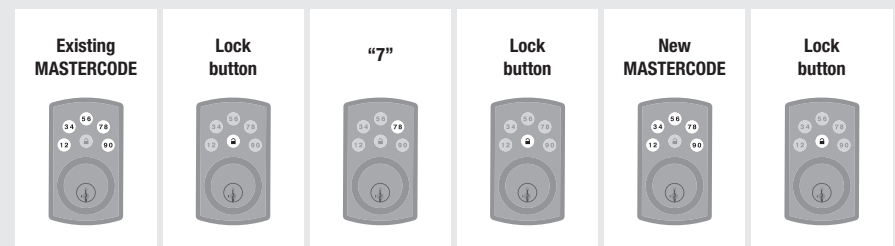
Each button represents two numbers (i.e. 1 and 2 for the first button). You only need to push the button once to get either 1 or 2. For example: If your code is 1-2-5-6-8,



**b Changing the Mastercode**

The mastercode is required to put the lock in programming mode, but it is not used to unlock the door. The lock is programmed with the **default mastercode 0-0-0-0**. **Replace this with a code of your own.** The mastercode must be 4-10 digits.

Keep door open and unlocked during programming.

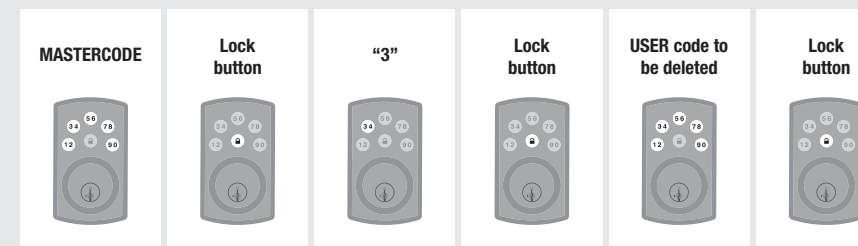


**IF UNSUCCESSFUL**  
Make sure to enter a valid existing mastercode.  
Make sure the new mastercode is between 4 and 10 digits during your next attempt.

**e Deleting a Single User Code**

The lock is programmed with the **default user code 1-2-3-4**. **Delete this code. Add new codes of your own** in section c.

Keep door open and unlocked during programming.



**IF UNSUCCESSFUL**  
Make sure to enter a valid mastercode and existing user code.  
**TEST CODE**  
While the door is open and locked, test the user code to make sure it no longer unlocks the door.

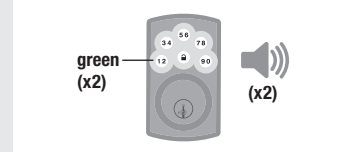
**Programming Behavior**

**Programming Mode Timeout**

The keypad will flash amber slowly while the lock is in programming mode. If no button is pressed for 10 seconds, the system will time out and you will need to restart the procedure.

**Successful Programming**

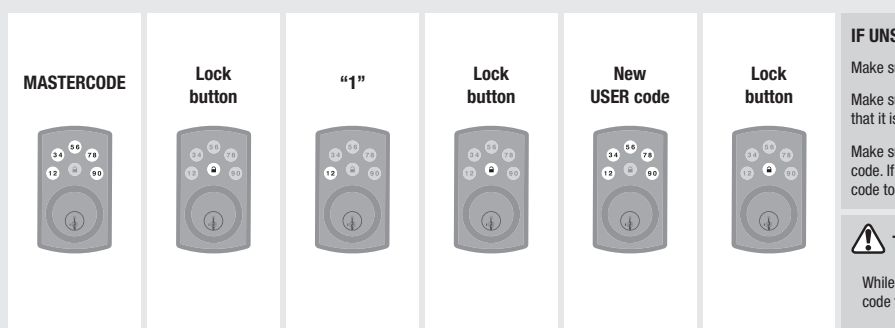
The keypad will flash green twice, and you will hear two beeps\*.



**c Adding User Codes**

Each user code must be a unique code between 4 and 10 digits. A total of 6 user codes may be programmed. Note: It is not recommended to program a user code that is the same as the mastercode.

Keep door open and unlocked during programming.

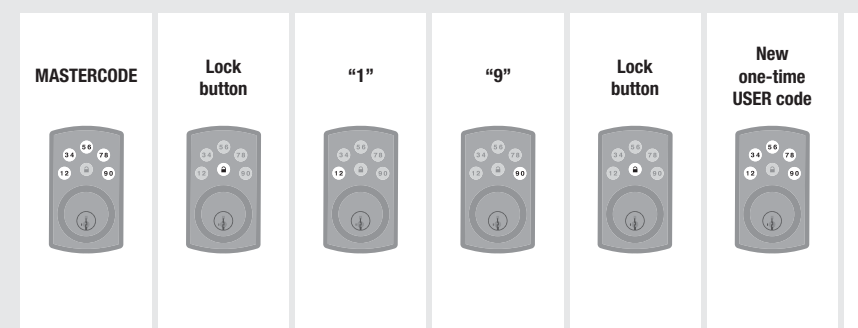


**IF UNSUCCESSFUL**  
Make sure to enter a valid mastercode.  
Make sure the user code is not a duplicate and that it is between 4 and 10 digits.  
Make sure the lock has room for an additional code. If all user code positions are filled, delete a code to make room for the new one.  
**TEST CODE**  
While the door is open and locked, test the user code to make sure it unlocks the door.

**f Adding a One-Time User Code**

A one-time user code may be used only once and will be deleted from the lock immediately after use. The one-time user code should not be the same as an existing user code.

Keep door open and unlocked during programming.

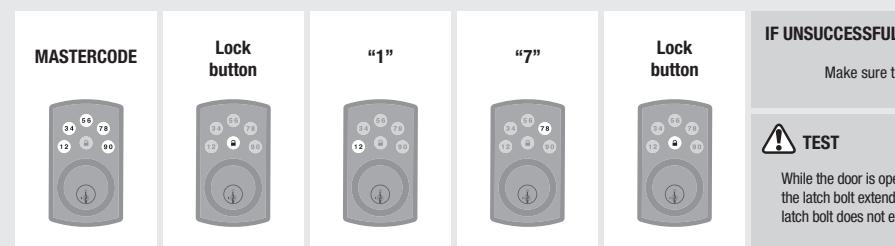


**IF UNSUCCESSFUL**  
Make sure to enter a valid mastercode.  
Make sure the one-time user code is between 4 and 10 digits.

**d Disabling/Enabling User Codes**

Perform this procedure once to disable all user codes, and repeat the procedure to re-enable user codes. The lock button and auto-lock function will be disabled until user codes are re-enabled, and the lock can only be operated by the key and turnpiece.

Keep door open and unlocked during programming.



**IF UNSUCCESSFUL**  
Make sure to enter a valid mastercode.  
**TEST**  
While the door is open and unlocked, press the Lock button. If the latch bolt extends to lock, the user codes are enabled. If the latch bolt does not extend to lock, the user codes are disabled.

**g Deleting All User Codes**

The lock button and auto-lock function will be disabled until a new code is added, and the lock can only be operated by the key and turnpiece.

Keep door open and unlocked during programming.



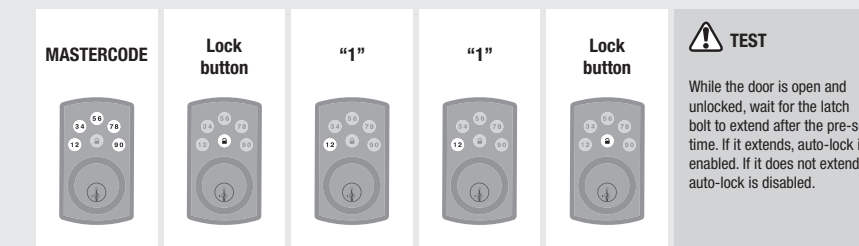
**IF UNSUCCESSFUL**  
Make sure to enter a valid mastercode.  
**TEST**  
While the door is open and unlocked, press the Lock button. If the latch bolt does not extend to lock, then all codes have been successfully deleted.

**E Auto-Lock and Mute Settings**

**a Enabling/Disabling Auto-Lock**

This feature is not enabled by default. When enabled, the door will automatically lock after 30 seconds. This time can be adjusted in section b. After auto-lock is enabled, repeat this procedure to disable it as needed.

Keep door open and unlocked during programming.

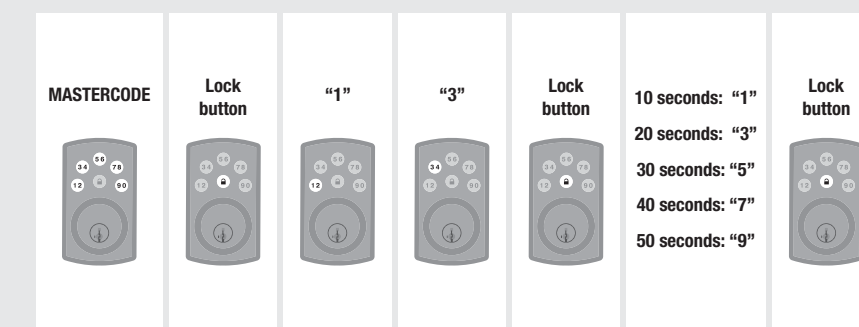


**TEST**  
While the door is open and unlocked, wait for the latch bolt to extend after the pre-set time. If it extends, auto-lock is enabled. If it does not extend, auto-lock is disabled.

**b Setting Auto-Lock Time Delay**

Perform this procedure to change the pre-set 30 second time delay of the auto-lock feature.

Keep door open and unlocked during programming.

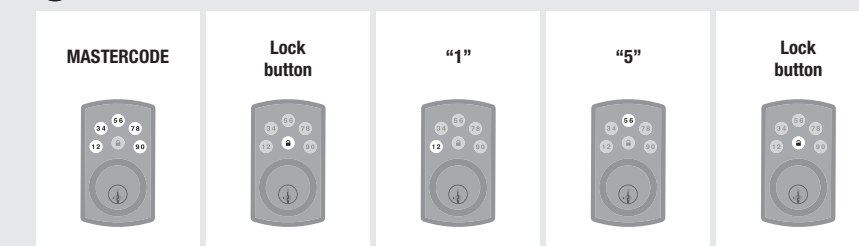


**c Mute**

Perform this procedure to mute the beeping sound heard during programming and normal operation. Repeat the procedure to unmute the beeping sound.

**CAUTION:** Low battery indicators and system alerts will not be heard while the system is muted.

Keep door open and unlocked during programming.



**F Regulatory Compliance**

This product complies with standards established by the following regulatory bodies:

- Federal Communications Commission (FCC)
- Industry Canada

**FCC**

This device complies with Part 15 of the FCC Rules. Operation is subject to the following two conditions: (1) this device may not cause harmful interference, and (2) this device must accept any interference received, including interference that may cause undesired operation.

This equipment has been tested and found to comply with the limits for a Class B digital device, pursuant to Part 15 of the FCC Rules. These limits are designed to provide reasonable protection against harmful interference in a residential installation.

This equipment generates, uses, and can radiate radio frequency energy and, if not installed and used in accordance with the instructions, may cause harmful interference to radio communications. However, there is no guarantee that interference will not occur in a particular installation. If this equipment does cause harmful interference to radio or television reception, which can be determined by turning the equipment off and on, the user is encouraged to try to correct the interference by one or more of the following measures:

- Reorient or relocate the receiving antenna.
- Increase the separation between the equipment and receiver.
- Connect the equipment into an outlet on a circuit different from that to which the receiver is connected.
- Consult the dealer or an experienced radio/TV technician for help.

**IMPORTANT!** Changes or modifications not expressly approved by the manufacturer could void the user's authority to operate the equipment.

**Industry Canada**

This device complies with Industry Canada licence-exempt RSS standard(s). Operation is subject to the following two conditions: (1) this device may not cause interference, and (2) this device must accept any interference, including interference that may cause undesired operation of the device.

\*Beeping sound will not be heard when the lock is muted.

**G System Alerts**

Alert	Reason	Solution
Keypad flashes green two times with two beeps*.	Successful programming.	N/A
Keypad flashes red three times with three beeps*.	Door jammed while attempting to lock.	Manually re-lock door. If needed, reposition strike.
	Door handing code has not been entered.	Enter door handing code. See step 9 of the installation guide.
	No user code programmed or user codes are disabled.	Program at least one user code, or re-enable user codes.
Keypad flashes red five times with five beeps*.	Unsuccessful programming.	Attempt programming procedure again.
	Incorrect user code entered.	Re-enter user code.
Keypad flashes red 10 times with 10 beeps*.	Five incorrect user codes entered within one minute.	Re-enter user code after 45-second keypad lockout.
Keypad flashes red 10 times with 10 beeps*.	Low battery.	Replace batteries.

\*Beeping sound will not be heard when the lock is muted.

**H Troubleshooting**

**a. The turnpiece cannot rotate or operate the lock.**

Remove and reinstall the lock, making sure that the tailpiece is horizontal in step 6B and 8C.

**b. The lock cannot be locked or unlocked by the keypad.**

Make sure the lock is programmed with at least one code and that the user codes are not disabled. If needed, perform a factory reset and enter the door handing code (see "Factory Reset").

**c. The keypad doesn't respond when touched (no lights are visible and no beeping is heard).**

Make sure the cables are properly connected, and make sure the batteries are new and installed correctly.

**d. After the lock has been working normally, the latch bolt locks up and the turnpiece will not rotate.**

Re-enter the door handing code, using your mastercode. See "Factory Reset," steps 2 and 3.

**e. The door can be locked with the Lock button, but the user code will not unlock the door.**

Make sure the user code is correct and that the Lock button is pushed after entering the user code. If the door still won't unlock, use a key to unlock the door. Call technical support for further troubleshooting.

**f. When the door is closed and the Lock button is pressed to lock the door, the lock emits a system alert. When the door is open and the Lock button is pressed to lock the door, there is no system alert.**

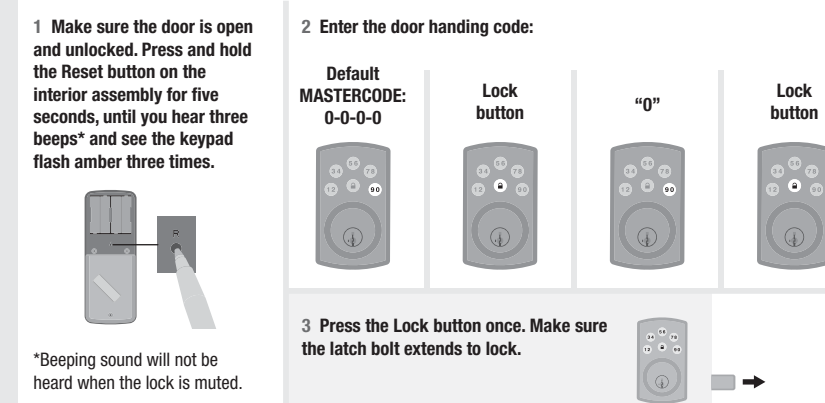
Make sure that the hole in the door frame behind the strike is drilled at least 1" (25 mm) deep. Also make sure the strike plate is aligned with the latch bolt. If needed, reposition the strike.

**I Factory Reset**

A factory reset will delete all codes associated with the lock, and the default mastercode (0-0-0-0) and user code (1-2-3-4) will be restored.

**CAUTION:** Replace the pre-set codes with codes of your own.

Note: Auto-lock will be disabled after a factory reset.



\*Beeping sound will not be heard when the lock is muted.

**J Important Safeguards**

1. Read all instructions in their entirety.
2. Familiarize yourself with all warning and caution statements.
3. Remind all family members of safety precautions.
4. Restrict access to your lock's interior assembly and routinely check your settings to ensure they have not been altered without your knowledge.
5. Protect your user codes and mastercode.
6. Dispose of used batteries according to local laws and regulations.

**CAUTION:** Prevent unauthorized entry. This lock has a pre-set user code and mastercode. Upon installation and set-up, replace both of these codes with your own. Since anyone with access to the interior assembly can reset the lock and change the user codes, you must restrict access to the interior assembly and routinely check the user codes to ensure they have not been altered without your knowledge.

**WARNING:** This Manufacturer advises that no lock can provide complete security by itself. This lock may be defeated by forcible or technical means, or evaded by entry elsewhere on the property. No lock can substitute for caution, awareness of your environment, and common sense. Builder's hardware is available in multiple performance grades to suit the application. In order to enhance security and reduce risk, you should consult a qualified locksmith or other security professional.