



## Recycle Disassemble Instruction (Dismantled Information)

Requirements according to ANNEX VII of DIRECTIVE 2012/19/EU  
on waste electrical and electronic equipment (WEEE)

### Materials and components with hazardous content

LCDs may contain hazardous substances like Pb and BFRs which are covered by exemptions under the RoHS directive. However, the majority is present in the printed circuit boards assembly. In order to reduce emissions as much as possible, a complete disposal of the old appliance is required. This treatment may only be performed in authorized handling plants.






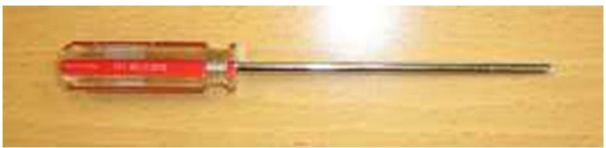

Product Name: LCD Monitor

Model No.: GW2491,GW2491E,GW2491T,BL2491,BL2491T



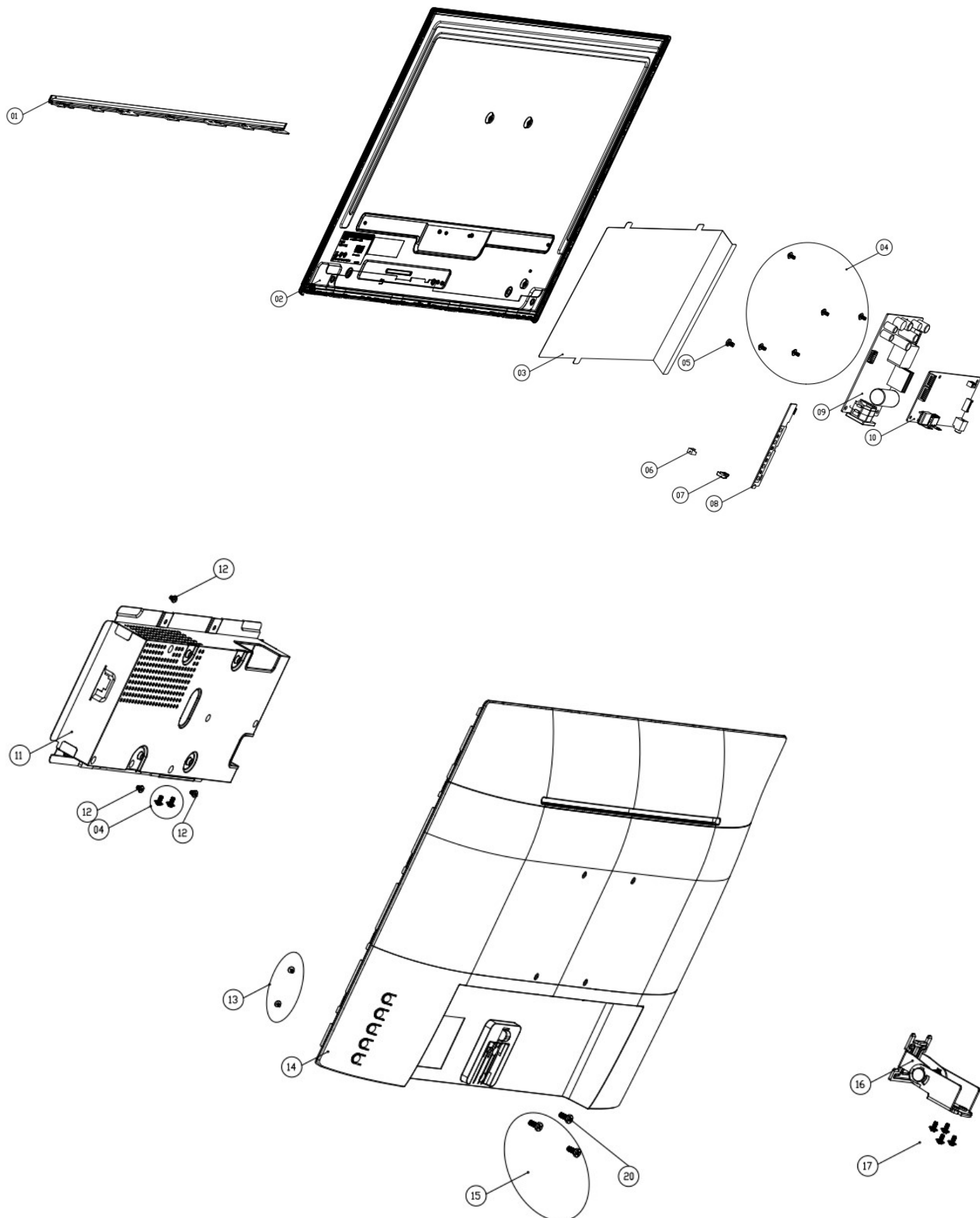


## 1.Disassembly Tools

Tool	picture
Philips Screwdriver for M3 Screw	 A red-handled Philips screwdriver with a silver metal shaft and a black Phillips tip, lying horizontally on a light brown wooden surface.
Nosed Pliers	 A pair of red-handled long-nose pliers with silver metal jaws, lying horizontally on a light brown wooden surface.
Diagonal Cutting Pliers	 A pair of red-handled diagonal cutting pliers with silver metal jaws, lying horizontally on a light brown wooden surface.
Slotted screwdriver	 A green-handled slotted screwdriver with a silver metal shaft and a flat metal tip, lying horizontally on a light brown wooden surface.
Six Point Sockets	 A yellow-handled screwdriver with a silver metal shaft and a six-point star-shaped tip, lying horizontally on a light brown wooden surface.
Philips Screwdriver for M2.5 Screw	 A red-handled Philips screwdriver with a silver metal shaft and a black Phillips tip, lying horizontally on a light brown wooden surface.
Knife	 A silver metal folding knife with a black handle and a silver blade, lying horizontally on a light brown wooden surface.



## 2.Product exploded view



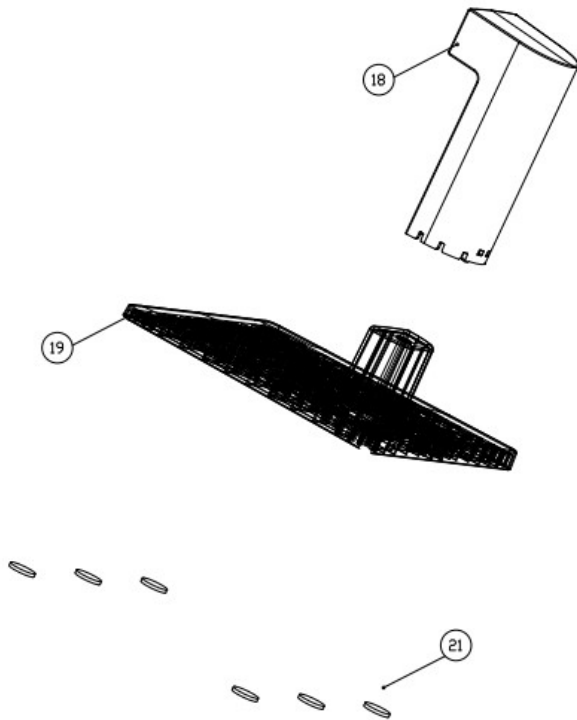
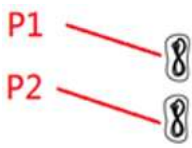


Table 1 Disassembly parts list

Item	Description	Item	Description
1	Deco	21	Foot pad
2	Panel		
3	Mylar		
4	Screw		
5	Screw		
6	Rubber lens-cover		
7	Lens		
8	Key board		
9	Power board		
10	Main board		
11	Main frame		
12	Screw		
13	Screw		
14	Rear cover		
15	Screw		
16	Hinge		
17	Screw		
18	Stand		
19	Base		
20	Screw		



3.External cable



External cable			
Item	Description	Qty	Unit
P1	Power cable	1	PCS
P2	HDMI cable	1	PCS

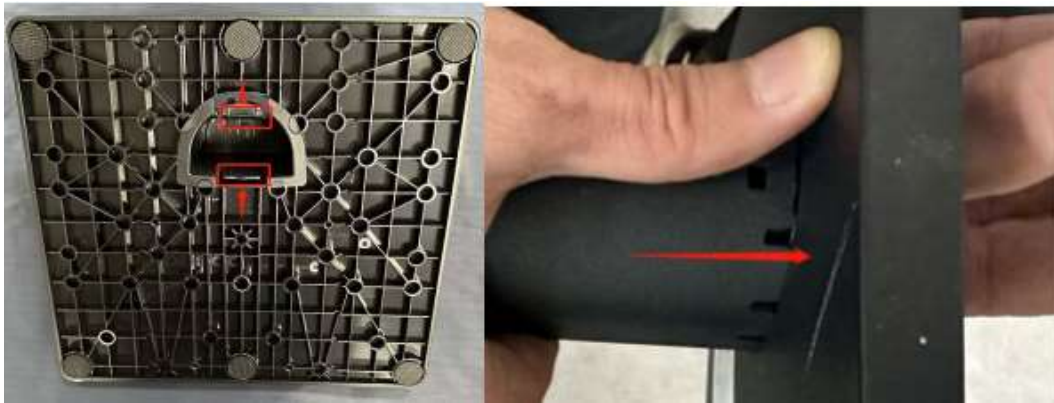


## 4.Product Disassembly

Place the monitor face down on a smooth surface first.

### 1. Remove the stand and base.

- a) Hold the both protruding clips located on the base and squeeze them inward without releasing, at the same Time, use your thumb with the other hand against the base, push it downward until the base detached.



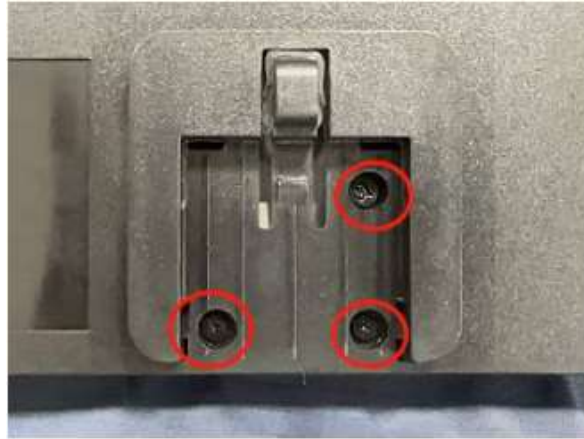
- b) Use the sharp object to press the protruded object, and hold the stand with the other hand to push it downward until the stand detached.





## 2. Remove the back cover.

a) Release the screws first.



b) Use the tool (not provided) starting from the opening to open all the latches of back cover slowly and carefully.



c) Disconnect cable to remove back cover.

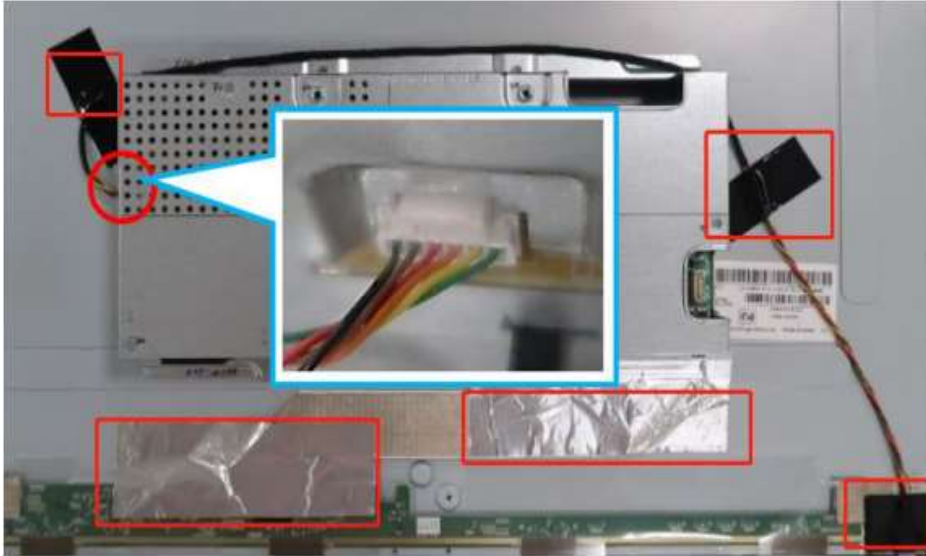




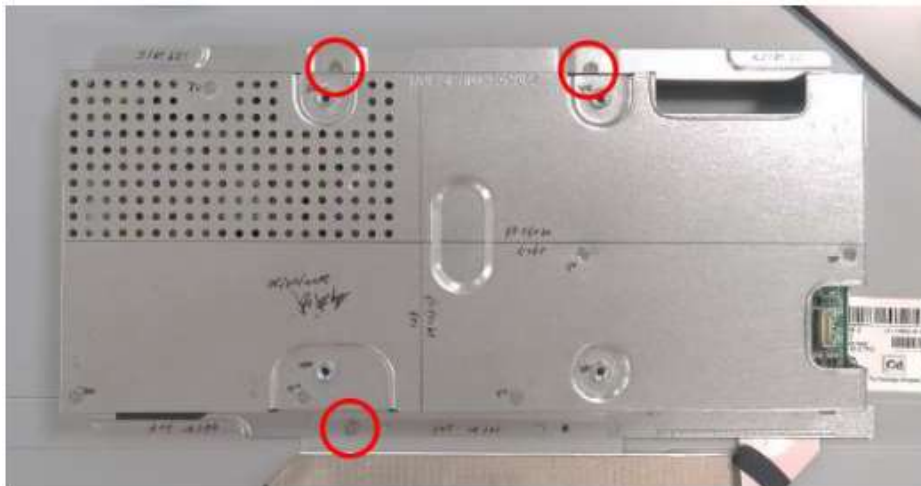


### 3. Remove main frame from the panel.

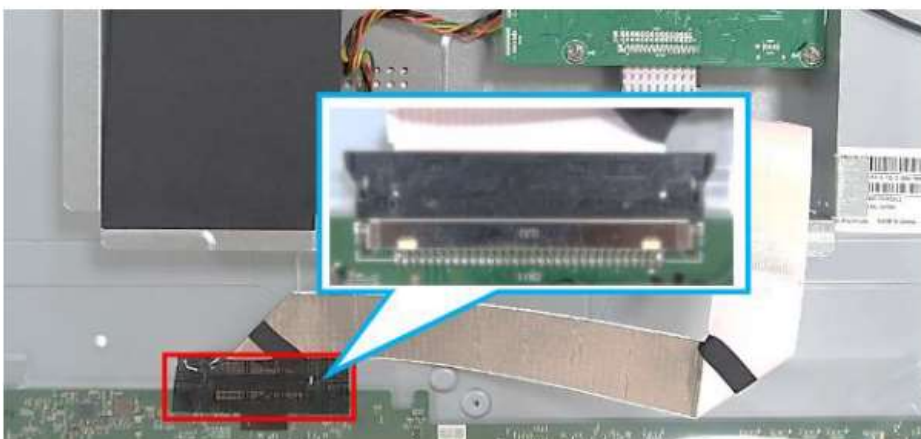
a) Tear out tapes and mylar, then disconnect all the cables.



b) Release all the screws.



c) Lift up main frame and disconnect cable to remove it.





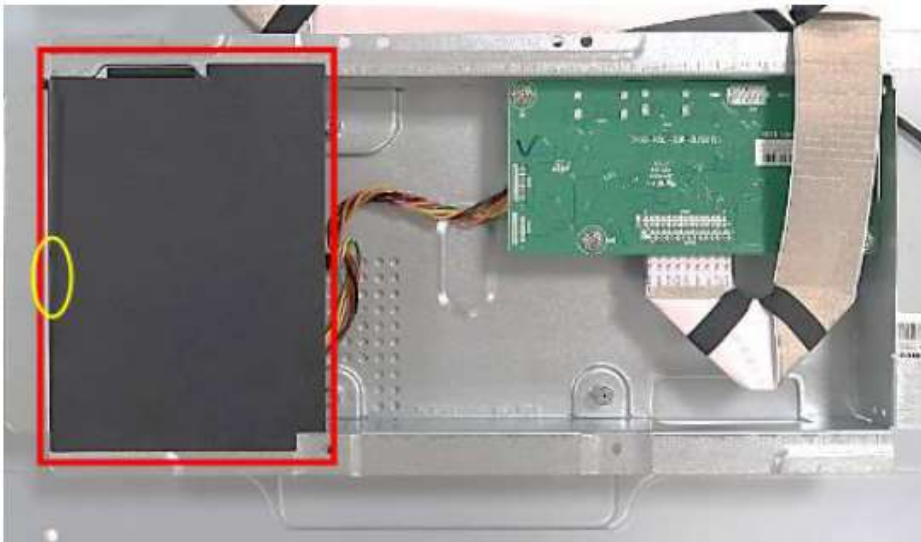


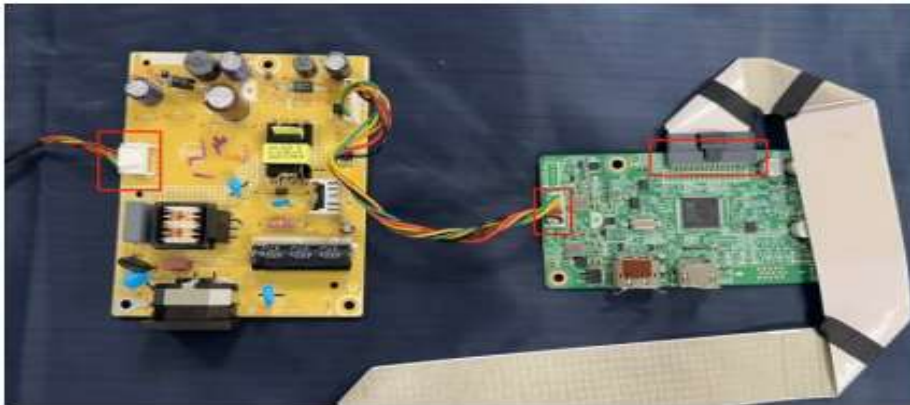
**4. Take out bezel from panel.**



**5. Separate the board from the main frame.**

Turn over the main frame, remove mylar and release all the screws to separate boards from main frame.





6. Take out the key board from back cover.  
( Do not miss the part remarked in yellow )



## 5.Recycle characteristics

Recycle characteristics Part	No.
Reuse	-
Recycle	1,3,4,5,6,7,11,12,13,14,15,16,17,18,19,20,21
WEEE annex VII	2,8,9,10, P1~P2
Recovery	-
Disposal	-

## 6.Disassembly Time

Total time: 30 minutes