

Size : 75*75MM

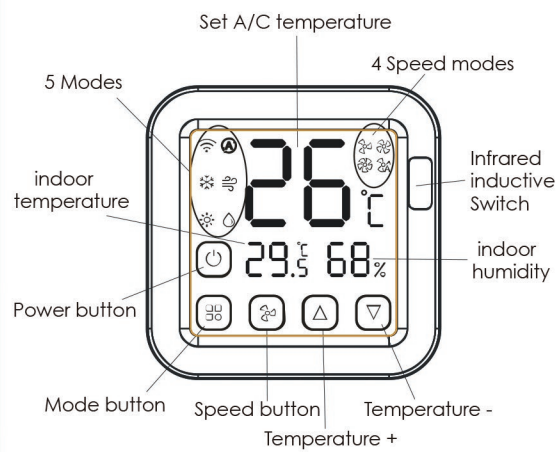
Smart AC Controller

USER MANUAL

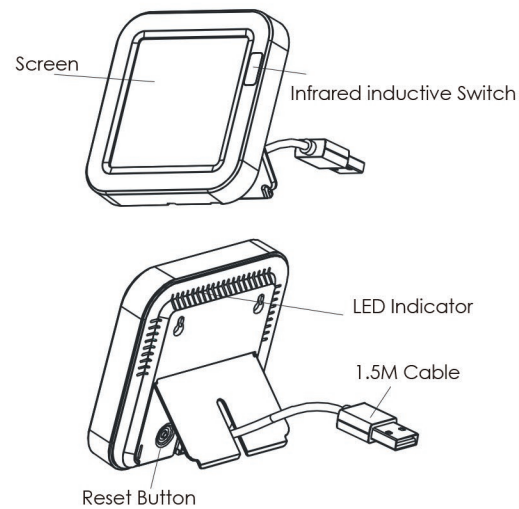


Model: S16Pro

Product Presentation:



-2-



-3-

Product Specification

Size: 80*80*16mm USB Cable: 1.5M length
Product weight: 104g
Input: DC 5V/1A
Standby Power: ≤ 0.4W
Infrared Frequency: 38KHz
Infrared Range: ≤ 12 Meters
Bluetooth: BLE 4.2
Wi-Fi Protocol: 2.4GHz IEEE 802.11b/g/n
Temperature Measure Range: 0C ~ 60C
Temperature Accuracy: ±1 C
Humidity Measure Range: 0% RH~99% RH
Humidity Accuracy: ± 5% RH

-4-

Checklist before using the device:

- Your smartphone has connected to a 2.4GHz Wi-Fi network.
- You have input the correct Wi-Fi password.
- Your smartphone must be Android 4.4 + or iOS 8.0 +.
- Your Wi-Fi router is MAC-open.
- If the numbers of devices connected to Wi-Fi router reach the limit, you can try to disable a device to vacate the channel or try with another Wi-Fi router.

-5-

How to set up:

1. Use your smartphone to scan QR code, or search "Smart Life" app in Google Play Store or APP Store to download and install.



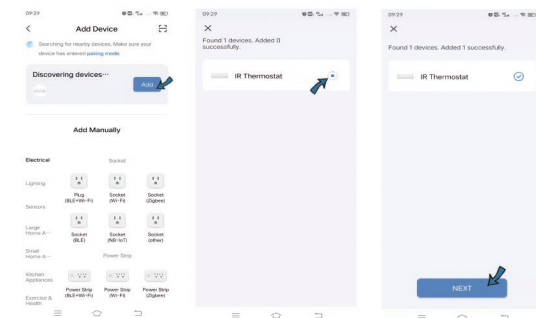
2. Create account with your mobile number and authentication code.

3. Connect your mobile to your Wi-Fi router, connect the USB cable to USB power socket, click "+" in the upper right corner of homepage or click "Add Device".

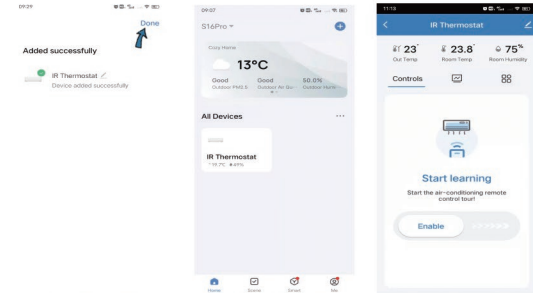
-6-

4. 1) Bluetooth Mode:

The app will advise you to turn on the bluetooth in your mobile, then the app will pop up a window, click "Add", it will discover and connect automatically.



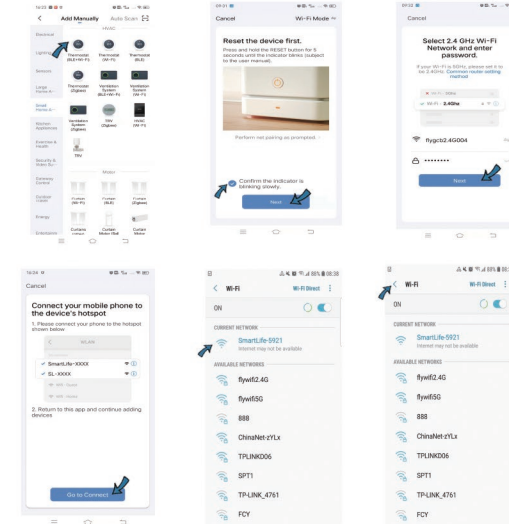
-7-



2) Wi-Fi Mode:

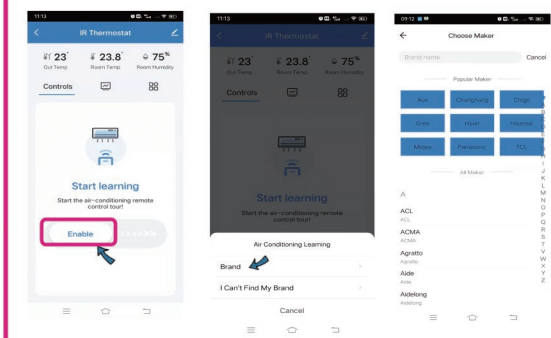
Select "Thermostat (BLE + Wi-Fi)" from "Small Home Appliance", make sure the LED indicator is blinking slowly, if not, hold the reset button for about 5s till indicator is blinking slowly, enter Wi-Fi name and password. Connect your mobile to device's hotspot: "SmartLife-XXXX", then click to return to App interface, it will connect wifi automatically.

-8-

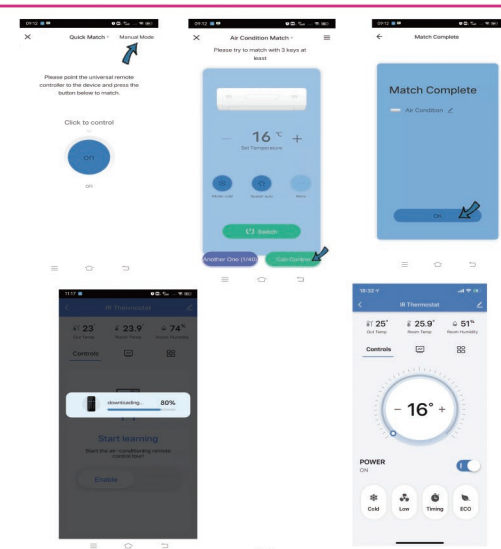


-9-

5. Start learning the A/C code, please slide "Enable" bar towards the right, it will pop up a window, select the brand of your A/C, choose "Manual Mode", please try to match at least 3 buttons to check whether the A/C reacts properly, if yes, match completed. You can control the A/C on the app now, and can also control A/C by pressing the touch buttons on the screen.

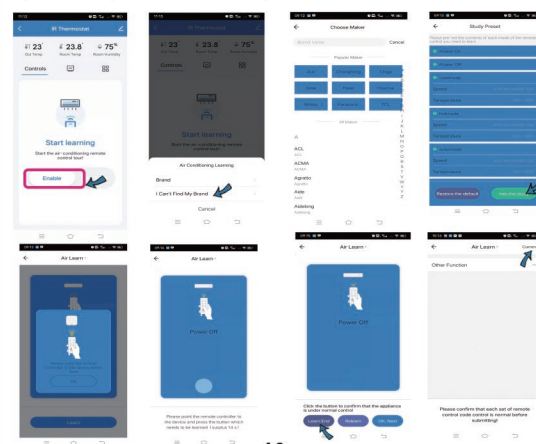


-10-



-11-

6. If you can not find your A/C brand, you can learn the buttons of the remote control of other brands, after button learned, please click it to confirm the A/C is under control. If yes, then you can control your A/C.

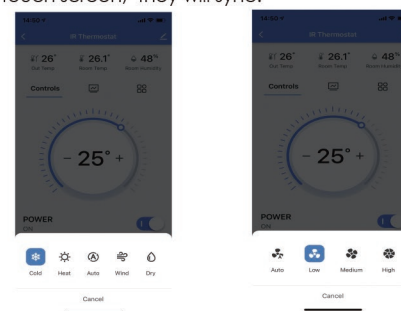


-12-

Functions

1. Working mode and Wind Speed

You can adjust working mode, wind speed, AC temperature and power on/off in the app or manually press the buttons on the touch screen, they will sync.



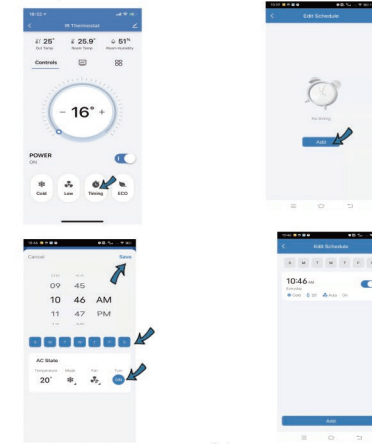
Working mode

Wind Speed

-13-

2. Timing

Click "Timing", select the specific time and week to turn on/off the A/C.



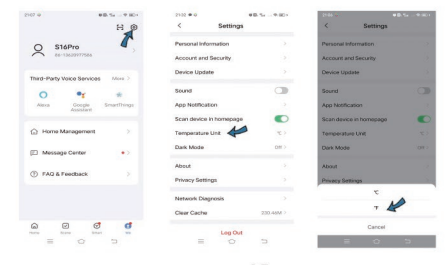
-14-

3. Backlight Display

When the object pass through the infrared inductive switch less than 5CM away, or manually press the touch buttons, the backlight will be triggered, and the temperature and humidity shown on screen and app will be locked for 2 mins.

4. Temperature Unit Switch

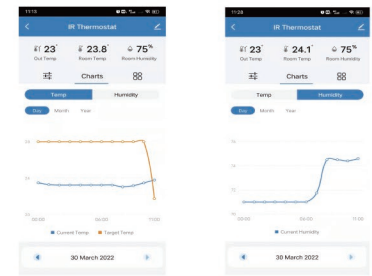
You can switch temperature unit between Celsius and Fahrenheit, the temperature value will change accordingly after switch, and will sync in the app and on the screen.



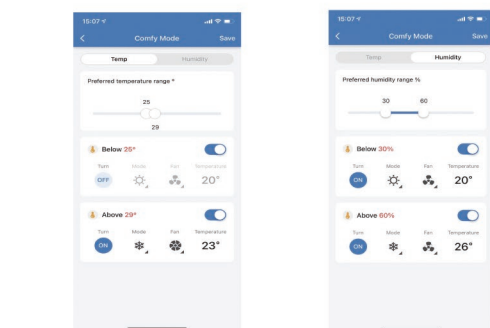
-15-

5. Temp and humidity records

You can view the records of temp and humidity stored in 1 year.



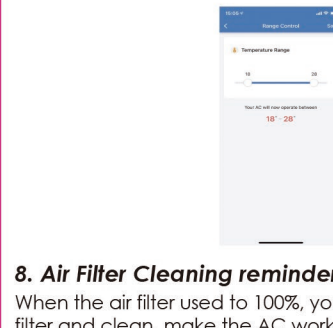
-16-



-17-

7. Range Control

You can preset the AC temperature range, then the AC will operate between the range.



-18-

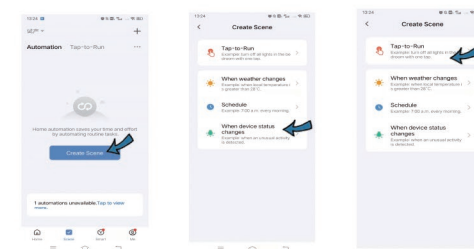
8. Air Filter Cleaning reminder

When the air filter used to 100%, you have to remove the air filter and clean, make the AC works properly.



9. Smart Scene

You can create smart scene for your specific needs.



10. Share devices

You can share your added AC Controller with your family members or friends, so they can also control remotely.

11. Third-party Voice Control

Works with amazon alexa and google assistant.

-19-

FAQ

1. About 30 minutes after Wi-Fi configuration completed, the temperature and humidity is closer to actual ambient environment, so the readings are more accurate.

2.1) When the backlight is off, the screen will display real-time temperature and humidity, if the ambient temperature change ≥ 0.3C, or the humidity change >3%, the screen will immediately synchronize the temperature and humidity with the APP. Otherwise, it will take 1 min to synchronize the temperature and humidity with the APP.

2) When the backlight is triggered, the temp and humidity on the screen will be locked for 2 mins, if backlight is triggered again within 2 mins, the temperature and humidity on the screen will be locked for no more than 15 mins, the temp and humidity display will return to normal after unlocking.

3. After you matched the AC buttons successfully in app, and its code library is downloaded, you can still control the AC by pressing the touch buttons on the screen when the network Smart AC Controller connected is offline.

4. Please keep it away from any heat source.

-20-

FCC Statement

This equipment has been tested and found to comply with the limits for a Class B digital device, pursuant to part 15 of the FCC rules. These limits are designed to provide reasonable protection against harmful interference in a residential installation. This equipment generates, uses and can radiate radio frequency energy and, if not installed and used in accordance with the instructions, may cause harmful interference to radio communications. However, there is no guarantee that interference will not occur in a particular installation. If this equipment does cause harmful interference to radio or television reception, which can be determined by turning the equipment off and on, the user is encouraged to try to correct the interference by one or more of the following measures:

- Reorient or relocate the receiving antenna.
- Increase the separation between the equipment and receiver.
- Connect the equipment into an outlet on a circuit different from that to which the receiver is connected.
- Consult the dealer or an experienced radio/TV technician for help.

To assure continued compliance, any changes or modifications not expressly approved by the party.

Responsible for compliance could void the user's authority to operate this equipment. (Example- use only shielded interface cables when connecting to computer or peripheral devices).

This equipment complies with Part 15 of the FCC Rules. Operation is subject to the following two conditions:

- (1) This device may not cause harmful interference, and
- (2) This device must accept any interference received, including interference that may cause undesired operation.

FCC Radiation Exposure Statement:

The equipment complies with FCC Radiation exposure limits set forth for uncontrolled environment. This equipment should be installed and operated with minimum distance 20cm between the radiator and your body.

.