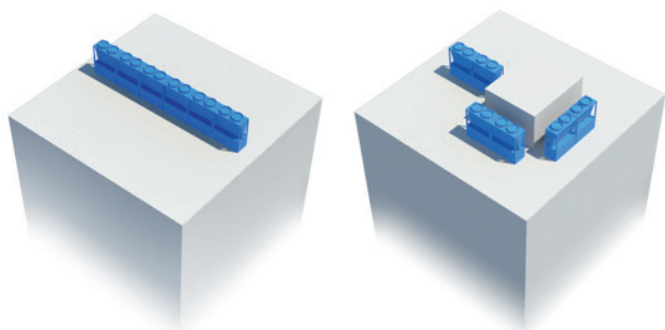




YORK® YCAE MODULAR AIR-COOLED SCROLL CHILLERS / HEAT PUMPS

Maximize Efficiency through Modularity

With up to eight, independently operable modules in one water system and a built-in main water pipe for easy field installation, the YORK® YCAE provides a simplified, highly configurable installation.



LOCATION-FRIENDLY CONFIGURATION OPTIONS

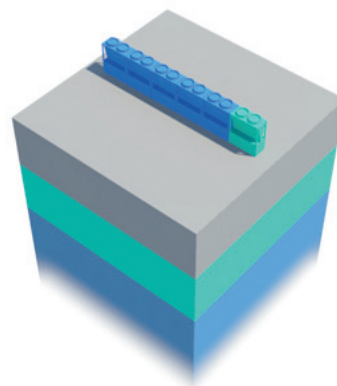
Installation flexibility for modular chillers will allow you to use all available space, with many possible configurations (linear, parallel, star, etc.).

EASIER PRODUCT STOCKING

Modular chillers are your solution. Limited numbers of module configurations allow the distribution channel to keep modules in stock.

SIMPLIFIED SYSTEM EXPANSION

Connecting the water piping and cables, installing the sensors and bringing power to additional modules is quick and easy.

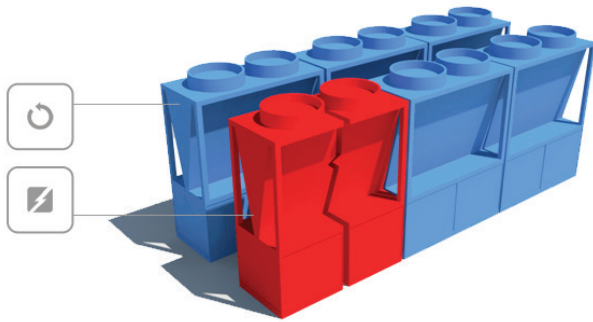


STAGED INVESTMENT FOR GROWTH

Buildings being constructed or occupied in phases do not need full cooling/heating capacity at the start. Modular chillers allow you to stage the investment by combining modules to obtain the required capacity.

Achieve Greater Reliability

Independent operation, advanced system sequencing and intelligent defrost features contribute to industry-leading reliability and consistent, long-term operation.



FULL REDUNDANCY WITH EASY PARTS MANAGEMENT

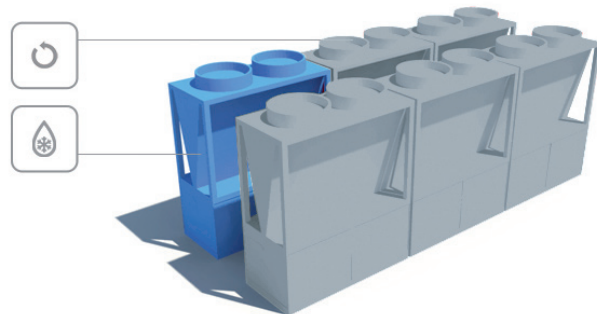
A central controller allows you to decide the quantity of modules active at any time. If a module requires maintenance, other modules in the system will continue to operate, ensuring minimal capacity loss.

INTUITIVE CENTRAL CONTROLLER

Modular units, which can manage up to eight modules per system, are controlled with a single, central controller. The central controller sequences the units to even out run times and prolong the life of the chiller.

SMALLER COMPONENTS FOR REDUCED SOUND

Modular design uses low-capacity modules installed together. Components are carefully selected based on performance, reliability and low noise attributes. When comparing modular systems with standard chillers, modular chillers provide a reduced sound level.



INTELLIGENT DEFROST FOR HEAT PUMPS

For proper operation of our air-to-water heat pumps, regular defrosting must occur. The central controller optimizes the sequencing of the defrost cycle, allowing only one module to defrost at a time. This allows the remaining modules to continue to provide heating.

Performance Data

MODEL		YCAE040SME	YCAE040RME	YCAE065SME	YCAE065RME
Cooling capacity	kW	41	41	65	65
Heating capacity	kW	-	44.5	-	66
Refrigerant charge	kg	2x7	7.2/7.3	2x9	2x9
Sound level	dB	65	65	69	69
Compressor	Type	Scroll	Scroll	Scroll	Scroll
	No	2	2	2	2
Power input	Cooling	kW	13	13	19.4
	Heating	kW	-	13.5	-
	Power input	kW	0.37x2	0.37x2	0.9x2
Fan	Fan No.	2	2	2	2
	Air flow	m3/h	8500x2	8500x2	13000x2
Water-side heat exchanger	Water pressure drop	kPa	50	50	50
	Water pipe size	mm	114	114	114
	Pipe connection	Clamp	Clamp	Clamp	Clamp
	Water flow	m3/h	7.1	7.1	11.2
Max. operating current	A	34	34	50	50
Dimensions	Length	mm	1600	1600	2000
	Width	mm	1000	1000	1000
	Height	mm	2065	2065	2100
Weight	Shipping weight	kg	690	720	800
	Operating weight	kg	760	790	880

Model Nomenclature

YCAE YORK® Air Cooled
Modular Chiller/Heat Pump

040 Nominal Cooling Capacity kW

R R: Heat Pump
S: Cooling only

M M: modular unit

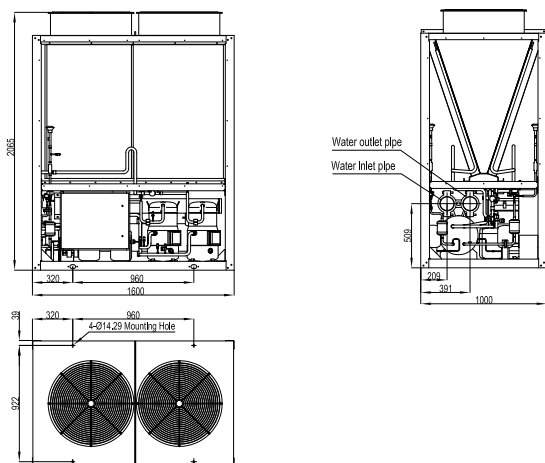
E Refrigerant
E: R410A

50 Power supply
50: 380V/3Ph/50Hz
53: 400V/3Ph/50Hz

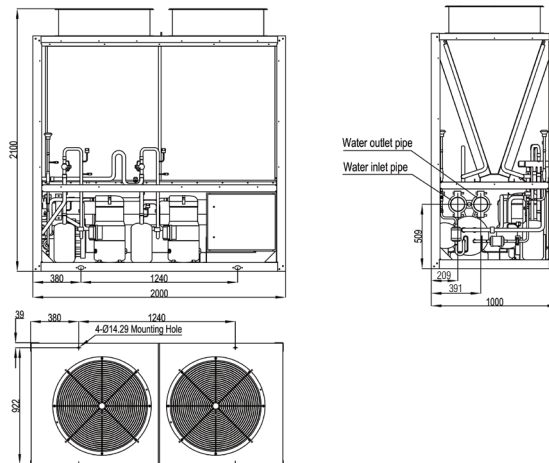
OBE Code
OBE: GB code

Dimensions

YCAE 040R/SE



YCAE 065R/SE



Johnson Controls, the Johnson Controls logo and YORK® are registered trademarks of Johnson Controls in the United States of America and other countries.
©2016 Johnson Controls, P.O. Box 423, Milwaukee, WI 53201 All rights reserved worldwide Printed in USA PUBL-8362-A-0916 MEA version.

FOR MORE INFORMATION, VISIT JOHNSONCONTROLS.COM

