

Size : 90*63 MM

USB Multi-mode Gateway

USER MANUAL



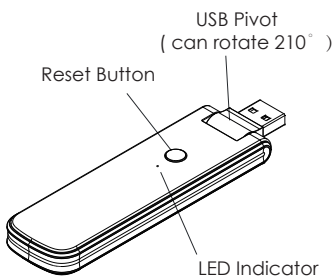
Model: UG03

Thanks for choosing our product!

With this multi-mode gateway, you can add different types of tuya zigbee and bluetooth devices, and control them remotely on your mobile app.

Please read manual carefully before use and keep it for future reference.

Product Presentation:



-2-

Product Specification

Size: 114*30.4*10 mm

USB Input: DC 5V/1A

Indicator: Red(Wi-Fi) Blue(Zigbee+BLE)

Wi-Fi : 2.4GHz IEEE 802.11b/g/n

Zigbee Frequency: IEEE 802.15.4

Bluetooth : Low-energy 5.0

-3-

Checklist before using the device:

- Your smartphone has connected to 2.4GHz Wi-Fi network.
- Input the correct Wi-Fi password.
- Your smartphone must be Android 4.4 + or iOS 8.0 +.
- Your Wi-Fi router is MAC-open.
- If the numbers of devices connected to the Wi-Fi router reach the limit, try to disable some idle devices to vacate the channel or try upgrading your router.

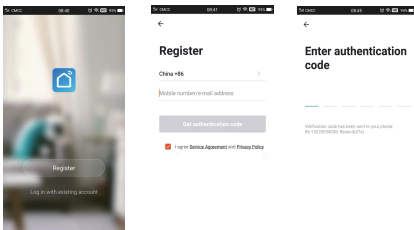
-4-

How to set up:

- Use your smartphone to scan below QR code, or search "Smart Life" app in Google Play Store or APP Store to download and install.

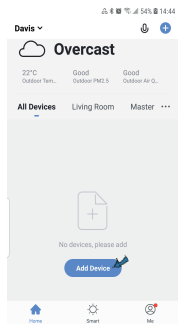


- Create an account with your mobile number and authentication code.



-5-

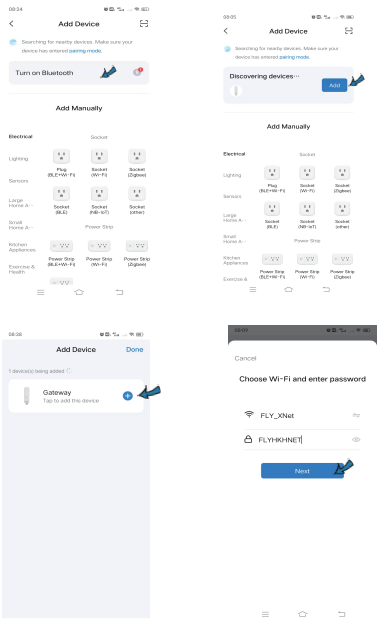
- Connect your mobile to your Wi-Fi router, insert the USB port of gateway to USB power socket, click "+" at the upper right corner of homepage or click "Add Device".



-6-

4. 1) Bluetooth Mode

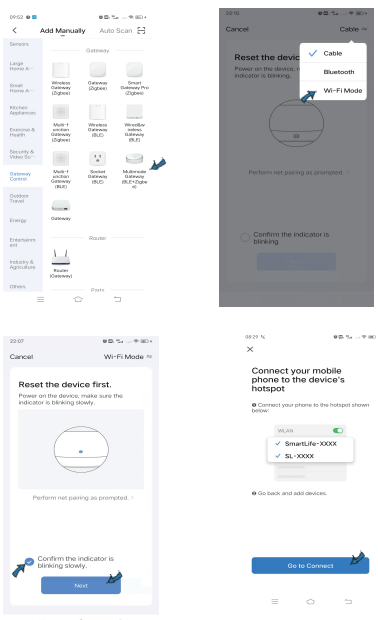
The App will pop up a window advise you to turn on the bluetooth in the App, then click "Add", it will discover the device and add automatically.



-7-

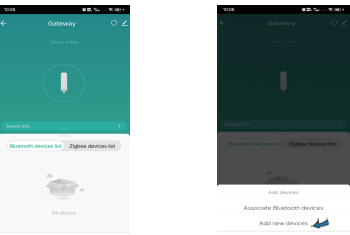
2) Wi-Fi Mode

Select "Multimode Gateway (Zigbee +BLE)" from "Gateway Control", then select "Wi-Fi Mode", enter wifi name and password, make sure the red indicator is blinking slowly, if not, hold the reset button until it is blinking slowly. connect your mobile to device's hotspot: "SmartLife-XXXX", then click to return to App interface, it will connect .



-9-

- Click "Add devices", select "Add new devices", it will discover nearby devices, make sure the device is in pairing mode. After device is added successfully, you can control the device.



-10-