

# Quick Start Guide



## MELSEC iQ-R Ethernet to X2 series

SUEN00406 - Quick start Ethernet communication



## 1 Function and area of use

This document explains how to set up an iQ-R over ethernet to communicate with X2/BoX2 over Ethernet using MC Protocol.

## 2 About this Startup document

This Startup document should not be considered as a complete manual. It is an aid to be able to Startup a normal application quickly and easily.

### Copyright © Beijer Electronics, 2021

*This documentation (below referred to as 'the material') is the property of Beijer Electronics. The holder or user has a non-exclusive right to use the material.*

*The holder is not allowed to distribute the material to anyone outside his/her organization except in cases where the material is part of a system that is supplied by the holder to his/her customer.*

*The material may only be used with products or software supplied by Beijer Electronics.*

*Beijer Electronics assumes no responsibility for any defects in the material, or for any consequences that might arise from the use of the material.*

*It is the responsibility of the holder to ensure that any systems, for whatever applications, which is based on or includes the material (whether in its entirety or in parts), meets the expected properties or functional requirements.*

*Beijer Electronics has no obligation to supply the holder with updated versions.*

Use the following hardware, software, drivers and utilities in order to obtain a stable application:

### In this document we have used following software and hardware

- iX Developer 2.40 SP4 or later
- X2/BoX2 series
- GX Works 3
- iQ-R CPU

### For further information refer to

- [Beijer Electronics knowledge database, HelpOnline](#)

This document and other Startup documents can be obtained from our homepage.

Please use the address [support.europe@beijerelectronics.com](mailto:support.europe@beijerelectronics.com) for feedback about our Quick Start documents.

### 3 Table of Contents

1

Function and area of use.....

2

2

About this Startup document.....

2

3

Table of Contents.....

3

4

Setting in iQ-R Ethernet communication.....

4

5

Setting in X2/BoX2 Ethernet communication MC protocol.....

5

5.1

Create a new project in iX Developer .....

5

5.2

Driver settings (MC Protocol) .....

7

6

About Beijer Electronics .....

8

6.1

Contact us .....

8

## 4 Setting in GX Works3, iQ-R Ethernet communication

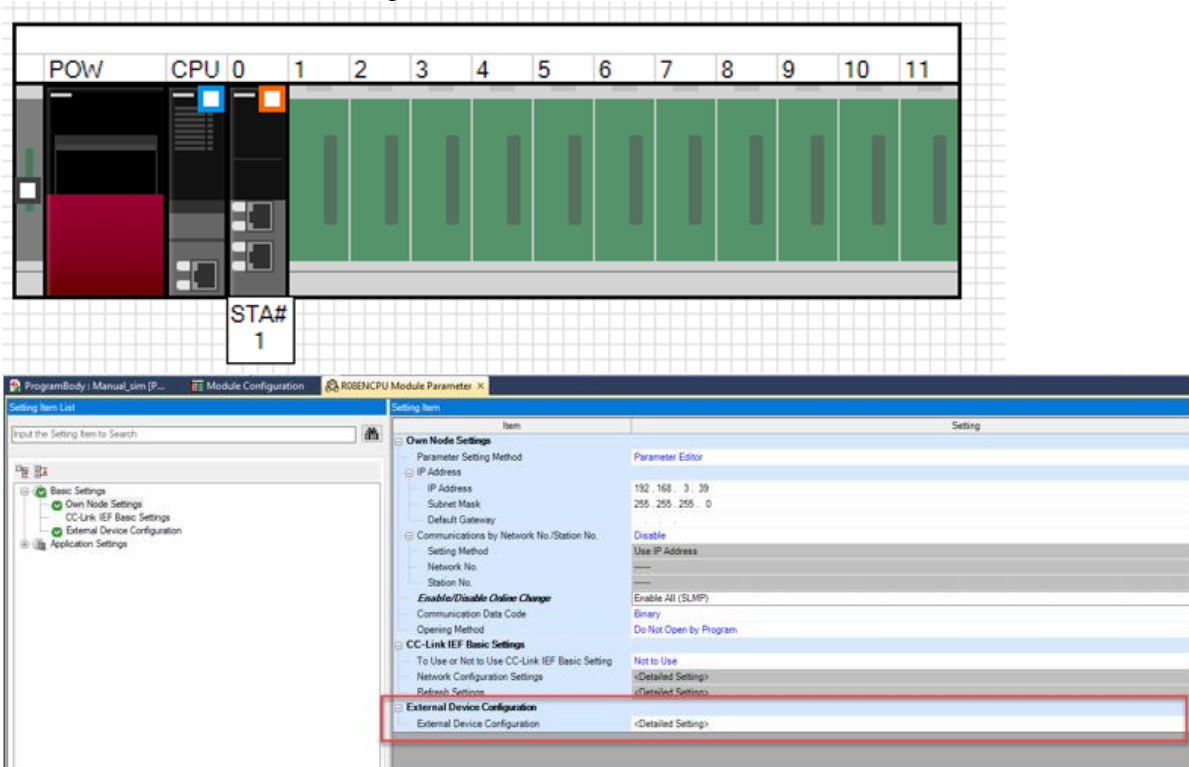
The following chapter describes how to setup the Ethernet communication.

All iQ-R (for example R04) has a built in ethernet port, Auto UDP 5005 is to be used.

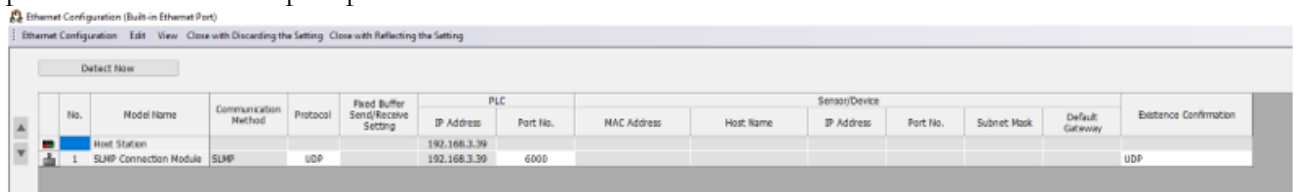
Som iQ-R models are also available in a R0xEN model with 3 ethernet ports.

Port 2 and 3 are using the same Auto ports as older ethernet modules in the Q-series (QJ71E71-100, Auto UDP ports: 5000 and 5001, Auto TCP port: 5002).

Recomemmded is to use UDP ports.



To enable ports (not using Auto UDP/TCP port) a SLMP module needs to be used, enter port number and transport protocol.



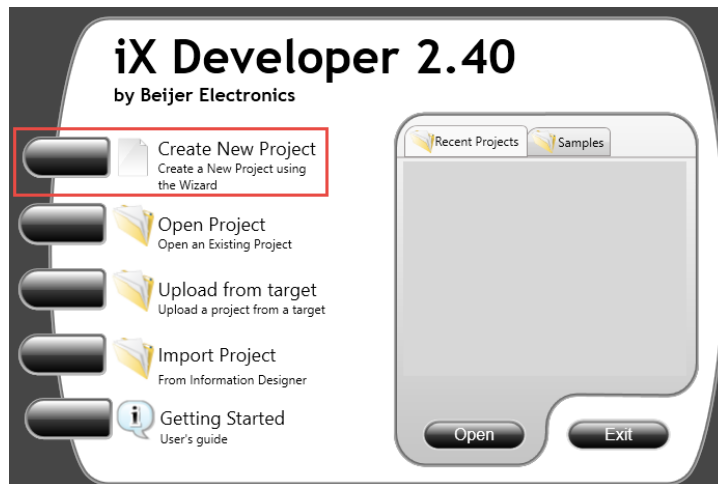
Port number 6000 (decimal) is used in this example, same port must be entered in iX Developer.

## 5 Setting in X2/BoX2 Ethernet communication MC protocol

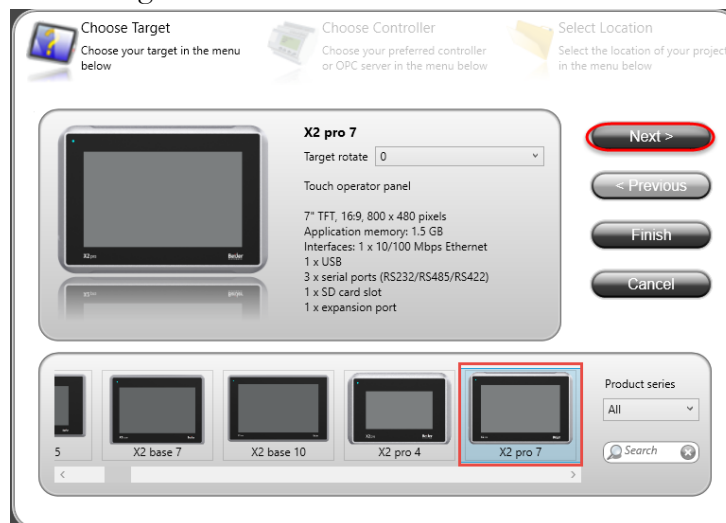
The following chapter describes how to setup the Ethernet communication in iX Developer using the MC Protocol driver.

### 5.1 Create a new project in iX Developer

Start iX Developer, select “Create New Project”:



Select target:



Select MC Protocol:

Choose Target  
Choose your target in the menu below

Choose Controller  
Choose your preferred controller or OPC server in the menu below

Select Location  
Select the location of your project in the menu below

Controllers

Select brand

MELSEC

MELSERVO

MODICON

NMEA 0183

Select protocol

FX ENET

FX Series Serial

FX3U/GE-ENET

MC Protocol

QnA/Qnn/Lnn Serial

QnA/Qnn/Lnn-Series (C24)

OPC UA Server

URL:

Next >

< Previous

Finish

Cancel

Type path and project name:

Choose Target  
Choose your target in the menu below

Choose Controller  
Choose your preferred controller or OPC server in the menu below

Select Location  
Select the location of your project in the menu below

Name:

X2pro7\_iQ\_R

Location:

D:\Projects

Browse...

Next >

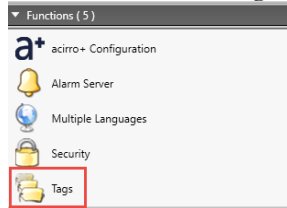
< Previous

Finish

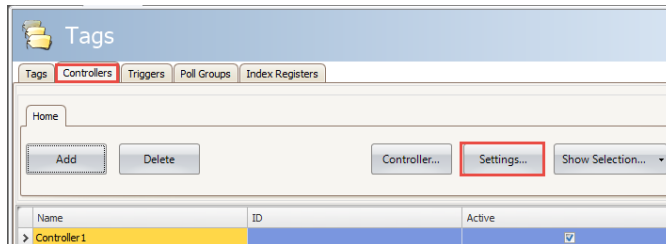
Cancel

## 5.2 Driver settings (MC Protocol)

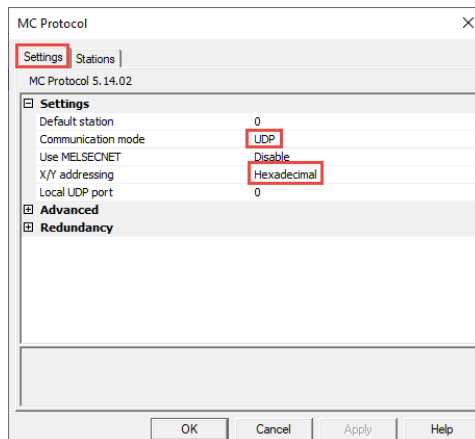
Double click on “Tags”:



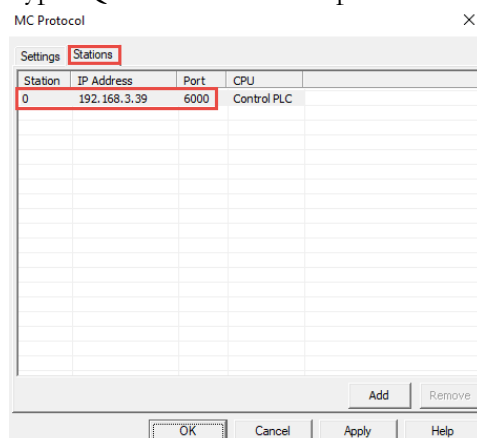
Select “Controllers” - “Settings...”:



Select “TCP/IP” and “Hexadecimal”:



Type iQ-R IP address and port number configured in GX Works3:



If Auto ports is used in GX Works3 use  
UDP port: 5000 / 5001 or Auto TCP port: 5002

**Tip!**

Click on “Help” for driver description

Press OK.

## 6 About Beijer Electronics

Beijer Electronics is a multinational, cross-industry innovator that connects people and technologies to optimize processes for business-critical applications. Our offer includes operator communication, automation solutions, digitalization, display solutions and support. As experts in user-friendly software, hardware

and services for the Industrial Internet of Things, we empower you to meet your challenges through leading-edge solutions.

Beijer Electronics is a Beijer Group company. Beijer Group has a sale over 1.6 billion SEK in 2019 and is listed on the NASDAQ OMX Nordic Stockholm Small Cap list under the ticker BELE. [www.beijergroup.com](http://www.beijergroup.com)

### China

Shanghai

### NORWAY

Drammen

### TAIWAN

Taipei

### DENMARK

Roskilde

### SOUTH KOREA

Seoul

### TURKEY

Istanbul

### FRANCE

Paris

### SWEDEN

Göteborg  
Malmö  
Stockholm

### UNITED KINGDOM

Nottingham

### GERMANY

Nürtingen

### USA

Salt Lake City

### 6.1 Contact us

[Global offices and distributors](#)

**!Optional details if one wants to add local contact information in the document!**

Local office	Telephone	E-mail
Sweden	+4640358600	info.se@beijerelectronics.com

#### Head Office

Beijer Electronics AB  
P.O. Box 426, Stora Varvsgatan 13a  
SE-201 24 Malmö, SWEDEN  
Telephone +46 40 35 86 00

#### Subsidiaries

[Click here for details](#)