



Sega Genesis Power LED Replacement

Written By: Anthony Porchia



INTRODUCTION

This repair guide will give a walk through on how to replace the power LED in a Sega Genesis.

TOOLS:

- [Phillips #1 Screwdriver](#) (1)
 - [5mm 3.6v LED](#) (1)
-

Step 1 — Outer Case



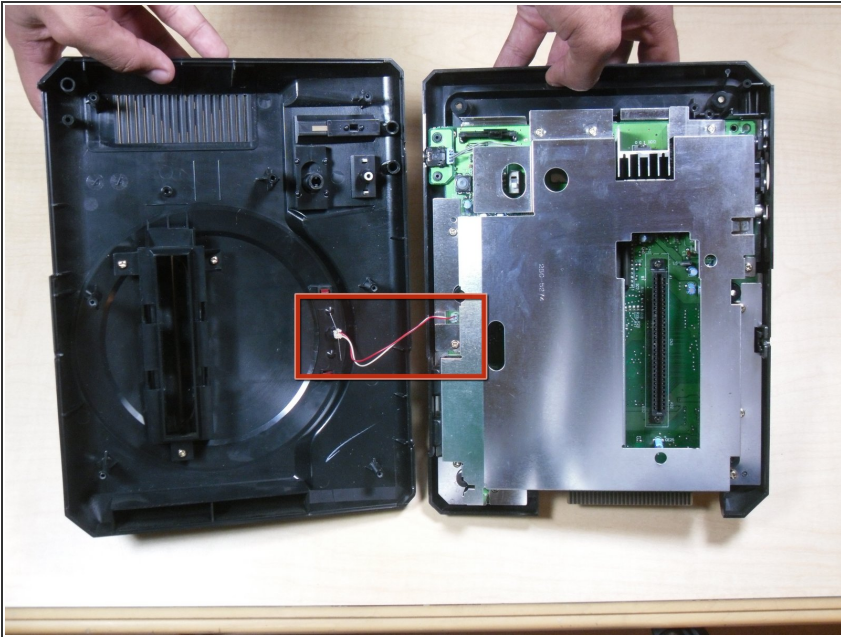
- Remove the six screws from the underside of the console with a Phillips #1 screwdriver.

Step 2



- Flip the Sega Genesis upright.

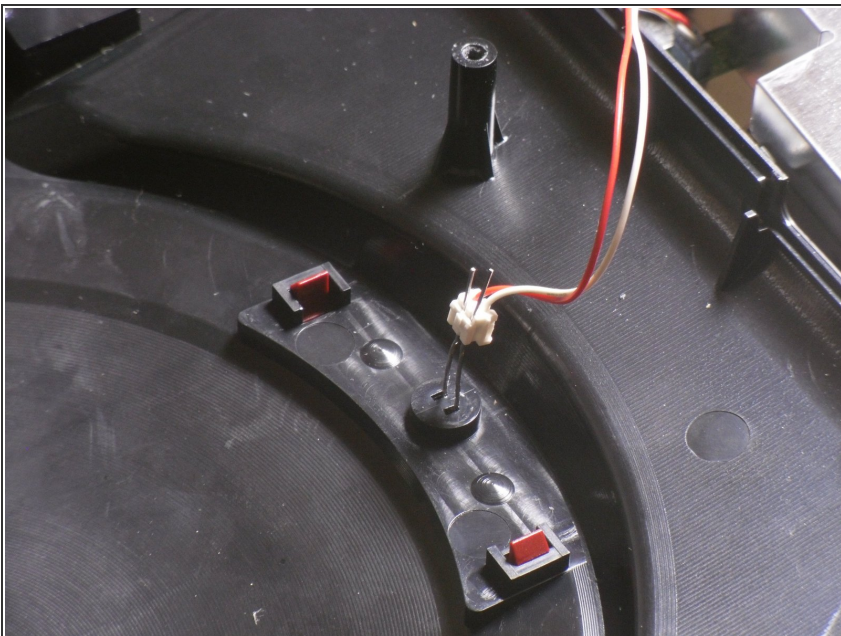
Step 3



- Gently lift the top casing.

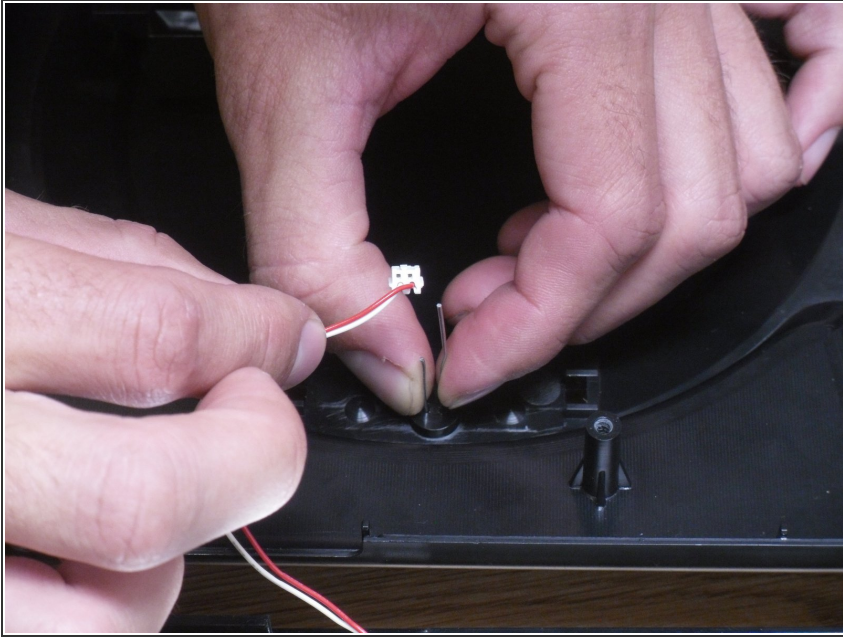
⚠ Note: the case will be connected to the main board by LED wires.

Step 4



- Bend out the LED leads into vertical positions.

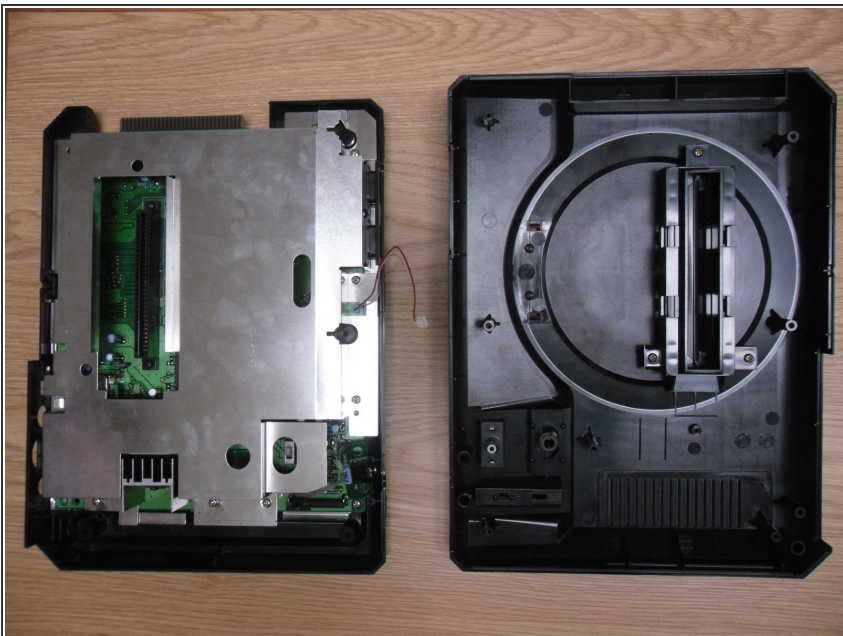
Step 5



- Slide the LED wire apparatus off the lead pins.

⚠ Note: observe which color wire corresponds with which length of pin.

Step 6



- Separate the main board from the outer case.

Step 7 — Power LED



- Remove plastic "Power / On" cover by pushing tabs together.

Step 8



- Pull "Power / On" cover away from the console cover.

Step 9



- From the outside of the top cover, remove LED.

Step 10



- Insert new LED ([Click here to buy LED.](#))

Step 11



- Re-insert "Power / On" cover until it clicks into place.

To reassemble your device, follow these instructions in reverse order.