

# SS-CEX1

## SERVICE MANUAL

Ver 1.1 2002.03



*US Model  
Canadian Model  
AEP Model  
UK Model  
E Model  
Australian Model  
Tourist Model*

This set is the speaker system in CMT-EX1.

### SPECIFICATIONS

Speaker system	2-way, bass-reflex type
Speaker units	
Woofer :	9 cm (3 <sup>5</sup> / <sub>8</sub> in) dia., glass-fiber cone type
Tweeter :	2 cm (3 <sup>13</sup> / <sub>16</sub> in) dia., balanced drive
impedance	4 ohms
Dimensions	130 x 216 x 183 mm (5 <sup>1</sup> / <sub>8</sub> x 8 <sup>5</sup> / <sub>8</sub> x 7 <sup>1</sup> / <sub>4</sub> in) (w / h / d incl. projecting parts and controls)
Mass	Approx 1.8 kg (3 lb 15oz.) net per speaker

**SPEAKER SYSTEM**

9-929-016-12  
2002C0200-1  
© 2002. 03

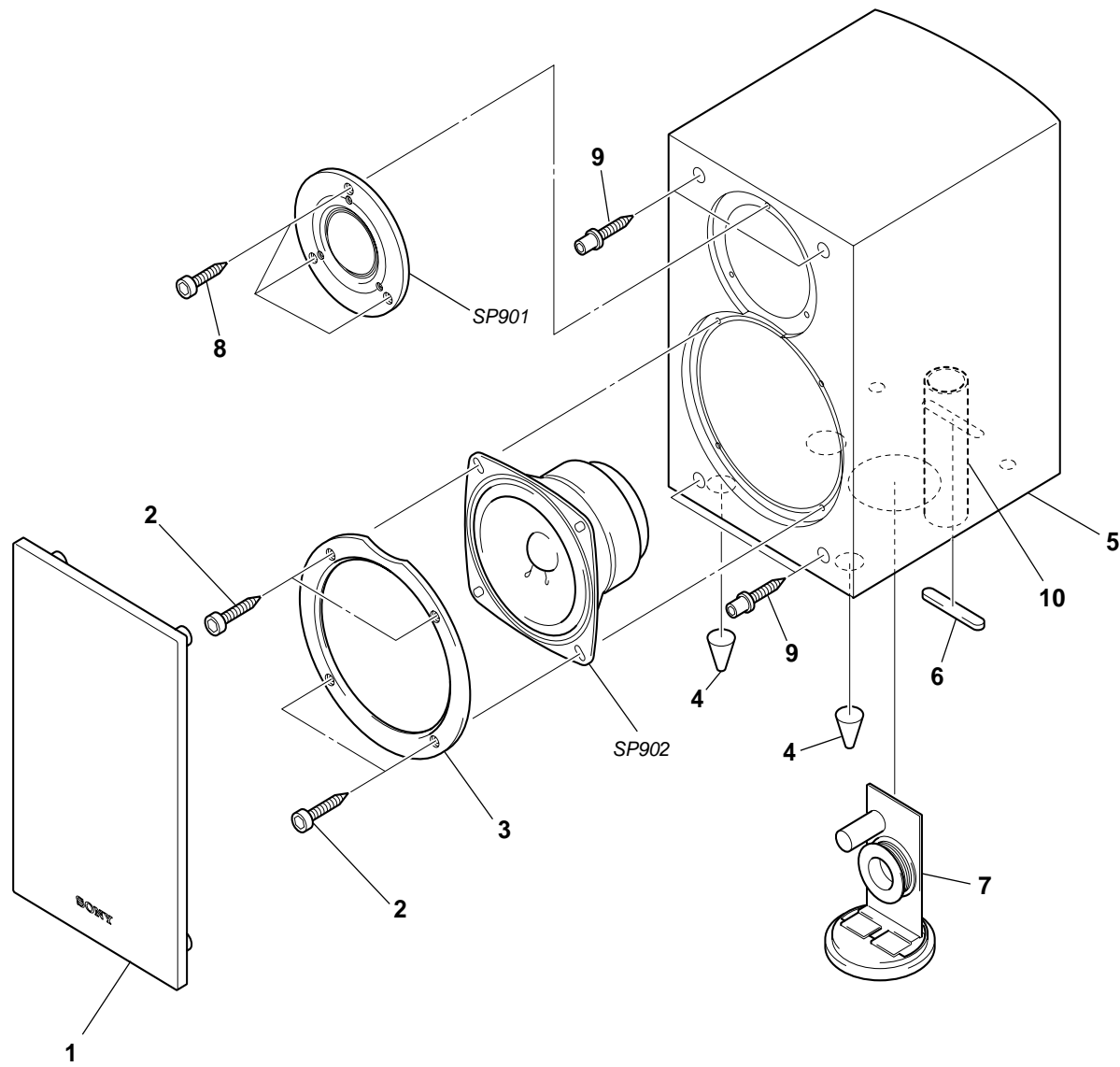
**Sony Corporation**  
Home Audio Company  
Published by Sony Engineering Corporation

**SONY®**

SS-CEX1  
Ver 1.1 2002.03

EXPLODED VIEW AND PARTS LIST

- NOTE:
- Items marked “\*” are not stocked since they are seldom required for routine service. Some delay should be anticipated when ordering these items.
  - Hardware (# mark) list and accessories and packing materials are given in the last of this parts list.



Ref. No.	Part No.	Description	Remark	Ref. No.	Part No.	Description	Remark
1				8			
2				9			
3				10			
4				SP901			
5				SP902			
6							
7							