

MIXING CONSOLE

Professional 4-Channel Audio Mixer with PC Recording
USB/Bluetooth/ Effects Processor

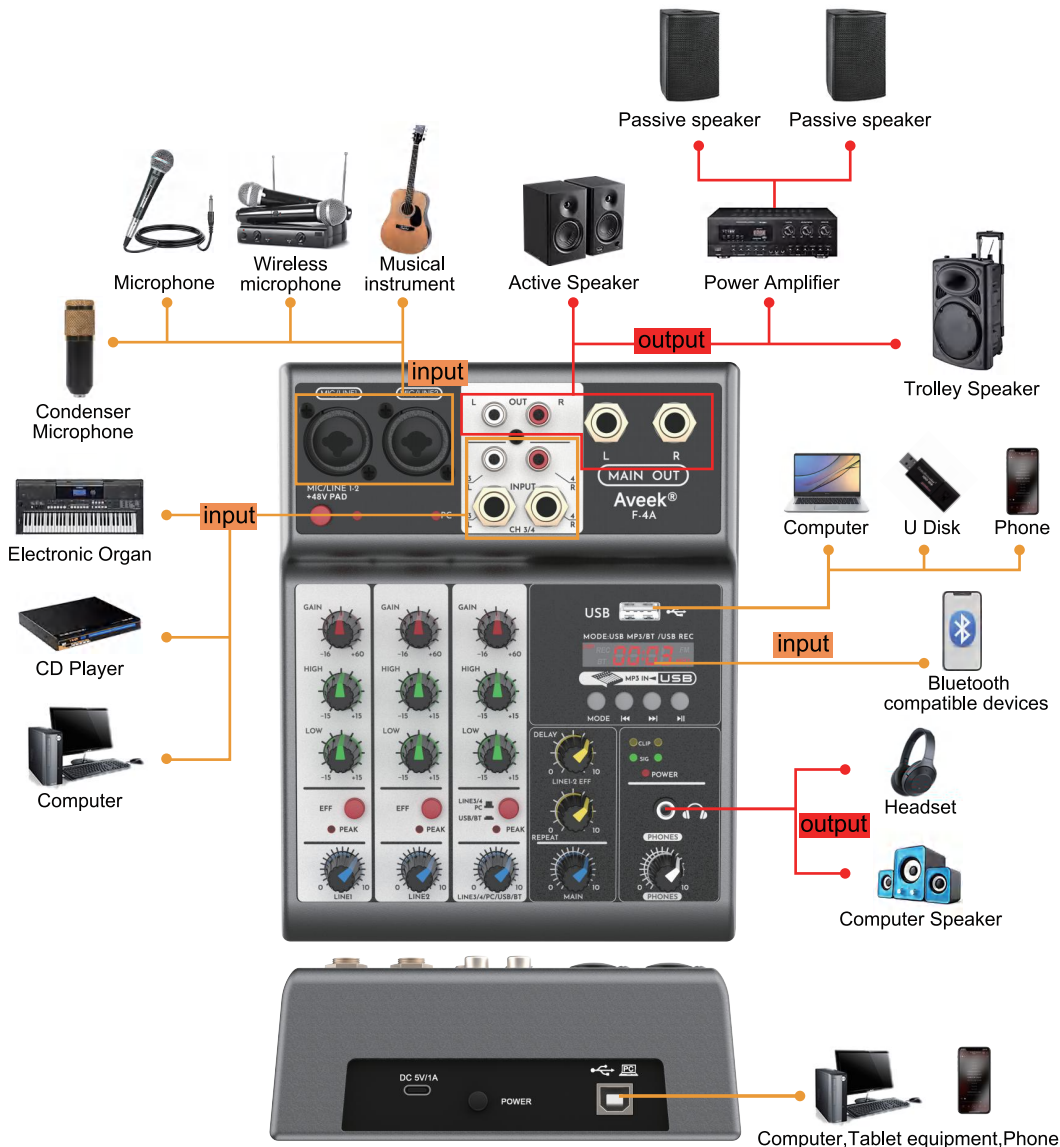
Owner's Manual



RoHS
Made in China



Compatible Devices and Connection Methods



INPUT&OUTPUT

MIC INPUT	XLR input jacks x 2	REC OUT	RCA L/R Line output x 1 pair
6.35MM INPUT	6.35mm L/R Line input jacks x 1 pair	MAIN OUT	6.35mm L/R output x 1 pair
RCA INPUT	RCA L/R Line input jacks x 1 pair	MONITOR OUT	3.5mm monitor output jack x 1
USB 2.0 INPUT	USB input x 1 for record and playback	Bluetooth INPUT	Bluetooth wireless input x 1
USB-B INPUT	USB-B input/output* 1 for record and playback		

1.Welcome

Thank you for purchasing the F-4A audio mixer.
Please read this manual carefully for proper use of your F-4A audio mixer, Should you need technical assistance please email our thechnical help at "all-after-sales@outlook.com".

2.Main Features

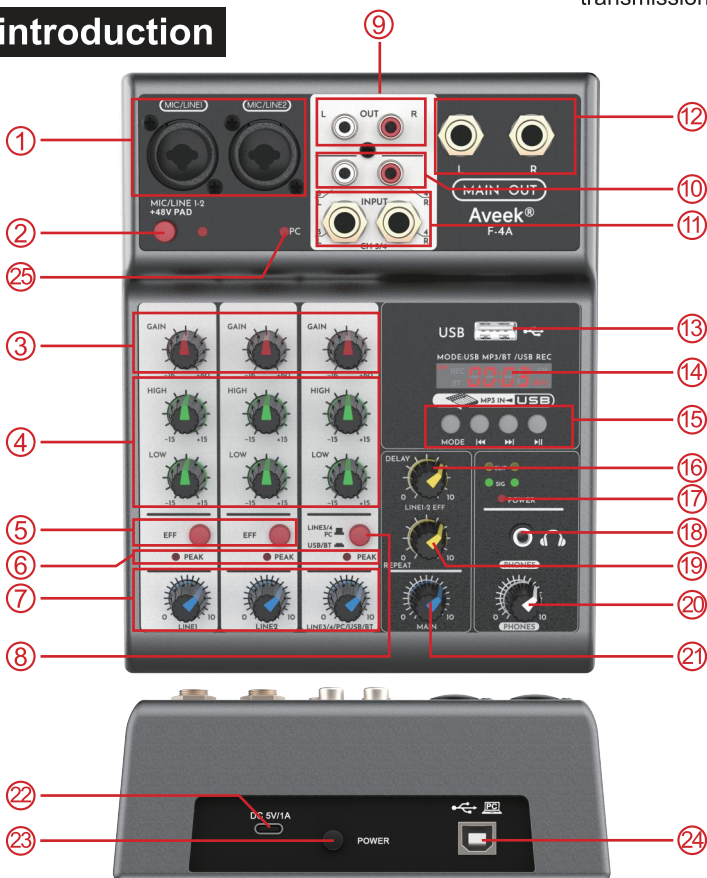
- 2 XLR Mic Linel Input + 1 pair RCA L/R Line Input and 1 pair 6.35mm L/R Line Input.
- USB-B interface can connect the PC for recroding ouput and playing audio.
- Bluetooth/USB playback
- Built-in 48V phantom power supply
- Gain and treble and bass adjustment, Delay or reverb effects adjustment.

3.Included Accessories



- ① Audio mixer*1 ② Micro-USB Power Cable *1 ③ AC power adaptor * 1 ④ USB-B Recording/Data transmission cable (78 inch)

4.Panel introduction



1 [MIC/LINE 1-2] 2 XLR mono input jacks

Used to connect microphones, musical instruments, or audio equipment (CD players, etc.) to this device. These jacks support both XLR and phone plugs.

2 [PAD +48V] Switch

When the switch is turned on, the LED lights up to indicate that the device has applied DC+48V phantom power to the MIC LINE 1-2 on mono input XLR port . When using a condenser microphone powered by phantom power, turn on this switch.

NOTE:

If you do not need phantom power supply, be sure to set this switch to off. When operating this switch, please observe the following important precautions in order to prevent noise and damage to the unit and external equipment.

- When the microphone or other equipment connected on the MIC LINE 1-2 does not support the phantom power supply function, make sure that the switch is kept off.
- When the switch is on, do not connect/disconnect the cables on the MIC LINE 1-2.
- Before operating this switch, set the [LEVEL] knobs of the MIC LINE 1-2 to minimum.

3 [GAIN] knob

Input channel volume buttons, Adjust these controllers to make the corresponding[PEAK] LED flash briefly when singing and playing at the maximum volume.

- The volume MIC LINE 1-2 can be individually adjusted.
- The volume of LINE 3/4/PC and USB/Bluetooth module are share a single GAIN knob control.

4 Equalizer (EQ) knob

Use the [HIGH] (high band) and [LOW] (low band) knobs to adjust the sound quality.If you do not need to adjust the sound quality, you can set the knob to the "12 o'clock direction" position.

- The EQ of MIC LINE 1-2 can be individually adjusted on EQ key.
- The EQ of LINE 3/4/PC and USB/Bluetooth module are share a single EQ knob control.

5 [EFF] Effect switch

The EFF control adjusts the effect volume of the only for MIC LINE1-2. LINE 3-4/PC/Bluetooth/USB modules have no reverberation effect.

6 [PEAK] LED

It will light up when the volume of the input signal or the volume after the equalizer is too high (when it reaches 3dB below the clipping distortion). If it lights up frequently, turn the [GAIN] knob to the left to decrease the volume.

7 [LEVEL] knob

Used to adjust the volume balance between each channel. Usually this switch is set to the "3 o'clock direction" position.

- The volume MIC LINE 1-2 can be individually adjusted GAIN knob control.
- The volume of LINE 3/4/PC and USB/Bluetooth module are share a single LEVEL knob control

8 [LINE 3/4/PC USB/Bluetooth function] switch

This switch button is to switch between LINE 3/4/PC or USB/Bluetoothmodule When you use LINE 3/4/PC, you don't have to press this button. When you use the USB/ Bluetooth module, this button must be pressed.

NOTE: Bluetooth and USB functions are only available as one of the two options and cannot be uedsimultaneously.

9 RCA L/R Line Output jacks

Used for output connections, devices that support RCA jacks.

10 RCAL/R Line Input jacks

For input connections, devices that support lotus line jacks.For example, CD player, mobile, compuer, electronic organ ect.

11 6.35mm L/R Line Input jacks

It is used for input connection and supports 6.35mm-line jack devices. For example, CD player, mobile, computer,electronic organ ect.

12 6.35mm L/R Line Output jacks

It is used for output connection and supports 6.35 line socket equipment. For example, active speaker, power amplifier ect.

13 USB input

Used for USB port device input. Such PC, USB Stick, MP3 devices ect, it can be used for music playback and recording to USB stick output.

14 Display

Used to display USB mode or Bluetooth mode.

15 USB Player /Bluetooth player / USB recording controller

The first button on the left: switch USB MP3 Player or Bluetooth MP3 Player or USB Stick Recording mode; The second button on the left: previous song;The first button on the right button: playback pause; The second button on the right: next song.

16 [DELAY] Delay effect knob

Adjust the intensity of the delay effect processing for the MIC LINE 1-2 signal.

17 Power switch LED The mixer's power switch indicator

18 [PHONES] output jack Used to connect headphones.

19 [REPEAT] Reverb effect knob

reverberation effect processing for the MIC LINE 1-2 signal.

20 [PHONES] knob

You can adjust the volume of the sound output from the [PHONES] jack.

21 [MAIN] knob All signals volume control knob.

22 [DC5V / Micro Power port]

Connect the included power cord and AC adapter to power the mixer, or connect to a computer to record and play. There are three ways to supply power.

1. Power up with the supplied AC adapter and power cord connection.

2. It can be connected with the supplied power cord with the power bank.

3: You can connect to your computer with the included power cord.

23 Power switch This key is the switch that controls the mixer.

24 USB-B port for PC/Phone Connection

This USB-B port is designed to connect to a computer/mobile phone for lossless data transfer/recording/playback, and at the same time to output recordings made on the mixer to a computer/mobile phone.

(Note that if you connect a mobile phone, you need an OGT header to transfer data to the mobile phone)

25 PC LED

This indicator lights up when the USB-B port is connected to a computer or mobile phone.

5.General Specifications

MIC LINE XLR	Electronic balance, discrete input configuration	
	Frequency response	10 Hz ~ 200 kHz
	Gain range	+14 dB ~ +60 dB
	SNR	120 dB E.I.N.
RCA Input	Electronic balance	
	Frequency response	10 Hz ~ 130 kHz
	Gain range	-6 dB ~ +38 dB
	SNR	95 dB E.I.N.
6.35mm Input	Frequency response	10 Hz ~ 70 kHz
	Gain range	line: -8~+15 dB/microphone: +13~+60 dB
	SNR	line: 90 dB/microphone: 104 dB E.I.N.
Equalization	LOW	50 Hz, + / - 15dB
	HIGH	10 kHz, + / - 15dB
OUTPUT	Main mix	+28 dBu balance/ + 22 dBu unbalanced
	Main output	+22 dBu unbalanced
	AUX sending	+22 dBu unbalanced
	EFF sending	+22 dBu unbalanced
	Tape output	+15 dBu / 150
physical	America/Canada	120 V~, 60 Hz,
	UK/Australia	240 V~, 50 Hz,
	Europe	230 V~, 50 Hz,
	Japan	100 V~, 50-60 Hz,
	China	200 V~, 50-60 Hz,

6. How to Use the Audio Mixer?

STEP1:

1.1: Connect the micro-usb power cable to mixer, then connect the Supplied AC adapter.

1.2: Adjust all level control knobs to zero. Includes [Gain] knob (red), [Level] knob (blue) and [Main] knob (white); Then set the equalizer knob (green) to the center "12 o'clock"



1.3: Turn on the power switch button.

1.4: Connect the output device (active speakers or power amplifier + passive speakers) to the output device jack of the mixer.



1.5: Connect the input devices you need in the following order:

🎤 (microphone), 🎸 (instrument), 📱 (audio device), 💻 (Computer)
🔌 (U Stick or bluetooth) ➡️ [U] (switch on unit) ➡️ 🗣️ (speakers)

NOTICE Follow this order to avoid any loud, unexpected noise from the speakers. Reverse the order when turning the power off.

STEP2:

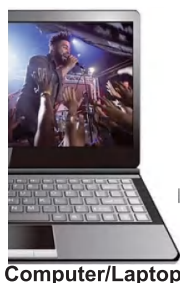
2.1: If you connect a device with high output level, such as a CD player or an electric keyboard to connect the channels 1-2, Press the [PAD] switch of the corresponding channel



2.2: Set the [LEVEL] knob as required to adjust the volume balance between the corresponding channels.

NOTICE There are three functions to adjust the volume: [PAD], [GAIN] and [LEVEL]. Once the [PAD] switch and [GAIN] knob have been set, do not adjust these controls as much as possible. Generally, the volume is adjusted with the [LEVEL] knob.

7. Operating Steps for Computer Recording



NOTE: When using recording with a PC, Pls check that the button is not pressed.

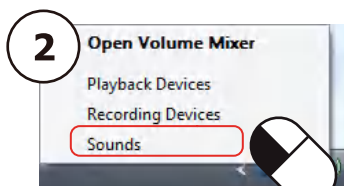
1. First connect the pc or laptop to the mixer using a cable to power it on and then directly open the recording software to record(no need to install a driver)
2. Before connecting to the computer to record,you need to set the computer as follows:

Windows system settings

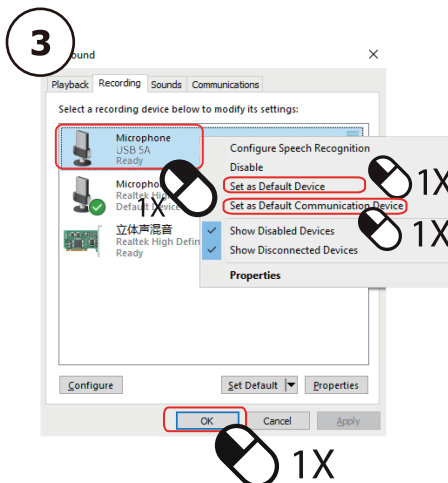
1. Open the Start menu, and then click Control Panel.
2. Open the sound preferences from the control panel folder.
3. Click "Record" and set the microphone to the default value to start recording.



1X



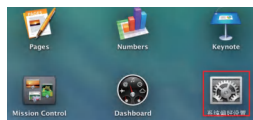
1X



1X

Apple system settings

1. Open the "System Preferences" application.
2. Find "Sound" and click to open it.
3. Click to open the "Output" interface to select the microphone and start recording.

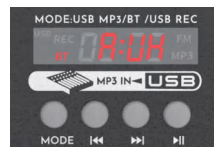
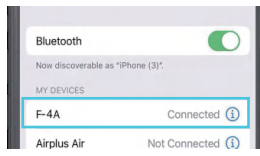
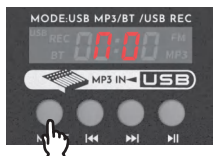


8. How to record via USB jack



1. Plug in usb stick, flash drive.
2. Press MODE button until “ USB REC”shown on the LCD and you will hear the voice prompt “ Recording Mode” , at this time, start recording automatically to USB.
3. Press the ►|| button to start or pause recording.
4. Press the MODE button to finish recording and save the file in the MP3 format&Play recording file.

9.Operating Steps for Bluetooth Playback



1. Press MODE button until “BT” shown on the LCD and you will hear the voice prompt “ The bluetooth device is ready to pair” .If Bluetooth is not connected, the word “BT” will keep flashing
2. Open Bluetooth mode on the phone, click “F-4A” to connect successfully,and you will hear the voice prompt "Bluetooth connect successful, and then play music.
3. Press the ►|| button to start or pause music, Press the ◀◀ and ▶▶ switch songs.



NOTE: When using Bluetooth and USB functions, Pls press this key ()

NOTE: Bluetooth and USB functions are only available as one of the two options and cannot be used simultaneously.

10.Operating Steps for USB Play Music



1. Plug in usb stick,flash drive,MP3
2. Press MODE button until“MP3”shown on the LCD and you will hear the voice prompt“Music Play Mode”. Then music automatically plays
3. Press the ►|| button to start or pause music, Press the ◀◀ and ▶▶ switch songs.



NOTE: When using Bluetooth and USB functions, Pls press this key ()

NOTE: Bluetooth and USB functions are only available as one of the two options and cannot be used simultaneously.