



SERVICE PARTS LIST

BULLETIN NO.
54-26-2885

SPECIFY CATALOG NO. AND SERIAL NO. WHEN ORDERING PARTS		REVISED BULLETIN	DATE
M18™ Compact Brushless 1/4" Hex Impact Driver (3 Speed)			June 2023
CATALOG NO.	3651-20	SERIAL NO.	N61A
		WIRING INSTRUCTION See Pages 2 & 3	

EXAMPLE:
Component Parts (Small #)
Are Included When Ordering
The Assembly (Large #).

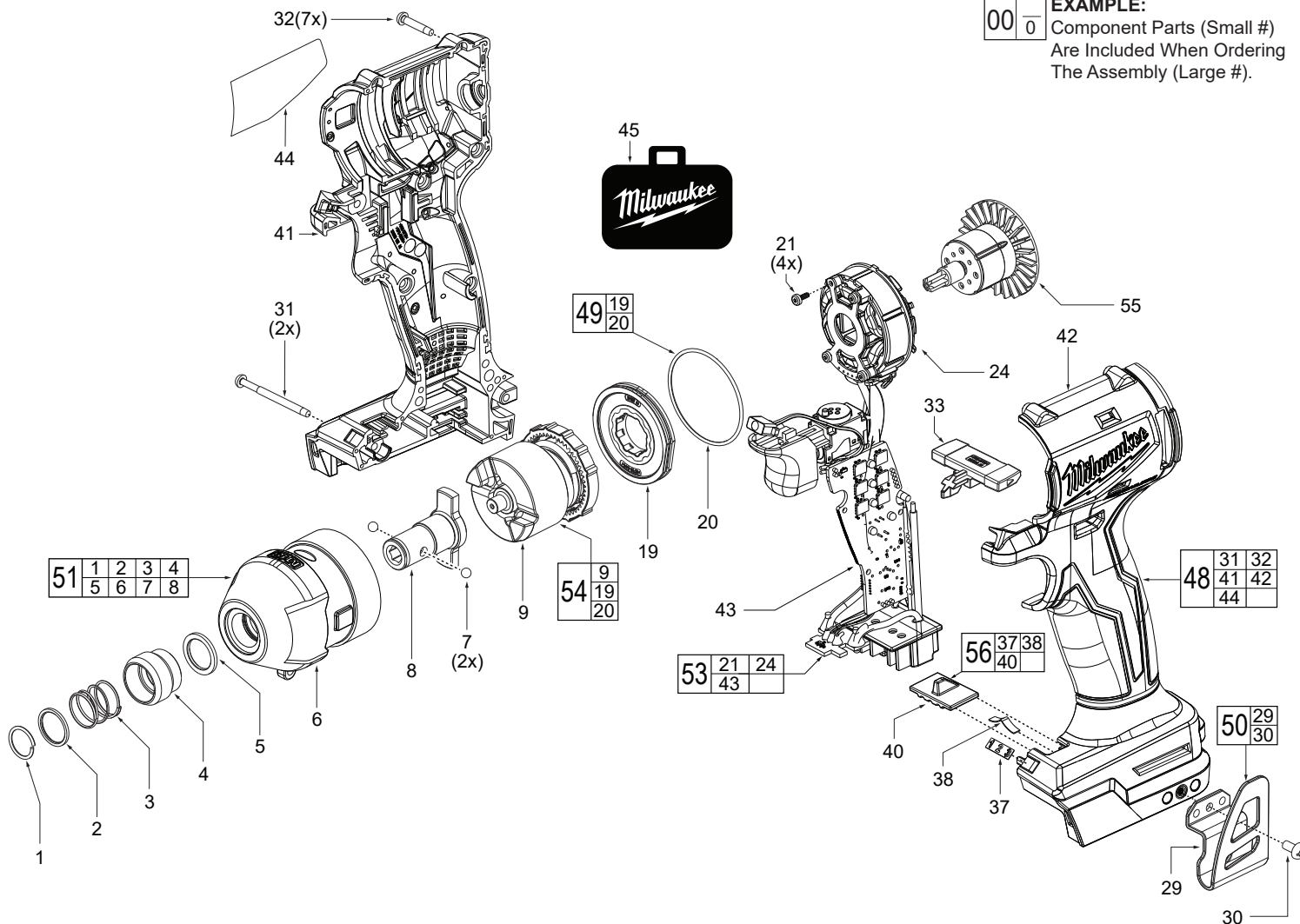


FIG.	PART NO.	DESCRIPTION OF PART	NO. REQ.
1	05-92-1010	Retaining Ring	(1)
2	45-88-2026	Washer	(1)
3	40-50-0056	Spring	(1)
4	42-76-0019	Sleeve	(1)
5	45-88-1547	Washer	(1)
6	-----	Front Gear Case	(1)
7	-----	Steel Ball	(2)
8	-----	Anvil	(1)
9	-----	Gearbox Mechanism	(1)
19	-----	Gearcase Endcap	(1)
20	34-40-0304	O-Ring	(1)
21	05-88-0106	M2 x .89 PT Screw	(4)
24	-----	Stator	(1)
29	-----	Belt Clip	(1)
30	06-82-2500	6-32 x 5/16 Slit. Pan Hd. T-15 Mach. Sc.	(1)
31	06-82-2367	M3 x 38mm Pan Hd. ST T-10 Screw	(2)
32	06-82-6351	M3 x 16mm Pan Hd. ST T-10 Screw	(7)
33	45-24-9030	Shuttle	(1)
37	-----	Speed Selector Label	(1)
38	-----	Spring Plate	(1)
40	-----	Speed Selector Switch w/ Magnet Assembly	(1)
41	-----	Handle Cover	(1)
42	-----	Handle Support	(1)
43	-----	Main PCBA	(1)
44	12-20-9890	Service Nameplate	(1)
45	42-55-2407	Contractor Bag	(1)
48	14-34-6610	Handle Housing Service Kit	(1)
49	14-30-6295	End Cap Service Kit	(1)
50	42-70-0950	Belt Clip Kit	(1)

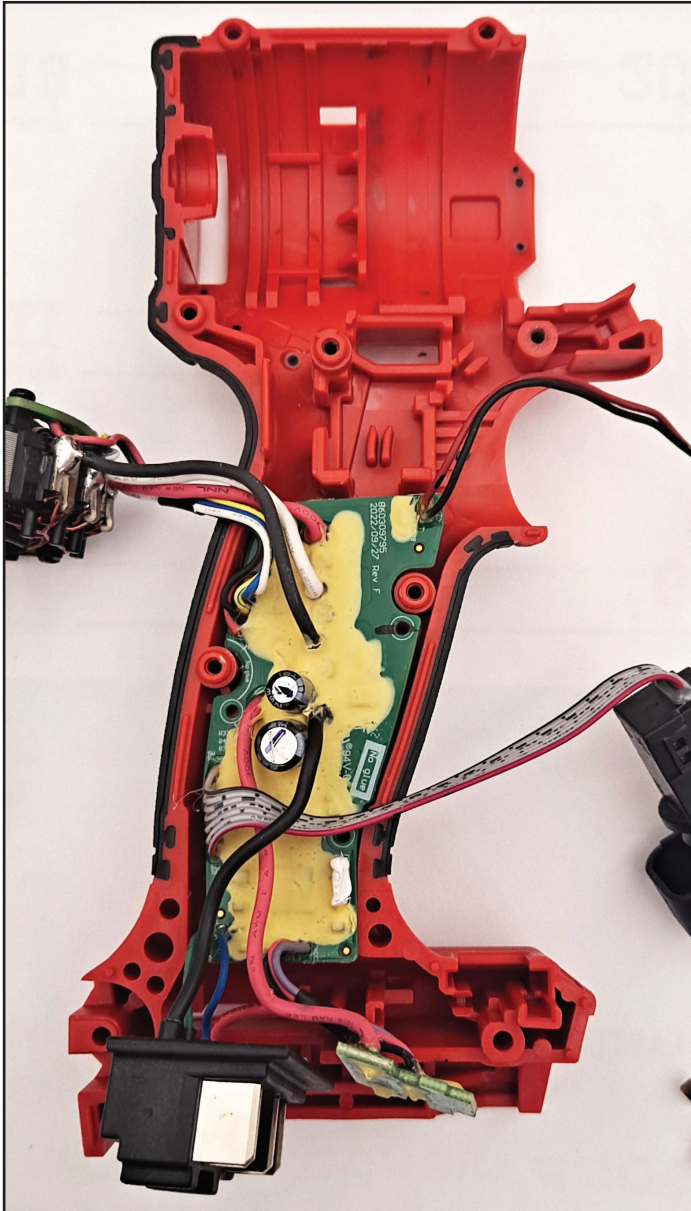
FIG.	PART NO.	DESCRIPTION OF PART	NO. REQ.
51	14-29-9005	Gearcase/Anvil Service Kit	(1)
53	14-20-9330	PCBA/Motor Stator Service Assembly	(1)
54	14-34-6615	Gear Box Impacting Service Assembly	(1)
55	14-46-9865	Rotor Service Assembly	(1)
56	14-46-9870	Speed Selector Switch Service Kit	(1)

FIG. LUBRICATION

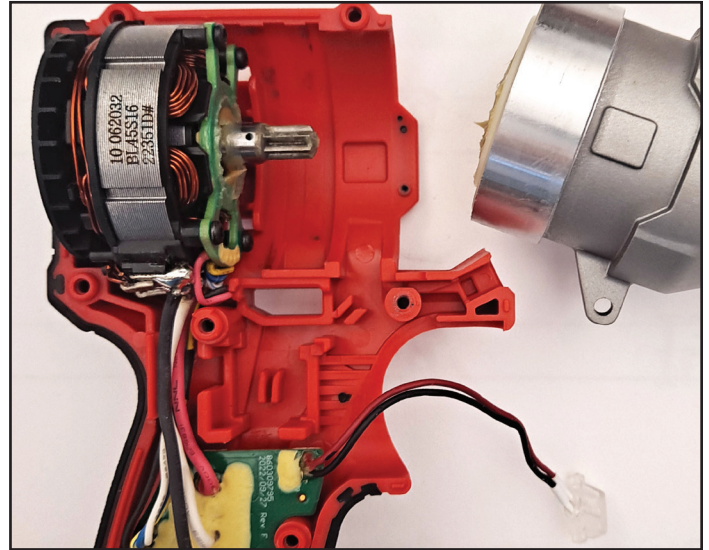
Use Type 'J' Grease, No. 49-08-4220 (1 lb. can)

Service grease may not be compatible with grease used during manufacturing. 90-95% of the old grease must be removed prior to any new grease being added.

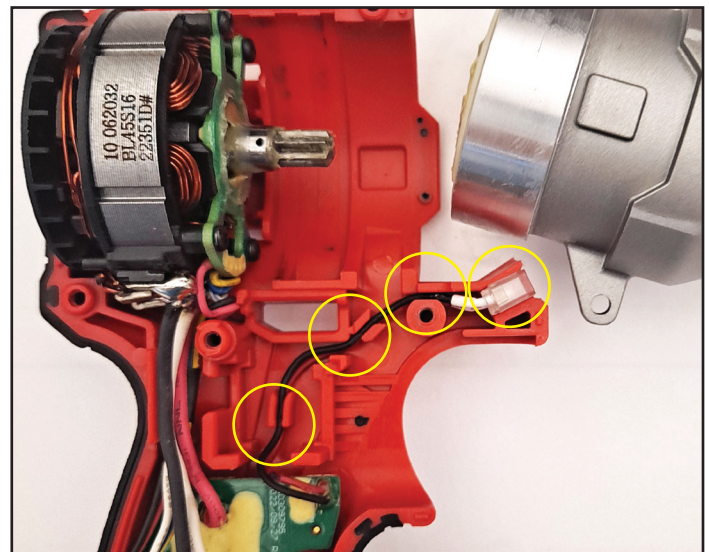
- 8 Lightly coat front washer surface of anvil with grease, place a dab in the ball cavities of anvil.
- 51 Coat inside of bushing inside front gearcase with grease.
- 54 **NOTE:** Do not wash impact assembly. Use a clean, dry cloth to wipe away any excess grease or contamination.
- 54 Lightly coat the I.D. of the ring gear and the center of the planet gears of impacting assembly with grease.
- 55 Coat pinion of rotor assembly with grease.



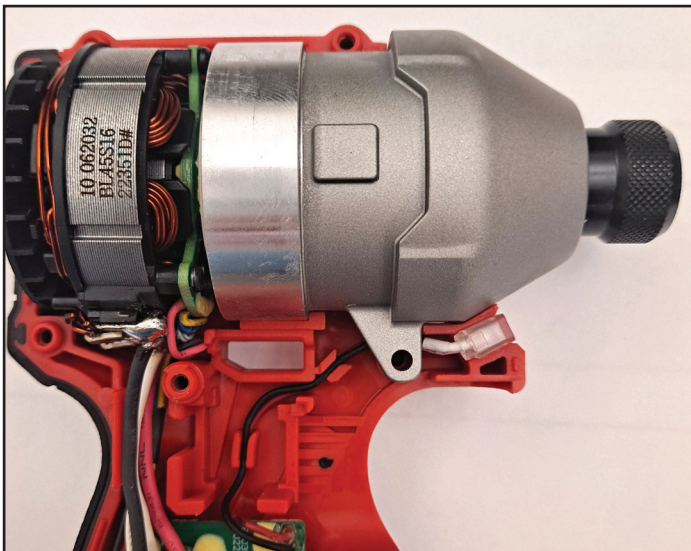
STEP 1: Place PCBA firmly and squarely in cavities of left housing half.



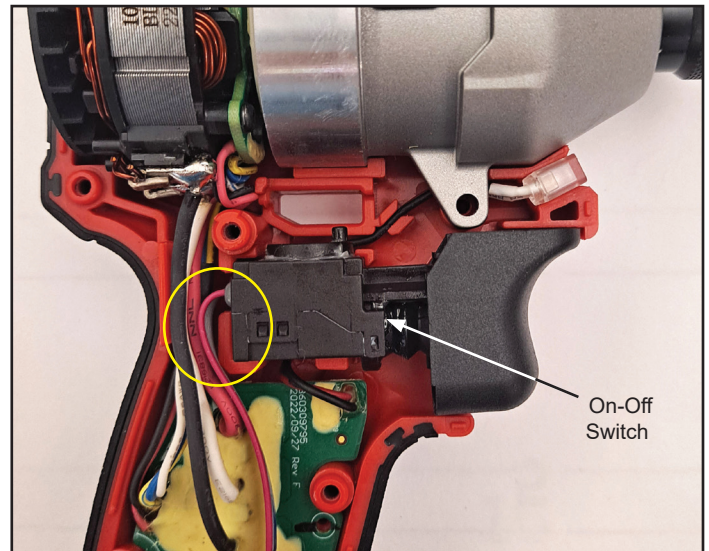
STEP 2: Carefully insert rotor into stator. Place rotor/stator in handle half at 15 degrees so rear rotor bearings fit into pocket and stator fits into grooves/ribs of left housing half. Arrange wires as shown above.



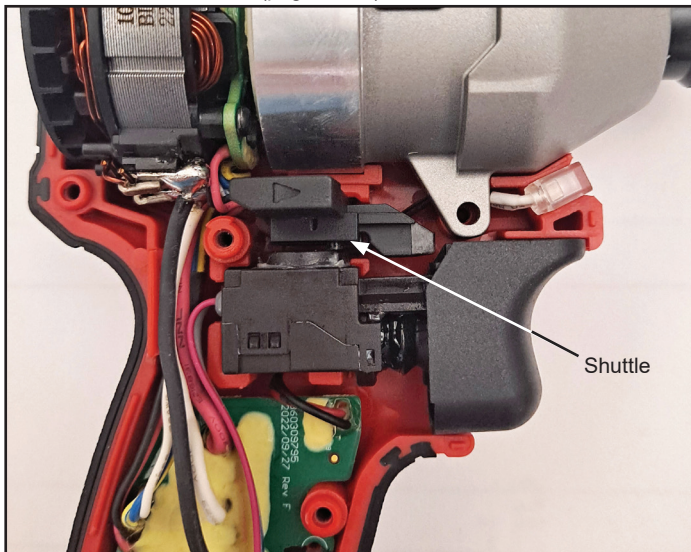
STEP 3: Install LED lens into housing half recess. Route light wire in traps as shown in image above, with black wire above white wire.



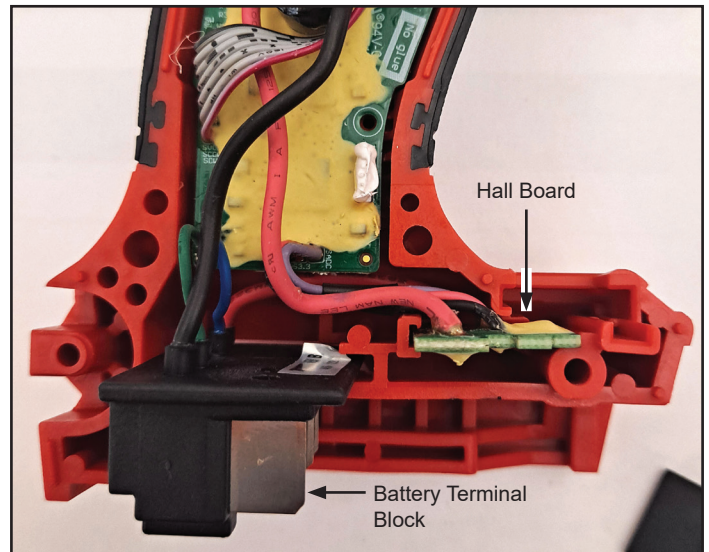
STEP 4: Assemble gear box/impact assembly onto rotor pinion. Be sure gear box, rotor and stator are firmly and squarely seated in left housing half and that the rotor fan has movement.



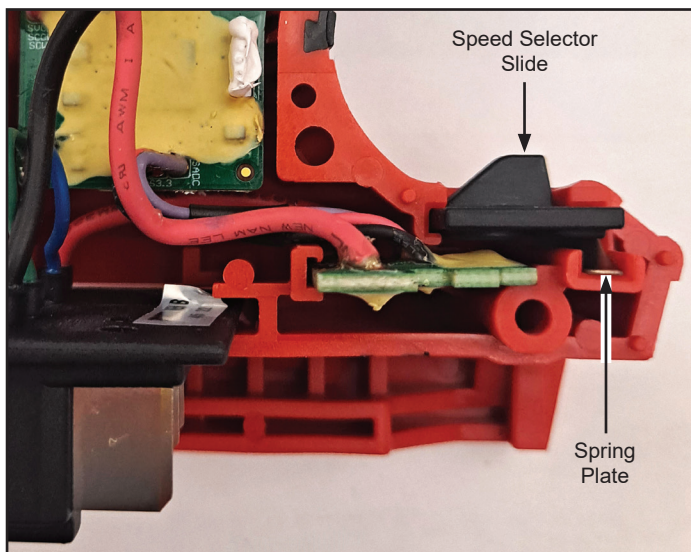
STEP 5: Place on-off switch firmly and squarely in cavity of left housing half. Be sure ribbon wire is tucked in channel, and all previously placed wires are still captured in properly in wire traps and channels.



STEP 6: Install shuttle onto on-off switch being sure that top switch tab is captured in the bottom cavity of shuttle. Check for proper shuttle and switch functionality.



STEP 7: Place battery terminal block and hall sensor firmly and squarely into cavities of left housing half. Be sure to capture hall sensor wires in trap as shown.



STEP 8: Install spring plate and speed selector slide into left housing half.



STEP 9: Check that all elements of electronics assembly are seated properly and that all wires are pressed completely down in wire traps and channels.

Carefully install right housing half-cover onto left housing half-support. Watch for pinched wires. Secure with nine housing half screws.

Check functionality of shuttle, on-off switch and speed selector slide before installing battery.