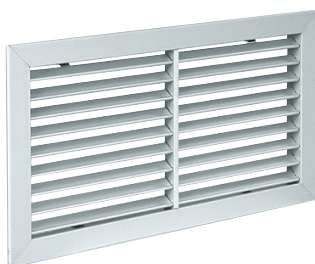


Heat and smoke exhaust flap grille

11050621
AC 121 F3 200x100

The AC 121 aluminium wall grille enables air extraction on all ventilation and air-conditioning systems.

**PRODUCT BENEFITS**

- aesthetic,
- easy to install / remove.

Principles of operation

The AC 121 single-deflection grille has fixed horizontal vanes to deliver the right air extraction level in a room.

Product description

The AC 121 wall grille is made of anodised aluminium. It features a single deflection with fixed horizontal vanes at a 40° incline.

Fields of application

New, Refurbishment, Non-residential buildings

Installation

- wall installation,
- concealed F3 attachment using friction clips.

Main characteristics

- anodised aluminium, natural satin colour,
- horizontal fixed vanes, 40° incline, 20 mm pitch.
- dimensions from 75 x 75 to 1200 x 6000 mm with increments of 25 mm in length.

General data

Variants	Main material	Type of finish	Colour
11050621	Aluminium	Aluminium	Aluminium with mosquito mesh

Dimensional data

Variants	H (mm)	L (mm)
11050621	100	200

