

## INSTALLATION INSTRUCTIONS FOR HYDRANT M-75 & M-E75

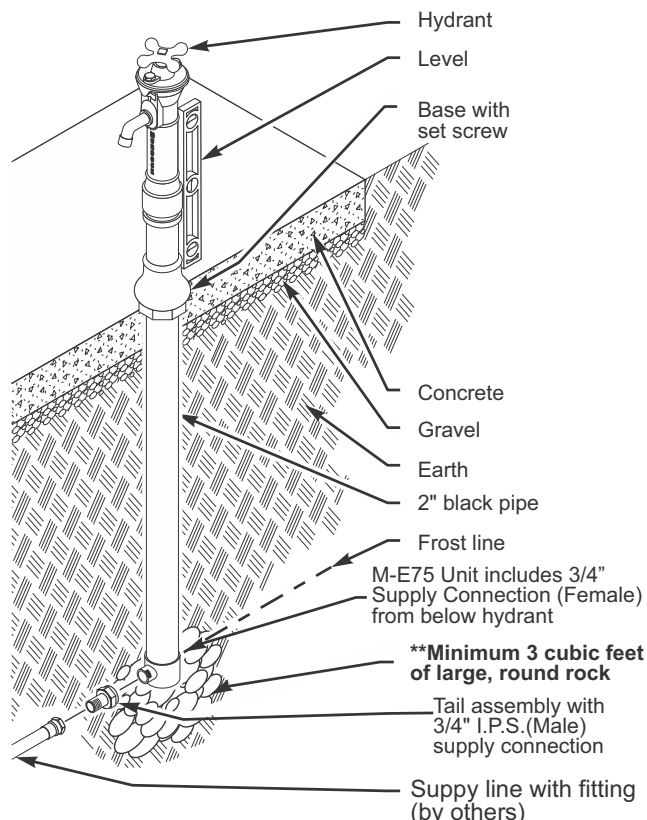
Prepare trench for Water-Supply line. Below hydrant location, prepare hole to trench depth and large enough for a person to work. Lay Water-Supply Line and Waste Line (if required) into trench, allowing extra line length to be trimmed during hook-up. Depending on design and code requirements, lay in drain line also.

Install Hydrant fully assembled as shipped. Position Hydrant at desired location. Brace Hydrant by laying two boards across hole and under Hydrant Base, one on either side of outer casing. To ensure plumb installation, place a bubble level against Hydrant and adjust bracing boards until unit is plumb.

Purge Water-Supply Line. Connect Water-Supply Line, trimming line length as necessary. Supply water pressure shall not exceed 85 psi. If necessary, install Pressure-Reducing Valve in Supply Line. Wrap bottom Drain opening with Filter Fabric. **IMPORTANT: \*\*place a minimum of three cubic feet (0.085 cubic meter) of large round rock under drain opening.** Check local codes. Local soil conditions may require more rock for drainage.

Back-fill Trench and Hole. Compact back-filled earth. Remove bracing boards. If necessary, loosen set screw in base and adjust vertical position of base on outer casing so that bottom of flared part of base is at grade level.

If Concrete Slab is desired, prepare Hole surrounding Hydrant to accommodate Concrete Slab. Spread and compact Gravel as necessary. Pour Concrete up to bottom of flared part of Hydrant Base. Finish concrete as necessary.



## MAINTENANCE INSTRUCTIONS FOR HYDRANT M-75 & M-E75

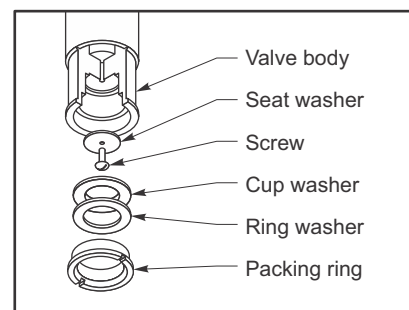
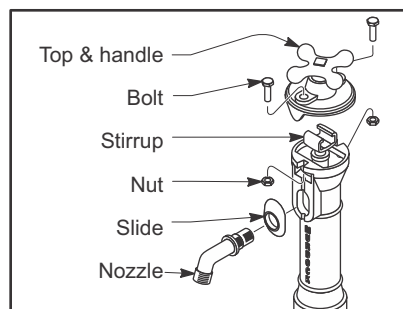
All normal maintenance is done from above grade. Washers should normally be replaced annually. Refer to "Replacing Washers". Remove Bolts and Nuts securing Top to Stock. Lift Top from Stock, sliding Screw Flange under Top from Stirrup. Unscrew and remove Nozzle from Stock, taking care to catch Slide. Take hold of Stirrup and raise Supply-Line Assembly out of Stock-and-Outer-Casing Assembly.

At bottom of Supply-Line Assembly, unscrew Packing Ring from Valve Body and remove Ring Washer and Cup Washer. Remove Seat-Washer Screw and Seat Washer. Replace Seat Washer. Replace Cup Washer and Ring Washer, and Screw Packing Ring into Valve Body.

Gently lower Supply-Line Assembly into Stock. As Stirrup approaches top of Stock, lower assembly very carefully to ensure that Valve Body at bottom of assembly seats properly over valve Stem underground.

Rotate Stirrup to ensure that Nozzle opening in Tee is oriented toward opening in Stock. Make certain that tee end of Nozzle is inserted through slide with tongue of Slide oriented toward Tee end of Nozzle. Apply pipe-joint compound to Tee end of Nozzle, insert Tee end of Nozzle through opening in Stock, and screw Nozzle into Tee.

Make certain that long side of Slide is oriented upward and that Slide Tongue fits into groove in Stock. Tighten Nozzle, making certain that Nozzle Outlet is oriented downward.



## REPLACEMENT OF WASHERS

1. Turn off the water Supply to the Hydrant
2. Remove the Nozzle and Top Bolts. The Nozzle is removed by turning the locknut counterclockwise.
3. Pull complete inner works assembly out of hydrant casing.
4. The Washers are located in the brass valve body at the lower end of the inner works.
5. Remove valve packing ring, cup and ring washers with a flat screwdriver and the screw that holds the seat washer in place.
6. Replace seat, cup and ring washers; tighten valve packing ring hand tight so that the cup and ring washers stay in place.
7. Re-assemble the hydrant in the reverse order of disassembly.

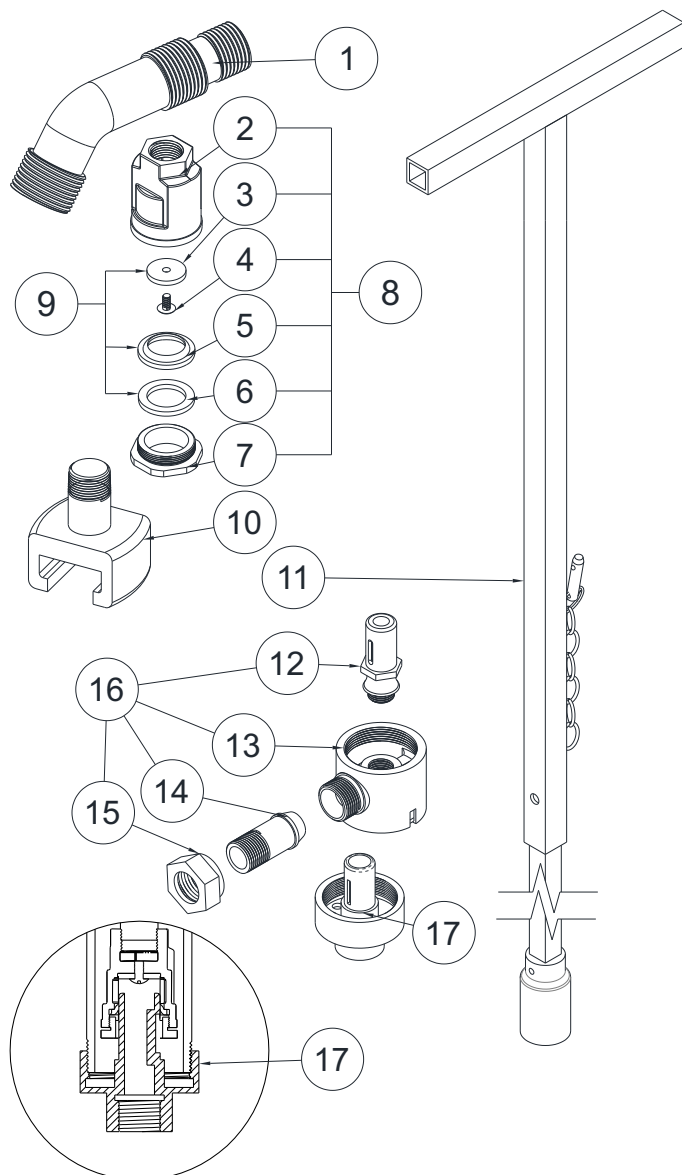
For more assistance please follow the link located Below

Please refer to the Link or QR code provided.

[TROUBLESHOOTING VIDEO](#)



## REPLACEMENT PARTS, KITS, & TOOLING



**NOTE:**

1. When replacing Gasket lather with Vaseline

**Items 1-11 are intended for Both M-75 & M-E75**

**M-75 Unit:** Items 12-16 are intended for this unit

**M-E75 Unit:** Item 17 is intended for this unit

ITEM	Part number	Description
1	4100-022-199	HYDRANT NOZZLE, BRASS
2	4100-141-199	VALVE BODY 3/4"
3	4100-084-000	SEAT WASHER
4	4100-162-000	SEAT WASHER SCREW
5	4100-082-000	LEATHER CUP WASHER 3/4"
6	4100-083-000	RING WASHER
7	4100-161-199	PACKING RING 3/4"
8	4100-141-001	VALVE BODY KIT
9	4100-082-001	LEATHER WASHER KIT
10	4100-168-199	HYDRANT STIRRUP
11	4102-203-001	VALVE REMOVAL TOOL
12	4100-163-199	1-1/8" HEX, ALLOY 693
13	4100-064-199	BOTTOM CONNECTION
14	4100-060-199	TAIL 3/4" SUPPLY
15	4100-061-199	9-H TAIL NUT 3/4" SUPPLY
16	4100-064-001	VALVE STEM & TAIL KIT
17	4100-127-199	M-E75 BOTTOM CONNECTION 3/4"