

CAN-AM® X3
ELITE SERIES
STAGE 7 STEREO KIT
UTVS-X3-S7-E



COMPATIBLE VEHICLE:
CAN-AM® X3

INCLUDED IN THE KIT

- Wet Sounds Compact 2-Zone Media Receiver Source Unit with SiriusXM-Ready® and NMEA 2000 Connectivity
- UTV Stereo Can Am X3 Wet Sounds MC 20 Lower Mount
- UTV Stereo Can Am X3 Center Console Covers
- UTV Stereo Low Current Harness Only
- UTV Stereo Blue Rocker Switch
- UTV Stereo Rocker Switch Cover - Stereo
- UTV Stereo USB/AUX Flush Mount Adapter
- UTV Stereo 3.5mm to RCA Adapter Cable
- UTV Stereo AM/FM Under Dash Antenna
- UTV Stereo 6 Channel RCA Harness - Front, Rear, Sub + Remote Wire
- UTV Stereo Subwoofer Level Controller with a Rocker Switch Housing, compatible with OEM Ride Command Sub Harness for RZR Pro Vehicles
- UTV Stereo Signature Series 6.5" Speakers (Pair)
- UTV Stereo Can Am X3 6.5" Kick Panel Speaker Enclosures
- UTV Stereo 6.5" RGB Speaker Rings (Pair)
- UTV Stereo Signature Series 6.5" Speakers (Pair)
- UTV Stereo Can Am X3 6.5" Dash Panel Speaker Mounts
- UTV Stereo 6.5" RGB Speaker Rings (Pair)
- UTV Stereo Elite Series Compression Horn 8" Speakers (Pair)
- UTV Stereo Elite Series 8" Cage Mount Pods (Pair)
- UTV Stereo 8" Cage Pod Base (Pair)
- Axia Alloys 1.85" Modular Roll Cage Strap Clamp - Single Black
- Axia Alloys 1.85" Modular Roll Cage Strap Clamp - Single Black
- UTV Stereo 8" RGB Speaker Rings (Pair)
- UTV Stereo Flex 10" Low Profile Subwoofer 1 OHM, Dual Voice Coil
- UTV Stereo Can Am X3 Low Profile Sub Enclosure (Front Driver Side), compatible with all X3 models
- UTV Stereo Flex 10" Low Profile Subwoofer 1 OHM, Dual Voice Coil
- UTV Stereo Can Am X3 Low Profile Sub Enclosure (Front Passenger Side), compatible with all X3 models
- UTV Stereo Elite Series 4 Channel Amplifier
- UTV Stereo Elite Series Mono Amplifier
- UTV Stereo Can Am X3 Large Upper Amplifier Mount
- UTV Stereo BAWG Amp Power Harness for Installation (86" Length - 80 Amp Fused)
- UTV Stereo Bluetooth RGB Controller Kit - Includes RGB Controller & Rocker Switch Harness
- UTV Stereo Amplifier to Speaker Wire & RGB Harness
- UTV Stereo Amplifier to Dual Subwoofer Wire Harness
- UTV Stereo Y-Adapter Harness for 6-Pin Speaker Wire & RGB
- UTV Stereo Enclosure Side Harness for 6-Pin Speaker Wire & RGB

We want to make sure that your system is installed and tuned correctly. We are here to help!
Reach out to us at info@utvstereo.com or call us at 480.616.2299

INSTRUCTIONS

FOLLOW INSTRUCTIONS TO INSTALL
YOUR UTV STEREO STAGE KIT



Each individual part has its own specific install instructions
and/or install video that can be found on that particular items page at utvstereo.com
Use this resource to install each part individually.

Step 1: Remove seats and disconnect the battery.

Step 2: Disassemble upper dash. Remove any fenders or panels to expose where the amplifier mount will be mounted. (Reference [Large Upper Amplifier Mount Instructions](#))

Step 3: Remove both front and rear center console panels to expose where power harnesses will be routed. (Reference [Power Harness Instructions](#))

Step 4: Install amplifier mount . (Reference [Large Upper Amplifier Mount Instructions](#))

Step 5: Install amplifiers onto amplifier mount.

Step 6: Route power harness from the bus bar up to the amplifier. REMOVE FUSE DURING INSTALL. (Reference [Power Harness Instructions](#))

Step 7: Install sub boxes and sub woofers into the vehicle and route wires to the amplifier. (Reference [Sub Box Instructions](#))

Step 8: Install source unit into lower source unit mount. (Reference [Lower Source Unit Mount Instructions](#))

Step 9: Install source unit mount into center pocket. (Reference [Lower Source Unit Mount Instructions](#))

Step 10: Connect power wires from the source unit to the source unit harness. Connect source unit harness to bus bar and mount the switch. (Reference [Source Unit Harness Instructions](#))

Step 11: Connect and route remote wire and RCA wire from source unit to amplifier. (Reference [Wire Diagram](#)) (If you have a rear camera, reverse trigger, or USB/AUX connect them during this step)

Step 12: Install RGB controller harness switch. Connect and route RGB wires and RGB controller near the amplifier. Route bus bar wires to bus bar. (Reference [RGB Controller Kit Instructions](#))

Step 13: Install dash panels and cage pods. (Reference [Dash Panel and Cage Pod Instructions](#))

Step 14: Connect speaker wire and RGB wire to all speakers. Install speakers into dash panels and cage pods. (Reference [Dash Panel, Cage Pod, and Speaker Instructions](#))

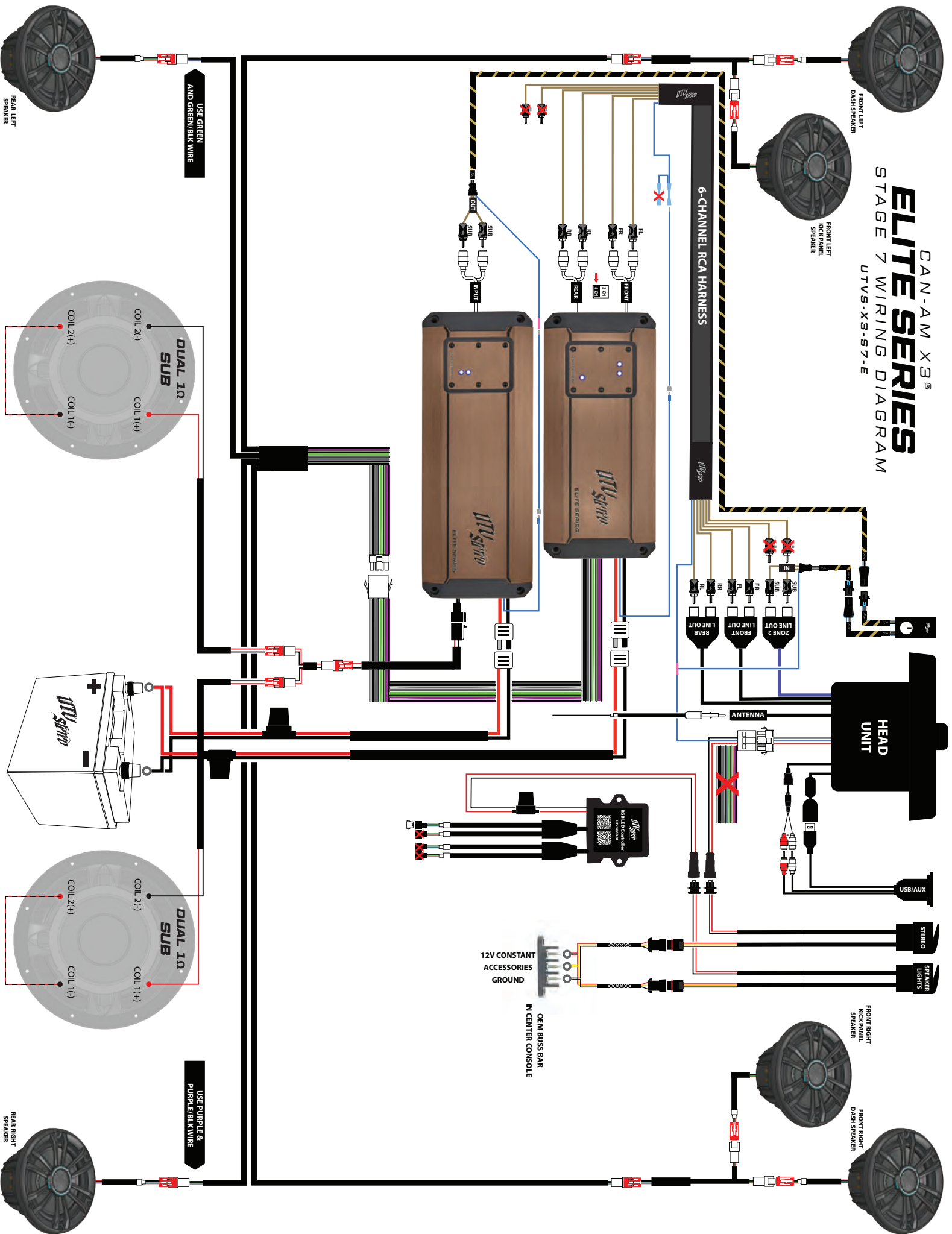
Step 15: Route wires from speakers to amplifier or RGB controller and make connections. (Reference [Wire Diagram](#) and [RGB Controller Wire Diagram](#))

Step 16: Install fuse into power harness and reconnect the battery.

Step 17: Power on and tune amplifier. (Reference [Page 4 & 5](#))

Step 18: Install center console covers. (Reference [Center Console Cover Instructions](#))

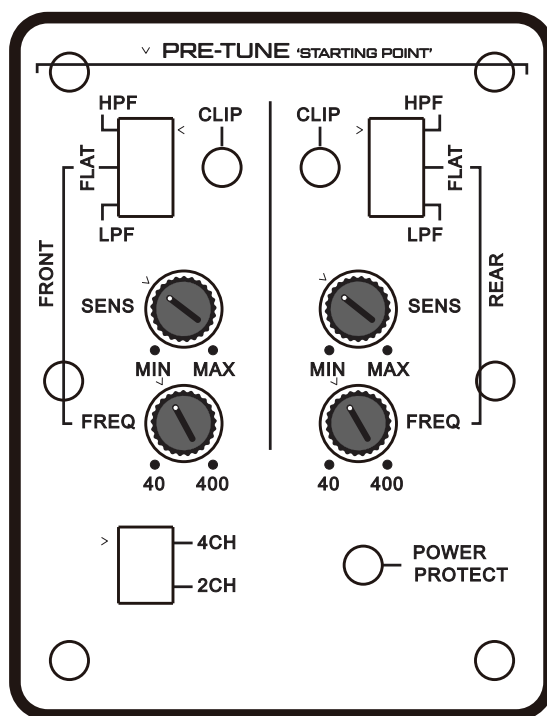
CAN-AM X3[®]
ELITE SERIES
STAGE 7 WIRING DIAGRAM
UTV-X3-S7-E



TUNING YOUR SYSTEM

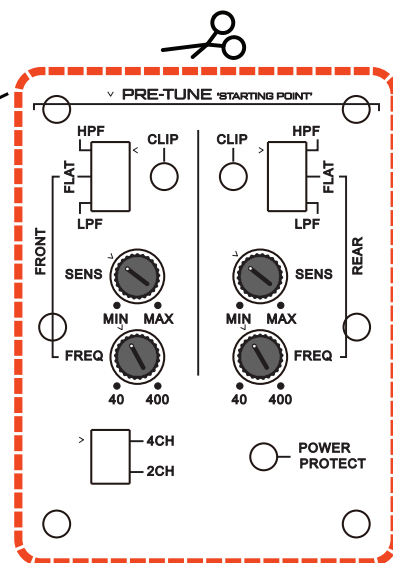
THIS WILL SHOW YOU EXACTLY WHERE TO SET THE
ADJUSTMENTS OF YOUR AMPLIFIER(S) USE THESE
SETTINGS FOR OPTIMAL PERFORMANCE!

ELITE SERIES UTVS-E1000.4D



TUNING BLUEPRINT 'STARTING POINT' ►

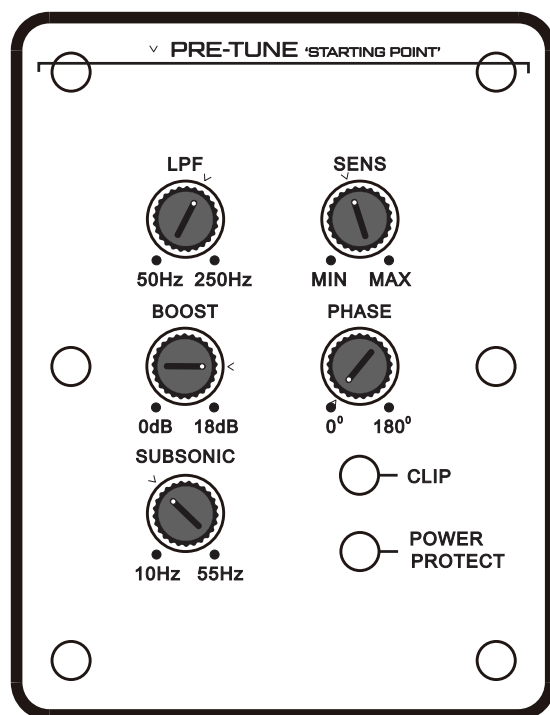
1. Cut out the image along the red outline.
2. Align the cutout image with the amplifier tuning panel
3. Make your adjustments



TUNING YOUR SYSTEM

THIS WILL SHOW YOU EXACTLY WHERE TO SET THE
ADJUSTMENTS OF YOUR AMPLIFIER(S) USE THESE
SETTINGS FOR OPTIMAL PERFORMANCE!

ELITE SERIES UTVS-E1200.1D



TUNING BLUEPRINT 'STARTING POINT' ►

1. Cut out the image along the red outline.
2. Align the cutout image with the amplifier tuning panel
3. Make your adjustments

