

TW-SP01有屏款说明书，70×110mm

05

MAINTENANCE AND UPKEEP

Scent diffusers require regular cleaning and maintenance every 1-2 months when in normal use. Below is the method for cleaning.

① Spray nozzle cleaning:
◆Use 95% "alcohol + cotton swab" to gently wipe the nozzle, removing the residue of essential oil liquefaction.
◆Cleaning the atomizer core can be cleaned by soaking a cotton swab in 95% alcohol and wiping the core with it, or by soaking the atomizer core in alcohol and then allowing it to dry.
② Oil bottle cleaning:
◆Before changing essential oils each time, clean the oil bottle with alcohol and allow it to dry completely.

When equipment is not used for a long period, it is necessary to clean the internal nozzles and other components thoroughly.

◆Add 95% industrial alcohol to the empty bottle.
◆Turn on the device and run it for 10-15 minutes.
◆Turn off the device, pour out the alcohol from the bottle and let it dry before reassembling the device.
◆Power off storage, unplug the power supply, to prevent electrostatic damage to the circuit.

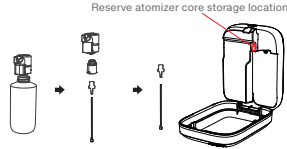
06

REPLACE THE ATOMIZER CORE

The atomizer head assembly is divided into: atomizer head, essential oil bottle, oil suction tube, filter, atomizer cover, and atomizer core.

Operation steps: First, unscrew the essential oil bottle, pull out the oil suction tube, and remove the atomizer cover with a holding tool like tweezers. The white part on top is the atomizer core. Wipe the essential oil dry with a dry cloth, then pinch the atomizer core and unscrew it to the right to remove it. Next, replace it with a new atomizer core, and then reassemble all parts back into the device.

Hint: Please pay attention to aligning the oil tube with the atomizer core hole inside the atomizer cover when reinserting it, and ensure all components are tightened to prevent detachment.



07

WARRANTY POLICY

Replacement/Maintenance is guaranteed for one year from the date of purchase.

If you need to replace components for free within the warranty period, the device must be under normal use conditions and the failure must be due to manufacturing reasons to provide warranty. During the warranty period, component fees covered by the warranty are waived. This warranty does not include consumables such as oil. To obtain warranty service, please be sure to contact the after-sales department during the warranty period and present the original or copy of the valid warranty card and the official commercial invoice to the relevant departments.

The following situations do not enjoy free warranty service.

① Damage & problems caused by Accidents & Fire!
② Not used properly and wrong operation.
③ Repaired by non-professionals, causing some parts damaged.
④ Damaged during transportation.
⑤ Without our warranty card.
⑥ Without proper cleaning for a long time.
⑦ The machine is overworked.
⑧ Machines & Parts not from us.
⑨ Machines not purchased from official channels.
⑩ Send the machines back without permit from the manufacturer.

08

PACKAGING ACCESSORIES

Scent Diffuser x1	Power adapter x1
User Manual x1	Key x2
Essential oil bottle x1	Wall-mounted hooks x1
Atomizer core x1	Backup rubber seal x1

[Please follow the following safety usage tips to avoid device damage.]

SAFETY PRECAUTIONS FOR USE

Safe use:


- After loading the essential oil, the device must always remain upright and facing upwards, not inverted or tilted, otherwise it may damage the internal components of the device.
- During the transportation of the equipment, it is necessary to empty the essential oils from the bottles to avoid oil leakage and damage to the equipment.
- This device cannot be used for air humidification and cannot be filled with water;
- Please place it in a location inaccessible to children and pets.
- Store in a dry and cool place, do not use this device in high temperature or humid environments.

Forbidden:

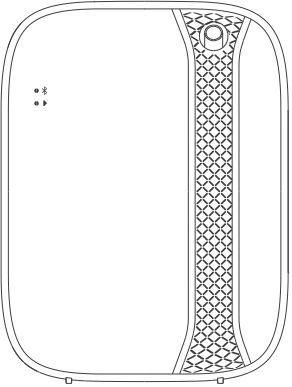
- Do not cover the equipment in use.
- Prohibit the use of overloaded power outlets, power cords, or damaged power plugs, as this may damage equipment or even cause fires.
- Essential oils should not be ingested and should be kept away from contact with the eyes. In case of eye contact, rinse thoroughly with plenty of water; if there is a strong sensation, seek medical attention immediately.
- Please do not disassemble the equipment. If any abnormalities are found in the product, please contact us promptly.

User Manual

AROMATIC & PRACTICAL SCENT DIFFUSER



Scent machine



[Please read the manual carefully before use and keep it properly]

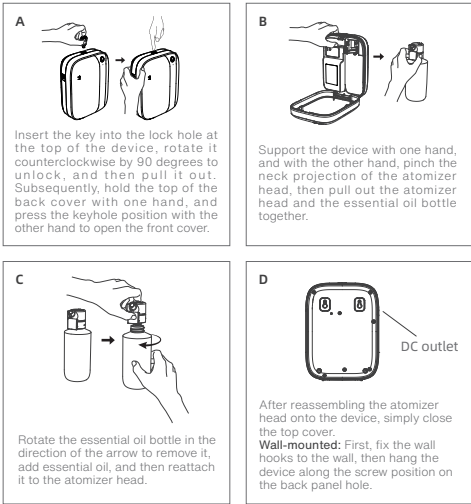
绘制	客户代码	物料名称	规格/mm	材质/工艺	版本/日期	审核	备注
设计部·冯		TW-SP01说明书	70×110	四折页风琴折 157克铜版纸	2025.04.29		



Please carefully read the user manual for the screen version and follow the instructions in the manual.

PRODUCT INFORMATION		
Size:158×78×212mm	Weight:800g	Power:5W
Voltage:DC 12V	Capacity:400ml	Coverage:500-1000m³

01 INSTALLATION INSTRUCTIONS



Warning: After loading essential oils, the device must always remain upright and facing upwards, not inverted or tilted, otherwise it may damage the internal components of the device.

02 APP OPERATION INSTRUCTIONS

Scan the QR code with your phone to download and install the "Art Diffuser" APP, enter the page, select "Start Adding", search for and connect the device.

Note: It is recommended to allow all APP permission configurations, including location services, connecting to Bluetooth, and sending notifications.



- ◆ APPScan the QR code to download and install the APP.
- ◆ Run the APP to enter Bluetooth mode and add a device.
- ◆ Search and connect the device.
- ◆ Device Status Page.
- ◆ Set the work mode.
- ◆ More settings in the upper right corner of the status page

After successfully connecting the device, you will see the following status page. Please refer to the setup instructions.

- Switch:** The mobile phone can turn on/off the device operation status with one press.
- Lock:** The phone can turn on/off the device lock with one press.
- Fan:** The mobile phone can turn on/off the fan with one press.
- Reset:** The phone can be reset to factory settings with a single button press.

Timers: You can create 5 work modes, click on the mode window, and you can customize and edit the day of the week, time period, and frequency.

◆ **Week setting:** Select the day of the week to work

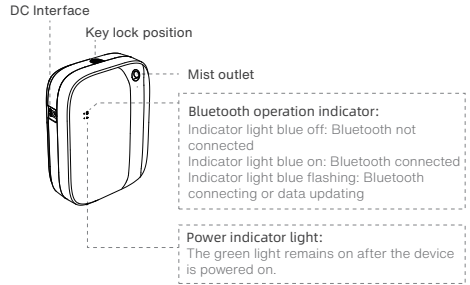
◆ **Schedule setting:** Slide the dial left and right to select the work time period. Note: It is not allowed to set a time spanning 2 days (the end time cannot be earlier than the start time). If you need to set work time that spans 00:00, simply set two continuous time periods separately. For example, if you need to set work from 23:00 to 02:00, you can set it as two groups: 23:00 to 23:59 and 00:00 to 02:00.

◆ **Frequency setting:** Swipe left or right on the dial to select the operating frequency

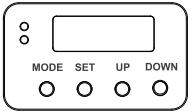
On duration: The maximum is 200 seconds, the minimum is 5 seconds

Pause duration: The maximum is 600 seconds, the minimum is 20 seconds

03 INDICATOR LIGHT / BUTTON



Button diagram illustration



MODE ◆ Set the working mode, operating frequency, and turn pages.
◆ Long press the MODE button for 10 seconds to restore factory settings, with the factory settings parameters being: the air pump defaults to running for 60 seconds and stopping for 200 seconds, and the time is set from Monday to Sunday, 08:00-22:00.

SET ◆ Set time and day
◆ Long press SET for 5 seconds to turn on/off the device lock

UP ◆ Increase value
◆ Long press for 5 seconds UP, to turn on/off the fan

DOWN ◆ Decrease value

Hint: The screen backlight will turn off and enter the sleep mode after 10 seconds of no operation, and pressing any buttons while in sleep mode can turn on the screen.

Set the system time by buttons

- ◆ Press the **[SET]** button for the first time to enter the hour setting. The hour digits will flash, adjust the hour time by pressing the **[UP/DOWN]** buttons.
- ◆ Press the **[SET]** button for the second time, the hour is confirmed and set, and move to the minute setting. The minute digits will flash, adjust the minute time by pressing the **[UP/DOWN]** buttons.
- ◆ Press the **[SET]** button for the third time, the minute is confirmed and set, and move to the workday setting. The workday digits will flash, adjust the workday time by pressing the **[UP/DOWN]** buttons.
- ◆ Press the **[SET]** button for the fourth time, confirm that the system time setting is complete.

Button settings for working mode (total of 5 groups)

A First, press the [MODE] button, the LCD display shows the factory setting time, this machine can set 5 working modes. For example: set 8 am-10 am, 11 am-12 pm, 1 pm-2 pm. Crossing over 00:00, set two time periods, such as the first period 08:00-23:59, the second period 00:01-06:00.

The first time you press the **[SET]** button, you enter the start time setting for the first time period, the hour digits flash, and you adjust the hour by pressing the **[UP/DOWN]** buttons. Press the **[SET]** button for the second time, the hour setting is completed. The minute digits flash. Adjust the minute by pressing the **[UP/DOWN]** buttons. Upon the third press of the **[SET]** button, the minute setting is completed, and move to set the work day. Pressing the **[UP]** button once will display the symbol "▲" at the top of the LCD screen in the day of the week column, indicating that the workday is selected. If "▲" is not displayed, it means it is not selected. Then press **[DOWN]** to move right and continue setting other day combinations.

B Press the [MODE] button for the second time to set the off time. The first press of the **[SET]** button enter the setting of hour, adjust the hour by pressing the **[UP/DOWN]** buttons; the second press of the **[SET]** button completes the hour setting, and the minute digits begin to blink, adjust the minute by pressing the **[UP/DOWN]** buttons.

C Press the [MODE] button for the third time to enter the spray duration (intensity setting). Adjust the intensity by pressing the **[UP/DOWN]** buttons, select the appropriate intensity, with each press adjusting the duration by 5 seconds, the maximum value is 200 seconds, and the minimum value is 5 seconds.

D Press the [MODE] button for the fourth time to enter the pause duration (intensity setting). Adjust the pause time by pressing the **[UP/DOWN]** buttons. Each press adjusts the duration by 5 seconds, the maximum value being 600 seconds and the minimum value being 20 seconds.

After setting this, you can enter the next group of mode settings as needed, or you can continue pressing **[MODE]** to return to the LCD home page if not needed.

This device complies with part 15 of the FCC Rules. Operation is subject to the following two conditions: (1) This device may not cause harmful interference, and (2) this device must accept any interference received, including interference that may cause undesired operation.

Any Changes or modifications not expressly approved by the party responsible for compliance could void the user's authority to operate the equipment.

Note: This equipment has been tested and found to comply with the limits for a Class B digital device, pursuant to part 15 of the FCC Rules. These limits are designed to provide reasonable protection against harmful interference in a residential installation. This equipment generates uses and can radiate radio frequency energy and, if not installed and used in accordance with the instructions, may cause harmful interference to radio communications. However, there is no guarantee that interference will not occur in a particular installation. If this equipment does cause harmful interference to radio or television reception, which can be determined by turning the equipment off and on, the user is encouraged to try to correct the interference by one or more of the following measures:

- Reorient or relocate the receiving antenna.
- Increase the separation between the equipment and receiver.
- Connect the equipment into an outlet on a circuit different from that to which the receiver is connected.
- Consult the dealer or an experienced radio/TV technician for help.

FCC Radiation Exposure statement

The device has been evaluatec to meel general RF exposure requirement. The device can be used in portable exposure condition without restriction.