

Easy Setting Box

User Manual

Easy Setting Box is an application that allows you to more conveniently arrange windows by splitting the monitor screen into several sections and easily switch the mouse between the smart monitor and computer.

SAMSUNG

Table of Contents

About Easy Setting Box

- 04 What is Easy Setting Box
- 04 Key Features of Easy Setting Box
- 05 User Requirements
- 05 Open Source License

Easy Setting Box Install/ Uninstall

- 06 Easy Setting Box Install
- 12 Easy Setting Box Uninstall

Easy Setting Box Start

- 15 Easy Setting Box Execute
- 21 Easy Setting Box Exit

Controlling the smart monitor mouse

- 22 User Requirements
- 23 Registering a smart monitor and
configuring its settings
- 27 Selecting and deleting a smart
monitor
- 28 Controlling the smart monitor
mouse

Table of Contents

Split Screen Layout

34 **Splitting the Screen**

35 **Split Screen Layout Overview**

Window Layout on Split Screen

Adjusting Split Screen Grid

Initializing Split Screen Grid

Adjusting the Taskbar Brightness

1

About Easy Setting Box

1-1 What is Easy Setting Box

Easy Setting Box is an application that allows you to more conveniently arrange windows by splitting the monitor screen into several sections and easily switch the mouse between the smart monitor and computer. The application comes in handy especially when using multiple monitors, helping you easily and quickly organize and arrange several windows. Easily switch the mouse between the smart monitor and computer.

Automatically dim the always-visible taskbar when it is not used, to prevent OLED monitor burn-in.

1-2 Key Features of Easy Setting Box

Monitor screens can be split into 2 - 6 grids vertically or horizontally. Drag the window to the split screen you desire and it will be automatically arranged in the split screen grid.

Adjust the resolutions of the split screens by adjusting the split screen grid.

Place the mouse pointer on the border of the screen and easily switch the mouse between the smart monitor and computer, without having to use the remote control.

Automatically dim the always-visible taskbar when it is not used, to prevent OLED monitor burn-in.

1-3 User Requirements

- Limitations
This application only works on Samsung Electronics monitors, regardless of type, and is only compatible with applications that support Windows or macOS.
- Operating system
Windows 10 (32/64-bit), Windows 11, and **macOS 12.0** or later are supported. This user manual is written for **Windows 10**.
- Supported languages
Deutsch, English, Español, Français, Italiano, Magyar, Polski, Português, Русский, Svenska, Türkçe, 日本語, 한국어, 简体中文
- Supplier homepage
Homepage: www.samsung.com

1-4 Open Source License

Open Source used in this software can be found on the following webpage.
(<https://opensource.samsung.com>)

2

Easy Setting Box Install/Uninstall

2-1 Easy Setting Box Install

Windows

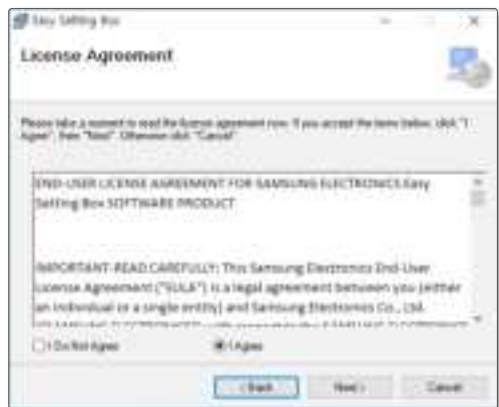
- 1 Double-click the **Easy Setting Box** installation file.
- 2 Click **Next** in the displayed Setup Wizard window.



- 3 Specify the folder to install the program and click **Next**.



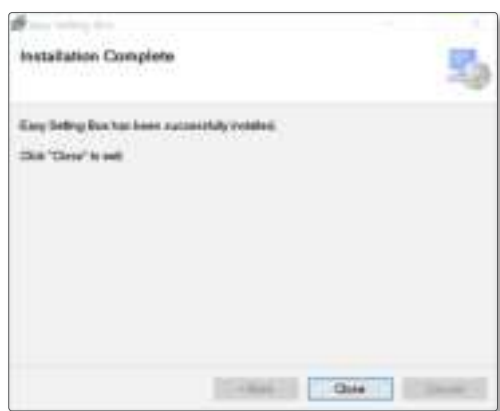
- 4 Select "**I Agree**" and click **Next**.



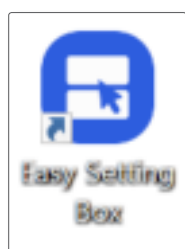
- 5 Click **Next**.



- 6 Click **Close** to complete the installation.

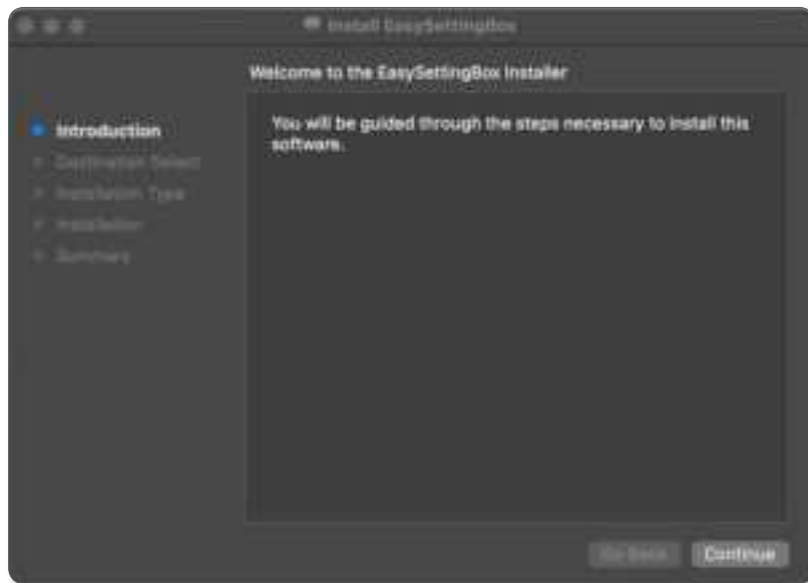


- 7 The executable **Easy Setting Box** icon is created on the desktop when installation is complete. To start the program, double-click the icon.

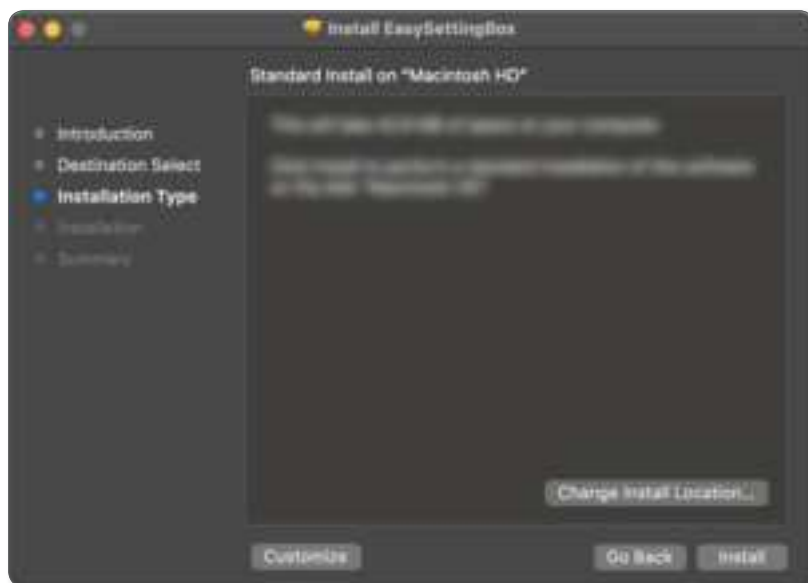


macOS

- 1 Double-click the **Easy Setting Box** installation file.
- 2 When the installer starts, click **Continue**.



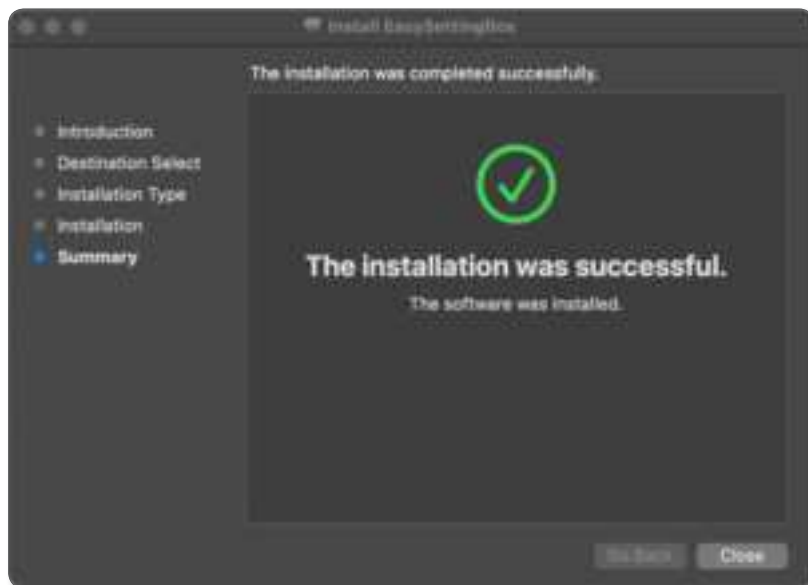
- 3 Specify the installation destination and click **Install**.



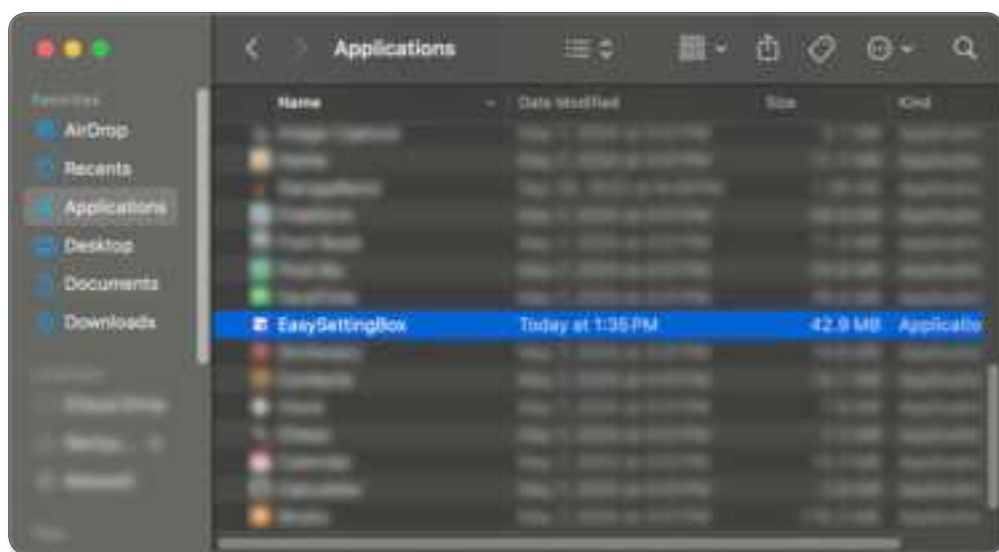
- 4 Enter your password and click **Install Software**.



- 5 Click **Close** to end the installation process.



- 6 After installation is complete, navigate to **Applications** and launch **Easy Setting Box**.

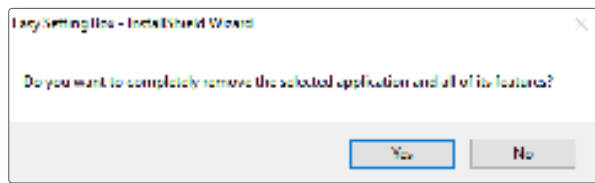


2-2 Easy Setting Box Uninstall

Windows

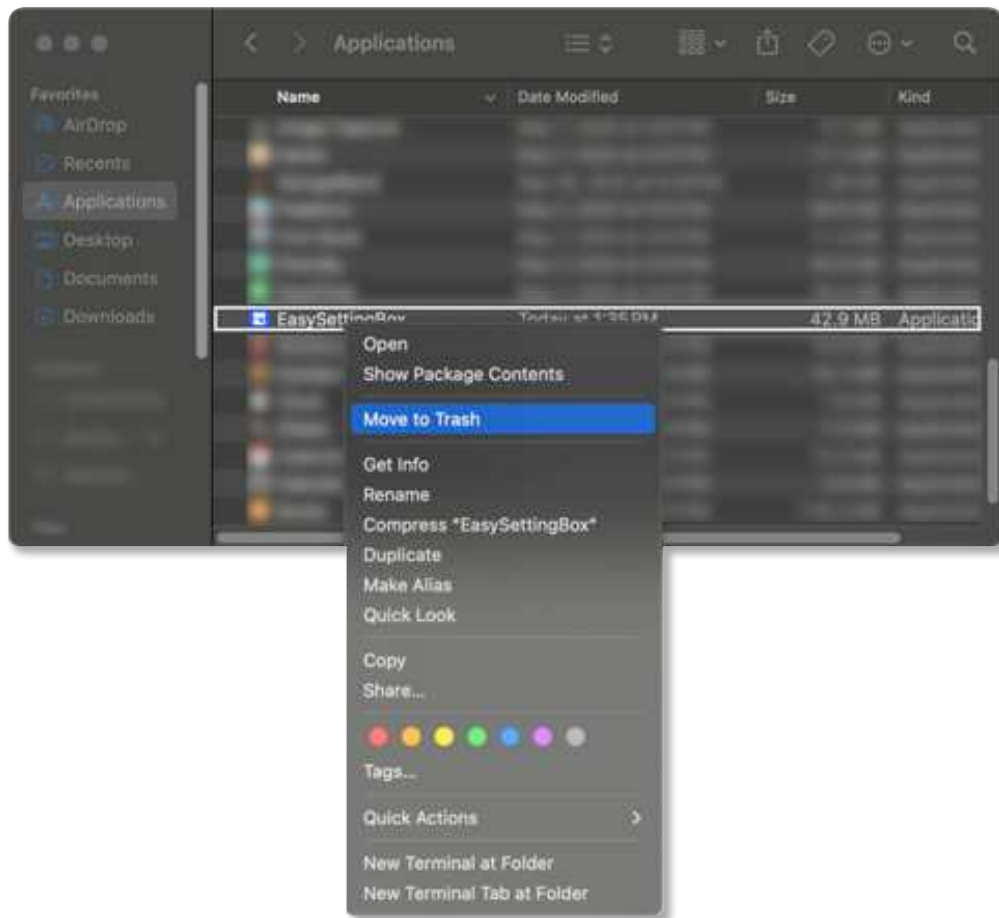
In an error occurs in the installed program, first exit the **Easy Setting Box** and proceed with the following steps to uninstall the program.

- 1 Navigate to **Start** → **Settings** → **Apps**, and find **Easy Setting Box** under **Apps & features**.
- 2 Click **Easy Setting Box**, and then click **Uninstall**. Click **Yes** to start program uninstall.



macOS

- 1 Close **Easy Setting Box** from the **menu bar** or **Dock**.
- 2 Under **Applications**, right-click on **Easy Setting Box** and click **Move to Trash**.



- 3 Enter your password and click **OK**.



3

Easy Setting Box Start

3-1 Easy Setting Box Execute

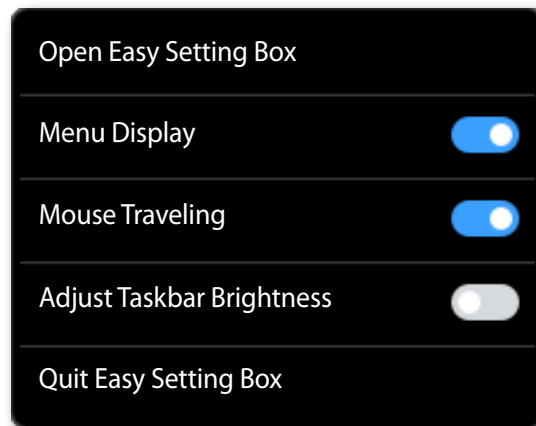
Double-click **Easy Setting Box** from the background screen or click the **Start** button, and then select **Easy Setting Box** from the installed Apps list.

If using macOS, launch **Easy Setting Box** from the list under **Applications** or click the **Easy Setting Box** icon on the **Dock**.

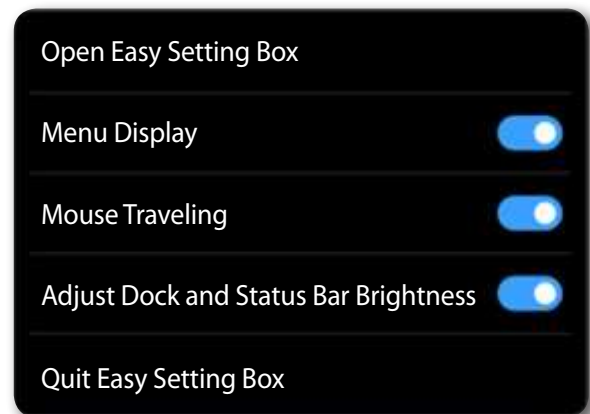
When **Easy Setting Box** is executed it automatically recognizes the current monitor and designates the number corresponding to each monitor.

From the system tray area or **menu bar**, right-click on the **Easy Setting Box** icon. The screen shown below appears.

To display the main screen of Easy Setting Box, click **Open Easy Setting Box**.



Windows

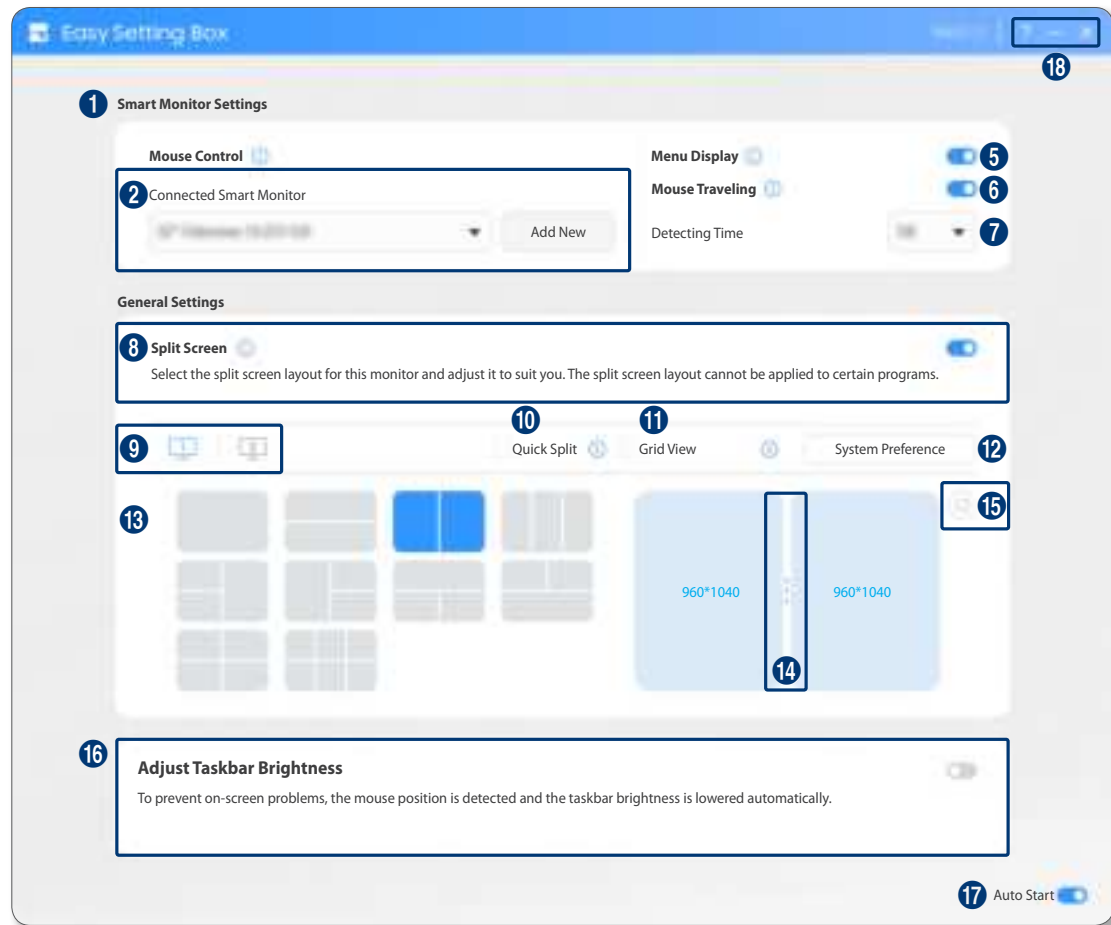


macOS

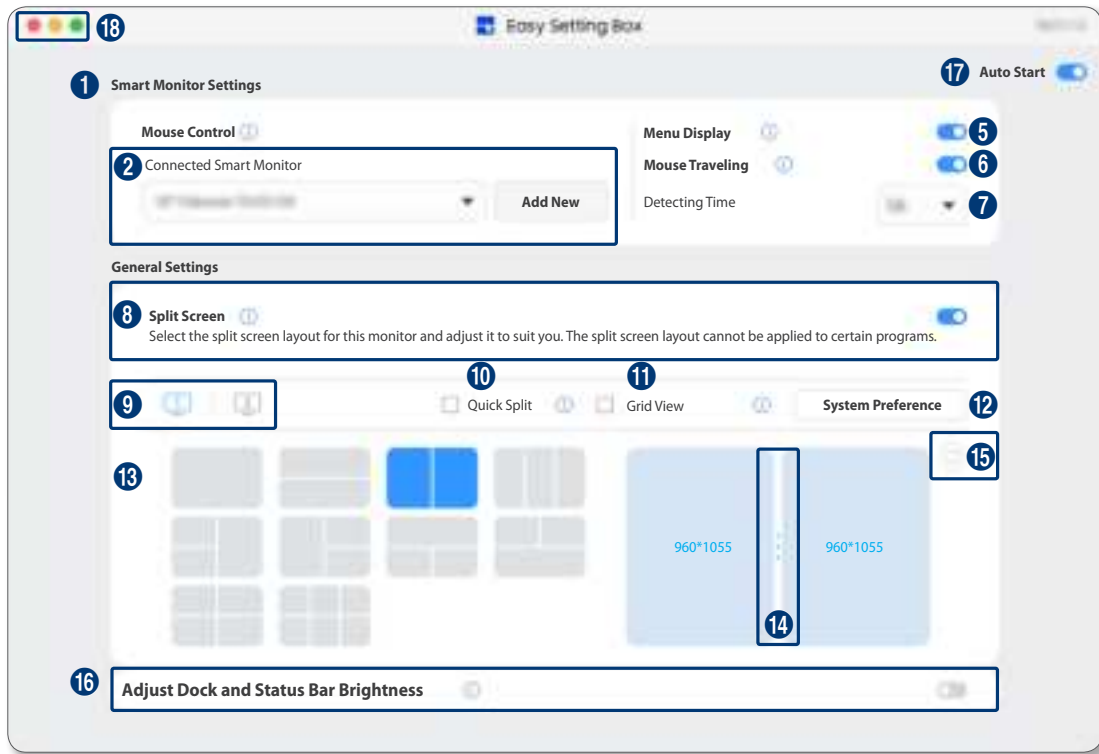
Easy Setting Box Look Around

Run **Easy Setting Box** and the following screen will be displayed.

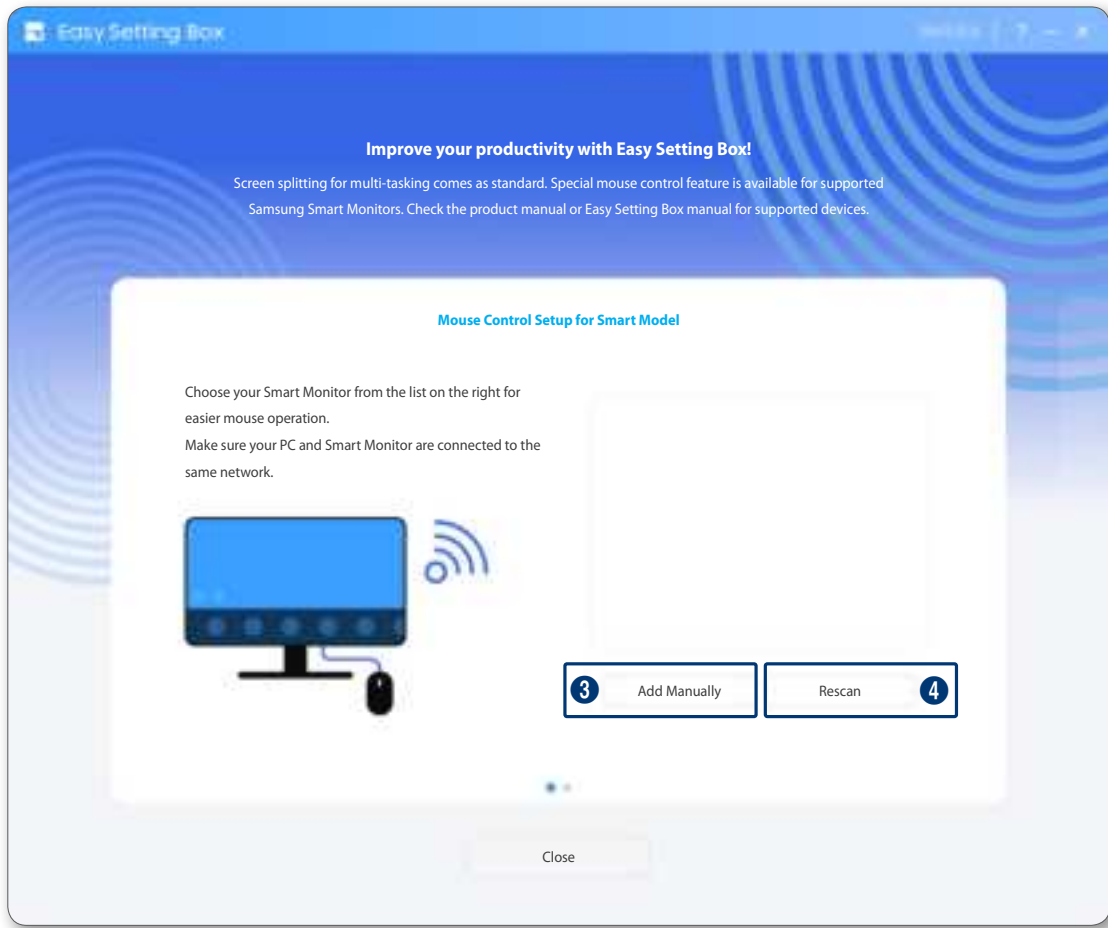
- This user manual uses illustrations for Windows when providing information on the features supported in both Windows and macOS.
- Windows



- macOS
 - For a macOS, the minimum resolution for normal use is 1440 x 900.



From the retrieved device list, click the intended monitor to connect it. The device name can be found from the smart monitor. (**Home > Menu > Settings > All Settings > Connection > Device Name**)



- **Smart Monitor Settings**

-
- 1 Register your smart monitor and use the mouse control feature.
 - 2 Registered smart monitors are displayed in a list. You can check the status of the monitor to be controlled with the mouse or disconnect the monitor. The device name can be found from the smart monitor. (**Home > Menu > Settings > All Settings > Connection > Device Name**)
 - 3 Manually add smart monitors.
 - 4 Search for smart monitors again.
 - 5 Select whether to switch to the Home screen while the smart monitor single-view (single external input) is in use.
 - 6 Select whether to switch to mouse control mode while the smart monitor multi-view is in use.
 - 7 Specify the minimum time required to recognize the cursor positioned on the edge.
-

- **General Settings**

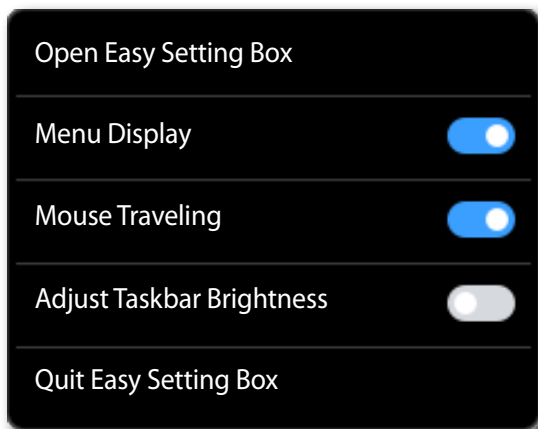
-
- 8 Split the screen.
 - 9 Tabs are displayed according to the number of monitors currently in use. Supports up to 4 monitors .
 - 10 Drag and drop a window under the **Quick Split** menu to easily split the screen in the desired position. Even when the **Quick Split** feature is turned off, you can display or hide the **Quick Split** menu by pressing the Ctrl key while dragging a window. [▶ Window Layout on Split Screen](#)
 - 11 The layouts set for all monitors are displayed simultaneously as guidelines.
 - 12 Brings up the Display Settings dialog box for the operating system. Set the main monitor and change the resolution of the monitor. Displayed terms and features may differ, depending on the version of the operating system on your computer.
 - 13 The icon for the split screen layout currently in use is indicated in blue. Click to select the desired split screen layout configuration.
 - 14 The split screen grids can be adjusted. For more details, refer to the following. [▶ Adjusting Split Screen Grid](#)
 - 15 The split screen grids can be initialized to the default size. For more details, refer to the following. [▶ Initializing Split Screen Grid](#)
-

- **Other settings**

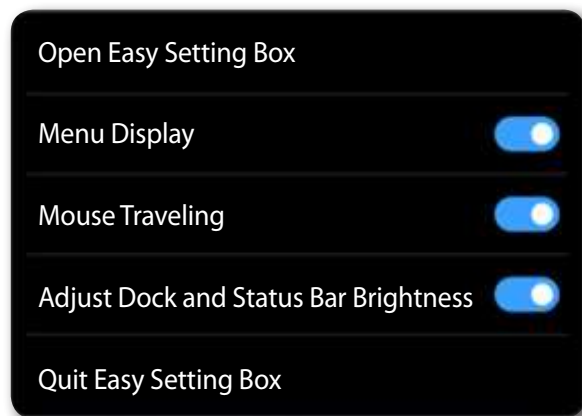
-
- 16 Recognizes the mouse position and automatically adjusts the taskbar brightness, to prevent issues that may occur on the monitor screen.
 - 17 Select whether to automatically start the application or not when the operating system starts.
 - 18 Clicking the **?** button displays the user manual. Clicking the **Minimize** button minimizes the **Easy Setting Box** window to the taskbar or dock, and clicking the **Close** button minimizes the **Easy Setting Box** window to the system tray area or menu bar.
-

3-2 Easy Setting Box Exit

From the system tray area or **menu bar**, right-click on the Easy Setting Box icon and click **Quit Easy Setting Box**.



Windows



macOS

4

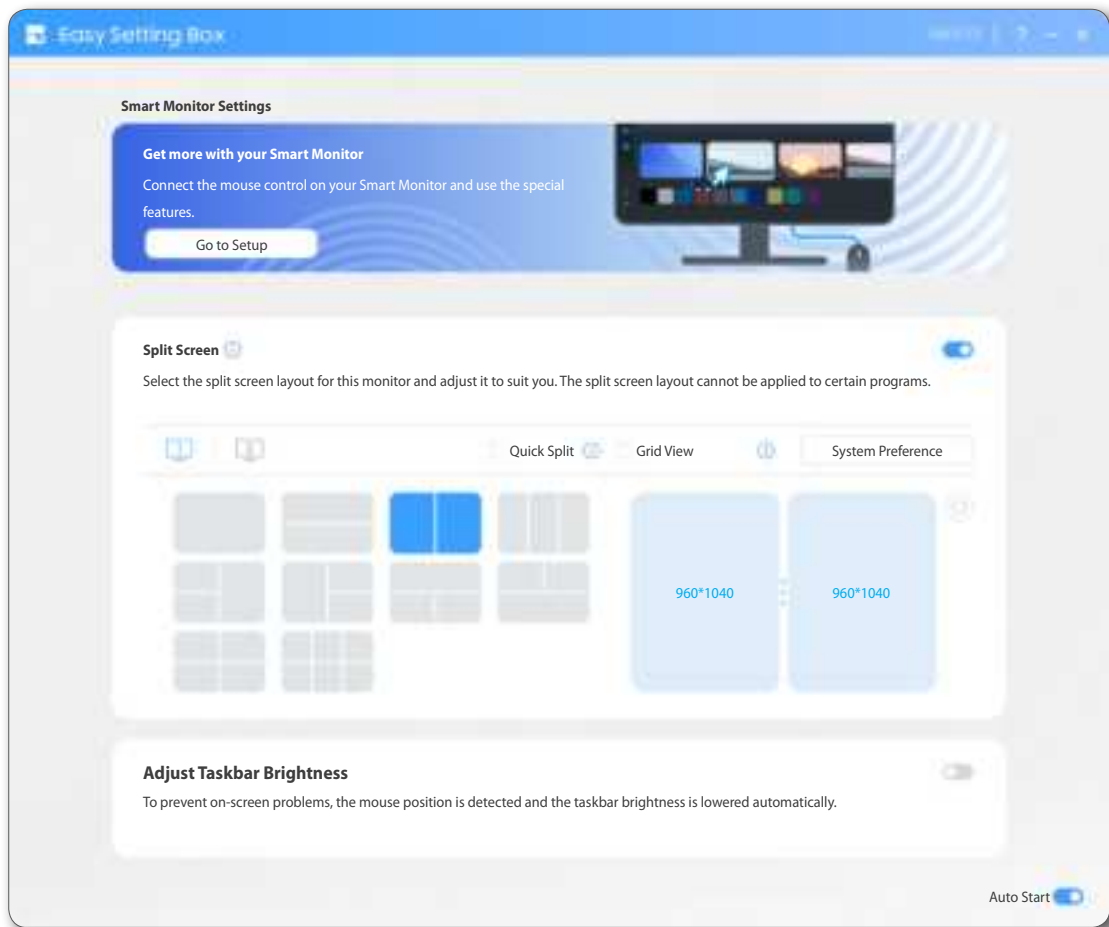
Controlling the smart monitor mouse

4-1 User Requirements

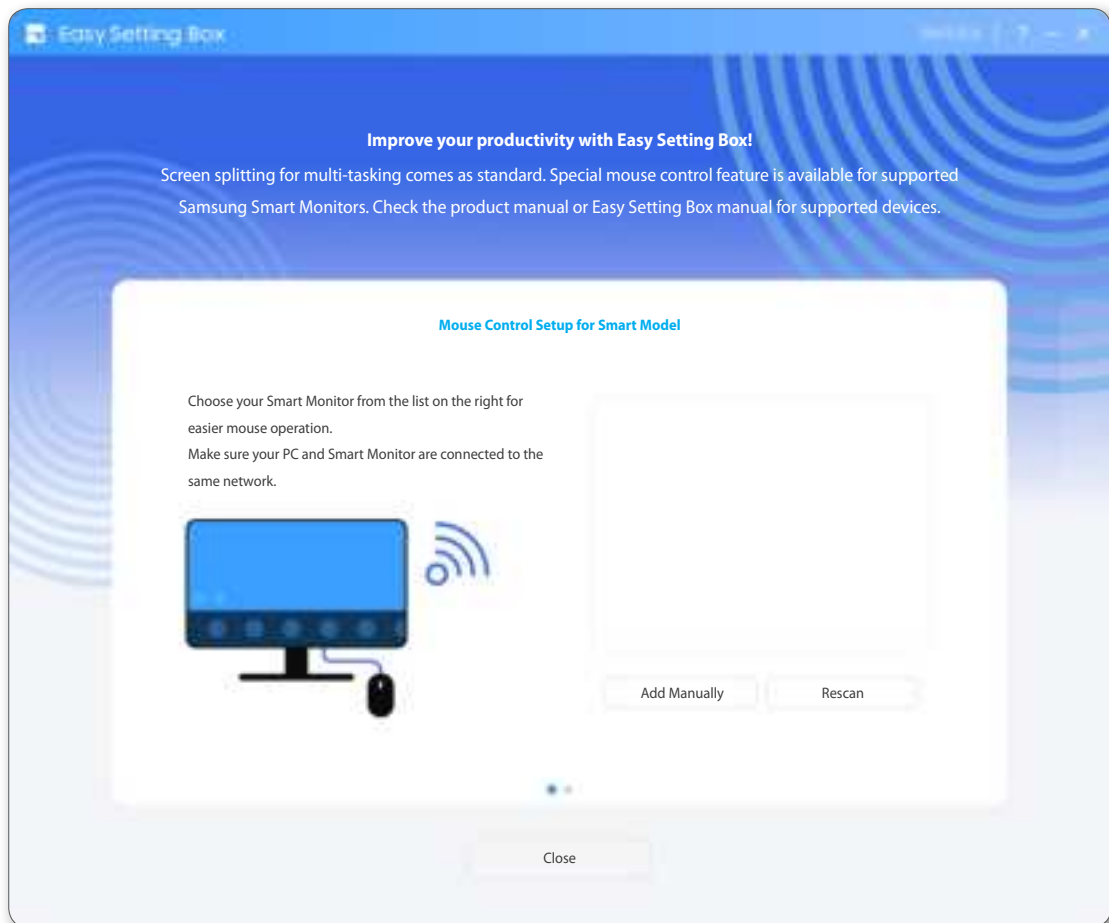
- Add a smart monitor that supports the mouse control feature to Easy Setting Box.
- Ensure that at least one smart monitor is in use.
- Connect the smart monitor and the PC where the Easy Setting Box is installed to the same wireless network.
- To use the Easy Setting Box application from multiple computers, make sure to install the application on each of the computers.
- Make sure that physical cables are connected and cable connection settings are configured in the following order: the mouse ↔ smart monitor ↔ computer. Connect the USB mouse to the smart monitor, and then use a USB hub cable (a USB-B or USB-C cable) to connect a computer to the smart monitor. Next, configure the USB hub cable connection settings from the smart monitor.
- This feature only supports USB input devices and does not support Bluetooth input devices.
- This feature may not be supported on some smart monitors.

4-2 Registering a smart monitor and configuring its settings

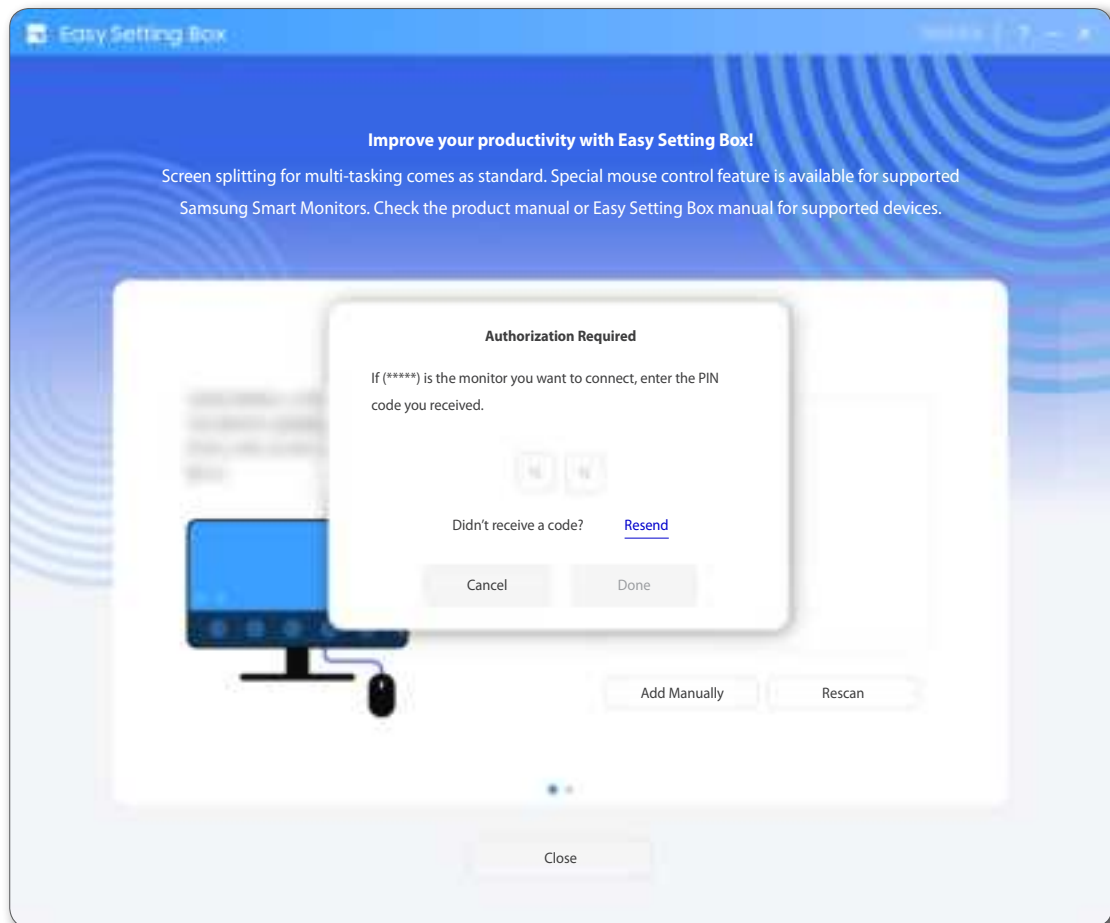
- 1 Open Easy Setting Box.
- 2 Click **Go to Setup**.



- 3 Click **Rescan** or **Add Manually** to register your smart monitor.
- Click the monitor to connect from the automatically retrieved device list. If the intended monitor is not found, click **Rescan** or **Add Manually** to register the smart monitor.
 - Smart monitor search may not work well if the Network discovery feature is turned off on the computer. Make sure to turn it on.
(**Windows Settings > Network & Internet > Advanced network settings > Advanced sharing settings > Network discovery**)

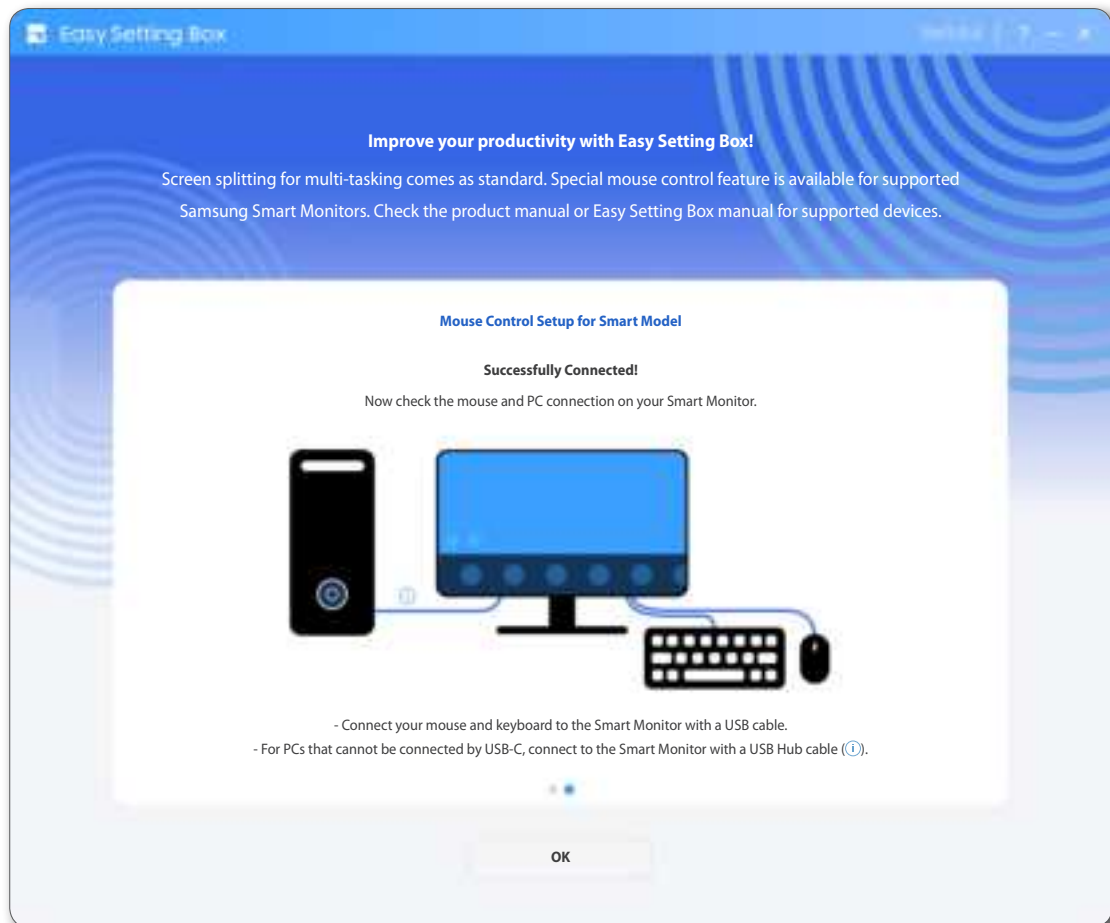


- 4 Select the monitor to connect, and enter the PIN displayed on the monitor.



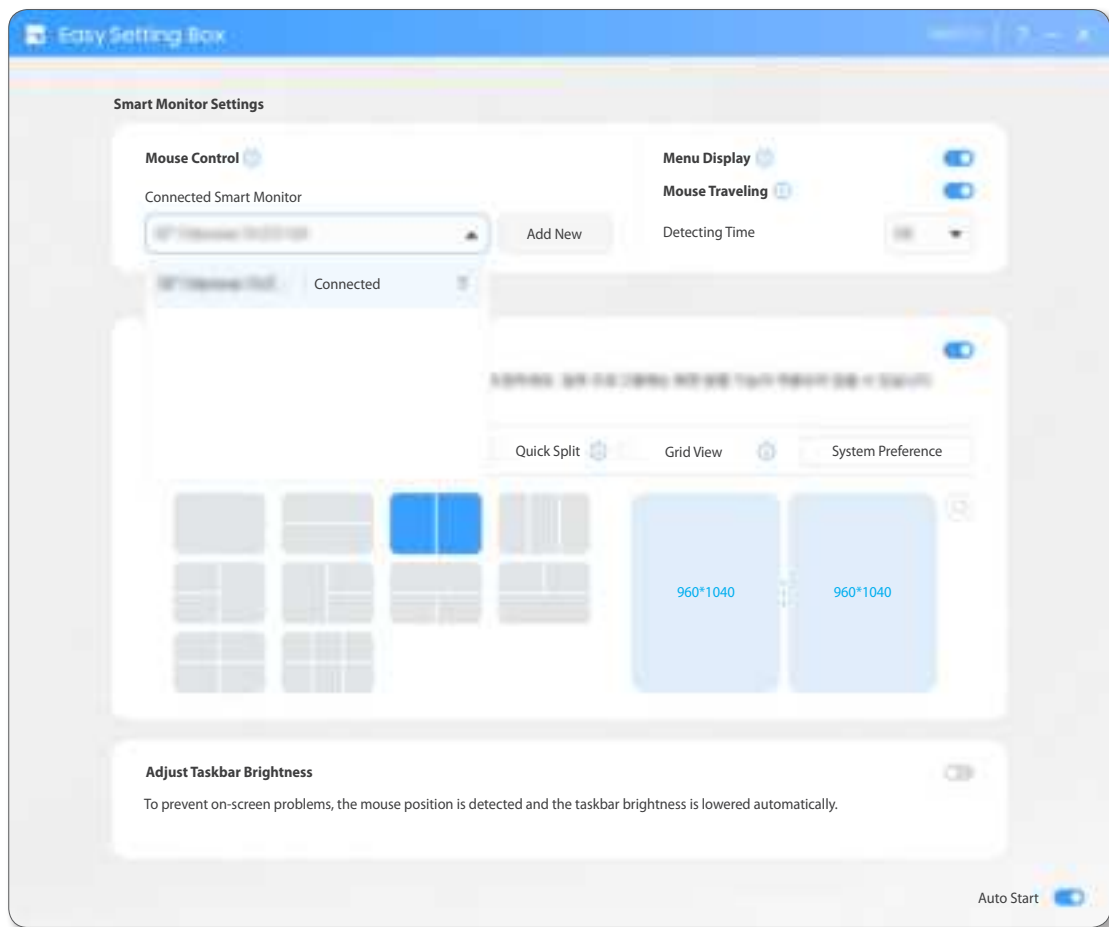
- PIN may not appear on some models.

5 Smart monitor registration is complete.



4-3 Selecting and deleting a smart monitor

- 1 Select the monitor to be controlled with the mouse. The selected monitor appears in the input field. Only the selected monitor can be controlled with the mouse.
- 2 Delete the monitors that will not be controlled by the mouse. Deleted monitors can be reconnected using the **Add New** menu.



4-4 Controlling the smart monitor mouse

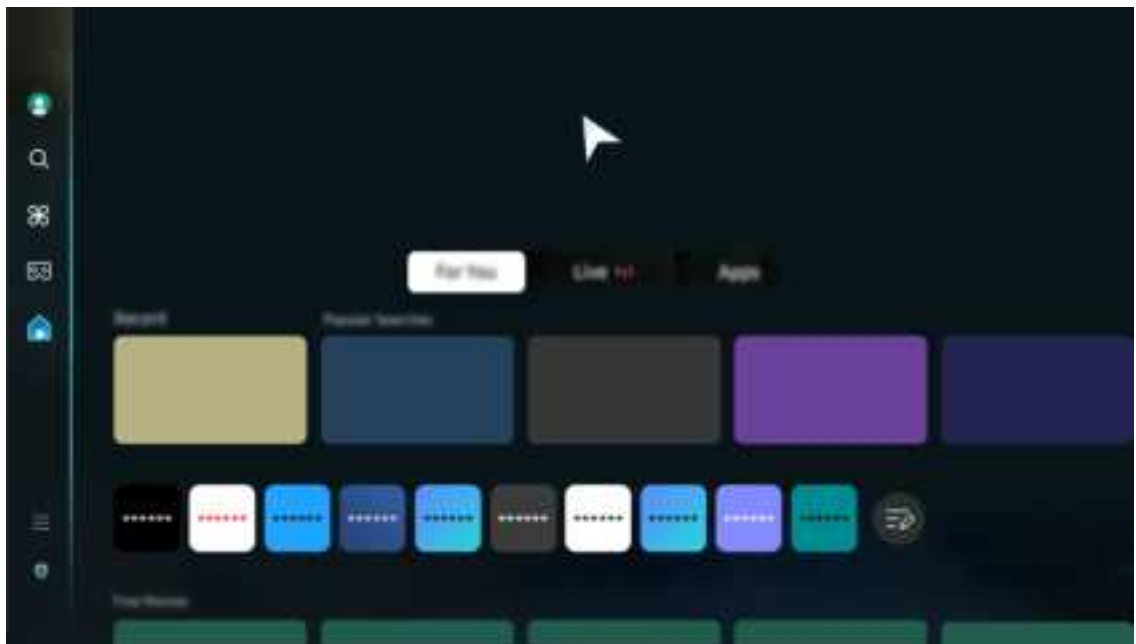
When the smart monitor single-view (single external input) is in use

- 1 Leave the mouse pointer on the border of the screen for a specified amount of time.
- 2 Menus appear after the specified period of time elapses.
 - The menus may appear differently from the screenshots, depending on the model.

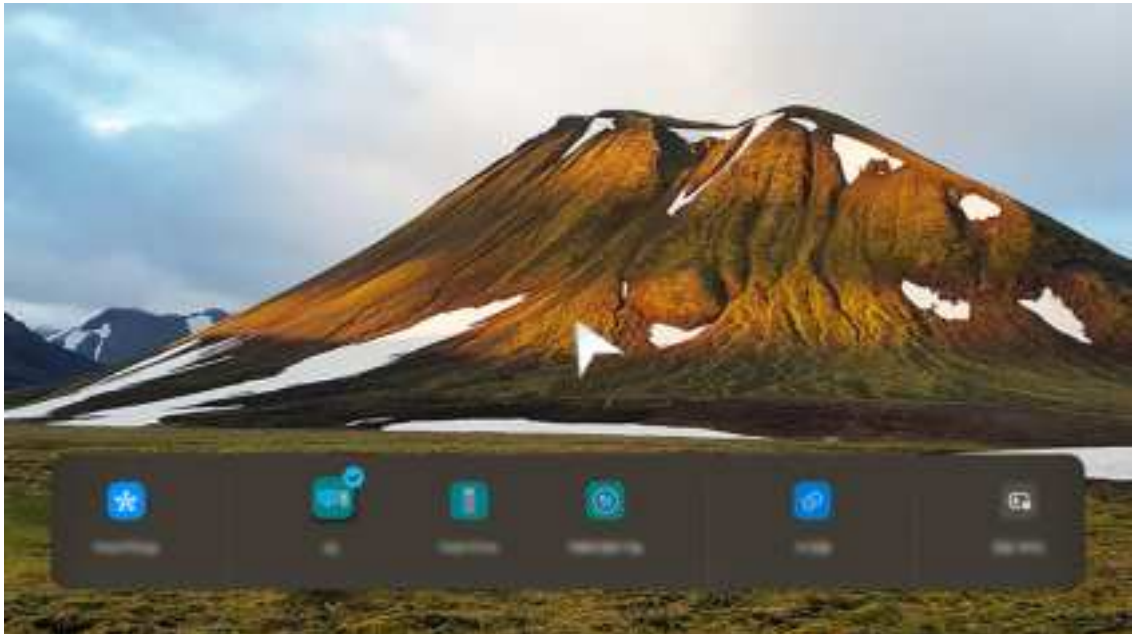


- 1 Home
- 2 Connected Devices
- 3 Settings
- 4 Volume
- 5 Game Bar
- 6 Easy Setting Box Settings

- 3 To access **Home** of the connected monitor, select the **Home** icon from the menus. The mouse switches to the smart monitor.



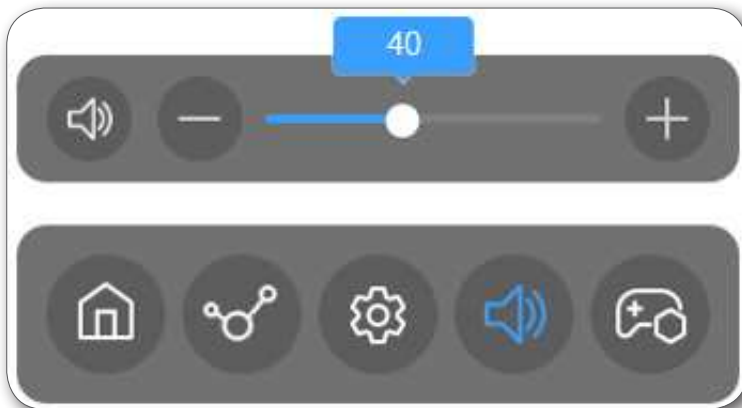
- 4 To access **Connected Devices** for the connected monitor, select the **Connected Devices** icon from the menus.



- 5 To access **Settings** of the connected monitor, select the **Settings** icon from the menus.



- 6 To adjust the **Volume** for the connected monitor, select the **Volume** icon from the menus.



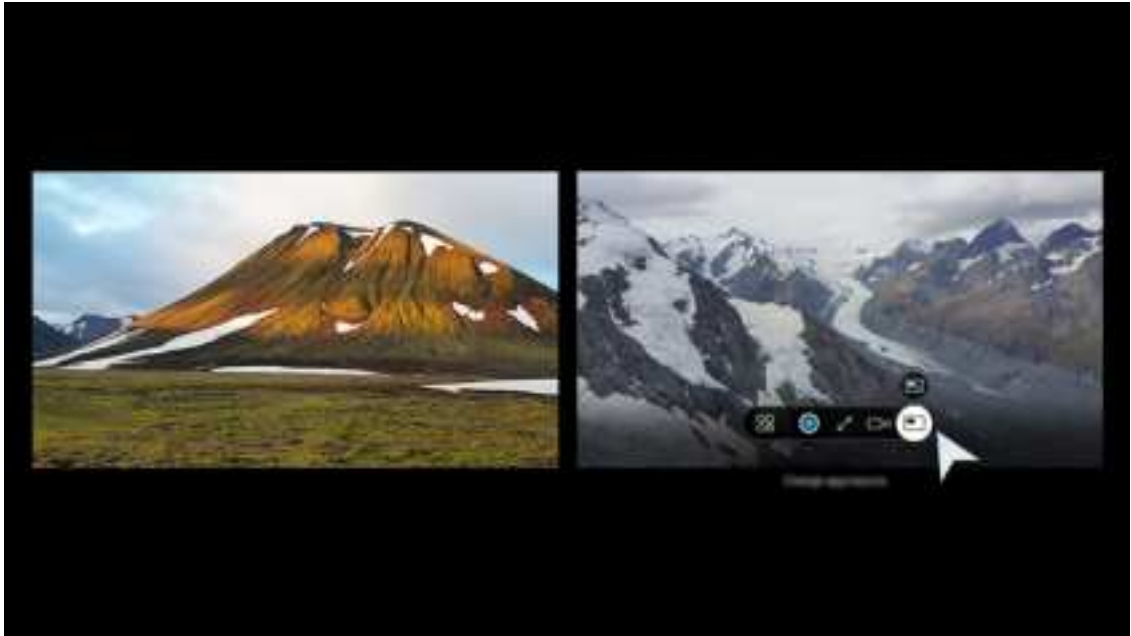
- 7 To access **Game Bar** for the connected monitor, select the **Game Bar** icon from the menus. To use this feature, make sure to turn on **Game Mode** in the monitor settings.



- 8 Select the **Easy Setting Box** icon to display the **Easy Setting Box** app.

When the smart monitor multi-view is in use

- 1 Leave the mouse pointer on the border of the screen for a specified amount of time.
- 2 The mouse connection switches to the smart monitor after a specified amount of time elapses.



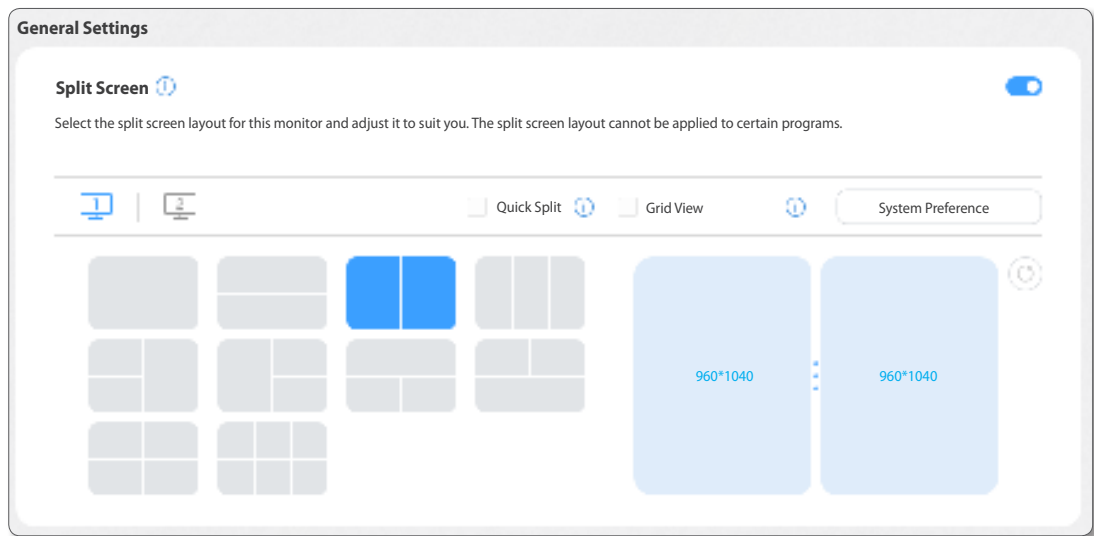
5

Split Screen Layout

5-1 Splitting the Screen

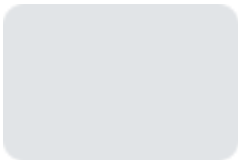
See below to split the screen.

- 1 Open **Easy Setting Box**.
- 2 Under **Split Screen**, click the monitor for which the screen is to be split.
- 3 Click the split screen layout you desire. Blue dividers for the selected split screen layout appear briefly on the monitor screen and then disappear.

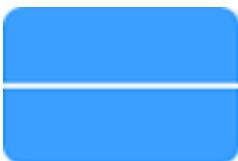


5-2 Split Screen Layout Overview

Monitor screens can be split into 2 - 6 grids vertically or horizontally.



Screen split function disabled.
The screen will not be split.



Horizontal Split 2
Displays a grid horizontally dividing the desktop into two halves. This layout allows you to arrange 2 equal sized windows side by side vertically.



Vertical Split 2
Displays a grid vertically dividing the desktop into two halves. This layout allows you to arrange 2 equal sized windows side by side horizontally.



Vertical Equal Split 3
Displays a grid vertically dividing the desktop into 3 screens of equal size allowing you to assign a different window for each screen.



Split 3 (Main at Right)
Displays three split screens on the desktop, one on the right and two smaller equal-size screens on the left.



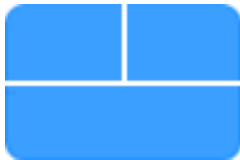
Split 3 (Main at Left)

Displays a grid dividing the desktop into 3 screens with the larger screen on the left and the other 2 smaller screens (equal size) side by side horizontally.



Split 3 (Main at Top)

Displays a grid dividing the desktop into 3 screens with the larger screen at the top and the other 2 smaller screens (equal size) side by side vertically.



Split 3 (Main at Bottom)

Displays a grid dividing the desktop into 3 screens with the larger screen at the bottom and the other 2 smaller screens (equal size) side by side vertically.



Equal Split 4

Displays a grid dividing the desktop into 4 screens of equal size allowing you to assign a different window for each screen.



Equal Split 6

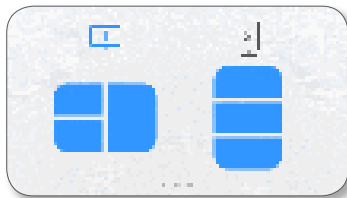
Displays a grid dividing the desktop into 6 screens of equal size allowing you to assign a different window for each screen.

6

Window Layout on Split Screen

You can directly place the desired split screen by using the mouse after splitting the screen. When you press the Ctrl key while moving the window, the **Quick Split** function is temporarily enabled or disabled. If **Quick Split** is turned off, you can temporarily activate or deactivate the feature by pressing the Ctrl key while moving a window.

- 1 If you drag the title bar on the application screen while holding down the left mouse button, the **Quick Split** layout appears in the top center of the monitor.



- 2 Move the window to the desired location to configure the split screen.




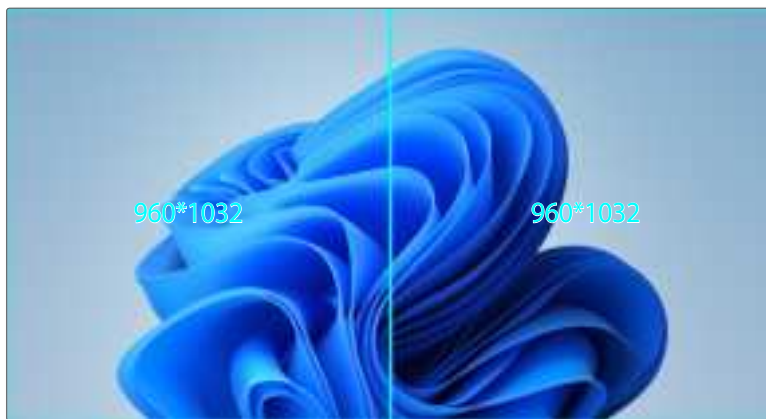
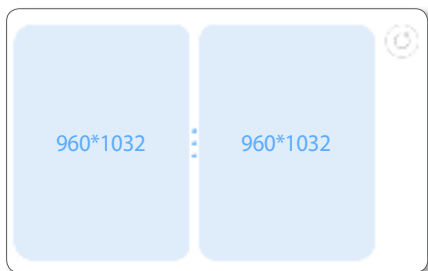
- 3 Release the mouse button and the window will be placed in the split screen grid accordingly.

7

Adjusting Split Screen Grid

The split screen grids can be adjusted with a mouse. See the procedure below to adjust the split screen grids.

- 1 Open **Easy Setting Box**.
- 2 From the monitors under **Split Screen**, select the monitor for which to adjust the split screen grid.
- 3 While holding down with the left mouse button on  between the split screens, adjust the divider position. The resolutions of the split screens appear.




- 4 Stop the mouse pointer and release the left-mouse button to adjust the split screen grid.

8

Initializing Split Screen Grid

The split screen grids can be initialized to the default size.

- 1 Open the **Easy Setting Box** window.
- 2 From the monitors under **Split Screen**, select the monitor for which you want to reset the split screen grid to the default size.
- 3 Click .

9

Adjusting the Taskbar Brightness

Automatically adjusts the taskbar brightness by recognizing the taskbar position and size, to prevent issues that may occur on the monitor screen.

- 1 Open the **Easy Setting Box** window.
- 2 Switch the toggle button on for the **Adjust Taskbar Brightness** or **Adjust Dock and Status Bar Brightness** feature.

- Windows

Adjust Taskbar Brightness

To prevent on-screen problems, the mouse position is detected and the taskbar brightness is lowered automatically.



- macOS

Adjust Dock and Status Bar Brightness



SAMSUNG