



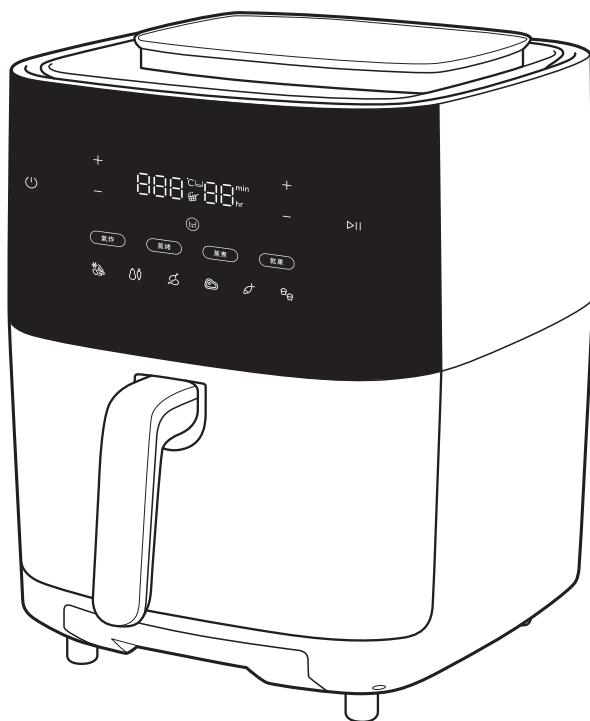
Electrolux

Instruction Book

UltimateTaste700

Air Fryer

E7AF1-710P



EN INSTRUCTION BOOK

CHT 使用手冊

WE'RE THINKING OF YOU

Thank you for purchasing an Electrolux appliance. You've chosen a product that brings with it decades of professional experience and innovation. Ingenious and stylish, it has been designed with you in mind. So whenever you use it, you can be safe in the knowledge that you'll get great results every time.

Welcome to Electrolux.

Visit our website to:



Get usage advice, brochures, trouble shooter, service information: www.electrolux.com



Register your product for better service:
www.electrolux.com.tw/electrolux-member/#/



Buy accessories and consumables for your appliance:
www.electrolux.com.tw/appliances/accessories/#/

CUSTOMER CARE AND SERVICE

When contacting the service center, ensure that you have following data available. The information can be found on the rating plate.

Reference:

▼ 掃描QR碼以註冊
www.electrolux.com

QR Code

15 x 15 mm



Electrolux

型號: E7AF1-710P
 品名: 氣炸鍋
 PNC: 900 943 364
 類別: ST-008
 額定電壓及頻率: 110V~60Hz
 額定消耗功率: 1500W
 製造年份: YYYY

Serial No.: YWW00000

進口商/委製商: 新加坡商伊萊克斯股份有限公司台灣分公司
 地址: 台北市松山區敦化南路一段3號4樓
 電話: 0800-888-259
 Electrolux 集團監製 中國製造



R33428
RoHS

新加坡商伊萊克斯股份有限公司 台灣分公司
 105408 台北市松山區敦化南路一段3號4樓
 免付費客服專線: 0800-888-259
 電郵: service@electrolux.com.tw

Safety Advice

EN

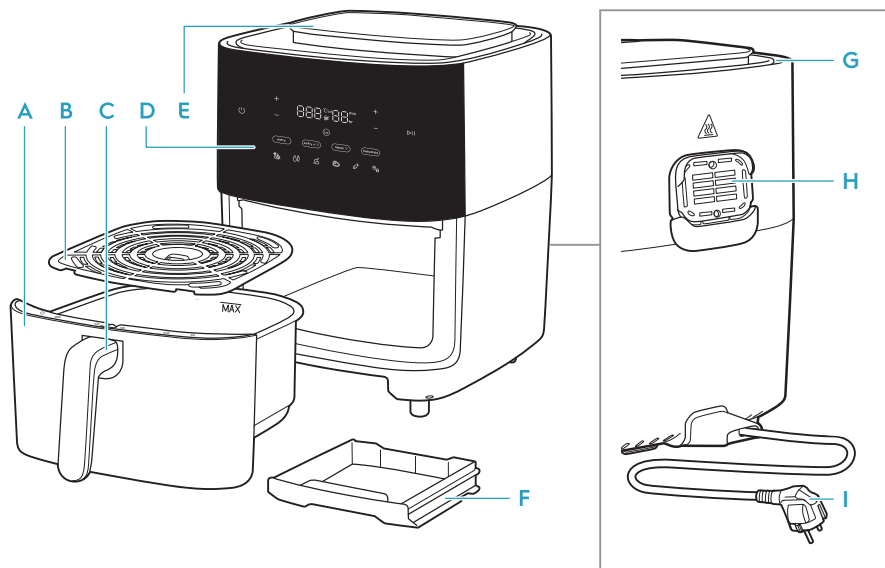
CHT

- This appliance can be used by children aged from 8 years and above and persons with reduced physical, sensory or mental capabilities or lack of experience and knowledge if they are supervised or have received instruction concerning how to safely use the appliance and understand the hazards involved. Children shall not play with the appliance. Cleaning and user maintenance shall not be performed by children without supervision.
- This appliance is not intended for use by persons (including children) with reduced physical, sensory or mental capabilities or lack of experience and knowledge, unless they have been given supervision or instruction concerning use of the appliance in a safe way and understand the hazards involved by a person responsible for their safety. Children should be supervised to ensure that they don't not play with the appliance.
- Please keep the air fryer and the power cord out of the reach of children less than 8 years.
- This appliance is intended for normal household use only.
- If the power cord is damaged or broken, it must be replaced by a service agent or similarly qualified persons to avoid safety hazards.
- The accessible surfaces may become hot during use.
- Do not cover the air inlet and the air outlet openings while the appliance is operating.
- Always return the appliance to an authorized service center for examination or repair. Do not attempt to repair the appliance yourself.
- Do not place the appliance on or near a hot gas stove, any kind of electric stove, electric cooking plates or in a heated oven.
- Always make sure that the plug is inserted into the socket properly.
- Keep the mains cord away from hot surfaces or sharp objects to avoid damage. Never put anything flammable, explosive or corrosive in the basket.
- Do not excessively pinch, bend, twist or place heavy objects on the power cord to prevent from exposing or breaking its core.
- Do not use the appliance if the plug, the main cord or the appliance itself is damaged. Never start cooking without the basket being in place.
- Do not fill up the basket above the "MAX" line in order to prevent food contact with the heating element. Do not touch the basket directly with your hands during or right after use to avoid getting scalded.
- Do not use any plastic utensils or normal paper wrapping materials to wrap food for cooking.
- Do not insert pins, wires or other objects into any of the openings of the air fryer to avoid an electrical shock or injury.
- Please be sure to unplug the air fryer before cleaning or repairing it. Do not move or shake the air fryer during use.
- Do not insert any foreign objects into the safety switch to avoid any danger.

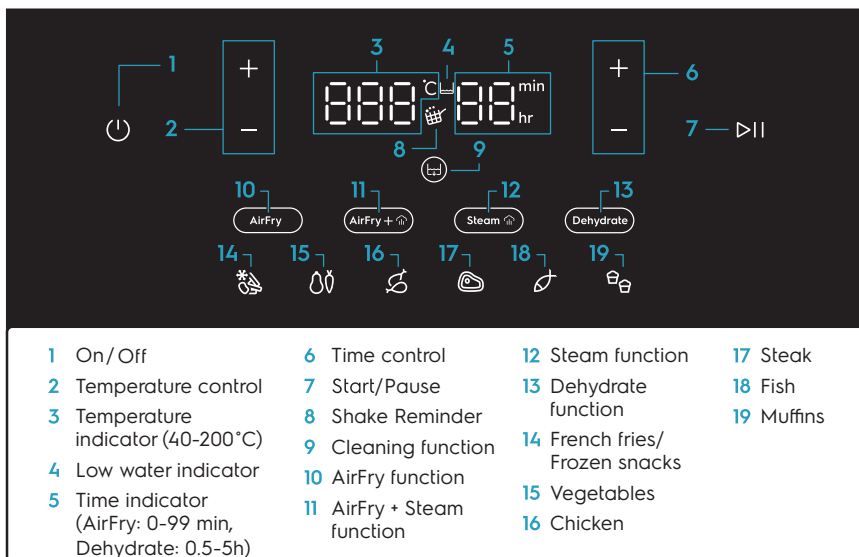
CAUTION: Hot surfaces.

- Not suitable to contact with high acidic and/or high salty ingredients.
- Avoid to use metallic tools when picking the food in the basket.
- Use purified/distilled water only.
- This appliance must not be supplied through an external switching device, such as a timer, or connected to a circuit that is regularly switched on and off by the utility.

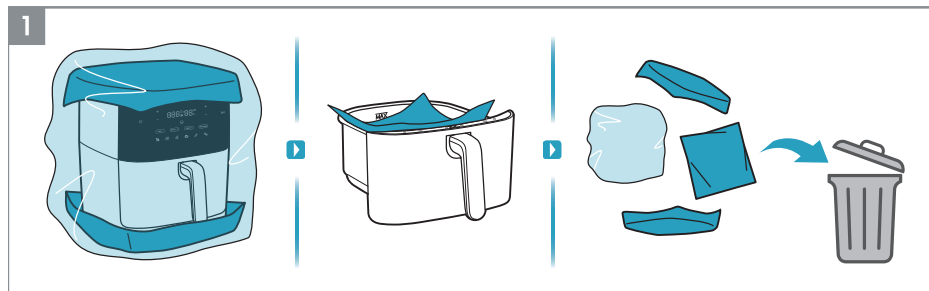
General Overview



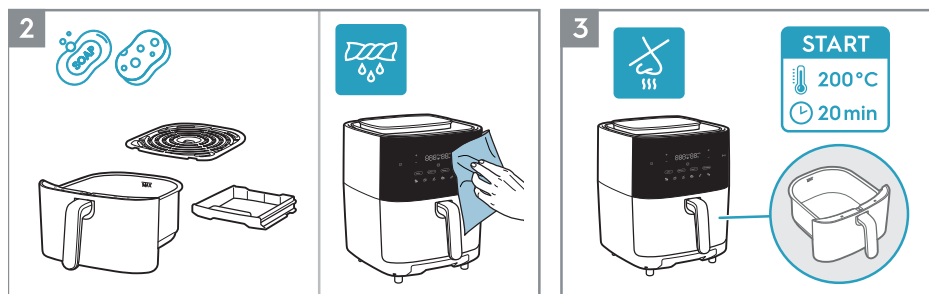
- | | | | |
|-----------------|-----------------|------------------------|--------------|
| A Pan | D Control panel | F Water tray collector | H Air outlet |
| B Grid | E Water tank | G Air inlet | I Main cord |
| C Basket handle | | | |



Before first use

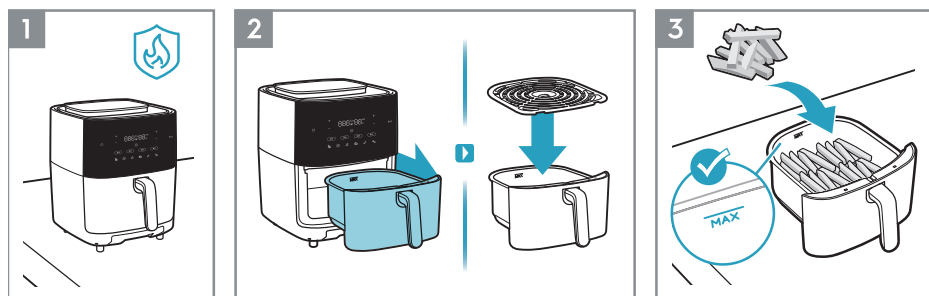


1. Remove all the packaging and protective material.

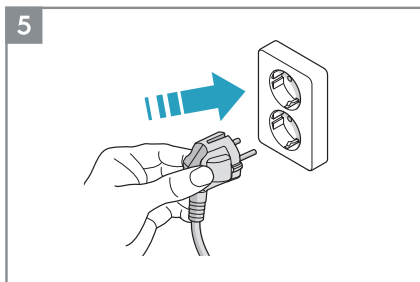
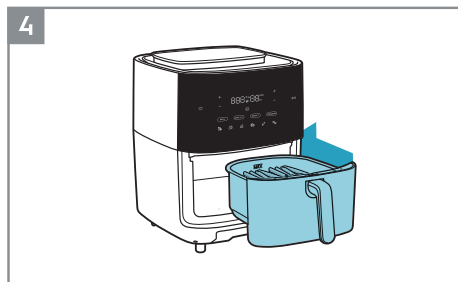


2. Clean the pan, grid and water tray collector with warm water and dish soap. Wipe inside and outside of the appliance with a soft cloth.
3. It is normal for a new unit to emit odors the first few times when it is operated. Run the empty air fryer at 200°C for 20 minutes before first use to avoid that.

How to use - AirFry function

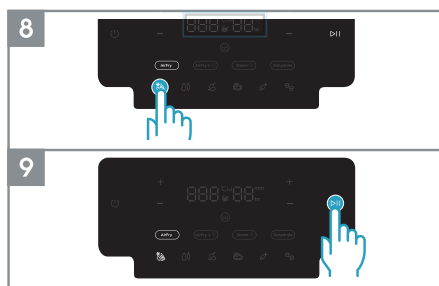
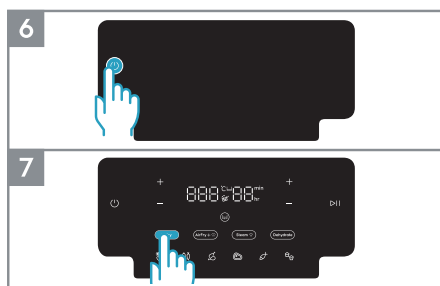


1. Place the appliance on a flat, stable and heat-resistant surface.
2. Pull out the pan and place it on a stable surface. Insert the grid into the basket.
3. Put the food in the basket, observing the "MAX." capacity indication.



4. Push the pan with food completely back into the appliance.

5. Plug in the appliance.

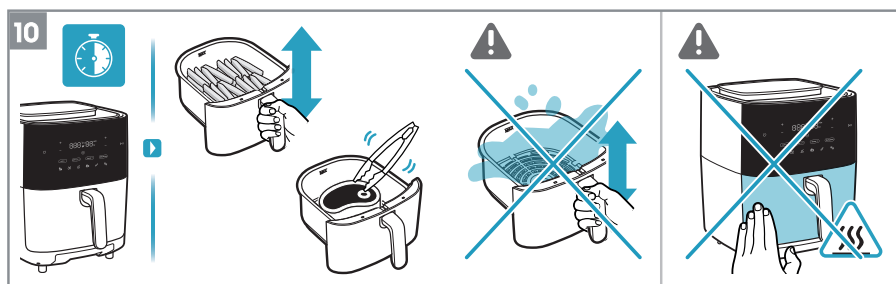


6. Press the On/Off button.

7. Select the desired cooking method. For example, Air Fry function.

8. Adjust the time and temperature to your taste or select one of the pre-set recipes. For example, French Fries.

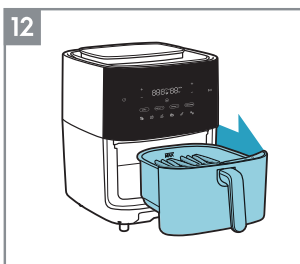
9. Press the Start/Pause button.



10. Depending on the type of ingredient, flip the food mid-cooking or every 7 minutes by using a heat-resistant tool or by just carefully shaking the food inside the basket. (see Cooking Guide).

⚠ CAUTION: Be careful with hot surfaces when the appliance is in use.

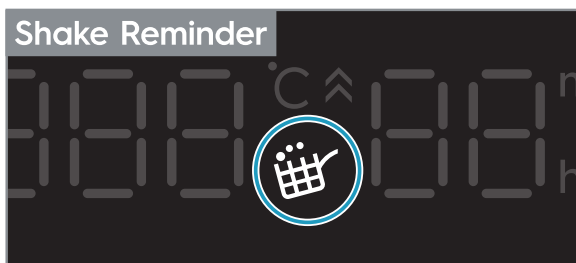
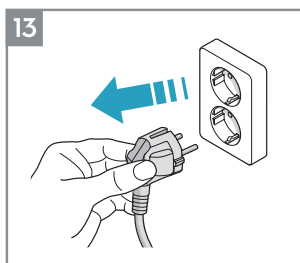
⚠ CAUTION: Avoid to use metallic tools when picking the food in the basket, in order to protect the non-stick coating.



11. At the end of the cooking time, the appliance will issue a beep signal.

12. Carefully remove the pan and place it on a heat-resistant surface.

⚠ CAUTION: Hot steam can come out of the basket when it is opened mid or at the end of cooking. Make sure your face, arms and hands are away from the steam when opening it.



13. Unplug the appliance after using it.

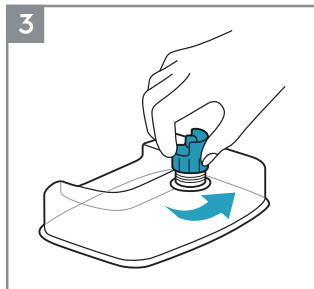
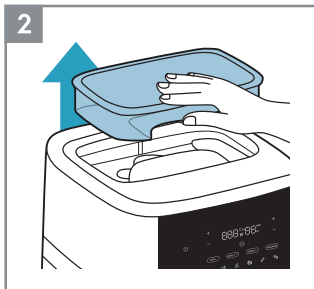
Shake Reminder

The "Shake Reminder" is activated during the pre-sets of some recipes, such as French Fries/Frozen Snacks, Vegetables and Chicken.

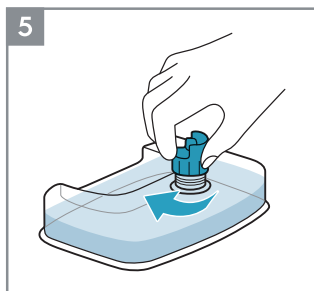
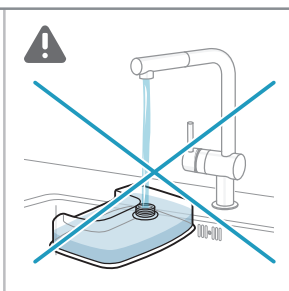
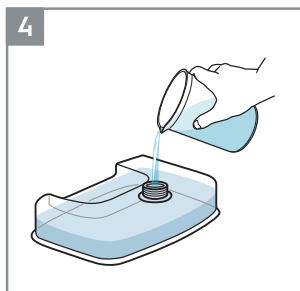
When it is time to shake or flip your food, the "Shake Reminder" icon will light up and blink for one minute, while a beep sound will repeat for three times.

The "Shake Reminder" is not mandatory, hence the cooking will continue as usual even if the food is not flipped or shaken.

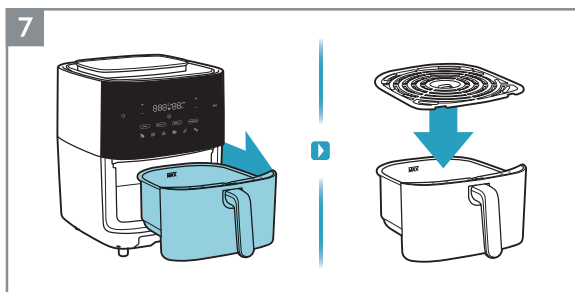
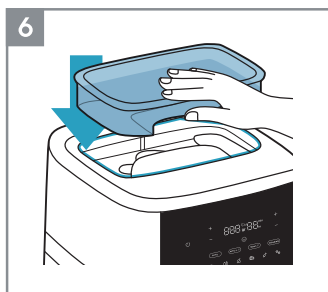
How to use – Steam function



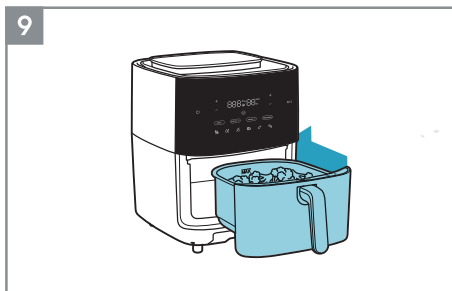
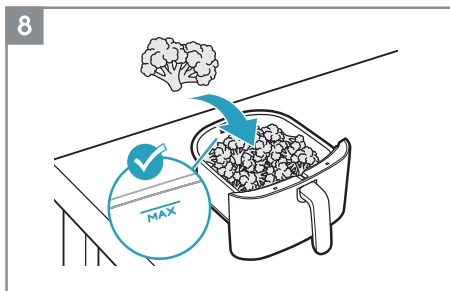
1. Place the appliance on a flat, stable and heat-resistant surface.
2. Remove the water tank by lifting it from the air fryer.
3. Unscrew the water tank cap.



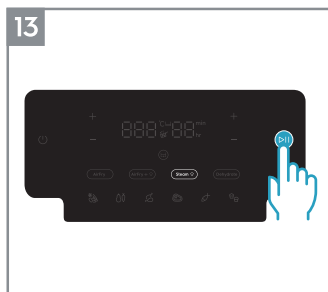
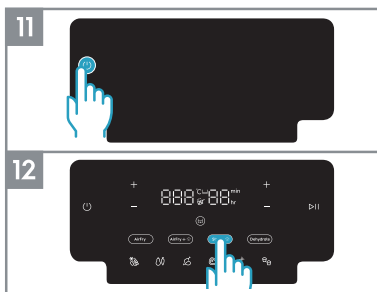
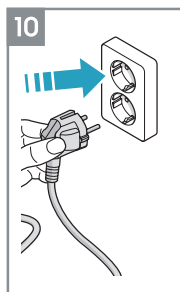
4. Fill up the water tank with purified/distilled water.
- ⚠ **CAUTION:** In order to minimize scale buildup and maintain correct operating function, especially in areas with hard water, do not use water directly from the tap.
- ⚠ **CAUTION:** Please fill in fresh purified/distilled water every time when you use the product.
5. Fasten the water tank cap.



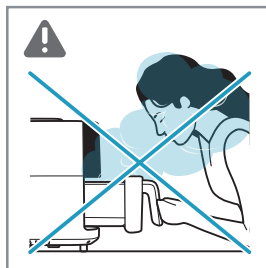
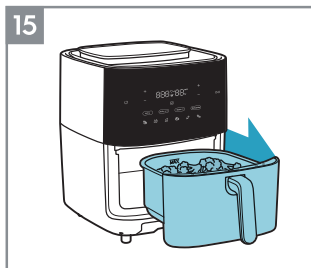
6. Place the water tank back on the air fryer.
7. Pull out the pan and place it on a stable surface. Insert the grid into the basket.



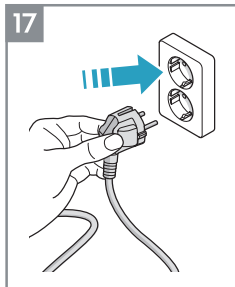
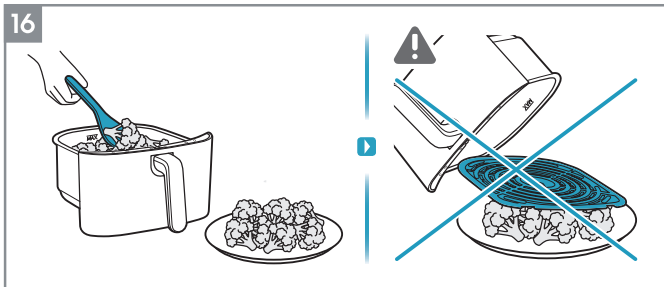
8. Put the food in the basket, observing the "MAX." capacity indication.
9. Push the pan with food completely back into the appliance.



10. Plug in the appliance.
11. Press the On/Off button.
12. Select the Steam function.
13. Press the Start/Pause button.



14. At the end of the cooking time, the appliance will issue a beep signal.
 15. Carefully remove the pan and place it on a heat-resistant surface.
- ⚠ CAUTION:** Hot steam can come out of the basket when it is opened mid or at the end of cooking. Make sure your face, arms and hands are away from the steam when opening it.

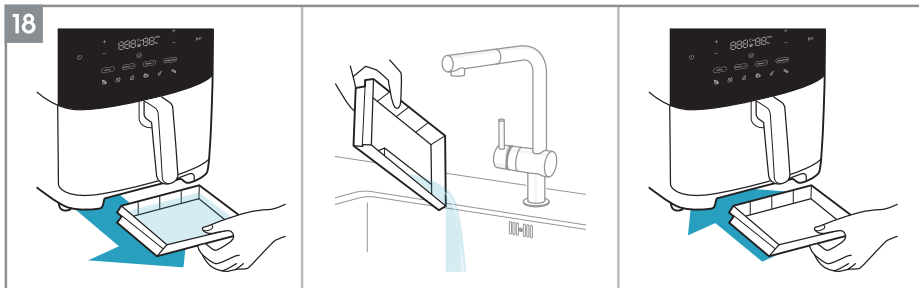


16. Serve the food by using tongs or a similar kitchen utensil.

⚠ **CAUTION:** Do not serve food by flipping the pan directly onto the plate, as the hot grid or liquids may fall into the plate.

⚠ **CAUTION:** Avoid to use metallic tools when picking the food in the basket, in order to protect the non-stick coating.




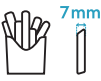










17. Unplug the appliance after using it.



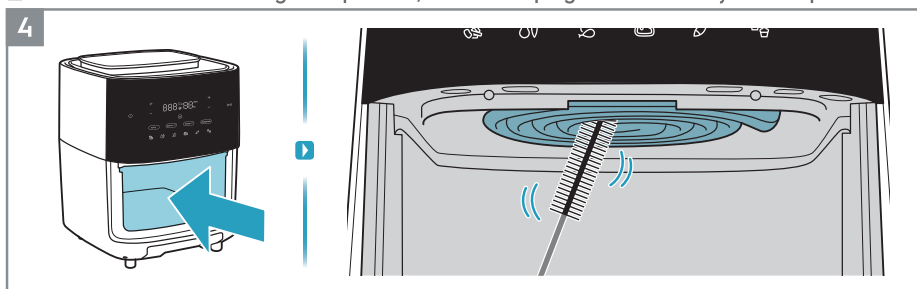
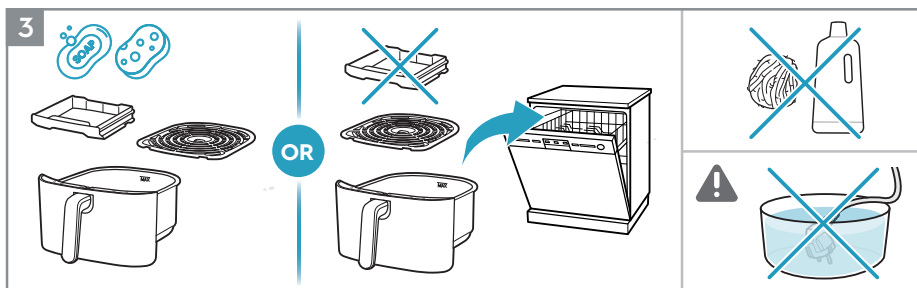
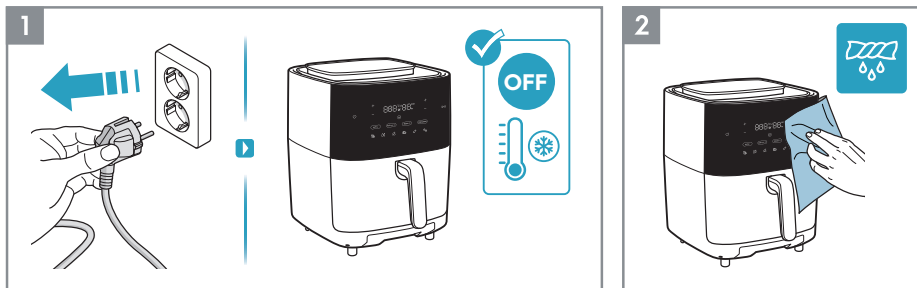
18. Check the water collecting tray for any water build up. Dispose the excess water and place the water collecting tray back into the appliance.

Cooking Guide

EN
CHT

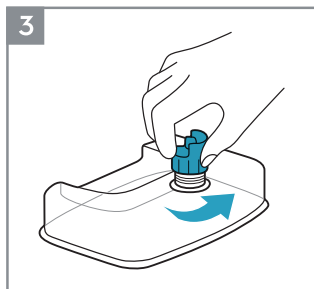
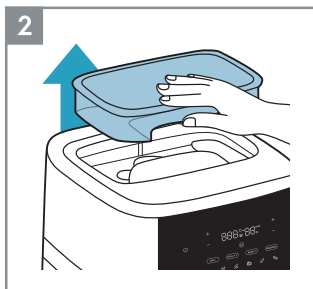
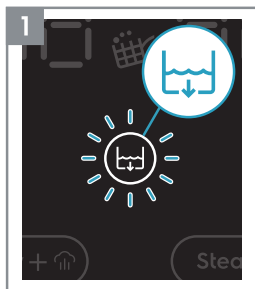
						 Oil
	300-800g	15-30 min	180°C			
	300-800g	20-30 min	180°C			
	100-500g	10-20 min	170°C			
	100-400g	10 min	200°C			
	100-200g	10 min	200°C			
	100-500g	10-30 min	180°C			
	100-500g	13-20 min	180°C			
 Max 1.2kg	800-1200g	45-60 min	180°C			
	100-500g	10-15 min	140°C			
	100-500g	10 min	180°C			
	25-50g each	10 min	170°C			

Cleaning

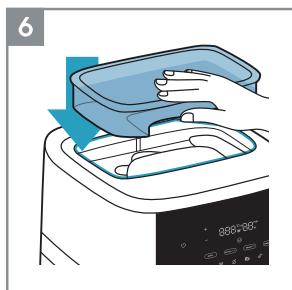
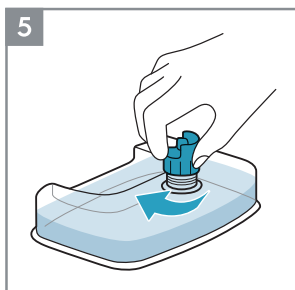
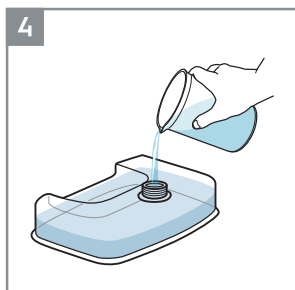


Cleaning - Steam function

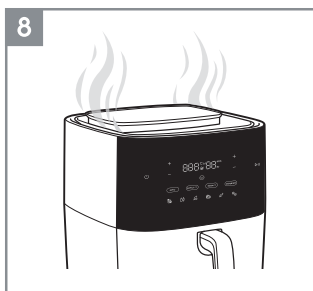
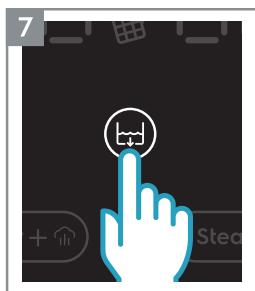
EN
CHT



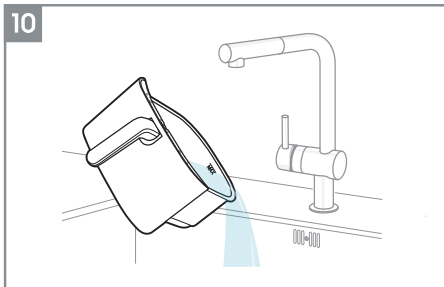
1. Run a cleaning cycle with the "Clean function" when the icon lights up on the display or whenever cleaning is needed.
2. Remove the water tank by lifting it from the air fryer.
3. Unscrew the water tank cap.



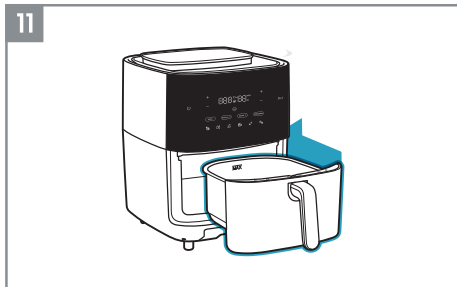
4. Fill up the water tank with purified/distiller water.
5. Fasten the water tank cap.
6. Place the water tank back on the air fryer.



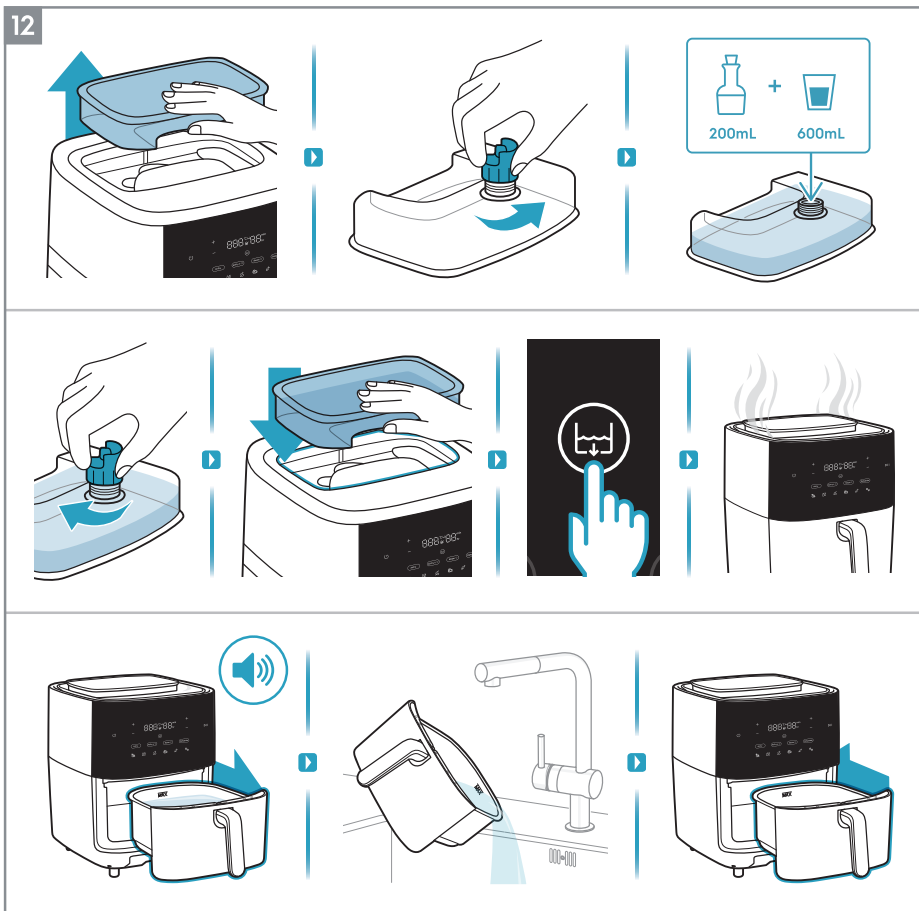
7. Press the "Clean Function" button.
8. Wait until the steaming cycle is done.
9. At the end of the steaming cycle, the appliance will issue a beep signal. Carefully remove the pan.



10. Discard the excess water from the pan.

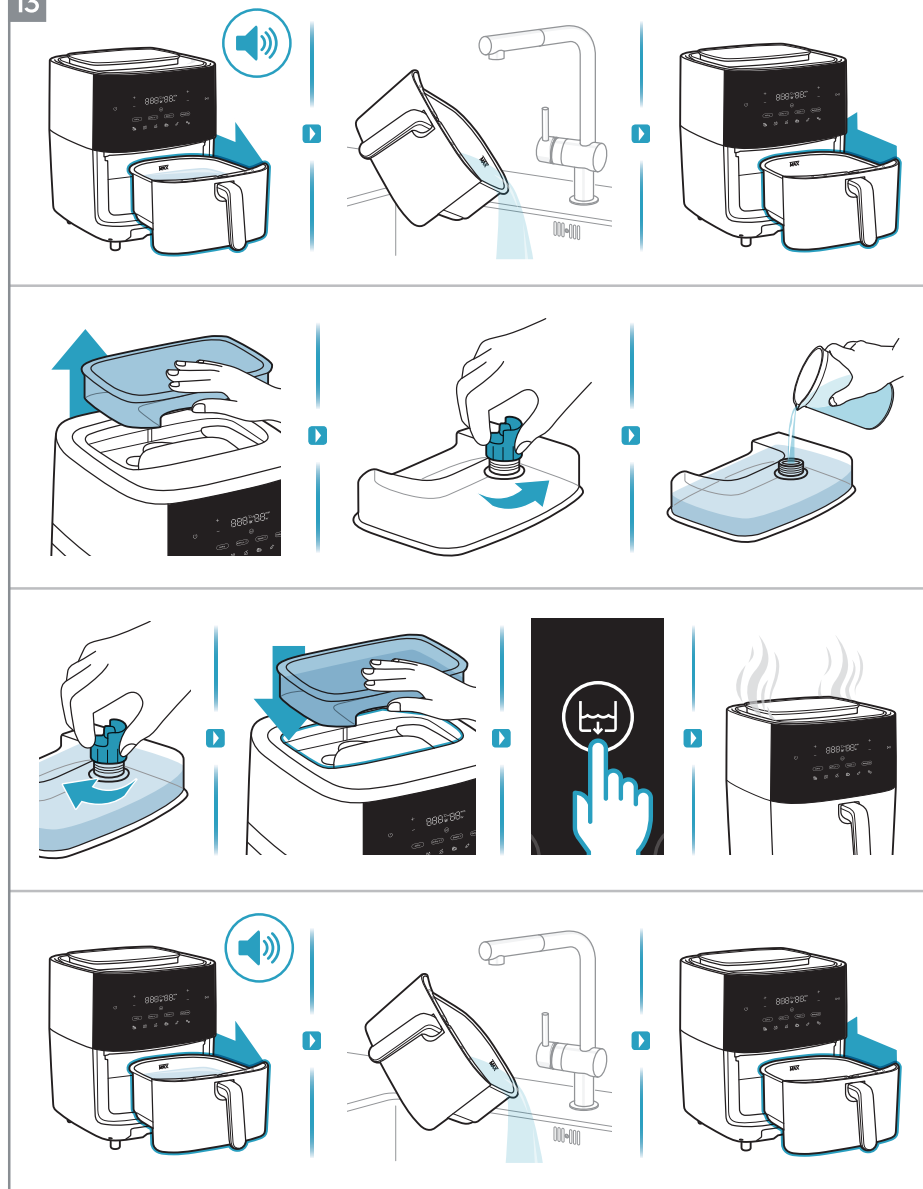


11. Push the pan completely back into the appliance.



12. Repeat the same previous steps (2-11), this time using a mixture of 600ml purified water and 200ml vinegar.

13



13. Finally, repeat the same previous steps (2-11), again using purified water only.

What to do if...

Problem	Check if...
You cannot activate or operate the appliance.	<ul style="list-style-type: none"> • The appliance is correctly connected to an electrical supply. • The basket and pan are in the correct position. Ensure they are completely pushed into the appliance to enable the electrical supply. • The cooking time is set.
You cannot slide the pan into the appliance.	<ul style="list-style-type: none"> • The basket is filled over its maximum capacity. • The basket is placed correctly. It has to click when you place it in the pan. • There's an object under the pan that is an obstacle to close it properly.
White smoke comes out of the appliance.	<ul style="list-style-type: none"> • The food you prepare is too greasy. • The pan and the basket are clean.
The display shows E1	<ul style="list-style-type: none"> • The temperature sensor is cutting out or disconnecting.
The display shows E2	<ul style="list-style-type: none"> • The temperature sensor has short-circuited.

* In case the display shows E1 or E2 error, the appliance must be repaired by a Service Center.

Disposal



This symbol on the product or on its packaging indicates that the product may not be treated as household waste. To recycle your product, please take it to an official collection point or to an Electrolux service center that can remove and recycle the battery and electric parts in a safe and professional way. Follow your country's rules for the separate collection of electrical products and rechargeable batteries.

Electrolux reserves the right to change products, information and specifications without notice.

我們想您所想

感謝您購買伊萊克斯電器。您選擇了一款集數十年專業經驗和創新為一身的產品。它製作精巧，外觀時尚，細節設計無不為您著想。無論您何時使用，都可以完全放心，它將成為您生活中的出色助手。

歡迎使用伊萊克斯產品。

請訪問我們的網站：



獲得使用建議、產品手冊、排故方法、服務資訊：
www.electrolux.com



注册您的產品，獲得更完善的服務：
www.electrolux.com.tw/electrolux-member/#/



為您的電器購買配件和耗材：
www.electrolux.com.tw/appliances/accessories/#/

客戶關愛與服務

當您聯絡服務中心時，請確保您已準備好以下資訊。
產品型號、PNC和序列號，這些資訊均可在商品銘牌上找到。

參考樣式：

▼ 掃描QR碼以註冊		www.electrolux.com	
QR Code 15 x 15 mm		Electrolux	
	型號: E7AF1-710P		
	品名: 氣炸鍋		
	PNC: 900 943 364		
	類別: ST-008		
	額定電壓及頻率: 110V~60Hz		
	額定消耗功率: 1500W		
	製造年份: YYYY		
Serial No.: YWW00000			
進口商/委製商: 新加坡商伊萊克斯股份有限公司台灣分公司			
地址: 台北市松山區敦化南路一段3號4樓			
電話: 0800-888-259			
Electrolux 集團監製 中國製造			
		 R33428 RoHS	

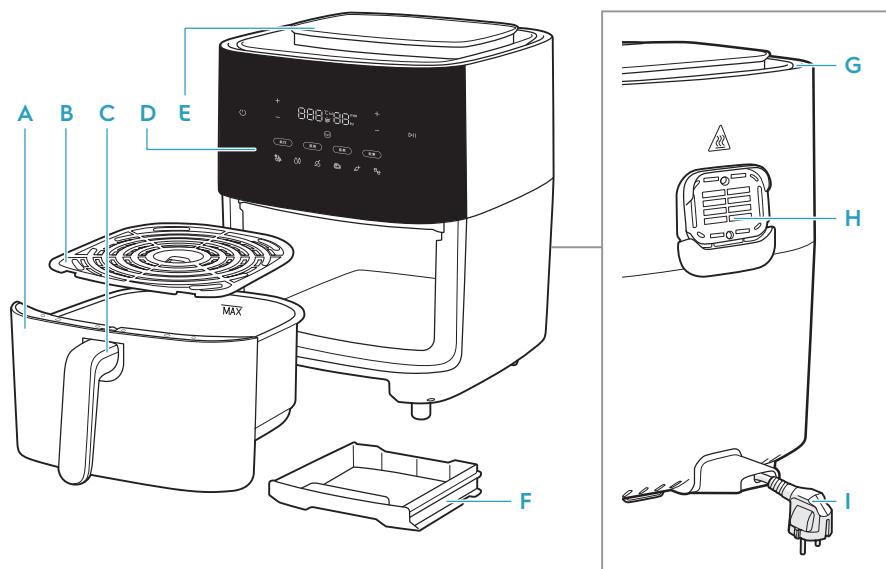
安全建議

- 8歲及以上的兒童以及身體、感官或智力存在缺陷或缺乏經驗和知識的人士如需使用本電器，應得到監督，或接受有關如何安全使用本電器並瞭解其危害的相關指導。兒童不得將此電器當作玩具。在沒有監督的情況下，兒童不得進行清潔和維護。
- 本電器不適用於身體、感官或智力低下或缺乏經驗和知識的人士（包括兒童）使用，除非他們得到監督或指導，能夠以安全的方式使用該電器，並瞭解負責其安全的人員所涉及的危險。兒童應受到監督，以確保他們不會將此電器當作玩具。
- 請將空氣炸鍋和電源線放在8歲以下兒童接觸不到的地方。
- 此電器僅供普通家庭使用。請勿於戶外使用。
- 如果電源線損壞或斷裂，必須由服務代理商或其他具有資格的人員更換，以避免安全隱患。
- 可接觸的表面在使用過程中可能會變熱。
- 當電器運行時，不要蓋住進氣口和出氣口。
- 始終將電器送至授權的服務中心檢查或維修。請勿試圖自己修理電器。
- 請勿將電器放在熱煤氣爐、任何類型的電爐、電烹飪板上，或加熱的烤箱或附近。
- 始終確保插頭正確插入插座。
- 保持電源線遠離熱表面或尖銳物體，以免損壞。切勿將易燃、易爆或腐蝕性物品放入炸籃。
- 請勿過度擠壓、彎曲、扭曲電源線或在電源線上壓放重物，以免使芯線裸露或折斷。
- 如果插頭、電源線或電器本身已損壞，請勿使用電器。炸籃放好之前，請勿開始烹飪。
- 為了防止食物接觸加熱元件，請勿讓炸籃中的食物高度超過“MAX”指示線。在使用過程中或使用後請勿直接用手觸摸炸籃，以免燙傷。
- 請勿使用任何塑料器皿或普通的紙質材料來包裹烹飪食物。
- 請勿將針腳、電線或其他物體插入空氣炸鍋的任何開口處，以免觸電或造成傷害。
- 在清洗或修理空氣炸鍋前，請務必拔掉插頭。使用過程中請勿移動或搖晃空氣炸鍋。
- 請勿將異物插入安全開關內，以免發生危險。

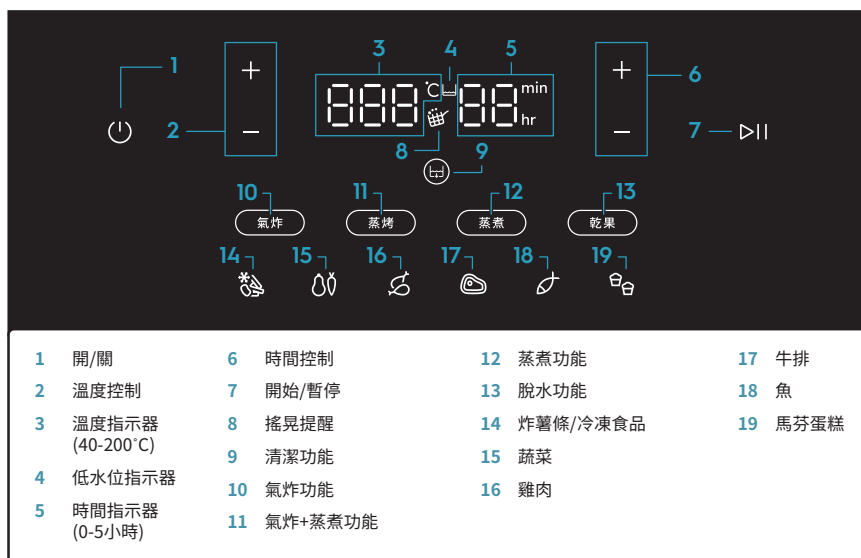
警告：高溫表面。

- 氣炸鍋炸籃不適合接觸含有高鹽份或高酸性食材。
- 夾取食材時，請避免使用金屬製器具接觸氣炸鍋炸籃。
- 請使用純淨水。
- 此電器不能連接至外部計時器開關。

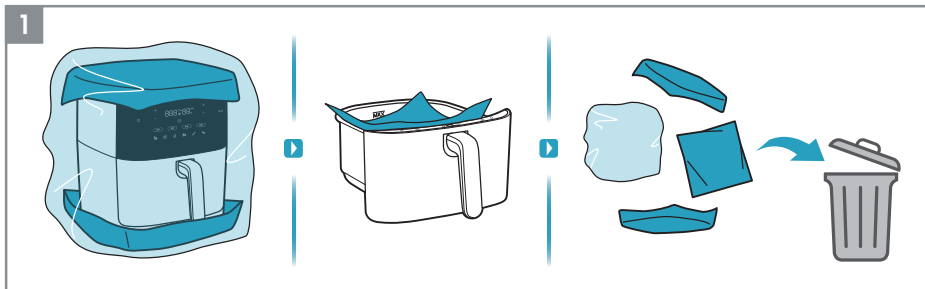
外觀概覽



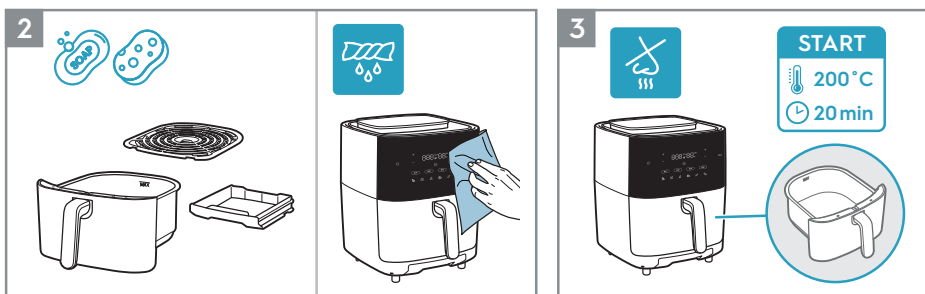
- | | | | |
|--------|--------|-------|-------|
| A 煎鍋 | D 控制面板 | F 集水盤 | H 出氣口 |
| B 隔油網 | E 水箱 | G 進氣口 | I 電源線 |
| C 炸籃手柄 | | | |



首次使用前



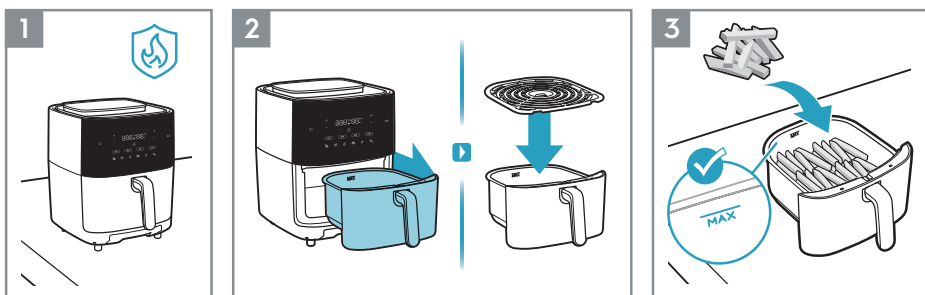
1. 拆除所有包裝和防護材料。



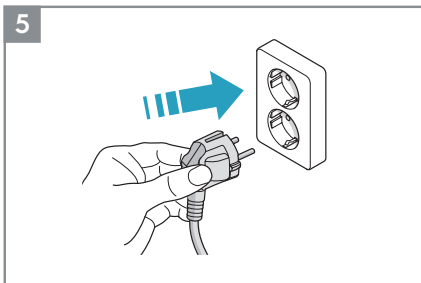
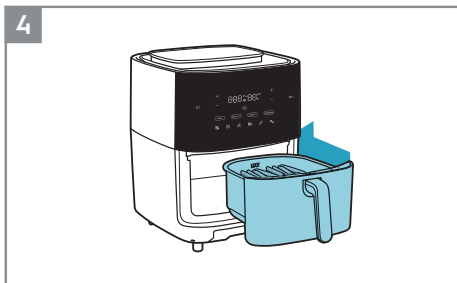
2. 用溫水和洗潔精洗煎鍋、隔油網和集水盤。使用軟布擦拭機器內外。

3. 新產品在最初幾次使用時發出異味是正常現象。
首次使用前，讓空氣炸鍋在200°C下空載運行20分鐘，以避免這種情況。

使用方法 - 氣炸功能

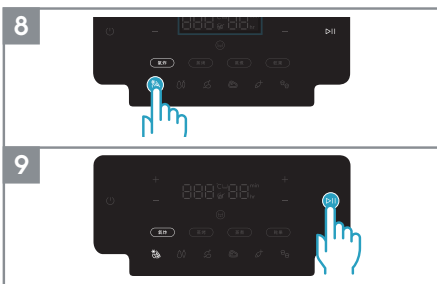
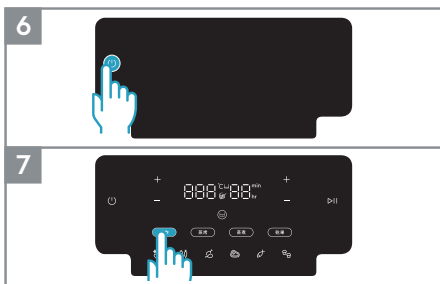


1. 將電器放在平坦、穩固、耐熱的表面上。
2. 拿出煎鍋，放在穩固的表面上。將隔油網插入炸籃。
3. 在炸籃裏放入食物，同時留意“MAX”最大容量指示線。



4. 將裝有食物的煎鍋完全推入電器。

5. 將電器插頭插入電源插座。

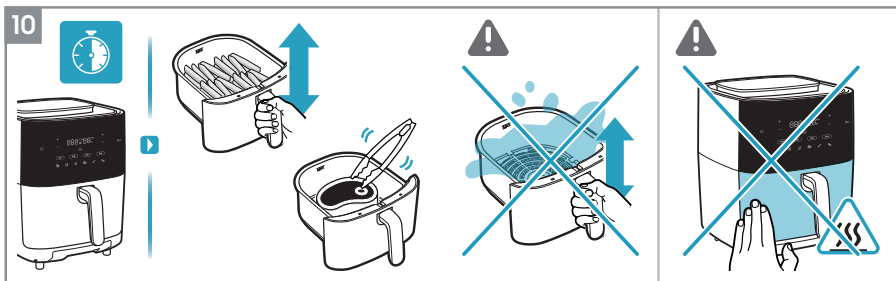


6. 按下“開/關”鍵。

7. 選擇烹飪方式。例如氣炸功能。

8. 根據您的口味調整時間和溫度，或選擇一種預先設置的菜單。例如炸薯條。

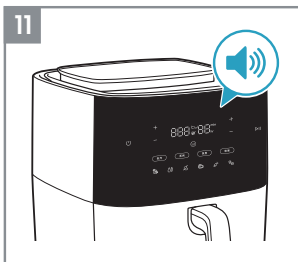
9. 按下“開始/暫停”鍵。



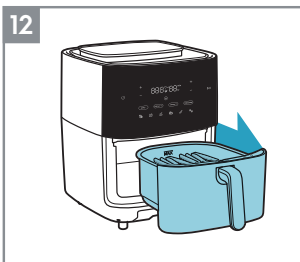
10. 根據配料的類型，在烹飪中途或每7分鐘用耐熱工具翻轉一次食物，或者小心地輕微搖晃炸籃裏的食物。（參見烹飪指南）

▲ 警告：電器運轉過程中，表面溫度較高，請小心使用。

▲ 注意：請勿用金屬工具拿取炸籃中的食物，以免損傷防粘塗層。



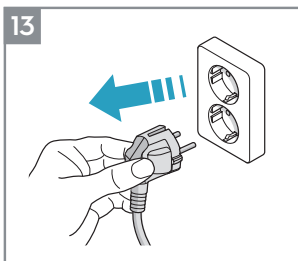
11. 烹飪計時結束後，電器會發出蜂鳴聲。



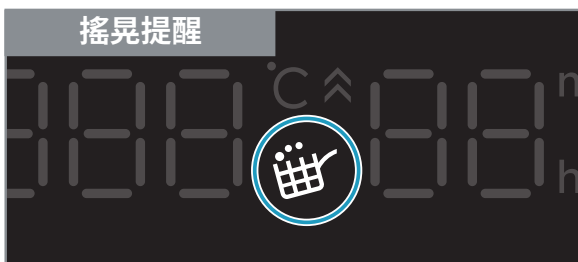
12. 小心地取出煎鍋，放置在耐熱平面上。



▲ 警告：在烹飪中途或結束後打開炸籃，會冒出灼熱蒸汽。請在打開時，確保您的面部、手臂和雙手遠離蒸汽。



13. 使用過後，拔出電源插頭。



搖晃提醒

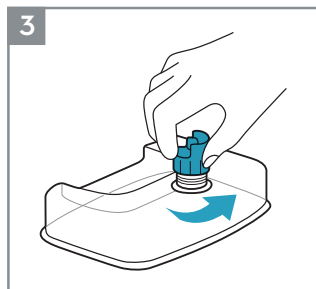
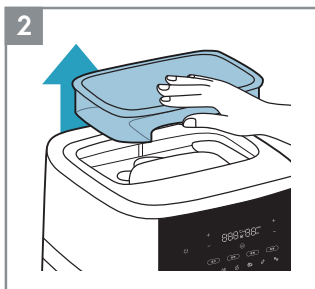
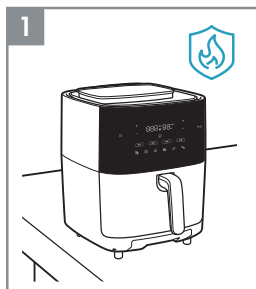
“搖晃提醒”會在一些食譜的預設中啟動，例如炸薯條/冷凍食品、蔬菜和雞肉。

當需要搖晃或翻轉食物時，“搖晃提醒”圖標會點亮並閃爍一分鐘，同時發出三次蜂鳴聲。

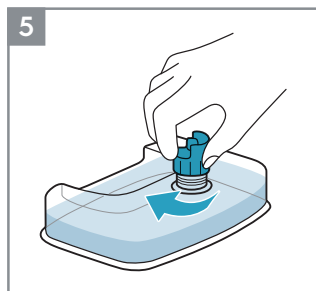
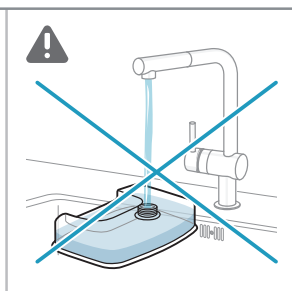
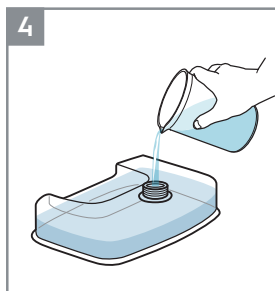
“搖晃提醒”不是强制性的，因此即使沒有翻轉或搖晃食物，烹飪也會照常進行。

使用方法 - 蒸煮功能

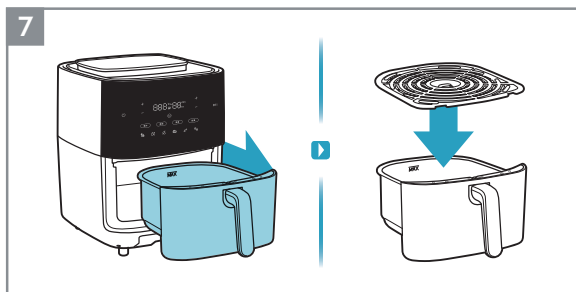
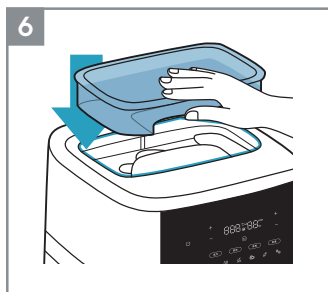
EN
CHT



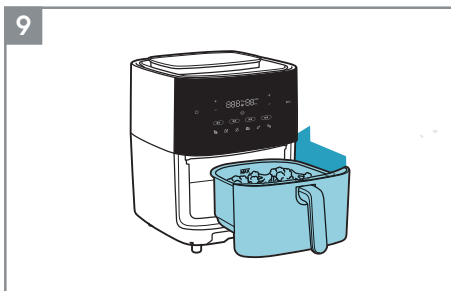
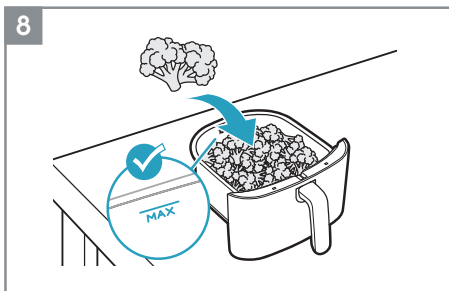
1. 將電器放在平坦、穩固、耐熱的表面上。
2. 從空氣炸鍋上方提起水箱，將其取出。
3. 擰開水箱蓋。



4. 在水箱中裝滿純淨水/蒸餾水。
 - ▲ 注意：爲了最大限度地減少水垢的聚積，並保持所有功能正常運作，請勿直接使用自來水（尤其是在水質較硬的地區）。
 - ▲ 注意：請在每次使用本產品時注入新鮮的純淨水/蒸餾水。
5. 重新擰緊水箱蓋。

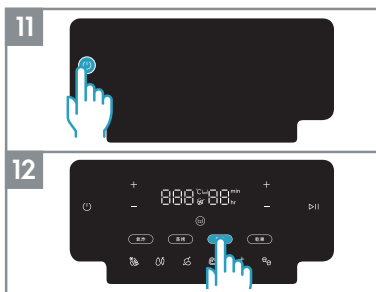
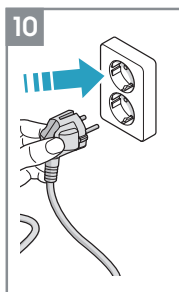


6. 將水箱放回空氣炸鍋。
7. 拿出煎鍋，放在穩固的表面上。將隔油網插入炸籃。



8. 在炸籃裏放入食物，同時觀察“MAX”最大容量指示線。

9. 將裝有食物的煎鍋完全推入電器。

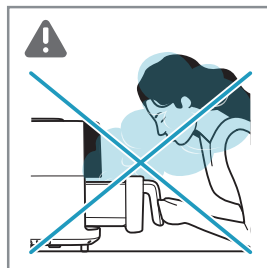
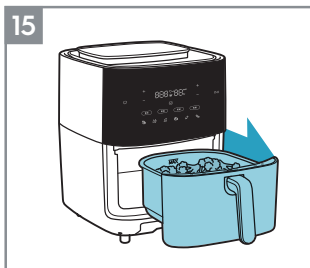
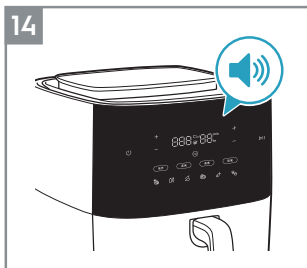


10. 將電器插頭插入電源插座。

11. 按下“開/關”鍵。

12. 選擇蒸煮功能。

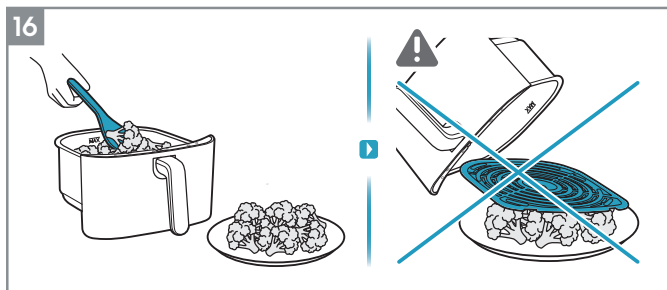
13. 按下“開始/暫停”鍵。



14. 烹飪計時結束後，電器會發出蜂鳴聲。

15. 小心地取出煎鍋，放置在耐熱平面上。

▲ 警告：在烹飪中途或結束後打開炸籃，會冒出灼熱蒸汽。請在打開時，確保您的面部、手臂和雙手遠離蒸汽。

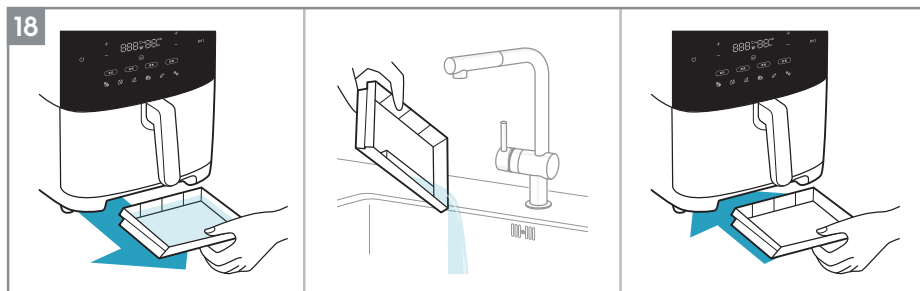
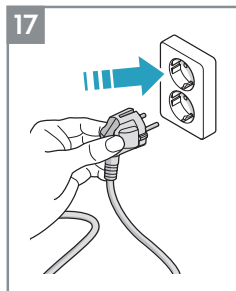


16. 用夾子或其他類似廚房工具盛放食物。

▲ **注意：**請勿將炸籃直接翻轉到盤子上倒出食物，高溫的隔熱網或液體可能會一同被倒入盤子。

▲ **注意：**請勿用金屬工具拿取炸籃中的食物，以免損傷防粘塗層。

17. 使用過後，拔出電源插頭。

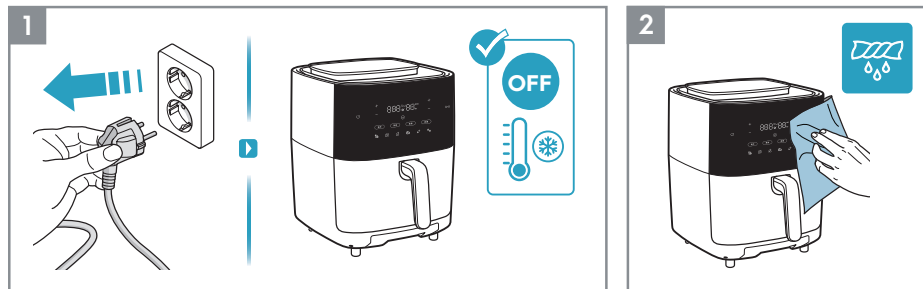


18. 檢查集水盤中是否有積水。清理集水盤，並將其放回原位。

烹飪指南

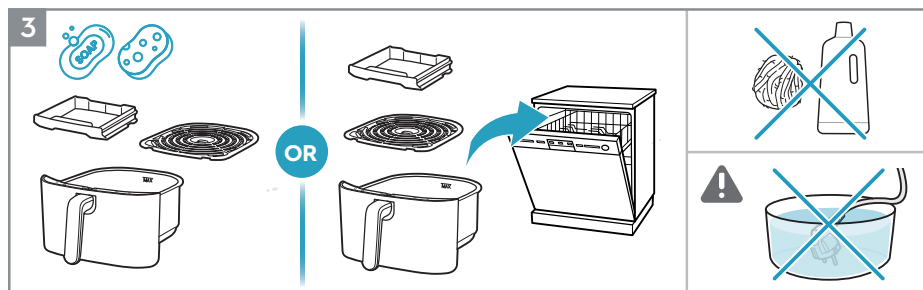
						 油脂
 7毫米/10毫米 300 ~ 800克	15 ~ 30分鐘	180 °C				
 7毫米 300~ 800克	20 ~ 30分鐘	180 °C				
	100~ 500克	10 ~ 20分鐘	170 °C			
	100~ 400克	10分鐘	200 °C			
 	100~ 200克	10分鐘	200 °C			
	100~ 500克	10 ~ 30分鐘	180 °C			
	100~ 500克	13 ~ 20分鐘	180 °C			
 最多 1.2 公斤	800~ 1200克	45 ~ 60分鐘	180 °C			
	100~ 500克	10 ~ 15分鐘	140 °C			
 	100~ 500克	10分鐘	180 °C			
	25~ 50克/個	10分鐘	170 °C			

清潔方法



1. 清潔前，請務必拔下電器插頭並等待設備冷卻。

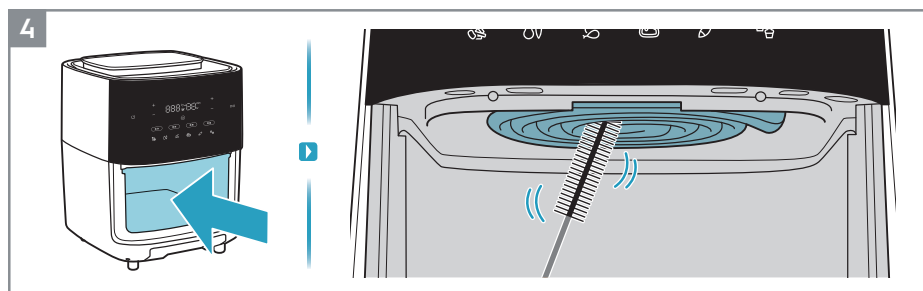
2. 使用軟布擦拭電器表面。



3. 使用溫水和洗潔劑清洗炸籃和煎鍋，或使用洗碗機清洗。

注意：避免使用研磨性清潔產品或金屬工具，以免損傷防粘塗層。

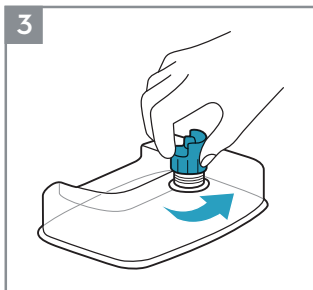
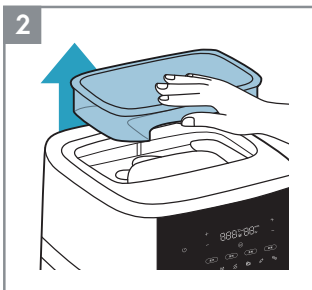
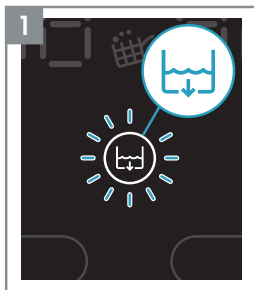
⚠ 警告：切勿將產品、電源線或插頭浸入水或任何其他液體中。



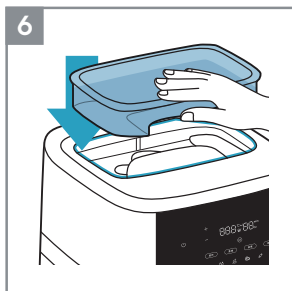
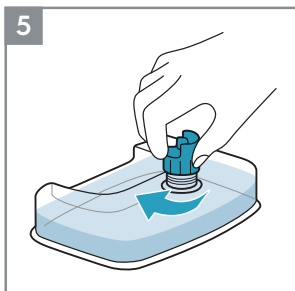
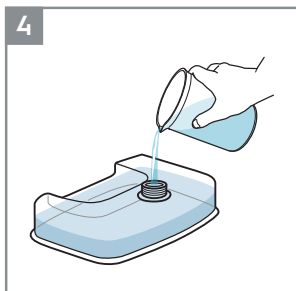
4. 使用清潔刷清潔加熱元件。

注意：在清潔加熱元件前，確保電器已完全冷卻。

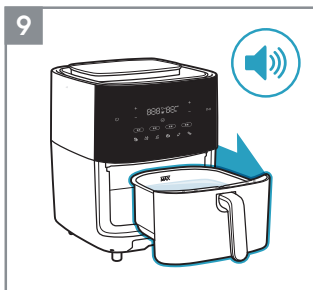
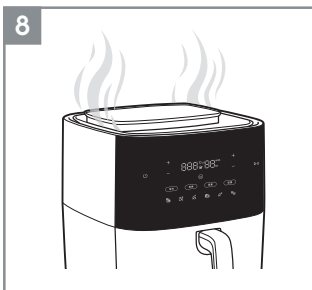
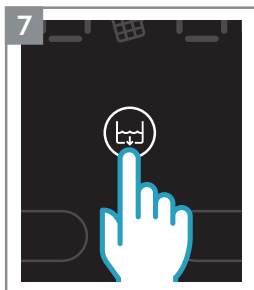
清潔方法 - 蒸煮功能



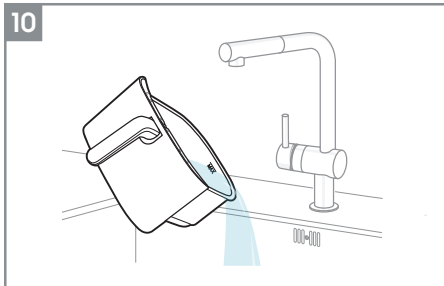
1. 當圖標亮起或您需要清潔機器時，使用“清潔功能”運行清潔循環。
2. 提起水箱，將其取出。
3. 擰開水箱蓋。



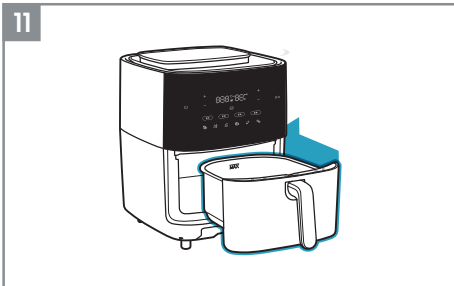
4. 注入純淨水/蒸餾水。
5. 重新擰緊水箱蓋。
6. 將水箱放回空氣炸鍋。



7. 按下“清潔功能”按鈕。
8. 等待，直至蒸汽循環結束。
9. 蒸汽循環結束後，機器會發出嗶嗶聲，此時小心地取出煎鍋。

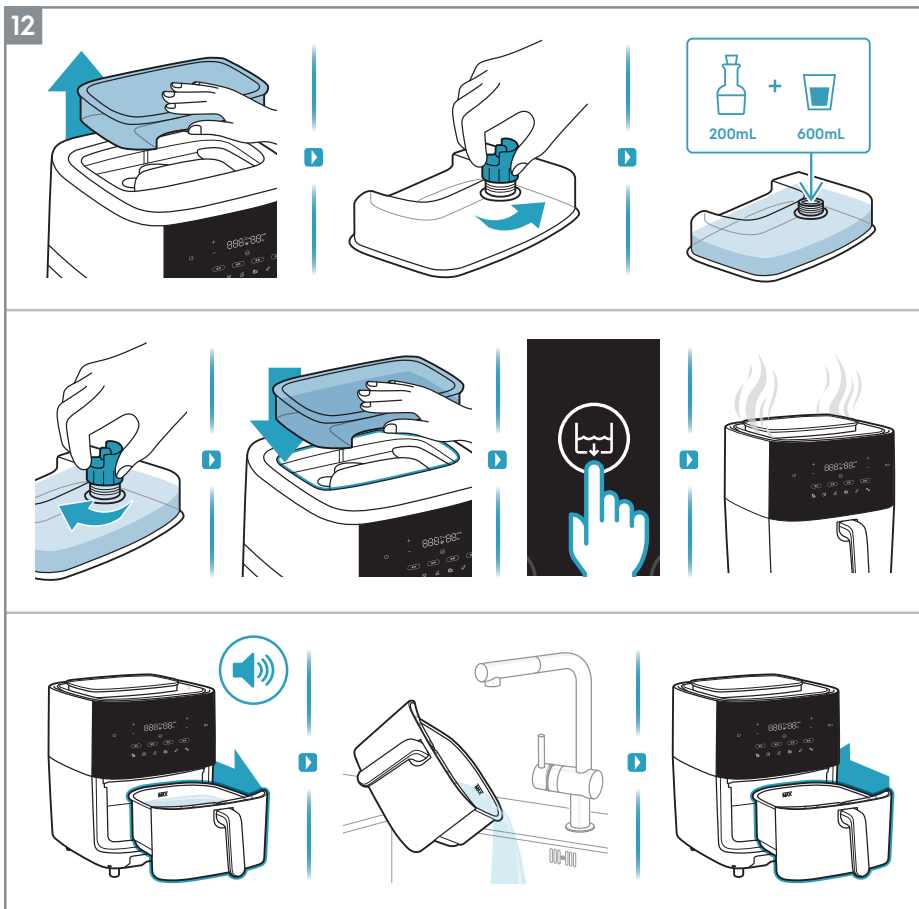


10. 倒出煎鍋裏的水。



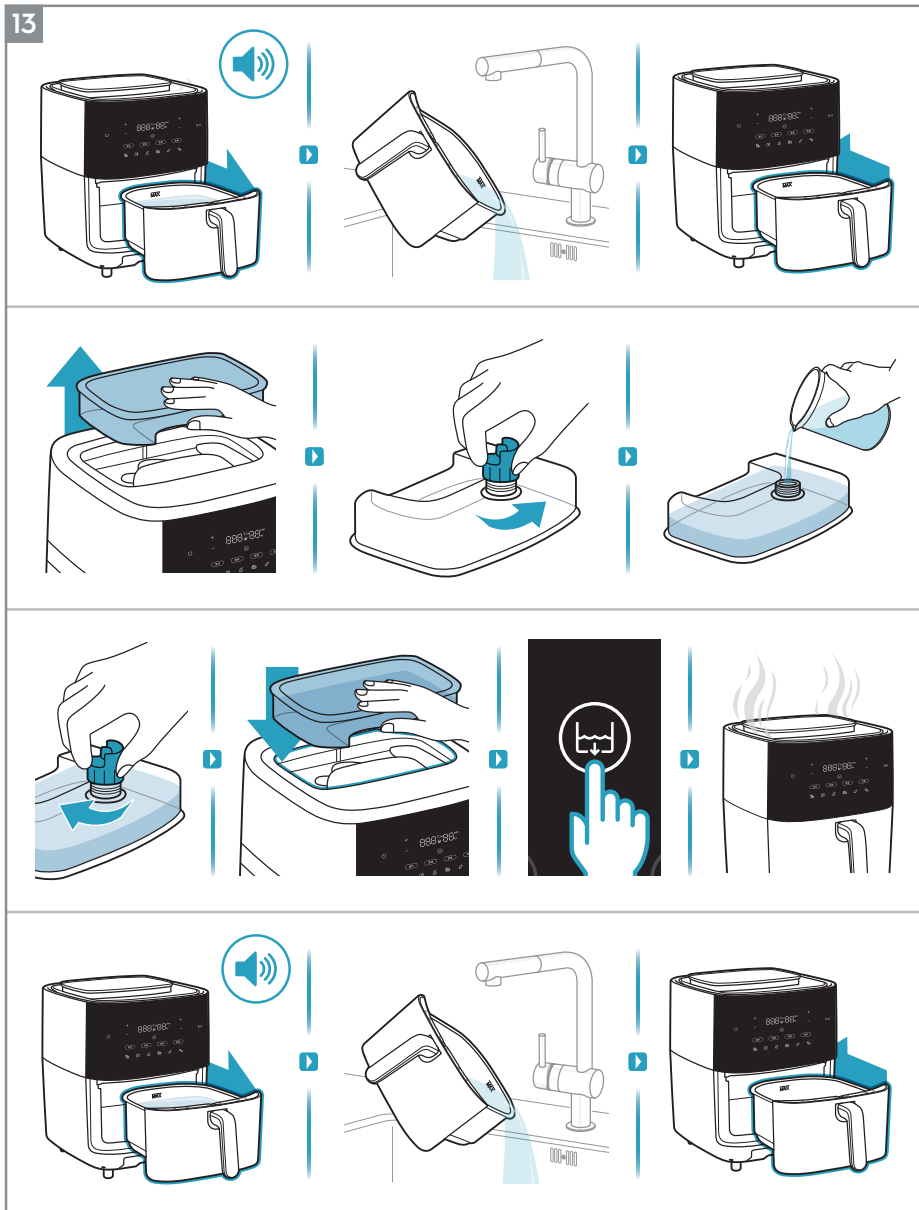
11

11. 將煎鍋放回機器原位。



12. 重複相同步驟（前述第2-11步），注入600毫升純淨水和200毫升醋。

13



13. 最終，重複同樣步驟（前述第2-11步），僅注入純淨水。

故障排除

問題	可能的原因
無法啟動或操作電器。	<ul style="list-style-type: none"> 電器與電源沒有正確連接。 炸籃和煎鍋沒有處在正確位置。確保它們完全被推入電器以接通電源。 沒有設定烹飪時間。
無法將煎鍋推入電器。	<ul style="list-style-type: none"> 炸籃裝填的食物已經超過最大容量。 炸籃沒有放置到位。將炸籃正確放入煎鍋後，應聽到啞嗒聲。 煎鍋底部有異物，致使煎鍋無法正確推入。
電器冒出白烟。	<ul style="list-style-type: none"> 您烹飪的食物含有過多油脂。 煎鍋和炸籃非常乾淨。
螢幕出現E1	<ul style="list-style-type: none"> 溫度傳感器停止工作或斷開。
螢幕出現E2	<ul style="list-style-type: none"> 溫度傳感器已經短路。

* 如果螢幕出現E1或E2報錯資訊，必須由服務中心對電器進行維修。

棄置



本產品或其包裝上的這個標志說明該產品不可作為家庭垃圾丟棄。回收時，請攜帶該產品前往官方收集點或伊萊克斯（Electrolux）服務中心，以便以安全和專業的方式拆除並回收電池和電氣部件。遵守您所在國家關於單獨回收電氣產品和充電電池的規定。

伊萊克斯（Electrolux）保留更改產品、資訊和規格的權力，恕不另行通知。

有鑒於世界各國對綠色環保意識的重視，伊萊克斯依循RoHS「危害性限制物質指令」誠實標示產品化學物質含量，關於本產品的RoHS聲明書，請上伊萊克斯官網-->「支援服務」-->「RoHS聲明書」，依產品類別及型號檢索。<https://www.electrolux.com.tw/support/rohs/#/>

