

Dual Sided Kiosk Solution

.....

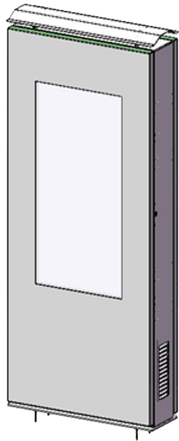
OUTDOOR KIOSK SOLUTION

BASIC OPERATION AND REVIEW
INSTRUCTIONS

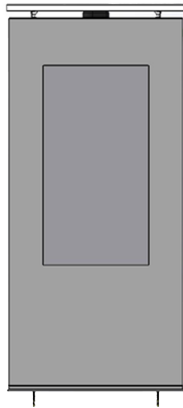
MERIDIAN

Dual Sided Kiosk Solution

Multi Views:



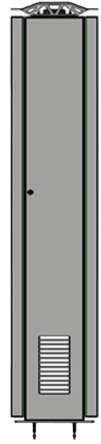
ISO



REAR



LEFT SIDE

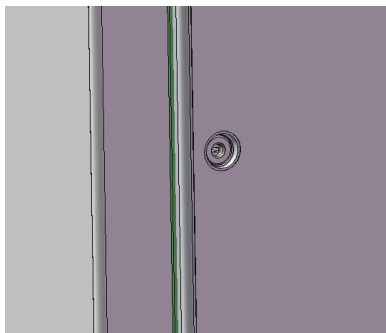


RIGHT SIDE

Opening Doors:

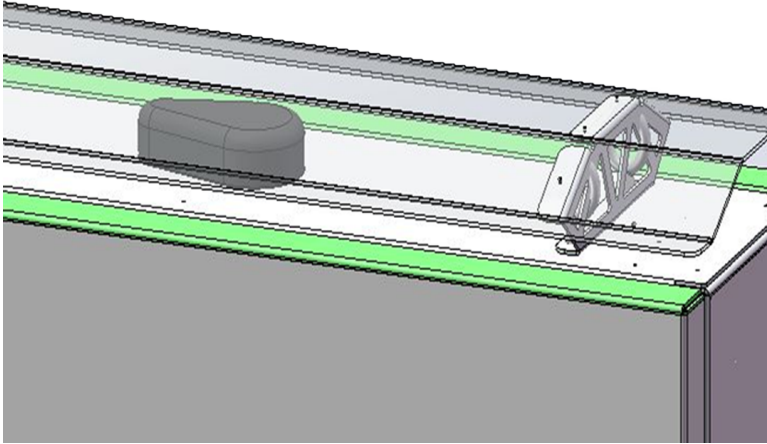
To open the front door, insert small Blue key. Make sure the key is inserted all the way in and turn to the right. Once the key all the way to the right, pull out and remove the inner lock barrel.

Next insert the large T-Handle and turn right to unlock.



MERIDIAN

Dual Sided Kiosk Solution

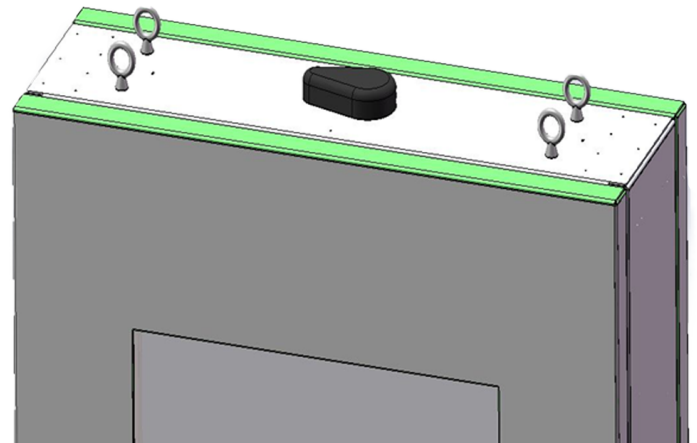


Cell Antenna:

The cell antenna is located under the upper canopy. The wires will route down through the chassis and in the cradle point router, located inside the kiosk.

Eye Bolt View:

Install supplied eye bolts for lifting kiosk into position. Screw down so all four eyes are roughly the same height to avoid twist or canter in the kiosk while lifting.



QUALITY + CERTIFICATION

Meridian promises a level of quality that goes beyond the expected. We control every step of our process from concept to completion, overseeing quality, design, cost and timelines. Many of our products can be UL Listed through UL self-certify and our processes are ISO 9001:2015 certified.

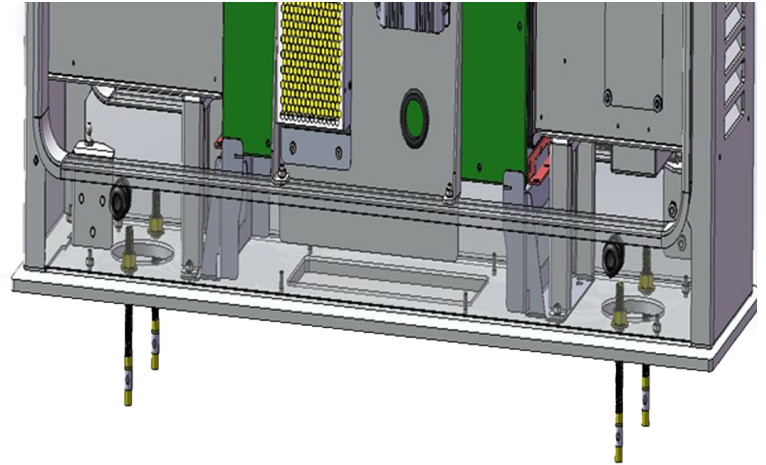


MERIDIAN

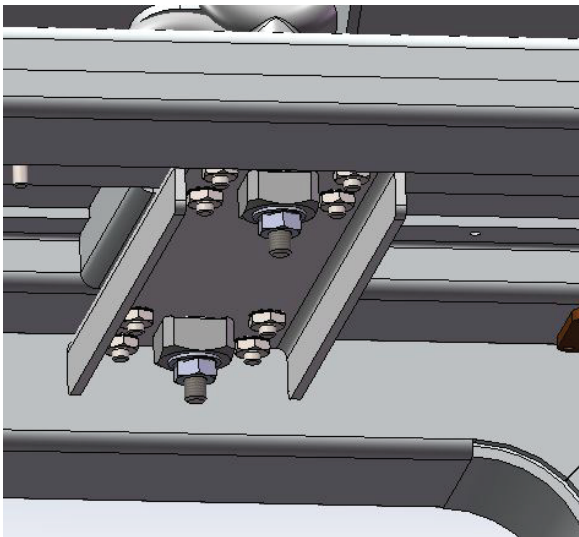
Dual Sided Kiosk Solution

Mounting Bolt Hole, Location, and Access:

Using a lift or sorts, lift the kiosks via the eye bolts mounted in the top of the unit. Place over the top of the concrete sleeve anchors installed in your pad. Then install internal washers over studs and apply nuts. Tighten these down to specs to ensure the kiosks is securely fastened.



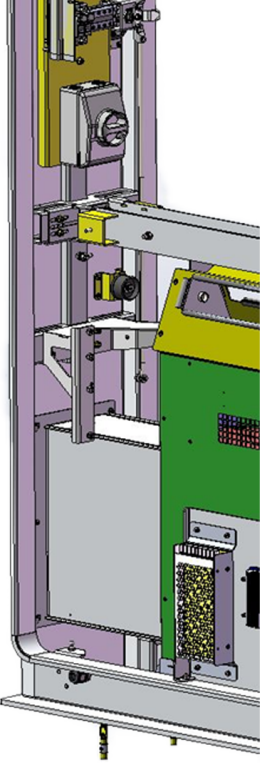
After Installing Mounting Hardware:



After installing the kiosk into position and tightening down the mounting hardware, install the canopy or flat plate on top of the kiosk. This is supplied with studs that when placed on top, will protrude downward into the top area. The supplied nuts can be removed and re-applied. Tighten these down to allow a tight fit between the canopy base flanges and the chassis to keep any water ingress out.

MERIDIAN

Dual Sided Kiosk Solution



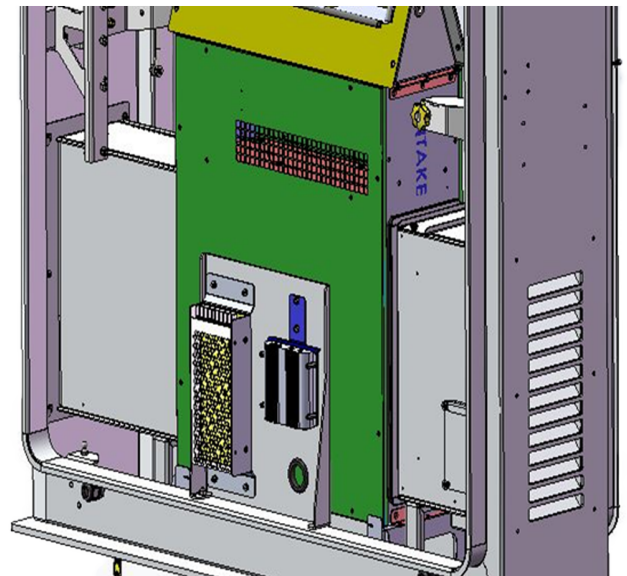
Incoming Power Service Location:

The rectangular cutout in the lower base plate is where the incoming power and data lines will enter the kiosk. They will route up the side wall " behind the side wall braces " and into the power disconnect lock-out box.

120 VAC 20amp circuit is required.

Incoming Data Line Location:

The Data line will enter the kiosk via the rectangular cutout in the base plate and route through the rubber grommet in the plate shown here and into the route. From there the data is transferred into the PC via the installed Ethernet cable.



QUALITY + CERTIFICATION

Meridian promises a level of quality that goes beyond the expected. We control every step of our process from concept to completion, overseeing quality, design, cost and timelines. Many of our products can be UL Listed through UL self-certify and our processes are ISO 9001:2015 certified.



MERIDIAN

Dual Sided Kiosk Solution

Installing the Monitors:

The installation is the same for each side.

With the doors open, remove the side panels, marked in blue in Figure 1.1.

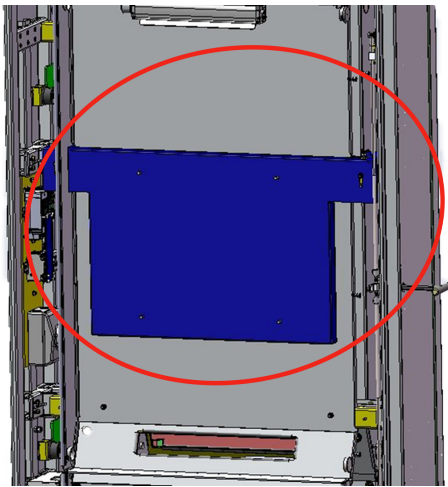


figure 1.2

Next remove the large monitor bracket colored in blue in Figure 1.2

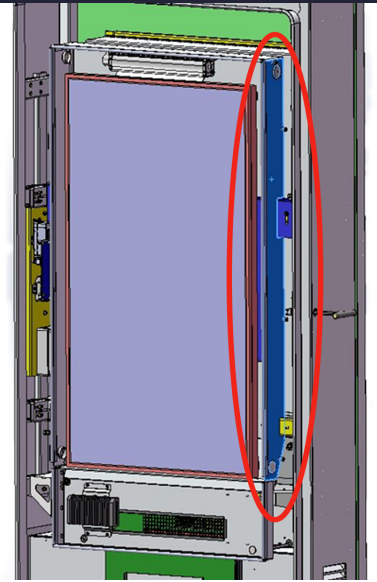
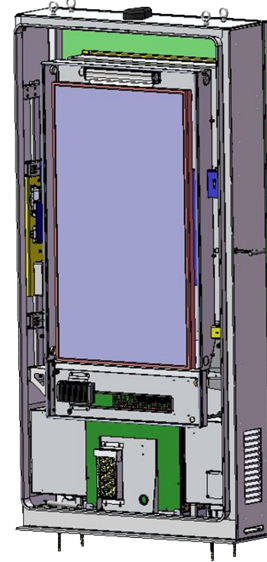


figure 1.1

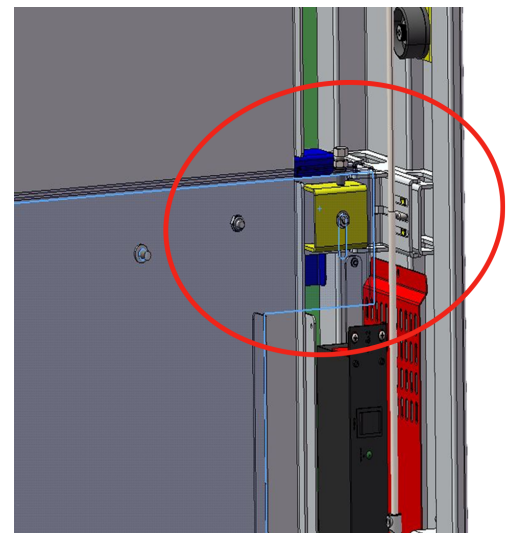
Bolt the supplied bracket to the rear of your monitor with the adjusting bolts towards the top of the monitor.

Lift and set the monitor with bracket onto the channel pictured here and place the retaining nuts on to assure it is secure and tighten nuts.

The adjusting bolts are to allow adjustment in the horizontal alignment of your monitor.

If need, loosen or tighten very just a little to change the alignment.

If you need to adjust vertically, simply loosen the support nuts you just installed, and slide left or right and retighten nuts.

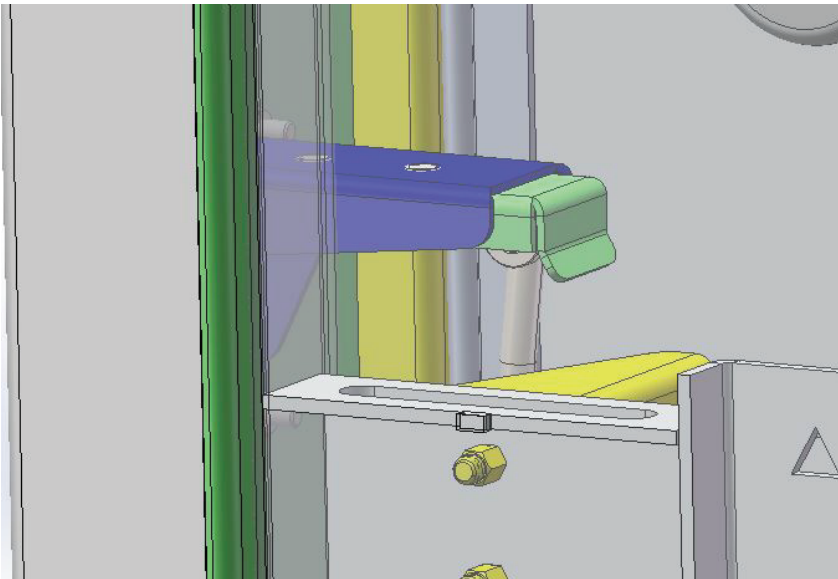
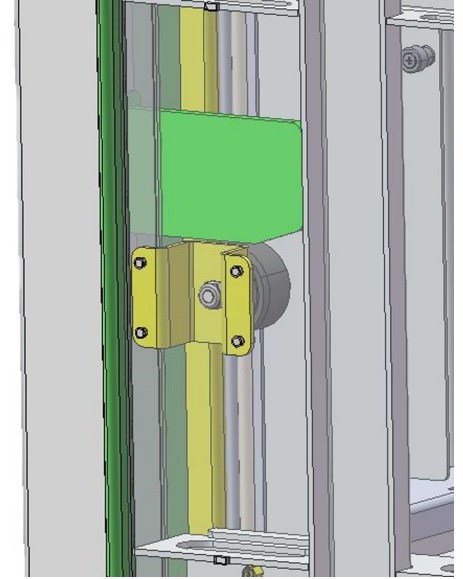


MERIDIAN

Dual Sided Kiosk Solution

Door Alignment Arms and Rollers:

The door alignment, helper system is installed in the upper and lower side of the lock side of the kiosk. As the door arrives close to the closed or locking position, the arms ride on top of the rollers to help align the door.



Door Locking System:

The door locking system has the centrally located lock on the side of the chassis. As the lock is turned via the 10mm hex key supplied, the action pulls the two rods, upper and lower, out of the tray shown in this view. As the door is pushed close the opposed action with the hex key pushes the roller on each end of the rods into position and pulls the door closed.

QUALITY + CERTIFICATION

Meridian promises a level of quality that goes beyond the expected. We control every step of our process from concept to completion, overseeing quality, design, cost and timelines. Many of our products can be UL Listed through UL self-certify and our processes are ISO 9001:2015 certified.

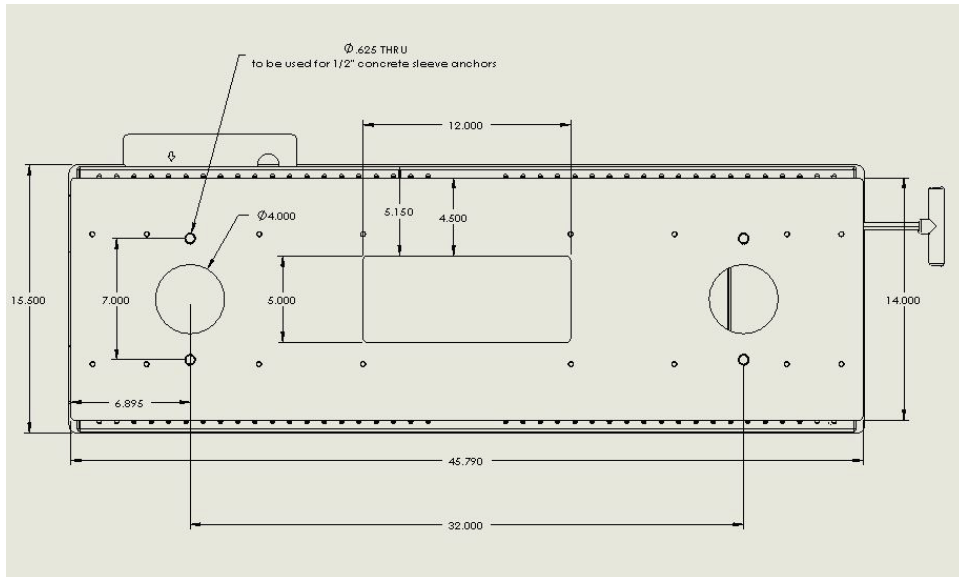


MERIDIAN

Dual Sided Kiosk Solution

Kiosk Base Mounting Layout:

This is the kiosk base layout that shows the dimensions and layout for mounting holes and wire cutout.



Kiosk Graphics:

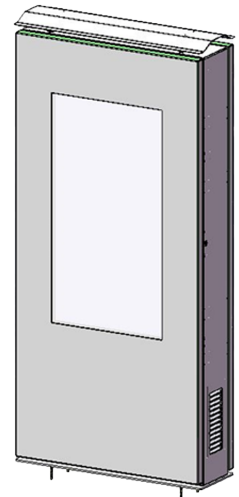
The Graphics are placed in multiple places around the kiosk. If for any reason these get damaged due to usage, please contact Meridian for replacements.

Please contact Meridian for any questions or concerns about the unit.

Phone: 910-944-1757 Ext. 2

Email: help@mzero.com

Enjoy this Outdoor OBD Diagnostic solution.
Thank you!



Corporate Headquarters

312 S. Pine Street,
Aberdeen, NC 28315

910-944-1751 ext. 2
Help@mzero.com

Meridiankiosks.com

