

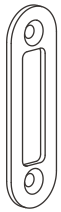
Southbank casement window furniture
INSTRUCTIONS

Handle with plate	1
Window stay	4
Handle with hook	6
Window handle	8

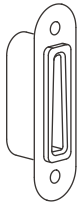


Handle with plate

INCLUDED



Face plate x1



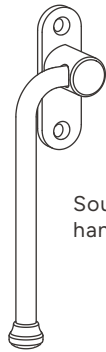
Plastic
mortice
insert x1



4mm flathead
wood screw
(brass) x4

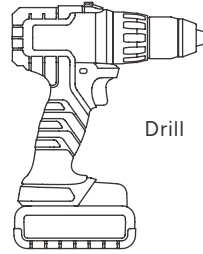


4mm crosshead
wood screw
(steel) x1



Southbank
handle x1

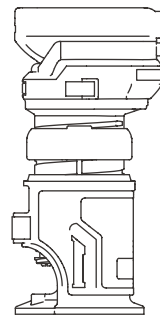
TOOLS YOU'LL NEED



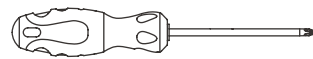
Drill



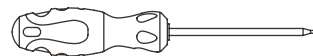
2mm drill bit



Router or
chisel

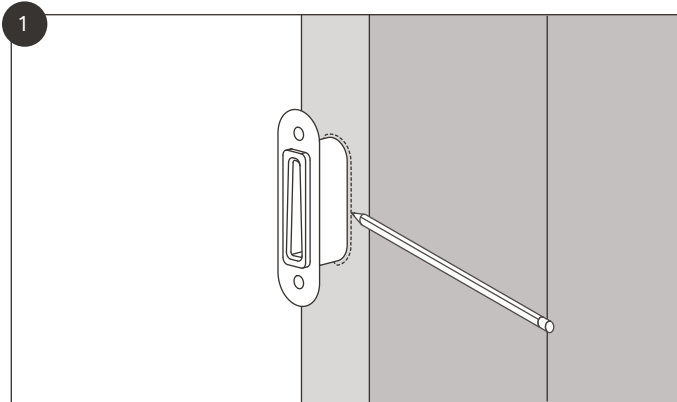


Crosshead
screwdriver

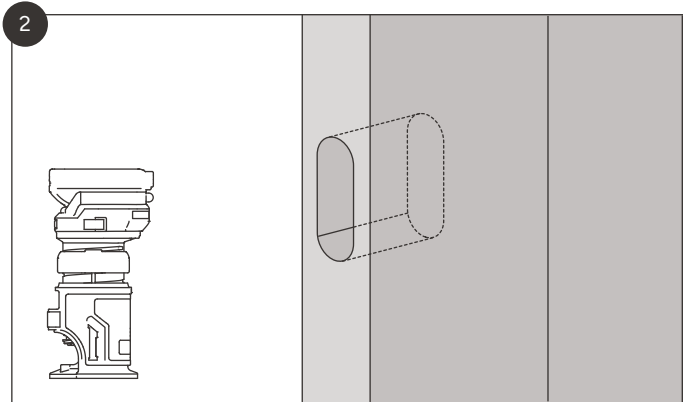


Flathead
screwdriver

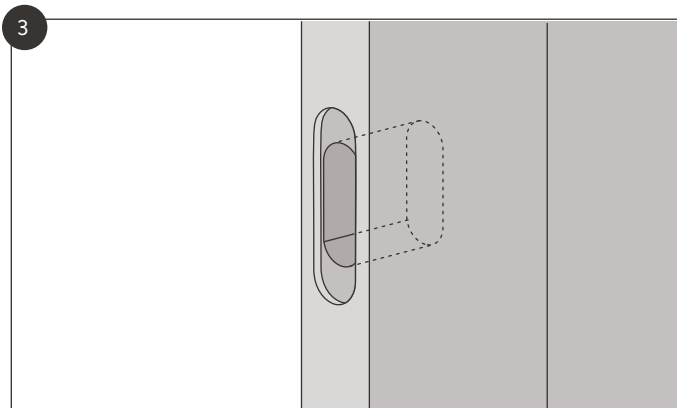
Handle with plate



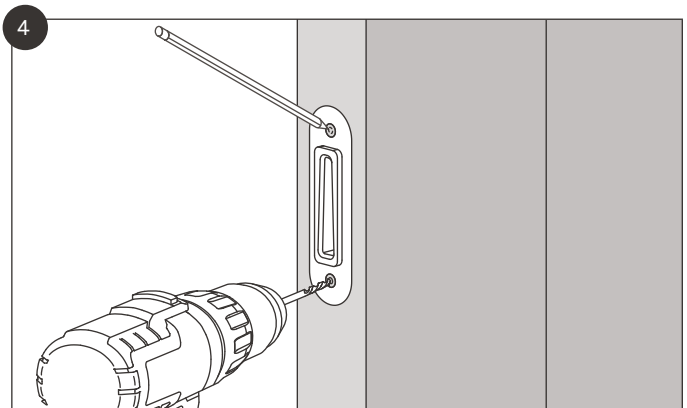
Trace around the back of the plastic mortice insert to mark the position of the pocket.



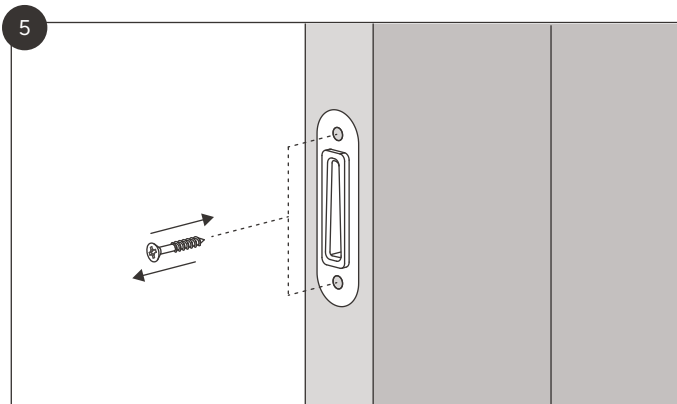
Make a recess in the window frame at least 18mm deep. We recommend using a router for best results.



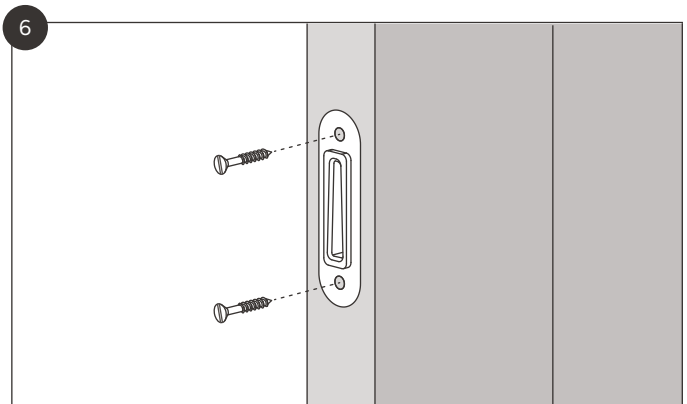
Optional: If a flush fit is desired, trace around the plastic mortice insert and create a recess 2.5mm deep.



Use the plastic mortice insert to mark out the mounting holes and drill pilot holes.

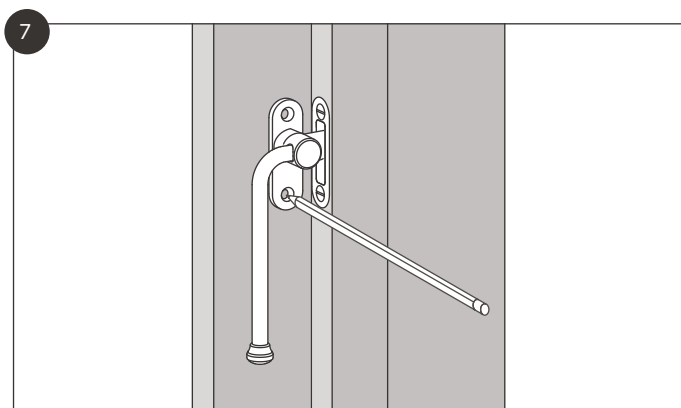


Use the steel crosshead screw to tap holes.

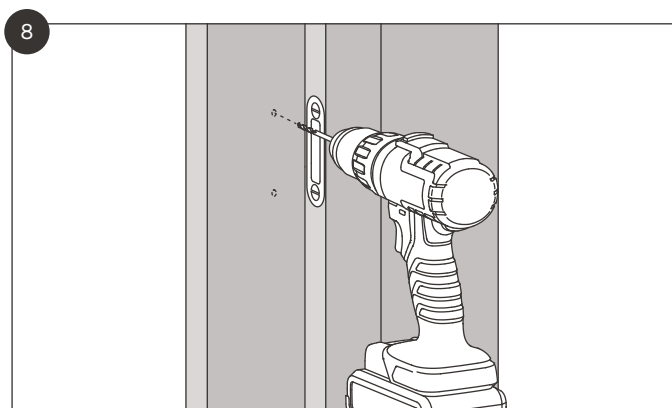


Fasten the plastic mortice insert in place by removing the crosshead and replacing with a brass slotted screw.

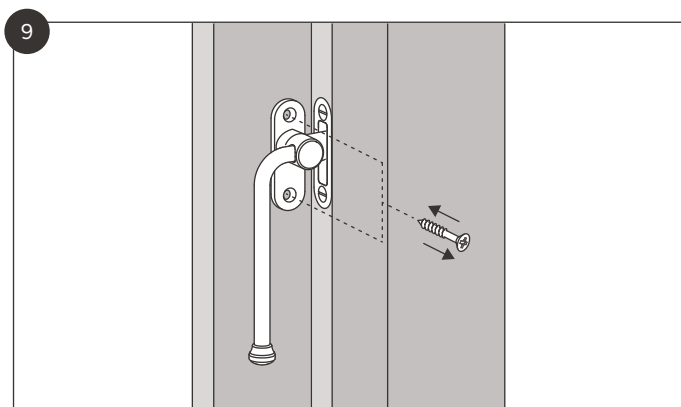
Handle with plate



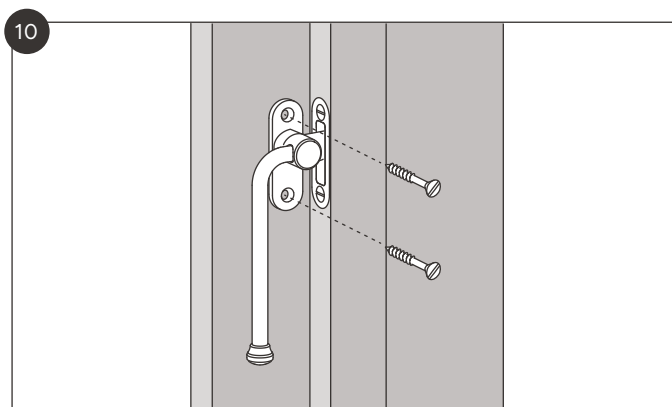
Hold the handle on the window frame and mark the position of the mounting holes. Make sure the handle is in its rest position and that the window can be opened and closed freely.



Drill pilot holes as marked.



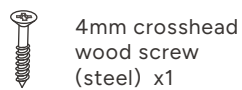
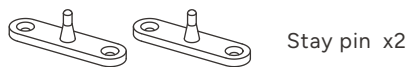
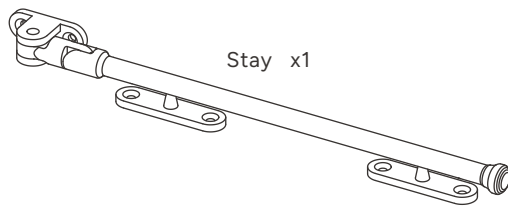
Use the steel crosshead screw to tap holes for the handle.



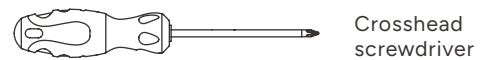
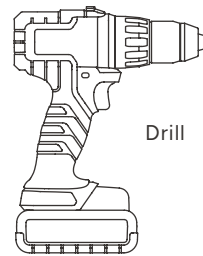
Fasten the handle in place by removing the crosshead and replacing with brass slotted screws.

Window stay

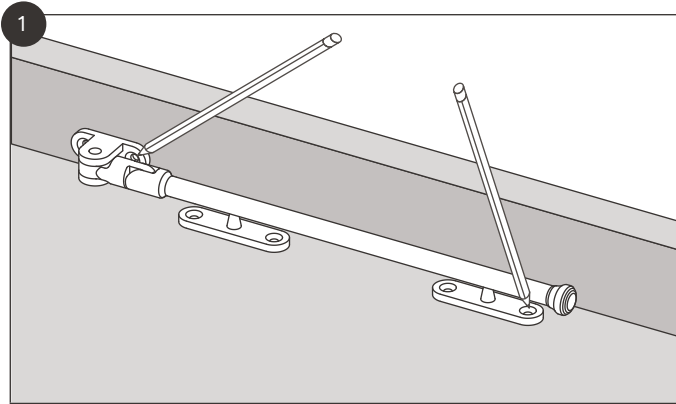
INCLUDED



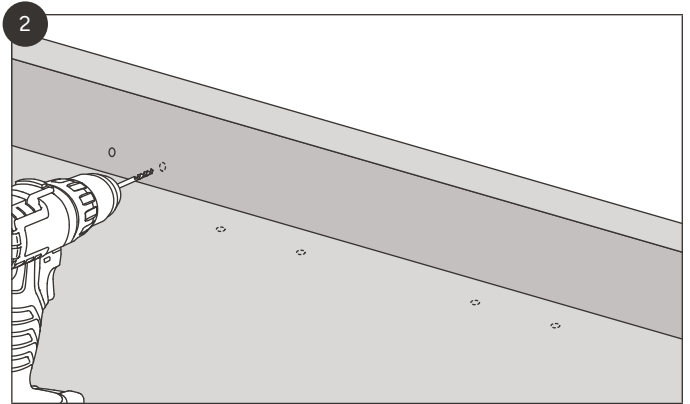
TOOLS YOU'LL NEED



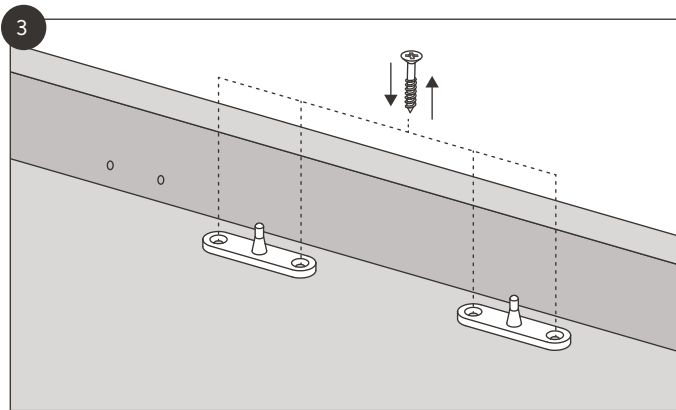
Window stay



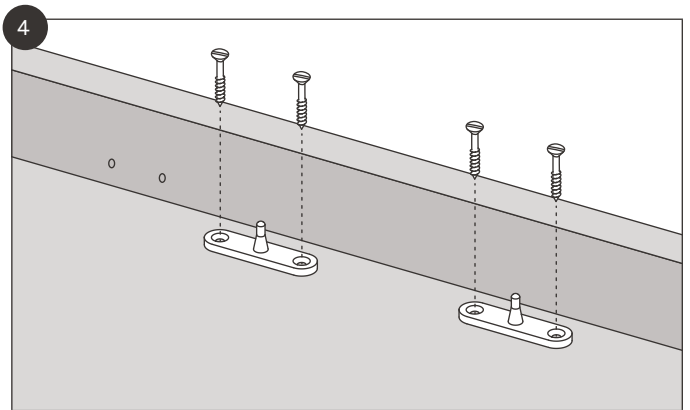
Hold the stay and stay pins on the window frame in the desired position. Mark out the positions of the mounting holes.



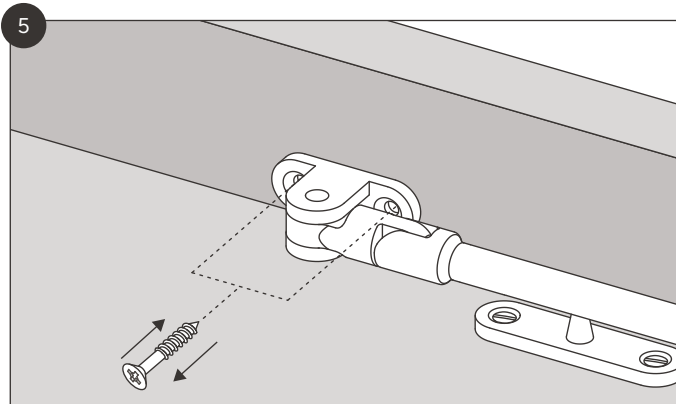
Drill pilot holes as marked.



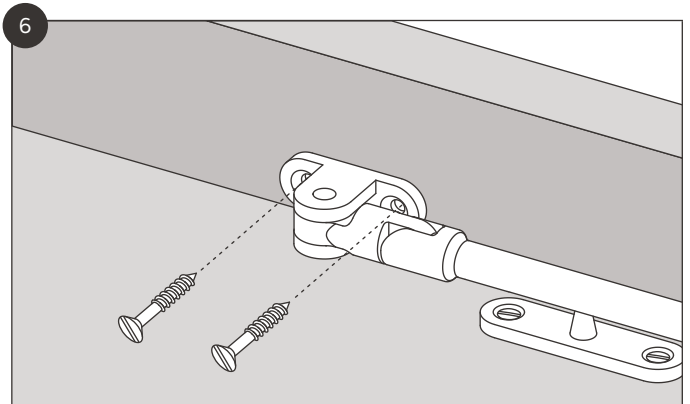
Use the steel crosshead screw to tap holes for the stay pins.



Fasten the stay pins in place by removing the crosshead and replacing with brass slotted screws.



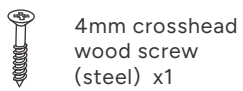
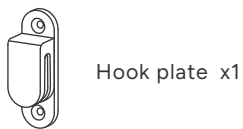
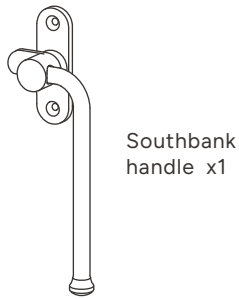
Use the steel crosshead screw to tap holes in the window frame for the stay.



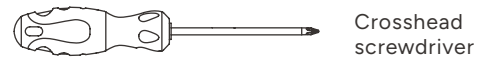
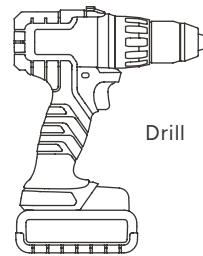
Fasten the stay in place by removing the crosshead and replacing with brass slotted screws.

Handle with hook

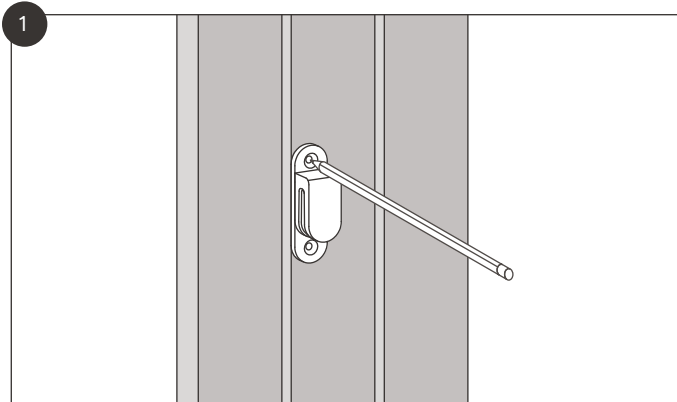
INCLUDED



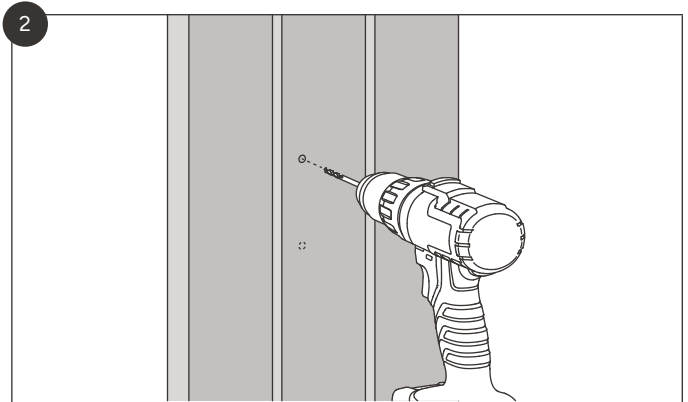
TOOLS YOU'LL NEED



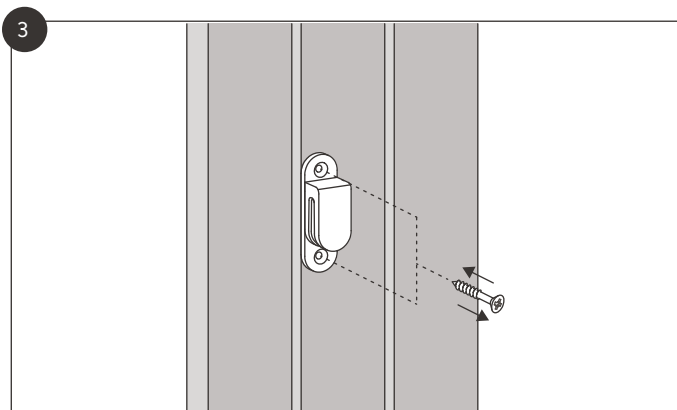
Handle with hook



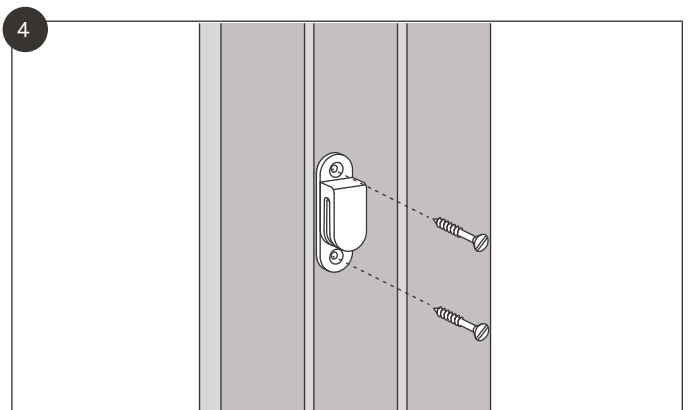
Position the hook plate on the window frame. Mark out the positions of the mounting holes.



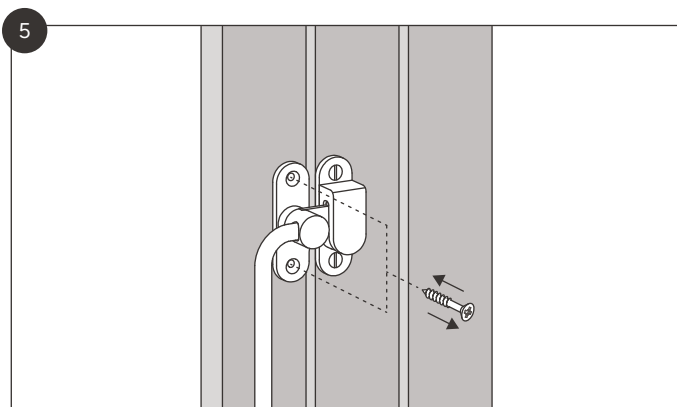
Drill pilot holes as marked.



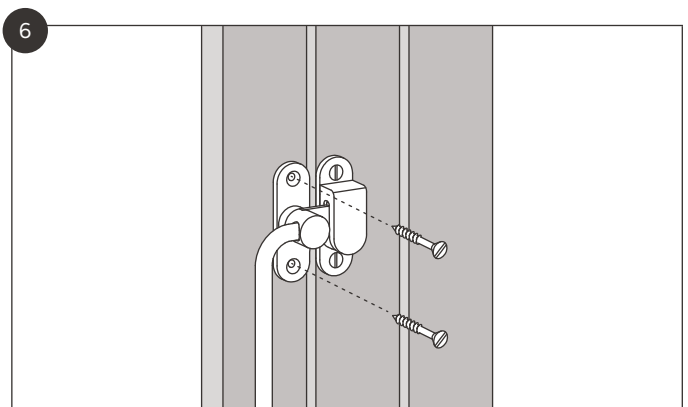
Use the steel crosshead screw to tap holes for the hook plate.



Fasten the hook plate in place by removing the crosshead and replacing with a brass slotted screw.



Use the steel crosshead screw to tap holes for the handle.



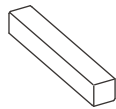
Fasten the handle in place by removing the crosshead and replacing with a brass slotted screw.

Window handle

INCLUDED



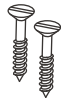
Southbank
handle x1



Spindle x1

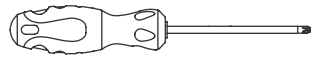


4mm crosshead
wood screw
(steel) x1

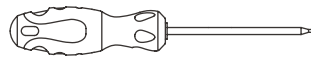


4mm slotted
wood screw
(brass) x2

TOOLS YOU'LL NEED

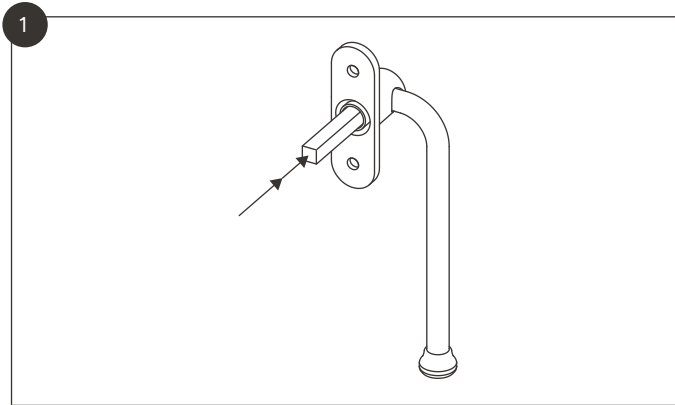


Crosshead
screwdriver

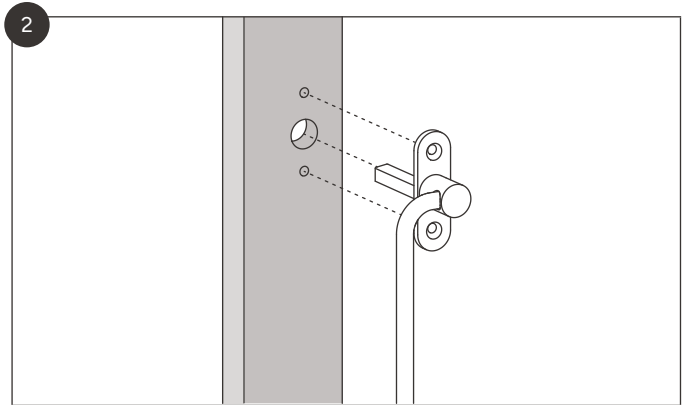


Flathead
screwdriver

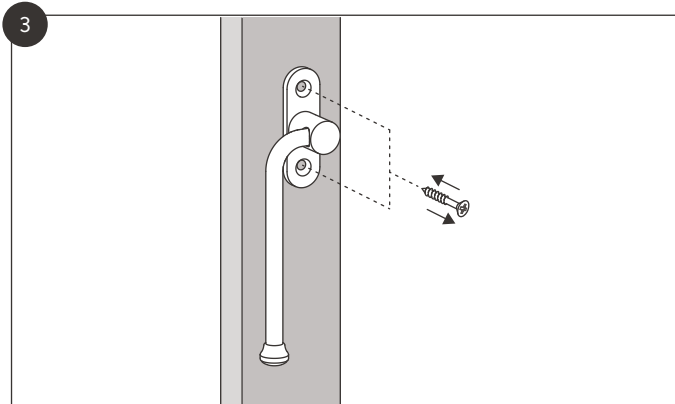
Window handle



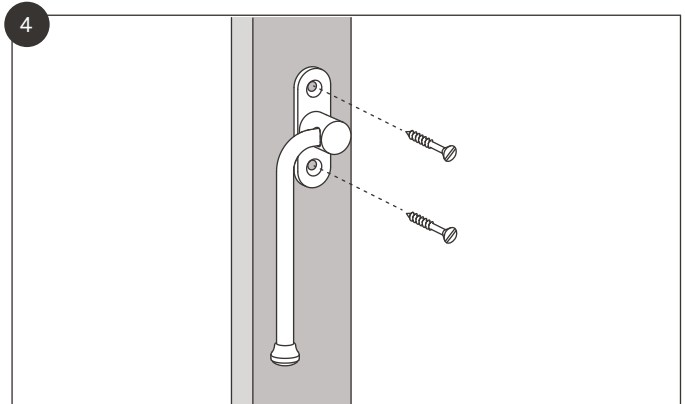
1 Push the 7mm spindle into the back of the handle.



2 Place the handle with spindle into the window mechanism and check that the mounting holes line up.



3 Use the steel crosshead screw to tap holes for the handle.



4 Fasten the handle in place by removing the crosshead and replacing with a brass slotted screw.