

Crane Scales

TABLE OF CONTENTS

| | |
|--|-----------|
| MSI-3460 CHALLENGER 3 | 14 |
| MSI-4260 PORT-A-WEIGH | 16 |
| MSI-4260 IS PORT-A-WEIGH | 18 |
| <i>Intrinsically Safe Crane Scale</i> | |
| MSI-4260M PORT-A-WEIGH | 20 |
| <i>Industrial</i> | |
| MSI-4260M PORT-A-WEIGH | 22 |
| <i>Marine</i> | |
| MSI-4300 PORT-A-WEIGH PLUS | 24 |
| MSI-9300 PORT-A-WEIGH PLUS | |
| CELLSCALE™ RF | 26 |
| MSI-9300HT HI-TORQUE | |
| PORT-A-WEIGH PLUS CELLSCALE™ RF | 28 |
| MSI-6260CS TRANS-WEIGH | |
| CELLSCALE™ RF | 30 |
| MSI-7300 DYNA-LINK 2 | 32 |
| <i>Digital Tension Dynamometer</i> | |
| MSI DYNA-CLAMP | 34 |
| <i>Tension Meter</i> | |
| MSI CLAMP-ON LOAD CELL | 35 |
| MSI LOAD PIN SENSORS | 36 |
| MSI SHEAR WEB LOAD CELL | 37 |
| MSI TENSION LINK LOAD CELL | 38 |
| SHACKLE DIMENSIONS | 40 |

The following product names, logos, brands and other trademarks featured or referred to within this publication are the property of their respective trademark holders.

MSI-3460 Challenger 3



Standard Features

- Crane scale unit with five-digit, 1.5 in (38 mm) LED display
- Top lifting eye and bottom swivel hook
- Lb/kg switch selectable
- Six volt rechargeable battery and universal 115/230 VAC, 50/60 Hz battery charger (NA plug standard)
- Meets or exceeds OSHA, ANSI, ASME and other safety design standards (5:1 Ultimate Safety Factor)
- NTEP Certified (250 lb-10,000 lb capacities)

Options

(Contact MSI for application consultation)

- Rugged remote control (control for On/Off, Zero, Tare and other functions)
- RF modem install for connectivity to MSI-8000, MSI-8000HD RF, MSI-8004HD RF remote display, TranSend and LaserLight2 remote display. Typically 100 ft – 300 ft, line of sight, for longer range consult factory
- Universal direct power supply (115/230 VAC)
- Audible alarm
- Wi-Fi and Bluetooth® communication are available for specialty applications
- OIML and CE approved versions available, consult for more information



Optional rugged remote

Approvals



Specifications

Accuracy:

± (0.1% +1 d) of applied load

Resolution:

2,000 to 3,750 d standard (Up to 10,000 d available)

Enclosure:

NEMA Type 4, IP65, powder coated cast aluminum

Lifting Eye & Hook:

Crosby® or equivalent with 360° non-bearing swivel hook

Design Overload:

200% Safe / 500% Ultimate

Functions:

Power: Turns unit ON or OFF
Zero: Zeros applied load up to 100% of capacity (limited range in NTEP/OIML configurations)
Tare: Tares applied load and displays weight in Net mode
User: Programmable as TEST, UNITS, NET/GROSS, TOTAL, PEAK HOLD & SETPOINTS

Display:

5-digit, 1.5 in (38 mm) LED with programmable brightness control

Displayable Units:

Pounds or kilogram selectable

Annunciators:

COZ, Net, Gross, Total, Peak, Low Battery, lb/kg, Motion, Setpoints, ACK IN, ACK OUT, RF

Power:

6 Volt rechargeable battery. 115/230 VAC battery charger is included

Operating Time:

Up to 80 hours between charging with typical use. Less with optional RF Model

Operating Temperature:

14°F to 104°F (-10°C to 40°C)
Legal for Trade: 14°F to 104°F (-10°C to 40°C)

Auto-Off Mode:

Select for 15, 30, 45, 60 minutes or Off

Auto Sleep Mode:

Power down during non-use and power up with weight change or any key press

Service Counters:

Counts number of lifts over percentage of capacity and lifts over capacity

Calibration:

Digital

Filtering:

OFF, LO, HI-1, HI-2 selectable

Warranty:

One-year limited

Approvals:

NTEP CC 86-021 (250 thru 10,000k only)
OIML R76/2006-A-NL-21.36
CE Marked

Part Number/Price

| Part # | MSI Part # | Description | Capacity | Resolution | Est. Weight | Price |
|---------|-------------|---|---|-------------------------------------|-------------|------------|
| 139102 | 502887-0001 | MSI-3460 250 lb/500 lb cap F/A | 250 lb (125 kg) 500 lb (250 kg) | 0.1 lb (0.05 kg) 0.2 lb (0.1 kg) | 22 lb | \$1,990.00 |
| 139103 | 502887-0002 | MSI-3460 1,000 lb/2,000 lb cap F/A | 1,000 lb (500 kg) 2,000 lb (1,000 kg) | 0.5 lb (0.2 kg) 1 lb (0.5 kg) | 22 lb | \$2,090.00 |
| 139104 | 502887-0003 | MSI-3460 5,000 lb/10,000 lb cap F/A | 5,000 lb (2,500 kg) 10,000 lb (5,000 kg) | 2 lb (1 kg) 5 lb (2 kg) | 39 lb | \$2,620.00 |
| 139105 | 502887-0004 | MSI-3460 15,000 lb cap F/A | 15,000 lb (7,000 kg) | 5 lb (2 kg) | 67 lb | \$3,590.00 |
| 139110 | 502887-0005 | MSI-3460 250 lb/500 lb cap F/A (with RF modem for connectivity to model MSI-8000 and remote) | 250 lb (125 kg) 500 lb (250 kg) | 0.1 lb (0.05 kg) 0.2 lb (0.1 kg) | 22 lb | \$2,170.00 |
| 139111 | 502887-0010 | MSI-3460 1,000 lb/2,000 lb cap F/A (with RF modem for connectivity to model MSI-8000 and remote) | 1,000 lb (500 kg) 2,000 lb (1,000 kg) | 0.5 lb (0.2 kg) 1 lb (0.5 kg) | 22 lb | \$2,310.00 |
| 139112 | 502887-0011 | MSI-3460 5,000 lb/10,000 lb cap F/A (with RF modem for connectivity to model MSI-8000 and remote) | 5,000 lb (2,500 kg) 10,000 lb (5,000 kg) | 2 lb (1 kg) 5 lb (2 kg) | 39 lb | \$2,780.00 |
| 139113 | 502887-0012 | MSI-3460 15,000 lb cap F/A (with RF modem for connectivity to model MSI-8000 and remote) Capacity: 15,000 lb (7,000 kg) Resolution: 5 lb (2 kg) | 15,000 lb (7,000 kg) | 5 lb (2 kg) | 67 lb | \$3,810.00 |
| 176905* | N/A | MSI-3460 250 lb/500 lb cap F/A with Bluetooth® | 250 lb (125 kg) 500 lb (250 kg) | 0.1 lb (0.05 kg) 0.2 lb (0.1 kg) | 22 lb | Consult |
| 176906* | N/A | MSI-3460 1,000 lb/2,000 lb cap F/A with Bluetooth® | 1,000 lb (500 kg) 2,000 lb (1,000 kg) | 0.5 lb (0.2 kg) 1 lb (0.5 kg) | 22 lb | Consult |
| 176907* | N/A | MSI-3460 5,000 lb/10,000 lb cap F/A with Bluetooth® | 5,000 lb (2,500 kg) 10,000 lb (5,000 kg) | 2 lb (1 kg) 5 lb (2 kg) | 39 lb | Consult |
| 176908* | N/A | MSI-3460 15,000 lb cap F/A with Bluetooth® | 15,000 lb (7,000 kg) | 5 lb (2 kg) | 67 lb | Consult |
| 176909 | N/A | MSI-3460 250 lb/500 lb cap F/A with Wi-Fi | 250 lb (125 kg) 500 lb (250 kg) | 0.1 lb (0.05 kg) 0.2 lb (0.1 kg) | 22 lb | \$2,220.00 |
| 176910 | N/A | MSI-3460 1,000 lb/2,000 lb cap F/A with Wi-Fi | 1,000 lb (500 kg) 2,000 lb (1,000 kg) | 0.5 lb (0.2 kg) 1 lb (0.5 kg) | 22 lb | \$2,340.00 |
| 176911 | N/A | MSI-3460 5,000 lb/10,000 lb cap F/A with Wi-Fi | 5,000 lb (2,500 kg) 10,000 lb (5,000 kg) | 2 lb (1 kg) 5 lb (2 kg) | 39 lb | \$2,840.00 |
| 176912 | N/A | MSI-3460 15,000 lb cap F/A with Wi-Fi | 15,000 lb (7,000 kg) | 5 lb (2 kg) | 67 lb | \$3,880.00 |

* Bluetooth modems only work with certain Android devices. Please contact MSI for potential applications.

Options/Accessories

| Part # | MSI Part # | Description | Est. Weight | Price |
|---------|-------------|---|-------------|------------|
| 140049 | C00502-0001 | Battery assembly, 6 volt rechargeable | 3 lb | \$125.00 |
| 139152 | 502956-0001 | Universal 115/230 VAC, 50/60 Hz battery charger (NA plug standard) | 5 lb | \$170.00 |
| 139153 | 502956-0002 | Battery charger 115/230 VAC, 50/60 Hz (EC plug standard) | 5 lb | \$170.00 |
| 197201 | N/A | Battery charger, 115VAC, 50/60 Hz (NA plug standard) CEC compliant | - | \$205.00 |
| 149549 | 503486-0001 | Universal 115/230 VAC 50/60 Hz (NA plug standard) battery charger for MSI-8000 remote display | 3 lb | \$135.00 |
| 178004 | N/A | LaserLight2, 4 in (101 mm) six-digit RF scoreboard (requires MSI-3460 with RF modem) | 21 lb | \$2,135.00 |
| 178006 | N/A | LaserLight2, 6 in (152 mm) six-digit RF scoreboard (requires MSI-3460 with RF modem) | 37 lb | \$2,545.00 |
| Consult | N/A | AC power supply | - | \$295.00 |
| 140058 | N/A | 3460 AC conversion kit | - | \$420.00 |
| Consult | N/A | Audible setpoint alarm | - | \$315.00 |
| 139395 | N/A | Challenger retrofit to 3460 electronics | 1 lb | \$1,000.00 |
| 139397 | N/A | Challenger retrofit to 3460 RF electronics | - | \$1,210.00 |
| 173014 | N/A | Rugged remote control (requires MSI-3460 with RF modem) | - | \$295.00 |
| 139381 | 503208-0001 | MSI-8000 RF remote display (requires MSI-3460 with RF modem) | 5 lb | \$1,190.00 |
| 153591 | N/A | MSI-8000HD ScaleCore RF remote display (requires MSI-3460 with RF modem) | - | \$1,300.00 |

MSI-4260 Port-A-Weigh



Standard Features

- Crane unit with five-digit, 1.2 in (30 mm) LED display
- Top lifting eye or shackle, bottom thrust bearing swivel hook
- 12 volt rechargeable battery and universal 115/230 VAC, 50/60 Hz battery charger (NA plug standard)

Options

(Contact MSI for application consultation)

- Rugged remote control (control for On/Off, Zero, Tare and other functions)
- RF modem install for connectivity to MSI-8000, MSI-8000HD RF, MSI-8004HD RF remote display, TranSend and LaserLight2 remote display. Typically 100 ft – 300 ft, line of sight; for longer range consult factory
- Anti-heat shielding for high temperature applications
- Substitute bottom swivel hook with shackle
- Oversized top lifting eye or shackle
- Oversized bottom hook
- Universal direct power supply; 85-265 VAC, 47-440 Hz / 130-300 VDC
- Low headroom top adapter
- Audible alarm
- Wi-Fi and Bluetooth® communication are available for specialty applications
- Custom top and bottom interfaces
- Factory Mutual and ATEX approved intrinsically safe models available



Optional rugged remote

Approvals



Specifications

Accuracy:

± (0.1% +1 d) of applied load

Resolution:

3,000 to 5,000 d standard (up to 10,000 d available)

Enclosure:

NEMA Type 4, IP66 marine grade 356 alloy anodized cast aluminum

Lifting Eye, Shackle & Hook:

Crosby® or equal with 360° thrust-bearing swivel hook

Design Overload:

200% Safe / 500% Ultimate (except where noted)

Functions:

Power: Turns unit on or off
Zero: Zeros applied load up to 100% of capacity (limited range in NTEP Certified configuration)
Tare: Tares applied load and displays weight in Net mode F1: Programmable as test, units, net/gross, total and peak hold

Display:

Five-digit, 1.2 in (30 mm) LED with programmable brightness control

Displayable Units:

Pounds or kilograms selectable

Annunciators:

COZ, Net, Gross, Total, Peak, Low Battery, lb/kg, Motion, Setpoints

Power:

12 volt rechargeable battery. 115/230 VAC battery charger is included

Operating Time:

Up to 200 hours between charging with typical use, less with RF modem option

Operating Temperature:

-40°F to 122°F (-40°C to 50°C)
Legal for Trade: 14°F to 104°F (-10°C to 40°C)

Auto-Off Mode:

Select for 15, 30, 45 minutes, 1 hour or Off

Auto Sleep Mode:

Power down during non-use and power up with weight change or any key press

Service Counters:

Counts number of lifts over percentage of capacity and lifts over capacity

Calibration:

Digital

Filtering:

OFF, LO, HI-1, HI-2 selectable

Warranty:

One-year limited

Approvals:

NTEP CC 89-090 - 500 lb-2,000 lb (250 kg-1,000 kg)
NTEP CC 89-090A1 - 5,000 lb-70,000 lb (2,000 kg-35,000 kg)
NTEP CC 88-098A2 - 5,000 lb-70,000 lb (2,000 kg-35,000 kg)

Part Number/Price

| Part # | MSI Part # | Description | Capacity | Resolution | Est. Weight | Price |
|-----------|-------------|--------------------------|------------------------|-----------------|-------------|-------------|
| 139460 | 503413-0001 | MSI-4260B 500 lb F/A | 500 lb (250 kg) | 0.2 lb (0.1 kg) | 53 lb | \$4,080.00 |
| 139461 | 503413-0002 | MSI-4260B 2,000 lb F/A | 2,000 lb (1,000 kg) | 1.0 lb (0.5 kg) | 53 lb | \$4,080.00 |
| 139462 | 503413-0003 | MSI-4260B 5,000 lb F/A | 5,000 lb (2,500 kg) | 1.0 lb (0.5 kg) | 62 lb | \$4,190.00 |
| 139463 | 503413-0004 | MSI-4260B 10,000 lb F/A | 10,000 lb (5,000 kg) | 2.0 lb (1.0 kg) | 62 lb | \$4,405.00 |
| 139464 | 503413-0005 | MSI-4260B 20,000 lb F/A | 20,000 lb (10,000 kg) | 5.0 lb (2.0 kg) | 105 lb | \$5,920.00 |
| 139465 | 503413-0006 | MSI-4260B 30,000 lb F/A | 30,000 lb (15,000 kg) | 10 lb (5.0 kg) | 125 lb | \$6,250.00 |
| 139466* | 503413-0007 | MSI-4260B 50,000 lb F/A | 50,000 lb (25,000 kg) | 10 lb (5.0 kg) | 235 lb | \$9,140.00 |
| 139467** | 503413-0008 | MSI-4260B 70,000 lb F/A | 70,000 lb (35,000 kg) | 20 lb (10 kg) | 270 lb | \$11,380.00 |
| 139468*** | 503413-0009 | MSI-4260B 100,000 lb F/A | 100,000 lb (50,000 kg) | 20 lb (10 kg) | 420 lb | \$17,905.00 |

Options/Accessories

| Part # | MSI Part # | Description | Est. Weight | Price |
|--|-------------|---|-------------|------------|
| 150971 | 503508-0001 | Option kit 4260B RF modem (RF modem install for connectivity with MSI-8000 modem and rugged remote) | - | \$210.00 |
| 139381 | 503208-0001 | MSI-8000 RF remote display (requires MSI-4260 equipped with RF modem) | 5 lb | \$1,190.00 |
| 173014 | N/A | RF rugged remote control (requires MSI-4260 equipped with RF modem) | - | \$295.00 |
| 153591 | N/A | MSI-8000HD Remote Display, AC power and tilt bracket option | 3 lb | \$1,300.00 |
| 159221 | N/A | Universal crane scale transport cart | 180 lb | \$1,020.00 |
| 178004 | N/A | LaserLight2, 4 in (101 mm) six-digit RF scoreboard (requires MSI-4260 equipped with RF modem) | 21 lb | \$2,135.00 |
| 178006 | N/A | LaserLight2, 6 in (152 mm) six-digit RF scoreboard (requires MSI-4260 equipped with RF modem) | 37 lb | \$2,545.00 |
| Consult | N/A | AC direct power supply | - | \$510.00 |
| Consult | N/A | Audible set point alarm | - | \$375.00 |
| Consult | N/A | Anti-heat shield | - | \$960.00 |
| 152123 | N/A | Retrofit kit 4260 to 4260B | 8 lb | \$2,305.00 |
| 176956 | N/A | Option kit, 4260B Wi-Fi | - | \$415.00 |
| Consult | N/A | Option kit, 4260B Bluetooth® | - | Consult |
| Accessories | | | | |
| 150367 | D00559-0004 | Battery assembly, 12V rechargeable | 7 lb | \$115.00 |
| 138006 | 502221-0001 | Universal 115/230 VAC, 50/60 Hz battery charger (NA plug standard) | 4 lb | \$295.00 |
| 138007 | 502221-0002 | Universal 115/230 VAC, 50/60 Hz battery charger (UK plug standard) | 4 lb | \$295.00 |
| 138008 | 502221-0003 | Universal 115/230 VAC, 50/60 Hz battery charger (EC plug standard) | 4 lb | \$295.00 |
| 149549 | 503486-0001 | Universal 115/ 230 VAC 50/60 Hz (NA plug standard) battery charger for MSI-8000 remote display | 3 lb | \$135.00 |
| 4260 Sub Hook with Shackle | | | | |
| Consult | N/A | 500 to 10,000 lb, 6.5 ton shackle | - | Consult |
| Consult | N/A | 20,000 to 30,000 lb, 17 ton shackle | - | Consult |
| Consult | N/A | 50,000 lb, 25 ton shackle | - | Consult |
| Consult | N/A | 70,000 lb, 40 ton shackle | - | Consult |
| Consult | N/A | 100,000 lb, 55 ton shackle | - | Consult |
| 4260 Oversize Lifting Eye/Shackle | | | | |
| Consult | N/A | 500 to 10,000 lb capacity | - | Consult |
| Consult | N/A | 20,000 to 30,000 lb capacity, adapter with 25 ton shackle | - | Consult |
| Consult | N/A | 50,000 to 70,000 lb capacity | - | Consult |
| Consult | N/A | 100,000 lb capacity | - | Consult |

* 490% of kg capacity

** 475% of lb capacity/430% of kg capacity

*** 450% of kg capacity

MSI-4260 IS Port-A-Weigh

Intrinsically Safe Crane Scale



Standard Features

- Crane unit with five-digit, 1.2 in (30 mm) LED display
- Top lifting eye or shackle, bottom thrust bearing swivel hook
- 12 volt rechargeable battery and universal 115/230 VAC, 50/60 Hz battery charger (NA plug standard)

Approvals



Pending

Specifications

Accuracy:

$\pm (0.1\% + 1 \text{ d})$ of applied load

Resolution:

3,000 to 5,000 d standard (up to 10,000 d available)

Enclosure:

NEMA Type 4, IP66 marine grade 356 alloy anodized cast aluminum

Intrinsic Safety:

US Listings

FM16US0156X

IS / I, II, III / 1 / CDEFG / T4 Ta = -20°C to 50°C

I / 0 / AEx ia / IIB / T4 Ta = -20°C to 50°C Ga

20 / AEx ia / IIC / T135°C Ta = -20°C to 50°C Da

Canadian Listings

FM16CA0092X

IS / I / 1 / CD / T4 Ta = -10°C to 50°C

IS / II, III / 1 / EFG / T4 Ta = -10°C to 50°C

I / 0 / Ex ia / IIB / T4 Ta = -10°C to 50°C Ga

20 / Ex ia / IIC / T135°C Ta = -10°C to 50°C Da

ATEX Listings

FM18ATEX0052X

II 1 G Ex ia IIB T4 Ga -10°C ≤ Ta ≤ 50°C

II 1 D Ex ia IIC T135°C Da -10°C ≤ Ta ≤ 50°C

Lifting Eye, Shackle & Hook:

Crosby® or equal with 360° thrust-bearing swivel hook

Design Overload:

200% Safe / 500% Ultimate (except where noted)

Functions:

Power: Turns unit on or off

Zero: Zeros applied load up to 100% of capacity (limited range in NTEP Certified configuration)

Tare: Tares applied load and displays weight in Net mode F1: Programmable as test, units, net/gross, total and peak hold

Display:

Five-digit, 1.2 in (30 mm) LED with programmable brightness control

Displayable Units:

Pounds or kilograms selectable

Annunciators:

COZ, Net, Gross, Total, Peak, Low Battery, lb/kg, Motion, Setpoints

Power:

12 volt rechargeable battery

115/230 VAC approved battery charger is included

Operating Time:

Up to 200 hours between charging with typical use

Auto-Off Mode:

Select for 15, 30, 45 minutes, 1 hour or Off

Auto Sleep Mode:

Power down during non-use and power up with weight change or any key press

Service Counters:

Counts number of lifts over percentage of capacity and lifts over capacity

Calibration:

Digital

Filtering:

OFF, LO, HI-1, HI-2 selectable

Warranty:

One-year limited

Approvals:

NTEP CC 19-122

cFMus Approved

CE Pending

MSI-4260 IS Port-A-Weigh

Intrinsically Safe Crane Scale

Part Number/Price

| Part # | Description | Capacity | Resolution | Price |
|--------|--------------------|------------------------|-----------------|-------------|
| 156013 | 500LB, Swivel Hook | 500 lb (250 kg) | 0.2 lb (0.1 kg) | \$6,300.00 |
| 156014 | 2K, Swivel Hook | 2,000 lb (1,000 kg) | 1.0 lb (0.5 kg) | \$6,300.00 |
| 156015 | 5K, Swivel Hook | 5,000 lb (2,500 kg) | 1.0 lb (0.5 kg) | \$6,300.00 |
| 156016 | 10K, Swivel Hook | 10,000 lb (5,000 kg) | 2.0 lb (1.0 kg) | \$6,300.00 |
| 156017 | 20K, Swivel Hook | 20,000 lb (10,000 kg) | 5.0 lb (2.0 kg) | \$7,980.00 |
| 156018 | 30K, Swivel Hook | 30,000 lb (15,000 kg) | 10 lb (5.0 kg) | \$7,980.00 |
| 156019 | 50K, Swivel Hook | 50,000 lb (25,000 kg) | 10 lb (5.0 kg) | \$11,550.00 |
| 156020 | 70K, Swivel Hook | 70,000 lb (35,000 kg) | 20 lb (10 kg) | \$13,650.00 |
| 156021 | 100K, Swivel Hook | 100,000 lb (50,000 kg) | 20 lb (10 kg) | \$21,000.00 |

Options/Accessories

| Part # | Description | Price |
|--------|-----------------|----------|
| 170606 | Battery Charger | \$290.00 |
| 167777 | Spare Battery | \$260.00 |

MSI-4260M Port-A-Weigh

Industrial



Standard Features

- IP66 cast aluminum
- Top lifting eye or shackle, bottom thrust bearing swivel hook
- Five-digit, 1.75 in (44.5 mm) LCD with programmable brightness control
- Battery operated, six (6) D cell 1.5V alkaline batteries or 12 volt rechargeable battery (115/230 VAC battery charger is included)
- Meets or exceeds OSHA, ANSI, ASME and other safety design standards (5:1 Ultimate Safety Factor)
- NTEP Certified configuration

Options

(Contact MSI for application consultation)

- Rugged remote control (control for On/Off, Zero, Tare and other functions)
- RF modem install for connectivity to MSI-8000, MSI-8000HD RF, MSI-8004HD RF remote display, TranSend and LaserLight2 remote display
- Wi-Fi and Bluetooth® communication are available for specialty applications
- Anti-heat shielding for high temperature applications
- Substitute bottom swivel hook with shackle
- Oversized top lifting eye or shackle
- Oversized bottom hook
- Universal direct power supply; 85-265 VAC, 47-440 Hz / 130-300 VDC
- Low headroom top adapter
- Audible alarm
- Custom top and bottom interfaces

Approvals



Specifications

Accuracy:

± (0.1% +1 d) of applied load

Resolution:

Max NTEP Approved Class III: 2,500 Divisions
Max NTEP Approved Class IIII: 5,000 Divisions
Max Non-NTEP Approved: 10,000 Divisions

Enclosure:

IP66 cast aluminum

Lifting Eye, Shackle & Hook:

Crosby® or equal with 360° thrust-bearing swivel hook

Design Overload:

200% Safe / 500% Ultimate (except where noted)

Functions:

Power: Turns unit on or off
Zero: Zeros applied load up to 100% of capacity (limited range in NTEP configurations)
Tare: Tares applied load and displays weight in Net mode
User: Programmable as test, total, unit, peak hold, net/gross, view total and print

Display:

Five-digit, 1.75 in (44.5 mm) LCD with programmable brightness control

Displayable Units:

Pounds or kilograms selectable

Annunciators:

COZ, Battery Level, Net, Total, lb/kg, Stability, RF and Setpoint LEDs

Power:

Battery operated, six (6) D cell 1.5V alkaline batteries or 12 volt rechargeable battery (115/230 VAC battery charger is included)

Operating Time:

Six (6) D Cell 1.5V alkaline batteries:
Up to 1,000 hours of battery life with typical use, less with RF modem
12 volt rechargeable battery:
Up to 250 hours between charging with typical use, less with RF modem.

Operating Temperature:

-20°F to 122°F (-28°C to 50°C)
Legal for Trade: 14°F to 104°F (-10°C to 40°C)

Auto-Off Mode:

Powers off after the scale is not used for the set time (in minutes); 15, 30, 45, 60 or OFF selectable

Auto Sleep Mode:

Powers down during non-use after the set time (in minutes) and powers up with weight change or any key press; 5, 15, 30 or OFF selectable

Service Counters:

Counts number of lifts over percentage of capacity and lifts over capacity

Calibration:

Digital (procedure initiated by calibration switch)

Filtering:

OFF, LO, HI-1 or HI-2 selectable

Radio Link:

802.15.4 at 2.4 GHz

Radio Effective Range:

Typically 100-300 ft line of sight

Warranty:

One-year limited

Approvals:

NTEP CC 19-122

Part Number/Price

| Part # | Description | Capacity | Resolution | Est. Weight | Price |
|--|--|------------------------|-----------------|-------------|-------------|
| 4260M with LCD display, Swivel Hook, No RF, 12V SLA Battery | | | | | |
| 201951 | MSI-4260M 500 lb with 12V Battery F/A | 500 lb (250 kg) | 0.2 lb (0.1 kg) | 53 lb | \$4,680.00 |
| 201953 | MSI-4260M 2,000 lb with 12V Battery F/A | 2,000 lb (1,000 kg) | 1.0 lb (0.5 kg) | 53 lb | \$4,680.00 |
| 201954 | MSI-4260M 5,000 lb with 12V Battery F/A | 5,000 lb (2,500 kg) | 1.0 lb (0.5 kg) | 62 lb | \$4,990.00 |
| 201955 | MSI-4260M 10,000 lb with 12V Battery F/A | 10,000 lb (5,000 kg) | 2.0 lb (1.0 kg) | 62 lb | \$5,200.00 |
| 201956 | MSI-4260M 20,000 lb with 12V Battery F/A | 20,000 lb (10,000 kg) | 5.0 lb (2.0 kg) | 105 lb | \$6,780.00 |
| 201957 | MSI-4260M 30,000 lb with 12V Battery F/A | 30,000 lb (15,000 kg) | 10 lb (5.0 kg) | 125 lb | \$7,120.00 |
| 201958 | MSI-4260M 50,000 lb with 12V Battery F/A | 50,000 lb (25,000 kg) | 10 lb (5.0 kg) | 235 lb | \$10,400.00 |
| 201959 | MSI-4260M 70,000 lb with 12V Battery F/A | 70,000 lb (35,000 kg) | 20 lb (10 kg) | 270 lb | \$12,810.00 |
| 201960 | MSI-4260M 100,000 lb with 12V Battery F/A | 100,000 lb (50,000 kg) | 20 lb (10 kg) | 420 lb | \$19,740.00 |
| 4260M with LCD display, Swivel Hook, No RF, D-Cell Battery | | | | | |
| 201999 | MSI-4260M 500 lb with D-Cell Battery F/A | 500 lb (250 kg) | 0.2 lb (0.1 kg) | 53 lb | \$4,680.00 |
| 202000 | MSI-4260M 2,000 lb with D-Cell Battery F/A | 2,000 lb (1,000 kg) | 1.0 lb (0.5 kg) | 53 lb | \$4,680.00 |
| 202001 | MSI-4260M 5,000 lb with D-Cell Battery F/A | 5,000 lb (2,500 kg) | 1.0 lb (0.5 kg) | 62 lb | \$4,990.00 |
| 202002 | MSI-4260M 10,000 lb with D-Cell Battery F/A | 10,000 lb (5,000 kg) | 2.0 lb (1.0 kg) | 62 lb | \$5,200.00 |
| 202003 | MSI-4260M 20,000 lb with D-Cell Battery F/A | 20,000 lb (10,000 kg) | 5.0 lb (2.0 kg) | 105 lb | \$6,780.00 |
| 202004 | MSI-4260M 30,000 lb with D-Cell Battery F/A | 30,000 lb (15,000 kg) | 10 lb (5.0 kg) | 125 lb | \$7,120.00 |
| 202005 | MSI-4260M 50,000 lb with D-Cell Battery F/A | 50,000 lb (25,000 kg) | 10 lb (5.0 kg) | 235 lb | \$10,400.00 |
| 202006 | MSI-4260M 70,000 lb with D-Cell Battery F/A | 70,000 lb (35,000 kg) | 20 lb (10 kg) | 270 lb | \$12,810.00 |
| 202007 | MSI-4260M 100,000 lb with D-Cell Battery F/A | 100,000 lb (50,000 kg) | 20 lb (10 kg) | 420 lb | \$19,740.00 |

Options/Accessories

| Part # | MSI Part # | Description | Est. Weight | Price |
|--|-------------|---|-------------|------------|
| 150971 | 503508-0001 | Option kit 4260M RF modem (RF modem install for connectivity with MSI-8000 modem and rugged remote) | - | \$210.00 |
| 139381 | 503208-0001 | MSI-8000 RF remote display (requires MSI-4260M equipped with RF modem) | 5 lb | \$1,190.00 |
| 173014 | N/A | RF rugged remote control (requires MSI-4260M equipped with RF modem) | - | \$295.00 |
| 153591 | N/A | MSI-8000HD Remote Display, AC power and tilt bracket option (requires MSI-4260M equipped with RF modem) | 3 lb | \$1,300.00 |
| 159221 | N/A | Universal crane scale transport cart | 180 lb | \$1,020.00 |
| 178004 | N/A | LaserLight2, 4 in (101 mm) six-digit RF scoreboard (requires MSI-4260M equipped with RF modem) | 21 lb | \$2,135.00 |
| 178006 | N/A | LaserLight2, 6 in (152 mm) six-digit RF scoreboard (requires MSI-4260M equipped with RF modem) | 37 lb | \$2,545.00 |
| Consult | N/A | Option kit, 4260M Wi-Fi | - | Consult |
| Consult | N/A | Option kit, 4260M Bluetooth® | - | Consult |
| Accessories | | | | |
| 150367 | D00559-0004 | Battery assembly, 12V rechargeable | 7 lb | \$115.00 |
| 138006 | 502221-0001 | Universal 115/230 VAC, 50/60 Hz battery charger (NA plug standard) | 4 lb | \$295.00 |
| 138007 | 502221-0002 | Universal 115/230 VAC, 50/60 Hz battery charger (UK plug standard) | 4 lb | \$295.00 |
| 138008 | 502221-0003 | Universal 115/230 VAC, 50/60 Hz battery charger (EC plug standard) | 4 lb | \$295.00 |
| 149549 | 503486-0001 | Universal 115/ 230 VAC 50/60 Hz (NA plug standard) battery charger for MSI-8000 remote display | 3 lb | \$135.00 |
| 4260 Sub Hook with Shackle | | | | |
| Consult | N/A | 500 to 10,000 lb, 6.5 ton shackle | - | Consult |
| Consult | N/A | 20,000 to 30,000 lb, 17 ton shackle | - | Consult |
| Consult | N/A | 50,000 lb, 25 ton shackle | - | Consult |
| Consult | N/A | 70,000 lb, 40 ton shackle | - | Consult |
| Consult | N/A | 100,000 lb, 55 ton shackle | - | Consult |
| 4260 Oversize Lifting Eye/Shackle | | | | |
| Consult | N/A | 500 to 10,000 lb capacity | - | Consult |
| Consult | N/A | 20,000 to 30,000 lb capacity, adapter with 25 ton shackle | - | Consult |
| Consult | N/A | 50,000 to 70,000 lb capacity | - | Consult |
| Consult | N/A | 100,000 lb capacity | - | Consult |

MSI-4260M Port-A-Weigh

Marine



Standard Features

- IP66 cast aluminum
- Top lifting eye with lower link interface
- Five-digit, 1.75 in (44.5 mm) LCD with programmable brightness control
- Battery operated, six (6) D cell 1.5V alkaline batteries
- Meets or exceeds OSHA, ANSI, ASME and other safety design standards (5:1 Ultimate Safety Factor)
- NTEP Certified configuration

Options

(Contact MSI for application consultation)

- Rugged remote control (control for On/Off, Zero, Tare and other functions)
- RF modem install for connectivity to MSI-8000, MSI-8000HD RF, MSI-8004HD RF remote display, TranSend and LaserLight2 remote display. Typically 100 ft – 300 ft, line of sight; for longer range consult factory
- Wi-Fi and Bluetooth® communication are available for specialty applications

Approvals



Specifications

Accuracy:

± (0.1% +1 d) of applied load

Resolution:

Max NTEP Approved Class III: 2,500 Divisions
Max NTEP Approved Class IIII: 5,000 Divisions
Max Non NTEP Approved: 10,000 Divisions

Enclosure:

IP66 cast aluminum

Lifting Eye, Link & Hook:

Top lifting eye with lower link interface

Design Overload:

200% Safe / 500% Ultimate

Functions:

Power: Turns unit on or off
Zero: Zeros applied load up to 100% of capacity (limited range in NTEP configurations)
Tare: Tares applied load and displays weight in Net mode
User: Programmable as test, total, unit, peak hold, net/gross, view total and print

Display:

Five-digit, 1.75 in (44.5 mm) LCD with programmable brightness control

Displayable Units:

Pounds or kilograms selectable

Annunciators:

COZ, Battery Level, Net, Total, lb/kg, Stability, RF and Setpoint LEDs

Power:

Battery operated, six (6) D cell 1.5 V alkaline batteries

Operating Time:

Up to 1,000 hours of battery life with typical use, less with RF modem option

Operating Temperature:

-20°F to 122°F (-28°C to 50°C)
Legal for Trade: 14°F to 104°F (-10°C to 40°C)

Auto-Off Mode:

Powers off after the scale is not used for the set time (in minutes); 15, 30, 45, 60 or OFF selectable

Auto Sleep Mode:

Powers down during non-use after the set time (in minutes) and powers up with weight change or any key press; 5, 15, 30 or OFF selectable

Service Counters:

Counts number of lifts over percentage of capacity and lifts over capacity

Calibration:

Digital (procedure initiated by calibration switch)

Filtering:

OFF, LO, HI-1 or HI-2 selectable

Radio Link:

802.15.4 at 2.4 GHz

Radio Effective Range:

Typically 100-300 ft line of sight

Warranty:

One-year limited

Approvals:

NTEP CC 19-122

MSI-4260M Port-A-Weigh

Marine

Part Number/Price

| Part # | Description | Capacity | Resolution | Est. Weight | Price |
|--------|----------------|----------|-----------------|-------------|------------|
| 194593 | MSI-4260M | 5,000 lb | 1.0 lb (0.5 kg) | 58 lb | \$4,720.00 |
| 196908 | MSI-4260M w/RF | 5,000 lb | 1.0 lb (0.5 kg) | 58 lb | \$5,010.00 |

Options/Accessories

| Part # | MSI Part # | Description | Est. Weight | Price |
|---------|-------------|---|-------------|------------|
| 150971 | 503508-0001 | Option kit 4260M RF modem (RF modem install for connectivity with MSI-8000 modem and rugged remote) | - | \$210.00 |
| 139381 | 503208-0001 | MSI-8000 RF remote display (requires MSI-4260M equipped with RF modem) | 5 lb | \$1,190.00 |
| 173014 | N/A | RF rugged remote control (requires MSI-4260M equipped with RF modem) | - | \$295.00 |
| 153591 | N/A | MSI-8000HD Remote Display, AC power and tilt bracket option (requires MSI-4260M equipped with RF modem) | 3 lb | \$1,300.00 |
| 159221 | N/A | Universal crane scale transport cart | 180 lb | \$1,020.00 |
| 178004 | N/A | LaserLight2, 4 in (101 mm) six-digit RF scoreboard (requires MSI-4260M equipped with RF modem) | 21 lb | \$2,135.00 |
| 178006 | N/A | LaserLight2, 6 in (152 mm) six-digit RF scoreboard (requires MSI-4260M equipped with RF modem) | 37 lb | \$2,545.00 |
| Consult | N/A | Option kit, 4260M Wi-Fi | - | Consult |
| Consult | N/A | Option kit, 4260M Bluetooth® | - | Consult |

MSI-4300 Port-A-Weigh Plus



Standard Features

- Crane scale unit with six-digit, 1.6 in (40 mm), backlight LCD display
- Top lifting eye or shackle, bottom thrust bearing swivel hook
- 12 volt rechargeable battery and universal 115/230 VAC, 50/60 Hz battery charger (NA plug standard)
- Meets or exceeds OSHA, ANSI, ASME and other safety design standards (5:1 Ultimate Safety Factor)
- NTEP Certified configuration

Approvals



Options

(Contact MSI for application consultation)

- D-cell battery option, provides up to 2,000 hours of operation
- Substitute bottom swivel hook with shackle
- Oversized top-lifting eye or shackle
- Oversized bottom hook
- Universal direct power supply; 85-265 VAC, 47-440 Hz /130-300 VDC
- Low headroom top adapter
- Audible setpoint alarm
- Custom top and bottom interfaces
- Crane scale cart



Optional crane scale cart

Specifications

Accuracy:

± (0.1% +1 d) of capacity

Resolution:

3,000 to 5,000 d standard (Up to 10,000 d available)

Enclosure:

NEMA Type 4, IP66, marine grade 356 alloy anodized cast aluminum

Top Lifting Eye, Shackle & Hook:

Crosby® or equal with 360° thrust-bearing swivel hook

Design Overload:

200% Safe / 500% Ultimate (except where noted)

Functions:

Power, zero, net/gross, tare and programmable test/user

Display:

6 digit, 1.6 in (40 mm) LCD (upper)
8 digit, 0.8 in (20 mm) LCD (lower) with adjustable display contrast

Displayable Units:

Pounds, kilograms, tons, and metric tons selectable

Power:

12 V rechargeable battery. 115/230 VAC battery charger included

Operating Time:

300 hours with typical use

Operating Temperature:

5°F to 122°F (-15°C to 50°C)
Legal for Trade: 14°F to 104°F (-10°C to 40°C)

Filtering:

OFF, LO, Medium and HI selectable

Warranty:

One-year limited

Approvals:

NTEP CC 92-176 - 5,000 lb (2,500 kg)
Measurement Canada AM-4984

Part Number/Price

| Part # | MSI Part # | Description | Capacity | Resolution | Est. Weight | Price |
|-----------|-------------|-------------------------|------------------------|-----------------|-------------|-------------|
| 138825 | 502666-0013 | MSI-4300 500 lb F/A | 500 lb (250 kg) | 0.2 lb (0.1 kg) | 53 lb | \$4,740.00 |
| 138826 | 502666-0014 | MSI-4300 2,000 lb F/A | 2,000 lb (1000 kg) | 1.0 lb (0.5 kg) | 53 lb | \$4,740.00 |
| 138827 | 502666-0015 | MSI-4300 5,000 lb F/A | 5,000 lb (2500 kg) | 1.0 lb (0.5 kg) | 62 lb | \$4,860.00 |
| 138828 | 502666-0016 | MSI-4300 10,000 lb F/A | 10,000 lb (5000 kg) | 2.0 lb (1.0 kg) | 62 lb | \$5,110.00 |
| 138069 | 502235-0032 | MSI-4300 20,000 lb F/A | 20,000 lb (10,000 kg) | 5.0 lb (2.0 kg) | 105 lb | \$6,380.00 |
| 138070 | 502235-0033 | MSI-4300 30,000 lb F/A | 30,000 lb (15,000 kg) | 10 lb (5.0 kg) | 125 lb | \$6,705.00 |
| 138071* | 502235-0034 | MSI-4300 50,000 lb F/A | 50,000 lb (25,000 kg) | 10 lb (5.0 kg) | 235 lb | \$9,390.00 |
| 138072** | 502235-0035 | MSI-4300 70,000 lb F/A | 70,000 lb (35,000 kg) | 20 lb (10 kg) | 270 lb | \$11,595.00 |
| 138073*** | 502235-0036 | MSI-4300 100,000 lb F/A | 100,000 lb (50,000 kg) | 20 lb (10 kg) | 420 lb | \$18,980.00 |

Options/Accessories

| Part # | MSI Part # | Description | Est. Weight | Price |
|--|-------------|--|-------------|------------|
| 159221 | N/A | Universal crane scale transport cart | 180 lb | \$1,020.00 |
| Consult | N/A | Audible set point alarm | - | \$380.00 |
| Consult | N/A | AC power supply | - | \$510.00 |
| Consult | N/A | D cell battery option | - | Consult |
| Accessories | | | | |
| 150367 | D00559-0004 | Battery assembly, 12 volt rechargeable | 7 lb | \$115.00 |
| 138006 | 502221-0001 | Universal 115/230 VAC, 50/60 Hz battery charger (NA plug standard) | 4 lb | \$295.00 |
| 138007 | 502221-0002 | Universal 115/230 VAC, 50/60 Hz battery charger (UK plug standard) | 4 lb | \$295.00 |
| 138008 | 502221-0003 | Universal 115/230 VAC, 50/60 Hz battery charger (EC plug standard) | 4 lb | \$295.00 |
| 4300 Sub Hook with Shackle | | | | |
| Consult | N/A | 500 to 10,000 lb, 6.5 ton shackle | - | Consult |
| Consult | N/A | 20,000 to 30,000 lb, 17 ton shackle | - | Consult |
| Consult | N/A | 50,000 lb, 25 ton shackle | - | Consult |
| Consult | N/A | 70,000 lb, 40 ton shackle | - | Consult |
| Consult | N/A | 100,000 lb, 55 ton shackle | - | Consult |
| 4300 Oversize Lifting Eye/Shackle | | | | |
| Consult | N/A | 500 to 10,000 lb capacity | - | Consult |
| Consult | N/A | 20,000 to 30,000 lb capacity, adapter with 25 ton shackle | - | Consult |
| Consult | N/A | 50,000 to 70,000 lb capacity | - | Consult |
| Consult | N/A | 100,000 lb capacity | - | Consult |

* 490% of kg capacity

** 475% of lb capacity/430% of kg capacity

*** 450% of kg capacity

MSI-9300 Port-A-Weigh Plus CellScale™ RF



Standard Features

- Crane unit with 2.4 GHz spread spectrum transceiver
- Six-digit, 1.2 in (30 mm) LED display and annunciators
- Top lifting eye or shackle, bottom thrust bearing swivel hook
- 12 volt rechargeable battery and universal 115/230 VAC, 50/60 Hz battery charger (NA Plug Standard)
- NTEP Certified configuration

Options

(Contact MSI for application consultation)

- RF remote crane unit control, includes On/Off, Zero, Tare, Net/Gross, Total and programmable function keys
- Audible alarm
- Anti-heat shielding for high-temperature applications
- Substitute bottom swivel hook with shackle
- Low headroom top adapter
- Oversized top lifting eye or shackle
- Oversized bottom hook
- Universal direct power supply; 85-265 VAC, 47-440 Hz / 130-300 VDC
- Wireless 802.11 b/g Ethernet connectivity
- MSI-9300 retrofit kit - conversion kit to upgrade existing MSI-4300 crane scale to 9300 RF unit
- Custom top and bottom interfaces
- Potential receivers: MSI-9850, 9750A, remote RF Indicators (each sold separately)
- Crane scale cart



Optional crane scale cart

Specifications

Accuracy:

± (0.1% +1 d) of capacity

Resolution:

3,000 to 5,000 d standard
(Up to 10,000 d available)

Enclosure:

NEMA Type 4, IP66, marine grade 356 alloy anodized cast aluminum

Lifting Eye, Shackle & Hook:

Crosby® or equal with 360° thrust-bearing swivel hook

Design Overload:

200% Safe / 500% Ultimate (except where noted)

Functions:

Power, zero, net/gross, tare and programmable test/user

Display:

Six digit, 1.2 in (30 mm) LED with 14 feature annunciators and programmable brightness control

Displayable Units:

Pounds or kilograms selectable

Power:

12 V rechargeable battery, 115-230 VAC battery charger included

Operating Time:

Up to 30 hours between charging with typical use

Operating Temperature:

-4°F to 140°F (-20°C to 60°C)
Legal for Trade: 14°F to 104°F (-10°C to 40°C)

Calibration:

Digital via MSI-9750A or MSI-9850 RF indicators or via serial interface with PC terminal program

Filtering:

LO, Medium and HI selectable

Radio Link:

FHSS at 2.4 GHz

Radio Effective Range:

Typically 500 ft (150 m) indoor, 1000 ft (300 m) outdoor with standard antennas

Approvals:

NTEP CC 07-007; 5,000 - 70,000 lb
(2,500 - 35,000 kg capacities)

Warranty:

One-year limited

Approvals



MSI-9300 Port-A-Weigh Plus CellScale™ RF

Part Number/Price

| Part # | MSI Part # | Description | Capacity | Resolution | Est. Weight | Price |
|-----------|-------------|-------------------------|------------------------|-----------------|-------------|-------------|
| 138704 | 502654-0001 | MSI-9300 500 lb F/A | 500 lb (250 kg) | 0.2 lb (0.1 kg) | 53 lb | \$6,485.00 |
| 138705 | 502654-0002 | MSI-9300 2,000 lb F/A | 2,000 lb (1,000 kg) | 1.0 lb (0.5 kg) | 53 lb | \$6,485.00 |
| 138706 | 502654-0003 | MSI-9300 5,000 lb F/A | 5,000 lb (2,500 kg) | 1.0 lb (0.5 kg) | 62 lb | \$6,600.00 |
| 138707 | 502654-0004 | MSI-9300 10,000 lb F/A | 10,000 lb (5,000 kg) | 2.0 lb (1.0 kg) | 62 lb | \$6,840.00 |
| 138409 | 502518-0005 | MSI-9300 20,000 lb F/A | 20,000 lb (10,000 kg) | 5.0 lb (2.0 kg) | 105 lb | \$8,105.00 |
| 138410 | 502518-0006 | MSI-9300 30,000 lb F/A | 30,000 lb (15,000 kg) | 10 lb (5.0 kg) | 125 lb | \$8,465.00 |
| 138419* | 502518-0015 | MSI-9300 50,000 lb F/A | 50,000 lb (25,000 kg) | 10 lb (5.0 kg) | 235 lb | \$11,115.00 |
| 138420** | 502518-0016 | MSI-9300 70,000 lb F/A | 70,000 lb (35,000 kg) | 20 lb (10 kg) | 270 lb | \$13,330.00 |
| 138421*** | 502518-0017 | MSI-9300 100,000 lb F/A | 100,000 lb (50,000 kg) | 20 lb (10 kg) | 420 lb | \$20,740.00 |

Options/Accessories

| Part # | MSI Part # | Description | Est. Weight | Price |
|--|-------------|--|-------------|------------|
| 159625 | N/A | MSI-9850 RF remote indicator (wall or desk mount) | 10 lb | \$2,640.00 |
| 138486 | 502541-0001 | MSI-9750 RF portable indicator | 2 lb | \$1,980.00 |
| 139056 | N/A | 4 in (101 mm) six-digit RF scoreboard | 21 lb | \$3,100.00 |
| 139052 | N/A | 6 in (152 mm) six-digit RF scoreboard | 37 lb | \$3,845.00 |
| 138341 | 502488-0001 | Universal mounting bracket for MSI-9850 RF remote indicator | 2 lb | \$140.00 |
| 159221 | N/A | Universal crane scale transport cart | 180 lb | \$1,020.00 |
| 138298 | 502434-0001 | RF remote controller | 1 lb | \$325.00 |
| 138317 | 502452-0001 | Spare RF remote | 1 lb | \$115.00 |
| Consult | N/A | AC power supply | - | \$510.00 |
| Consult | N/A | Anti-heat shield | - | \$960.00 |
| Consult | N/A | Audible alarm | - | \$380.00 |
| Consult | N/A | Wi-Fi Ethernet option | - | \$375.00 |
| 138452 | 502520-0001 | Retrofit kit 4300 D cell to 9300 12 Volt | 1 lb | \$4,555.00 |
| 138453 | 502520-0002 | Retrofit kit 4300 D cell to 9300 no modem | 1 lb | \$3,615.00 |
| 138454 | 502520-0003 | Retrofit kit 4300 to 9300 | 1 lb | \$4,120.00 |
| 138455 | 502520-0004 | Retrofit kit 4300 to 9300 no modem | 1 lb | \$3,090.00 |
| 9300 Sub Hook with Shackle | | | | |
| Consult | N/A | 500 to 10,000 lb, 6.5 ton shackle | - | Consult |
| Consult | N/A | 20,000 to 30,000 lb, 17 ton shackle | - | Consult |
| Consult | N/A | 50,000 lb, 25 ton shackle | - | Consult |
| Consult | N/A | 70,000 lb, 40 ton shackle | - | Consult |
| Consult | N/A | 100,000 lb, 55 ton shackle | - | Consult |
| 9300 Oversize Lifting Eye/Shackle | | | | |
| Consult | N/A | 500 to 10,000 lb capacity | - | Consult |
| Consult | N/A | 20,000 to 30,000 lb capacity, adapter with 25 ton shackle | - | Consult |
| Consult | N/A | 50,000 to 70,000 lb capacity | - | Consult |
| Consult | N/A | 100,000 lb capacity | - | Consult |
| Accessories | | | | |
| 150367 | D00559-0004 | Battery assembly, 12 volt rechargeable | 7 lb | \$115.00 |
| 148624 | 501705-0001 | RS-232/RS-485 serial cable | 1 lb | \$115.00 |
| 138006 | 502221-0001 | Universal 115/230 VAC, 50/60 Hz battery charger (NA plug standard) | 4 lb | \$295.00 |
| 138007 | 502221-0002 | Universal 115/230 VAC, 50/60 Hz battery charger (UK plug standard) | 4 lb | \$295.00 |
| 138008 | 502221-0003 | Universal 115/230 VAC, 50/60 Hz battery charger (EC plug standard) | 4 lb | \$295.00 |

* 490% of kg capacity

** 475% of lb capacity/430% of kg capacity

*** 450% of kg capacity

MSI-9300HT Hi-Torque Port-A-Weigh Plus CellScale™ RF



Standard Features

- Crane unit with 2.4 GHz spread spectrum transceiver
- Six-digit, 1.2 in (30 mm) LED display and annunciators
- Top shackle (sold separately)
- 12 volt rechargeable battery and universal 115/230 VAC, 50/60 Hz battery charger (NA plug standard)
- Hi-torque load train designed for use with powered rotation

Options

(Contact MSI for application consultation)

- RF remote crane unit control, includes On/Off, Zero, Tare, Net/Gross, Total and programmable function keys
- Anti-heat shielding for high-temperature applications
- Substitute bottom swivel hook with shackle
- Oversized top or shackle
- Oversized bottom hooks
- Universal direct power supply; 85-265 VAC, 47-440 Hz / 130-300 VDC
- Wireless 802.11 b/g Ethernet connectivity
- Low headroom top adaptor
- Top shackle
- Audible alarm
- Custom top and bottom interfaces
- Potential receivers: MSI-9850, 9750A, remote RF Indicators (each sold separately)

Specifications

Accuracy:

± (0.1% +1 d) of capacity

Resolution:

3,000 to 5,000 d standard
(Up to 10,000 d available)

Enclosure:

NEMA Type 4, IP66, marine grade 356 alloy
anodized cast aluminum

Lifting Eye, Shackle & Hook:

Shackle is optional and Crosby® fixed hook provided
as standard

Design Overload:

200% Safe / 500% Ultimate

Functions:

Power, zero, net/gross, tare and programmable
test/user

Display:

6 digit, 1.2 in (30 mm) LED with 14 feature
annunciators and programmable brightness control

Displayable Units:

Pounds or kilograms selectable

Power:

12 Volt rechargeable battery, 115-230 VAC battery
charger included

Operating Time:

Up to 30 hours between charging with typical use

Operating Temperature:

-4°F to 140°F (-20°C to 60°C)

Calibration:

Digital via MSI-9750A or MSI-9850 RF indicators or
via serial interface with PC terminal program

Filtering:

LO, Medium and HI selectable

Radio Link:

FHSS at 2.4 GHz

Radio Effective Range:

Typically 500 ft (150 m) indoor, 1000 ft (300 m)
outdoor with standard antennas.

Warranty:

One-year limited

MSI-9300HT Hi-Torque Port-A-Weigh Plus CellScale™ RF

Part Number/Price

| Part # | MSI Part # | Description | Capacity | Resolution | Est. Weight | Price |
|--------|-------------|---------------------------|------------------------|----------------|-------------|-------------|
| 138440 | 502519-0001 | MSI-9300HT 30,000 lb F/A | 30,000 lb (15,000 kg) | 10 lb (5.0 kg) | 125 lb | \$14,595.00 |
| 138441 | 502519-0002 | MSI-9300HT 70,000 lb F/A | 70,000 lb (35,000 kg) | 20 lb (10 kg) | 270 lb | Consult |
| 162377 | N/A | MSI-9300HT 120,000 lb F/A | 120,000 lb (60,000 kg) | 50 lb (20 kg) | 550 lb | Consult |

Options/Accessories

| Part # | MSI Part # | Description | Est. Weight | Price |
|--------------------|-------------|--|-------------|------------|
| 141992 | 10539 | Top lifting shackle Crosby® G2130 17 ton for 30,000 lb cap unit | 19.5 lb | Consult |
| 146335 | 23650-0040 | Top lifting shackle Crosby® G2140 40 ton for 70,000 lb cap unit | 34 lb | Consult |
| 146336 | 23650-0050 | Top lifting shackle Crosby® G2140 55 ton* for 120,000 lb cap unit | 103 lb/pair | Consult |
| 159625 | N/A | MSI-9850 RF remote indicator (wall or desk mount) | 10 lb | \$2,640.00 |
| 138486 | 502541-0001 | MSI-9750 RF portable Indicator | 2.2 lb | \$1,980.00 |
| 139056 | N/A | 4 in (101 mm) six-digit RF scoreboard | 21 lb | \$3,100.00 |
| 139052 | N/A | 6 in (152 mm) six-digit RF scoreboard | 37 lb | \$3,845.00 |
| 138341 | 502488-0001 | Universal mounting bracket for MSI-9850 RF remote indicator | 2.2 lb | \$140.00 |
| 159221 | N/A | Universal crane scale transport cart | 180 lb | \$1,020.00 |
| 138298 | 502434-0001 | RF remote controller | 1 lb | \$325.00 |
| 138317 | 502452-0001 | Spare RF remote | 1 lb | \$115.00 |
| Consult | N/A | AC direct power supply | - | \$510.00 |
| Consult | N/A | Anti-heat shield | - | \$960.00 |
| Consult | N/A | Audible alarm | - | \$380.00 |
| Consult | N/A | Wi-Fi Ethernet option | - | \$375.00 |
| Accessories | | | | |
| 148624 | 501705-0001 | RS-232/RS-485 serial cable | 1 lb | \$115.00 |
| 150367 | D00559-0004 | Battery assembly, 12 volt rechargeable | 6.6 lb | \$115.00 |
| 138006 | 502221-0001 | Universal 115/230 VAC, 50/60 Hz battery charger (NA plug standard) | 4 lb | \$295.00 |
| 138007 | 502221-0002 | Universal 115/230 VAC, 50/60 Hz battery charger (UK plug standard) | 4 lb | \$295.00 |
| 138008 | 502221-0003 | Universal 115/230 VAC, 50/60 Hz battery charger (EC plug standard) | 4 lb | \$295.00 |

* 55 Metric Tons = 121,254 lbs

MSI-6260CS Trans-Weigh CellScale™ RF



Standard Features

- Crane unit with 2.4 GHz spread spectrum transceiver
- Top lifting eye or shackle, bottom thrust bearing swivel hook
- 12 volt rechargeable battery and universal 115/230 VAC, 50/60 Hz battery charger (NA Plug Standard)
- Meets or exceeds OSHA, ANSI, ASME and other safety design standards (5:1 Ultimate Safety Factor)
- NTEP Certified configuration

Approvals



Options

(Contact MSI for application consultation)

- ScaleCore configurations available
- Anti-heat shielding for high-temperature applications
- Substitute bottom swivel hook with shackle
- Oversized top lifting eye or shackle
- Oversized bottom hook
- Low headroom top adaptor
- Universal direct power supply; 85-265 VAC, 47-440 Hz / 130-300 VDC
- Wireless 802.11 b/g Ethernet connectivity
- MSI-6260CS retrofit kit - conversion kit to upgrade existing MSI-4260 crane scales to MSI-6260CS
- Custom top and bottom interfaces
- Potential receivers: MSI-9850, MSI-9750A, Scoreboard, TranSend
- Crane scale cart



Optional crane scale cart

Specifications

Accuracy:

± (0.1% +1 d) of applied load

Resolution:

3,000 to 5,000 d standard (Up to 10,000 d available)

Enclosure:

NEMA Type 4, IP66, marine grade 356 alloy anodized cast aluminum

Lifting Eye, Shackle & Hook:

Crosby® or equivalent with 360° thrust-bearing swivel hook

Design Overload:

200% Safe / 500% Ultimate (except where noted)

Functions:

POWER On/Off (all other scale functions are controlled from other optional networked MSI scale indicators MSI-9850 and/or MSI-9750A)

Displayable Units:

Pounds or kilograms selectable

Power:

12 Volt rechargeable battery, 115/230 VAC battery charger included

Operating Time:

Up to 40 hours between charging with typical use

Operating Temperature:

-4°F to 140°F (-20°C to 60°C)
Legal for Trade: 14°F to 104°F (-10°C to 40°C)

Calibration:

Digital via MSI-9750A or MSI-9850 RF indicators or via serial interface with PC terminal program

Radio Link:

FHSS at 2.4 GHz

Radio Link Effective Range:

Typically 500 ft (150 m) indoor, 1,000 ft (300 m) outdoor with standard antennas

Warranty:

One-year limited

Approvals:

NTEP CC 07-007: 5,000 to 70,000 lb (2,500 kg to 35,000 kg)

MSI-6260CS Trans-Weigh CellScale™ RF

Part Number/Price

| Part # | MSI Part # | Description | Capacity | Resolution | Est. Weight | Price |
|-----------|-------------|-------------------------|------------------------|-----------------|-------------|-------------|
| 138729 | 502655-0001 | MSI-6260 500 lb F/A | 500 lb (250 kg) | 0.2 lb (0.1 kg) | 53 lb | \$5,180.00 |
| 138730 | 502655-0002 | MSI-6260 2,000 lb F/A | 2,000 lb (1000 kg) | 1.0 lb (0.5 kg) | 53 lb | \$5,180.00 |
| 138731 | 502655-0003 | MSI-6260 5,000 lb F/A | 5,000 lb (2500 kg) | 1.0 lb (0.5 kg) | 62 lb | \$5,285.00 |
| 138732 | 502655-0004 | MSI-6260 10,000 lb F/A | 10,000 lb (5000 kg) | 2.0 lb (1.0 kg) | 62 lb | \$5,515.00 |
| 138506 | 502559-0005 | MSI-6260 20,000 lb F/A | 20,000 lb (10,000 kg) | 5.0 lb (2.0 kg) | 105 lb | \$6,720.00 |
| 138507 | 502559-0006 | MSI-6260 30,000 lb F/A | 30,000 lb (15,000 kg) | 10 lb (5.0 kg) | 125 lb | \$7,050.00 |
| 138508* | 502559-0007 | MSI-6260 50,000 lb F/A | 50,000 lb (25,000 kg) | 10 lb (5.0 kg) | 235 lb | \$9,590.00 |
| 138509** | 502559-0008 | MSI-6260 70,000 lb F/A | 70,000 lb (35,000 kg) | 20 lb (10 kg) | 270 lb | \$11,685.00 |
| 138510*** | 502559-0009 | MSI-6260 100,000 lb F/A | 100,000 lb (50,000 kg) | 20 lb (10 kg) | 420 lb | \$18,725.00 |

Options/Accessories

| Part # | MSI Part # | Description | Est. Weight | Price |
|--|-------------|--|-------------|------------|
| 159625 | N/A | MSI-9850 RF remote indicator (wall or desk mount) | 10 lb | \$2,640.00 |
| 138486 | 502541-0001 | MSI-9750 RF portable indicator | 2.2 lb | \$1,980.00 |
| 138341 | 502488-0001 | Universal mounting bracket for MSI-9850 RF remote indicator | 2.2 lb | \$140.00 |
| 159221 | N/A | Universal crane scale transport cart | 180 lb | \$1,020.00 |
| 139056 | N/A | 4 in (101 mm) six-digit RF scoreboard | 21 lb | \$3,100.00 |
| 139052 | N/A | 6 in (152 mm) six-digit RF scoreboard | 37 lb | \$3,845.00 |
| Consult | N/A | AC power supply | - | \$510.00 |
| Consult | N/A | Anti-heat shield | - | \$960.00 |
| Consult | N/A | Audible alarm | - | Consult |
| Consult | N/A | Wi-Fi Ethernet option | - | \$375.00 |
| 138575 | N/A | Retrofit kit 4260 to 6260 CS | 1 lb | \$2,830.00 |
| 6260 Sub Hook with Shackle | | | | |
| Consult | N/A | 500 to 10,000 lb, 6.5 ton shackle | - | Consult |
| Consult | N/A | 20,000 to 30,000 lb, 17 ton shackle | - | Consult |
| Consult | N/A | 50,000 lb, 25 ton shackle | - | Consult |
| Consult | N/A | 70,000 lb, 40 ton shackle | - | Consult |
| Consult | N/A | 100,000 lb, 55 ton shackle | - | Consult |
| 6260 Oversize Lifting Eye/Shackle | | | | |
| Consult | N/A | 500 to 10,000 lb capacity | - | Consult |
| Consult | N/A | 20,000 to 30,000 lb capacity, adapter with 25 ton shackle | - | Consult |
| Consult | N/A | 50,000 to 70,000 lb capacity | - | Consult |
| Consult | N/A | 100,000 lb capacity | - | Consult |
| Accessories | | | | |
| 148624 | 501705-0001 | RS-232/RS-485 serial cable | 1 lb | \$115.00 |
| 150367 | D00559-0004 | Battery assembly, 12 volt rechargeable | 6.6 lb | \$115.00 |
| 138006 | 502221-0001 | Universal 115/230 VAC, 50/60 Hz battery charger (NA plug standard) | 4 lb | \$295.00 |
| 138007 | 502221-0002 | Universal 115/230 VAC, 50/60 Hz battery charger (UK plug standard) | 4 lb | \$295.00 |
| 138008 | 502221-0003 | Universal 115/230 VAC, 50/60 Hz battery charger (EC plug standard) | 4 lb | \$295.00 |

* 490% of kg capacity

** 475% of lb capacity/430% of kg capacity

*** 450% of kg capacity

MSI-7300 Dyna-Link 2

Digital Tension Dynamometer



Shown with optional shackles

Standard Features

- Tension dynamometer with 6-digit, 1.00 in (25.4 mm) LCD display
- Two C alkaline batteries for capacities up to 10,000 lb (5,000 kg)
- Two D alkaline batteries for capacities 25,000 lb (12,500 kg) and above

Options

(Contact MSI for application consultation)

- Crosby® top and bottom shackles
- Portable transport case
- Serial output cable
- Rugged remote control (control for On/Off, Zero, Tare and other functions)
- RF modem install for connectivity to MSI-8000, MSI-8000HD RF, MSI-8004HD RF remote display and TranSend. Typically 100 ft – 300 ft, line of sight, for longer range consult factory
- Heavy capacity configurations (60 to 275 Ton)
- Audible alarm
- Wi-Fi or Bluetooth® communications are available for specialty applications

Part Number/Price

| Part # | MSI Part # | Description | Capacity | Resolution | Est. Weight | Price |
|--|-------------|--------------------------------------|-------------------------|-----------------|-------------|-------------|
| 139162 | 502967-0001 | MSI-7300 1,000 lb F/A | 1,000 lb (500 kg) | 0.5 lb (0.2 kg) | 8 lb | \$1,530.00 |
| 139163 | 502967-0002 | MSI-7300 2,500 lb F/A | 2,500 lb (1,250 kg) | 1 lb (0.5 kg) | 9 lb | \$1,530.00 |
| 139164 | 502967-0003 | MSI-7300 5,000 lb F/A | 5,000 lb (2,500 kg) | 2 lb (1.0 kg) | 9 lb | \$1,530.00 |
| 139165 | 502967-0004 | MSI-7300 10,000 lb F/A | 10,000 lb (5,000 kg) | 5 lb (2.0 kg) | 11 lb | \$1,640.00 |
| 139166 | 502967-0005 | MSI-7300 25,000 lb F/A | 25,000 lb (12,500 kg) | 10 lb (5 kg) | 19 lb | \$2,200.00 |
| 139167 | 502967-0006 | MSI-7300 50,000 lb F/A | 50,000 lb (25,000 kg) | 20 lb (10 kg) | 29 lb | \$2,850.00 |
| 139168* | 502967-0007 | MSI-7300 100,000 lb F/A | 100,000 lb (50,000 kg) | 50 lb (20 kg) | 65 lb | \$3,720.00 |
| Optional Configurations (for connectivity to MSI-8000 RF Remote Display) F/A | | | | | | |
| 139441 | 503381-0001 | MSI-7300 RF module | 1,000 lb (500 kg) | 0.5 lb (0.2 kg) | 8 lb | \$1,720.00 |
| 139442 | 503381-0002 | MSI-7300 RF module | 2,500 lb (1,250 kg) | 1 lb (0.5 kg) | 9 lb | \$1,720.00 |
| 139443 | 503381-0003 | MSI-7300 RF module | 5,000 lb (2,500 kg) | 2 lb (1 kg) | 9 lb | \$1,720.00 |
| 139444 | 503381-0004 | MSI-7300 RF module | 10,000 lb (5,000 kg) | 5 lb (2 kg) | 11 lb | \$1,830.00 |
| 139445 | 503381-0005 | MSI-7300 RF module | 25,000 lb (12,500 kg) | 10 lb (5 kg) | 19 lb | \$2,380.00 |
| 139446 | 503381-0006 | MSI-7300 RF module | 50,000 lb (25,000 kg) | 20 lb (10 kg) | 29 lb | \$3,030.00 |
| 139447* | 503381-0007 | MSI-7300 RF module | 100,000 lb (50,000 kg) | 50 lb (20 kg) | 65 lb | \$3,910.00 |
| 159168* | N/A | MSI-7300 RF module includes MSI-8000 | 120,000 lb (60,000 kg) | 50 lb (20 kg) | 57 lb | \$5,030.00 |
| 159169* | N/A | MSI-7300 RF module includes MSI-8000 | 180,000 lb (90,000 kg) | 100 lb (50 kg) | 74 lb | \$7,650.00 |
| 159170* | N/A | MSI-7300 RF module includes MSI-8000 | 260,000 lb (130,000 kg) | 100 lb (50 kg) | 100 lb | \$10,230.00 |
| 159171* | N/A | MSI-7300 RF module includes MSI-8000 | 380,000 lb (190,000 kg) | 200 lb (100 kg) | 169 lb | \$11,580.00 |
| 159172** | N/A | MSI-7300 RF module includes MSI-8000 | 550,000 lb (275,000 kg) | 200 lb (100 kg) | 336 lb | \$21,840.00 |

Specifications

Accuracy:

- 0.1% FS of rated capacity (up to 50 ton)
- 0.5% FS of rated capacity (50 ton and above)

Enclosure:

- NEMA Type 4, IP65,
- anodized corrosion-resistant finish

Material:

- 2024 aircraft grade aluminum
- Capacities above 100 K have zinc plated enclosures and 4340 load cell bodies

Design Overload:

- 200% Safe/700% Ultimate* (except where noted)

Functions:

- On/Off, Zero, Hi-Speed Peak Hold, Setpoints, Total, Tare, Auto-Off, Motion Filter

Display:

- 6 digit, 1.00 in (25.4 mm) LCD

Displayable Units:

- Pounds, kilograms, kilonewtons, tons, metric tons

LED Annunciators:

- Function 1, Function 2, Setpoint 1, Setpoint 2

LCD Annunciators:

- Net, Center of Zero, Stable, Battery Test, Peak Hold, Total

Power:

- Two each C alkaline batteries for capacities up to 10,000 lb two each D alkaline batteries for capacities 25,000 lb–100,000 lb

Operating Time:

- From 150 to 300 hours in typical use depending on unit capacity and battery configuration.
- Approximately 25 to 30 hours with optional RF modem link installed.

Operating Temperature:

- 4°F to 140°F (-20°C to 60°C)

Calibration:

- Digital

Filtering:

- OFF, LO, HI selectable

Data Output:

- Serial RS-232

Warranty:

- Two-year limited

MSI-7300 Dyna-Link 2

Digital Tension Dynamometer

Part Number/Price

| Part # | MSI Part # | Description | Capacity | Resolution | Est. Weight | Price |
|---|------------|---|-------------------------|-----------------|-------------|-------------|
| MSI-7300 Dyna-Link 2 with Bluetooth® | | | | | | |
| 176806 | N/A | MSI-7300 1,000 lb F/A with Bluetooth® *** | 1,000 lb (500 kg) | 0.5 lb (0.2 kg) | 8 lb | Consult |
| 176807 | N/A | MSI-7300 2,500 lb F/A with Bluetooth® *** | 2,500 lb (1,250 kg) | 1 lb (0.5 kg) | 9 lb | Consult |
| 176808 | N/A | MSI-7300 5,000 lb F/A with Bluetooth® *** | 5,000 lb (2,500 kg) | 2 lb (1.0 kg) | 9 lb | Consult |
| 176809 | N/A | MSI-7300 10,000 lb F/A with Bluetooth® *** | 10,000 lb (5,000 kg) | 5 lb (2.0 kg) | 11 lb | Consult |
| 176810 | N/A | MSI-7300 25,000 lb F/A with Bluetooth® *** | 25,000 lb (12,500 kg) | 10 lb (5 kg) | 19 lb | Consult |
| 176811 | N/A | MSI-7300 50,000 lb F/A with Bluetooth® *** | 50,000 lb (25,000 kg) | 20 lb (10 kg) | 29 lb | Consult |
| 176812 | N/A | MSI-7300 100,000 lb F/A with Bluetooth® *** | 100,000 lb (50,000 kg) | 50 lb (20 kg) | 65 lb | Consult |
| 176822* | N/A | MSI-7300 120,000 lb F/A with Bluetooth® *** | 120,000 lb (60,000 kg) | 50 lb (20 kg) | 57 lb | Consult |
| 176823 | N/A | MSI-7300 180,000 lb F/A with Bluetooth® *** | 180,000 lb (90,000 kg) | 100 lb (50 kg) | 74 lb | Consult |
| 176824 | N/A | MSI-7300 260,000 lb F/A with Bluetooth® *** | 260,000 lb (130,000 kg) | 100 lb (50 kg) | 100 lb | Consult |
| 176825 | N/A | MSI-7300 380,000 lb F/A with Bluetooth® *** | 380,000 lb (190,000 kg) | 200 lb (100 kg) | 169 lb | Consult |
| 176826** | N/A | MSI-7300 550,000 lb F/A with Bluetooth® *** | 550,000 lb (275,000 kg) | 200 lb (100 kg) | 336 lb | Consult |
| MSI-7300 Dyna-Link 2 Wi-Fi | | | | | | |
| 176813 | N/A | MSI-7300 1,000 lb F/A with Wi-Fi | 1,000 lb (500 kg) | 0.5 lb (0.2 kg) | 8 lb | \$1,660.00 |
| 176814 | N/A | MSI-7300 2,500 lb F/A with Wi-Fi | 2,500 lb (1,250 kg) | 1 lb (0.5 kg) | 9 lb | \$1,660.00 |
| 176815 | N/A | MSI-7300 5,000 lb F/A with Wi-Fi | 5,000 lb (2,500 kg) | 2 lb (1.0 kg) | 9 lb | \$1,660.00 |
| 176816 | N/A | MSI-7300 10,000 lb F/A with Wi-Fi | 10,000 lb (5,000 kg) | 5 lb (2.0 kg) | 11 lb | \$1,775.00 |
| 176817 | N/A | MSI-7300 25,000 lb F/A with Wi-Fi | 25,000 lb (12,500 kg) | 10 lb (5 kg) | 19 lb | \$2,300.00 |
| 176818 | N/A | MSI-7300 50,000 lb F/A with Wi-Fi | 50,000 lb (25,000 kg) | 20 lb (10 kg) | 29 lb | \$3,010.00 |
| 176819 | N/A | MSI-7300 100,000 lb F/A with Wi-Fi | 100,000 lb (50,000 kg) | 50 lb (20 kg) | 65 lb | \$3,790.00 |
| 176827 | N/A | MSI-7300 120,000 lb F/A with Wi-Fi | 120,000 lb (60,000 kg) | 50 lb (20 kg) | 57 lb | \$4,870.00 |
| 176828 | N/A | MSI-7300 180,000 lb F/A with Wi-Fi | 180,000 lb (90,000 kg) | 100 lb (50 kg) | 74 lb | \$7,420.00 |
| 176829 | N/A | MSI-7300 260,000 lb F/A with Wi-Fi | 260,000 lb (130,000 kg) | 100 lb (50 kg) | 100 lb | \$9,920.00 |
| 176830 | N/A | MSI-7300 380,000 lb F/A with Wi-Fi | 380,000 lb (190,000 kg) | 200 lb (100 kg) | 169 lb | \$11,245.00 |
| 176831 | N/A | MSI-7300 550,000 lb F/A with Wi-Fi | 550,000 lb (275,000 kg) | 200 lb (100 kg) | 336 lb | \$20,800.00 |

* 500% Ultimate overload

** 440% Ultimate overload

*** Bluetooth modems only work with certain Android devices. Please contact MSI for potential applications.

Options/Accessories

| Part # | MSI Part # | Description | Est. Weight | Price |
|--------|-------------|---|---------------|------------|
| 151357 | 10541 | Shackle anchor, bolt type 3.25 ton for 500 lb-5,000 lb unit | 3 lb/pair | Consult |
| 151355 | 10538 | Shackle anchor, bolt type 6.5 ton for 10,000 lb unit | 6 lb/pair | Consult |
| 141992 | 10539 | Shackle anchor, bolt type 17 ton for 25,000 lb unit | 39 lb/pair | Consult |
| 151356 | 10540 | Shackle anchor, bolt type 25 ton for 50,000 lb unit | 63 lb/pair | Consult |
| 146336 | 23650-0050 | Shackle anchor, bolt type 55 ton for 100,000 lb unit | 103 lb | Consult |
| 151359 | N/A | Shackle anchor, bolt type 85 ton for 180,000 lb unit | 206 lb/pair | Consult |
| 151360 | N/A | Shackle anchor, bolt type 120 ton for 260,000 lb unit | 225 lb/pair | Consult |
| 151361 | N/A | Shackle anchor, bolt type 175 ton for 380,000 lb unit | 665 lb/pair | Consult |
| 151358 | N/A | Shackle anchor, bolt type 250 ton for 550,000 lb unit | 1,300 lb/pair | Consult |
| 139381 | 503208-0001 | MSI-8000 RF remote display (requires MSI-7300 equipped with optional RF modem) | 5 lb | \$1,190.00 |
| 153591 | N/A | MSI-8000HD RF remote display, A/C powered with tilt stand (requires MSI-7300 equipped with optional RF modem) | 5 lb | \$1,300.00 |
| 165313 | N/A | Heavy duty pelican transport case with precision cut; heavy duty foam for 500 lb-10,000 lb capacity units | 10 lb | \$325.00 |
| 145076 | 14317 | Transport crate for 25,000 lb and 50,000 lb capacity unit | 35 lb | \$395.00 |
| 145073 | 14311 | Transport crate for 100,000 lb capacity unit | 42 lb | \$395.00 |
| 139470 | 503414-0002 | RS-232 serial cable for MSI-7300 | 1 lb | \$135.00 |
| 178004 | N/A | LaserLight2, 4 in (101 mm) six-digit RF scoreboard (requires MSI-7300 equipped with optional RF modem) | 21 lb | \$2,135.00 |
| 178006 | N/A | LaserLight2, 6 in (152 mm) six-digit RF scoreboard (requires MSI-7300 equipped with optional RF modem) | 37 lb | \$2,545.00 |
| 149549 | 503486-0001 | Universal 115/ 230 VAC 50/60 Hz (NA plug standard) battery charger for MSI-8000 remote display | 3 lb | \$135.00 |
| 182223 | N/A | 12V car charger adapter for MSI-8000 | 1 lb | \$115.00 |
| 173014 | N/A | Rugged remote control (requires MSI-7300 equipped with optional RF modem) | - | \$295.00 |
| 150964 | 503489-0001 | RS-232 13 ft (4 m) serial cable for MSI-8000 | 1 lb | \$170.00 |
| 139438 | N/A | Audible setpoint | - | \$380.00 |
| 149550 | 503486-0002 | Battery charger for MSI-8000 EC plug | - | \$130.00 |



Optional rugged remote

MSI Dyna-Clamp

Tension Meter



Standard Features

- Dual line LCD display
- Two user programmable function keys
- IP65 anodized aluminum frame
- RS-232 port
- Up to 8 factory calibrations included at no additional cost

Options

(Contact MSI for application consultation)

- Heavy-duty carrying case

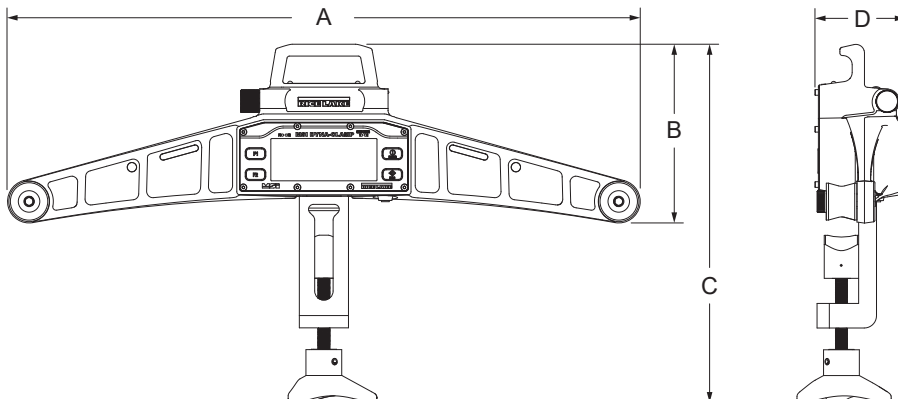
Part Number/Price

| Part # | Description | Tension | Price |
|--------|------------------------------|-----------------------------------|------------|
| 189581 | MSI Dyna-Clamp Tension Meter | 12,500 lbf (5,670 kgf / 55.60 kN) | \$4,395.00 |

Options/Accessories

| Part # | Description | Price |
|--------|--------------------------|----------|
| 198418 | Heavy-duty carrying case | \$550.00 |

| Dimensions | | | |
|------------|----------------------|---|---|
| A | 25.70 in (652.80 mm) | C | 13.75 in-15.50 in (349.25 mm-393.70 mm) |
| B | 7.30 in (185.50 mm) | D | 3.70 in (94 mm) |



Approvals
CE

Specifications

Power:

Battery operated two AA Cell 1.5 V alkaline batteries (can be replaced with rechargeable NiMH cells)

Max Tension:

12,500 lbf (5,670 kgf / 55.60 kN)

Operating Time:

Alkaline AA Cells 24 hours

Wire Rope:

Diameter 3/16 in (5 mm) – 1 in (25 mm)

Accuracy:

Rated Accuracy $\pm 3\%$ of capacity

Units:

lbf, kgf, kN

Resolution:

Standard 2,500 divisions

Two-Line LCD Display:

Primary display (bottom) six, 0.7 in (18 mm) numeric digits
Secondary display (top) eight, 0.5 in (13 mm) numeric digits

Function Keys:

Two programmable keys (user-defined) – F1, F2 (Test, unit, print, scroll, actfun)
Two permanent keys – power, zero

Setpoints:

Two dedicated setpoints for minimum and maximum allowable wire rope tension (LEDs for measurements outside of allowable range)

Auto-Off Mode:

Prolongs battery life by turning power OFF after 15, 30, 45 or 60 minutes of no activity (user determined)

Enclosure:

IP65 powder-coated aluminum frame

Calibration:

Up to eight (8) factory programmed wire rope calibrations

Operating Temperature:

-4°F to 122°F (-10°C to 50°C)

Operator Use:

Outdoor

Storage:

Indoor

Warranty:

Two-year limited

Approvals:

CE Marked

Specifications

System Accuracy of Calibrated Capacity:
3-5%

Material:
4340 steel, zinc plated

Output Resistance:
350 ohm

IP Rating:
IP68

Cable Color Code:
Red +Excitation
Black -Excitation
Green +Signal
White -ignal

Cable Length:
20 ft integral cable with blunt end termination



Optional SCT-2200 transmitter



Standard Features

- ETD 150 construction
- Accommodates up to 3/4-in wire rope size
- IP68
- Larger diameter clamp ons available - call for pricing

Options

- Custom sizes available on request
- Pair with an SCT transmitter for basic safety functions

Part Number/Price

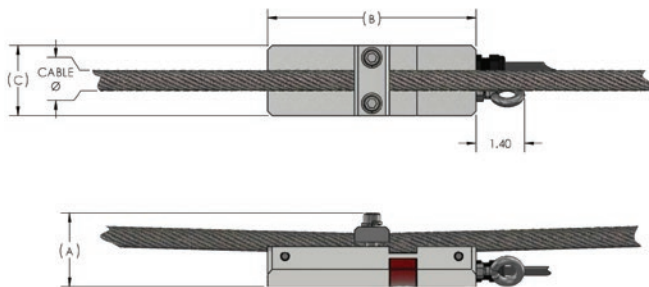
| Part # | Description | Price |
|--------|--|------------|
| 179080 | Load Cell Assembly Clamp-On for 3/8 to 1/2 in wire rope | \$710.00 |
| 179082 | Load Cell Assembly Clamp-On for 9/16 to 3/4 in wire rope | \$840.00 |
| 188816 | Kit with SCT-2200 for 3/8 to 1/2 in wire rope | \$1,260.00 |
| 188817 | Kit with SCT-2200 for 9/16 to 3/4 in wire rope | \$1,400.00 |

Larger diameter clamp ons available - call for pricing

Dimensions

| Cable Range | P/N | A | B | C |
|-------------|--------|--------------|------|------|
| 3/8 - 1/2 | 179080 | Cable + 1.70 | 6.00 | 2.00 |
| 9/16-3/4 | 179082 | Cable + 1.67 | 6.00 | 2.00 |

*8 mm cable can be used with PN 179080



MSI Load Pin Sensors



Standard Features

- Internally gauged load pin
- Idler sheave or dead end pin preferred location
- Minimum 5:1 safety factor
- 17-4 stainless steel construction
- $\pm 1\%$ to 3% accuracy of hoist capacity
- -40°F to 140°F standard operating temperature (other temperature compensated ranges available)

A key component for MSI's integrated overhead weighing solutions is the Load Pin Sensor. Typically designed and manufactured specifically to each integrated solution, the MSI load pin is strictly industrial grade. Each load pin design is precision machined from 17-4 stainless steel for safety, strength and corrosion resistance.

Each strain gauge location is precisely calculated and correctly placed in the optimum concentrated stress area of each installation. This MSI applied engineering process ensures the most efficient and accurate performance for each specific installation.

MSI load pin designs apply only internally mounted strain gauges for complete protection from the outside environment.

To receive a quotation for a load pin sensor to meet your application requirements, complete the load pin questionnaire on page 169 or online at www.ricelake.com/questionnaires or contact an MSI overhead weighing specialist for further application assistance.

Standard Features

- Designed to be placed above the trunnion of a load block, this integrated low-profile load cell eliminates headroom loss
- Off-axis compensation

Specifications

Accuracy (Static Load):

0.5 - 1% system accuracy of rated capacity

Material:

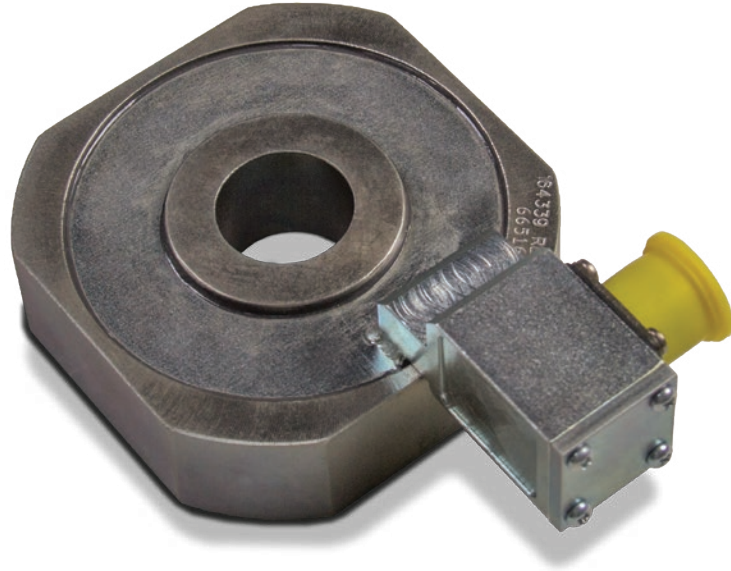
4340 alloy steel, zinc plated

IP Rating:

IP67

Resistance:

700 ohms



Part Number/Price

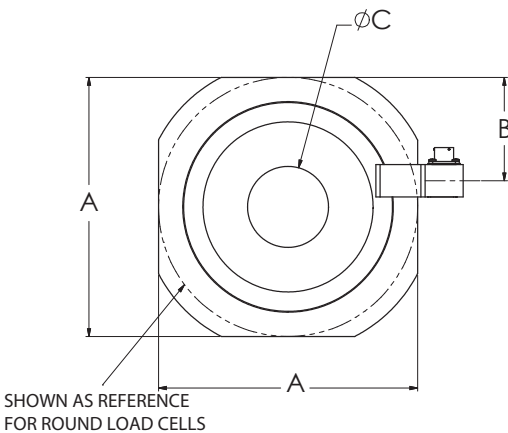
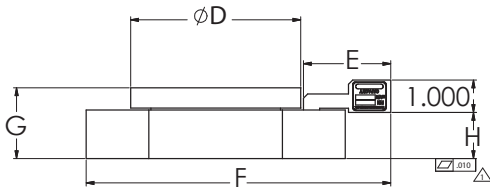
| Part # | Description | Est. Weight | Price |
|--------|--------------------------------|-------------|------------|
| 160651 | 10,000 lb/5,000 kg capacity | 5 lb | \$2,010.00 |
| 163595 | 20,000 lb/10,000 kg capacity | 10 lb | \$2,120.00 |
| 163596 | 40,000 lb/20,000 kg capacity | 20 lb | \$2,270.00 |
| 163829 | 60,000 lb/30,000 kg capacity | 30 lb | \$2,380.00 |
| 163597 | 80,000 lb/40,000 kg capacity | 34 lb | \$2,490.00 |
| 163598 | 100,000 lb/50,000 kg capacity | 38 lb | \$2,660.00 |
| 159550 | 120,000 lb/60,000 kg capacity | 60 lb | Consult |
| 163599 | 160,000 lb/80,000 kg capacity | 105 lb | Consult |
| 163600 | 200,000 lb/100,000 kg capacity | 215 lb | Consult |

Options/Accessories

| Part # | Description | Price |
|--------|--|----------|
| 165978 | Load cell interface cable to TranSend™, 6.5 ft | \$300.00 |
| 165979 | Load cell interface cable to TranSend, 10 ft | \$320.00 |
| 165980 | Load cell interface cable to TranSend, 16 ft | \$340.00 |
| 165989 | Load cell interface cable to TranSend, 20 ft | \$370.00 |
| 165990 | Load cell interface cable to TranSend, 25 ft | \$400.00 |
| 165991 | Load cell interface cable to TranSend, 32 ft | \$460.00 |
| 134498 | Load cell interface cable to CellScale™, 5 ft | \$350.00 |
| 134495 | Load cell interface cable to CellScale, 10 ft | \$380.00 |
| 134500 | Load cell interface cable to CellScale, 15 ft | \$400.00 |
| 134499 | Load cell interface cable to CellScale, 20 ft | \$430.00 |
| 134501 | Load cell interface cable to CellScale, 25 ft | \$460.00 |

Dimensions

| Part # | Capacity | A | B | C (+0.005-0.000) | D | E | F | G | H | Required Hook Shank Diameter (+0.000,-0.005) |
|--------|------------|--------|-------|---------------------|--------|-------|--------|-------|-------|--|
| 160651 | 10,000 lb | 3.500 | 1.350 | 1.005 | 2.450 | 1.880 | 4.905 | 1.500 | 1.000 | 1.000 |
| 163595 | 20,000 lb | 6.000 | 2.500 | 1.505 | 3.500 | 2.443 | 7.405 | 1.750 | 1.250 | 1.500 |
| 163596 | 40,000 lb | 7.500 | 3.150 | 2.005 | 5.000 | 2.580 | 8.905 | 2.000 | 1.375 | 2.000 |
| 163829 | 60,000 lb | 8.000 | 3.190 | 2.505 | 5.250 | 2.695 | 9.405 | 2.188 | 1.500 | 2.500 |
| 163597 | 80,000 lb | 8.500 | 3.650 | 3.505 | 5.750 | 2.680 | 9.905 | 2.313 | 1.500 | 3.500 |
| 163598 | 100,000 lb | 9.125 | 3.873 | 4.005 | 7.000 | 2.382 | 10.530 | 2.668 | 1.875 | 4.000 |
| 159550 | 120,000 lb | 9.125 | 3.873 | 4.005 | 7.000 | 2.382 | 10.530 | 2.813 | 2.000 | 4.000 |
| 163599 | 160,000 lb | 16.000 | 7.030 | 6.005 | 14.500 | 2.955 | 17.405 | 4.625 | 2.500 | 6.000 |
| 163600 | 200,000 lb | 16.000 | 7.030 | 6.005 | 14.500 | 2.955 | 17.405 | 5.125 | 3.000 | 6.000 |



MSI Tension Link Load Cell



Specifications

Input Resistance:

1,500 ohm

Output Resistance:

2,000 ohm

Full Scale Output:

0.8 mV/V

Connector Pin Out:

A: EX+

B: Sig +

C: Sig -

D: EX-

Accuracy:

0.1% sensor accuracy

Material:

4340 steel

Standard Features

- 4340 steel construction
- Mil spec connector
- 7:1 safety factor

Options

(Contact MSI for application consultation)

- Crosby® top and bottom shackles

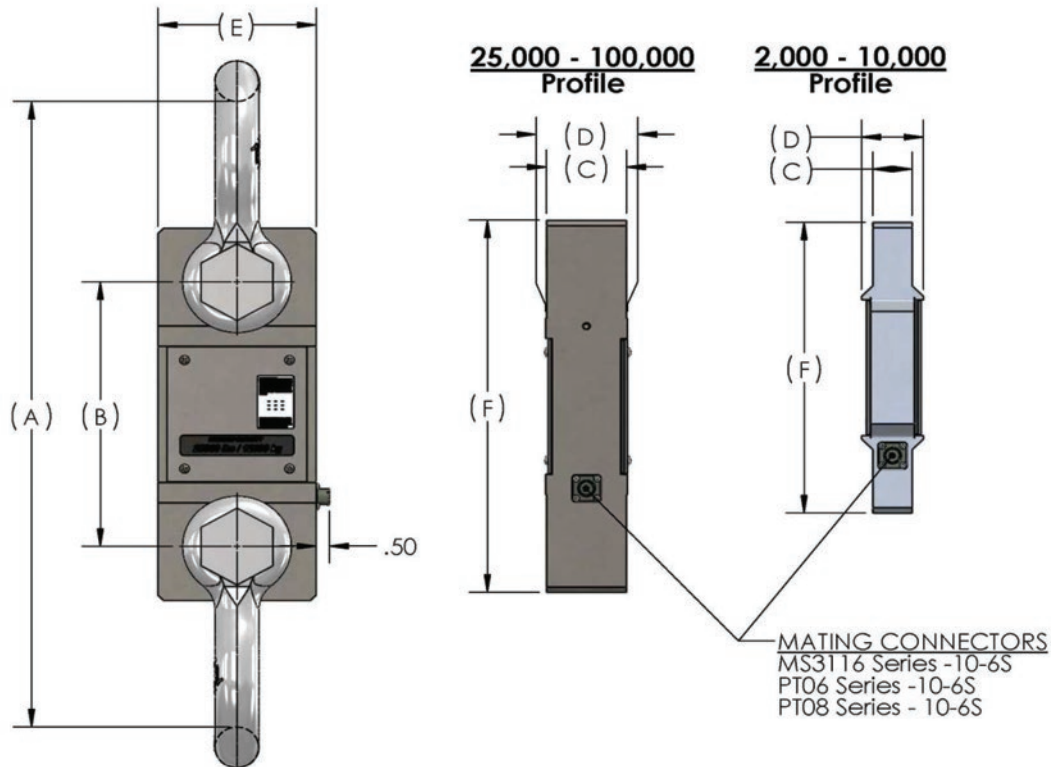
Part Number/Price

| Part # | Description | Price |
|--------|--------------------------------|----------|
| 181907 | 2K 7200 Style Load Cell Only | Consult |
| 181908 | 5K 7200 Style Load Cell Only | Consult |
| 181909 | 10K 7200 Style Load Cell Only | Consult |
| 178093 | 25K 7200 Style Load Cell Only | Consult |
| 178094 | 50K 7200 Style Load Cell Only | Consult |
| 181910 | 100K 7200 Style Load Cell Only | Consult |
| 134505 | Mating Cable Assembly, 10 ft | \$165.00 |

Contact factory for higher capacities

Dimensions

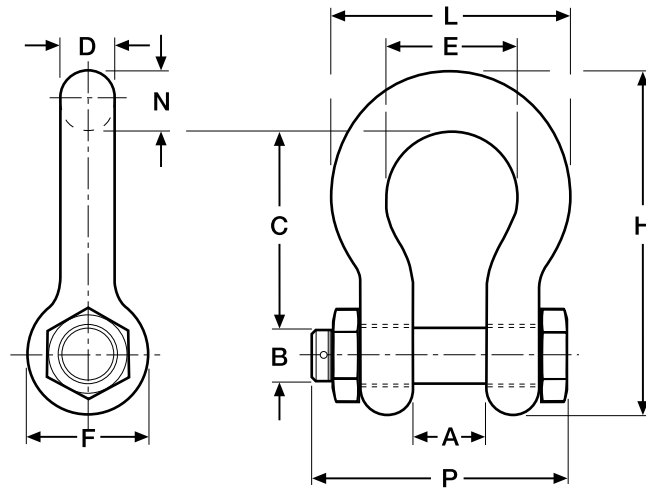
| Capacity (lbs) | P/N | Load Cell Material | (A) Headroom Loss | (B) C-C Length | (C) Lug Thk | (D) Body Thk | (E) Body Width | (F) Body Length | Lug Hole | Crosby Shackle |
|----------------|--------|--------------------|-------------------|----------------|-------------|--------------|----------------|-----------------|----------|----------------|
| 2,000 | 181907 | Aluminum | 13.50 in | 8.00 in | 0.99 in | 2.13 in | 4.50 in | 9.75 in | 0.78 in | 3-1/4 T 151357 |
| 5,000 | 181908 | Aluminum | 13.50 in | 8.00 in | 0.99 in | 2.13 in | 4.50 in | 9.75 in | 0.78 in | 3-1/7 T 151357 |
| 10,000 | 181909 | Aluminum | 16.13 in | 8.50 in | 1.35 in | 2.13 in | 5.37 in | 10.75 in | 1.05 in | 6-1/2 T 151355 |
| 25,000 | 178093 | Steel | 22.39 in | 9.26 in | 2.24 in | 2.24 in | 4.80 in | 12.76 in | 1.67 in | 17 T 141992 |
| 50,000 | 178094 | Steel | 25.74 in | 9.76 in | 2.74 in | 2.81 in | 5.43 in | 13.76 in | 2.05 in | 25 T 151356 |
| 100,000 | 181910 | Steel | 28.49 in | 10.74 in | 3.09 in | 3.09 in | 6.86 in | 15.74 in | 2.30 in | 55 T 146336 |

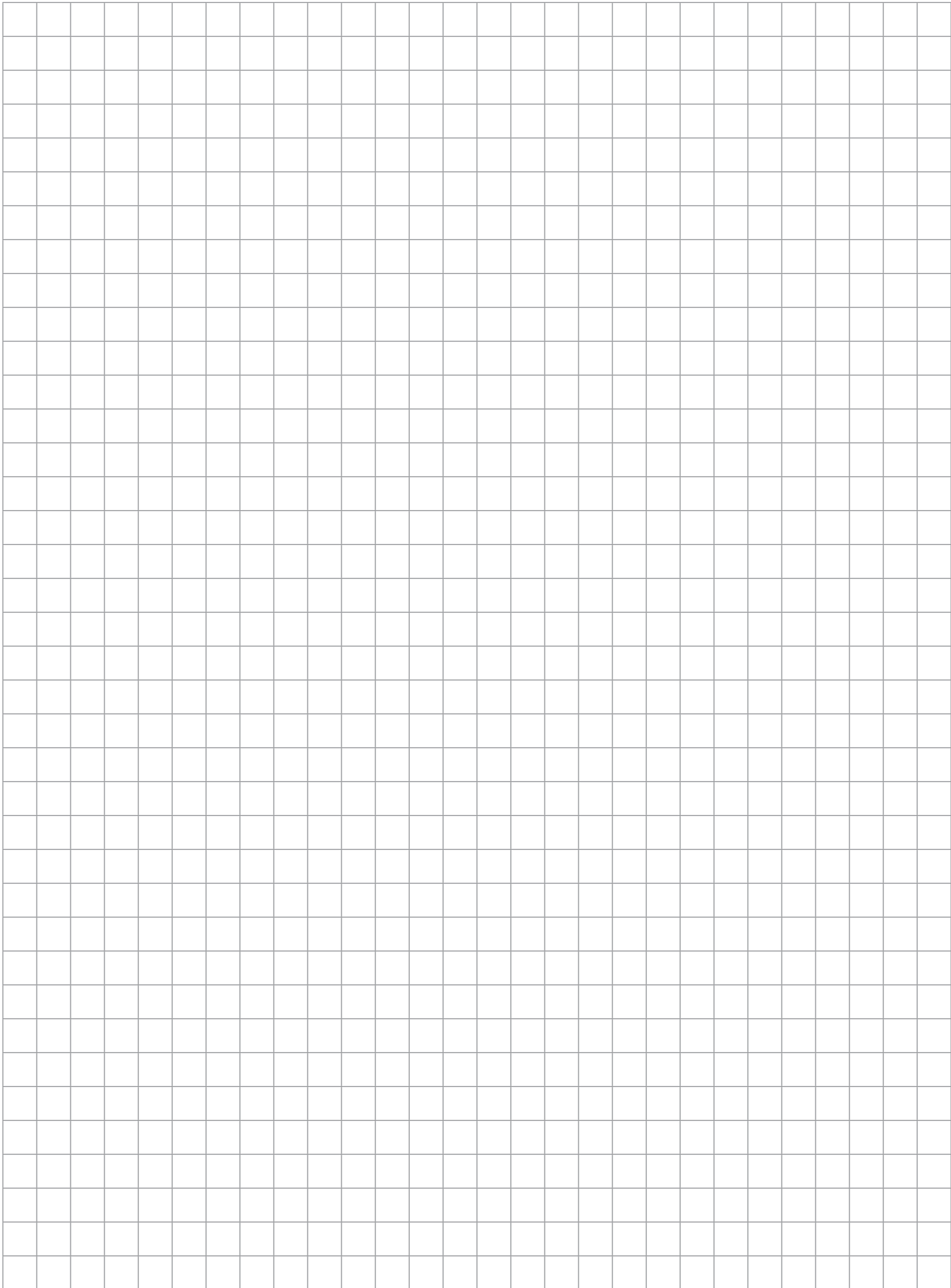


Shackle Dimensions

Part Number/Price

| Part # | MSI Part # | W.I.L. Tons | Size | A | B | C | D | E | F | H | L | N | P | Weight | Price |
|---------------------------|-------------|--|---------|---------|---------|----------|---------|----------|----------|----------|----------|---------|----------|-----------|---------|
| 151357 | 10541 | 3 1/4 | 0.63 in | 1.06 in | .75 in | 2.38 in | 0.63 in | 1.69 in | 1.56 in | 4.22 in | 2.94 in | 0.69 in | N/A | 1.58 lb | Consult |
| 151355 | 10538 | 6 1/2 | 0.88 in | 1.44 in | 1.00 in | 3.31 in | 0.88 in | 2.28 in | 2.13 in | 5.75 in | 4.03 in | 0.97 in | 5.00 in | 3.95 lb | Consult |
| 141992 | 10539 | 17 | 1.50 in | 2.38 in | 1.63 in | 5.75 in | 1.50 in | 3.88 in | 3.63 in | 9.88 in | 6.88 in | 1.62 in | 8.25 in | 19.50 lb | Consult |
| 151356 | 10540 | 25 | 1.75 in | 2.88 in | 2.00 in | 7.00 in | 1.75 in | 5.00 in | 4.32 in | 11.88 in | 8.50 in | 2.12 in | 9.59 in | 31.30 lb | Consult |
| 146334 | 23650-0030 | 30 | 1.50 in | 2.38 in | 1.63 in | 5.75 in | 1.50 in | 3.88 in | 3.63 in | 9.88 in | 6.88 in | 1.62 in | 8.25 in | 20.80 lb | Consult |
| 146335 | 23650-0040 | 40 | 1.75 in | 2.88 in | 2.00 in | 7.00 in | 1.75 in | 5.00 in | 4.32 in | 11.88 in | 8.50 in | 2.12 in | 9.59 in | 33.91 lb | Consult |
| 146336 | 23650-0050 | 55 | 2.00 in | 3.25 in | 2.25 in | 7.75 in | 2.00 in | 5.75 in | 5.00 in | 13.38 in | 9.75 in | 2.00 in | 11.00 in | 51.75 lb | Consult |
| 151359 | N/A | 85 | 2.5 in | 4.12 in | 2.75 in | 10.50 in | 2.72 in | 7.25 in | 5.69 in | 17.84 in | 12.87 in | 3.12 in | 13.58 in | 96.00 lb | Consult |
| 151360 | 23650-0110 | 120 | 3.00 in | 5.00 in | 3.25 in | 13.00 in | 3.00 in | 7.88 in | 6.50 in | 21.50 in | 14.50 in | 3.63 in | 16.50 in | 178.00 lb | Consult |
| 83455 | N/A | 120 | 3 in | 5.00 in | 3.25 in | 13.00 in | 3.11 in | 7.88 in | 6.50 in | 21.50 in | 14.36 in | 3.63 in | 15.13 in | 178.00 lb | Consult |
| 151361 | 23650-0175 | 175 | 4.00 in | 5.50 in | 4.25 in | 14.50 in | 4.00 in | 10.00 in | 9.00 in | 25.69 in | 18.38 in | 4.56 in | 19.75 in | 338.00 lb | Consult |
| 151358 | N/A | 250 | 4 in | 8.50 in | 5.00 in | 20.00 in | 4.50 in | 13.00 in | 12.00 in | 35.00 in | 24.50 in | 6.50 in | 22.68 in | 600.00 lb | Consult |
| Oversized Shackles | | | | | | | | | | | | | | | |
| 148497 | 501386-0100 | 40 | 1.75 in | 2.88 in | 2.00 in | 10.00 in | 2.25 in | 6.00 in | 4.32 in | 15.35 in | 10.50 in | 2.25 in | 9.00 in | 45.00 lb | Consult |
| 148393 | 501082-0100 | 40 | 2.25 in | 2.88 in | 2.00 in | 12.50 in | 2.25 in | 8.00 in | 4.32 in | 17.85 in | 12.50 in | 2.25 in | 10.00 in | 90.00 lb | Consult |
| 148394 | 501083-0100 | 50 | 2.00 in | 3.25 in | 2.25 in | 12.25 in | 2.50 in | 8.00 in | 5.00 in | 18.50 in | 13.00 in | 2.50 in | 11.00 in | 72.00 lb | Consult |
| Shims | | | | | | | | | | | | | | | |
| 146534 | 30013-0112 | (For use with 50,000 ton/70,000 ton systems) | | | | | | | | | | | | | Consult |





[illegible]